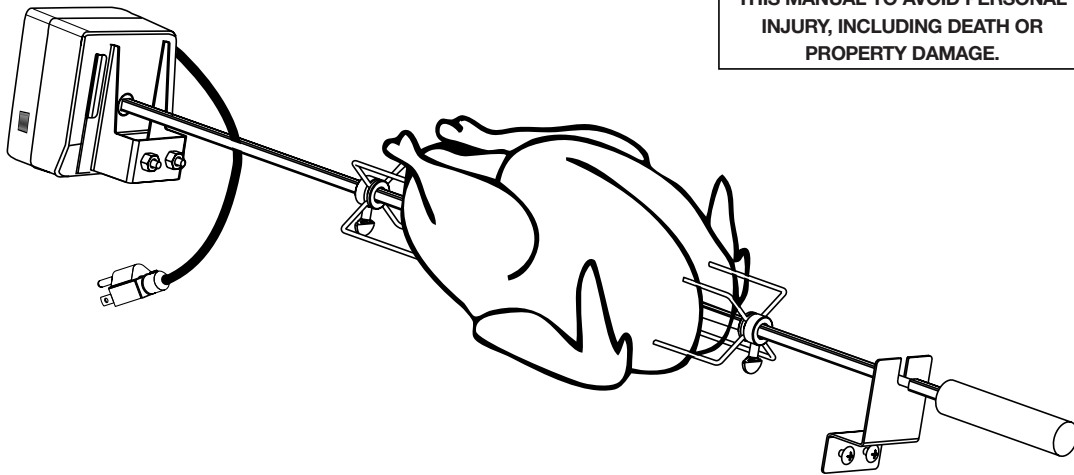


**BRINKMANN®**

**ROTISSERIE**  
for  
BRINKMANN®  
*Backyard Kitchen™*  
**OWNER'S MANUAL**

**ASSEMBLY AND OPERATING INSTRUCTIONS**

**SAVE THIS MANUAL FOR FUTURE REFERENCE**




**⚠WARNING**

READ AND FOLLOW ALL  
WARNINGS AND INSTRUCTIONS IN  
THIS MANUAL TO AVOID PERSONAL  
INJURY, INCLUDING DEATH OR  
PROPERTY DAMAGE.



## **IMPORTANT SAFETY WARNINGS**


**WE WANT YOU TO ASSEMBLE AND USE YOUR ROTISSERIE AS SAFELY AS POSSIBLE. THE PURPOSE OF THIS SAFETY ALERT SYMBOL  IS TO ATTRACT YOUR ATTENTION TO POSSIBLE HAZARDS AS YOU ASSEMBLE AND USE YOUR ROTISSERIE.**

**WHEN YOU SEE THE SAFETY ALERT SYMBOL  PAY CLOSE ATTENTION TO THE INFORMATION WHICH FOLLOWS!**

** READ ALL SAFETY WARNINGS AND INSTRUCTIONS CAREFULLY BEFORE ASSEMBLING AND OPERATING YOUR ROTISSERIE.**

### **WARNING**

- Always check the grill prior to each use as indicated in the “Pre-Start Check List” section of the Back Yard Kitchen Owner’s Manual.
- Keep children and pets away from hot grill. **DO NOT** allow children to use or play near this grill.
- **DO NOT** leave the grill unattended while in use.
- Keep any electrical supply cords away from water or heated surfaces.
- **DO NOT** operate with a damaged cord or plug.
- Turn motor switch to “OFF” before removing plug from outlet.
- Unplug the rotisserie motor when not in use and before cleaning.
- Keep a fire extinguisher on hand acceptable for use with gas products. Refer to your local authority to determine proper size and type.
- Do not use the side burner when using a rotisserie.
- For household use only. **DO NOT** use this grill for anything other than its intended purpose.
- **DO NOT** use while under the influence of drugs or alcohol.
- To avoid body injury, **DO NOT** touch spit rod while in use or soon after use, rod can be **EXTREMELY HOT**.
- Grill is hot when in use. To avoid burns:
  - **DO NOT** attempt to move the grill.
  - Lock the wheels so the unit does not accidentally move.
  - Wear protective gloves or oven mitts.
  - **DO NOT** touch any hot grill surfaces.
  - **DO NOT** wear loose clothing or allow hair to come in contact with grill.
  - Allow parts to cool before disassembling.

** USE CAUTION AND COMMON SENSE WHEN OPERATING YOUR GAS GRILL. FAILURE TO ADHERE TO THE SAFETY WARNINGS AND GUIDELINES IN THIS MANUAL COULD RESULT IN SEVERE BODILY INJURY OR PROPERTY DAMAGE.**

**SAVE THIS MANUAL FOR FUTURE REFERENCE.**

# ASSEMBLY INSTRUCTIONS

**▲ READ ALL SAFETY WARNINGS & ASSEMBLY INSTRUCTIONS CAREFULLY BEFORE ASSEMBLING OR OPERATING YOUR ROTISSERIE.**

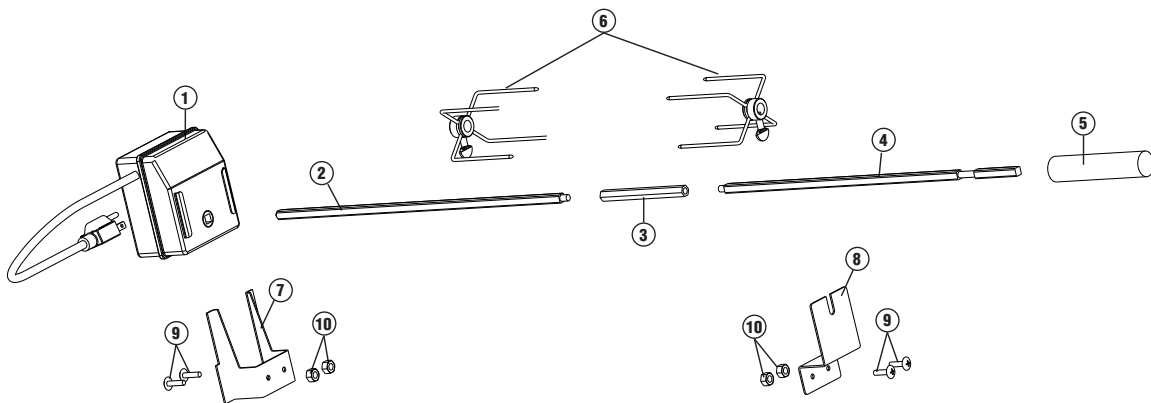
**WE RECOMMEND YOU READ THE INSTRUCTION MANUAL BEFORE ASSEMBLING THIS ACCESSORY.**

The following tools are required to assemble this Brinkmann Backyard Kitchen Rotisserie:

- Phillips & Flathead Screwdrivers
- Adjustable Wrench

## PARTS LIST:

①	1	Motor	⑥	2	Forks
②	1	Left Hand Spit Rod	⑦	1	Motor Mount Bracket
③	1	Spit Rod Coupling	⑧	1	Spit Rod Support Bracket
④	1	Right Hand Spit Rod	⑨	4	Screws
⑤	1	Wooden Handle	⑩	4	Nuts



**FOR MISSING PARTS, PLEASE CALL CUSTOMER SERVICE AT 1-800-527-0717.**

(Proof of purchase will be required.)

Inspect contents of the box to ensure all parts are included and undamaged.

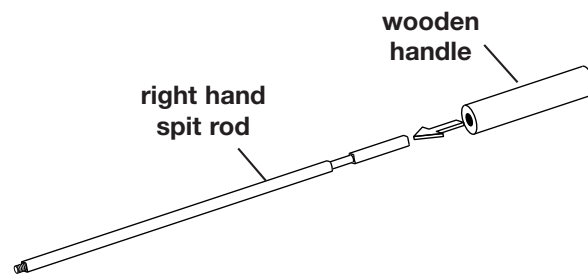
## ASSEMBLY STEPS

### Step 1

Open grill hood and remove main cooking grid and swing grid. Refer to you Backyard Kitchen owners manual.

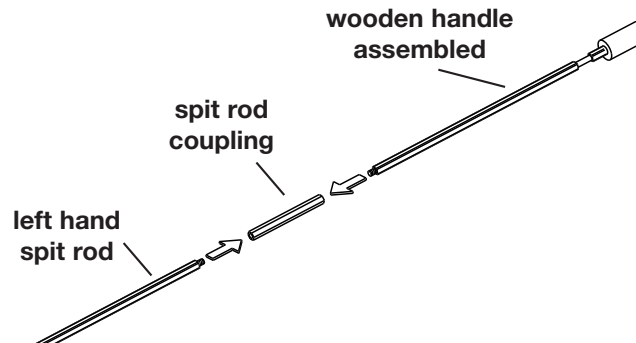
### Step 2

Press the wooden handle onto the end of the right hand spit rod without the threaded section.



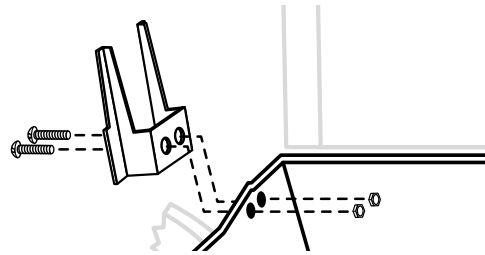
### Step 3

Using the spit rod coupling, connect the left and right hand ends of the spit rod. Tighten securely.



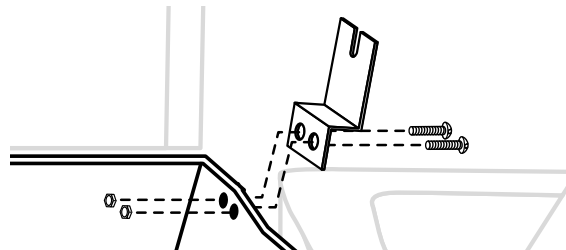
### Step 4

Assemble the motor mount bracket on the left hand side of the grill using 2 screws and 2 nuts.



### Step 5

Assemble the spit rod support bracket to the right hand side of the grill using 2 screws and 2 nuts.



## **⚠ WARNING**

### **ELECTRICAL GROUNDING INSTRUCTIONS:**

This appliance is equipped with a three-prong, grounded plug for your protection against electrical shock hazard. It should be plugged directly into a properly grounded three-prong receptacle. Do not cut or remove the third grounding prong from this plug.

### **OPERATING THE ROTISSERIE:**

- Your grill was pre-drilled from the factory to include mounting holes for the Brinkmann Backyard Kitchen Rotisserie.
- Do not use the side burner when using the rotisserie.
- When using an AC current rotisserie, it must be electrically grounded in accordance with local codes, or in the absence of local codes:
  - In the US: The National Electrical Code – ANSI-NFPA No. 70 – Latest Edition
  - In Canada: the Canadian Electrical Code – CSA C22.1
- Only use the Brinkmann Backyard Kitchen Rotisserie manufactured specifically for use with this grill.
- All electrical supply cords should be kept away from water and any hot surfaces of the grill.

### **ROTISSERIE COOKING:**

1. Install the rotisserie motor onto the motor mount bracket.
2. Ensure that the rotisserie motor is turned to “OFF.”
3. Place one fork onto the spit rod with the prongs facing away from the wooden handle. Do not tighten set screw at this time.
4. Skewer meat with the spit rod and slide to the center of the rod.
5. Place second fork onto the spit rod with the prongs facing the meat.
6. Slide both forks tightly against the meat and securely tighten the fork set screws.
7. Check the balance of the food on the rod by rotating the loaded spit rod loosely in your hands. The rod should rotate evenly with little effort. Adjust the food on the spit to achieve a balanced assembly.

**⚠ Note:** Erratic noises from the motor are a sign of an unbalanced spit rod. Which could cause severe damage to motor gears.

## ROTISSERIE COOKING CONTINUED:

8. Place the loaded spit rod into the motor assembly and support bracket.

9. Close the grill lid and turn the rotisserie motor "ON."

**⚠ WARNING:** Always use oven mitts/gloves to protect your hands. Metal parts become hot during use. Use extreme caution when handling spit rod and forks.

10. Always turn the rotisserie motor to "OFF" when opening the grill lid.

11. When food is done, use oven mitts/gloves to remove spit rod from motor assembly.

12. Loosen fork set screws and remove meat by sliding off the end of the spit rod.

## GRILLING TO PROPER TEMPERATURE:

- Use a meat thermometer to be sure food has reached a safe internal temperature. You may order a Commercial-quality thermometer from Brinkmann. For more information on this product and other Brinkmann accessories, please refer to the accessory pages at the end of this manual.
- The US Department of Agriculture recommends the minimum temperature be reached for the following food items:

Pork ----- 160° F

Poultry ----- 180° F

Roasts ----- 145° F

## HELPFUL HINTS

- If you pre-cook meat or poultry, do so immediately before grilling.
- Never defrost meat at room temperature or on a countertop.
- Refrigerate leftovers within 2 hours of taking food off the grill.

For additional information, please phone the USDA's toll free Meat & Poultry Hotline at:

**1-800-535-4555**

## CLEANING AND MAINTENANCE:

- Spit rod and forks can be disassembled and washed in dish soap and warm water.

**⚠ Note:** All metal parts, with exception of the motor, are dishwasher safe.

- Store motor and other parts in a cool, clean and dry place.
- To prevent electrical shock hazard, **DO NOT** immerse the motor or cord in water when plug into an outlet.

©2001 The Brinkmann Corporation  
Dallas, Texas 75244 U.S.A

www.brinkmanncorp.com

## ONE-YEAR LIMITED WARRANTY

For one-year from date of purchase, The Brinkmann Corporation warrants the Brinkmann Backyard Kitchen™ Rotisserie against defects due to workmanship or materials to the original purchaser. The Brinkmann Corporation's obligations under this warranty are limited to the following guidelines:

- This warranty does not cover rotisserie that have been altered or damaged due to: normal wear, rust, abuse, improper maintenance, improper use, disassembly of parts and/or attempted repair by anyone other than an authorized employee of The Brinkmann Corporation.
- This warranty does not cover surface scratches, rust or heat damage to the finish, which is considered normal wear.
- The Brinkmann Corporation may elect to repair or replace damaged units covered by the terms of this warranty.
- This warranty extends to the original purchaser only and is not transferable or assignable to subsequent purchasers.

The Brinkmann Corporation requires reasonable proof of purchase. Therefore, we strongly recommend that you retain your sales receipt or invoice. To obtain replacement parts for your Brinkmann Backyard Kitchen™ Rotisserie under the terms of this warranty, please call Customer Service Department at 1-800-527-0717. A receipt will be required. The Brinkmann Corporation will not be responsible for any rotisserie forwarded to us without prior authorization.

EXCEPT AS ABOVE STATED, THE BRINKMANN CORPORATION MAKES NO OTHER EXPRESS WARRANTY.

THE IMPLIED WARRANTIES OF MERCHANTABILITY AND FITNESS FOR A PARTICULAR PURPOSE ARE LIMITED IN DURATION TO ONE YEAR FROM THE DATE OF PURCHASE. SOME STATES DO NOT ALLOW LIMITATIONS ON HOW LONG AN IMPLIED WARRANTY LASTS, SO THE ABOVE LIMITATION MAY NOT APPLY TO YOU.

ANY LIABILITY FOR INDIRECT, INCIDENTAL OR CONSEQUENTIAL DAMAGES ARISING FROM THE FAILURE OF THE BRINKMANN BACKYARD KITCHEN™ ROTISSERIE TO COMPLY WITH THIS WARRANTY OR ANY IMPLIED WARRANTY IS EXCLUDED. CUSTOMER ACKNOWLEDGES THAT THE PURCHASE PRICE CHARGED IS BASED UPON THE LIMITATIONS CONTAINED IN THE WARRANTY SET OUT ABOVE. SOME STATES DO NOT ALLOW THE EXCLUSION OR LIMITATION OF INCIDENTAL OR CONSEQUENTIAL DAMAGES, SO THE ABOVE LIMITATION OR EXCLUSION MAY NOT APPLY TO YOU. THIS WARRANTY GIVES YOU SPECIFIC LEGAL RIGHTS, AND YOU MAY ALSO HAVE OTHER RIGHTS WHICH VARY FROM STATE TO STATE.

## Free Manuals Download Website

<http://myh66.com>

<http://usermanuals.us>

<http://www.somanuals.com>

<http://www.4manuals.cc>

<http://www.manual-lib.com>

<http://www.404manual.com>

<http://www.luxmanual.com>

<http://aubethermostatmanual.com>

Golf course search by state

<http://golfingnear.com>

Email search by domain

<http://emailbydomain.com>

Auto manuals search

<http://auto.somanuals.com>

TV manuals search

<http://tv.somanuals.com>