



Warming Trays

Extra-large 41 1/4" x 14" warming surface!

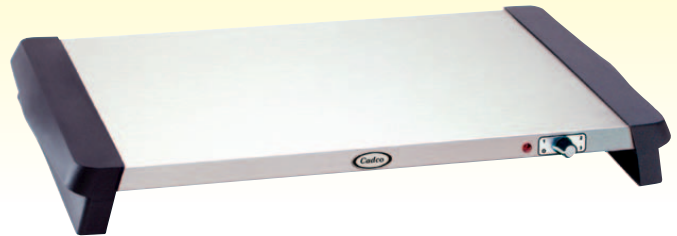


Model WT-40S: Large Countertop Warming Tray

- Two variable heat controls and safety signal lights
- Extra-large 41 1/4" x 14" stainless steel warming surface (Fits six third size, four half size, or two full size steam table pans (not included))
- 120 volts/600 watts/5 amps

Model WT-10S: Countertop Warming Tray

- Large 20 1/2" x 14" stainless steel warming surface (Fits three third size, two half size, or one full size steam table pan(s) (not included))
- 120 volts/300 watts/2.5 amps

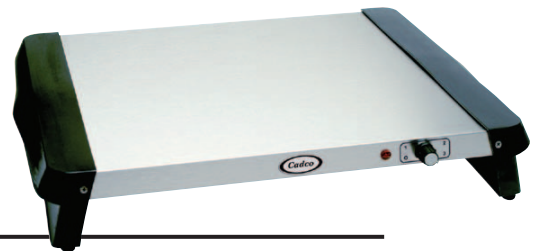


Model WT-100: Countertop Warming Tray

- Large 20 1/2" x 14" black porcelain on steel warming surface (Fits three third size, two half size, or one full size steam table pan(s) (not included))
- 120 volts/300 watts/2.5 amps

Model WT-5S: Countertop Warming Tray

- 13 1/4" x 14" stainless steel warming surface (Fits two third size or one half size steam table pan(s) (not included))
- 120 volts/300 watts/2.5 amps



Warming Trays - Common Features

- Variable heat control - 155° to 205° F
- Easy-to-clean warming surface
- Safety signal light(s)
- 4 non-skid feet
- UL Safety & Sanitary, C-UL
- One year warranty

Accessories also available to maximize the utility of your Warming Tray; see back page!

Model	Color	Electrical			Unit Dimensions	Ship Wt. /lbs.	Carton Dimensions	UPC#
		Volts	Watts	Amps				
WT-40S	Stainless	120	600	5.0	w:46", h:27/8", l:15 1/4"	*17.5	*w:48", h:4 1/4", l:17 1/2"	654796-96400-0
WT-10S	Stainless	120	300	2.5	w:26", h:27/8", l:15 1/4"	8.6	w:27 5/8", h:4", l:17 5/8"	654796-96130-6
WT-100	Black	120	300	2.5	w:26", h:27/8", l:15 1/4"	8.6	w:27 5/8", h:4", l:17 5/8"	654796-96120-7
WT-5S	Stainless	120	300	2.5	w:18", h:3", l:15 1/4"	7.2	w:19 5/8", h:4", l:17 5/8"	654796-96150-4

Patent Pending

*Requires an overwrap carton when drop shipping; add 4 lbs.

For more information, please contact Cadco, Ltd, 145 Colebrook River Road, Winsted, CT 06098
Tel. (860)738-2500 ● Fax (860) 738-9772 ● E-mail: info@cadco-ltd.com ● Web site: www.cadco-ltd.com

Due to continual product improvement, all product specifications, designs and prices are subject to change without notice.

7/20/2007 RV05



Accessories for Cadco Buffet Servers & Warming Trays

Build or Add To Your Own Buffet Server!

with these Accessories for Cadco Buffet Servers & Warming Trays

These accessories will fit on all Cadco Buffet Servers and all models of Cadco Warming Trays (except slanted shelf Multi-Level Warmers (CMLW-2S & CMLW-2SG) and older WT-100 Warming Trays with control knob on the top of the warming surface. PS-TBS and ITBS Full accessory packs do not fit on WT-5S.)



NOTE: All clear polycarbonate lids have utensil slots.

PS-TBS: Steam Pan Holder Accessory ● Accessory for Cadco Warming Trays & Buffet Servers ● Stainless steel
● Holds 3 third size, 2 half size, or one full size 2-1/2" deep steam pans (pans not incl.) on WT-10S warming surface for optimum heat retention ● Two #PS-TBS will fit on # WT-40S Large Warming Tray

ITBS-2: Half Size Accessory Pack ● 2 half size stainless steam pans with stainless lids & PS-TBS

ITBS-2P: Half Size Accessory Pack w/Clear Lids (not shown) ● 2 half size stainless steam pans with clear lids & PS-TBS

ITBS-3: Third Size Accessory Pack ● 3 third size stainless steam pans with stainless lids & PS-TBS

ITBS-3P: Third Size Accessory Pack w/Clear Lids ● 3 third size stainless steam pans with clear lids & PS-TBS

CL-2: Half Size Clear Lids Accessory Pack ● Two clear polycarbonate lids for half size steam pans

CL-3: Third Size Clear Lids Accessory Pack ● Three clear polycarbonate lids for third size steam pans

All pans
NSF
& 2-1/2"
deep

SPL-2: Half Size Steam Pan with SS Lid ● One half size (2-1/2" deep) stainless steam pan with stainless lid

SPL-2P: Half Size Steam Pan with Clear Lid ● One half size (2-1/2" deep) stainless steam pan w/ clear polycarbonate lid

SPL-3: Third Size Steam Pan with SS Lid ● One third size stainless steam pan with stainless lid

SPL-3P: Third Size Steam Pan with Clear Lid ● One third size stainless steam pan w/ clear polycarbonate lid

Model	Color	Unit Dimensions	Ship Wt.	Carton Dimensions	UPC#
PS-TBS	Stainless	w:20 ³ / ₄ ", h:2 ¹ / ₂ ", l:14 ¹ / ₄ "	3 lbs.	w:27", h:3 ¹ / ₂ ", l:15"	654796-96100-9
ITBS-2	Stainless	w:20 ³ / ₄ ", h:3 ³ / ₄ ", l:14 ¹ / ₄ "	7.35 lbs.	w:27", h:3 ¹ / ₂ ", l:15"	654796-96202-0
ITBS-2P	SS/Clear	w:20 ³ / ₄ ", h:5", l:14 ¹ / ₄ "	6.85 lbs.	w:27", h:3 ¹ / ₂ ", l:15"	654796-96222-8
ITBS-3	Stainless	w:20 ³ / ₄ ", h:3 ³ / ₄ ", l:14 ¹ / ₄ "	7.85 lbs.	w:27", h:3 ¹ / ₂ ", l:15"	654796-96203-7
ITBS-3P	SS/Clear	w:20 ³ / ₄ ", h:5", l:14 ¹ / ₄ "	7.25 lbs.	w:27", h:3 ¹ / ₂ ", l:15"	654796-96204-4
CL-2	Clear	ea.:w:12 ⁷ / ₈ ", h:2 ¹ / ₂ ", l:10 ¹ / ₂ "	2 = 2 lbs.	w:15", h:5", l:12"	654796-96117-7
CL-3	Clear	ea.:w:12 ⁷ / ₈ ", h:2 ¹ / ₂ ", l:7"	3 = 2.2 lbs.	w:15", h:5", l:10"	654796-96116-0
SPL-2	Stainless	w:12 ³ / ₄ ", h:3 ³ / ₄ ", l:10 ¹ / ₂ "	2.5 lbs.	w:13 ¹ / ₄ ", h:3 ¹ / ₂ ", l:11"	654796-96112-2
SPL-2P	Stainless	w:12 ⁷ / ₈ ", h:5", l:10 ¹ / ₂ "	2 lbs.	w:13 ¹ / ₄ ", h:3 ¹ / ₂ ", l:11"	654796-96122-1
SPL-3	Stainless	w:12 ³ / ₄ ", h:3 ³ / ₄ ", l:7"	2 lbs.	w:13 ¹ / ₄ ", h:3 ¹ / ₂ ", l:7 ¹ / ₂ "	654796-96113-9
SPL-3P	Stainless	w:12 ⁷ / ₈ ", h:5", l:7"	1.8 lbs.	w:13 ¹ / ₄ ", h:3 ¹ / ₂ ", l:7 ¹ / ₂ "	654796-96123-8

For more information, please contact Cadco, Ltd, 145 Colebrook River Road, Winsted, CT 06098
Tel. (860)738-2500 ● Fax (860) 738-9772 ● E-mail: info@cadco-ltd.com ● Web site: www.cadco-ltd.com

Due to continual product improvement, all product specifications, designs and prices are subject to change without notice. 10/6/2006 RV04

Free Manuals Download Website

<http://myh66.com>

<http://usermanuals.us>

<http://www.somanuals.com>

<http://www.4manuals.cc>

<http://www.manual-lib.com>

<http://www.404manual.com>

<http://www.luxmanual.com>

<http://aubethermostatmanual.com>

Golf course search by state

<http://golfingnear.com>

Email search by domain

<http://emailbydomain.com>

Auto manuals search

<http://auto.somanuals.com>

TV manuals search

<http://tv.somanuals.com>