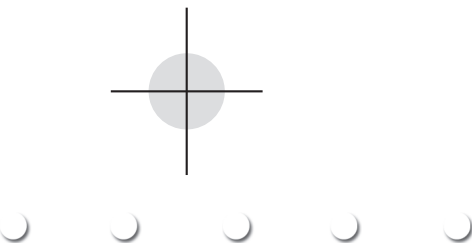


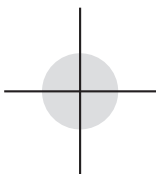
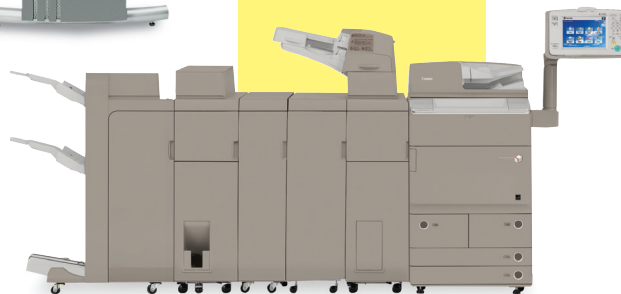
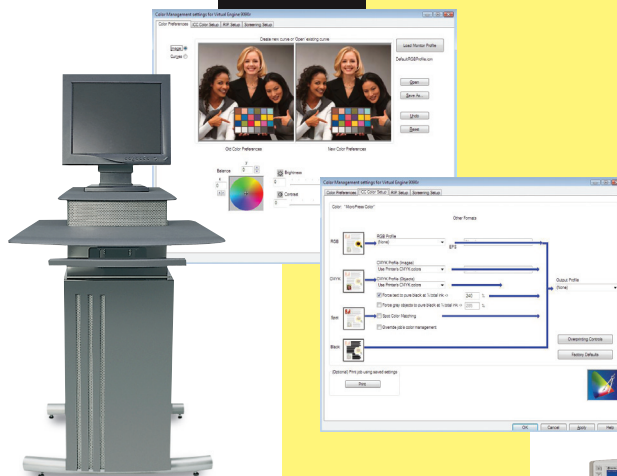


EFI® MicroPress® 8.3

Scalable Production Workflow Solution



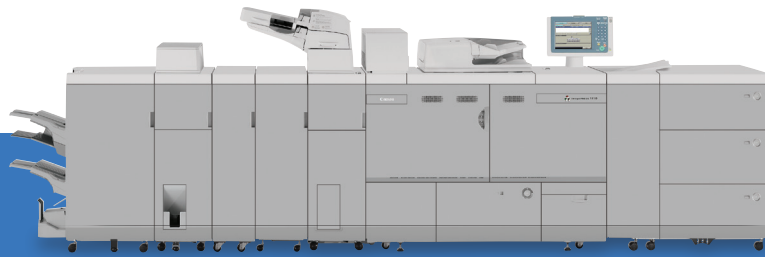
Complete print workflow solution
for production or enterprise printing



EFI MicroPress 8.3

Scalable Production Workflow Solution

A FLEXIBLE SOLUTION TO MEET A VARIETY OF MARKET NEEDS



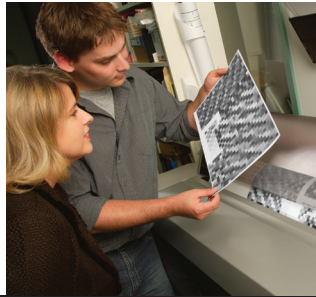
Production and enterprise print environments face a unique set of challenges every day, from assembling complex documents and ensuring consistent, high-quality output to reducing downtime and managing workflows efficiently. In mid- to high-volume production environments, multiple digital printers or presses are often needed to keep pace with the daily demand.

Because of this, EFI and Canon U.S.A., Inc. partnered to offer a comprehensive solution to fit the workflow needs of a variety of print service providers, from corporate in-plant departments to commercial printers. With connectivity to the mid-volume color and monochrome imagePRESS® digital presses and a variety of imageRUNNER® ADVANCE systems, EFI MicroPress Solo, Plus, and Max servers combine the flexibility, scalability, and ease of use of the digital front-end with the productivity, image quality, and versatility of Canon's robust portfolio of digital printing products.

MicroPress servers are best suited for environments, such as those listed below, that need to centrally manage multiple engines to streamline workflow and enable efficiency.

- **Print-on-Demand** environments such as quick printers and digital printers
- **In-plant CRDs** that act as production centers for mid- to large-size corporations
- **Educational Institutions** including primary, secondary, and higher education
- **Commercial Printers** that are growing their digital business

Accommodate your workflow and applications



Canon recognizes the need to bring to market more than just superior hardware technology. That's why we offer **imagePRESS Workflow Solutions**, a suite of hardware and software solutions to help print service providers of any size grow their digital print business. Canon is committed to integrating with industry standards to offer and support the latest in workflow technology, from creative and submission throughout the entire workflow to finishing and distribution.

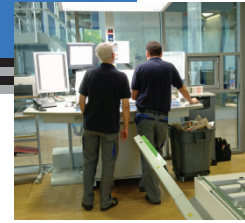
EFI MicroPress is part of this program within the workflow integration category. Workflow integration solutions strive to automate production processes, eliminate redundant processes, and streamline information through the workflow to maximize efficiency and profitability.



Deliver – Canon will *deliver* a complete solution and fill in the missing pieces to existing workflows.

Connect – Many environments have already made large investments in their workflow and they need Canon to *connect* to their existing workflow.

Simplify – The final goal is to deliver a solution that builds efficiency within the workflow and to *simplify* your production processes.

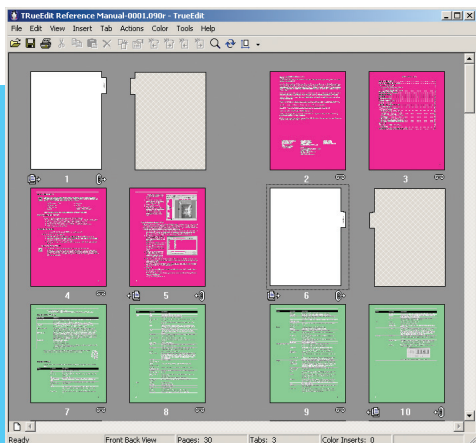


MAKE-READY TOOLS THAT SIMPLIFY COMPLEX DOCUMENT CREATION

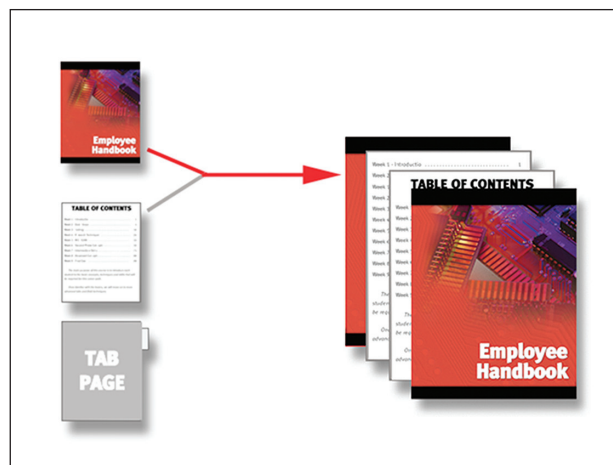
One strength of the MicroPress server is its ability to offer a wide range of make-ready tools to help reduce prepress time and drive productivity. Because users are working in a rasterized workflow, comprehensive file changes and edits don't require re-processing before printing. With its ability to handle a variety of different file formats, the MicroPress server's job merge functionality makes simple work of bringing files from a variety of sources together to create one cohesive job.

Need to add tabs to a course manual, corporate report, or marketing collateral? No problem. The tab functionality available within the MicroPress server is one of the most robust in the industry. Adding new tabs in a document utilizing a WYSIWYG preview helps reduce operator error or wasted materials in the final production run.

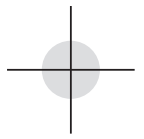
Whether you're printing saddle-stitched booklets, perfect-bound books, or pre-punched documents, the MicroPress server provides the make-ready tools necessary to help you set up these types of jobs easily—all while enabling the capabilities of the engine to print and finish these types of jobs in-line. The imagePRESS digital presses and imageRUNNER digital printers offer a variety of finishing options, ranging from in-line perfect binding to saddle-stitching and booklet bleed trimming.



WYSIWYG



TrueEdit



PRODUCTIVITY FEATURES TO KEEP UP WITH DEMAND

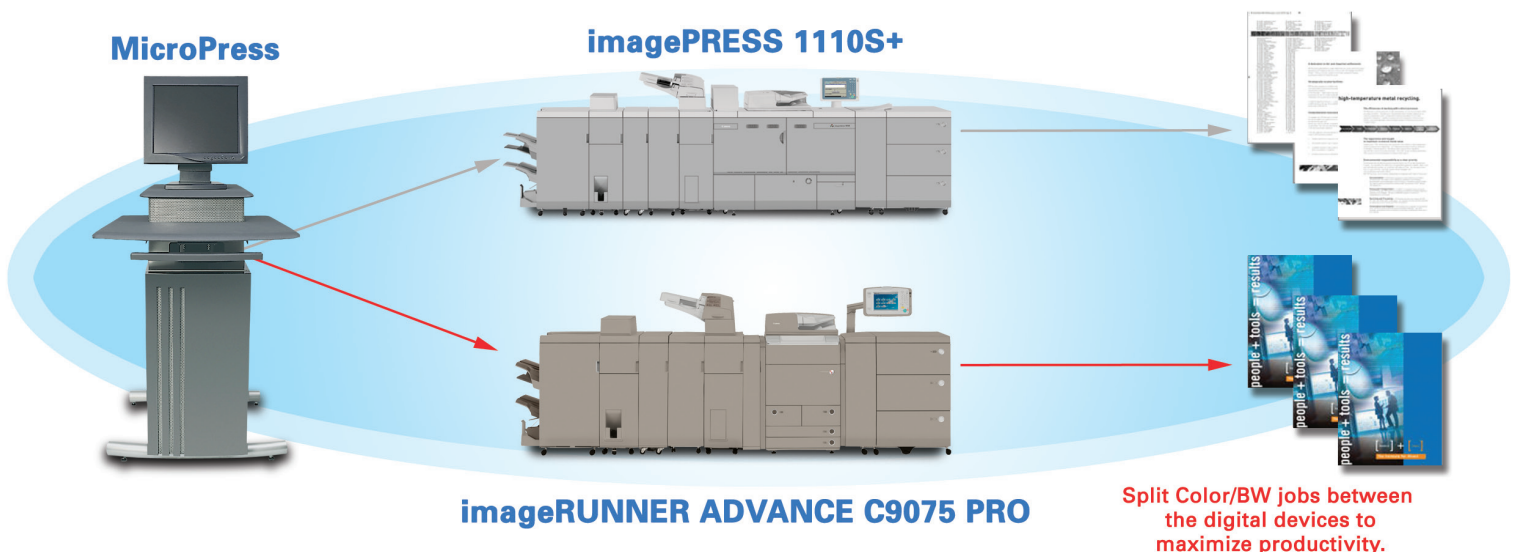
In multiple engine environments, the MicroPress server can be used as a central management system to control job setup and routing. Because of this, MicroPress Solo, Plus, and Max Servers maximize productivity in demanding production environments. In addition, the flexible, scalable design provides a growth path to meet future requirements.

The MicroPress server offers clustering technology. This allows a single Max server to drive up to 12 monochrome devices or five color engines within a single product family. For example, jobs can be managed and split across any combination of multiple imagePRESS 1100+ Series digital presses—all while enabling production at full engine-rated speed. This provides the ability to split a job and run it simultaneously on multiple engines, effectively multiplying your productivity by the number of engines within a cluster.

For documents that contain both color and black-and-white pages, the MicroPress server has the ability to identify whether a page contains color or is monochrome only and sends each page to the appropriate printer. Color and

black-and-white splitting reduces waste associated with printing pages both ways and increases productivity by eliminating the need to manually split and route the job.

For example, if a job with color covers is sent to a multi-engine environment containing the imagePRESS 1110S+ digital press and an imageRUNNER ADVANCE C9075 PRO system, the black-and-white content pages would automatically print on the imagePRESS 1110S+ and the color covers would automatically print on the imageRUNNER ADVANCE C9075 PRO.



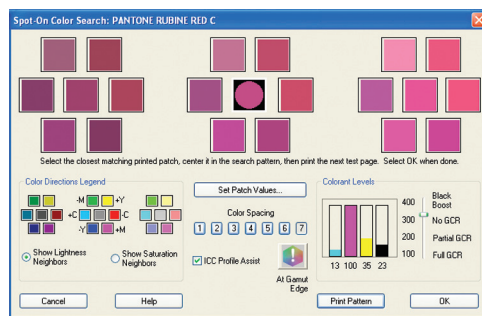


TAKE CONTROL OF YOUR COLOR

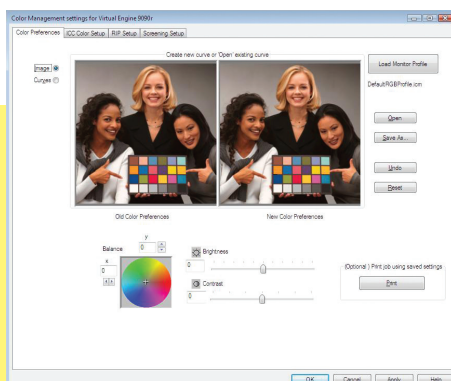
Demanding print environments require accurate color controls. MicroPress offers these controls through its use of global calibration in multi-engine environments, the ability to adjust curves if necessary, and the capabilities of EFI Spot-On™ to help with matching and adjusting spot colors.

Honoring a corporate branding identity is important in any production environment. With the color controls available within a MicroPress server, accurate simulation of named colors is no longer guesswork.

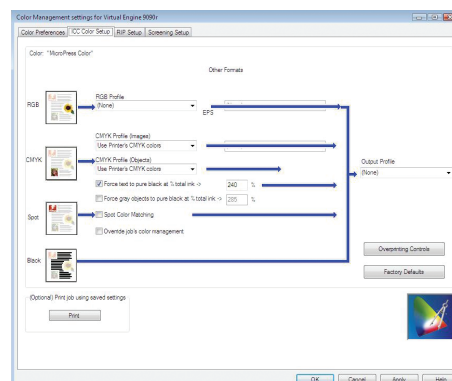
With the ability to produce colors the right way the first time, jobs can get out the door sooner, without sacrificing color control for centralized management of your production environment or corporate workgroup.



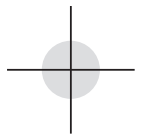
ColorWise Spot-On



Color Editor



Setup with ICC Profiles



HIGH-QUALITY, PRODUCTIVE DIGITAL PRESSES AND PRINTERS CAN BE DRIVEN BY A MICROPRESS SERVER

The Flexibility to choose the right product to match current demand, future growth

The MicroPress 8.3 servers are supported with the following Canon imaging systems:

- Color imageRUNNER C5185/C4580/C4080 Series*
- imageRUNNER PRO 7110VP/7125VP/7138VP/7150VP Series
- imagePRESS C7000VP/C6000VP/C6000 digital presses**
- imagePRESS C7010VP/C6010VP/C6010 digital presses***
- imagePRESS 1135+/1125+/1110+/1110S+ digital presses[▲]
- imageRUNNER ADVANCE C9075 PRO/C9065 PRO systems^{▲▲}
- imageRUNNER ADVANCE C7065/C7055 systems^{▲▲}
- imageRUNNER ADVANCE 8105/8095/8085 systems[†]

MicroPress Workflow

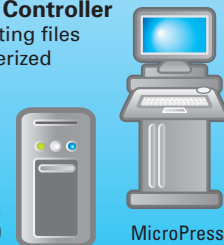


Content Creation

- Job assembly tools for creation of documents with tabs, chapters, and color substitutions.

Prepress/Print Controller

- Save time by editing files after they're rasterized with TrueEdit.



imagePRESS Server J100/J200

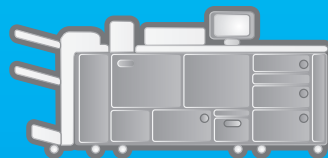
MicroPress



Job Management

- Manage and distribute all print jobs through one interface with Print Station Manager.
- Support up to 12 monochrome engines or 5 color engines.

Print Engine



imagePRESS 1135+/1125+/1110+/1110S+

* Connectivity requires the imagePASS-H1 controller.

** Connectivity requires the imagePRESS Server A3100, A2100, or A1100.

*** Connectivity requires a PrintLink Kit.

[▲] Connectivity requires the imagePRESS Server J100 or J200.

^{▲▲} Connectivity requires the imagePASS-A1 controller or ColorPASS-GX300.

[†] Connectivity requires the imagePASS-U1 controller.

Features and Specifications

MicroPress 8.3 Server Features

Product Model	MicroPress Solo	MicroPress Plus	MicroPress Max
Manual or Scheduled Archive/Unarchive	●	●	●
B/W or Color Click Control	●	●	●
Bates Stamping and TIFF Workflow (Legal)	●	●	●
Color and B/W Split	NA	●	●
Color Calibration, Spot Color Management, and ICC Management	●	●	●
Customized Script Creation	OPT	OPT	●
Customizable Paper Catalog	●	●	●
Form Overlay	●	●	●
Image Cleanup and Page Level Control	●	●	●
Hot Folders for PDF, PS, EPS, and TIFF	●	●	●
Support for Custom ICC Workflows	●	●	●
Image Editing (e.g., Despeckle, Deskew, Crop, Paste, Move, Margin, Offset, Rotate, and Scale)	●	●	●
Imposition	●	●	●
Automated E-mail Notifications	●	●	●
Automated Load Balancing	●	●	●
Mixed Image Formats	●	●	●
Mixed Paper Sizes	●	●	●
Multiple Engine Support	●	●	●
Native File Formats Supported – PS, EPS, JPEG, TIFF, GIF, and XPS	●	●	●
Optical Character Recognition (OCR)	OPT	OPT	●
Off-Hours Job Scheduling	●	●	●
PANTONE® Color Support	●	●	●
PCL6 File Support	OPT	OPT	●
Page Insertion and Document Merging with Chapterization	●	●	●
Page Numbering (e.g., Alpha, Numeric, and Roman with File Variables)	●	●	●
Page Set-up and Tagging	●	●	●
Paper Tray or Media Selection with Color-relevant Display	●	●	●
Custom Media Creation with Media Characteristics (e.g., Weight, Type, Color, etc.)	●	●	●
Power RIP for Simultaneous File Processing	1 RIP STD	1 RIP STD, 2 MAX	2 RIPS STD, 4 MAX
Remote Editing	OPT	●	●
TrueEdit Scanning	●	●	●
Advanced Tab Creation (Bleed edge, multi-bank, 3 lines of text)	●	●	●

Server Specifications

MicroPress 8.3 Solo

Dell® OptiPlex 990, Mini-Tower
 Windows® 7 Professional, 64-bit, SP1
 Windows XP Professional, 64-bit, SP2*
 Core i5-2400, 3.1GHz, 6M
 8GB, Non-ECC, 1333MHz DDR3, 2 x 4GB
 250GB SATA Hard Drive
 10 USB 2.0 Ports
 16x DVD+/-RW Drive

MicroPress 8.3 Plus

Dell OptiPlex 990, Mini-Tower
 Windows 7 Professional, 64-bit, SP1
 Windows XP Professional, 64-bit, SP2*
 Core i5-2400, 3.1GHz, 6M
 8GB, Non-ECC, 1333MHz DDR3, 2 x 4GB
 250GB SATA Hard Drive
 10 USB 2.0 Ports
 16x DVD+/-RW Drive

MicroPress 8.3 Max

Dell Precision T7500 Tower
 Windows 7 Professional, 64-bit, SP1
 Windows XP Professional, 64-bit, SP2*
 (2) Quad Core Xeon Processor E5607, 2.26 GHz, 8MB L3 Cache, 4.8GT/s
 12GB, DDR3 ECC SDRAM Memory, 1066MHz, 6X 2GB
 (3) 300GB SATA, 10K RPM 3.0Gb/s SATA 16MB Data BurstCache as RAID 0
 11 USB 2.0 Ports (2 Front, 6 Rear, 3 Internal)
 16x DVD+/- RW SATA

* Not available for Dutch configuration.

Canon
*image*ANYWARE

1-800-OK-CANON
www.usa.canon.com

Canon U.S.A., Inc.
 One Canon Plaza
 Lake Success, NY 11042

PANTONE® and other Pantone, LLC trademarks are the property of Pantone, LLC. CANON, IMAGEPRESS, IMAGERUNNER, COLORPASS, and IMAGEPASS are registered trademarks of Canon Inc. in the United States and may also be registered trademarks or trademarks in other countries. IMAGEANYWARE is a trademark of Canon. All other referenced product names and marks are trademarks of their respective owners and are hereby acknowledged. Some items may not be available at this time; please check for availability. Specifications and availability subject to change without notice. All screen images are simulated.
 ©2011 Canon U.S.A., Inc. All rights reserved.

1211R-MP-PDF-IH

Free Manuals Download Website

<http://myh66.com>

<http://usermanuals.us>

<http://www.somanuals.com>

<http://www.4manuals.cc>

<http://www.manual-lib.com>

<http://www.404manual.com>

<http://www.luxmanual.com>

<http://aubethermostatmanual.com>

Golf course search by state

<http://golfingnear.com>

Email search by domain

<http://emailbydomain.com>

Auto manuals search

<http://auto.somanuals.com>

TV manuals search

<http://tv.somanuals.com>