

Calculation Example / 計算範例 / Kalkulasi Contoh

CALCULATION	OPERATION	DISPLAY
		123456789012
▼ Mixed		(0.)
140-35+22=127	ON CA 140 = 35 + 22 =	(127.)
2x2-3=6	2 \times 2 = 3 =	(6.)
-7x9-=-63	7 = \times 9 =	(-63.)
(2+4)÷3x8.1=16.2	2 + 4 = 3 = \times 8 = 1 =	(16.2)
▼ Constant		
2+3=5	2 + 3 =	(5.)
4+3=7	4 + 3 =	(7.)
1-2=-1	1 = 2 =	(-1.)
2-2=0	2 = 2 =	(0.)
2x3=6	2 \times 3 =	(6.)
2x4=8	4 \times 2 =	(8.)
6÷3=2	6 = 3 =	(2.)
9÷3=3	9 = 3 =	(3.)
▼ Power, Fraction		
3 ⁴ =81	3 = = = =	(81.)
1/5=0.2	5 = =	(0.2)
1/(2x3+4)=0.1	2 = \times 3 + 4 = =	(0.1)
▼ Square Root		
$\sqrt{3} = 1.73205080756$ = 1.7320508	3 $\sqrt{\text{=}}$ (LS-154TG) (LS-63TG)	(1.73205080756) (1.7320508)
▼ Percentage		
1200x $\frac{12}{100}$ =144	1200 = \times 12 = =	(144.)
1200x $\frac{15}{100}$ =180	15 = =	(180.)
1200+(1200x20%)=1,440	1200 + 20 = =	(1'440.)
1200-(1200x20%)=960	1200 = 20 = =	(960.)

CALCULATION	OPERATION	DISPLAY
		123456789012
▼ Memory		
3x4= 12	CA 3 \times 4 = (LS-154TG)	(12.)
-) 6÷0.2= 30	(LS-63TG)	(M 12.)
-18	6 = 0.2 = 2 = (LS-154TG)	(M 30.)
+) 200	(LS-63TG)	(M 30.)
182	RM (LS-154TG)	(M -18.)
	(LS-63TG)	(M -18.)
	200 = (LS-154TG)	(M 200.)
	(LS-63TG)	(M 200.)
	RM (Recall Memory) (LS-154TG)	(M 182.)
	(LS-63TG)	(M 182.)
	RM (Clear Memory)	(182.)
▼ Tax Calculation		
Tax Rate Set Tax Rate = 5 %	CA SET TAX 5 SET TAX	(TAX% 0.) (TAX% 5.)
Add the Tax Amount Price \$2,000 without tax Selling price with tax? (\$2,100) Tax amount?=(100 \$)	2000 TAX+ TAX+	(2'000.) (TAX+ 2'100.) (TAX 100.)
Deduct Tax Amount Selling price \$3,150 with tax Price without tax? (\$3,000) Tax amount? = (\$150)	3150 TAX- TAX-	(3'150.) (TAX- 3'000.) (TAX 150.)
Recall Tax Rate	CA RECALL TAX	(TAX% 5.)
▼ Overflow		
1) 12345678x789000	12345678 \times	(E 9.74073994200)
=9740739942000 (LS-63TG : ERROR) (LS-154TG : ERROR)	789000 = (LS-154TG) (LS-63TG)	(E 97'407.399) (9.74073994200) (97'407.399)
2) 9999999999 (Add to Memory)	9999999999 = (M)	(M 999'999'999'999.)
123 (Add to Memory)	123 = (M)	(M 1.00000000012)
(LS-154TG)	CA	(0.)
	CA	(0.)
3) 6÷0=0 (ERROR)	6 = 0 =	(E 0.) (0.)

BATTERY

Battery: 1 Lithium battery (Type: CR2016)

ENGLISH

Replace battery

After replace the battery, press the [RESET] button.
After resetting be sure to set the tax rate again.

CAUTION: Risk of explosion if battery is replaced by an incorrect type dispose of used batteries according to the instruction.

電池

電池：1 顆鋰性電池 (型號：CR2016)

繁體中文

更換電池

更換電池後，請按下 [RESET] 按鈕。
重新設定後，請務必再次設定稅率。

注意： 如果更換為不正確類型的電池，可能會有爆炸危險。請依指示棄置用過的電池。

BATERE

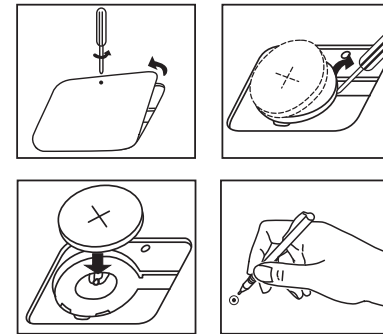
Batere: 1 batere Litium (Tipe: CR2016)

BAHASA INGGRIS

Mengganti batere

Setelah batere diganti, tekan tombol [RESET].
Setelah direset, tetapkan kembali nilai pajak.

Awas: Risiko terjadi ledakan jika batere diganti dengan jenis yang berbeda. Buanglah batere bekas sesuai dengan petunjuk.



POWER SUPPLY

This calculator comes with a dual power source solar cell and lithium battery. The duration of lithium battery depends entirely on individual usage.

■ Electromagnetic interference or electrostatic discharge may cause the display to malfunction or the contents of the memory to be lost or altered. Should this occur, use the tip of a ball point pen (or similar sharp object) to press the [RESET] button on the back of the calculator. After resetting, be sure to set the tax rate again.



KEY INDEX

- ON
 CA **On/Clear All Key** – Used for turning the calculator "ON". It is also used for clearing all data, including memory contents.
- CI
 C **Clear Indicator and Clear Key** – Press once to clear last entered value. Press again to clear all entered values, except memory. This key is also used for clearing the overflow error.
- SC **Sign Change Key** – Used for changing the sign (+ or -) of the displayed numbers.
- $\sqrt{\text{=}}$ **Square Root Key** – Used for performing square root calculations.
- $\text{P}\pm$ **Percent Plus-Minus Key** – Used for performing percentage, add-on and discount calculations.
- RM
 CM **Recall/Clear Memory Key** – A double function key. Press once to recall the memory contents. Press the key successively to clear the memory contents.
- $\text{M}\pm$ **Memory Plus Equal Key** – Used for obtaining a calculation result and adding the result automatically to the memory. This key is also used for adding number to the memory.
- $\text{M}\text{=}$ **Memory Minus Equal Key** – Used for obtaining a calculation result and subtracting the result automatically from the memory. This key is also used for subtracting a number from the memory.

TAX CALCULATION

- CA SET TAX **Store the Tax Rate** -- Press CA SET TAX and enter the tax rate figure, then press SET TAX to store.
- CA RECALL TAX **Recall the Tax Rate** -- Press CA RECALL TAX to recall the current tax rate.
- TAX+ **Add Tax Key** -- Used for adding the tax amount to the displayed figure.
- TAX- **Deduct Tax Key** -- Used for deducting the tax amount from the displayed figure.

OVERFLOW FUNCTION

In the following cases, when "E" is display, the keyboard is electronically locked, and further operation is impossible. Press = to clear the overflow. The overflow function occurs when:

- The result or the memory content exceeds 8 digits (LS-63TG) / 12 digits (LS-154TG) to the left of the decimal point.
- Dividing by "0".

SPECIFICATION

Power Source: Solar cell and Lithium battery (CR2016 x 1)
Automatic power-off: approx. **7 minutes**
Usable Temperature: 0 to 40°C (32 to 104°F)
Dimensions:

LS-154TG : 122mm (L) x 78mm (W) x 14mm (H)
4-51/64" (L) x 3-5/64" (W) x 35/64" (H)
LS-63TG : 103.5mm (L) x 63.5 (W) x 9mm (H)
4-5/64" (L) x 2-1/2" (W) x 23/64" (H)

Weight : LS-154TG : 92g (3.25oz)
LS-63TG : 47g (1.66oz)

(Subject to change without notice)

電源供應器

此計算機採用雙電源。鋰電池的使用時間完全一個人的使用情況而定。

- 電磁干擾或靜電釋放可能會造成顯示幕故障，或記憶體中的內容遺失或修改。如果發生這種情況，請使用鋼筆的筆尖（或細小的尖銳物體）壓入計算機背面的重設 [RESET] 按鈕。重設之後，請務必再次設定稅率。



按鍵索引

- ON/CA** **開機/全部清除按鍵** – 用於「開啟」計算機。它也可用於清除所有資料，包括記憶內容。
- CE** **清除指示燈與清除鍵** – 按一次可清除最後輸入的值。再按一次可以清除所有輸入的值，除了記憶以外。此按鍵也可用於清除溢滿錯誤。
- ±** **符號變更按鍵** – 用於變更所顯示數字的符號 (+ 或 -)。
- √** **平方根鍵** – 用於執行平方根計算。
- %±** **百分比正-負按鍵** – 用於執行百分比、附加數與折扣計算。
- RM/CM** **呼叫/清除記憶體按鍵** – 雙重功能按鍵。按一次可呼叫記憶體內容。連續按下該鍵可清除記憶體內容。
- M±** **記憶加法按鍵** – 用於取得計算結果並自動加總結果至記憶。此按鍵也可用於加總數字到記憶。
- M=** **記憶減法按鍵** – 用於取得計算結果並從記憶自動減去結果。此按鍵也可用於從記憶減去數字。

稅率計算

- CA** **SET TAX+** **儲存稅率** – 按下 **CA** **SET TAX+** 並輸入稅率數字，然後按下 **SET TAX+** 以儲存。
- CA** **RECALL TAX+** **呼叫稅率** – 按下 **CA** **RECALL TAX+** 以呼叫目前稅率。
- TAX+** **新增稅率按鍵** – 用於在顯示的數字中加入稅額。
- TAX-** **扣除稅率按鍵** – 用於在顯示的數字中扣除稅額。

溢滿功能

在以下情況下，當顯示“E”時，將以電子方式鎖定鍵盤，且無法再進行任何操作。按下 **CE** 以清除溢滿。當出現以下情形時，就會發生溢滿：

1. 計算結果或記憶內容的小數點左方數字超過 8 位數 (LS-63TG) / 12 位數 (LS-154TG)。
2. 除以 "0"。

規格

電力來源：太陽能電池與鋰電池 (CR2016 x 1)

自動關機：大約 7 分鐘

操作溫度：0°C 至 40°C (32°F 至 104°F)

尺寸：

LS-154TG : 122mm (長) x 78mm (寬) x 14mm (高)
4-51/64" (長) x 3-5/64" (寬) x 35/64" (高)

LS-63TG : 103.5mm (長) x 63.5mm (寬) x 9mm (高)
4-5/64" (長) x 2-1/2" (寬) x 23/64" (高)

重量：LS-154TG : 92 公克 (3.25 盎司)

LS-63TG : 47 公克 (1.66 盎司)

(如有變更，恕不另行通知)

CATU DAYA

Catu daya kalkulator ini berasal dari dua sumber tenaga. Umur batere Litium sangat tergantung pada pemakaian.

- Gangguan elektromagnetik atau pelepasan muatan elektrostatis dapat merusak tampilan atau menyebabkan isi memori hilang atau berubah. Apabila hal ini terjadi, gunakan ujung bolpoin (atau benda tajam serupa) untuk menekan tombol [RESET] di bagian belakang kalkulator. Setelah direset, pastikan untuk mereset nilai pajak.



INDEKS TOMBOL

- ON/CA** **Tombol Menyalakan/Menghapus Semua** – Digunakan untuk menyalakan kalkulator. Tombol ini juga digunakan untuk menghapus seluruh data, termasuk isi memori.
- CE** **Tombol Menghapus Indikator dan Menghapus** – Tekan sekali untuk menghapus nilai terakhir yang dimasukkan. Tekan sekali lagi untuk menghapus seluruh nilai yang telah dimasukkan, terkecuali memori. Tombol ini juga digunakan untuk menghapus kesalahan overflow.
- ±** **Tombol Mengubah Tanda** – Digunakan untuk mengubah tanda (+ atau -) dari angka yang ditampilkan.
- √** **Tombol Akar Kuadrat** – Digunakan untuk menghitung akar kuadrat.
- %±** **Tombol Plus-Minus Persen** – Digunakan untuk menghitung persentase, penjumlahan dan diskon.
- RM/CM** **Tombol Memanggil Kembali/Menghapus Memori** – Tombol fungsi ganda. Tekan sekali untuk memanggil kembali isi memori. Tekan tombol secara berurutan untuk menghapus isi memori.
- M±** **Tombol Memory Plus Equal** – Digunakan untuk mendapatkan hasil perhitungan dan menambahnya secara otomatis ke dalam memori. Tombol ini juga digunakan untuk menjumlahkan angka ke memori.
- M=** **Tombol Memory Minus Equal** – Digunakan untuk mendapatkan hasil perhitungan dan mengurangkannya secara otomatis dari memori. Tombol ini juga digunakan untuk mengurangkan angka dari memori.

KALKULASI PAJAK

- CA** **SET TAX+** **Menyimpan Nilai Pajak** – Tekan **CA** **SET TAX+** dan masukkan angka nilai pajak, selanjutnya tekan **SET TAX+** untuk menyimpan.
- CA** **RECALL TAX+** **Memanggil Kembali Nilai Pajak** – Tekan **CA** **RECALL TAX+** untuk memanggil kembali nilai pajak saat ini.
- TAX+** **Tombol Menambahkan Pajak** – Digunakan untuk menambahkan jumlah pajak pada angka yang ditampilkan.
- TAX-** **Tombol Memotong Pajak** – Digunakan untuk memotong jumlah pajak dari angka yang ditampilkan.

FUNGSI OVERFLOW

Di dalam kasus berikut, apabila muncul tampilan "E", papan tombol yang terkunci secara elektronik, dan operasi lebih lanjut adalah mustahil. Tekan **CE** untuk menghapus overflow. Fungsi overflow terjadi manakala:

1. Hasil isi memori lebih dari 8 digit (LS-63TG) / 12 digit (LS-154TG) ke kiri titik desimal.
2. Dibagi dengan "0".

SPESIFIKASI

Sumber Daya: Sel matahari dan batere Litium (CR2016 x 1)

Catu Daya Mati Otomatis: lebih kurang 7 menit

Suhu Operasi : 0°C sampai 40°C (32°F sampai 104°F)

Dimensi:

LS-154TG : 122mm (L) x 78mm (P) x 14mm (T)
4-51/64" (L) x 3-5/64" (P) x 35/64" (T)

LS-63TG : 103.5mm (L) x 63.5 (P) x 9mm (T)
4-5/64" (L) x 2-1/2" (P) x 23/64" (T)

Berat : LS-154TG : 92g (3.25oz)

LS-63TG : 47g (1.66oz)

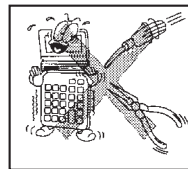
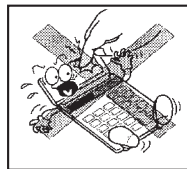
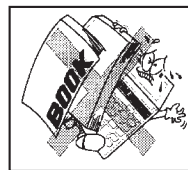
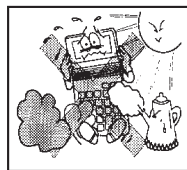
(Dapat berubah tanpa pemberitahuan)

Download from www.Somanuals.com. All Manuals Search And Download.

Taking Care Of Your Calculator /

請愛護您的計算機 /

Merawat Kalkulator Anda



CANON ELECTRONIC BUSINESS MACHINES (H.K.) CO., LTD.

17/F., Ever Gain Plaza, Tower One, 82-100 Container Port Road, Kwai Chung, New Territories, Hong Kong

ABILITY SHI-PRO CO., LTD.

No. 10, Alley 6, Lane 141, Fu-Shing North Road Taipei, Taiwan, 105 R.O.C.

DAI PHONG TRADING CO., LTD.

A25 Cao Thang Prolong St., Ward 12, Dist. 10 HCMC, Vietnam
Tel : 848-8622449 ~ 451 Fax : 848-2650603

E-mail : nguyen.thanh.tam@abico.com.vn

Website : <http://www.abico.com.vn>

SOLID BUSINESS MACHINES CENTER INC.

Suite 303, Singson Building Plaza Moraga, Binonda, Manila, Philippines

WELLTECH GROUP CO., LTD.

13/27, 15/28, Moo 9 Kaset-Naramintra Road, Klongkum, Bungkum, Bangkok 10230, Thailand

CANON MARKETING (MALAYSIA) SDN BHD.

Block D, Peremba Square, Saujana Resort, Section U2, 40150 Shan Alam, Selangor Darul Ehsan, Malaysia

CANON KOREA BUSINESS SOLUTIONS INC.

#168-12, Samseong-dong, Gangnam-gu, Seoul, Korea

CANON AUSTRALIA PTY, LTD.

1 Thomas Holt Drive, North Ryde, Sydney, N.S.W. 2113, Australia

Free Manuals Download Website

<http://myh66.com>

<http://usermanuals.us>

<http://www.somanuals.com>

<http://www.4manuals.cc>

<http://www.manual-lib.com>

<http://www.404manual.com>

<http://www.luxmanual.com>

<http://aubethermostatmanual.com>

Golf course search by state

<http://golfingnear.com>

Email search by domain

<http://emailbydomain.com>

Auto manuals search

<http://auto.somanuals.com>

TV manuals search

<http://tv.somanuals.com>