



# Installing Your Printer to the Network for the First Time

PIXMA iP110

Mac OS

# Installing Your Printer to the Network for the First Time

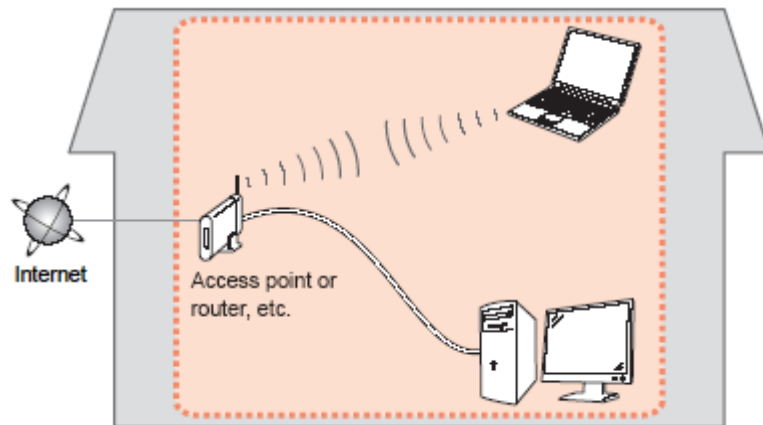
PIXMA iP110 Mac OS

<b>Preparing to Connect the Printer to the Network</b>	<b>3</b>
Network Requirements Notes	3
on Wireless Connection	4
<b>Installing the Drivers &amp; Software</b>	<b>5</b>

# Preparing to Connect the Printer To the Network

## Network Requirements

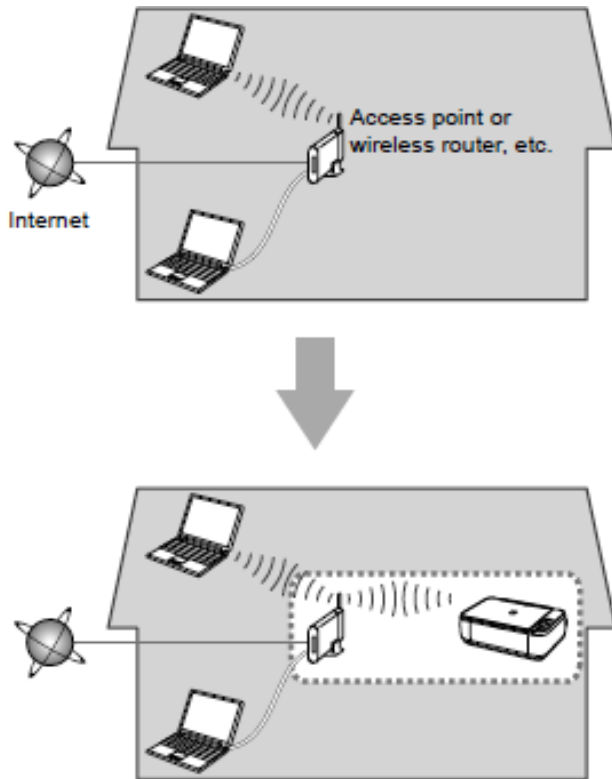
Before connecting the machine to the network, make sure that configuration of the computer and access point or router is complete, and that the computer is connected to the network.



## Wireless Connection

Before connecting the machine to the network, the computer needs to be connected to the network. Make sure that configuration of the computer and access point or router is complete.

# Preparing to Connect the Printer To the Network



## Notes on Network Connection

- The configuration, router functions, setup procedures and security settings of the network device vary depending on your system environment. For details, refer to your device's instruction manual or contact its manufacturer.
- In an office setup, consult your network administrator
- If you connect to a network that is not protected with security measures, there is a risk of disclosing data such as your personal information to a third party.
- Place the machine and computer on the same network segment.

# Installing the Drivers & Software

## Software Installation

To use the machine by connecting it to a computer, software including the drivers needs to be copied (installed) to the computer's hard disk. Installation time varies depending on the computer environment or the number of application software to be installed.

### **IMPORTANT**

- Log on as the administrator (or a member of the Administrators group).
- Quit all running applications before installation.
- Do not switch users during the installation process.
- Internet connection may be required during the installation. Connection fees may apply. Consult the internet service provider.
- If the firewall function of your security software is turned on, a warning message may appear that Canon software is attempting to access the network. If such a warning message appears, set the security software to always allow access.

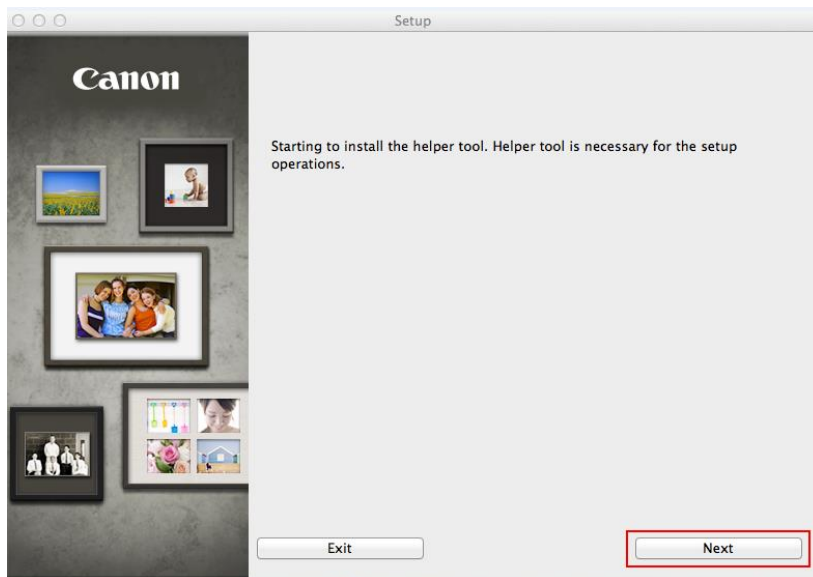
# Installing the Drivers & Software

To begin setup of your PIXMA iP110 on your wireless network, you must first download the software to your computer. [Access the iP110 Setup page](#), read the information, then click the **Download** button.

After the file has downloaded successfully, double-click it to start the install procedure.

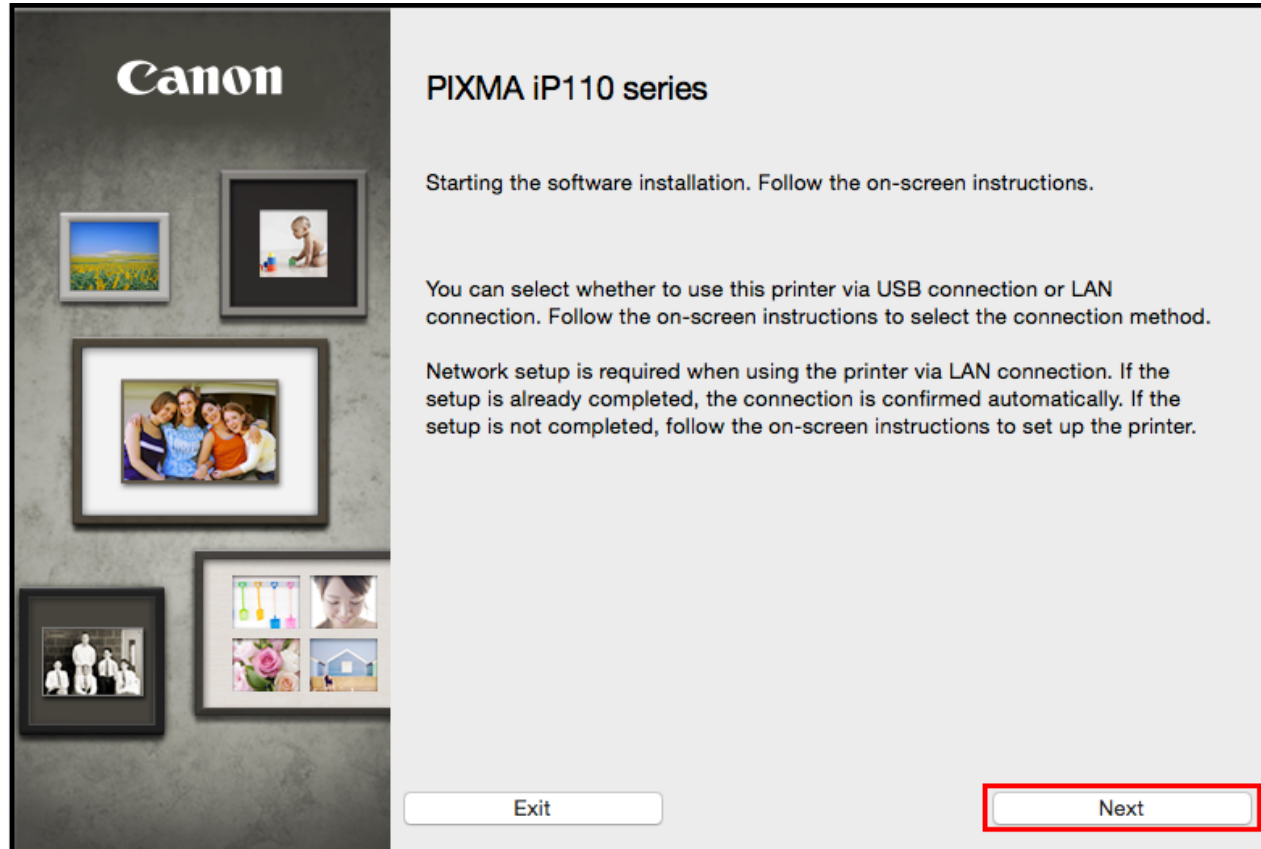
The setup instructions presented in this document describe the “**Cableless Setup**” method which does not require the need to know the SSID (network name), or network passphrase and does not require the printer to be temporarily connected to the computer with a USB cable.

Click **Next** on the first screen. If prompted, enter the Administrative Password to continue.



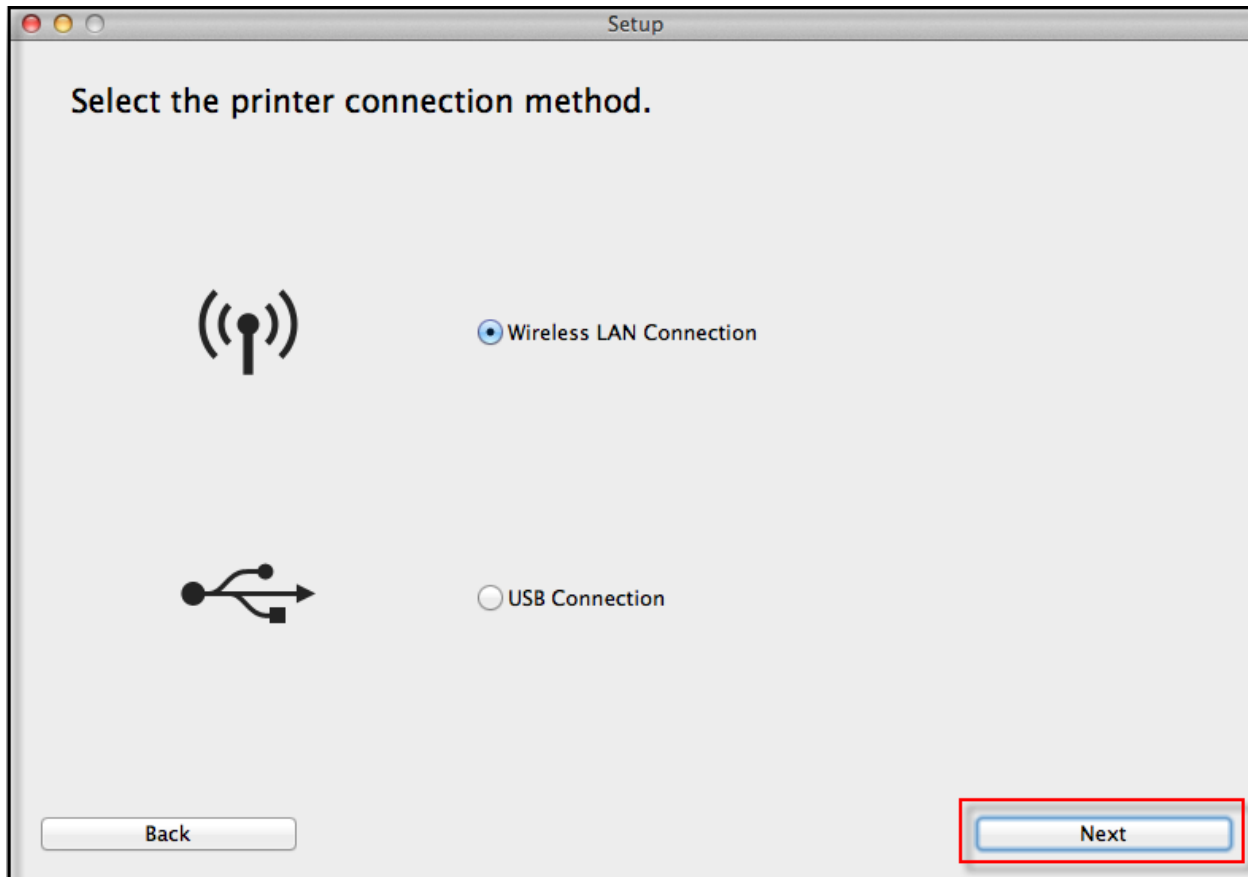
# Connecting to the Network

Click **Next** on the following screen.



# Connecting to the Network

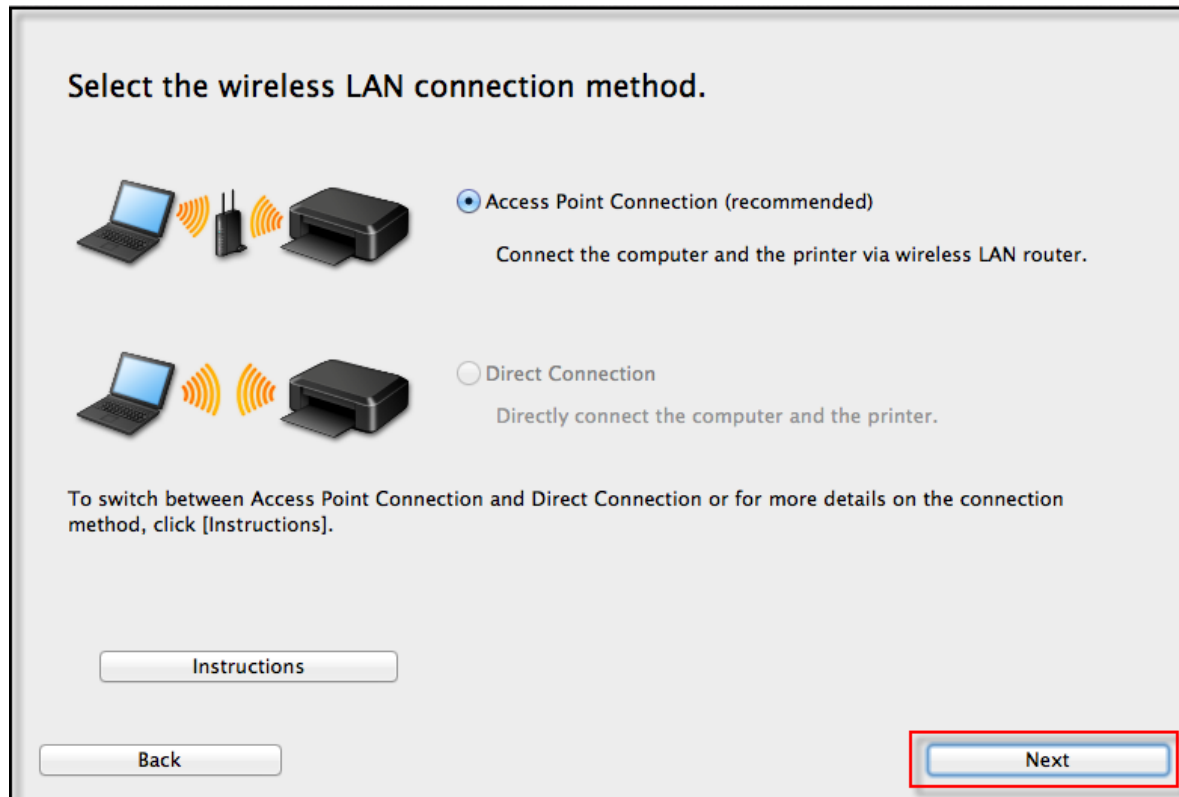
Follow on-screen instructions. Select **Wireless LAN Connection** and click **Next** on the following screen.





# Connecting to the Network

Follow on-screen instructions. Select **Access Point Connection** and click **Next** on the following screen.



# Connecting to the Network

Continue following on-screen instructions. On the **Printers on Network List**, check the **Setting printer could not be found on the list** checkbox and click **Next**.

### Printers on Network List

Serial Number	MAC Address	IP Address

Setting printer could not be found on the list

Update

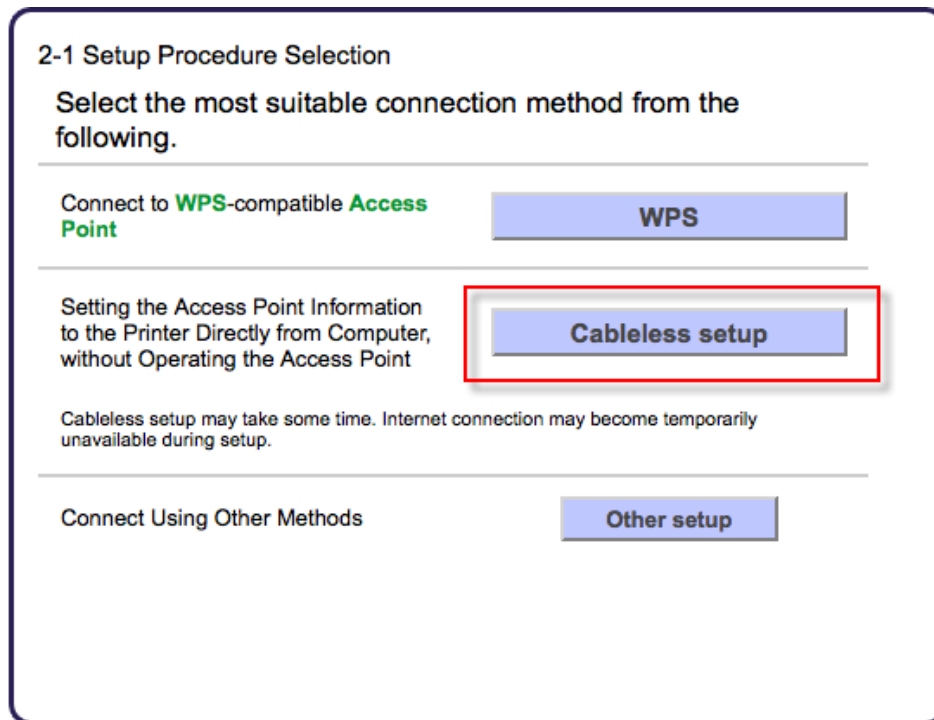
1. To set a printer on the network, select one from the above printers list, and then click [Next]. Serial number can be found on the back of the printer or the Letter of Guarantee.
2. If the setting printer could not be found on the above list, turn on the printer and click [Update].
3. If the printer could not still be found, select [Setting printer could not be found on the list], and the click [Next].

Back Next

# Connecting to the Network

Continue to follow on-screen instructions.

Select **Cableless setup** on the **Setup Procedure Selection** screen (2-1).



2-1 Setup Procedure Selection

Select the most suitable connection method from the following.

---

Connect to **WPS-compatible Access Point**

---

Setting the Access Point Information to the Printer Directly from Computer, without Operating the Access Point

Cableless setup may take some time. Internet connection may become temporarily unavailable during setup.

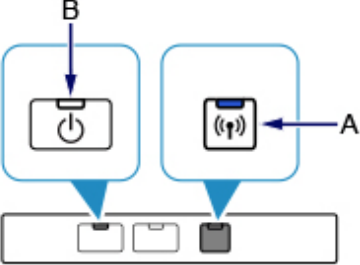
---

Connect Using Other Methods

# Connecting to the Network

Carefully follow the instructions on the **Connection via Cableless setup** screen. (3-1). Click **Next**

3-1 Connection via **Cableless setup**



The diagram shows a printer's control panel with three buttons. The leftmost button is labeled 'B' and has a power symbol. The middle button is labeled 'A' and has a Wi-Fi symbol. The rightmost button is a solid grey button. Callout boxes with arrows point from the labels 'B' and 'A' to their respective buttons. Below the buttons is a horizontal line.

1. Hold down the **Wi-Fi** button (A) on the printer until the **POWER** lamp (B) flashes 2 times, then release the **Wi-Fi** button after the second flash.

Start Again      Back      **Next**

# Connecting to the Network

Carefully follow the instructions on the **Connection via Cableless setup** screen. (3-2). Click **Next**

**3-2 Connection via Cableless setup**

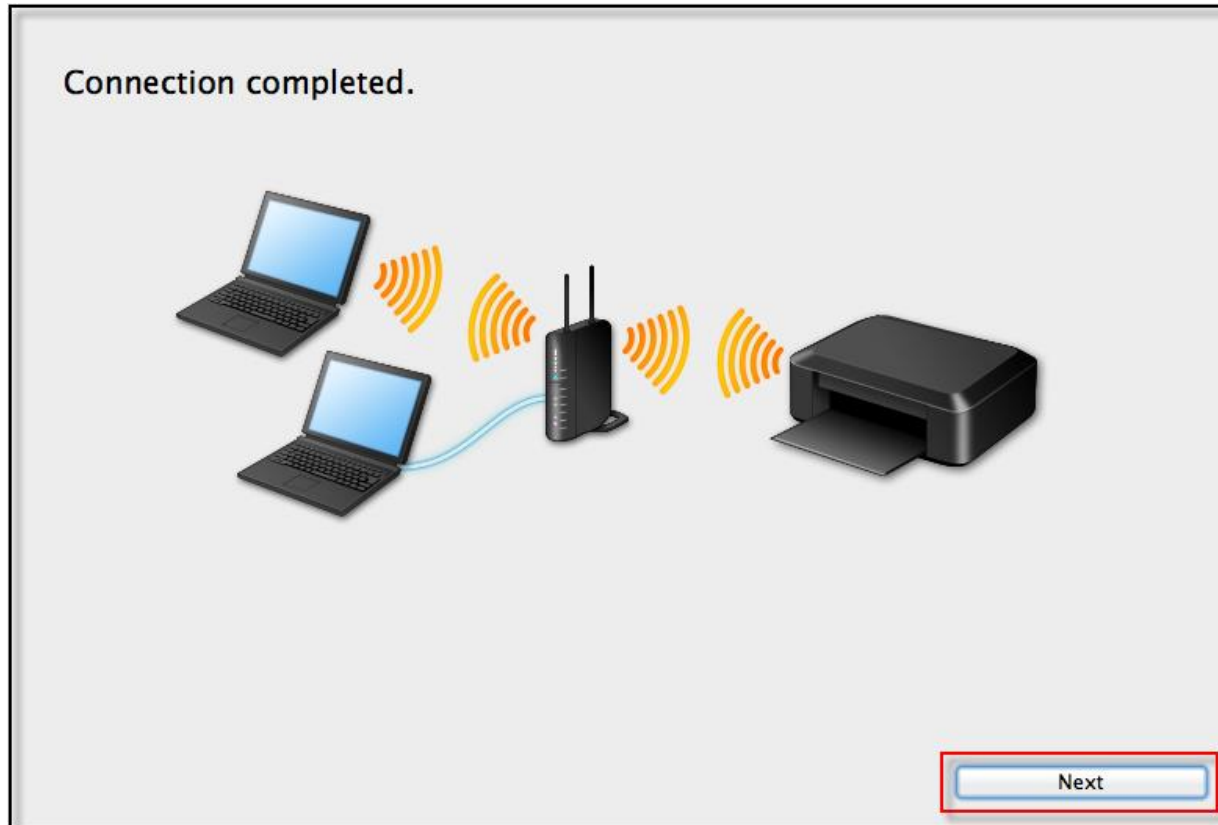
1. Make sure that the **Wi-Fi** lamp (A) flashes quickly and the **POWER** lamp is lit as shown in the illustration above.

2. Click **Next**, then follow the instructions on the next screen to proceed with setup.

Start Again      Back      Next

# Connecting to the Network

Click **Next** on the **Connection Completed** screen.



# Installing the Drivers & Software

Continue following on-screen instructions. On the **Software Installation List**, select \*software to install and click **Next**.

\***Printer Driver** and **Canon IJ Network Tool** are required and cannot be deselected. We recommend installing **My Image Garden** and **Quick Menu** to take full advantage of the printer's features.

## Software Installation List

The selected software will be installed. Make sure that the software you want to install is selected, and then click [Next].

You need to install all the software below to use all functions of this printer.

<input checked="" type="checkbox"/>	Printer Driver	100 MB	Drive Macintosh HD 961764 MB free space
<input type="checkbox"/>	User's Manual	124 MB	
<input type="checkbox"/>	My Image Garden	705 MB	Total used space: 184 MB
<input type="checkbox"/>	Quick Menu	25 MB	
<input checked="" type="checkbox"/>	Canon IJ Network Tool	20 MB	
<input type="checkbox"/>			
<input type="checkbox"/>			
<input type="checkbox"/>			
<input type="checkbox"/>			
<input type="checkbox"/>			
<input type="checkbox"/>			
<input type="checkbox"/>			

Select All

Clear All

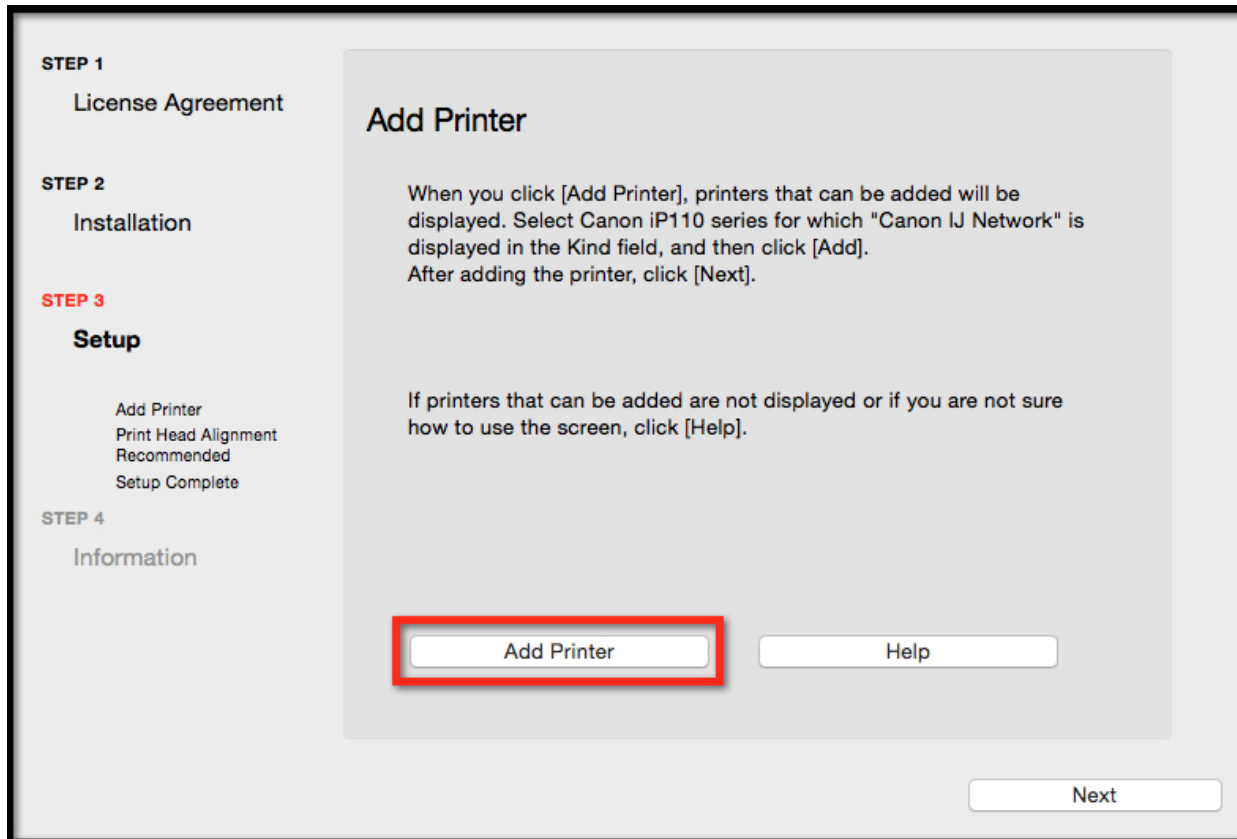
Installation may take some time depending on your network environment.

Back

**Next**

# Adding the Printer

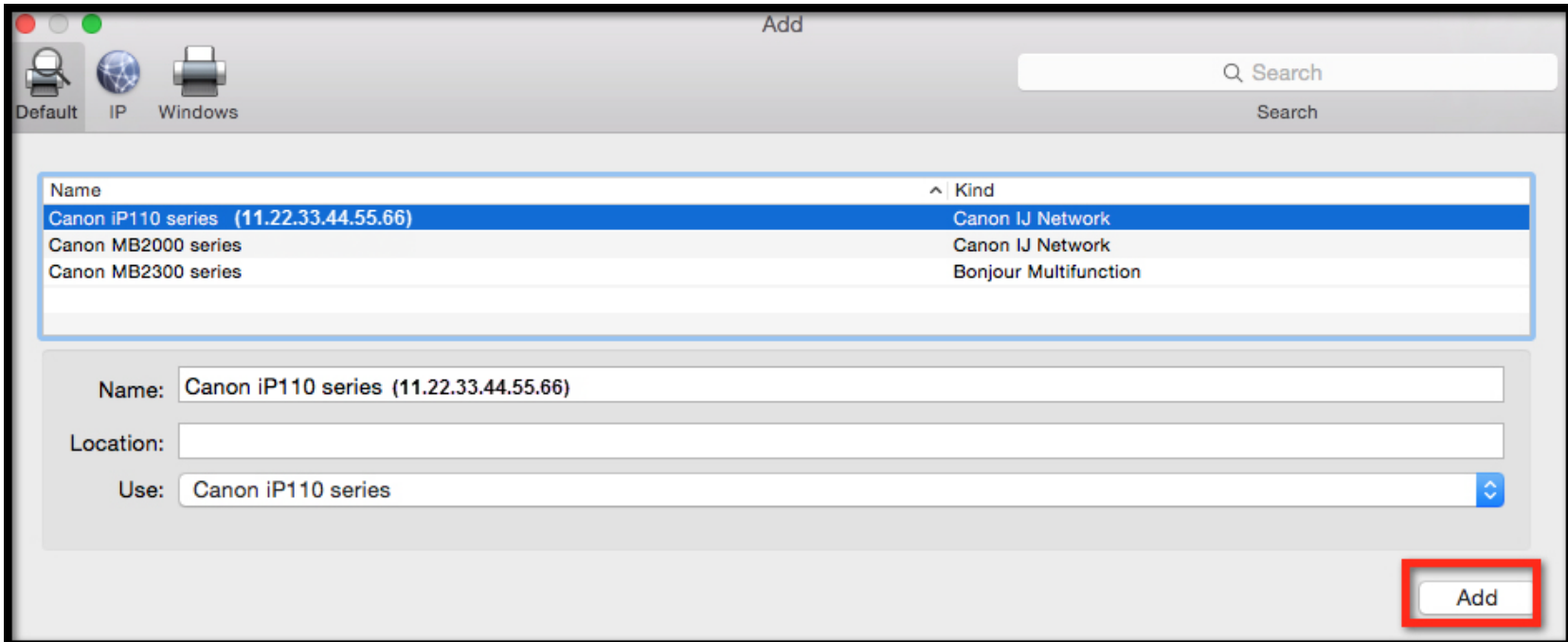
Continue following the on-screen instructions.  
When the **Add Printer** screen appears, click **Add Printer**.





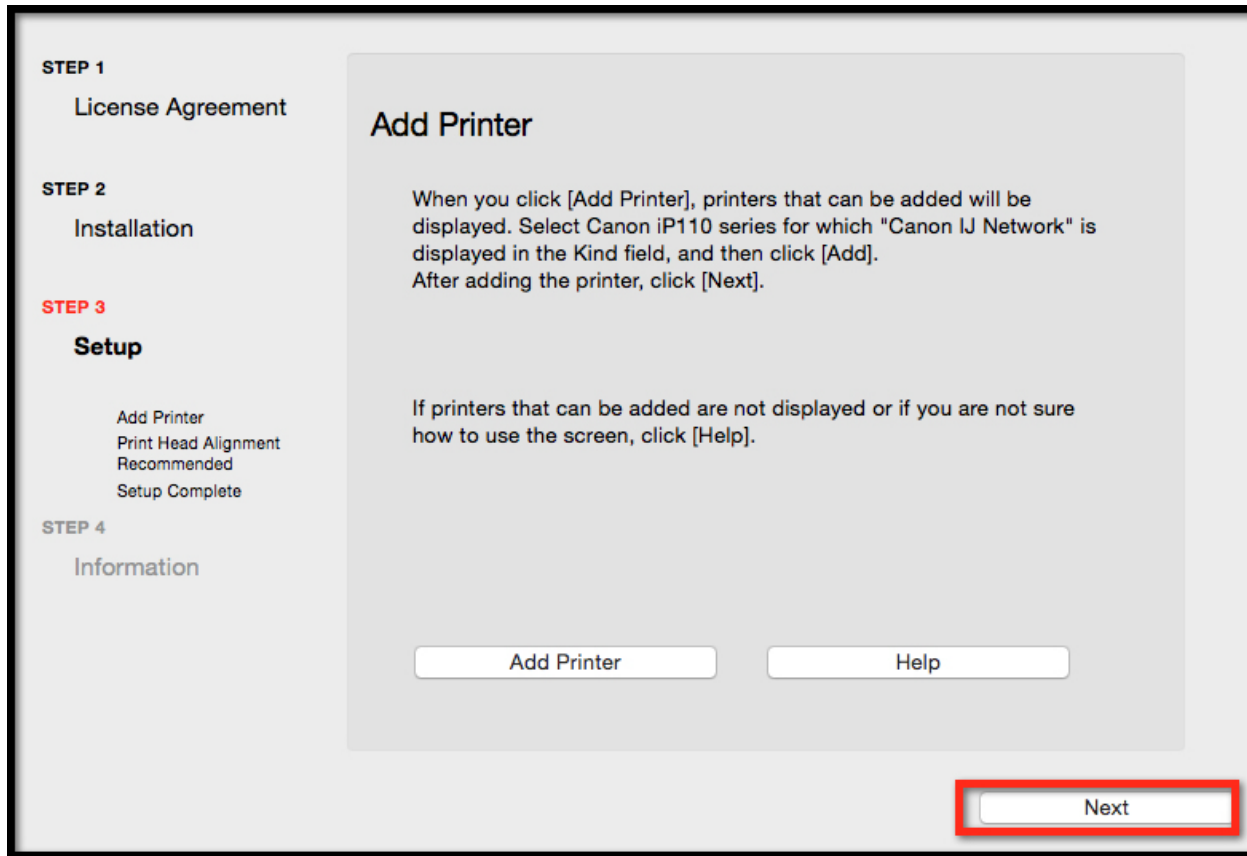
# Adding the Printer

Select the **Canon iP110** with **Canon IJ Network** listed in the **Kind** column, then click **Add**.



# Adding the Printer

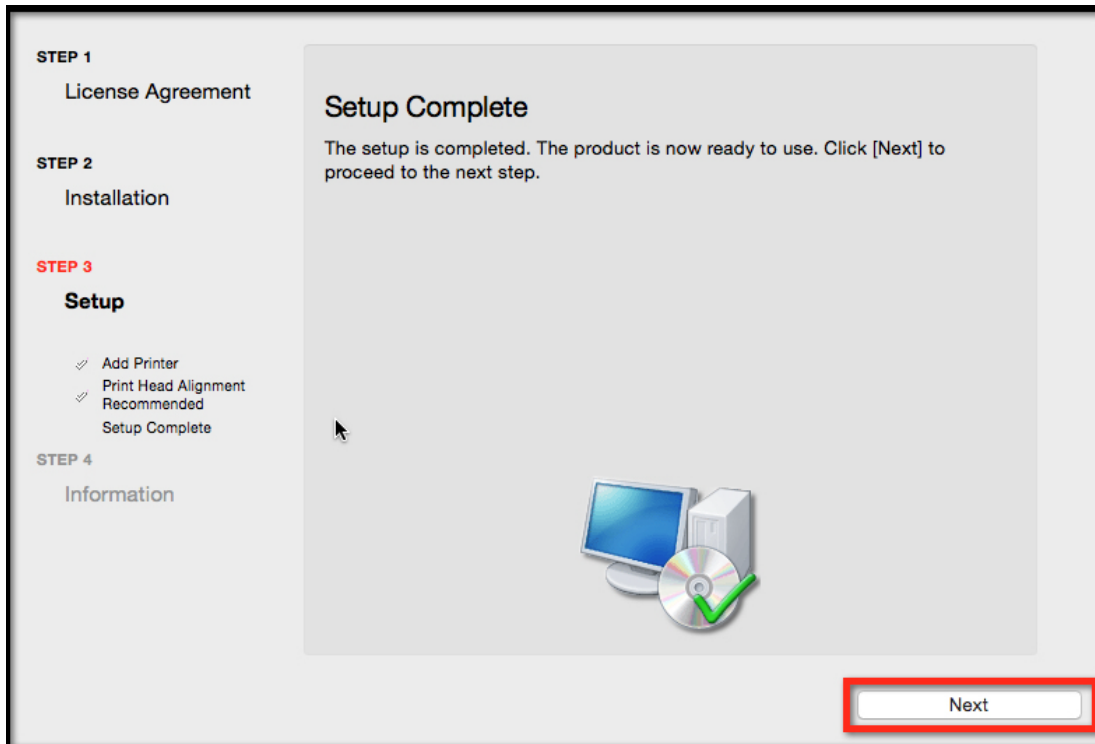
Click **Next** on the **Add Printer** screen



# Completing the Setup

Continue following on-screen instructions.

When the **Setup Complete** screen appears, click **Next**.



At this point, setup of the printer and network is complete. Continue to follow any remaining on-screen instructions to finish and exit the setup program.

## Free Manuals Download Website

<http://myh66.com>

<http://usermanuals.us>

<http://www.somanuals.com>

<http://www.4manuals.cc>

<http://www.manual-lib.com>

<http://www.404manual.com>

<http://www.luxmanual.com>

<http://aubethermostatmanual.com>

Golf course search by state

<http://golfingnear.com>

Email search by domain

<http://emailbydomain.com>

Auto manuals search

<http://auto.somanuals.com>

TV manuals search

<http://tv.somanuals.com>