

# Installing Your Multifunction to Your Network for the First Time

PIXMA MP990 / PIXMA MP640 / PIXMA MP560

Windows OS

# Installing Your Multifunction to Your Network for the First Time

PIXMA MP990 / PIXMA MP640 / PIXMA MP560  
Windows OS

<b>Preparing to Connect My Multifunction to My Network</b>	<b>3</b>
Network Requirements	3
Important Information You Need Before Adding Your Multifunction	4
<b>Adding Your Multifunction to the Network</b>	<b>5</b>
Confirm Connection Status	9
<b>Downloading &amp; Installing the Drivers</b>	<b>12</b>
Downloading the Driver	12
Installing the Driver	15

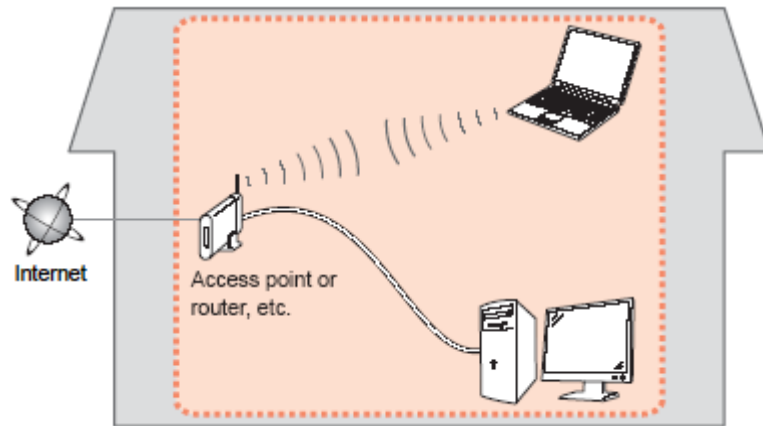
# Preparing to Connect My Multifunction To My Network

[<< Previous](#)

[Next >>](#)

## Network Requirements

Before connecting the machine to the network, make sure that configuration of the computer and access point or router is complete, and that the computer is connected to the network.



### Notes on Network Connection

- The configuration, router functions, setup procedures and security settings of the network device vary depending on your system environment. For details, refer to your device's instruction manual or contact its manufacturer.
- The machine cannot be used over a wireless and wired connection at the same time.

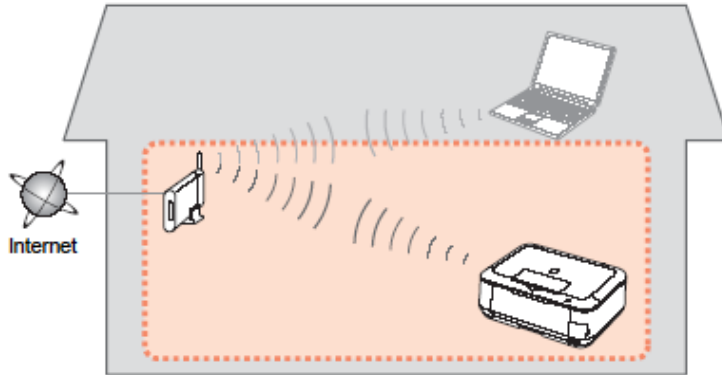
### Wireless Connection

Connect to your network environment over a wireless connection.

# Preparing to Connect My Multifunction To My Network To My Network

[<< Previous](#)

[Next >>](#)



An "Ad-hoc connection," which establishes a direct connection to the computer over a wireless connection without using an access point, is not supported.

**Be sure to prepare an access point.**

## **Important Information You Need Before Adding Your Multifunction**

The following information is required to connect to your access point or router.

- **Access Point Name/Network Name:**

Also referred to as **SSID**. A name to identify the specific access point.

- **Network Key:**

Also referred to as encryption key, WEP key or WPA/WPA2 passphrase, Pre-Shared key.

A password is required to prevent unauthorized access to communication.

Check your access point or router for the following information, and then write it down.

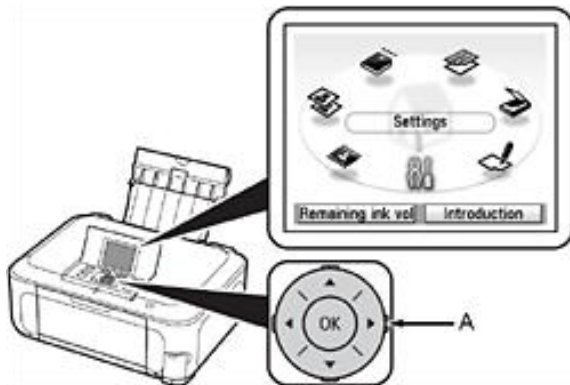
**NOTE:** For details on how to check the following information, refer to the manual of your access point or router, or contact its manufacturer.

## Adding Your Multifunction to Your Network

### Step One

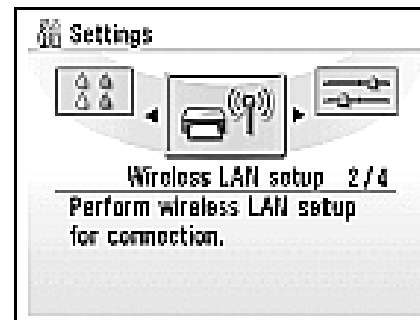
Use the Easy-Scroll Wheel\* (A) to select **Settings**, and then press the OK button.

\*Easy-Scroll Wheel location varies according to model. MP640 pictured in examples below.



### Step Two

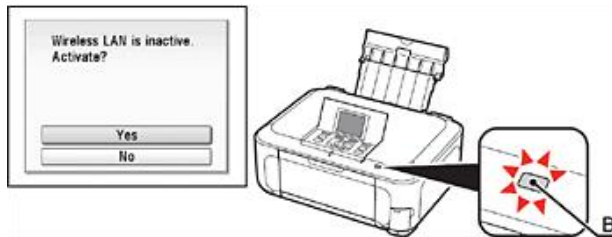
Select Device settings, then press the **OK** button.



## Step Three

Select **Yes**, then press the OK button.

When wireless connection is enabled, the Wi-Fi lamp\*\* (B) lights blue.



\*\*Wi-Fi lamp location varies according to model.

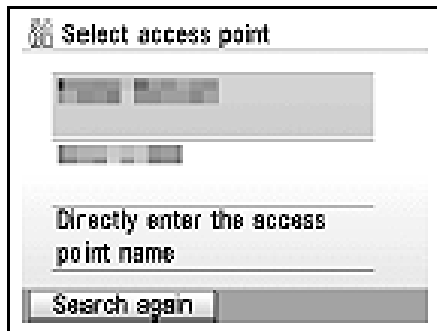
## Step Four

Select Change wireless / wired, then press the **OK** button.



## Step Five

Select the access point name you wrote down, then press the **OK** button.



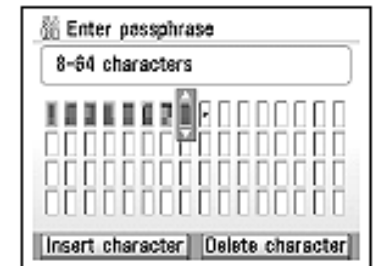
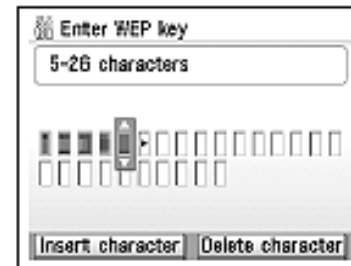
**NOTE:** If you are living in an apartment, nearby access points in use may be detected.

## Step Six

When one of the following screens is displayed, enter the network key you wrote down, then press the **OK** button.

If the following screen is not displayed, go to Step Eight.

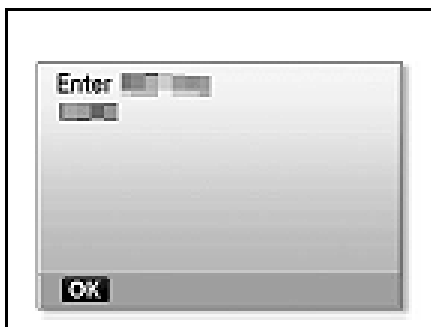
Use the Easy-Scroll Wheel to select the character. Use the **▶** button to move the cursor to the right.



**IMPORTANT:** Enter upper and lower case letters of the alphabet correctly.

## Step Seven

Make sure that the network key is correct, and then press the **OK** button.

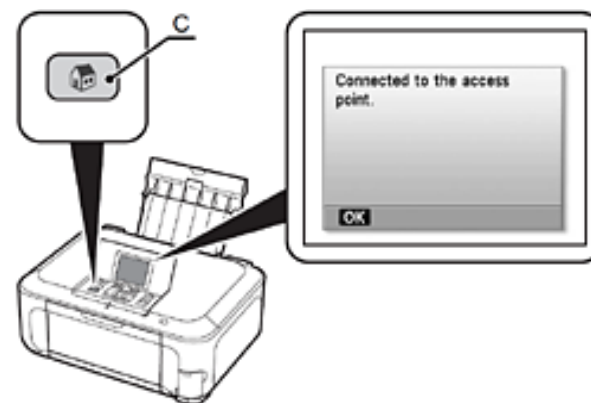


## Step Eight

When the completion screen appears, press the OK button, then press the HOME\*\*\* button (C).

\*\*\*HOME button location varies depending on model.

The standby screen returns.



**NOTE:** If Failed to connect to the access point. appears, press the OK button, make sure that the network key is correct, then enter it again. If a connection still cannot be established, refer to the printed manual: Network Setup Troubleshooting.

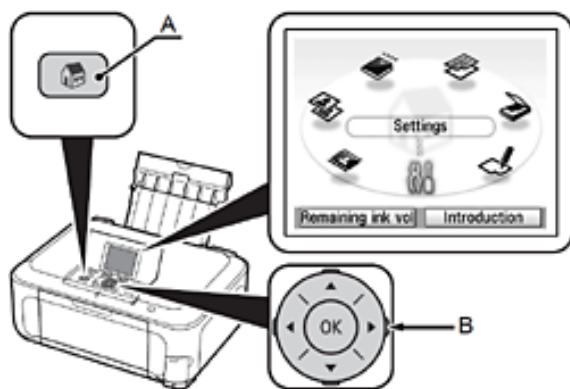


## Confirm Connection Status

### Step One

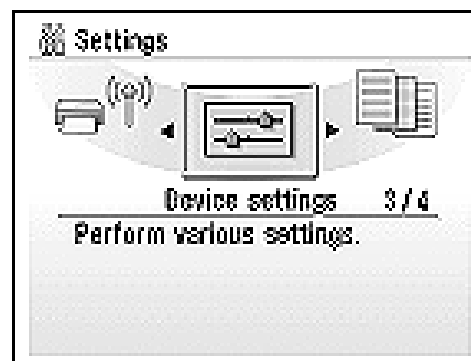
Press the HOME\*\*\* button (A), select **Settings** using the Easy-Scroll Wheel (B), and then press the **OK** button.

\*\*\*HOME button location varies depending on model.



### Step Two

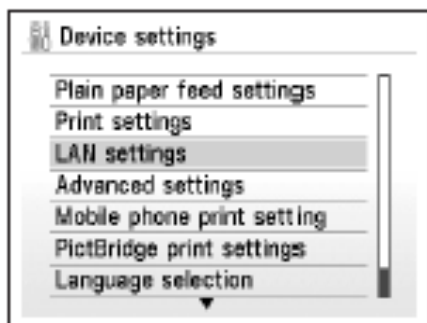
Select **Device settings**, and then press the **OK** button.



**IMPORTANT:** Confirm connection status after installing the machine in the target location.

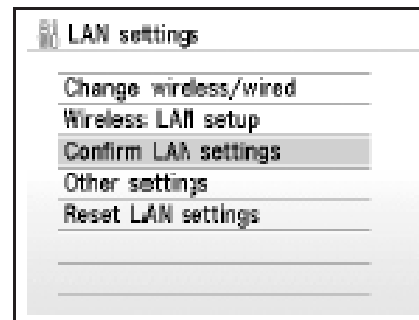
## Step Three

Select **LAN settings**, and then press the OK button.



## Step Four

Select **Confirm LAN settings**, then press the OK button.



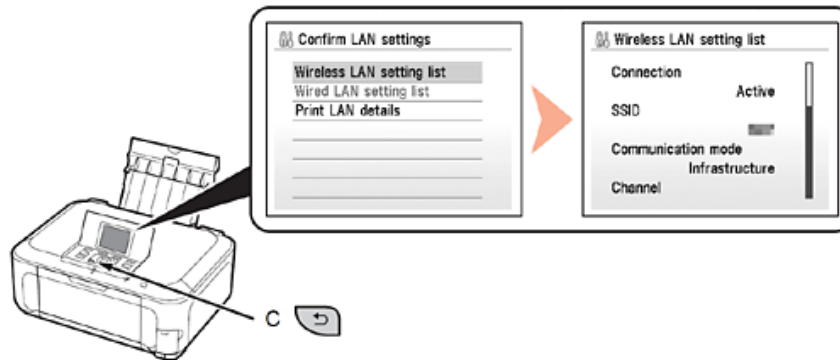
## Step Five

Select **Wireless LAN setting list**, then press the OK button.

Make sure that Connection is set to **Active**, and then press the **HOME** button.

It may take a while before the connection is complete. In this case, press the Back\* button (C) and wait for about a minute, then display the Wireless LAN setting list screen again.

\*Back button location varies depending on model.



### NOTE:

- If the communication status does not improve, make sure of the following.
- The machine and network device are turned on.
- There is no obstacle between the machine and access point, and wireless communication is possible.
- There is no microwave, refrigerator or any other object that may cause radio interference nearby.

## Downloading the Driver

To use the machine by connecting it to a computer, software including the drivers needs to be copied (installed) to the computer's hard disk. The installation process takes about 20 minutes. (The installation time varies depending on the computer environment or the number of applications to be installed.)

### Step One

Go to the **Drivers & Software** for your model

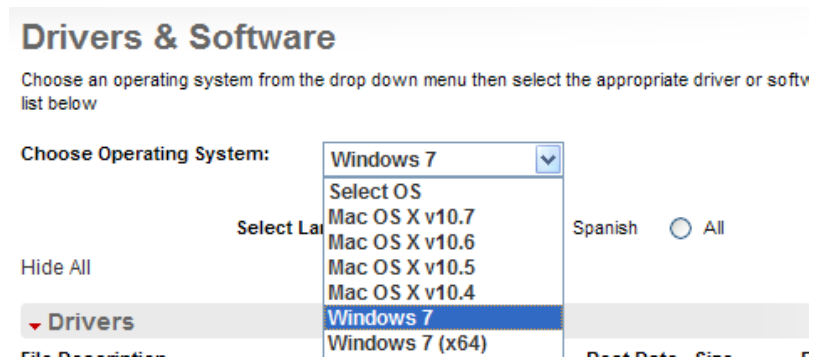
[MP640](#)

[MP560](#)


[MP990](#)

### Step Two



Select your operating system in the **Select OS** dropdown menu.



## Step Three

In the Drivers section, click the Download icon  for the **MP Driver**  
**\*Name varies by model**

example: MP990

▼ Drivers			
File Description	Post Date	Size	Download
 <b>MP990 series MP Driver Ver. 1.04 (Windows 7/7..</b> File Name: mp990swin104ej.exe	09/07/10	17.36MB	

\* The file name turns red when the mouse pointer is on the file name

## *Step Four*

On the next screen, read the information and instructions and click **I Agree - Begin Download**

Select [Save] or [Run]. If [Run] is selected, the file will be automatically installed

If [Save] is selected, once the file has been downloaded, double-click it to begin the installation process

### **IMPORTANT:**

- Quit all running applications before installation.
- Log on as the administrator (or a member of the Administrators group).
- Do not switch users during the installation process.
- Internet connection may be required during the installation. Connection fees apply.
- It may be necessary to restart your computer during the installation process. Follow the on-screen instructions. The installation resumes once your computer has restarted.

If the firewall function of your security software is turned on, a warning message may appear that Canon software is attempting to access the network. If such a warning message appears, set the security software to always allow access.

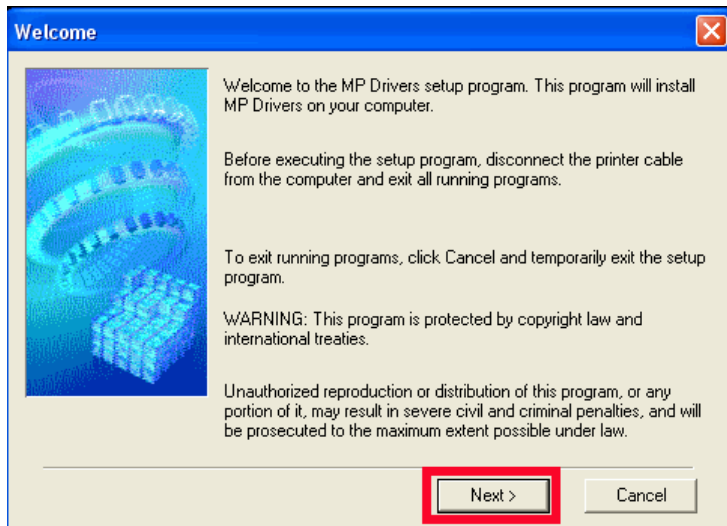
## Installing the Driver

**NOTE:** If a **User Account Control** screen appears, click **Continue** or **Yes** (depending on Windows version) to continue.

**NOTE:** If the same screen reappears in subsequent steps, click **Continue** or **Yes**.

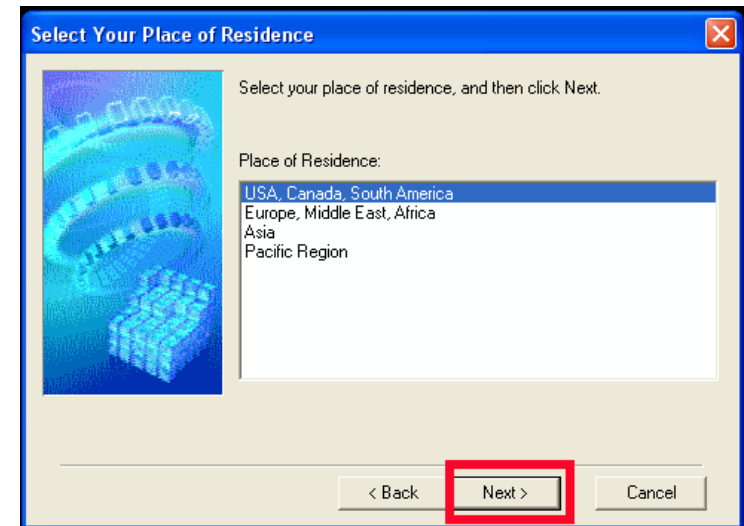
### Step One

Click **Next** on the **Welcome** screen.



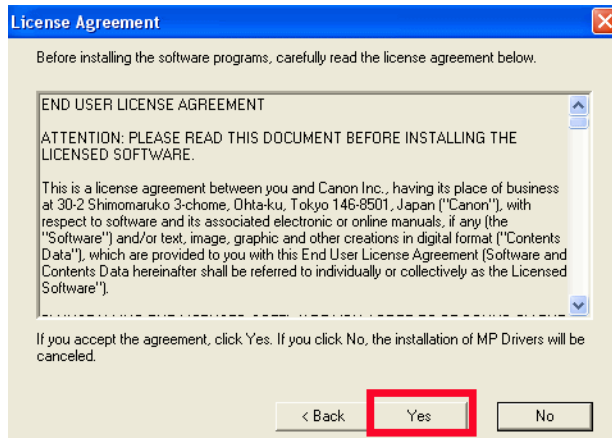
### Step Two

Select your place of residence and click **Next**.

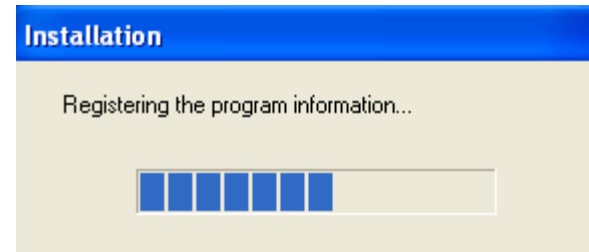


## Step Three

Click **Yes** for the License Agreement.



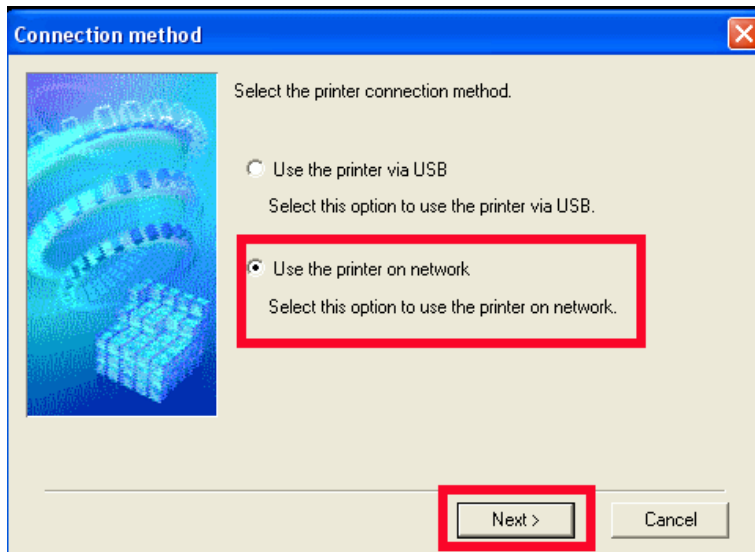
Installation proceeds





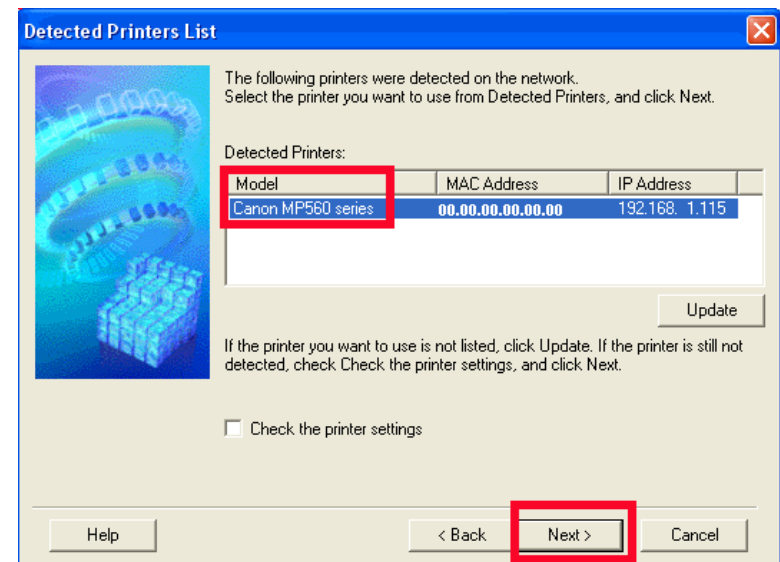
## Step Four

Select **Use the Printer on network** on the **Connection method** screen, and then click **Next**.



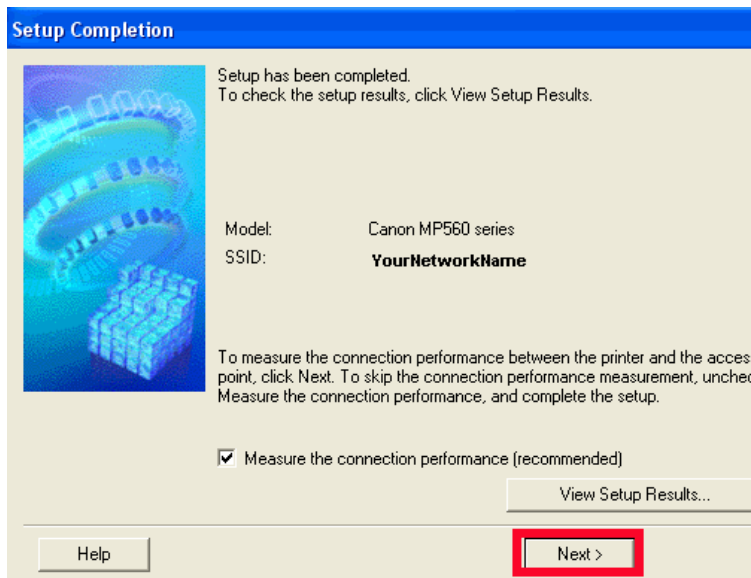
## Step Five

After searching for printers, the **Detected Printers List** appears. Verify your printer is detected and click **Next**.



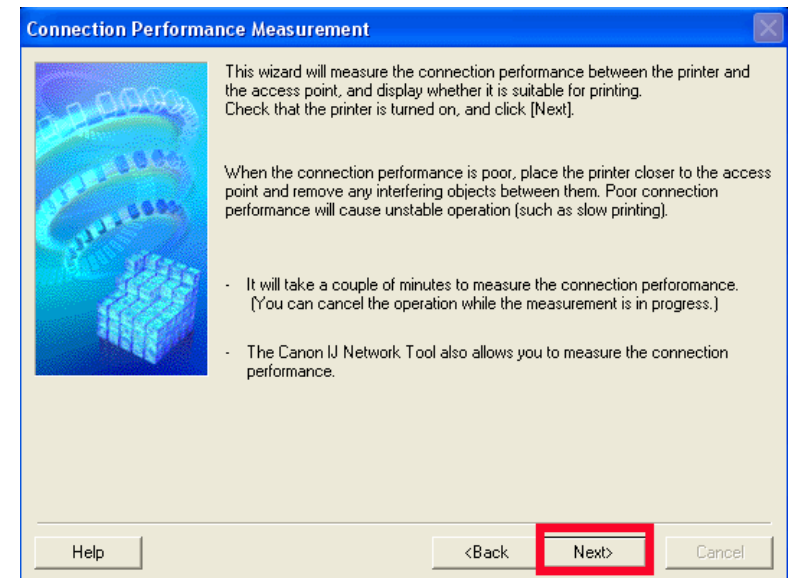
## Step Six

Setup will install the driver components. After completion, click **Next** on the **Setup Completion** screen.



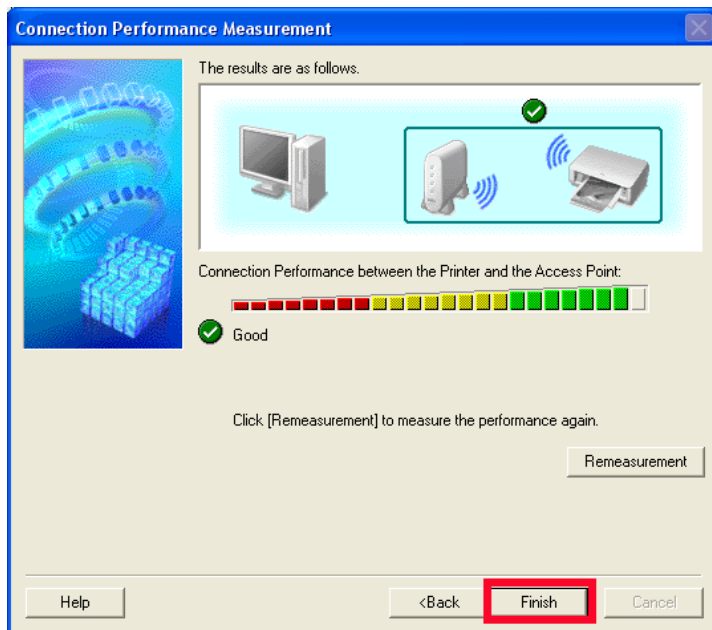
## Step Seven


When the **Connection Performance Measurement** dialog box appears, click **Next**.




## Step Eight

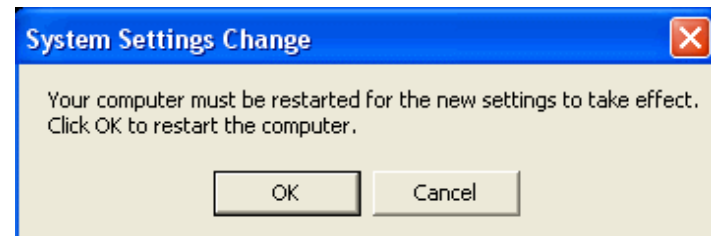
Confirm the measurement results, and then click **Finish**.



Ensure that  is displayed in Connection Performance between the Printer and the Access Point.

- If an icon other than  appears, improve the communication status by referring to the displayed message or the help file, then click **Remeasurement**.

If the following window appears, click OK to restart or Cancel to restart later



## Free Manuals Download Website

<http://myh66.com>

<http://usermanuals.us>

<http://www.somanuals.com>

<http://www.4manuals.cc>

<http://www.manual-lib.com>

<http://www.404manual.com>

<http://www.luxmanual.com>

<http://aubethermostatmanual.com>

Golf course search by state

<http://golfingnear.com>

Email search by domain

<http://emailbydomain.com>

Auto manuals search

<http://auto.somanuals.com>

TV manuals search

<http://tv.somanuals.com>