

Canon ScanFront 220/220P System Software Update

Instructions

ScanFront 220/220P system software updates are distributed as .bin files. These files can be downloaded from the Drivers and Downloads area of the Canon USA support web site (<http://www.usa.canon.com/html/download/sf220.html>). Before you can download the update file you will be prompted to input the 17 digit alphanumeric Product Key located on the underside label of the ScanFront. When entering the Product Key be sure to use upper case for any alpha characters in the key. Once the file is downloaded the device can be updated using the same ScanFront Administrator Mode Web Menu that is used for configuration and day to day management of the device. The following are the procedures for applying these software updates.

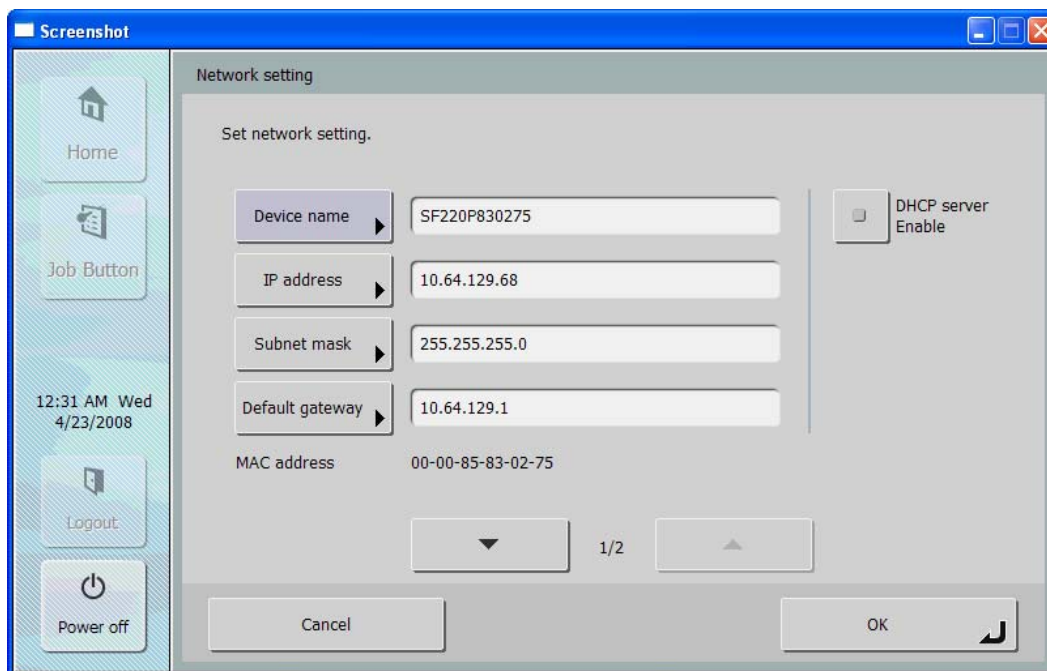
The configured settings of the device should be backed up before performing a system software update. Applying new system software will not erase configuration settings such as user accounts, address book entries, job buttons, etc., but it is always advised to perform a device backup before performing any software update. With that in mind this document starts with instructions for backing up the configured settings on the ScanFront in the event those settings need to be restored after the system software has been updated.

Canon ScanFront 220/220P System Software Update

Instructions

ScanFront 220/220P Configuration Backup Procedure*

1. The IP address assigned to the ScanFront can be obtained at the device by clicking on the Administrator Settings button on the main menu screen. You will need to enter the administrator password if one has been assigned, and then click on the Network Setting button. This will display the IP address, which is needed to connect to the ScanFront 220 Administration Mode Web Menu using a browser on any computer attached to the network;

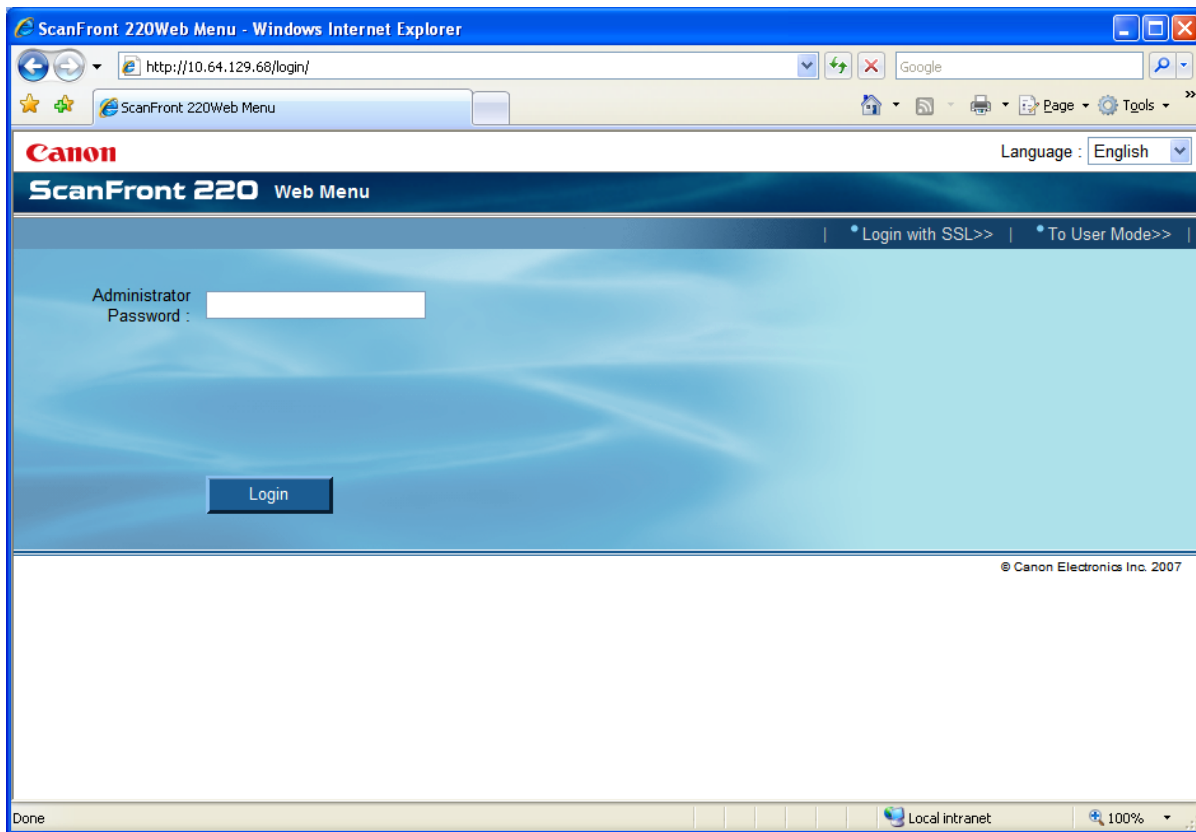


* The Backup/Restore operation can also be performed at the ScanFront device. For more information please refer to the detailed instructions on page 3-10 in Chapter 3 "ScanFront Setup" of the ScanFront 220/220P Instruction manual.

Canon ScanFront 220/220P System Software Update

Instructions

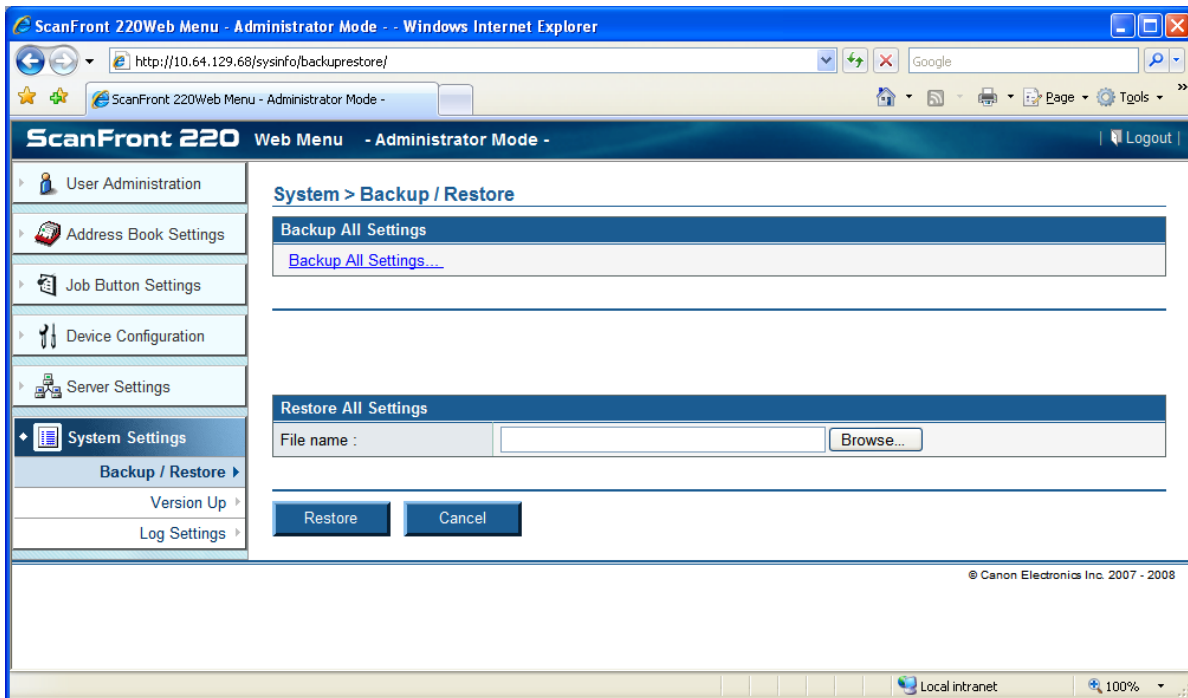
2. Once the IP address is obtained, launch an Internet Explorer session on a network attached computer. Type the ScanFront IP address into the Internet Explorer address bar and then click enter. You will be presented with the ScanFront 220 Web Menu login screen for the device. Make sure the login screen is in Administrator Mode and not in User Mode. Switching to Administrator Mode from User Mode can be done by clicking the To Administrator Mode>> link in the upper right hand corner of the login page. If the upper right hand corner link says To User Mode>> you are at the Administrator Mode login page already. At that point you should enter the administrator password, and then click the Login button;



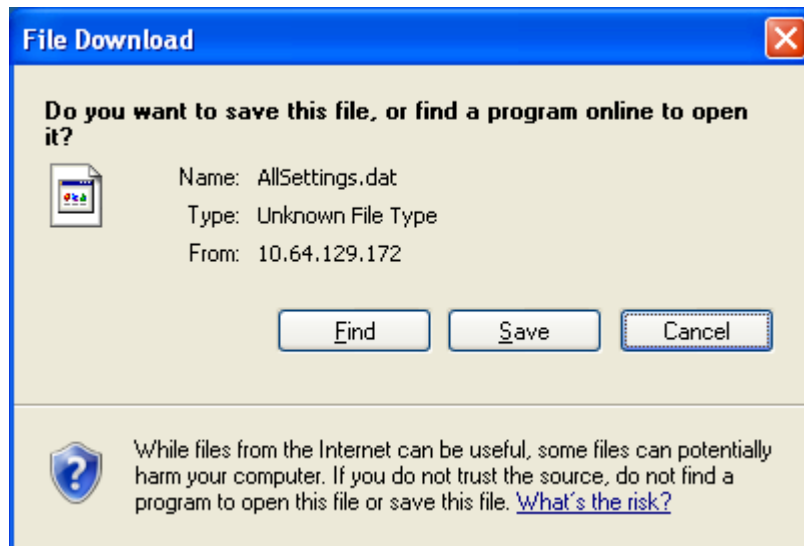
Canon ScanFront 220/220P System Software Update

Instructions

3. After logging in to the ScanFront Administrator Web Menu, click on the System Settings menu item on the left side of the screen. Then click on the Backup/Restore sub menu item;



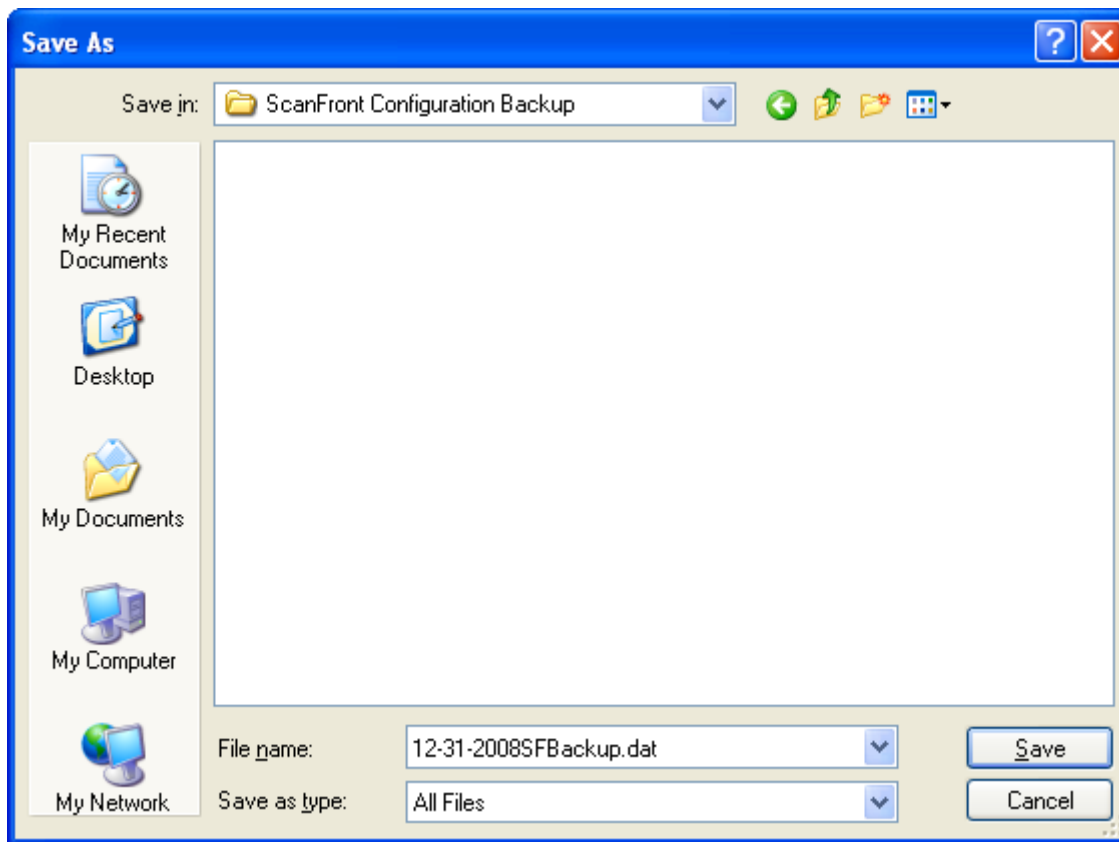
4. Click on the Backup All Settings... link. This will bring up the following dialog box prompting you to Open or Save the file. You should choose the Save option;



Canon ScanFront 220/220P System Software Update

Instructions

5. After clicking on the Save option you will be presented with a Save As dialog box where you can specify a location and file name for the backup file;

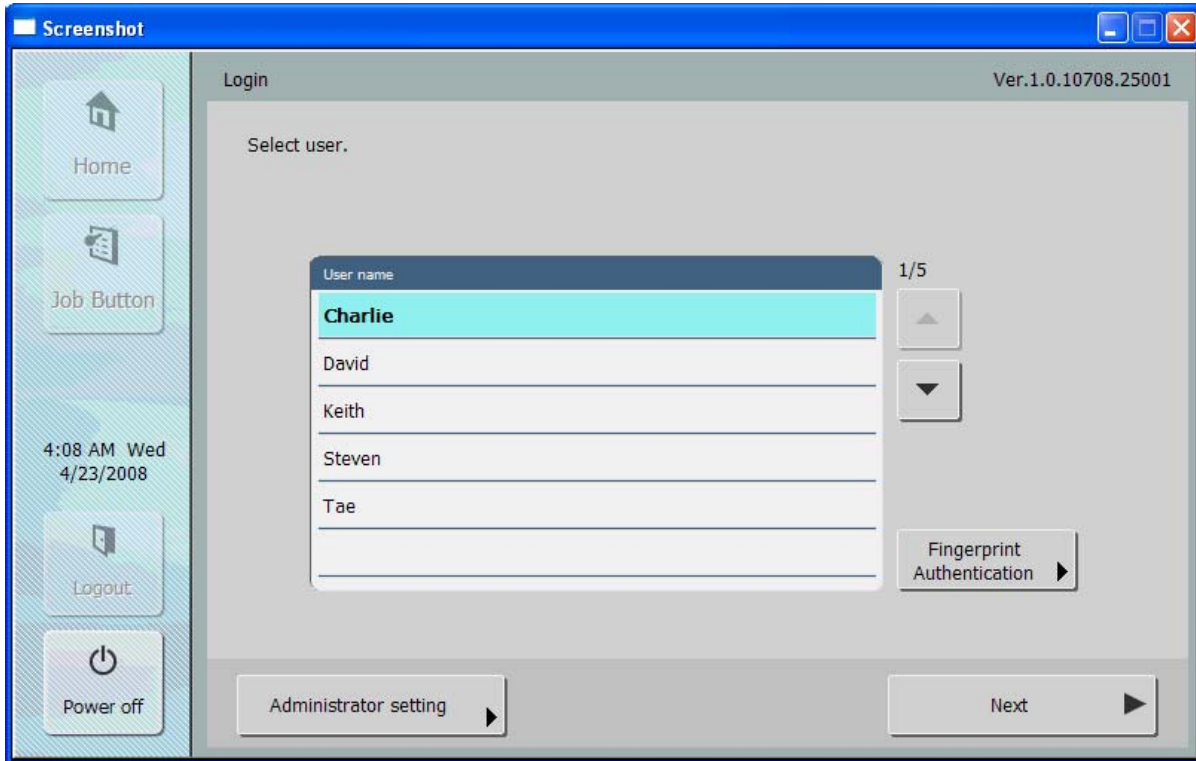


You now have a file saved to your hard drive containing the ScanFront configured settings. In the future this file can be applied to the device to restore the settings that existed at the time the backup was made.

Canon ScanFront 220/220P System Software Update Instructions

ScanFront 220/220P Software Version Update Procedure

1. Before beginning you should make a note of the current version number displayed in the upper right hand corner of ScanFront login screen. This can be compared with the version displayed after applying the update to verify the update was successful.

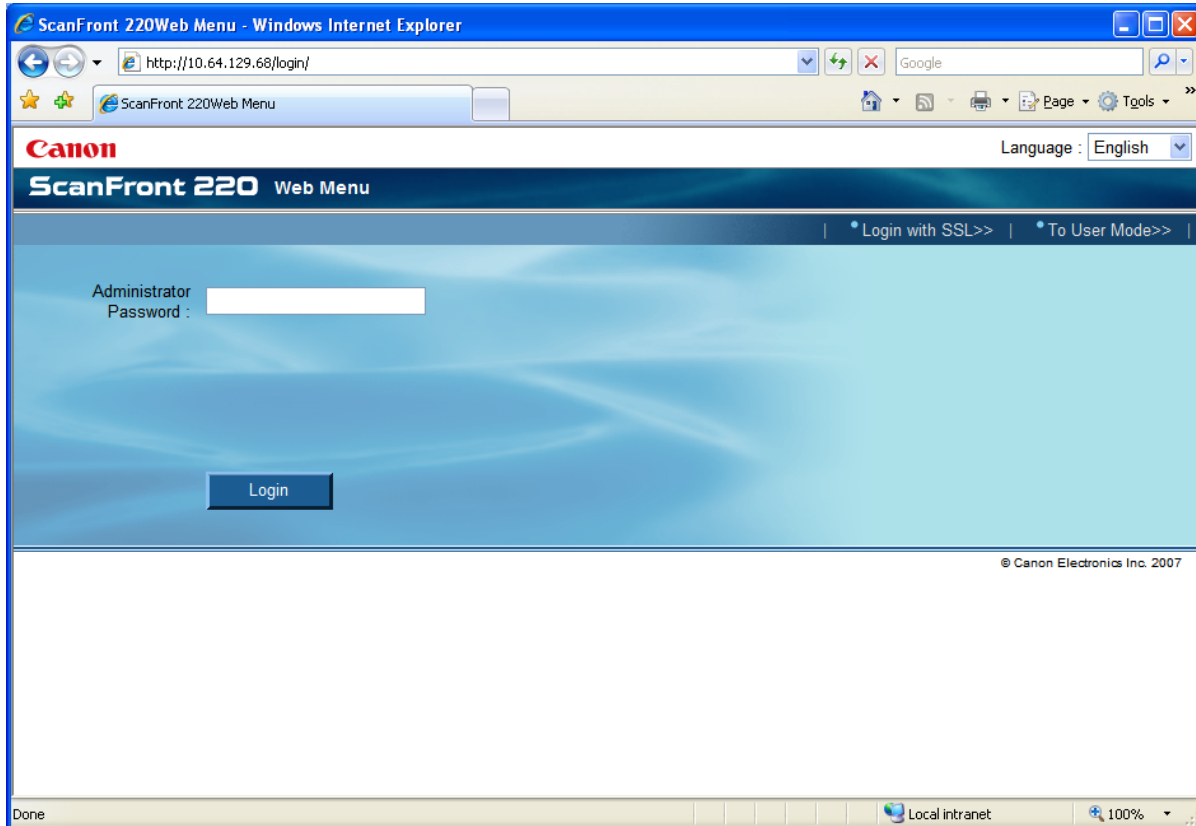


You should also make sure that if you are using a laptop it is powered by the AC line. Power cords to both the computer and ScanFront should be secure and fully inserted so that both the computer and ScanFront don't lose power during the upgrade process.

Canon ScanFront 220/220P System Software Update

Instructions

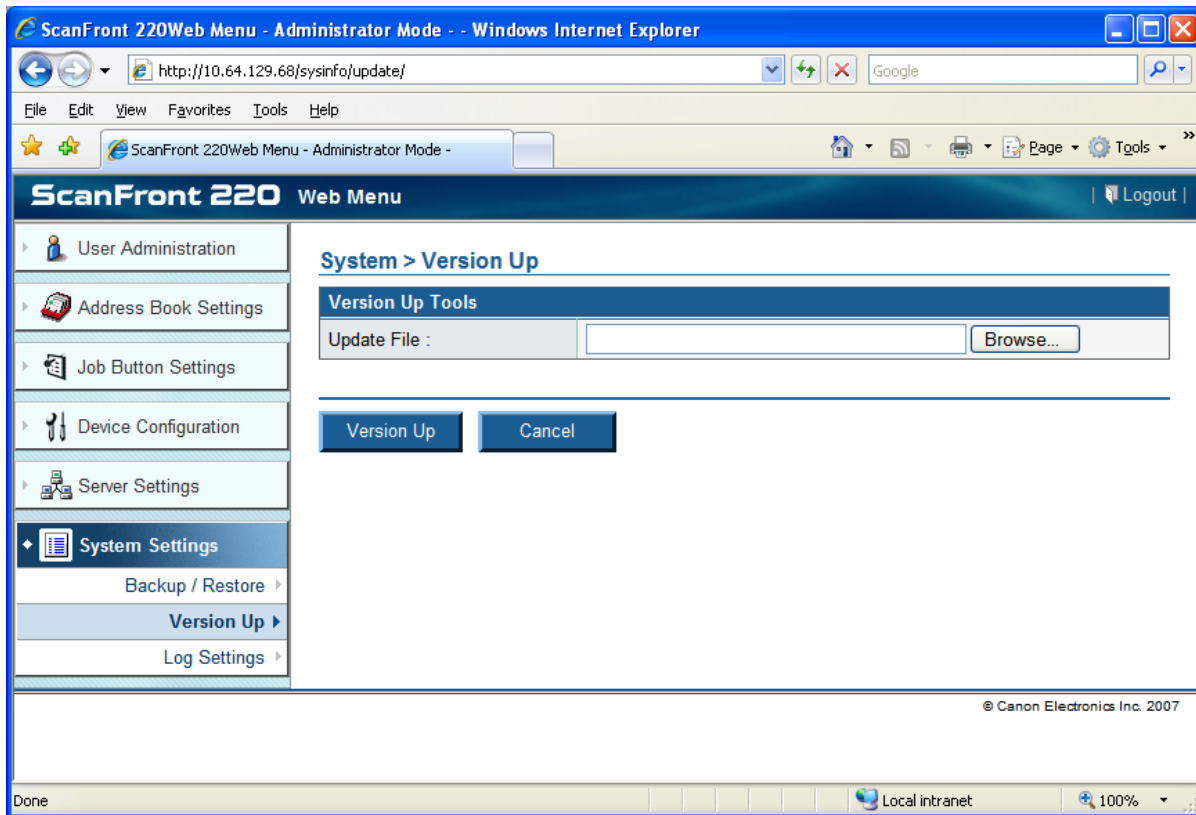
2. Launch an Internet Explorer session on a network attached computer, type the ScanFront IP address into the Internet Explorer address bar, and then click enter. You will be presented with the ScanFront 220 Web Menu login screen for the device. Make sure the login screen is in Administrator Mode and not in User Mode. Switching to Administrator Mode from User Mode can be done by clicking the To Administrator Mode>> link in the upper right hand corner of the login page. If the upper right hand corner link says To User Mode>> you are at the Administrator Mode login page already. At that point you should enter the administrator password, and then click the Login button;



Canon ScanFront 220/220P System Software Update

Instructions

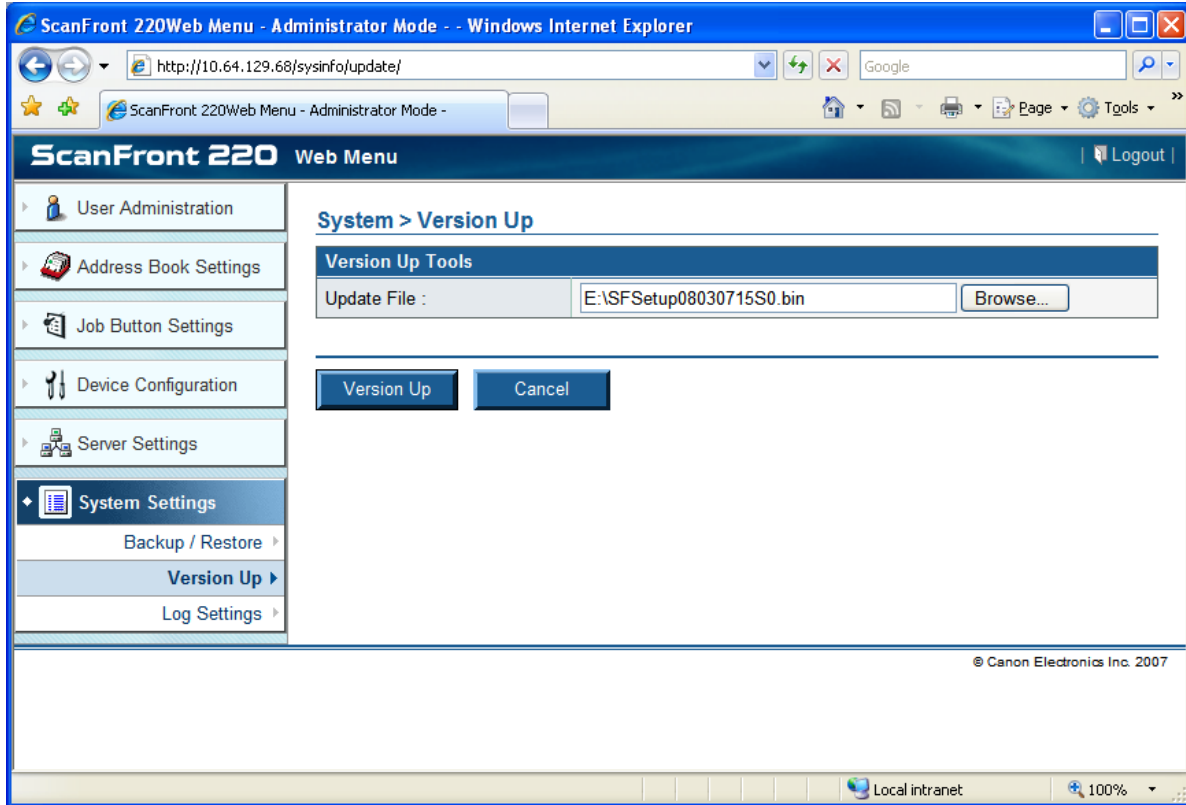
3. Once logged into the ScanFront Web Menu, click on the System Settings menu item on the left side of the screen, then click on the Version Up sub menu item;



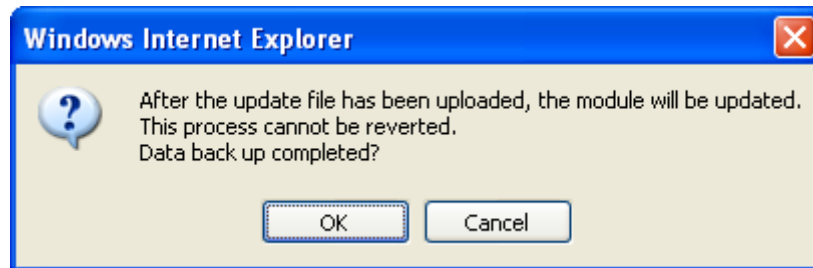
Canon ScanFront 220/220P System Software Update

Instructions

4. Click the Browse button to navigate to the downloaded ScanFront system upgrade .bin file. Once the update file path location is selected, click on the Version Up button to start transferring the file to the ScanFront;



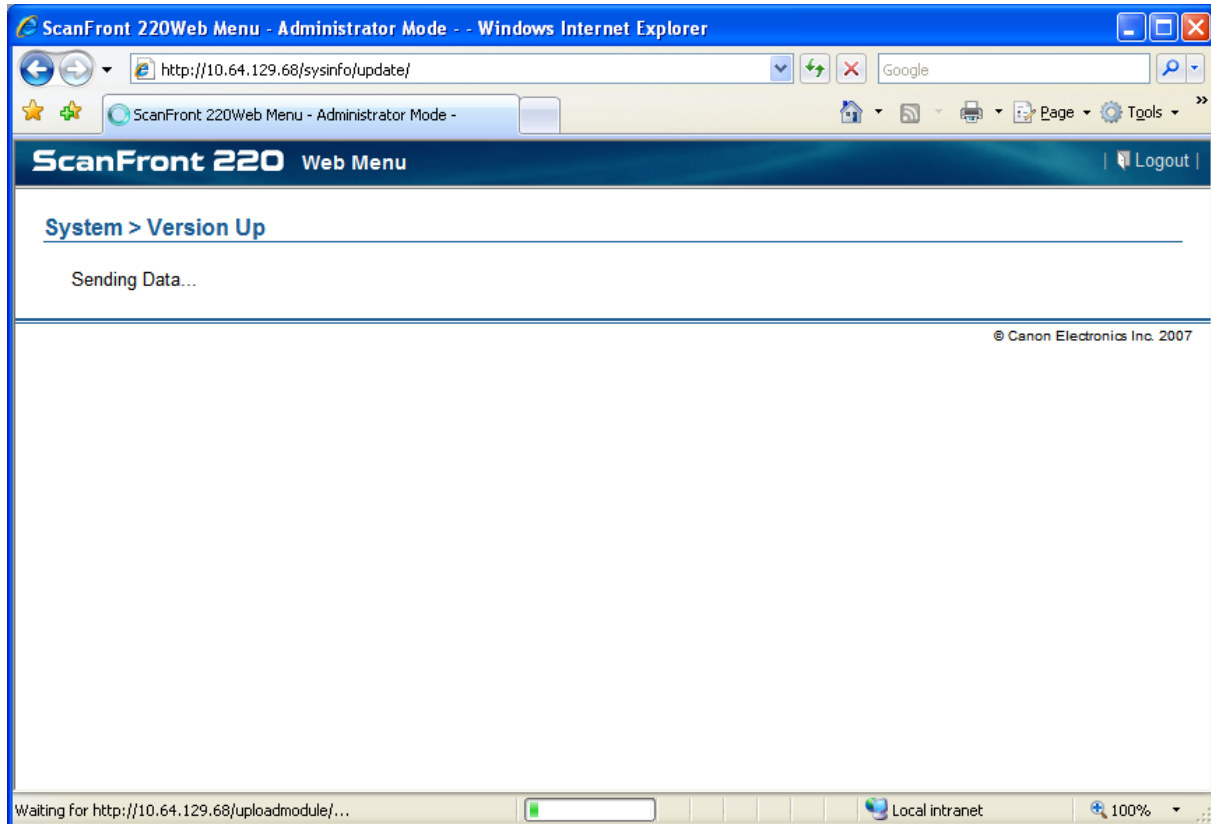
5. You will be prompted with a dialog box warning that once the file has been uploaded the ScanFront will be updated and the process cannot be reverted. Click the OK button to start the update process;



Canon ScanFront 220/220P System Software Update

Instructions

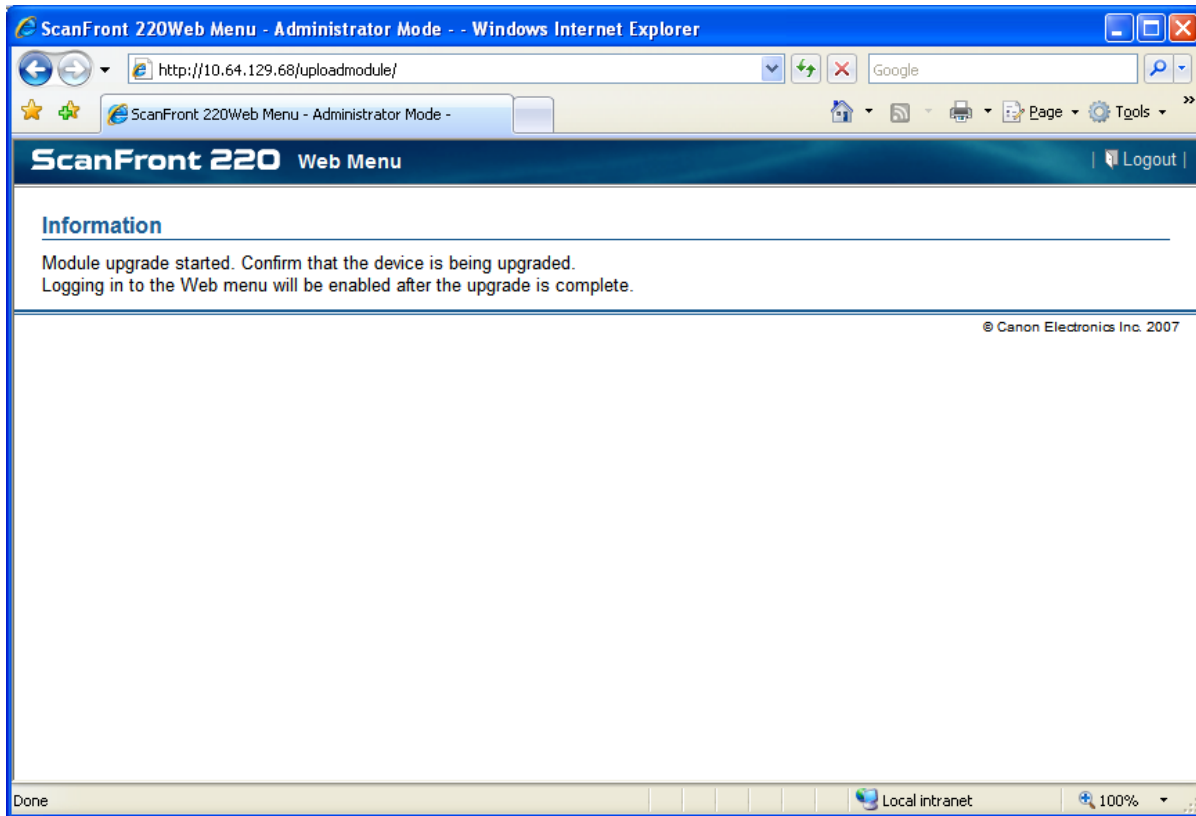
6. It will take several minutes or more depending on the bandwidth of your network for the update file to be uploaded to the ScanFront. During this time you will see the following screen. A progress indicator will display the transfer status in the lower part of the Internet Explorer window;



Canon ScanFront 220/220P System Software Update

Instructions

7. Once the transfer has completed the following screen will display. At this time the device is applying the update file, which will take several minutes to complete. The touch screen display on the ScanFront device will display various messages indicating updating is in progress;



8. Do not turn the power off or attempt to operate the scanner while the update is in progress. Once completed the ScanFront will reboot and display the standard logon screen. At that point it is safe to login to the ScanFront and immediately start using it. You can check the version number in the top right area of the ScanFront touch screen to confirm the version number has changed.

Free Manuals Download Website

<http://myh66.com>

<http://usermanuals.us>

<http://www.somanuals.com>

<http://www.4manuals.cc>

<http://www.manual-lib.com>

<http://www.404manual.com>

<http://www.luxmanual.com>

<http://aubethermostatmanual.com>

Golf course search by state

<http://golfingnear.com>

Email search by domain

<http://emailbydomain.com>

Auto manuals search

<http://auto.somanuals.com>

TV manuals search

<http://tv.somanuals.com>