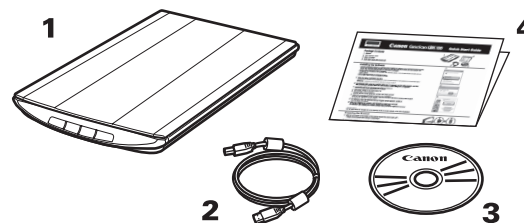




Package Contents

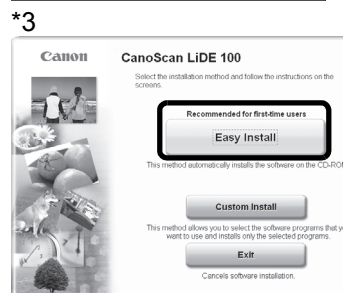
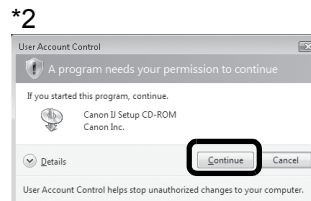
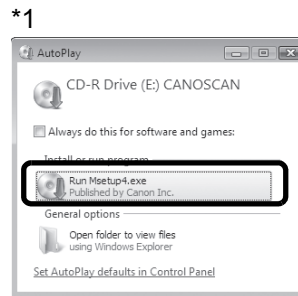
- 1 Scanner
- 2 USB Interface Cable
- 3 Setup CD-ROM
- 4 Quick Start Guide (this document)



Installing the Software

- Do NOT connect the scanner to a computer before installing the software. If you connect the scanner and the Found New Hardware screen appears, unplug the USB cable from the computer and click [Cancel]. The screen may close automatically when the USB cable is unplugged.
- Quit all running applications before installation.
- To upgrade from Windows XP to Windows Vista operating system, first uninstall software bundled with the Canon scanner.
- Log in as an administrator to install the software.
- Do not switch users during the installation process.

- 1 Place the Setup CD-ROM in the drive.
For Macintosh: Double-click the [Setup] icon. Enter the administrator ID and password on the authentication dialog box.
For Windows 2000/XP and Macintosh, skip step 2 and go to step 3.
- 2 For Windows Vista, when the AutoPlay dialog box (*1) appears, run the setup program, and then click [Continue] to proceed when the User Account Control dialog box (*2) appears.
- 3 If prompted, select your language and place of residence.
In some countries, these dialog boxes will not appear.
- 4 Click [Easy Install] on the main menu (*3).
- 5 Click [Install] to start installation.
Carefully read the License Agreement, and then click [Yes] to proceed.
- 6 Follow the on-screen instructions to perform the installation.
When the User Registration screen appears, follow the on-screen instructions to ensure product support.
For Macintosh, skip step 7 and go to step 8.
- 7 For Windows, when the Extended Survey Program screen appears, confirm it.
If you can agree, click [Agree].
- 8 When the installation is complete, click [Restart] to restart your computer.
For Windows: After restarting the computer, Solution Menu will appear.
For Macintosh: After restarting the computer, [Solution Menu] icon will be registered in the Dock.

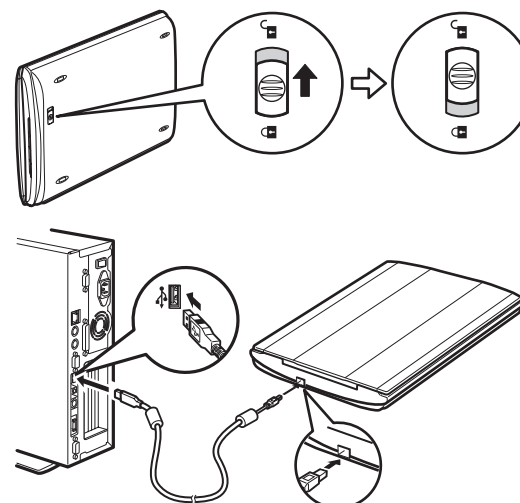


<Solution Menu>

You can select either MP Navigator EX or the Scanning Guide (on-screen manual), or the Online Registration.

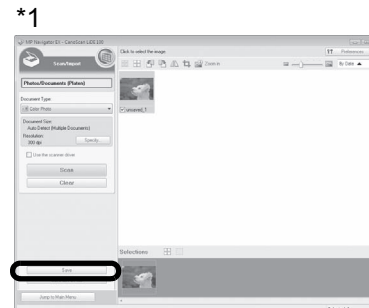
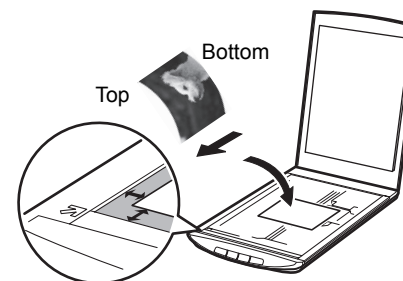
Preparing the Scanner

- 1 Slide the lock switch on the bottom of the scanner toward the unlock mark (🔓).
• Always lock the scanner when carrying or transporting it.
- 2 Connect the scanner to the computer with the supplied USB cable.
• Only use the USB cable provided with the scanner. Use of other cables may lead to a malfunction.
• Do not touch the metallic parts of the USB connector.
• The scanner does not have a power switch. The power is activated as soon as the computer is turned on.
• When the scanner is connected to the USB 1.1 port and "HI-SPEED USB Device Plugged into non-HI-SPEED USB Hub" message appears, ignore the message.
The scanner operates in this condition without problems.



Try Scanning

- 1 Place a color photo document with the side to be scanned facing down on the document glass at least 0.4 in. (1 cm) away from the edges of the document glass, and then close the document cover.
- 2 Start MP Navigator EX.
For Windows: Double-click the [Canon Solution Menu] icon, then click [Scan/import photos or documents].
For Macintosh: Click the [Solution Menu] icon in the Dock, then click [Scan/import photos or documents].
- 3 Click [Photos/Documents (Platen)].
- 4 Select [Color Photo] in "Document Type".
- 5 Click [Scan] to start scanning.
• Do not move the scanner while it is operating.
• Do not see the light source directly during a scan job.
- 6 When prompted that the scanning completed, click [Exit].
- 7 Click [Save] to save the images and close MP Navigator EX (*1).



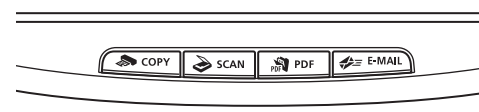
Using the Scanner Buttons

COPY Button
Prints (copies) the scanned image with a printer.

SCAN Button
Discriminates the document type automatically, then scans and saves it with appropriate settings.

PDF Button
Saves the scanned image as a PDF file.

E-MAIL Button
Attaches the scanned image to a new e-mail message.



- For Mac OS X v.10.3.9: Refer to Other Scanning Methods in the Scanning Guide (on-screen manual) before using.

Refer to the Scanning Guide (on-screen manual) for further information about ScanGear, MP Navigator EX, Scanner Buttons, and Troubleshooting. To start the Scanning Guide (on-screen manual), double-click the on-screen manual icon on the desktop.
In this guide, Windows Vista screen shots are used to illustrate explanations common to all operating systems.

Specifications

		CanoScan LiDE 100
Scanner Type		Flatbed
Sensor Type		CIS (Color Contact Image Sensor)
Light Source		3-color (RGB) LED
Optical Resolution ^{*1}		2400 x 4800 dpi
Selectable Resolution		25-19200 dpi (ScanGear)
Scanning Bit Depth	Color	48 bit input (16bit input for each color (RGB)) 48 bit or 24 bit output (16bit or 8bit output for each color (RGB))
	Grayscale	16 bit input /8 bit output
Scanning Speed ^{*2} (Photo or Document)	Color	5.5 msec./line (300 dpi), 4.6 msec./line (600 dpi), 8.7 msec./line (1200 dpi), 16.9 msec./line (2400 dpi)
	Grayscale, B&W	3.7 msec./line (300 dpi), 1.8 msec./line (600 dpi), 2.9 msec./line (1200 dpi), 5.6 msec./line (2400 dpi)
Interface		Hi-Speed USB ^{*2}
Maximum Document Size		A4/Letter: 216 x 297 mm
Scanner Buttons		4 buttons (COPY, SCAN, PDF, E-MAIL)
Operating Range	Temperature	5°C to 35°C (41°F to 95°F)
	Humidity	10% to 90% RH without condensation formation
Power Requirements		Supplied via USB port (No external adapter required)
Power Consumption		In operation: 2.5 watts maximum, Stand-by: 1.4 watts, Suspend: 11 mwatts
Exterior Dimensions (W) x (D) x (H)		250 x 370 x 40 mm (9.9 x 14.6 x 1.6 in.)
Weight		Approximately 1.6 kg (3.5 lbs.)

^{*1} Optical Resolution represents the maximum sampling rate based on ISO 14473.

^{*2} The fastest speed in Hi-Speed USB mode on Windows PC. Transfer time is not included. Scanning speed varies according to the document types, scan settings, or specifications of the computer.

• Specifications are subject to change without notice.

Model Name: K10317 (CanoScan LiDE 100)

FCC Notice (U.S.A. Only)

Model Number : K10317

This device complies with Part 15 of the FCC Rules. Operation is subject to the following two conditions: (1) This device may not cause harmful interference, and (2) this device must accept any interference received, including interference that may cause undesired operation.

Note: This equipment has been tested and found to comply with the limits for a Class B digital device, pursuant to Part 15 of the FCC Rules. These limits are designed to provide reasonable protection against harmful interference in a residential installation. This equipment generates, uses and can radiate radio frequency energy and, if not installed and used in accordance with the instructions, may cause harmful interference to radio communications. However, there is no guarantee that interference will not occur in a particular installation. If this equipment does cause harmful interference to radio or television reception, which can be determined by turning the equipment off and on, the user is encouraged to try to correct the interference by one or more of the following measures:

- Reorient or relocate the receiving antenna.
- Increase the separation between the equipment and receiver.
- Connect the equipment into an outlet on a circuit different from that to which the receiver is connected.
- Consult the dealer or an experienced radio/TV technician for help.

Use of a shielded cable is required to comply with Class B limits in Subpart B of Part 15 of the FCC Rules.

Do not make any changes or modifications to the equipment unless otherwise specified in the manual. If such changes or modifications should be made, you could be required to stop operation of the equipment.

Canon U.S.A., Inc.
One Canon Plaza
Lake Success, NY 11042
1-516-328-5600



As an ENERGY STAR[®] Partner, Canon Inc. has determined that this product meets the ENERGY STAR[®] guidelines for energy efficiency.

Warning

When you use this product, you should pay attention to the following legal issues:

- Scanning of certain documents, such as bank notes (bank bills), government bonds and public certificates, may be prohibited by law and may result in criminal and/or civil liability.
 - You may be required under law to obtain authorization from a person possessing copyrights or other legal rights to the item being scanned.
- If you are uncertain of the legality of scanning any particular item, you should consult your legal adviser in advance.

- Microsoft is a registered trademark of Microsoft Corporation.
- Windows is a trademark or registered trademark of Microsoft Corporation in the U.S. and/or other countries.
- Windows Vista is a trademark or registered trademark of Microsoft Corporation in the U.S. and/or other countries.
- Macintosh and Mac are trademarks of Apple Inc., registered in the U.S. and other countries.
- Adobe, Adobe RGB and Adobe RGB (1998) are either registered trademarks or trademarks of Adobe Systems Incorporated in the United States and or other countries.
- ©ArcSoft, Inc. All rights reserved for PhotoStudio.
- Other names and products not mentioned above may be registered trademarks or trademarks of their respective companies.

Free Manuals Download Website

<http://myh66.com>

<http://usermanuals.us>

<http://www.somanuals.com>

<http://www.4manuals.cc>

<http://www.manual-lib.com>

<http://www.404manual.com>

<http://www.luxmanual.com>

<http://aubethermostatmanual.com>

Golf course search by state

<http://golfingnear.com>

Email search by domain

<http://emailbydomain.com>

Auto manuals search

<http://auto.somanuals.com>

TV manuals search

<http://tv.somanuals.com>