



The Complete Product Lineup

TOTAL IMAGING SOLUTIONS



DR-1210C

DR-2050C / DR-2050SP

DR-2580C

DR-3080CII

DR-4010C

DR-5010C

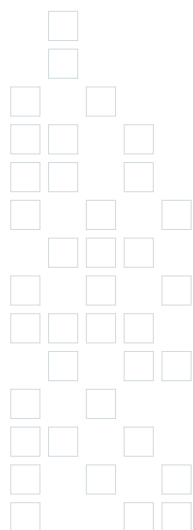
DR-7080C

DR-9080C / DR-7580

CR-55

CR-180

CD-4070NW



IMAGING SOLUTIONS FOR EASY AND EFFICIENT DOCUMENT MANAGEMENT

Capture, manage, and distribute information with greater speed, ease, and efficiency than ever with a high-performance document scanning solution from Canon. Our diverse lineup offers a vast range of models and options to fit your specific needs.

DOCUMENT SCANNERS



DR-1210C [» see p.5](#)

Color Document Scanner with Flatbed

- B&W / Grayscale / Color ■ Simplex
- 35-sheet capacity ADF
- Up to 600 dpi resolution
- Accepts documents up to 216 x 356 mm (8.5 x 14 in.)
- 12 ppm



DR-2050C [» see p.6](#)

Compact Color Document Scanner

- B&W / Grayscale / Color ■ Simplex / Duplex
- 50-sheet capacity ADF
- Up to 600 dpi resolution
- Accepts documents up to 216 x 355 mm (8.5 x 13.9 in.), plus Folio mode
- 20 ppm



DR-2050SP [» see p.6](#)

Compact Color Document Scanner with "Scan to Projector" Functionality

- The same document scanning features as the DR-2050C, plus Presentation Mode
- Use with any standard data projector, no PC required
- Scan and project documents; display images from USB memory or infrared-equipped mobile devices
- Up to SXGA output resolution
- Wireless remote control

CHECK SCANNERS

CR-55 [» see p.13](#)

Front-Office Check Scanner

- B&W / Grayscale / Color
- Simplex / Duplex
- 50-sheet capacity ADF
- Up to 300 dpi resolution
- Accepts checks up to 228 x 106 mm (9.0 x 4.2 in.)
- 55 cpm



DR-2580C [» see p.7](#)

Compact Color Document Scanner with Optional Flatbed

- B&W / Grayscale / Color ■ Simplex / Duplex
- 50-sheet capacity ADF
- Up to 600 dpi resolution
- Accepts documents up to 216 x 355.5 mm (8.5 x 13.9 in.), plus Folio and Long Document modes
- 25 ppm



DR-7080C [» see p.11](#)

Color Production Scanner with Flatbed

- B&W / Grayscale / Color
- Simplex / Duplex
- 100-sheet capacity ADF
- Up to 600 dpi resolution
- Accepts documents up to 305 x 432 mm (12 x 17 in.), plus Long Document mode
- 70 ppm



DR-3080CII [» see p.8](#)

Color Document Scanner

- B&W / Grayscale / Color
- Simplex / Duplex
- 100-sheet capacity ADF
- Up to 300 dpi resolution
- Accepts documents up to 257 x 364 mm (10.1 x 14.3 in.), plus Folio mode
- 30 ppm



DR-7580 [» see p.12](#)

High-Volume Production Scanner

- B&W / Grayscale ■ Simplex / Duplex
- 500-sheet capacity ADF
- Up to 600 dpi resolution
- Accepts documents up to 305 x 432 mm (12 x 17 in.), plus Long Document mode
- 75 ppm



DR-4010C [» see p.9](#)

Color Document Scanner

- B&W / Grayscale / Color ■ Simplex / Duplex
- 100-sheet capacity ADF
- Up to 600 dpi resolution
- Accepts documents up to 219 x 356 mm (8.6 x 14 in.), plus Folio mode and Long Document Mode
- 42 ppm



DR-9080C [» see p.12](#)

High-Volume Color Production Scanner

- B&W / Grayscale / Color
- Simplex / Duplex
- 500-sheet capacity ADF
- Up to 600 dpi resolution
- Accepts documents up to 305 x 432 mm (12 x 17 in.), plus Long Document mode
- 90 ppm



DR-5010C [» see p.10](#)

Color Production Scanner

- B&W / Grayscale / Color
- Simplex / Duplex
- 100-sheet capacity ADF
- Up to 600 dpi resolution
- Accepts documents up to 300 x 432 mm (11.8 x 17 in.), plus Folio mode and Long Document Mode
- 50 ppm



All DR-series document scanners come bundled with CapturePerfect, a full-featured scanning application brought to you by Canon.

Capture Perfect



CR-180 [» see p.13](#)

Back-Office Check Scanner

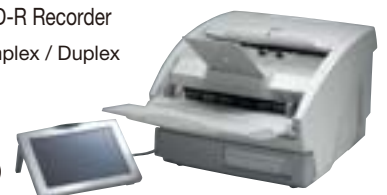
- B&W / Grayscale ■ Simplex / Duplex
- 200-sheet capacity ADF
- Up to 240 dpi resolution
- Accepts checks up to 240 x 118 mm (9.1 x 4.6 in.)
- 180 cpm



CD-4070NW [» see p.14](#)

Color Document Scanner with CD-R Recorder

- B&W / Grayscale / Color ■ Simplex / Duplex
- 100-sheet capacity ADF
- Up to 300 dpi resolution
- Accepts documents up to 257 x 364 mm (10.1 x 14.3 in.)
- Network scanning functions
- 42 ppm



SUPERIOR SCANNER TECHNOLOGY

Built upon a tradition of superior image quality and reliability, Canon document scanners feature state-of-the-art scanning technology. The following features are available in most Canon DR-Series document scanner models.

HIGH-PERFORMANCE SCANNING

High-speed scanning

With fast throughput, efficient paper handling, and intuitive image processing functions, Canon document scanners help you manage your documents in record speed.

Built-in ADF

A high-capacity automatic document feeder allows for fast, unattended scanning of batches of documents.

Reliable paper feeding

Canon's revolutionary feeding mechanism with retard roller achieves highly reliable page separation, while preventing problems due to partial double feeding or dust damage.

Simultaneous double-sided scanning

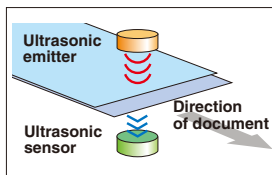
Scan double-sided pages just as quickly as single-sided pages. Each scanner is equipped with dual sensor units to capture both sides of a page in one pass.

Except DR-1210C. Duplex scanning is not simultaneous with DR-7080C.

Ultrasonic Double Feed Detection

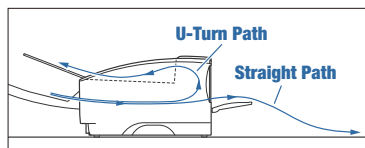
Ultrasonic sensors detect the gap between overlapping pages and prevent multiple pages from being fed together, reliably ensuring that each page of a document is scanned.

Available in DR-2580C/4010C/5010C/7580/9080C.



U-turn / Straight Path Feeding

For enhanced efficiency and flexible scanning of a range of document types, including plastic cards and thick documents, select scanner models feature a straight paper path in addition to the standard U-Turn path.



DR-5010C pictured here.

Available in DR-2580C/4010C/5010C.

IMAGE PROCESSING TECHNOLOGY

Automatic Color Detection

This function automatically determines which documents of a mixed batch should be scanned in color, so it's no longer necessary to separate black & white and color documents prior to scanning. Available in DR-4010C.

Auto Page Size Detection

Save the time and trouble of sorting batches by paper size. This function automatically checks the size of each fed document and ensures properly sized images for each page.

Deskew

If a document is fed into the scanner at an angle, this function automatically straightens out the scanned image.

Text Orientation Recognition

Perfect for scanning batches of documents that are facing different directions, this feature recognizes the text orientation of each fed document and rotates the scanned images accordingly.

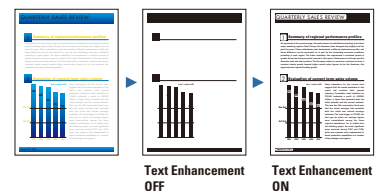
Available in DR-2580C/4010C/5010C/7080C/7580/9080C.

Skip Blank Page

Useful for scanning batches that include single- and double-sided documents, this feature automatically removes unnecessary blank pages from the image file.

Text Enhancement

For clearer, more legible images from documents with hard-to-scan elements such as light text or handwriting.



Color Dropout

Red, green, or blue can be removed from document images for improved readability in OCR applications. Additionally, a range of specified colors can be dropped out with the DR-4010C and DR-5010C. DR-7580, red only.

HIGH-QUALITY IMAGES

Advanced CMOS contact image sensor

Capture fine lines and intricate image detail thanks to Canon's advanced CMOS contact image sensor technology. In addition to providing superior image output, CMOS technology also cuts energy consumption and eliminates warm-up time.

All models, excluding DR-1210C, DR-7080C, and the flatbed option of DR-2580C, which feature CCD technology.

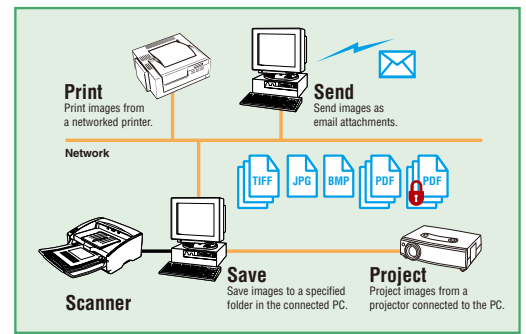
3-Dimensional Color Correction

For unprecedented color reproduction and accuracy, 3-Dimensional Color Correction faithfully reproduces a document's color information using a built-in conversion circuit to pinpoint exact RGB color coordinates. The end result is superior color quality, plus enhanced readability for OCR scanning applications.

Available in DR-4010C, DR-5010C, and DR-2580C, which features a 3-D Color Correction algorithm.

CAPTUREPERFECT SCANNING APPLICATION Capture Perfect

CapturePerfect is a powerful, yet easy-to-use image capture application that gives you total control of scanning from start to finish. A productivity-enhancing interface between the scanner and connected PC, CapturePerfect provides an array of tools to help you make the most of your scanner's performance. Adjust image quality and scan mode settings. Verify scanned documents. And distribute or save images in a choice of outputs. CapturePerfect offers the following handy functions to ensure high-quality image capture and efficient document management.



SCAN AND VIEW

Convenient display options: View scanned images with ease, thanks to convenient multiple-image display options such as Thumbnail View Multi Window.

Easy file editing:

CapturePerfect gives you the control to create multiple-page files and change the order of pages with drag-and-drop simplicity.

SCAN AND PROJECT / SEND / PRINT

Scan to Presentation: Scan a single document—or a full stack—for direct projection of images by a projector connected to your PC. Images are displayed full-screen and can be controlled in a slideshow-like presentation using keyboard shortcuts.

Scan to Email: In one seamless operation, scanned images are automatically attached to a new email message.

Scan to Print: Scanned images are sent directly to a networked printer so you can make hard copies of documents.

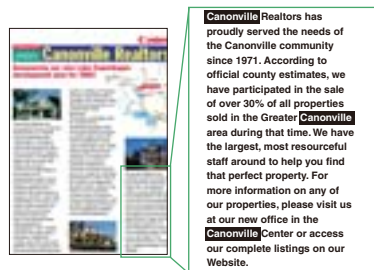
SCAN AND SAVE

Versatile image saving formats: Save scanned images as TIFF*, JPEG, BMP, or PDF* files with a specified name. CapturePerfect can also generate High Compression PDFs with smaller file sizes by applying different compression schemes for the contained graphics and text. *Single- or multiple-page

PDF Encryption: Save scanned images as password-protected PDF files to keep your valuable data safe. This security feature lets you control access privileges for viewing, printing, and editing scanned images.

Searchable PDF files:

Built-in OCR processing lets you embed text to PDF files so you can later search document content by keyword. As a result, specific documents can be quickly retrieved without the need to open and view each file. OCR-embedded text data can also be copied into other documents.



File-naming schema: For fast scanning and archiving of large batches of documents, the Schema setting automates file-naming based on specified parameters.

MultiStream™: Simultaneously create two files from a single scan. Useful, for example, when you want to save a color image for archiving and a black and white image for OCR processing. (Available for DR-4010C/5010C/7080C/9080C only.)



Color image



B&W image

Custom software solutions with CapturePerfect SDK

CapturePerfect SDK (Software Development Kit) is a set of tools that allows developers to integrate Canon DR scanner control into custom software applications via the CapturePerfect platform. The SDK is highly cost effective, easy to use, and provides great flexibility for integrating Canon DR scanners into existing business processes.

- Easy integration of all DR scanner functions using minimal command sets
- Quick development cycle—doesn't require specialized knowledge of complex scanner controls
- Once an API is developed, the host application is compatible with all current and future DR models

Contact your local authorized Canon representative for more information about CapturePerfect SDK



DR-1210C *Versatile, easy-to-use color scanner with both ADF and flatbed*



- **Stylish, space saving design**
- **ADF for fast 12 ppm batch scanning—up to 30 sheets at a time (A4, simplex, 300 dpi)**
- **Built-in flatbed for books, passports, thick or thin documents, business cards and more**
- **Copier-like front-panel operation; programmable job buttons for one-touch scanning**
- **Bundled with CapturePerfect, and Adobe® Acrobat® Standard, OmniPage SE, Presto! BizCard Reader**



Type	Desktop ADF (Automatic Document Feeder) / flatbed scanner
Document feeding	Automatic sheet feeding / flatbed
Document size*1	Width: 148 - 216 mm (5.8 - 8.5 in.) Length: 100 - 356 mm (3.9 - 14.0 in.)
Document thickness and weight*1	0.06 - 0.15 mm, 52 - 128 g/m ²
Feeding capacity*1	Approx. 35 sheets or less (A4/LTR)
Scanning element	3-line CCD
Light source	CCFL (Cold-Cathode Fluorescent Lamp)
Scanning modes	ADF (front side only) / Flatbed Black and White, Error Diffusion, Advanced Text Enhancement Grayscale (8-bit) Color (24-bit) Resolution: 100 x 100 dpi • 150 x 150 dpi • 200 x 200 dpi • 240 x 240 dpi 300 x 300 dpi • 400 x 400 dpi • 600 x 600 dpi
Scanning speed	Black and White: 12 ppm (Flatbed: approx. 12 seconds.) (A4/LTR, Portrait, 300 dpi) 256-level Grayscale: 12 ppm, with JPEG compression 24-bit Color: 12 ppm, with JPEG compression
Interface	Hi-Speed USB 2.0
Scanner driver	ISIS/TWAIN
Application software	CapturePerfect, Adobe Acrobat, OmniPage SE, Presto! BizCard Reader
Useful functions	Punch Hole Removal, Automatic Page Size Detection, Color Dropout, Text Orientation Recognition, Deskew, Border Removal, Gamma Compensation, Prescan
Power requirements	AC100 - 120V (50/60Hz) AC200 - 240V (50/60Hz)
Power consumption*2	18W maximum power, 5W (100 - 120V) / 5.5W (200 - 220V) in Low Power Mode, 0.5W (100 - 120V) / 0.75W (200 - 220V) with Power Switch OFF
Operating environment	10 - 32.5°C (50 - 90.5°F), Humidity: 20 - 80% RH
Dimensions (W x D x H)	With paper guide closed: 471 x 380 x 165 mm (18.5 x 15.0 x 6.5 in.)
Weight	Approx. 6.1 kg (13.5 lb.)
Options / Consumables	Please refer to the back cover of this brochure.

*1 When scanning documents using ADF.

*2 Conforms to ENERGY STAR standards for energy efficiency.
Specifications are subject to change without notice.

For more information on the DR-1210C, please ask your local authorized Canon representative for the individual product brochure.



DR-2050C *Space-saving, ultra-compact model with duplex and color capabilities*



- Streamlined, upright body with a compact footprint
- Fast scanning speeds - 20 ppm simplex and 38 ipm duplex (A4/LTR, B&W, 200 dpi)
- Scan batches of up to 50 sheets at a time
- Superb image quality at up to 600 dpi
- Folio function to scan larger-size documents up to A3 (11 x 17 in.)
- Bundled with CapturePerfect and Adobe® Acrobat® Standard

DR-2050SP

Fast document scanning plus PC-less "Scan to Projector" functionality



The DR-2050SP is an enhanced model offering the same outstanding document scanning features, plus Presentation Mode for direct connection to any standard projector.

- Scan and project documents; load and project images from USB memory or an infrared-equipped mobile device
- High-quality SXGA output resolution
- Wireless remote control



Type	Desktop sheetfed scanner
Document feeding	Automatic sheet feeding
Document size**	Width: 55 – 216 mm (2.16 – 8.5 in.) Length: 70 – 355 mm (2.75 – 13.9 in.)
Document thickness	Automatic feeding: 0.06 – 0.15 mm, 52 – 128 g/m ² Manual feeding: 0.05 – 0.20 mm, 42 – 157 g/m ²
Feeding capacity	5 mm stack or 50 sheets (A4/LTR, 80 g/m ²)
Scanning element	CMOS Contact Image Sensor
Light source	RGB (red, green, blue) LED
Scanning modes	Simplex / Duplex Black and White, Text Enhancement, Error Diffusion Grayscale (8-bit) Color (24-bit) Resolution: 100 dpi • 150 dpi • 200 dpi • 240 dpi 300 dpi • 400 dpi • 600 dpi
Scanning speed	Black and White: 20 ppm (Simplex), 38 ipm (Duplex) (A4/LTR, Portrait, 200 dpi) Grayscale: 20 ppm (Simplex), 38 ipm (Duplex) Color: 7 ppm (Simplex), 12 ipm (Duplex)
Interface	Hi-Speed USB 2.0
Scanner driver	ISIS / TWAIN
Application software	Canon Capture Perfect, Adobe Acrobat, ScanSoft OmniPage SE
Useful functions	Folio Scanning, Color Dropout, Deskew, Automatic Page Size Detection, Skip Blank Page, Border Removal, Prescan, Gamma Compensation, Batch Separation, User Preferences
Power requirements	AC100 – 120V, 50/60Hz AC220 – 240V, 50/60Hz
Power consumption**	DR-2050C: 14W max. DR-2050SP: 16W or less
Operating environment	10 – 32.5°C (50 – 90.5°F), 20 – 80% RH
Dimensions (W x D x H)	298 x 100 x 197 mm (11.7 x 3.9 x 7.7 in.)
Weight	DR-2050C: Approx. 2.5 kg (5.0 lb.) DR-2050SP: Approx. 2.6 kg (5.7 lb.), scanner unit only
Options / Consumables	Please refer to the back cover of this brochure.

*1 Document size up to 297 x 420 mm (11 x 17 in.) in Folio mode, document length up to 297 mm (11.7 in.) when feeding multiple sheets at once.

*2 Conforms to ENERGY STAR standards for energy efficiency. Specifications are subject to change without notice.

DR-2050SP specifications during Presentation Mode

The following specifications apply to the DR-2050SP during Presentation Mode only. For DR-2050SP Scanning Mode specifications, please refer to the above.

Scanning side	Simplex / Duplex
Scanning mode	Color (24-bit), 150dpi (fixed)
Scanning speed	6 ppm (Simplex), 6 ipm (Duplex) (A4/LTR, Color, Portrait, 150dpi)
Output signals	SXGA (1,280 x 1,024), XGA (1,024 x 768), SVGA (800 x 600); automatic
Interface	Analog RGB output, USB memory slot, USB 2.0 (for scanning mode only), Infrared communication, remote control infrared
Included accessories	Remote control, batteries, VGA cable

Specifications are subject to change without notice.

For more information on the DR-2050C or the DR-2050SP, please ask your local authorized Canon representative for the individual product brochures.



DR-2580C *Ultra-compact color duplex scanner with two feeding mechanisms and optional flatbed*



- **Space-saving compact color scanner featuring customizable job buttons**
- **Fast scanning speeds - 25 ppm simplex and 50 ipm duplex (A4/LTR, B&W, 200 dpi)**
- **U-Turn Path and Straight Path feeding mechanisms to accommodate a wide range of source materials including plastic cards**
- **Ultra-reliable scanning with Ultrasonic Double Feed Detection**
- **Folio function to scan larger-size documents up to A3 (11 x 17 in.)**
- **Punch Hole Removal function for clean scans of documents stored in binders**
- **Add an optional flatbed unit to scan fragile or oversize documents (two sizes available)**
- **Bundled with CapturePerfect and Adobe® Acrobat® Standard**



DR-2580C with optional Flatbed Scanner Unit



DR-2580C with optional Flatbed Scanner Unit HS

Type	Desktop sheetfed scanner
Document feeding	Automatic or manual sheet feeding
Document size*1	Width: 53 – 216 mm (2.08 – 8.50 in.) Length: 70 – 355.5 mm (2.75 – 13.9 in.)
Document thickness	Automatic feeding, U-turn: 0.06 – 0.15 mm, 52 – 128 g/m ² Automatic feeding, Straight: 0.05 – 0.20 mm, 42 – 157 g/m ² Manual feeding: 0.05 – 0.20 mm, 42 – 157 g/m ²
Card size and thickness	Size: 53.9 – 85.5 mm (2.12 – 3.36 in.) Thickness: 0.75 ± 0.08mm (0.03 ± 0.003 in.)
Feeding capacity	5 mm stack or 50 sheets (A4/LTR, 80 g/m ²)
Scanning element	CMOS Contact Image Sensor
Light source	RGB (red, green, blue) LED
Scanning modes	Simplex / Duplex Black and White, Advanced Text Enhancement, Error Diffusion Grayscale (8-bit) Color (24-bit) Resolution: 100 dpi • 150 dpi • 200 dpi • 240 dpi 300 dpi • 400 dpi • 600 dpi
Scanning speed	Black and White: 25 ppm (Simplex), 50 ipm (Duplex) (A4/LTR, Portrait, 200 dpi) Grayscale: 25 ppm (Simplex), 50 ipm (Duplex) Color: 13 ppm (Simplex), 26 ipm (Duplex)
Interface	SCSI-III / Hi-Speed USB 2.0
Scanner driver	ISIS / TWAIN
Application software	Canon CapturePerfect, Adobe Acrobat
Useful functions	Ultrasonic Double Feed Detection, Job Function, Folio, Punch Hole Removal, Rapid Recovery System, Color Dropout, Automatic Page Size Detection, Text Orientation Recognition, Skip Blank Page, Deskw, Gamma Compensation, Prescan, User Preferences
Power requirements	AC100 – 120V, 50/60Hz AC220 – 240V, 50/60Hz
Power consumption*2	1.4A or less (Standby: 6W or less)
Operating environment	10 – 32.5°C (50 – 90.5°F), 20 – 80% RH
Dimensions (W x D x H)	302 x 171 x 81 mm (11.9 x 6.7 x 3.2 in.)
Weight	Approx. 1.8 kg (4 lb.)
Options/Consumables	Please refer to the back cover of this brochure.

*1 Document size up to 297 x 420 mm (11 x 17 in.) in Folio mode. Document length up to 1,000 mm (39.4 in.) in Long Document Mode.

*2 Conforms to ENERGY STAR standards for energy efficiency. Specifications are subject to change without notice.

For more information on the DR-2580C, please ask your local authorized Canon representative for the individual product brochure.



DR-3080CII *Versatile, all-around color desktop scanner featuring exceptional performance and reliability*



- Fast, high-quality scans in B&W, grayscale and color
- 30 ppm simplex and 60 ipm duplex (A4/LTR, B&W, 200 dpi)
- Reliable 100-sheet capacity feeder
- Folio function for scanning documents up to A3 (11 x 17 in.)
- On-screen scan panel for quick and easy operation
- Bundled with CapturePerfect and Adobe® Acrobat® Standard

Type	Desktop sheetfed scanner
Document feeding	Automatic or manual sheet feeding
Document size*	Width: 55 – 257 mm (2.2 – 10.1 in.) Length: 70 – 364 mm (2.8 – 14.3 in.)
Document thickness	Automatic feeding: 0.06 – 0.15 mm, 52 – 128 g/m ² Manual feeding: 0.05 – 0.20 mm, 42 – 157 g/m ²
Feeding capacity	100 sheets (A4/LTR, 80 g/m ²)
Scanning element	CMOS Contact Image Sensor
Light source	RGB (red, green, blue) LED
Scanning modes	Simplex / Duplex Black and White, Advanced Text Enhancement, Error Diffusion Grayscale (8-bit) Color (24-bit) Resolution: 100 dpi • 200 dpi • 240 dpi 300 dpi (Normal / High Speed)
Scanning speed (A4/LTR, Portrait, 200 dpi)	Black and White: 30 ppm (Simplex), 60 ipm (Duplex) Grayscale: 30 ppm (Simplex), 60 ipm (Duplex) Color: 10 ppm (Simplex), 20 ipm (Duplex)
Interface	SCSI-III / Hi-Speed USB 2.0
Scanner driver	ISIS/ TWAIN
Application software	Canon CapturePerfect, Adobe Acrobat
Useful functions	Automatic Paper Thickness Adjustment, Auto Start, Color Dropout, Deskew, Folio, Margin Scan, Page Size Detection, Scan Panel, Skip Blank Page
Power requirements	AC120V, 60Hz AC220 – 240V, 50/60Hz
Power consumption	50W or less (Energy Saving Mode: 12W or less)
Operating environment	10 – 32.5°C (50 – 90.5°F), 20 – 80% RH
Dimensions (W x D x H)	344 x 278 x 191 mm (13.5 x 11 x 7.5 in.)
Weight	Approx. 8.1 kg (17.8 lb.)
Options/ Consumables	<i>Please refer to the back cover of this brochure.</i>

* Document size up to 297 x 420 mm (11 x 17 in.) in Folio mode.
Specifications are subject to change without notice.

For more information on the DR-3080CII, please ask your authorized Canon representative for the individual product brochure.



DR-4010C

A4-size (8.5" x 11") color scanner featuring advanced image processing functions



- The same fast scanning speed for color, grayscale, and B&W
- 42 ppm simplex and 84 ipm duplex (A4, 200/300 dpi)
- Enhanced color accuracy with advanced 3-line CMOS sensor and 3D Color Correction
- Straight Path and U-Turn Path feeding for flexible scanning of a wide range of document types
- Folio function to scan larger-size documents up to A3 (11 x 17 in.)
- Advanced functions including Moire Reduction, Text Enhancement, Prevent Bleed Through / Remove Background, Custom Color Dropout and Punch Hole Removal
- Bundled with CapturePerfect and Adobe® Acrobat® Standard

Type	Desktop sheetfed scanner
Document feeding	Automatic or manual sheet feeding
Document size*1	Width: 53 - 219 mm (2.08 - 8.6 in.) Length: 70 - 356 mm (2.75 - 14 in.)
Document thickness	Automatic feeding: 0.06 - 0.15 mm, 52 - 128 g/m ² Manual feeding, U-Turn: 0.05 - 0.2 mm, 42 - 157 g/m ² Manual feeding, Straight: 0.05 - 0.66 mm, 42 - 546 g/m ²
Card size and thickness	Size: 53.9 x 85.5 mm (2.12 x 3.37 in.) Thickness: 0.76 ± 0.08 mm (0.03 ± 0.003 in.)
Feeding capacity	10 mm stack or 100 sheets (A4/LTR, 80 g/m ²)
Scanning element	3-Line CMOS Contact Image Sensor
Light source	LED (red, green, and blue)
Scanning modes	Simplex / Duplex Black and White, Error Diffusion, High-Speed Text Enhancement, Advanced Text Enhancement (2 types) Grayscale (8-bit) Color (24-bit), Auto Color Detection Resolution: 100 x 100 dpi • 150 x 150 dpi • 200 x 200 dpi • 240 x 240 dpi 300 x 300 dpi • 400 x 400 dpi • 600 x 600 dpi
Scanning speed (A4/LTR, Portrait, 200 dpi)	Black and White: 42 ppm (Simplex), 84 ipm (Duplex) Grayscale: 42 ppm (Simplex), 84 ipm (Duplex) Color: 42 ppm (Simplex), 84 ipm (Duplex)
Interface	SCSI-III / Hi-Speed USB 2.0
Scanner driver	ISIS/TWAIN
Application software	Canon CapturePerfect, Adobe Acrobat
Useful functions	Job Function, Folio, Ultrasonic Double Feed Detection, Rapid Recovery System, Moire Reduction, Prevent Bleed Through / Remove Background, Punch Hole Removal, Color Dropout, Batch Separation, Automatic Page Size Detection, Text Orientation Recognition, Skip Blank Page, Deskew, Gamma, MultiStream™, Prescan, User Preferences
Power requirements	AC100 - 120V (50/60 Hz) AC220 - 240V (50/60 Hz)
Power consumption*2	25W maximum power (3W max. during standby)
Operating environment	10 - 32.5°C (50 - 90.5°F), Humidity: 20 - 80% RH
Dimensions (W x D x H)	Feed trays closed: 318 x 278 x 185.5 mm (12.5 x 10.9 x 7.3 in.)
Weight	Approx. 6.4 kg (14.1 lb.)
Options/Consumables	Please refer to the back cover of this brochure.

*1 Document size up to 297 x 420 mm (11 x 17 in.) in Folio mode, document length up to 1,000 mm (39.3 in.) in Long Document Mode.

*2 Conforms to ENERGY STAR standards for energy efficiency.

Specifications are subject to change without notice.

For more information on the DR-4010C, please ask your local authorized Canon representative for the individual product brochure.



DR-5010C A3-size (11" x 17") color scanner combining advanced functionality and ease-of-use



- The same fast scanning speed for color, grayscale, and B&W
- 50 ppm simplex and 100 ipm duplex (A4/LTR, 200 dpi)
- Enhanced color accuracy with advanced 3-line CMOS sensor and 3D Color Correction
- Straight Path and U-Turn Path feeding for flexible scanning of a wide range of document types
- Advanced functions including Custom Color Dropout and Punch Hole Removal
- Bundled with CapturePerfect and Adobe® Acrobat® Standard



Type	Desktop sheetfed scanner
Document feeding	Automatic or manual sheet feeding
Document size	Width: 53 – 300 mm (2 – 11.8 in.) Length: 70 – 432 mm (2.75 – 17 in.)
Document thickness	Automatic feeding: 0.06 – 0.15 mm, 52 – 128 g/m ² Manual feeding, U-turn: 0.05 – 0.20 mm, 42 – 157 g/m ² Manual feeding, Straight: 0.05 – 0.66 mm, 42 – 546 g/m ²
Card size and thickness	Size: 53.9 – 85.5 mm (2.12 – 3.36 in.) Thickness: 0.75 ± 0.08 mm (0.03 ± 0.003 in.)
Feeding capacity	10 mm stack or 100 sheets (A4/LTR, 80 g/m ²)
Scanning element	3-Line CMOS Contact Image Sensor
Light source	RGB (red, green, blue) LED
Scanning modes	Simplex / Duplex Black and White, Advanced Text Enhancement, High-Speed Text Enhancement, Error Diffusion Grayscale (8-bit) Color (24-bit) Resolution: 100 dpi • 150 dpi • 200 dpi • 240 dpi 300 dpi • 400 dpi • 600 dpi
Scanning speed	Black and White: 50 ppm (Simplex), 100 ipm (Duplex) (A4/LTR, Portrait, 200 dpi) Grayscale: 50 ppm (Simplex), 100 ipm (Duplex) Color: 50 ppm (Simplex), 100 ipm (Duplex)
Interface	SCSI-III / Hi-Speed USB 2.0
Scanner driver	ISIS/ TWAIN
Application software	Canon CapturePerfect, Adobe Acrobat
Useful functions	Ultrasonic Double Feed Detection, Skew Detection, Rapid Recovery System, Color Dropout (RGB or Custom), Automatic Page Size Detection, Text Orientation Recognition, Skip Blank Page, Deskew, Gamma Compensation, MultiStream™, Prescan, User Preferences
Power requirements	AC100 – 120V, 50/60Hz AC220 – 240V, 50/60Hz
Power consumption*	120W or less (Energy Saving Mode: 6W or less)
Operating environment	10 – 32.5°C (50 – 90.5°F), 20 – 80% RH
Dimensions (W x D x H)	398.4 x 312 x 191.4 mm (15.6 x 12.3 x 7.5 in.)
Weight	Approx. 10.5 kg (23 lb.)
Options/ Consumables	Please refer to the back cover of this brochure.

* Conforms to ENERGY STAR standards for energy efficiency. Specifications are subject to change without notice.

For more information on the DR-5010C, please ask your local authorized Canon representative for the individual product brochure.



DR-7080C *High-speed, high-quality sheetfed or flatbed color capture in one universal package*



- Ultra fast 70 ppm scanning in color and B&W (A4/LTR, 200 dpi)
- High-quality 3-line CCD sensor
- ADF with inclined-plane separating mechanism for efficient batch scanning
- Built-in flatbed for fast and easy scanning of fragile or oversize documents
- Copier-like front-panel operation
- Programmable Job keys for easy, one-touch scanning
- Bundled with CapturePerfect software



Type	Desktop ADF (Automatic Document Feeder) / flatbed scanner
Document feeding	Automatic sheet feeding / flatbed
Document size*1	Width: 139.7 – 304.8 mm (5.5 – 12 in.) Length: 128 – 432 mm (5 – 17 in.)
Document thickness*2	B&W documents (Simplex): 0.06 – 0.15 mm, 42 – 128 g/m ² B&W documents (Duplex): 0.07 – 0.15 mm, 50 – 128 g/m ² B&W/Color documents (Mixed): 0.07 – 0.15 mm, 50 – 128 g/m ² Color documents: 0.08 – 0.15 mm, 64 – 128 g/m ²
Feeding capacity*2	100 sheets (A4/LTR)
Scanning element	3-line CCD
Light source	Xenon lamp
Scanning modes	Simplex / Duplex Black and White, Advanced Text Enhancement, Error Diffusion Grayscale (8-bit) Color (24-bit) Resolution: 100 dpi • 150 dpi • 200 dpi • 240 dpi 300 dpi • 400 dpi • 600 dpi
Scanning speed (A4/LTR, Landscape, 200 dpi)	Black and White: 70 ppm (Simplex), 36 ipm (Duplex) Grayscale: 70 ppm (Simplex), 36 ipm (Duplex) Color: 70 ppm (Simplex), 36 ipm (Duplex)
Interface	SCSI-III / Hi-Speed USB 2.0
Scanner driver	ISIS/ TWAIN
Application software	Canon CapturePerfect
Useful functions	Automatic Paper Thickness Adjustment, Batch Separation, Border Removal, Color Dropout, Deskew, Job Function, Gamma Correction, MultiStream™, Page Size Detection, Skip Blank Page, Text Orientation Recognition
Power requirements	AC120V, 60Hz AC220 – 240V, 50/60Hz
Power consumption	150W or less (Energy Saving Mode: 12W or less)
Operating environment	15 – 30°C (59 – 86°F), 25 – 80% RH
Dimensions (W x D x H)	575 x 602 x 300 mm (22.6 x 23.7 x 11.8 in.)
Weight	Approx. 33.6 kg (74 lb.)
Options/Consumables	Please refer to the back cover of this brochure.

*1 Document length up to 630 mm (24.8 in.) in Long Document Mode, up to 540 mm (21 in.) in Long Document Mode, 600 dpi Color.

*2 When scanning documents using the ADF.

Specifications are subject to change without notice.

For more information on the DR-7080C, please ask your local authorized Canon representative for the individual product brochure.



DR-9080C *High-speed duplex color scanning for documents up to A3-size (11" x 17")*



- Superior scanning speeds of up to 90 ppm in B&W or 50 ppm in color (A4/LTR, Simplex, 200 dpi)
- Scan document sizes up to A3 (11 x 17 in.) at up to 600 dpi resolution
- Generous 500-sheet capacity ADF (A4/LTR size, 200 sheets, A3/Ledger size.)
- Ultrasonic Double Feed Detection and Staple Detection for uncompromising reliability and accuracy
- MultiStream™ technology for simultaneous image output
- Bundled with CapturePerfect software

DR-7580

Efficient, large-volume binary and grayscale scanning



The DR-7580 is a companion model offering the same excellent image quality and diverse features at top speeds of 75 ppm and 150 ipm, exclusively in B&W and grayscale.

Type	Desktop sheetfed scanner
Document feeding	Automatic or manual sheet feeding
Document size*	Width: 55 – 305 mm (2.2 – 12.0 in.) Length: 70 – 432 mm (2.8 – 17.0 in.)
Document thickness	Automatic feeding: 0.06 – 0.15 mm, 52 – 128 g/m ² Manual feeding: 0.05 – 0.30 mm, 42 – 255 g/m ²
Feeding capacity	500 sheets (up to A4/LTR), 200 sheets (up to A3/Ledger)
Scanning element	CMOS Contact Image Sensor
Light source	RGB (red, green, blue) LED
Scanning modes	Simplex / Duplex Black and White, Advanced Text Enhancement, Error Diffusion Grayscale (up to 8-bit) Color, Smoothing Color (up to 24-bit, DR-9080C only) Resolution: 100 dpi • 150 dpi • 200 dpi • 240 dpi 300 dpi • 400 dpi • 600 dpi
Scanning speed	DR-9080C: Black and White: 90 ppm (Simplex), 180 ipm (Duplex) (A4/LTR, Portrait, 200 dpi) Grayscale: 90 ppm (Simplex), 180 ipm (Duplex) Color: 54 ppm (Simplex), 92 ipm (Duplex) DR-7580: Black and White: 75 ppm (Simplex), 150 ipm (Duplex) Grayscale: 75 ppm (Simplex), 150 ipm (Duplex)
Interface	SCSI-III / Hi-Speed USB 2.0
Scanner driver	IISIS/ TWAIN
Application software	Canon Capture Perfect
Useful functions	Automatic Paper Thickness Adjustment, Batch Separation, Border Removal, Color Dropout, Deskew, Gamma Compensation, MultiStream™, Page Size Detection, Paper Length Detection, Skip Blank Page, Staple Detection, Text Orientation Recognition, Ultrasonic Double Feed Detection
Power requirements	AC100 – 120V, 50/60Hz AC220 – 240V, 50/60Hz
Power consumption	120W or less (Energy Saving Mode: 12W or less)
Operating environment	10 – 32.5°C (50 – 90.5°F), 20 – 80% RH
Dimensions (W x D x H)	460 x 525 x 312 mm (18.1 x 20.7 x 12.2 in.)
Weight	Approx. 25 kg (55.1 lb.)
Options/ Consumables	Please refer to the back cover of this brochure.

*1 Document length up to 1,000 mm (39.4 in.) in Long Document Mode.

The DR-7580 includes all the same features as the DR-9080C, with the exception of scanning speeds, 24-bit color scanning, and related functions.

For more information on the DR-9080C/7580, please ask your local authorized Canon representative for the individual product brochure.



CR-55 Compact, front-office color check scanner for efficient check truncation



- Countertop unit ideal for use in limited spaces such as teller counters
- High-quality check imaging at 55 cpm (U.S. personal checks)
- Ultra-reliable paper handling with Infrared Double Feed Detection
- High precision magnetic head for precise MICR recognition, plus OCR capabilities
- MICR reading, endorsement printing, and scanning in one quick process
- Industry-standard Ranger driver with IQA (Image Quality Assurance) support



Type	Desktop check scanner
Document feeding	Built-in automatic feeder
Document size	Height: 60 – 106 mm (2.0 – 4.2 in.) Length: 80 – 228 mm (3.2 – 9.0 in.)
Document thickness	0.08 – 0.2 mm, 64 – 157 g/m ²
Feeding capacity	50 checks
Ejection pocket	One pocket
Scanning element	CMOS Contact Image Sensor
Light source	RGB (red, green, blue) LED
Scanning modes	Simplex / Duplex Black and White, Advanced Text Enhancement, Adaptive Threshold, Error Diffusion Grayscale (up to 8-bit) Resolution: 100 dpi • 150 dpi • 200 dpi • 300 dpi
Scanning speed*1	Black and White: 55 cpm; 24-bit Color: 23.8 cpm
Interface	SCSI-III / Hi-Speed USB 2.0
Scanner drivers	Canon driver, Ranger™
Application software	Scanning Utility 55
Useful functions	Color Dropout, Infrared Double Feed Detection, Page Size Detection
Power requirements	AC120V, 60Hz / AC220 – 240V, 50/60Hz
Power consumption*2	27W or less (Standby: 4W or less)
Operating environment	10 – 32.5°C (50 – 90.5°F), 20 – 80% RH
Dimensions (W x D x H)	140 x 223 x 188 mm (5.5 x 8.8 x 7.4 in.), with tray closed
Weight	Approx. 2 kg (4.4 lb.)
Options / Consumables	Please refer to the back cover of this brochure.

CR-180 High-speed check scanner featuring automated indexing and MICR processing



- Powerful unit with built-in jogger and sorting pockets ideal for use in heavy-duty back-office environments
- Incredibly fast throughput at 180 cpm (U.S. personal checks)
- High precision magnetic head for precise MICR recognition, plus OCR capabilities
- Five key steps in one process—stack alignment, MICR reading, endorsement printing, scanning, and sorting
- Industry-standard Ranger driver with IQA (Image Quality Assurance) support



Type	Desktop check scanner
Document feeding	Built-in automatic feeder
Document size	Height: 60 – 118 mm (2.4 – 4.6 in.) Length: 120 – 230 mm (4.7 – 9.1 in.)
Document thickness	0.08 – 0.2 mm, 60 – 120 g/m ²
Feeding capacity	200 checks
Sorting pockets	2 output pockets
Scanning element	CMOS Contact Image Sensor
Light source	RGB (red, green, blue) LED & white LED array
Scanning modes	Simplex / Duplex Black and White, Advanced Text Enhancement, Adaptive Threshold, Error Diffusion Grayscale (up to 8-bit) Resolution: 100 dpi • 150 dpi • 200 dpi • 240 dpi
Scanning speed*1	Black and White: 180 cpm
Interface	SCSI-III / Hi-Speed USB 2.0
Scanner drivers	Canon driver, ISIS/TWAIN driver, Ranger™
Application software	Scanning Utility 180
Useful functions	Color Dropout, Double Feed Detection, Emboss Enhancement, Page Size Detection
Power requirements	AC120V, 60Hz / AC220 – 240V, 50/60Hz
Power consumption	50W or less (Energy Saving Mode: 12W or less)
Operating environment	10 – 32.5°C (50 – 90.5°F), 20 – 80% RH
Dimensions (W x D x H)	399 x 242 x 271 mm (15.7 x 9.5 x 10.7 in.), with tray closed
Weight	Approx. 6.3 kg (13.9 lb.)
Options / Consumables	Please refer to the back cover of this brochure.

*1 Scanning conditions: U.S. personal checks, 200 dpi, B&W. *2 Conforms to ENERGY STAR standards for energy efficiency. Specifications are subject to change without notice. For more information on the CR-55 or the CR-180, please ask your local authorized Canon representative for their individual product brochures.



CD-4070NW *A self-contained scanning system with CD-R recording, plus network file-sharing options*



■ **Rapid B&W scanning at speeds up to 32 ppm or 64 ipm, plus color (A4/LTR, 200 dpi)**

■ **Ultra-reliable feeding of a wide range of document sizes**

■ **Ease of use with high resolution 8.4-inch touch panel**

■ **Record to CD-R or scan to a networked PC**

■ **Built-in archive for easy remote search and retrieval via Web browser**

■ **Create text-searchable PDF files**



Type	Desktop CD-R document recorder
Document feeding	Automatic or manual sheet feeding
Document size	Width: 55 – 257 mm (2.2 – 10.1 in.) Length: 70 – 364 mm (2.8 – 14.3 in.)
Document thickness	Automatic feeding: 0.06 – 0.15 mm, 52 – 128 g/m ² Manual feeding: 0.05 – 0.20 mm, 42 – 157 g/m ²
Feeding capacity	100 sheets (A4/LTR)
Scanning element	CMOS Contact Image Sensor
Scanning modes	Simplex / Duplex Black and White, Advanced Text Enhancement, Error Diffusion Grayscale (8-bit) Color (24-bit) Mix Mode (Front: 24-bit Color, Back: 256-level Grayscale) Resolution: 100 dpi • 200 dpi • 240 dpi 300 dpi (Normal / High Speed)
Scanning speed	Black and White: 32 ppm (Simplex), 64 ipm (Duplex) (A4/LTR, Portrait, 200 dpi) Grayscale: 32 ppm (Simplex), 64 ipm (Duplex) Color: 10 ppm (Simplex) Mix Mode: 30 ipm (Duplex) Multi-page TIFF, PDF, JPG
File format	Automatic Paper Thickness Adjustment, Color Dropout,
Useful functions	Network scanning functions, Page Size Detection, Patch Code Detection, Skip Blank Page
Power requirements	AC120V, 60Hz: 2.5A AC220 – 240V, 50/60Hz: 1.0A
Power consumption	100W or less
Operating environment	10 – 32.5°C (50 – 90.5°F), 20 – 80% RH
Dimensions (W x D xH)*	352 x 412 x 265 mm (13.9 x 16.2 x 10.4 in.)
Weight	15 kg (33.1 lb.)
Options/Consumables	<i>Please refer to the back cover of this brochure.</i>

CD Recorder

Media	650MB/700MB CD-R Recordable Compact Disc System Part II Compliant
Writing method	Track-at-once

Control Panel

Type	TFT 8.4-inch color Liquid Crystal Display
Touch panel	Built-in LCD

* Not including control panel.

Specifications are subject to change without notice.

For more information on the CD-4070NW, please ask your local authorized Canon representative for the individual product brochure.

DOCUMENT SCANNERS

Options

Main unit	Name	Product code	Details
DR-2580C	Flatbed Scanner Unit (A4/LTR)	0106B001	Optional flatbed unit
	Flatbed Scanner Unit (A5)	0106B003	Optional flatbed unit
DR-3080CII / CD-4070NW	Endorser ED500 120V	3649A001	Back side endorsement
	Endorser ED500 220-240V	3649A002	Back side endorsement
DR-5010C	Imprinter 50F	0837B001	Front side imprinting
	Imprinter 50B	0837B002	Back side imprinting
DR-7080C	Stamp Unit A1	9664A001	
DR-7580/9080C	Imprinter	8927A001	Front side imprinting
	Hard counter	8927A002	Counts number of pages fed through
	Endorser ED600	3650A005	Back side endorsement
	Die Drum 600	3650A006	For the additional requirement. Used for ED600.
DR2580C/4010C/5010C/ 7580/9080C/CD-4070NW	Barcode Module II	0434B003	Software module to read barcode

Exchange Roller Kit

Main unit	Name	Product code	Details	Details
DR-2050C / SP	Exchange Roller Kit	7982A001	30,000 scans	Pick-up roller / Feed roller
DR-2580C	Exchange Roller Kit	0106B002	100,000 scans	Upper feed roller / Lower feed roller
DR-3080CII / CD-4070NW	Exchange Roller Kit 500K	6915A001	500,000 scans	Pick-up roller x2 / Feed roller
	Exchange Roller Kit 1M	6915A002	1,000,000 scans	Delivery roller / Drive roller / Resist roller
DR-4010C	Exchange Roller Kit	1921B001	250,000 scans	Pick-up roller unit / Separation roller unit
DR-5010C	Exchange Roller Kit	0434B002	250,000 scans	Pick-up roller / Retard roller / Feed roller
DR-7080C	Exchange Roller Kit	9664A002	80,000 scans	Pick-up roller / Feed roller / Separation pad / Separation base
DR-7580 / 9080C	Exchange Roller Kit	8927A004	250,000 scans	Pick-up roller / Retard roller / Feed roller

Imprinter / Endorser Consumables

Main unit	Name	Product code	Details
DR-7580 / 9080C (with Imprinter) / CR-55 / CR-180	Ink Cartridge Blue	3693A002	1,750,000 characters *1
	Ink Cartridge Red	3693A003	1,750,000 characters *1
	Ink Cartridge Green	3693A004	1,750,000 characters *1
DR-5010C (with Imprinter 50F / 50B)	Ink Tank 50 Black	0836B001	2,470,000 characters *2
	Ink Tank 50 Red	0836B002	2,470,000 characters *2
	Ink Tank 50 Purple	0836B003	2,470,000 characters *2
ED500 (for DR-3080CII, CD-4070NW) / ED600 (for DR-7580/9080C)	Ink Roller 32 Red	3695A001	200,000 scans
	Ink Roller 33 Black	3695A002	200,000 scans
	Ink Roller 34 Blue	3695A003	200,000 scans

*1 60 sheets / batch, Normal font, 7 characters / sheet

*2 60 sheets / batch, Ink-saving mode, 7 characters / sheet

Adobe and Acrobat are either registered trademarks or trademarks of Adobe Systems Incorporated in the United States and/or other countries. ENERGY STAR and the ENERGY STAR mark are registered U.S. trademarks. MultiStream is a trademark of EMC Corporation in the United States. Other company names and product names appearing in this brochure are the registered trademarks and/or trademarks of their respective owners.

Canon

CANON ELECTRONICS INC.

1248, Shimokagemori, Chichibu-shi, Saitama 369-1892, Japan

www.canon-elec.co.jp

CANON U.S.A. INC.
New York Office/Headquarters: One Canon Plaza, Lake Success, NY 11042, U.S.A. Tel: (516) 328-5000

CANON CANADA, INC.
Toronto Office/Headquarters: 6390 Dixie Road, Mississauga, Ontario L5T 1P7, Canada Tel: (905) 795-1111

CANON EUROPA N.V.
Bovenkerkerweg 59-61, P.O.Box 2262, 1180 EG Amstelveen, The Netherlands Tel: (020) 545-8545

CANON LATIN AMERICA, INC.
703 Waterford Way, Suite 400, Miami, Florida 33126, U.S.A. Tel: (305) 260-7400

CANON AUSTRALIA PTY. LTD.
1 Thomas Holt Drive, North Ryde, Sydney, NSW 2113, Australia Tel: (02) 9805-2000

CANON SINGAPORE PTE. LTD.
1 Harbour Front Avenue, #04-01 Keppel Bay Tower, Singapore 098632 Tel: (65) 6799-8888

CANON HONGKONG COMPANY LTD.
19th Floor, The Metropolis Tower, 10 Metropolis Drive, Hunghom, Kowloon, Hong Kong Tel: (852) 2170-2828

CANON (CHINA) CO., LTD.
15F Jinbao Building No.89 Jinbao Street, Dongcheng District, Beijing 100005, China Tel: (010) 8513-9999

CANON KOREA BUSINESS SOLUTIONS INC.
168-12 Samsong-Dong, Kangnam-ku, Seoul, Korea Tel: (02) 3450-0700

Free Manuals Download Website

<http://myh66.com>

<http://usermanuals.us>

<http://www.somanuals.com>

<http://www.4manuals.cc>

<http://www.manual-lib.com>

<http://www.404manual.com>

<http://www.luxmanual.com>

<http://aubethermostatmanual.com>

Golf course search by state

<http://golfingnear.com>

Email search by domain

<http://emailbydomain.com>

Auto manuals search

<http://auto.somanuals.com>

TV manuals search

<http://tv.somanuals.com>