

CanoScan LiDE 35 Scanner

Canon

advanced simplicity®



Quality scans, the simple way.



Copy, Scan,
PDF File, Email



USB 2.0 Hi-Speed

CanoScan LiDE 35 Scanner

USER-FRIENDLY SCANNING. SUPER SLIM DESIGN

Whether you want to create files for emailing, images for printing, versatile PDFs, or scan text documents using time-saving text-recognition software, the CanoScan LiDE 35 lets you do it all – in slimline style. With a high-speed USB 2.0 interface, it provides fast data transfer. A single USB cable connects the CanoScan LiDE 35 to your computer and also provides power, so there's no need for an additional power cord. And at just 38mm thick, the CanoScan LiDE 35's sleek design leaves your desk clutter-free.



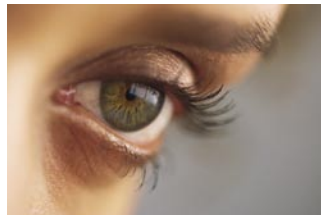
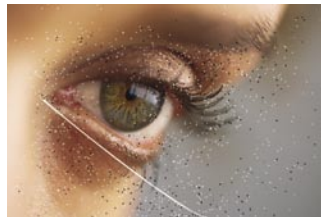
ONE-TOUCH CONVENIENCE

The CanoScan LiDE 35 features four programmable one-touch buttons on its front panel – Copy, Scan, PDF File and Email. Use 'Copy' to print scanned images¹ and 'PDF File' to convert documents into text-searchable PDFs that can be emailed and stored easily. Save time scanning multiple photos using Multi-Scan mode. This mode can scan multiple photos in a single pass before automatically straightening and naming each image.²



HIGH QUALITY SCANS

Scanning at 1200 dpi optical resolution, the CanoScan LiDE 35 guarantees you razor-sharp images, every time. Using its advanced Z-lid, it ensures bulky items, such as books, are scanned flat, with no loss of quality. Add to this its QARE level 2 technology, which makes old photos look new by reducing dust marks, scratches and correcting fading and graininess, and the CanoScan LiDE 35 is your indispensable, imaging tool.



QARE level 2 technology removes dust and scratches

CanoScan LiDE 35 Scanner Specifications

TYPE	Flatbed Scanner
SCANNING ELEMENTS	CIS (Contact Image Sensor)
LIGHT SOURCE	RGB three-colour LED
OPTICAL RESOLUTION	1200 x 2400 dpi
SELECTABLE RESOLUTION	75/100/150/200/300/400/600/1200 dpi
INCREASED RESOLUTION*	25-2400/4800/7200/9600 dpi
SCANNING GRADATION	Colour: 48-bit input / 48-bit or 24-bit output Greyscale: 16-bit input / 8-bit output
PREVIEW*	Approx. 9 seconds
SCANNING TIME* (A4)	Colour: 45 sec. (600 dpi) / 179 sec. (1200 dpi) Greyscale/Black and White: 15 sec. (600 dpi) / 60 sec. (1200 dpi)
INTERFACE	USB 2.0 Hi-speed (also compatible with USB 1.1)
MAXIMUM SIZE	A4/LTR, 216 x 297mm
POWER SUPPLY	Via USB
POWER CONSUMPTION	2.5W (max), 1.25W (standby)
DIMENSIONS	258 x 374 x 38mm (W x L x H)
WEIGHT	Approx 1.6 kg
OPERATING RANGE	5 – 35°C, 10 – 90% RH (without condensation)
OPERATING ENVIRONMENT	Windows*: OS: Windows® 98/98SE/Me®, Windows® 2000 Professional, Windows® XP Home Edition/Professional. PC: IBM PC/AT compatible, USB port (excluding add-on USB port), CD-ROM drive (2x or faster). Display: 65,000 or more colours, 800 x 600 or more pixels. CPU: Pentium 150 MHz or higher. RAM: 64MB or more, 128MB or more for Windows® XP Macintosh*: OS: Mac OS X (native mode only): 10.1.3-10.1.x, 10.2.7-10.3.3 ⁵ PC: Macintosh® with USB support (add-on USB boards not supported). Display: 32,000 or more colours. CPU: PowerPC G3 or higher. RAM: 64MB or more (OS X requires 128MB or more)
STANDARD EQUIPMENT	Scanner, USB Cable, Quick Start Guide, Upright scanning stand, CD-ROM (Includes ScanGear CS for Windows®, ScanGear CS for Macintosh® (plug-in module ⁶) CanoScan Toolbox, ArcSoft PhotoStudio, ScanSoft OmniPage SE ⁷ , Adobe Acrobat Reader and electronic (PDF, HTML) manuals for both Windows® and Macintosh®



The one year warranty can be upgraded to 3 years for a minimal cost and is backed by Canon's Customer Care Info-Line support. Driver updates and Technical Support are also available from our websites canon.com.au or canon.co.nz



Canon Australia Pty. Ltd.
ABN 66 005 002 951

1 Thomas Holt Drive,
North Ryde, NSW 2113, Australia
Freecall: 1800 021 167
Facsimile No: + 61 2 9805 2632

Canon New Zealand Limited
Akoranga Business Park,
Akoranga Drive, Northcote, Auckland, New Zealand
Telephone No: 0800 222 666
Facsimile No: + 64 9 489 0380

canon.com.au
canon.co.nz
canon.com.au/digitalimage

Canon® and the Canon logo are registered trademarks and CanoScan and ScanGear are trademarks of Canon Inc. 'advanced simplicity' is a registered trademark of Canon Australia Pty Limited. Microsoft and Windows are registered trademarks of Microsoft Corporation in the United States and in other countries. Apple, Macintosh and Mac are registered trademarks of Apple Computer Inc. in the United States and in other countries. The USB-IF logos are trademarks of Universal Serial Bus Implementers Forum, Inc. All other trademarks are the property of their respective owners.

- Optional printer required.
- Correct procedures outlined in the manual for photo positioning should be followed when using Multi-Scan mode.
- Increased resolution is a function of the ScanGear CS driver software.
- Calibration processing time not included.
- USB 2.0 Hi-Speed quoted. Scan time only, data transfer time not included.
- Windows 98 and Mac OS X v 10.1.3-v 10.2.6 support USB 1.1 performance only.
- ScanSoft OmniPage SE (OCR software) does not support Windows 98 first edition.
- To use ScanGear CS as a plug-in Adobe Photoshop 7.0 is required, sold separately.

Free Manuals Download Website

<http://myh66.com>

<http://usermanuals.us>

<http://www.somanuals.com>

<http://www.4manuals.cc>

<http://www.manual-lib.com>

<http://www.404manual.com>

<http://www.luxmanual.com>

<http://aubethermostatmanual.com>

Golf course search by state

<http://golfingnear.com>

Email search by domain

<http://emailbydomain.com>

Auto manuals search

<http://auto.somanuals.com>

TV manuals search

<http://tv.somanuals.com>