

**Canon**

**imagePRESS**

**Server**

**A3200**

**A2200**

**A1200**



**STAND OUT**

# STANDOUT VERSATILITY



DRAG-AND-DROP SIMPLICITY



FAST AND ACCURATE IMPOSITION TOOLS



STREAMLINED PRODUCTION WORKFLOWS

## Intuitive controls. Easily scalable. High performance.

Canon knows what you need to stand out in today's competitive environment. With imagePRESS Servers powered by EFI Fiery®, you'll get the most versatile solution to drive your new Canon imagePRESS digital press.

### A Legacy of Leadership

Three imagePRESS® Servers—the A3200, A2200, and A1200—are powered by EFI Fiery®, with its legacy of leadership and reliable performance in operations like yours. And all are available to help you get the most from your new Canon imagePRESS C7010VP/C6010VP/C6010 digital presses.

Each server features the latest technology, including the latest RIP engines from Adobe®. They use 64-bit Windows® XP Professional FES to control all hardware components, help strengthen the base feature-set, and provide the reliability you need. Fiery System 9 R2 supports similar workflows for Windows 7 and Mac OS X 10.6, and features like RIP-While-Receive provide robust processing and printing performance.

### Enhanced Productivity to Power Your Efficiency

Every print shop seeks to be more efficient and save costs while growing revenue and profits. EFI Fiery imagePRESS Servers feature powerful job control tools that produce more work in less time to help you meet tight deadlines and achieve optimal productivity.

FEATURE	BENEFIT
<b>Faster, Customized Processing with Servers</b>	<ul style="list-style-type: none"> <li>• <b>imagePRESS Server A3200</b> For graphics-intensive files and variable data jobs.</li> <li>• <b>imagePRESS Server A2200</b> For efficient, reliable production color printing.</li> <li>• <b>imagePRESS Server A1200</b> For one of the strongest color values in the industry.</li> </ul>
<b>RIP-While-Receive</b>	<ul style="list-style-type: none"> <li>• Spooling, processing, and printing multiple jobs at the same time to help increase productivity per shift.</li> <li>• Increases processing performance for large-size files.</li> </ul>
<b>Fiery Hot Folder Updates</b>	<ul style="list-style-type: none"> <li>• Fiery Hot Folders automate print workflows with drag-and-drop simplicity. Filters for Hot Folders are now grouped for more intuitive use.</li> <li>• Merge multiple TIFF, JPEG, or PDF files into a single file, thereby streamlining the processing for graphics-intensive applications.</li> <li>• More control without opening additional applications.</li> <li>• Exclusive-use grouping facilitates assigning folders to specific users or customers, reducing steps and processing errors.</li> </ul>

## Usability for straight-forward, reliable operation

Time is money. Powerful tools and enhancements on the Canon imagePRESS servers powered by EFI Fiery get each print job out the door faster and easier than ever.

FEATURE	BENEFIT
<b>Command WorkStation 5.2 (CWS 5.2)</b>	<ul style="list-style-type: none"> <li>A user-friendly design offers greater functionality.</li> <li>On Windows or Mac OS computers, CWS 5.2 gets jobs done quickly and efficiently, all from a central location.</li> <li>Files and devices can be viewed, configured, and managed.</li> <li>Previously RIPed and printed jobs can be edited, reprinted, or reused.</li> </ul>
<b>SeeSequence Suite with Impose/Compose</b>	<ul style="list-style-type: none"> <li>A set of graphically-rich imposition, composition, preview, and editing tools offer fast and accurate document preparation. Production of complex static and VDP jobs is simplified. Readily prep booklets, books, manuals with tabs, coupons, postcards, business cards, and more.</li> <li>Imposition templates can be created and saved for reuse, eliminating redundant tasks and reducing errors.</li> <li>VDP elements can be imposed and saved as PDFs.</li> </ul>
<b>Booklet Mode Enhancement for Perfect Binding</b>	Streamlined setup for production of perfect-bound booklets saves time, enhances quality, and reduces errors and waste.

## Professional Integration for Optimal Efficiency

State-of-the-art tools work together to streamline production and provide class-leading performance, color management, security and reliability.

FEATURE	BENEFIT
<b>Support for Adobe PDF Print Engine 2 (APPE)</b>	<ul style="list-style-type: none"> <li>APPE directly RIPs PDF files without conversion to PostScript, retaining original file contents, such as transparency, for reliable, accurate printing.</li> <li>Enables and centrally manages end-to-end automated PDF workflows.</li> </ul>
<b>Built-in Fiery JDF</b>	<ul style="list-style-type: none"> <li>Simplified setup with built-in Fiery JDF enables automated workflows and bi-directional connectivity.</li> <li>Hybrid integration with many prepress systems, such as Agfa :Apogee and Heidelberg Prinect.</li> </ul>
<b>Security (Secure Erase and removable hard drives)</b>	<ul style="list-style-type: none"> <li>Offer data security, especially for VDP and cross-media jobs that contain customer information. Secure Erase deletes all information stored on an imagePRESS Server, so that once a job is run, its data isn't accessible anymore.</li> <li>An optional removable hard disk lets you store the drive in multiple locations for added security.</li> </ul>
<b>Variable Data Capabilities</b>	<ul style="list-style-type: none"> <li>SeeSequence Impose offers Visual Imposition to speed setup and delivery of finished documents. The consistent Fiery interface reduces training times for faster adoption and greater productivity.</li> <li>Support for industry-leading VDP formats, including PPML 2 and Fiery Freeform™.</li> </ul>

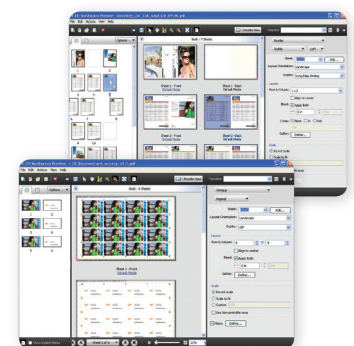
## Powerful Color Controls for Optimal Quality

Canon imagePRESS Servers powered by EFI Fiery provide color controls to help ensure that virtually every image you print meets customer demands for a wide range of documents and applications.

FEATURE	BENEFIT
<b>ColorWise Controls for Advanced Color Management</b>	<ul style="list-style-type: none"> <li>Professional color management tools control and manage color to help achieve reliable results.</li> <li>Tools to enable accurate color reproduction are available when reproducing custom and spot colors, such as PANTONE® and other named colors.</li> <li>The imagePRESS Server can be optimized for using ColorWise rendering styles, CMYK simulations, and ICC profiles.</li> </ul>
<b>Two Graphic Arts Packages</b>	This comprehensive tool-set streamlines production, color management, trapping, halftone simulation, and more.
<b>Fiery Image Enhance</b>	Simplified controls for red-eye correction, as well as adjusting exposure, shadows, highlights, and color cast help make every image look its best.
<b>Image Smoothing</b>	Adjust images to provide the even gradations in color and shading that make faces, objects, and backgrounds look more natural.



EFI Fiery Integrated Workstation



SeeSequence Impose and Compose screens

	<b>A3200</b>	<b>A2200</b>	<b>A1200</b>
<b>Printer Compatibility</b>	Canon imagePRESS C7010VP/ C6010VP/C6010	Canon imagePRESS C7010VP/ C6010VP/C6010	Canon imagePRESS C6010
<b>Software Version</b>	Fiery System 9 R2	Fiery System 9 R2	Fiery System 9 R2
<b>Command WorkStation</b>	Version 5.2	Version 5.2	Version 5.2
<b>CPU</b>	2X Intel Xeon X5560, 2.80 GHz Processor	Intel Core 2 Quad Q9550, 2.83GHz Processor	Intel Core 2 Quad Q9400, 2.66 GHz Processor
<b>System Memory</b>	4GB	3GB	2GB
<b>Hard Disk Configuration</b>	250GB, 2 x 500GB	2 x 250GB	250GB
<b>Ports</b>	8 USB Ports 2 Ethernet Ports	8 USB Ports 2 Ethernet Ports	8 USB Ports 2 Ethernet Ports
<b>Color Measurement Device</b>	X-Rite i1 Spectrophotometer	X-Rite i1 Spectrophotometer	X-Rite i1 Spectrophotometer
<b>Fiery Integrated Workstation</b>	Standard	Optional	Optional
<b>Adobe PDF Print Engine 2</b>	Standard	Standard	Not Supported
<b>Fiery SeeQuence Suite</b>	Standard	Standard	Optional
<b>Fiery Graphic Arts Package, Premium Edition (GAPPE)</b>	Standard	Optional	Optional
<b>Fiery Graphic Arts Package</b>	Included in Premium Edition	Standard	Standard
<b>Removable Hard Disk</b>	Optional	Optional	Optional
<b>Fiery JDF</b>	Standard	Standard	Standard
<b>Fiery Spot-On</b>	Standard	Standard	Standard
<b>Fiery Image Enhance</b>	Standard	Standard	Standard
<b>File Input Formats</b>	PostScript 3, PPML 2, EPS, PDF Version 1.3-1.7, JPEG (with GAPPE), TIFF 6.0 JDF, PDF-X1a		
<b>Operating Software</b>	Microsoft Windows XP Professional Edition 64-bit FES (for embedded systems)		
<b>Network</b>	Ethernet 10/100/1000Base-T 802.1x Authentication		
<b>Utilities</b>	Fiery Command WorkStation, Hot Folders, Fiery Remote Scan, Fiery Clone Tool, Fiery Bridge		
<b>Power Supply</b>	115V/15A	115V/15A	115V/15A
<b>Server Dimensions (H x W x D)</b>	22.7" x 8.4" x 23.1"	19.2" x 8.4" x 19"	19.1" x 8.5" x 19"
<b>Weight</b>	66.9 lb.	43.5 lb.	43.5 lb.

**Canon**  
*image*ANYWARE



Scan this QR code with your smartphone to learn more about Canon production solutions.

PANTONE is a registered trademark of Pantone Inc. CANON, IMAGEPRESS, and the GENUINE logo are registered trademarks of Canon Inc. in the United States and may also be registered trademarks or trademarks in other countries. IMAGEANYWARE is a trademark of Canon. All other referenced product names and marks are trademarks of their respective owners and are hereby acknowledged. Some items may not be available at this time; please check for availability. Specifications and availability subject to change without notice. All printer output images are simulated.

©2010 Canon U.S.A., Inc. All rights reserved.

Federal Law prohibits copying of certain documents. Violators may be subject to penalties. We suggest that you check with your own legal counsel. Canon U.S.A., Inc. and Canon Canada, Inc. intend to cooperate with Law Enforcement Agencies in connection with claims of unauthorized copying.



1-800-OK-CANON  
[www.usa.canon.com](http://www.usa.canon.com)

Canon U.S.A., Inc.  
One Canon Plaza  
Lake Success, NY 11042



## Free Manuals Download Website

<http://myh66.com>

<http://usermanuals.us>

<http://www.somanuals.com>

<http://www.4manuals.cc>

<http://www.manual-lib.com>

<http://www.404manual.com>

<http://www.luxmanual.com>

<http://aubethermostatmanual.com>

Golf course search by state

<http://golfingnear.com>

Email search by domain

<http://emailbydomain.com>

Auto manuals search

<http://auto.somanuals.com>

TV manuals search

<http://tv.somanuals.com>