

CARBINE *Plus*

Remote Start
Keyless Entry
Vehicle Security





Carbine Remote Start — One Touch to Comfort
 With the push of a button, Carbine's Remote Start System allows you to control the climate inside your car, from your home or office, regardless of the conditions outside, by using the two-way remote transmitter.

At last, you can enjoy the full comfort of your vehicle all year long. Say goodbye to endless windshield de-icing and frozen door locks in winter. Say hello to a cool, tempered vehicle even while parked in the hot summer sun.

REMOTE START SECURITY SYSTEM



PLUS-6850 2-Way Remote Start, Security and Keyless Entry System with Code Hopping Transmitters

Remote Start Features:

- Full transmitter control for activation and shut down modes
- RPM limiter
- Hood open bypass and shut down
- 2 ignition circuit relays on-board (3 ignition circuit capability)
- Parking lights "On" indicates vehicle is running by remote starter
- Universal application with timer, current and tach sensing modes
- Works on all automatic transmission gasoline and diesel vehicles with computer controlled fuel injection
- Selectable run timer (5, 10, 20 and 30 minutes)
- Controls heating and air conditioning systems
- 2 programmable outputs (3 functions available for each output)
- Siren and horn outputs can work at the same time
- Parking lights flash with alarm status indication
- Ignition key "On" lock/unlock control
- Multi-function LED indicator
- Dome light supervision
- 12 remote programmable features
- Dual-zone shock sensor with warn away chirps
- Remote panic and car finder function
- User choice silent arm/disarm
- User choice RF shock sensor delete

Transmitter Features:

- 2 soft touch rubber, high frequency 4-button transmitters
- Dedicated buttons for lock, unlock, panic and remote start
- SAW technology for increased performance and range
- 1,500 ft. range with 2-way transmitter
- 500 ft. range with 1-way transmitter

Plug-In Dual-Zone Shock Sensor:

- 2-stage trigger system with pre-warning output
- Advanced piezo detector
- Sensitivity adjustment with dual LED indicators

Optional Accessories:

- Starter disable (ALA-RPS)
- 5 wire ground at rest door locking system (ALA-DL1)
- One wire multiplexing door locking system (ALA-DL1)

PK.6 WT.19

See our Data Bus Interface Solutions on page 5

Alarm Features:

- Trunk release output
- Remote keyless entry with driver's door priority unlock

SECURITY AND KEYLESS ENTRY SYSTEM

PLUS-5850

2-Way Security and Keyless Entry System with Code Hopping Transmitters

Features:

- One AM/AM 2-way code hopping anti-scan/anti-code grab LCD transceiver with up to 1,500 ft. of range (sending and receiving)
- One AM/AM code hopping anti-scan/anti-code grab back-up transmitter with 500 ft. of range
- Every remote function confirmed by an audio tone and message on the LCD display
- 5 separate alarm trigger zones
- Keyless entry and remote panic with unlock driver's door first capability
- Installer test mode
- Over 33 programmable features including: auto arming with auto locking, ignition "On" door locking, channel 4 timer control
- Built-in parking light flash control relay
- Optional starter disable (requires ALA-RPS)
- Dual-zone shock sensor

PK. 6 WT. 8

See our
Data Bus Interface Solutions
on page 5



2-CHANNEL SECURITY SYSTEM

PLUS-4800

2-Channel Remote Vehicle Security System with Code Hopping Transmitters

Features:

- Two 434 mhz 4-button, miniature remote transmitters with lithium batteries for longer life
- Electronic dual-zone shock sensor
- Multi-function light flasher with relay built-in
- Flashing LED status indicator to ward off would-be thieves
- Power door lock/unlock activation (option)
- High-output 6-tone siren
- Horn output (-)
- Dome light supervision output (requires ALA-RPT relay)
- Programmable double unlock pulse
- Programmable last door auto arm & auto lock
- Ignition key "On" door lock
- Second channel to remotely release the trunk or rear hatch (5-mode programmable option)
- Starter disable output to prevent the car from starting when the alarm is armed or triggered (requires ALA-RPS relay)
- Remote panic
- Remote shock-sensor delete
- Remote valet
- 5-wire door lock relay module (requires optional ALA-DL1)

PK. 12 WT. 28



PRIVATE LABEL

PL61

3-Channel Security System with Code Hopping Transmitters



Standard Features:

- Two, 4-button code hopping transmitters with separate lock and unlock buttons
- Built-in relays for starter disable, parking lights flash and dome light supervision
- Horn and siren output
- 60 second rearming timer with automatic door relocking
- Trigger inputs for all doors and hood/trunk
- Dip switch programmable current sensor trigger
- Dip switch programmable automatic locking of power door locks when the security system automatically arms
- Dip switch programmable ignition key controlled door lock/unlock
- Plug-in alarm status LED indicator
- Plug-in valet/override switch
- (+/-) power door lock outputs
- Channel 2 and 3 ground output for optional accessories
- 3 mode trigger memory
- Eeprom code memory

Remote Controlled Features:

- Arming/disarming of security system with or without chirp confirmation
- Panic
- Channel 2
- Channel 3

Remote Programmable Features:

- Chirp status indicator on/off
- Safety illumination sentinel system
- Automatic arming

Optional Accessories:

- Five wire ground at rest door locking system (ALA-DL1 or ALA-DL2 with T-harness)
- One wire multiplexing door locking system (ALA-DL1 or ALA-DL2 with T-harness)
- Driver's door unlock first output (hardwire)
- Additional feature disable (ALA-RPS)
- Remote trunk or rear hatch release (ALA-RPT)
- Plug-in dual-zone sensor (ALA-95, ALA90)

PK.12 WT.11

PL21

Security System Upgrade for All Factory Installed Remote Keyless Entry Systems



Standard Features:

- Built-in 40 amp starter disable relay
- Positive/negative door pin input triggers
- Auxiliary ground input trigger for hood/trunk pin
- Plug-in alarm status LED indicator
- Plug-in valet/override switch
- 60 second rearm timer
- Horn or optional siren output
- Plug-in dual-stage electronic shock sensor port with prewarning chirp (shock sensor not included)
- Remote personal panic system activated by factory remote keyless entry transmitters
- Pathway illumination and parking lights stay "On" for 30 seconds after disarm

- Door lock switch disarm protection

Programmable Features:

- Pathway illumination
- Automatic/passive arming
- Chirp status indicator on/off
- Panic on/off
- Ignition control door lock/unlock: locks/unlocks doors when ignition key is turned on/off (optional feature, hardwire only; some vehicles may require relays)

PK.12 WT.11

DATA BUS INTERFACE SOLUTIONS

Vehicle Data Bus Interface Solutions are available in either a reprogrammable or fixed-function solution. These choices offer the utmost in flexibility, inventory control, time and cost savings while virtually eliminating obsolescence.

Reprogrammable (Upgradeable) Vehicle Interface Solutions Offer the Following Benefits:

- Easy upgradeability
- Free firmware upgrades / downloads
- Superior coverage offering a just-in-time solution

Vehicle specific firmware solutions can be downloaded directly to the module from the Magnadyne website. An internet ready PC and a simple plug-and-play USB adapter (ALA-XLOADER) are all that is required to "flash" a module with new firmware. The ALA-XLOADER even has a unique smart upgrade feature, which automatically identifies if a newer version of firmware is available for download.

Thousands of possible solutions are easily searched via a user friendly and intuitive online install wizard to help the user select the correct vehicle firmware solution. Enhanced coverage, functionality and greater flexibility packed into a just-in-time solution insures that obsolete inventory is a thing of the past.



ALA-XLOADER



Reprogrammable Vehicle Interface

REPROGRAMMABLE INTERFACE SOLUTIONS

ALA-XLOADER

• USB computer interface that is required to reprogram modules ALA-D2DX01 thru ALA-D2DX07 and the ALA-D2DX510 module. Reprogramming software is available on our web site. PK. 1 WT. 1

ALA-D2DX01 - Platform 1

• Preprogrammed for GM door lock, alarm data control. Includes passlock/VATS bypass for remote start (no key required). Can be reprogrammed for Ford/Lincoln, Hyundai, Toyota/Lexus, Audi, Kia, VW, Chrysler/Dodge/Jeep, Honda/Acura, Isuzu (door lock and alarm data only). PK. 6 WT. 2

ALA-D2DX02 - Platform 2

• Preprogrammed for Nissan door lock, alarm data control. Can be reprogrammed for Honda/Acura, Infinity, Nissan and Subaru. PK. 6 WT. 2

ALA-D2DX03 - Platform 3

• Preprogrammed for Dodge, Chrysler and Jeep door lock, alarm data control. PK. 6 WT. 2

ALA-D2DX04 - Platform 4

• Preprogrammed for Ford, Lincoln, Mercury PATS transponder bypass (no key required). PK. 6 WT. 2

ALA-D2DX05 - Platform 5

• Preprogrammed for Toyota/Lexus Transponder Bypass (no key required). Can be reprogrammed for most Japanese imports and some U.S. imports. Acura/Honda, Kia, Hyundai, Mazda, Nissan, Chevrolet and Pontiac imports. PK. 6 WT. 2

ALA-D2DX06 - Platform 6

• Preprogrammed for GM passlock/VATS bypass (no key required). Includes Saab and Saturn. PK. 6 WT. 2

ALA-D2DX07 - Platform 7

• Preprogrammed for Nissan/Infinity. Transponder bypass (no key required). PK. 6 WT. 2

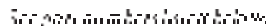
ALA-D2DX510 - Platform 510

• Preprogrammed for KIA. Provides a universal transponder bypass (key required) and door lock, alarm data control. Can be reprogrammed for General Motors, Ford/Lincoln, Hyundai, Toyota/Lexus, Audi, VW, Chrysler/Dodge/Jeep, Honda/Acura, Isuzu and Saab. PK. 6 WT. 2

Fixed-Function (Non-Upgradeable) Vehicle Interface Solutions Offer the Following Benefits:

- Requires no additional programming steps
- No computer or interface needed
- Very economical when flexibility is not a concern

Fixed-Function Vehicle Override & Data Bus Solutions are the perfect choice when ordering as needed or doing volume installations on applicable vehicles.



Fixed-Function Vehicle Interface

FIXED-FUNCTION INTERFACE SOLUTIONS

ALA-CHDLRS

• Dodge, Chrysler, Jeep door lock, alarm data and transponder key bypass (no key required). Fixed feature package - not upgradeable. PK. 6 WT. 2

ALA-GMDLRS

• General Motors door lock, alarm data and passlock/VATS key bypass (no key required). Fixed feature package - not upgradeable. PK. 6 WT. 2

ALA-GMPV

• General Motors passlock/VATS key bypass required. Includes Ion and Hybrid. Fixed feature package - not upgradeable. PK. 6 WT. 2

ALA-GMSIM

• Data starter bypass module for vehicles that do not have a start wire at the ignition key. Requires "ground when armed" signal from the aftermarket alarm module. PK. 6 WT. 2

ALA-HONT

• Honda/Acura transponder key bypass (no key required). Fixed feature package - not upgradeable. PK. 6 WT. 2

ALA-KESEC

• Output pulse generator provides arm/disarm signals from the factory keyless transmitter to any factory keyless upgrade alarm system. Connects to the data port on any D2D upgradeable module (D2D module is required for proper operation). PK. 6 WT. 2

RS-TIM

Remote Start Interface Module for Transponder Anti-Theft Type Systems

- Can be used for most vehicles that require a transponder type key to start vehicle
- Requires extra transponder key
- Only bypasses transponder system when remote starting - factory system stays intact
- Plugs into all remote starters

PK. 6 WT. 5



RS-TIM

KEYPAD KEYLESS SYSTEMS

For RVs, Trucks and Buses

Keypad Features:

- 6 button keypad with backlighting and beep confirmation tone
- Keypad outer dimensions: 6" x 2.25"
- "Screwless Look" mounting design
- Keyboard is recessed and angled for better viewing in sunlight
- 4-user programmable control codes
- 1 programmable OEM code for dealer lot control
- Dedicated lock button
- Auxiliary channel 3, 4 and 5 output control for the operation of additional items
- Optional cargo door lock/unlock
- Porch light on/off control

System Features:

- Marker light flash confirmation of lock and unlock functions (built in relay)
- Interior light activation for 30 seconds after unlock command (built in relay)
- All other outputs are transistor controlled (+ or - low voltage)
- Optional remote transmitter control
- Interior light and porch light control are powered by the RV batteries to eliminate main vehicle battery drain



MKE-100

Keypad Keyless System MKE-100

- Includes features listed above

Keypad Keyless System with 3-Button Remote Transmitters MKE-300A

- Includes features listed above
- Dedicated porch light control
- Two code hopping transmitters with dedicated vehicle lock/unlock
- Micro-sized weatherproof transmitters uses long life lithium batteries and rubber buttons for durability and feel



MKE-300A



MKE-400

Keypad Keyless System with 4-Button Remote Transmitters MKE-400

- Includes features listed above
- Porch light control
- Dedicated cargo lock/unlock button
- Two code hopping transmitters with dedicated vehicle lock/unlock
- Micro-sized weatherproof transmitters uses long life lithium batteries and rubber buttons for durability and feel

Keypad Keyless System with Built-in Security System and 4-Button Remote Transmitters MKE-500M

- Includes features listed above
- Added security system
- 3-zone trigger detection
- Protects entry doors and interior
- Horn or siren output
- Running lights flash if alarm is triggered
- Remote deletable sensor for arming vehicle while sleeping inside vehicle
- Programmable chirp status indication



MKE-500M

SIRENS



ALA115
ALA125

Compact Multi-Sound Siren

- ALA115 - 118dB output
- ALA125 - 130dB output with reduced initial output to provide soft chirps (on/off programmable)
- Computer programmed tone chip produces 6 different tones in sequence at 10 second intervals
- 12 Volt DC operation
- Replacement siren for all Carbine security systems

PK.12 WT.12

110dB Mini High-Pitch Piezo Interior Siren

- ALA103
- Ear piercing oscillating siren
- ABS housing 2-1/2" L x 1-3/4" W x 1-1/2" H
- Can be used with any alarm that utilizes an electronic siren

PK.12 WT.2



ALA103

POWER DOOR LOCK MOTOR AND INTERFACE



ALA50-DP

Power Door Lock Motor

- ALA50-DP
- 12 volt electronic gear drive motor
- Locks/unlocks any existing manual door lock system
- Installation hardware and wiring included
- Relay activation required for operation
- Can be used as a replacement for existing OEM door lock motors

PK.6 WT.5

Power Door Lock Relay Module with 3-Pin Plug

- ALA-DL1
- Used for interfacing with 5-wire door lock systems
- Built-in 40 amp relays with fused outputs
- Interfaces with one-wire multiplex door locking systems (fuse resistors required)
- U.S. Patent #5,635,769

PK.12 WT.4



ALA-DL1

DETECTORS AND SENSORS



ALA90

Mini Electromagnetic Dual-Zone Shock Sensor with 4-Pin Plug

ALA90

- Fluctuating magnetic field trigger technology
- Prewarning zone triggers from lighter impacts and low frequency sound resonance which normally cause false alarms
- Alarm trigger zone activates alarm when high-level impacts occur
- U.S. Patent #4,584,569

PK.12 WT.2



ALA969

Dual-Zone Microwave Sensor (Mass Detector)

ALA969

- Perimeter zone and alarm zone sensing
- True dual-zone adjustment capability with separate sensitivity
- Adjustments for Zone-1 and Zone-2
- Plug-in and play capable for Carbine alarm systems
- Can be installed as a single-zone sensor
- Powers on/off with the alarm

PK.12 WT.3



ALA95FKE

Shock Sensor Add-On for OEM Factory Security Systems

ALA95FKE

- Single-zone electronic shock/impact detector with sensitivity adjustment
- Easy 4-wire installation: power, ground, ignition and trigger
- Underdash mountable LED and valet switch holder
- LED and valet switch can be removed from underdash holder and custom mounted

PK.12 WT.2

Glass Breakage Detector

ALA925

- Sound discriminator circuit detects the sound of breaking glass
- Grounded output trigger will operate on all alarms systems
- Adjustable sensitivity and trigger LED
- Solid state electronics will never fall out of adjustment

PK.12 WT.3



ALA925

Electronic Wheel Protection Sensor

ALA965

- True X-Y coordinate based angle sensing
- Detects attempted jacking or towing of vehicle
- Sets and adjusts itself when alarm is armed

PK.12 WT.2



ALA965

Dual-Zone Shock Sensor with 4-Pin Plug

ALA95

- 2-stage trigger system with prewarning output
- Advanced piezo detector
- Sensitivity adjustment with dual LED indicators

PK.12 WT.2



ALA95

Dual-Zone Shock Sensor Add-On for OEM Factory Security Systems

ALA100FKE

- Designed to work on any vehicle with a factory installed security system
- Built-in shock sensor with prewarning beeper
- Arms and disarms using the factory remote controls
- Compatible with all factory security system trigger mechanisms
- Includes: LED, LED holder and valet override switch

PK.12 WT.4



ALA100FKE

RELAY PACKS



ALA-RPS

One-Circuit Immobilizer Relay Module

ALA-RPS

- 2-pin orange plug for all Carbine security systems
- Built-in 40 amp relay
- 12" wires

PK.6 WT.2



ALA-RPT

Trunk Pop or Dome Light Illumination Relay Module

ALA-RPT

- 2-pin orange plug for all Carbine security systems
- Built-in 40 amp relay

PK.6 WT.1



ALA-DL1

Universal Power Door Lock Relay Module with 3-Pin Plug

ALA-DL1

- Used for interfacing with 5-wire door lock systems
- Built-in 40 amp relays with fused outputs
- Interfaces with one wire multiplex door locking systems (fuse resistors required)
- U.S. Patent #5,635,769

PK.12 WT.4

Resistor Fuses

- Allows interfacing with one-wire and resistor controlled door lock systems
- Simply remove the existing fuse on our door lock module and replace with the correct value resistor fuse that matches the vehicle's value
- Patent #5,635,769



Model	Value	Model	Value
F6R-250	250 Ohm	F6R-1.47K	1.47K Ohm
F6R-270	270 Ohm	F6R-1.5K	1.5K Ohm
F6R-281	281 Ohm	F6R-1.8K	1.8K Ohm
F6R-315	315 Ohm	F6R-1.87K	1.87K Ohm
F6R-390	390 Ohm	F6R-2.0K	2.0K Ohm
F6R-402	402 Ohm	F6R-2.37K	2.37K Ohm
F6R-420	420 Ohm	F6R-2.7K	2.7K Ohm
F6R-470	470 Ohm	F6R-3.01K	3.01K Ohm
F6R-523	523 Ohm	F6R-3.2K	3.2K Ohm
F6R-620	620 Ohm	F6R-3.74K	3.74K Ohm
F6R-650	650 Ohm	F6R-4.02K	4.02K Ohm
F6R-665	665 Ohm	F6R-4.7K	4.7K Ohm
F6R-681	681 Ohm	F6R-4.75K	4.75K Ohm
F6R-750	750 Ohm	F6R-5.3K	5.3K Ohm
F6R-815	815 Ohm	F6R-5.6K	5.6K Ohm
F6R-887	887 Ohm	F6R-6.04K	6.04K Ohm
F6R-910	910 Ohm	F6R-7.2K	7.2K Ohm
F6R-1.0K	1.0K Ohm	F6R-7.50K	7.50K Ohm
F6R-1.13K	1.13K Ohm	F6R-9.1K	9.1K Ohm
F6R-1.3K	1.3K Ohm	F6R-9.53K	9.53K Ohm
F6R-1.4K	1.4K Ohm	F6R-11.80K	11.80K Ohm

MISC. ACCESSORIES



PLUS 10
CA10

Garage Door Opener for Code Hopping or Standard Transmitters PLUS 10

- Works with all aftermarket garage door opening systems that have a wall mounted open/close switch
- Receiver capable of learning 4 different transmitter codes
- Eeprom technology remembers the transmitter code even if the power supply is interrupted
- All transmitters that will operate the PLUS 10 must be the same, either code hopping or standard
- Requires 12 volt plug-in wall power supply (AC120-CA10)
- U.S. Patent #5,103,221

PK.12 WT.11

Garage Door Opener for Standard Transmitters CA10

- Same features as PLUS 10 but used with standard security system remote transmitters only
- Requires 12 volt plug-in wall power supply (AC120-CA10)

PK.6 WT.2

Garage Door Opener Power Supply AC120-CA10

- Supplies 12 Volt DC @ 300mA maximum from 120 Volts AC (wall current)
- UL listed

PK.6 WT.2

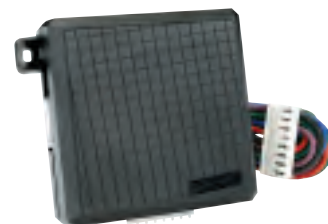


AC120-CA10

Power Window Roll Up/Down Interface ALA50-PWC3

- One module will operate two windows
- Rolls up windows automatically when security system is armed
- Additional trigger inputs allow windows to be rolled up and down using the Channel 2 or Channel 3 outputs
- Thermal control circuit prevents overrun of window motor
- Programmable load range settings
- Works on all power window systems
- Interfaces with all security systems

PK.12 WT.11



ALA50-PWC3

Wall Mounted Carbine Alarm Demonstration Display ALARM-DIS

- Full-function product display
- LED display to indicate alarm functions
- Requires a Carbine security system to be purchased separately

PK.1 WT.3



ALARM-DIS

LED'S & VALET OVERRIDE SWITCH

LED Holder LED-H

- Underdash alarm LED holder
- Fits all Carbine LEDs
- Black housing

PK.12 WT.1

Red 3 Volt Super Bright LED CA-LED1

- Plastic push-in housing without load resistor and 2-pin plug
- 2-1/2 ft. wires

PK.12 WT.1



CA-LED1

SPST Mini Toggle Switch with 2-Pin Plug ALA-TGLP

- Prewired with on/off plate
- 1 amp current capacity
- 2 ft. wires

PK.12 WT.1



ALA-TGLP

RELAY AND HARNESES

40 Amp SPDT 5-Pin Relay ALA984H

- 75V DC max switching voltage
- Max switch current 40A @ 14.0V
- Life expectancy 100,000 cycles @ 40A

PK.12 WT.2

Four Door Diode Isolation Package ALA-D4

- Diode isolates up to 4 doors into one alarm trigger wire
- Positive or negative door trigger operation
- 8 ft. long door pin connection wire

PK.12 WT.1



ALA984H



ALA-D4

Pre-Wired Starter Disable Relay Socket ALA986S

- Use ALA984H 40A SPDT 5-pin relay (not included)

PK.12 WT.3

2-Pin Plug Starter Disable Output Harness (Relay Required) HAR-HORN

- For use when plug-in relay packs are not used
- Provides ground output for a starter disable relay

PK.12 WT.1



ALA986S



HAR-HORN

Remote Transmitters and Batteries

TRANSMITTERS



ALA-RF3

ALA-RF3

- For models: AL375, AL475, AL575, AL675, AL775, CD574, CD575 and CD675



CD-RF6

CD-RF6

- For models: CDTL4, CD574A, CD575A, CD675, PL30S, PL40S, PL50S and PL60S



CA-RFK3

CA-RFK3

- 3-button code hopping key transmitter



CA-RC7

CA-RC7

- 1-way, 4-button code hopping transmitter
- For models: PLUS-6850 and PLUS-5850



CA-RFLCD2

CA-RFLCD2

- 2-way LCD remote transmitter
- For models: PLUS-6850 and PLUS-5850

PL-RC12

- 4-button code hopping transmitter without Carbine logo
- For Models: PL60C and PL61



PL-RC12

CA-RC4PET

- 4-button passive disarming transmitter with Carbine logo
- For models: PLUS-4500, PLUS-4600, PLUS-4700, PLUS-5500 and PLUS-5600



CA-RC4PET

CA-RC5HFS

- Replacement SAW remote transmitter
- For models: START1-PLUS, START2-PLUS, PLUS-6000, PL70 and PL80



CA-RC5HFS

CA-RC6HF

- Replacement SAW remote transmitter
- For models: PLUS-4500, PLUS-4700, PLUS-5500, PLUS-5600, PLUS-5800 and PLUS-6800



CA-RC6HF

CA-RFLCD1

- 2-way LCD remote transmitter
- For models: PLUS-5800 and PLUS-6800



CA-RFLCD1

BATTERIES



ALA-BATT/P

Replacement Transmitter Battery

ALA-BATT/P

- Fits most RF transmitters
- 12 Volt
- 5 batteries per card

PK. 25 WT. 1

Replacement Transmitter Battery

CR2032

- For CA-RC4PET transmitter (2 required)
- 3 Volt
- 5 batteries per card

PK. 5 WT. 1



CR2032

Replacement Transmitter Battery

CR2450

- 3 Volt
- 5 batteries per card

PK. 5 WT. 1



CR2450

PIN SWITCHES



ALA967

Mercury Switch with Plastic Housing

ALA967

- Open circuit design
- Pre-adjusted at 25° to prevent false tripping
- Unique spring clip or screw mounting

PK.12 WT.1



ALA-SP

Pin Switch Bracket

ALA-SP

- For use when a location can not be found to mount a pin switch in the trunk or under the hood
- Threaded to fit pin switch model ALA960

PK.12 WT.1



ALA940

Mini Magnetic Switch

ALA940

- Magnetic normally open circuit contact switch
- Ideal for circuits not utilizing pin switches
- Works on sliding windows, wing windows, t-tops, sunroofs, tool boxes and door jambs
- 11" lead-out wires attached

PK.24 WT.1

Waterproof Height Adjustable Pin Switch

ALA964

- Polycarbonate shaft will not rust or corrode
- 2-1/2" long with threaded shaft and adjusting nuts
- .250 male connection terminal

PK.12 WT.1



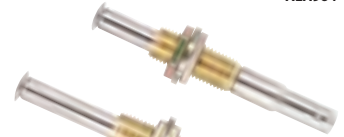
ALA964

Height Adjustable Shaft Pin Switch

ALA960AS (Short)

ALA960AL (Long)

PK.12 WT.1



ALA960AS



ALA960AL

Self-Tapping All Metal Pin Switch

ALA960ML

PK.12 WT.1



ALA960ML

Self-Tapping Cut-to-Fit Pin Switch

ALA960

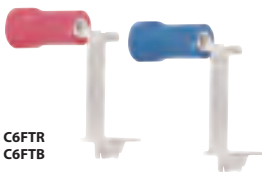
- Full nylon shaft is cut-to-fit type (cut shaft for adjustment)
- 100% waterproof

PK.12 WT.1



ALA960

FUSES, FUSE HOLDERS & TAPS



C6FTR
C6FTB

ATC Fuse Taps

C6FTR - 16-22 Gauge Wire (Red)

C6FTB - 14-16 Gauge Wire (Blue)

- Simply slide fuse tap over fuse blade for a quick and easy connection
- Does not interfere with vehicle's fused circuit
- Insulated crimp connector

PK.100 WT.1

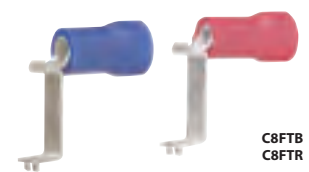
ATM Fuse Taps

C8FTB - 14-16 Gauge Wire (Blue)

C8FTR - 16-22 Gauge Wire (Red)

- Simply slide fuse tap over fuse blade for a quick and easy connection
- Does not interfere with vehicle's fused circuit
- Insulated crimp connector

PK.100 WT.1



C8FTB
C8FTR



ATC Blade Type Fuses

F63 - 3 amp **F620** - 20 amp

F65 - 5 amp **F625** - 25 amp

F67 - 7.5 amp **F630** - 30 amp

F610 - 10 amp **F635** - 35 amp

F615 - 15 amp **F640** - 40 amp

PK.50 WT.1

ATM Mini Blade Type Fuses

F83 - 3 amp **F815** - 15 amp

F85 - 5 amp **F820** - 20 amp

F87 - 7 amp **F825** - 25 amp

F810 - 10 amp **F830** - 30 amp

PK.50 WT.1



F3G

In-Line ATC Blade Type Fuse Holder

F3G - 14 Gauge Wire

- Handles 10-30 amps of current
- Fuse not included
- White plastic housing

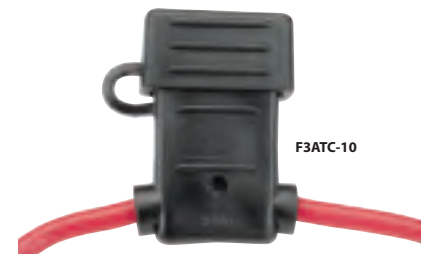
PK.50 WT.2

Waterproof In-Line ATC Blade Type Fuse Holder

F3ATC-10 - 10 Gauge Wire

- Handles 10-30 amps of current
- Fuse not included
- Black rubber housing

PK.12 WT.1



F3ATC-10

CONNECTORS



C93C
C91C

Crimp End Connectors

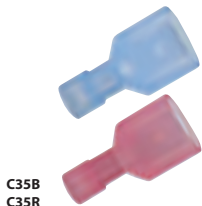
- C93C** - 8 Gauge Wire (Clear)
 - C91C** - 14-16 Gauge Wire (Clear)
- PK.100 WT.1



C50Y
C50B
C50R

Butt Connectors

- C50Y** - 10-14 Gauge Wire (Yellow)
 - C50B** - 14-16 Gauge Wire (Blue)
 - C50R** - 16-22 Gauge Wire (Red)
- PK.100 WT.1



C35B
C35R

Male Terminal Connectors

- C35B** - For 14-16 Gauge Wire (Blue)
 - C35R** - For 16-22 Gauge Wire (Red)
 - .250 terminal
 - Fully insulated
 - For use with 951K, 952K and 953K T-Taps
- PK.100 WT.1



C33B
C33R

Female Terminal Connectors

- C33B** - For 14-16 Gauge Wire (Blue)
 - C33R** - For 16-22 Gauge Wire (Red)
 - .250 terminal
 - Fully insulated
- PK.100 WT.1

Ring Connectors

- C40R** - 16-22 Gauge Wire (Red) with a 3/16" Inner Diameter
 - C40B** - 14-16 Gauge Wire (Blue) with a 3/16" Inner Diameter
 - C41B** - 14-16 Gauge Wire (Blue) with a 1/4" Inner Diameter
 - C41Y** - 10-14 Gauge Wire (Yellow) with a 1/4" Inner Diameter
 - C42B** - 14-16 Gauge Wire (Blue) with a 3/8" Inner Diameter
 - C42Y** - 10-14 Gauge Wire (Yellow) with a 3/8" Inner Diameter
- PK.100 WT.1



C40R
C40B
C41B
C41Y
C42B
C42Y

T-Tap Connectors

- 951K** - For 22-18 Gauge Wire (Red)
 - 952K** - For 18-14 Gauge Wire (Blue)
 - 953K** - For 12 Gauge Wire (Yellow)
 - No wire cutting necessary
 - For use with C35R and C35B male terminal connectors
- PK.100 WT.1



951K
952K
953K

INSTALLATION HARDWARE



SM075
SM100

#8 TEK Head Screw with Washer

- SM075** - 3/4" length
 - SM100** - 1" length
 - Black oxide finish
- PK.100



SR05
SR075
SR100

#8 Self-Tapping Phillips TEK Head Screw

- SR05** - 1/2" length
 - SR075** - 3/4" length
 - SR100** - 1" length
 - Black oxide finish
- PK.100



C84
C87
C812

Nylon Wire Ties

- C84** - 4" length
 - C87** - 7" length
 - C812** - 12" length
 - Black
- PK.100 WT.1

18 AWG PVC Coated Alarm Wire

- W-GRN-18** (Green)
 - W-BRN-18** (Brown)
 - W-RED-18** (Red)
 - W-WHT-18** (White)
 - Multi-strand copper conductor
 - 500 ft. per roll
- PK. 6 WT.29



Heavy-Duty Electrical Tape

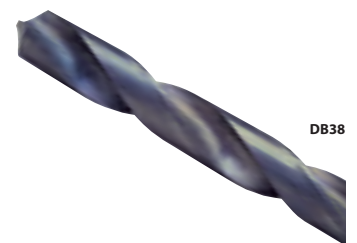
- 1500 TEMPLEX**
 - 8 mil. thick
 - 3/4 in. x 66 ft.
 - UL approved
 - Especially designed for automotive installations
- PK.10 WT.2



1500 TEMPLEX

High Speed Drill Bit

- DB38**
 - 3/8" diameter
- PK.5 WT.1



DB38

Los Angeles

Elkhart

Taipei

Hong Kong

Magnadyne Corporation

Mailing Address:

P.O. Box 5365
Carson, CA 90749-5365

Shipping Address:

1111 W. Victoria Street
Compton, CA 90220-5898

Telephone: (310) 884-7777

Fax: (310) 637-9542

Sales Order: (800) 638-3600

E-mail: sales@magnadyne.com

Web: www.magnadyne.com

ISO 9001



© Copyright 2007 Magnadyne Corporation
All Rights Reserved.

No part of this publication may be reproduced without the
expressed written permission of the Magnadyne Corporation.
Prices, specifications and data are subject to change without notice.

Printed in Taiwan
CAT0107C



Free Manuals Download Website

<http://myh66.com>

<http://usermanuals.us>

<http://www.somanuals.com>

<http://www.4manuals.cc>

<http://www.manual-lib.com>

<http://www.404manual.com>

<http://www.luxmanual.com>

<http://aubethermostatmanual.com>

Golf course search by state

<http://golfingnear.com>

Email search by domain

<http://emailbydomain.com>

Auto manuals search

<http://auto.somanuals.com>

TV manuals search

<http://tv.somanuals.com>