



## DT-4180

### Multi-Protocol & Multi-Network “All in One” Integrated Access Device



**A**s you transition your network to IP, how do you gain better control over the many legacy network elements that are incompatible with this new infrastructure? Application and network redesign, interoperability testing and configuration of new network elements is interruptive and costly.

#### ***Part of your solution is built into the DT-4180:***

A uniquely qualified Internet Protocol Access Device

The DT-4180 *mediates* a myriad of protocols with the ubiquitous IP protocol suite.

Its *specialized vertical services* typically found on a *Network Applications Computer* provides an enhanced implementation of protocol mediation between X.25 (*X.25 variants*) and IP.

Its resident *Time Slot Router* as a channel bank replacement provides further evidence that the DT-4180 offers unprecedented capability in an Integrated Access Device.

#### **Integrated Access Device**

The DT-4180 can be viewed as an internet protocol (IP) access device. That is, it mediates any of its supported protocols and the IP protocol suite. This includes IP, TCP, Telnet, RTP, ARP, SNMP, etc.

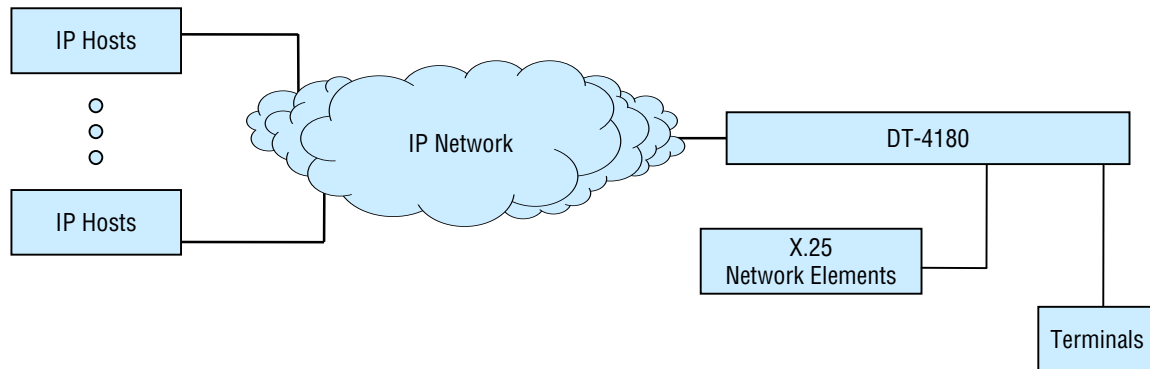
With 16 ports supporting speeds up to 115kbps the DT-4180 mediates the following protocols interchangeably on a per-port basis; asynchronous, various bi-synchronous variants, HDLC, SDLC, X.25 (*X.25 variants*), E2A, Variable Bit Rate, RBP and more.

#### **Key Features**

- Multiple protocol support for mediation over IP
- Closed User Group security for protection of sensitive network endpoints
- Peer-to-peer communications using secure encryption
- Extensive measurement reporting and diagnostic capabilities
- Time Slot Router / Channel Bank replacement
- Alarm grid interface
- SNMP management
- NEBS compliant for numerous applications

# DT-4180

## IP Telnet Access to X.25 Network Element Virtual Circuits



### Specialized Enhanced Vertical Services: X.25 (X.25 variants) Mediation with IP

The DT-4180 is also a Network Applications Computer. It applies customer specific protocol operations (protocol translation and termination) of network connections that require such a function in a distributed network.

The resident X.25 mediation application provides a greater degree of mediation by allowing a telnet client to interface on a per Virtual Circuit (VC) basis to X.25 (x.25 variants) network elements.

#### The X.25 mediation application supports:

- X.25 pass-through for Virtual Circuit (VC) aggregation
- Individual configuration of each X.25 Virtual Circuit (VC) as a PAD or a PASS-THROUGH interface
- Interfaces for the MacStar Operations Support System (OSS)
- Record Boundary Preservation (RBP) protocol
- Switched Virtual Circuit (SVC) hunt groups across X.25 lines, allowing fault tolerant X.25 links to be established.

### Time Slot Router (TSR) as a Channel Bank Replacement

With the TSR interface, T1, E1, or J1 Time Division Multiplexed (TDM) formats are supported. Each time slot may be uniquely routed on the IP WAN while individual CODECs may be installed for load optimization.

As a Channel Bank replacement, the DT-4180 can help reduce maintenance costs, power needs and free up valuable equipment floor and rack space.



## Free Manuals Download Website

<http://myh66.com>

<http://usermanuals.us>

<http://www.somanuals.com>

<http://www.4manuals.cc>

<http://www.manual-lib.com>

<http://www.404manual.com>

<http://www.luxmanual.com>

<http://aubethermostatmanual.com>

Golf course search by state

<http://golfingnear.com>

Email search by domain

<http://emailbydomain.com>

Auto manuals search

<http://auto.somanuals.com>

TV manuals search

<http://tv.somanuals.com>