

# Operation Guide 2673

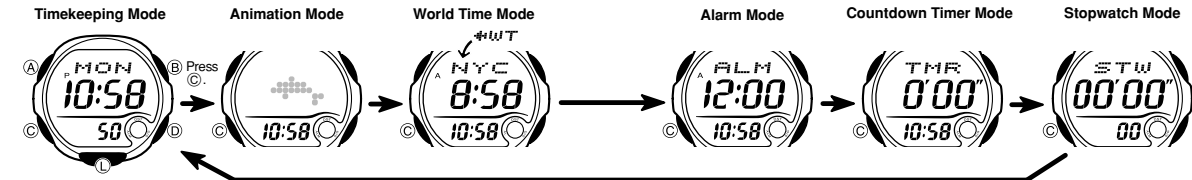
## About This Manual



- Button operations are indicated using the letters shown in the illustration.
- This watch is equipped with two color LCD panels. For the sake of simplicity, the screen shots in this manual are shown using only one color.
- Each section of this manual provides you with the information you need to perform operations in each mode. Further details and technical information can be found in the "Reference" section.

## General Guide

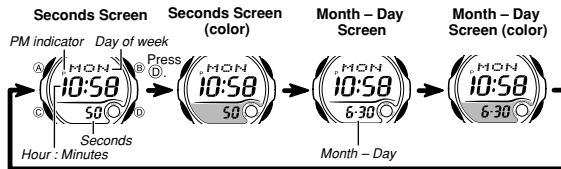
- Press **C** to change from mode to mode.
- In any mode, press **L** to illuminate the display.



## Timekeeping

Use the Timekeeping Mode to set and view the current time and date.

- Pressing **D** in the Timekeeping Mode cycles through available screen formats as shown below.



- When a color screen (seconds screen, month-day screen) is selected in the Timekeeping Mode, the current time that appears at the bottom of the display in other modes is also shown in color.

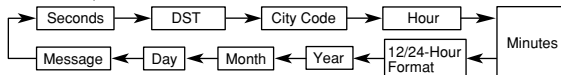
## Read This Before You Set the Time and Date !

The times displayed in the Timekeeping Mode and World Time Mode are linked. Because of this, make sure you select a city code for your Home City (the city where you normally use the watch) before you set the time and date.

### To set the time and date



1. In the Timekeeping Mode, hold down **A** until the seconds start to flash, which indicates the setting screen.
2. Press **C** to move the flashing in the sequence shown below to select other settings.



3. When the setting you want to change is flashing, use **D** and **B** to change it as described below.

Screen	To do this:	Do this:
50	Reset the seconds to 00	Press <b>D</b> .
DF F	Toggle between Daylight Saving Time (DF) and Standard Time (DF F)	Press <b>D</b> .
TYO	Change the city code	Use <b>D</b> (east) and <b>B</b> (west).
* 10:58	Change the hour or minutes	Use <b>D</b> (+) and <b>B</b> (-).
12H	Toggle between 12-hour (12H) and 24-hour (24H) timekeeping	Press <b>D</b> .
2003	Change the year	Use <b>D</b> (+) and <b>B</b> (-).
6-30	Change the month or day	
DF F	Change the message	

- For full information on city codes, see the "City Code Table".
  - See "Daylight Saving Time (DST)" for details about DST setting.
  - The preset message you select here appears in the Animation Mode. See "Using Graphic Animations" for more information.
  - See the list of preset messages for information about the preset messages that are available.
4. Press **A** to exit the setting screen.
- With the 12-hour format, the **P** (PM) indicator appears on the display for times in the range of noon to 11:59 p.m. and the **A** (AM) indicator appears for times in the range of midnight to 11:59 a.m. The **A** and **P** indicators are not displayed with the current time at the bottom of the display in other modes.
  - With the 24-hour format, times are displayed in the range of 0:00 to 23:59, without any indicator.
  - The 12-hour/24-hour timekeeping format you select in the Timekeeping Mode is applied in all modes.
  - The day of the week is automatically displayed in accordance with the date (year, month, and day) settings.

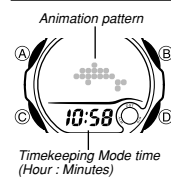
## Daylight Saving Time (DST)

Daylight Saving Time (summer time) advances the time setting by one hour from Standard Time. Remember that not all countries or even local areas use Daylight Saving Time.

### To toggle the Timekeeping Mode time between DST and Standard Time

1. In the Timekeeping Mode, hold down **A** until the seconds start to flash, which indicates the setting screen.
  2. Press **C** to display the DST setting screen.
  3. Press **D** to toggle between Daylight Saving Time (DF) and Standard Time (DF F).
  4. Press **A** to exit the setting screen.
- The DST indicator appears on the display to indicate that Daylight Saving Time is turned on.

## Using Graphic Animations



In the Animation Mode, the current time is shown in the lower part of the display, and a graphic animation is displayed in the center of the display. You can specify one of three different animation patterns. You can also configure the Animation Mode so it automatically displays the current time (as kept in the Timekeeping Mode) for about three seconds whenever you angle the watch towards your face for reading.

### Animation Patterns

- You can select any one of the following three animation patterns for the Animation Mode.
- Animal (Dolphin → Dog → Cat)
  - Baby-G (**B** → **A** → **B** → **Y** → **G**)
  - Seconds count of current time

### To select an animation pattern

1. Use **C** to enter the Animation Mode.
2. In the Animation Mode, each press of **D** cycles through the animation patterns in the sequence shown below.

### Preset Message Display

When the Animal animation pattern is selected, the watch will also display preset message selected by you in the Timekeeping Mode at the timing shown below.



- Note that the preset message does not appear if you disable the preset message function.

### To select a preset message

1. Use **C** to enter the Timekeeping Mode.
  2. In the Timekeeping Mode, hold down **A** until the seconds start to flash, which indicates the setting screen.
  3. Press **C** nine times to advance to the preset message selection screen.
  4. Use **D** (+) and **B** (-) to scroll through the preset messages until the one you want appears on the display.
- To disable the preset message function, display **DF F** in step 4.

On/Preset message function disabled (Off)

- The following is a list of available preset messages.

Displayed Message	Meaning
I ♥ YOU	I LOVE YOU
THNX	THANKS
CONGRATS	CONGRATULATIONS
CW2CU	CAN'T WAIT TO SEE YOU
MISN U	MISSING YOU
JST4U	JUST FOR YOU
U R GR8	YOU ARE GREAT
OFF	(Preset message function disabled.)

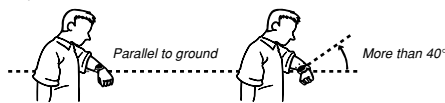
- Press (A) to exit the setting screen.

### Auto Time Display

You can configure the Animation Mode so it automatically displays the current time (as kept in the Timekeeping Mode) for about three seconds whenever you angle it towards your face for reading, as shown in the illustration below.

- Be sure to wear the watch on the outside of your left wrist while using auto time display.

Moving the watch to a position that is parallel to the ground and then tilting it towards your face more than 40 degrees causes the watch to display the current time automatically.



- See "Auto Time Display Precautions" for other important information.

### To turn auto time display on and off



On/off status

- Use (C) to enter the Animation Mode.
  - In the Animation Mode, hold down (A) for about one second to toggle auto time display on (00 displayed) and off (BFF displayed).
- The display returns to the animation screen automatically after about one second.

### World Time

Current time in the zone of the selected city code



Timekeeping Mode time (Hour : Minutes)

World Time shows the current time in 30 cities (27 time zones) around the world.

- All of the operations in this section are performed in the World Time Mode, which you enter by pressing (C).

### To view the time for another city code

In the World Time Mode, press (D) to scroll through city codes (time zones) to the east or (B) to scroll to the west.

- For full information about city codes, see the "City Code Table".
- If the current time shown for a city is wrong, check your Timekeeping Mode time and Home City code settings and make the necessary changes.

### To toggle a city code time between Standard Time and Daylight Saving Time



DST indicator

- In the World Time Mode, use (B) and (D) to display the city code (time zone) whose Standard Time/Daylight Saving Time setting you want to change.
  - Hold down (A) for about one second to toggle between Daylight Saving Time (DST indicator displayed) and Standard Time (DST indicator not displayed).
- The DST indicator is on the display whenever you display a city code for which Daylight Saving Time is turned on.
  - Note that the DST/Standard Time setting affects only the currently displayed city code. Other city codes are not affected.

### Alarm

Alarm time (Hour : Minutes)



Timekeeping Mode time (Hour : Minutes)

When the daily alarm is turned on, the alarm tone sounds when the alarm time is reached.

You can also turn on an Hourly Time Signal (:00) that causes the watch to beep twice every hour on the hour.

- All of the operations in this section are performed in the Alarm Mode, which you enter by pressing (C).

### To set an alarm time



Alarm time (Hour : Minutes)

- In the Alarm Mode, hold down (A) until the hour setting of the alarm time starts to flash, which indicates the setting screen.
  - This operation automatically turns on the alarm.
- Press (C) to move the flashing between the hour and minutes.
- While a setting is flashing, use (D) (+) and (B) (-) to change it.
  - With the 12-hour format, set the time correctly as a.m. (A indicator) or p.m. (P indicator).
- Press (A) to exit the setting screen.

### Alarm Operation

The alarm tone sounds at the preset time for about 10 seconds, regardless of the mode the watch is in. If the watch is in the Timekeeping Mode, Animation Mode, or Alarm Mode when an alarm starts to sound, an animation pattern also appears on the display along with the alarm.

- To stop the alarm tone after it starts to sound, press any button. Stopping the alarm also stops the animation associated with it.

### To test the alarm

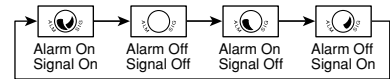
In the Alarm Mode, hold down (D) to sound the alarm.

### To turn the Daily Alarm and Hourly Time Signal on and off

In the Alarm Mode, press (B) to cycle through the on and off settings as shown below.



### Alarm On Indicator/Hourly Time Signal On Indicator



- The alarm on indicator flashes while the alarm is sounding.
- The alarm on indicator and Hourly Time Signal on indicator are displayed in all modes.

### Countdown Timer



Timekeeping Mode time (Hour : Minutes)

You can set the countdown timer within a range of one minute to 60 minutes. The countdown starts automatically as soon as you set a countdown start time. An alarm sounds when the countdown reaches zero.

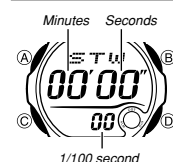
- All of the operations in this section are performed in the Countdown Timer Mode, which you enter by pressing (C).

### To use the countdown timer

Use (D) (+) and (B) (-) to set the countdown start time you want. The countdown will start automatically about one second after you set a time.

- Pressing (D) (+) or (B) (-) while a countdown is in progress changes the minute setting of the currently displayed time.
- When the end of the countdown is reached, the alarm sounds for 10 seconds or until you stop it by pressing any button.
- The countdown timer measurement operation continues even if you exit the Countdown Timer Mode.
- Press (A) to stop the countdown and return to the countdown start time to all zeros.
- If the watch is in the Timekeeping Mode, Animation Mode, or Countdown Timer Mode when the end of a countdown is reached, an animation pattern also appears on the display along with the alarm.

### Stopwatch

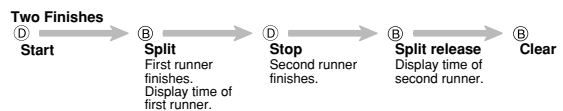
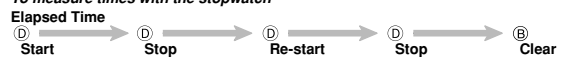


1/100 second

The stopwatch lets you measure elapsed time, split times, and two finishes.

- The display range of the stopwatch is 59 minutes, 59.99 seconds.
- The stopwatch continues to run, restarting from zero after it reaches its limit, until you stop it.
- The stopwatch measurement operation continues even if you exit the Stopwatch Mode.
- Exiting the Stopwatch Mode while a split time is frozen on the display clears the split time and returns to elapsed time measurement.
- All of the operations in this section are performed in the Stopwatch Mode, which you enter by pressing (C).

### To measure times with the stopwatch



- The time on the screen may not appear to stop immediately when you press a button to stop timing or to perform a split operation. Despite this, the time recorded by your button operation is accurate.

## Reference

This section contains more detailed and technical information about watch operation. It also contains important precautions and notes about the various features and functions of this watch.

### Auto Display



Auto Display continually changes the contents of the digital display.

#### To turn off Auto Display

Press any button (except for **L**) to turn off Auto Display.

#### To turn on Auto Display

In the Timekeeping Mode, hold down **C** for about three seconds until the watch beeps.

- Note that Auto Display cannot be performed while a setting screen is on the display.

### Auto Return Features

If you leave a screen with flashing digits on the display for two or three minutes without performing any operation, the watch automatically saves any settings you have made up to that point and exits the setting screen.

### Scrolling

The **B** and **D** buttons are used in various modes and setting screens to scroll through data on the display. In most cases, holding down these buttons during a scroll operation scrolls at high speed.

### Initial Screens

When you enter the World Time Mode, the data you were viewing when you last exited the mode appears first.

### Timekeeping

- Resetting the seconds to **00** while the current count is in the range of 30 to 59 causes the minutes to be increased by 1. In the range of 00 to 29, the seconds are reset to **00** without changing the minutes.
- The year can be set in the range of 2000 to 2039.
- The watch's built-in full automatic calendar makes allowances for different month lengths and leap years. Once you set the date, there should be no reason to change it except after you have the watch's battery replaced.

### World Time

- The seconds count of the World Time is synchronized with the seconds count of the Timekeeping Mode.
- The current time in all World Time Mode cities is calculated in accordance with the Greenwich Mean Time (GMT) differential for each city, based on the current Home City time setting in the Timekeeping Mode.
- The GMT differential is the time difference of the time zone where the city is located from Greenwich Mean Time.
- GMT differential is calculated by this watch based on Universal Time Coordinated (UTC) data.

### Auto Time Display Precautions

More than 15 degrees too high



- The watch may not display the current time if its face is more than 15 degrees above or below parallel. Make sure that the back of your hand is parallel to the ground.
- The watch returns to the Animation Mode in about three seconds, even if you keep the watch pointed towards your face.
- Static electricity or magnetic force can interfere with proper auto time display. If the watch does not display the current time automatically, try moving the watch back to the starting position (parallel with the ground) and then tilt it back toward you again. If this does not work, drop your arm all the way down so it hangs at your side, and then bring it back up again.

- Under certain conditions, the watch may not display the current time until about one second after you turn the face of the watch towards you. This does not necessarily indicate malfunction.
- You may notice a very faint clicking sound coming from the watch when it is shaken back and forth. This sound is caused by mechanical operation of auto time display, and does not indicate a problem with the watch.

### Backlight Precautions

The backlight uses an EL (electro-luminescent) panel that causes the entire display to glow for easy reading in the dark. In any mode, press **L** to illuminate the display for about two seconds.

- The electro-luminescent panel that provides illumination loses power after very long use.
- The illumination provided by the backlight may be hard to see when viewed under direct sunlight.
- The watch may emit an audible sound whenever the display is illuminated. This is due to vibration of the EL panel used for illumination, and does not indicate malfunction.
- The backlight automatically turns off whenever an alarm sounds.
- Frequent use of the backlight shortens the battery life.

## City Code Table

City Code	City	GMT Differential	Other major cities in same time zone
PPG	PAGO PAGO	-11	
HNL	HONOLULU	-10	PAPEETE
ANC	ANCHORAGE	-09	NOME
LAX	LOS ANGELES	-08	SAN FRANCISCO, LAS VEGAS, VANCOUVER, SEATTLE, DAWSON CITY
DEN	DENVER	-07	EL PASO, EDMONTON
CHI	CHICAGO	-06	HOUSTON, DALLAS/FORT WORTH, NEW ORLEANS, MEXICO CITY, WINNIPEG
NYC	NEW YORK	-05	MONTREAL, DETROIT, MIAMI, BOSTON, PANAMA CITY, HAVANA, LIMA, BOGOTA
CCS	CARACAS	-04	LA PAZ, SANTIAGO, PORT OF SPAIN
RIO	RIO DE JANEIRO	-03	SAO PAULO, BUENOS AIRES, BRASILIA, MONTEVIDEO
LON	LONDON	+00	DUBLIN, LISBON, CASABLANCA, DAKAR, ABIDJAN
PAR	PARIS	+01	MILAN, ROME, MADRID, AMSTERDAM, ALGIERS, HAMBURG, FRANKFURT, VIENNA, STOCKHOLM
BER	BERLIN	+01	
CAI	CAIRO	+02	ATHENS, HELSINKI, ISTANBUL, BEIRUT, DAMASCUS, CAPE TOWN
JRS	JERUSALEM	+02	
JED	JEDDAH	+03	KUWAIT, RIYADH, ADEN, ADDIS ABABA, NAIROBI, MOSCOW
THR	TEHRAN	+3.5	SHIRAZ
DXB	DUBAI	+04	ABU DHABI, MUSCAT
KBL	KABUL	+4.5	
KHI	KARACHI	+05	MALE
DEL	DELHI	+5.5	MUMBAI, KOLKATA
DAC	DHAKA	+06	COLOMBO
RGN	YANGON	+6.5	
BKK	BANGKOK	+07	JAKARTA, PHNOM PENH, HANOI, VIENTIANE
HKG	HONG KONG	+08	SINGAPORE, KUALA LUMPUR, BEIJING, TAIPEI, MANILA, PERTH, ULAANBAATAR
SEL	SEOUL	+09	
TYO	TOKYO	+09	PYONGYANG
ADL	ADELAIDE	+9.5	DARWIN
SYD	SYDNEY	+10	MELBOURNE, GUAM, RABAUL
NOU	NOUMEA	+11	PORT VILA
WLG	WELLINGTON	+12	CHRISTCHURCH, NADI, NAURU ISLAND

\*Based on data as of December 2002.

## Free Manuals Download Website

<http://myh66.com>

<http://usermanuals.us>

<http://www.somanuals.com>

<http://www.4manuals.cc>

<http://www.manual-lib.com>

<http://www.404manual.com>

<http://www.luxmanual.com>

<http://aubethermostatmanual.com>

Golf course search by state

<http://golfingnear.com>

Email search by domain

<http://emailbydomain.com>

Auto manuals search

<http://auto.somanuals.com>

TV manuals search

<http://tv.somanuals.com>