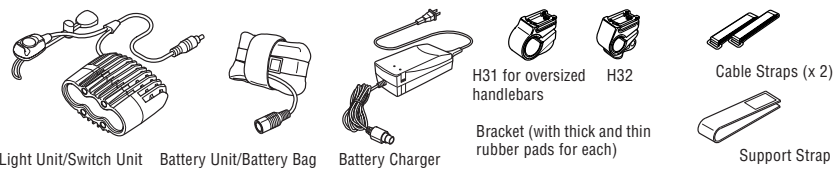


## INTRODUCTION

**!** Before using the light, please thoroughly read this manual and keep it for future reference.

Thank you for purchasing the CATEYE TRIPLE SHOT HL-EL 700RC. The Triple Shot light uses high-power white LEDs, and has a much longer operating life than other high-power rechargeable systems.

## COMPONENTS



## FOR SAFE OPERATION

- Never short-circuit the terminals of the battery unit or the battery charger. It may cause the unit to overheat, resulting in fire or damage to the component.
- Securely connect the plug so that the cable will not come unplugged or hinder your riding.
- Never use damaged components (e.g., cables, etc.). Send any damaged components to our customer service department for repair.
- The light unit may become extremely hot when on or immediately after it is turned off. Please use with caution.
- Do not place it within children's reach.
- We recommend carrying a flashlight or spare battery unit with you in case the main battery dies.
- Charge the battery unit before using because the unit self-discharges over time, decreasing its voltage.
- Do not leave the battery overly discharged because it shortens the operating life of the battery. Try to charge the battery unit after each use. ("Overly discharged" refers to the state the battery is in when used over a period of time while below the specified cutoff voltage.)
- If the lamp body or parts become dirty with mud, etc., clean with a soft cloth which is moistened with mild soap. Never apply paint thinner, benzine or alcohol; damage will result.
- Place the battery unit at least 10 cm away from any wireless meter, as transmitting and receiving performance may be adversely affected.
- Never disassemble the light unit, battery unit, or battery charger.
- This product is water-resistant under normal weather conditions of rain, etc. However, do not intentionally submerge it in water or allow rainwater to enter the battery bag.

## Before Initial Use

The battery is shipped with a small charge, that is used to test the unit at the factory. As such, it is necessary to charge the battery before initial use. (Refer to the "How to Charge" section in this manual.)

## HOW TO MOUNT

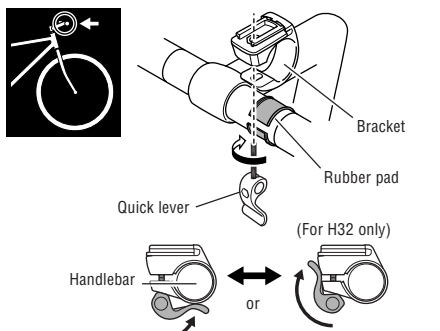
### Installing Bracket

Attach bracket H31 or H32 to the handlebar.

**NOTE:** Select H31 for oversized handlebars.

1. Mount a rubber pad and the bracket onto the handlebar. 2 thicknesses of rubber pads are supplied; if necessary, cut the rubber pad to fit.
2. Tighten and then close the lever to secure it. Make sure the bracket does not rotate on the handlebar.

**CAUTION!** Be sure to adjust the angle of the light's beam by referring to the "How to Adjust Beam Angle" section in this manual before operating the lighting system.



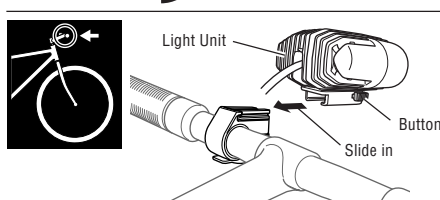
### Mounting Light Unit/Switch Unit

#### Mounting Light Unit

Mount the light unit onto the bracket.

To remove unit after use, pull it out while pressing the button on the bracket.

**CAUTION!** Make sure the light unit is cool to the touch before removing it.

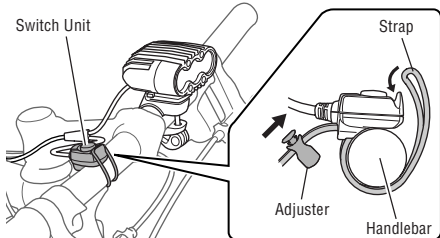


#### Mounting Switch Unit

Mount the switch unit onto the handlebar.

**CAUTION!** Mount the switch unit where it does not interfere with the handling of the bicycle. Make sure that it is securely mounted.

1. Adjust the length of the strap with the toggle and wrap the strap under the bar, hooking it on the switch unit. Make sure the switch unit does not move around easily.



### Installing Battery Unit

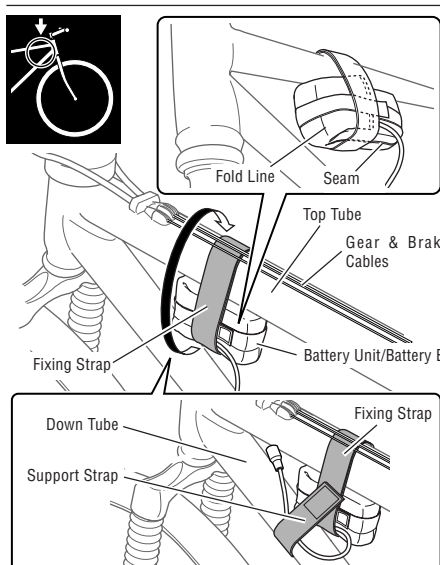
Install the battery unit. If the battery unit has been taken out of the battery bag, refer to the "How to Charge Battery Unit" section in this manual and check for the correct arrangement of the cable and its storage state.

**CAUTION!** When mounting the unit, make sure that the seam of the battery bag is facing down and the fold line is in front. Wind the fixing strap around the center of the battery unit.

1. Wrap the fixing strap around the top tube to secure the unit. **CAUTION!** Wrap the strap over the top tube but under the gear and brake cables. Wrapping the strap over the cables is dangerous as it may interfere with braking and gear shifting.

2. Use the support strap to secure the battery unit to the down tube to prevent it from rolling.

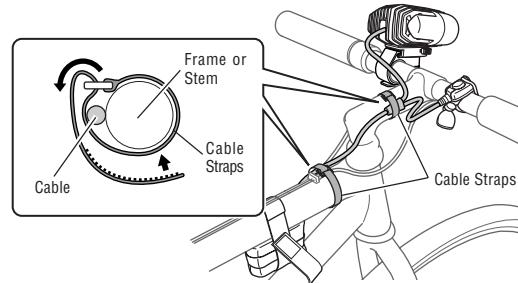
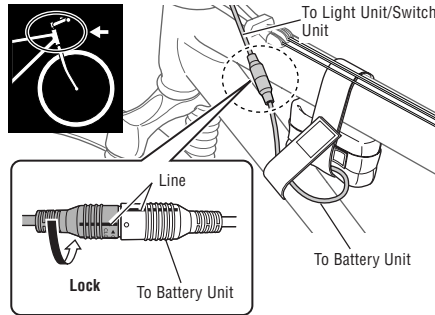
**NOTE:** The battery can also be mounted on alternate positions on the bicycle. However, please make sure that the seam of the battery bag is facing down, and the fold line is in front. This will help prevent any water from entering the bag.



## Connecting and Securing Cables

1. Align the male and female cable ends and connect them. Turn the plugs so that they are securely locked. Fix the cables to your frame and/or stem to keep them secured.

**CAUTION!** Pay attention to the arrangement of the cable so that it does not interfere with the handling of the bicycle. Do not secure the cable at an acute angle because the wire inside the cable may break.

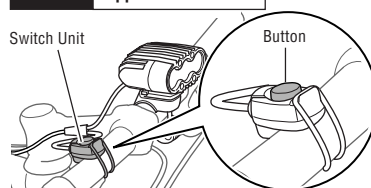


## HOW TO USE

### Switching on/off

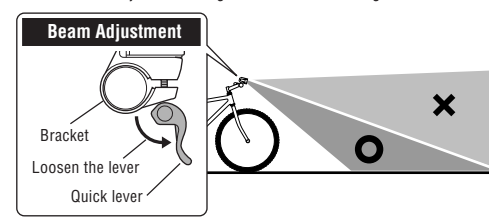
To switch the light on/off, press the button on the switch unit.

**Run time** Approx. 3.3 hours



### How to Adjust Beam Angle

Adjust the beam angle downward so as not to blind oncoming traffic. It can also be adjusted 10 degrees to the left and right.



### How to Charge Battery Unit

#### Important!

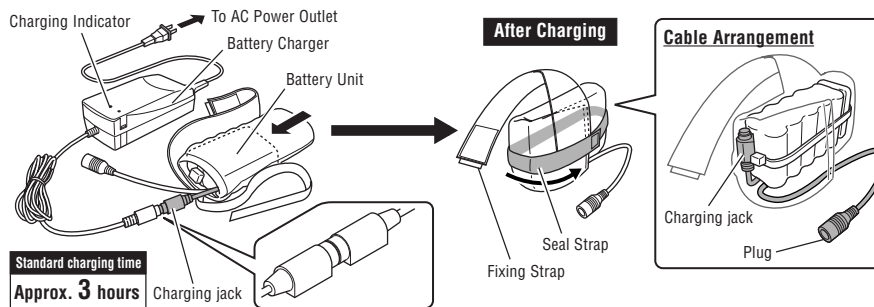
- Be sure to use only the supplied battery charger. This charger can accept 100-240 volts.
- Do not completely remove the battery unit from the battery bag.
- After charging, return the battery to its original storage state. Do not allow water to enter the battery bag.
- The standard charging time and run time are guideline values and depend on the operating environment.
- If the battery unit repeatedly does not meet the proper run time even though it is fully charged, it might be at the end of its operating life. Replace the old battery unit with a new one. The used battery unit should be disposed of properly according to local regulations.

#### Charging indicator state

Orange Light : Connected to power source  
Blinking Red Light : Charging  
Green Light : Charging is completed

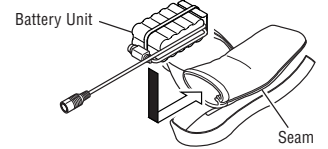
1. Remove the battery bag from your bicycle and open the bag.
  2. Connect the jack to the battery charger.
  3. Plug the battery charger to an AC outlet.
- NOTE:** When charging is complete, the indicator light changes from flashing red to green.
4. When charging is complete, unplug the charging adapter. Refer to the figures below to rearrange the cable and use the seal strap to tightly close the opening.

**CAUTION!** When securing the battery to the frame, make sure the fixing strap attaches to the center of the battery unit.



### How to Store Battery Unit

The battery unit is stored in its bag as shown in the figure. In case the battery unit is out of its bag, be sure to return it to its original state. Otherwise, rainwater may enter the bag, leading to problems with the unit.



## SPARE PARTS

The following spare parts are available.

**CAUTION!** Use only genuine spare parts from CATEYE.



## SPECIFICATIONS

Light Source ----- Three High-Power White LEDs  
Battery Unit ----- Nickel hydride battery (NI-MH/12V 2700mAh)  
Battery Charger ----- CHR-2700(AC100V-240V 50/60Hz 0.5A)  
Operating Time ----- Approx. 3.3 hours  
Standard charging time - Approx. 3 hours  
Temperature range ----- Charging: -10°C - 40°C  
Operating: -15°C - 45°C  
Recharge/discharge number of times ----- About 300 times (until the rated capacity drops to 50%)

\* The specifications and design are subject to change without notice.

## LIMITED WARRANTY

**2-year Warranty : Light/Switch Unit, Battery Unit, Battery Charger (Excluding degradation of the battery unit)**

If trouble or damage occurs during normal use, the product will be repaired or replaced free of charge. Type your name, address, date of purchase and the situation of trouble clearly on the warranty certificate, and send it back to the appropriate service center together with the product. Insurance, handling and transportation charges shall be borne by the customer. After being repaired or replaced, the product will be shipped back to the customer.

### CATEYE CO., LTD.

2-8-25, Kuwazu, Higashi Sumiyoshi-ku, Osaka 546-0041 Japan  
Attn: CATEYE Customer Service Section  
Phone : (06)6719-6863  
Fax : (06)6719-6033  
E-mail : support@cateye.co.jp  
URL : http://www.cateye.co.jp

### Service & Research Address for USA

CATEYE Service and Research Center  
1705 14th St. 115 Boulder, CO 80302  
Phone : 303.443.4595  
Toll Free : 800.5CATEYE  
Fax : 303.473.0006  
E-mail: service@cateye.com  
URL: http://www.cateye.com

## Free Manuals Download Website

<http://myh66.com>

<http://usermanuals.us>

<http://www.somanuals.com>

<http://www.4manuals.cc>

<http://www.manual-lib.com>

<http://www.404manual.com>

<http://www.luxmanual.com>

<http://aubethermostatmanual.com>

Golf course search by state

<http://golfingnear.com>

Email search by domain

<http://emailbydomain.com>

Auto manuals search

<http://auto.somanuals.com>

TV manuals search

<http://tv.somanuals.com>