



# CATEYE VELO5 CATEYE VELO8

## CYCLOCOMPUTER Model CC-VL510/CC-VL810

ENG



U.S. Pat. Nos. 4642606, 5236759 and Pat. Pending  
Copyright©2007 CATEYE Co., Ltd.  
CCVL51/81-070105 066600560 3

Before using the computer, please thoroughly read this manual and keep it for future reference.

- Caution**
- Do not concentrate on the computer operations while riding. Always be sure to ride safely.
  - Be sure to securely mount the magnet, sensor and bracket on your bicycle, and periodically check to see if any parts have loosened.
  - Used batteries are harmful if swallowed by mistake. They must be disposed in accordance with local regulations.
  - Do not leave the main unit exposed to direct sunlight. Never disassemble the main unit.
  - For cleaning of the main unit or accessories, use diluted neutral detergent on a soft cloth, and then wipe it off with a dry cloth. Do not use paint thinner, benzene or alcohol since such chemicals may damage the surface.

- Package Contents**
- 1 Bracket
  - 2 Wire
  - 3 Sensor
  - 4 Magnet
  - 5 Nylon Ties (x 7)

- IMPORTANT!**  
**Correct positions of the sensor and the magnet:**
- A When rotating the front wheel, the magnet's 4 center must be aligned with the sensor's 3 marking line.
  - B The distance between the sensor 3 and the magnet 4 must be less than 5 mm.

- Name of Parts**
- A Speed 0.0 (4.0) to 299.9 km/h [0.0 (3.0) to 185.0 mph]
  - B Mode Symbol Indicates the mode currently selected. (The corresponding value is indicated on the lower line.)
  - C Pace Arrow\* Indicates if the current speed is faster or slower than the average speed. (▲ Faster ▼ Slower)
  - D Speed Scale
  - E Sub Display (selected function)
  - F Battery Case Cover
  - G Contact
- \*The Pace Arrow feature is only available on the VELO8. Pace Arrows are not displayed on the VELO5.

- Display function**
- Tm\* [Elapsed Time] 0:00'00" to 9:59'59"
  - Dst [Trip Distance] 0.00 to 999.99 km [mile]
  - Av\* [Average Speed] 0.0 to 299.9 km/h [0.0 to 185.0 mph] (Measurable up to 27 hrs or 999.99 km/h)
  - Mx [Maximum Speed] 0.0 (4.0) to 299.9 km/h [0.0(3.0) to 185.0 mph]
  - Cal\* [Calorie Consumption] 0.0 to 9999.9 kcal (estimated from speed data)
  - Odo [Total Distance] 0.0 to 9999.9 km [mile]
  - Ck [Clock] 0:00 to 23:59 [1:00 to 12:59]
- \* This feature is only available on the VELO8. No measurement is done on the VELO5.

**Start/Stop of Measuring**  
The unit starts measuring automatically when you start pedaling, and stops measuring when you come to a stop. The upper display always shows the Current Speed.

**Shift of Lower Display**  
Each time you press the MODE button, a different data value appears on the lower line. [E]

**Power Saving Function**  
If the main unit does not receive a signal after about 10 minutes, the main unit enters Power Saving Mode and displays the clock count only. To re turn to normal display, press the MODE button or start your bicycle again to cancel the Power Saving function.

**Data Reset**  
When a screen with the [Reset] mark in the OPERATION FLOW is displayed, continue pressing the MODE button and the measured data will return to zero. However, the Odometer (total distance) and Clock do not return to zero.

**How to Set Clock**  
In the clock mode, press SET button on the back, and the display enters clock setting mode. \* If Km/h has been selected for speed scale, it becomes 24-hour clock. \* If mph has been selected, it becomes 12-hour clock. [F]

**How to Change Tire Size**  
Display the Total Distance (Odo) and press the SET button to change the tire size. You can select a tire size in two ways: Either select from among preset sizes [C] or enter the tire's circumference directly in increments of 1 cm. [D]

- Maintenance**
- If the contact of the unit or the bracket gets wet, dry it off with a cloth. If they become rusty, it will cause speed detection error.
  - If the gaps between the buttons and the unit get clogged with mud or sand, wash them away with water.

**Troubleshooting**

**No display.**  
Has the battery in the main unit run down?  
Replace it with a new one.

**The main unit may still have a charge.**  
Put the battery in backwards to short the unit then install properly and do all clear operation.

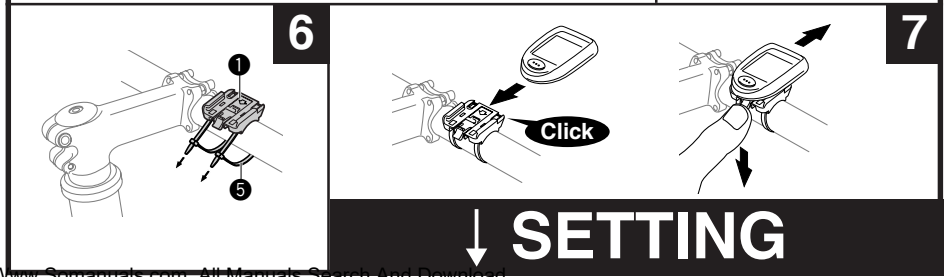
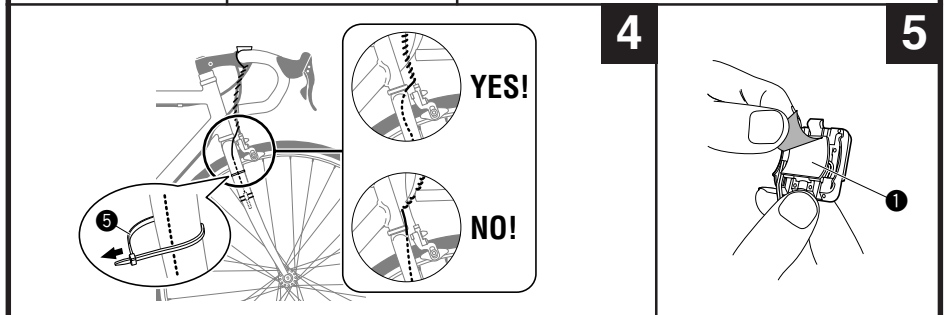
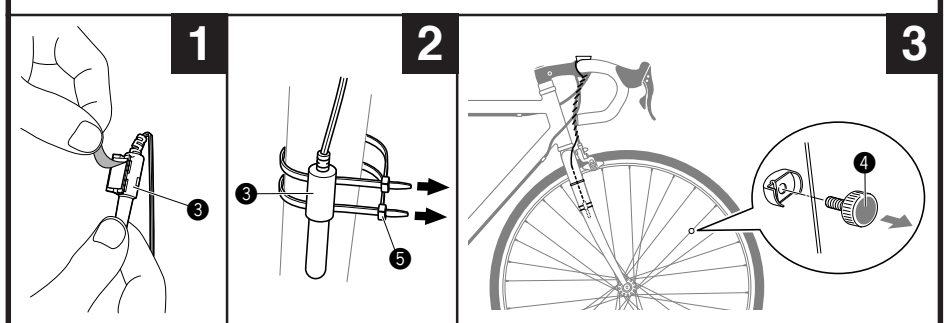
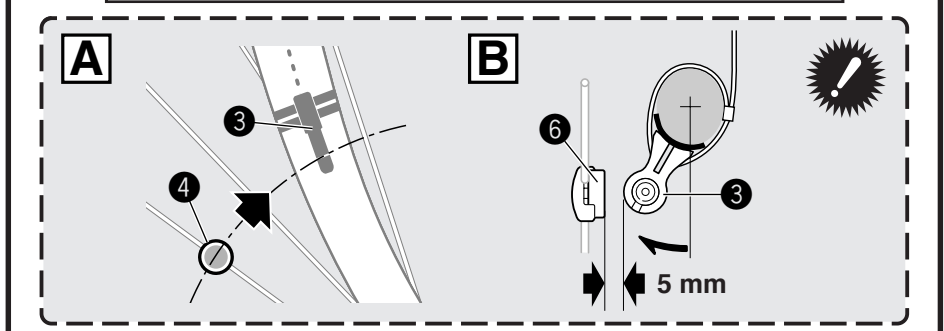
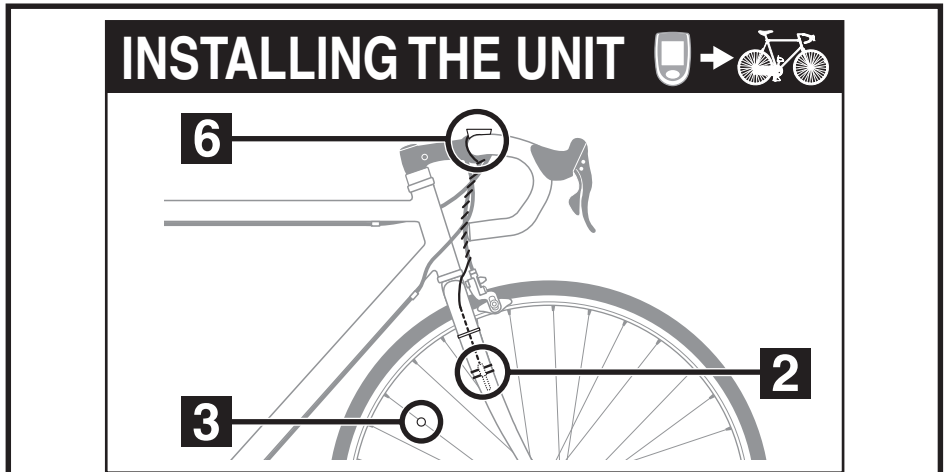
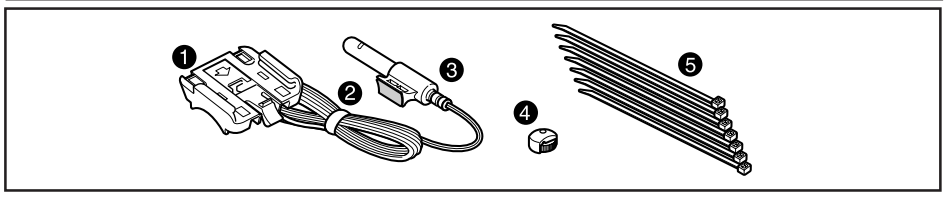
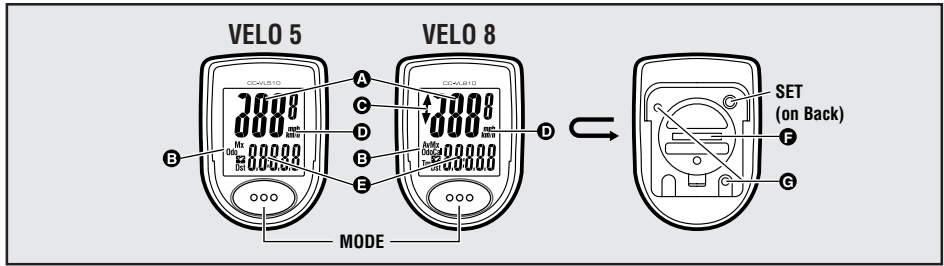
**Incorrect data appears.**  
Do all clear operation.

- Current speed does not appear.** (First, short-circuit the contact of the main unit a few times with a piece of metal. If current speed appears, the main unit is working fine and the cause should be attributed to the bracket or the sensor.)
- Is the clearance between the sensor and the magnet too large?  
Are the magnet's center and the sensor's marking line aligned?  
Re-adjust the positions of the magnet and the sensor. (The clearance should be less than 5 mm.)
  - Is the cord broken?  
Even if the outside of the cord looks normal, there could be damage.  
Replace the bracket and sensor set with a new one.
  - Is there anything sticking on the contact of the main unit or the bracket?  
Clean the contact with a cloth.

**Current speed disappears when using in the rain.**  
Wipe any water or dirt from the contacts and apply a water repellent silicon grease. Do not apply standard grease, as it may cause damage to the bracket.

**Replacing Battery**  
If the screen becomes dim, it is the time to replace the battery. [G]  
\* Insert a new lithium battery (CR2032) with the (+) mark facing up.  
After replacing the battery, perform the all-clear operation. Follow SETTING to select the measurement unit & tire size and set the clock display to the current time.

- Specification**
- Battery ----- Lithium Battery CR2032 x 1 (battery life: approx. 3 years)  
(\*The life of the factory-loaded battery might be shorter than this.)
  - Microcomputer ----- 4-bit 1-chip (Crystal controlled oscillator)
  - Display ----- Liquid crystal display
  - Sensor ----- No-contact magnetic sensor
  - Tire Sizes ----- Tire sizes of 16, 18, 20, 22, 24, 26, 700C, and 27 inches, or tire peripheral lengths from 100 to 299 cm (Initial value: 26 in.)
  - Working Temperature ----- 0 °C - 40 °C
  - Length of Wire ----- 70 cm
  - Dimension/Weight ----- 2-1/16" x 1-1/2" x 45/64" (52.5 x 38 x 18 mm) / 0.95 oz (27 g)
- \* The specifications and design are subject to change without notice.



↓ **SETTING**

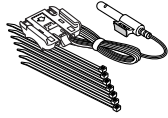
### Calorie Consumption\*1 (VELO8)

The calorie consumption data is only the accumulated value that is calculated from the speed data of every second. It differs from the actual consumed calorie.

km/h			
Speed	10 km/h	20 km/h	30 km/h
Kcal per hour	67.3 kcal	244.5 kcal	641.6 kcal
mph			
Speed	10 mph	20 mph	30 mph
Kcal per hour	155.2 kcal	768.2 kcal	2297.2 kcal

### #169-9550

Bracket Sensor Kit



### #166-5150

Lithium Battery (CR2032)



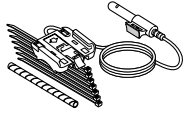
### #169-9691N

Standard Magnet



### #169-9560

Heavy Duty Wire and Bracket Sensor Kit



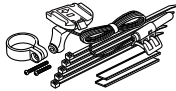
### #169-9302 [#169-9307]

Center Mount Bracket Kit [Long]



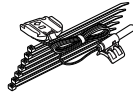
### #169-9303

Bracket Sensor Kit for Aero Bar



### #169-9304

Stem Mount Bracket Kit



### #169-9760

Magnet for Composite Wheel



### LIMITED WARRANTY

#### 2-Year Warranty for Main Unit Only (Accessories/Bracket sensor and Battery Consumption excluded)

CatEye cycle Main units are warranted to be free of defects from materials and workmanship for a period of two years from original purchase. If the product fails to work due to normal use, CatEye will repair or replace the defect at no charge. Service must be performed by CatEye or an authorized retailer.

To return the product, pack it carefully and enclose the warranty certificate (proof of purchase) with instruction for repair. Please write or type your name and address clearly on the warranty certificate.

Insurance, handling and transportation charges to CatEye shall be borne by person desiring service.

For UK and REPUBLIC OF IRELAND consumers, please return to the place of purchase. This does not affect your statutory rights.

(Address for service) **CATEYE CO., LTD.**

2-8-25, Kuwazu, Higashi Sumiyoshi-ku, Osaka 546-0041 Japan  
Attn.: CATEYE Customer Service Section

Service & Research Address for United States Consumers:  
**CATEYE Service & Research Center**

1705 14th St. 115 Boulder, CO 80302  
Phone : 303.443.4595  
Toll Free : 800.5CATEYE  
Fax : 303.473.0006  
E-mail : service@cateye.com  
URL : http://cateye.com

## SETTING

#### All Clear

**SET + MODE**

2 buttons

**PUSH!**

Tm  
Dst  
Av  
Mx  
Cal  
Odo  
Clock

#### Select km/h or mph

**Select km/h**

km/h

mph

SETTING END

---

#### Wheel Size

Tire Size	L (mm)
47-305	14 x 1.75 102
	14 x 1.75 106
	16 x 1.50 119
	16 x 1.75 123
	18 x 1.50 134
	18 x 1.75 135
47-406	20 x 1.75 152
	20 x 1.50 162
	22 x 1.50 177
	22 x 1.12 179
	24 x 1 175
	24 x 3/4 Tubular 179
	24 x 1.18 180
	24 x 1.14 191
	24 x 1.75 189
47-507	24 x 2.20 193
	24 x 2.125 197
	26 x 7/8 192
23-571	26 x 1.00 191
	26 x 1.05 195
	26 x 1.25 195
	26 x 1.18 197
37-590	26 x 1.50 201
	26 x 1.12 210
	26 x 1.40 201
40-559	26 x 1.50 201
47-559	26 x 1.75 202
50-559	26 x 1.95 205
54-559	26 x 2.00 205
57-559	26 x 2.10 207
	26 x 2.125 207
	29 x 2.25 208
	29 x 2.1 217
	27 x 1 215
32-630	27 x 1.18 216
	27 x 1.14 216
	27 x 1.58 217
	50 x 2.00 194
	55 x 2.30 194
	55 x 3.5A 209
	55 x 3.8A 218
	55 x 3.8B 211
18-622	700 x 180 207
	700 x 190 208
20-622	700 x 200 209
23-622	700 x 230 210
25-622	700 x 250 211
28-622	700 x 280 214
	700 x 300 215
32-622	700 x 320 216
	700C Tubular 213
37-622	700 x 350 217
	700 x 380 216
40-522	700 x 400 220
	29 x 2.1 229
	29 x 2.3 233

**Tire Size**  
27" x 1-1/4

26 ▶ 700c ▶ 27 ▶ [205] ▶ 16 ▶ 18 ▶ 20 ▶ 22 ▶ 24

#### Quick Setting Size

27"

START

26 km/h

700c

27 km/h

SETTING END

---

#### Detailed Setting Size

L = 216 (cm)

cm

START

26 km/h

700c

27 km/h

[205]

MODE (2 sec.)

205 km/h

206 km/h

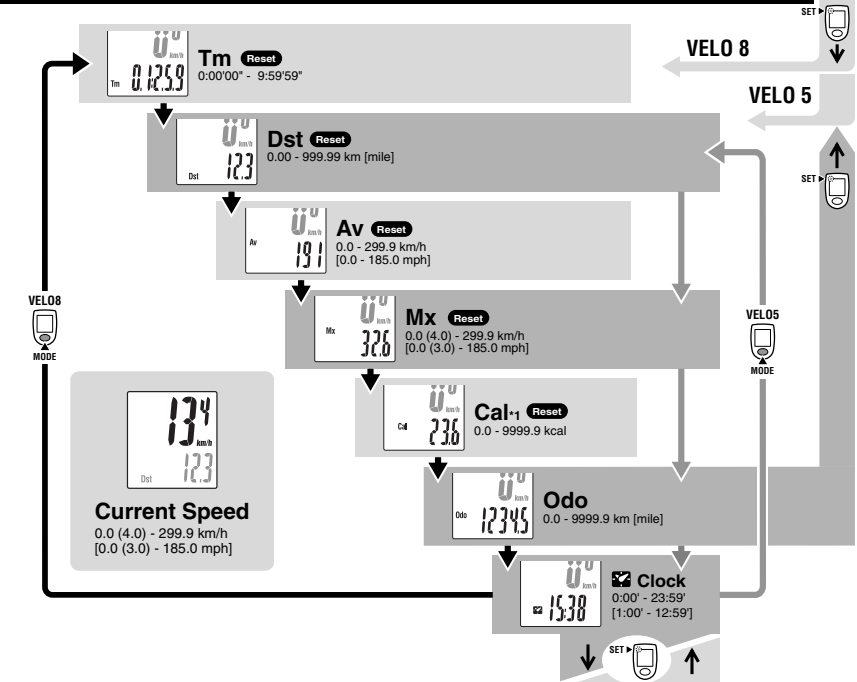
206 km/h

216 km/h

SETTING END

#### OPERATION FLOW

## OPERATION FLOW



#### Data Reset

Reset

MODE (2 sec.)

Tm  
Dst  
Av  
Mx  
Cal

#### BATTERY

Close

Open

CR2032

All Clear

#### Clock Setting

Setting Time

3:10

MODE

3:00 (00-59)

3:10 (00-59)

SETTING END

## Free Manuals Download Website

<http://myh66.com>

<http://usermanuals.us>

<http://www.somanuals.com>

<http://www.4manuals.cc>

<http://www.manual-lib.com>

<http://www.404manual.com>

<http://www.luxmanual.com>

<http://aubethermostatmanual.com>

Golf course search by state

<http://golfingnear.com>

Email search by domain

<http://emailbydomain.com>

Auto manuals search

<http://auto.somanuals.com>

TV manuals search

<http://tv.somanuals.com>