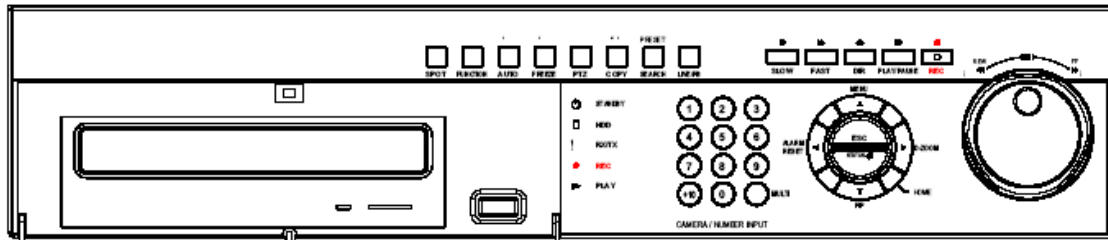


QUICK START GUIDE



DVR-4N

DVR-8N

DVR-16N

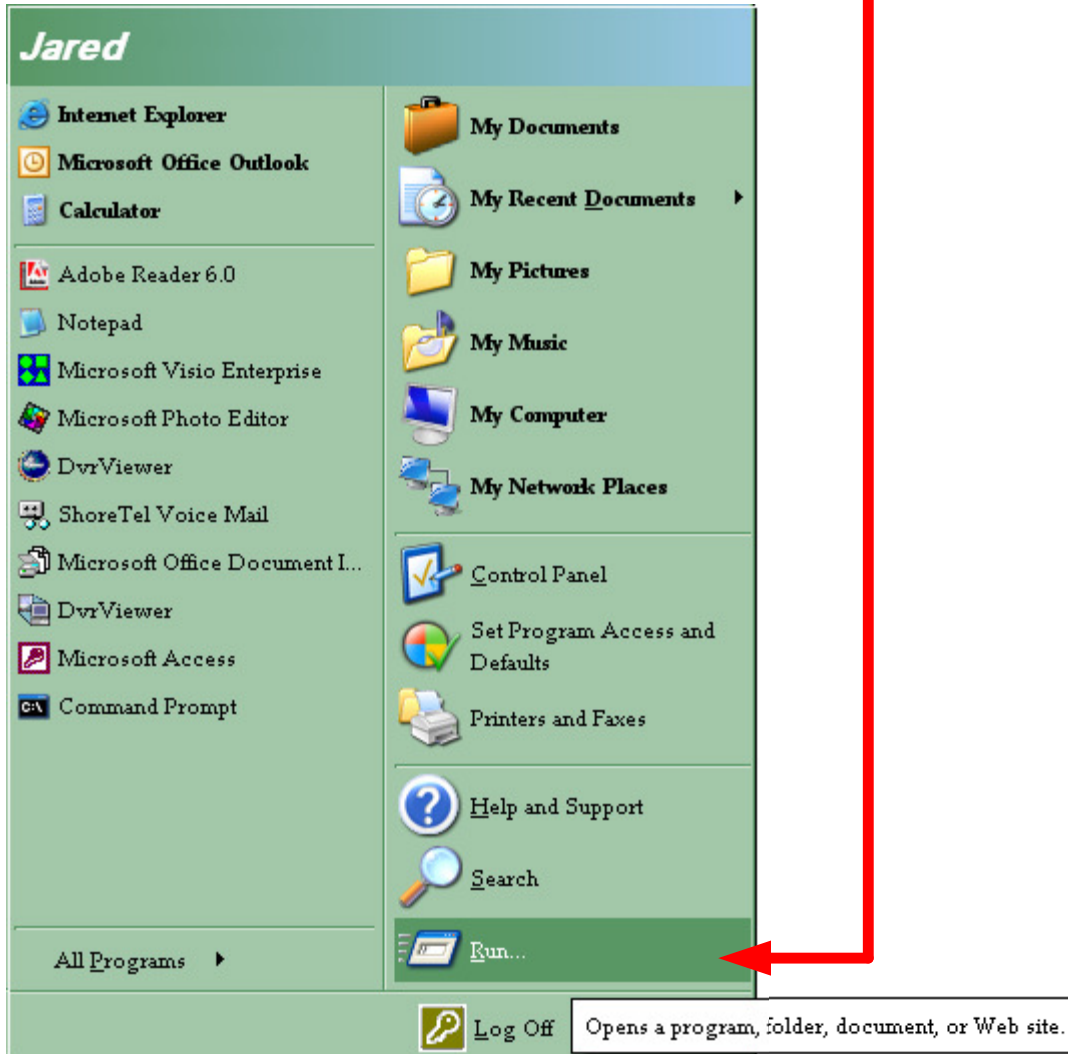
4/8/16 Camera MPEG4 Networkable DVR

 **CHANNEL VISION™**
©2007 CHANNEL VISION TECHNOLOGY

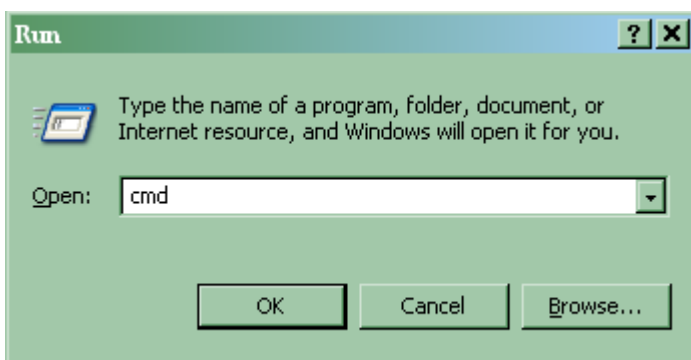
Section 1: Software Setup

Follow Steps:

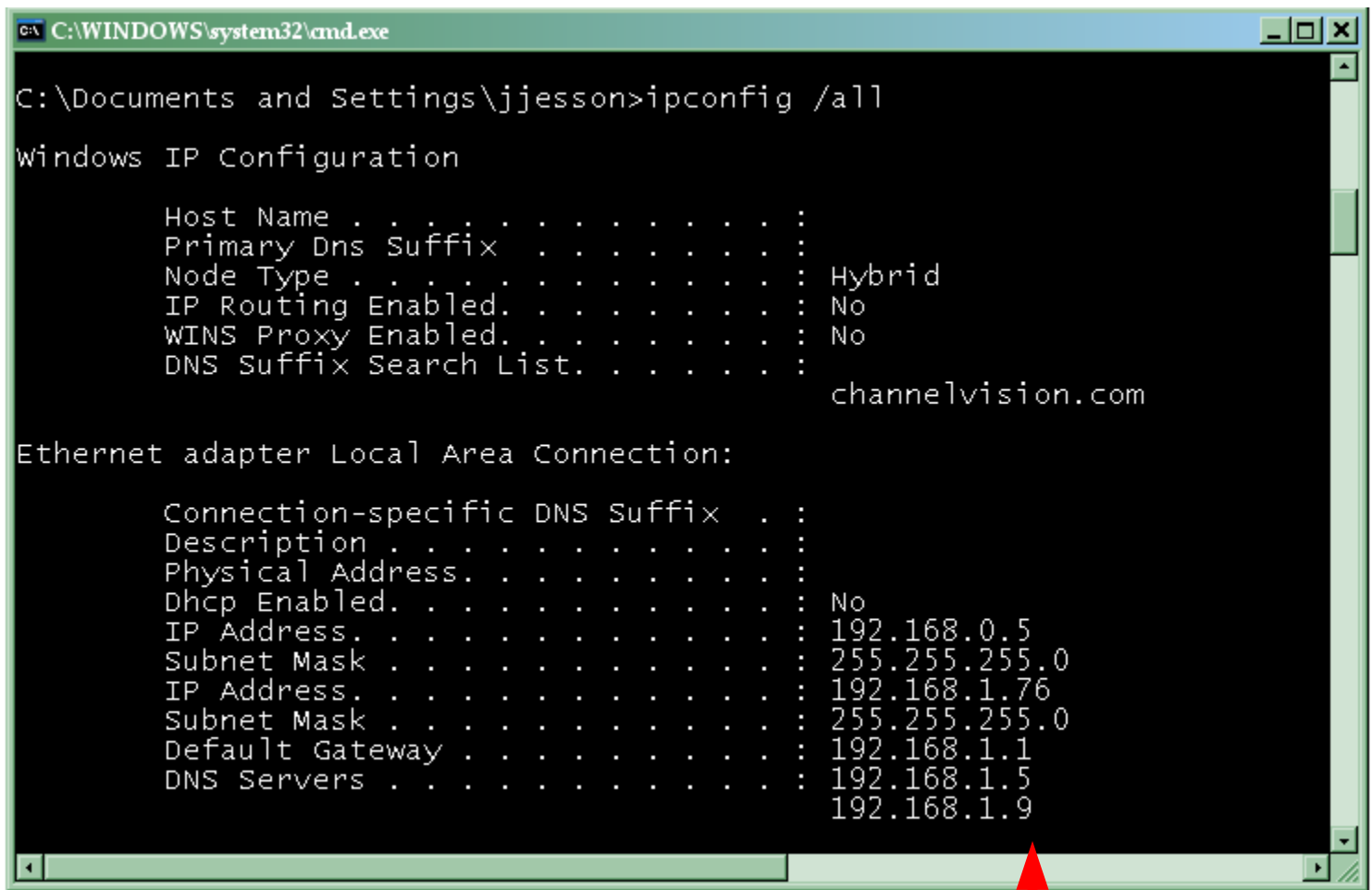
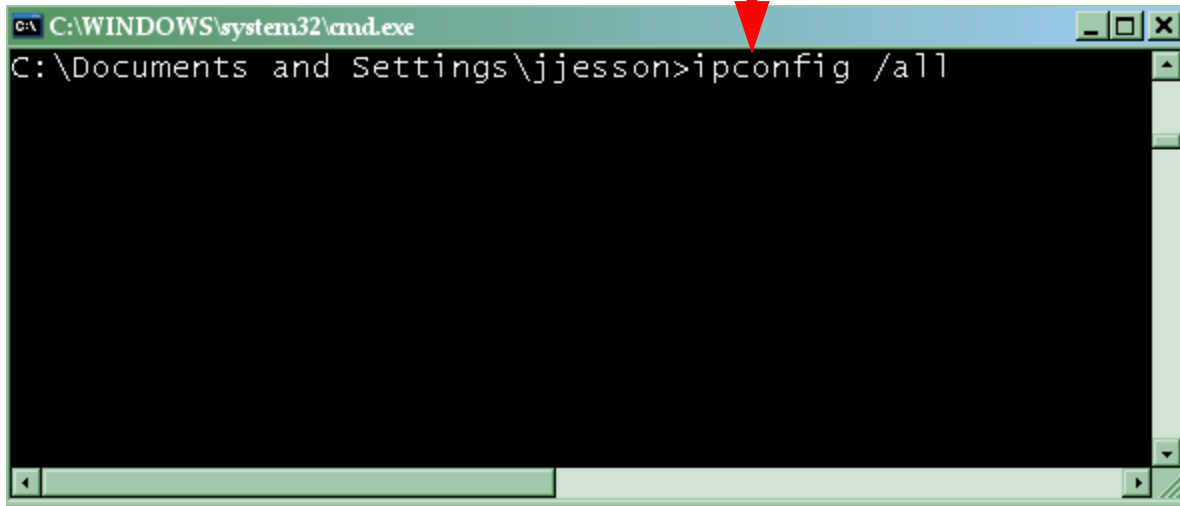
Click on the "Start" menu and click "Run"



Write the word "cmd" or "command" for Windows XP or Vista. Click OK.



Type in ipconfig /all



This is similar to what you will get when you type in ipconfig

Copy this information from your ipconfig /all. (Example on previous page)



IP Address: _____
Default Gateway _____
DNS Server _____ (if 2 servers, use # 1)

Go over to DVR itself, using the composite/monitor output.
Press the Menu button on front of DVR
Scroll to the Symbol that looks like 2 computers.
Copy Info to DVR.
MAKE SURE the IP Address you copied from computer is NOT used. For example, if I copied 192.168.1.120 as the IP Address from my computer, name the

My Computer 192. 168. 1. 12
DVR 192. 168. 1. 15

OR:

My Computer 192. 168. 0. 11
DVR 192. 168. 0. 12
DNS Server 192. 168. 0. 1

(You do not have to use 12 .)

Just make sure the last 3 digits of IP are different than your computer.)

3rd set of digits of DNS Server must match 3rd set of digits of DVR IP



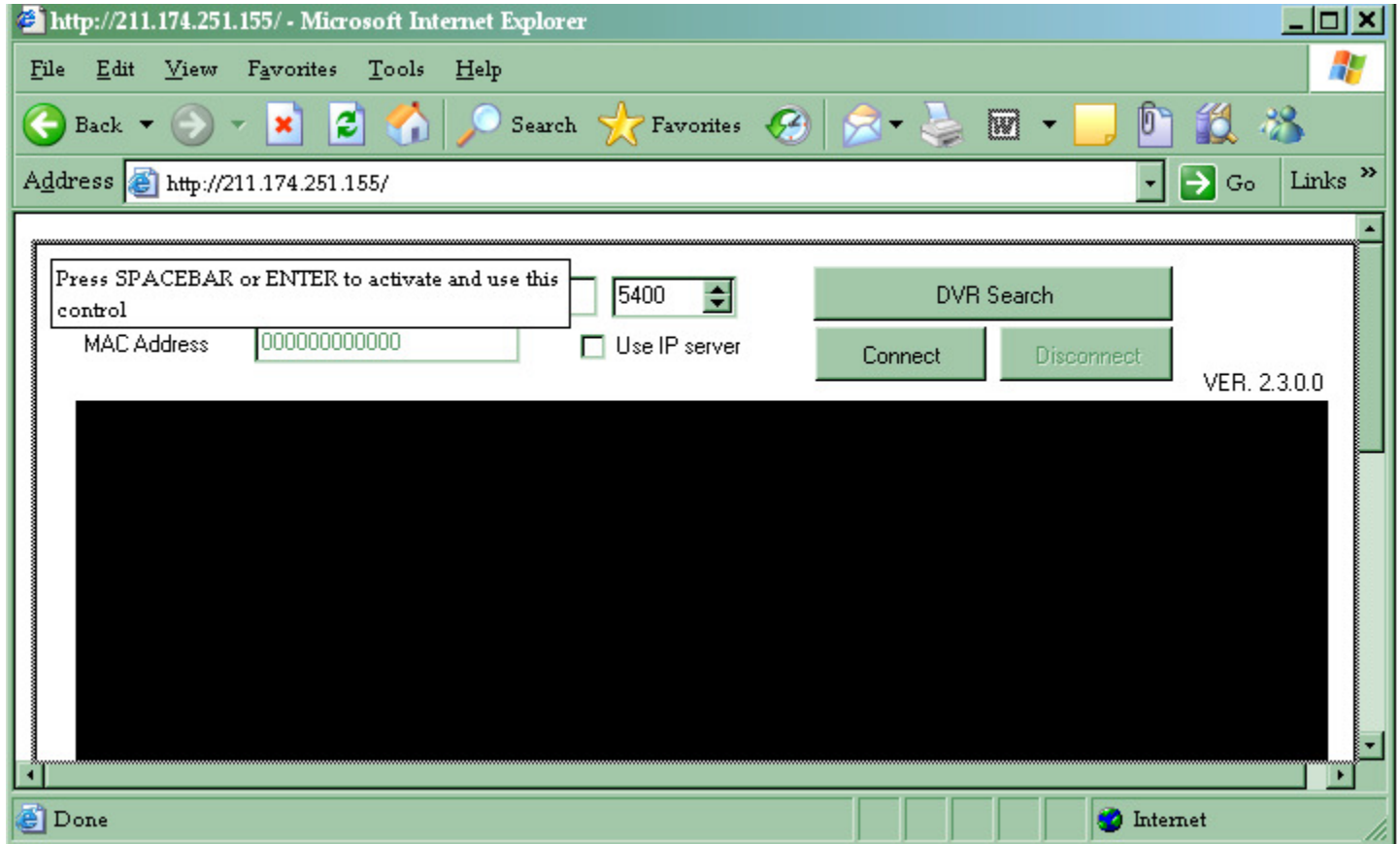
Section 2: Online Viewing.

There are 2 ways to view this online.

1. Internet Explorer (or any browser that uses ActiveX Controls)
2. Software. (DVR Viewer 1.35, 1.45, 1.50, 1.75, 1.84, 1.99)

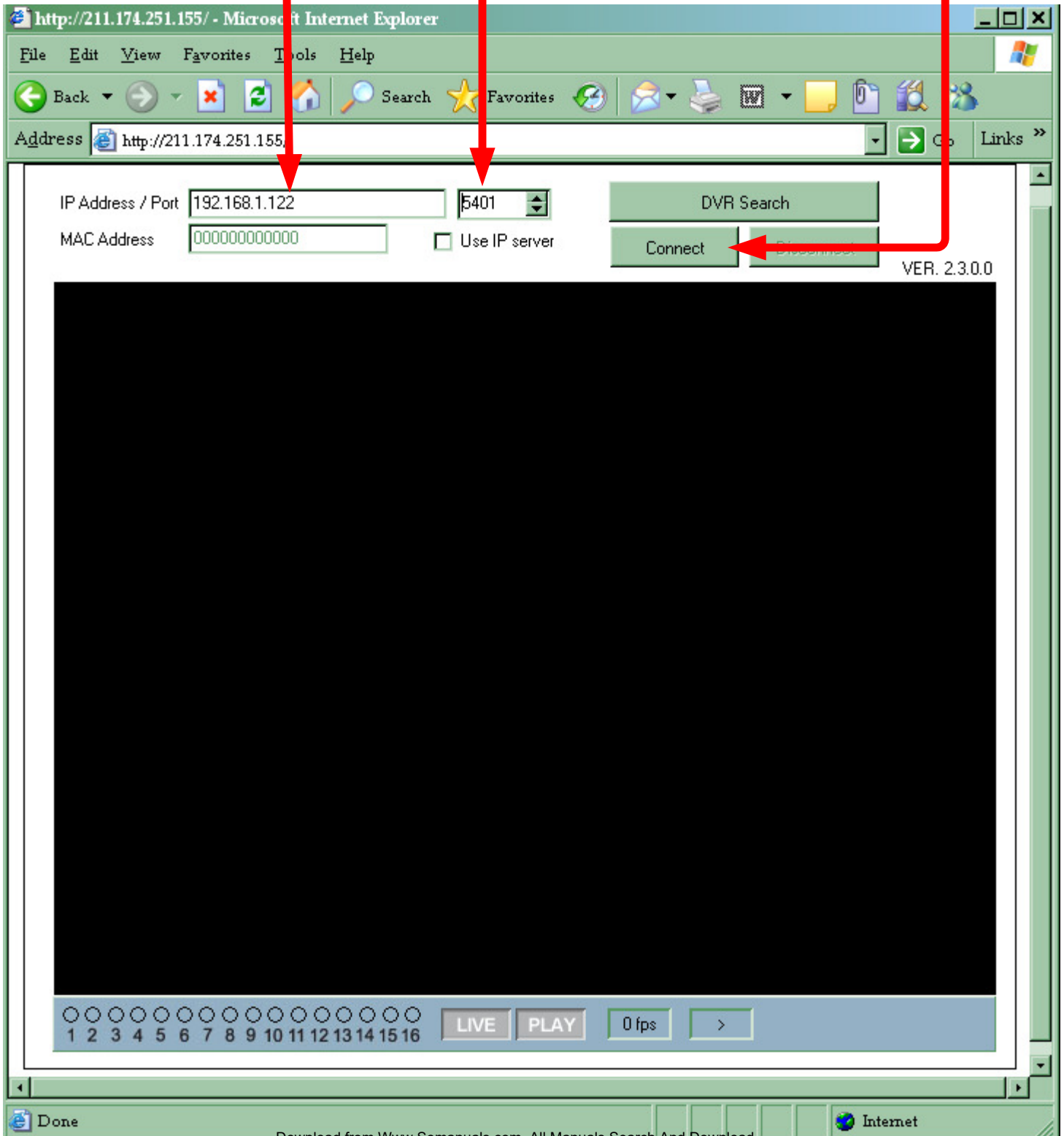
1.) To use Internet Explorer, use this address. [Http://211.174.251.155](http://211.174.251.155)

You will be prompted to install an ActiveX Control. Click install.



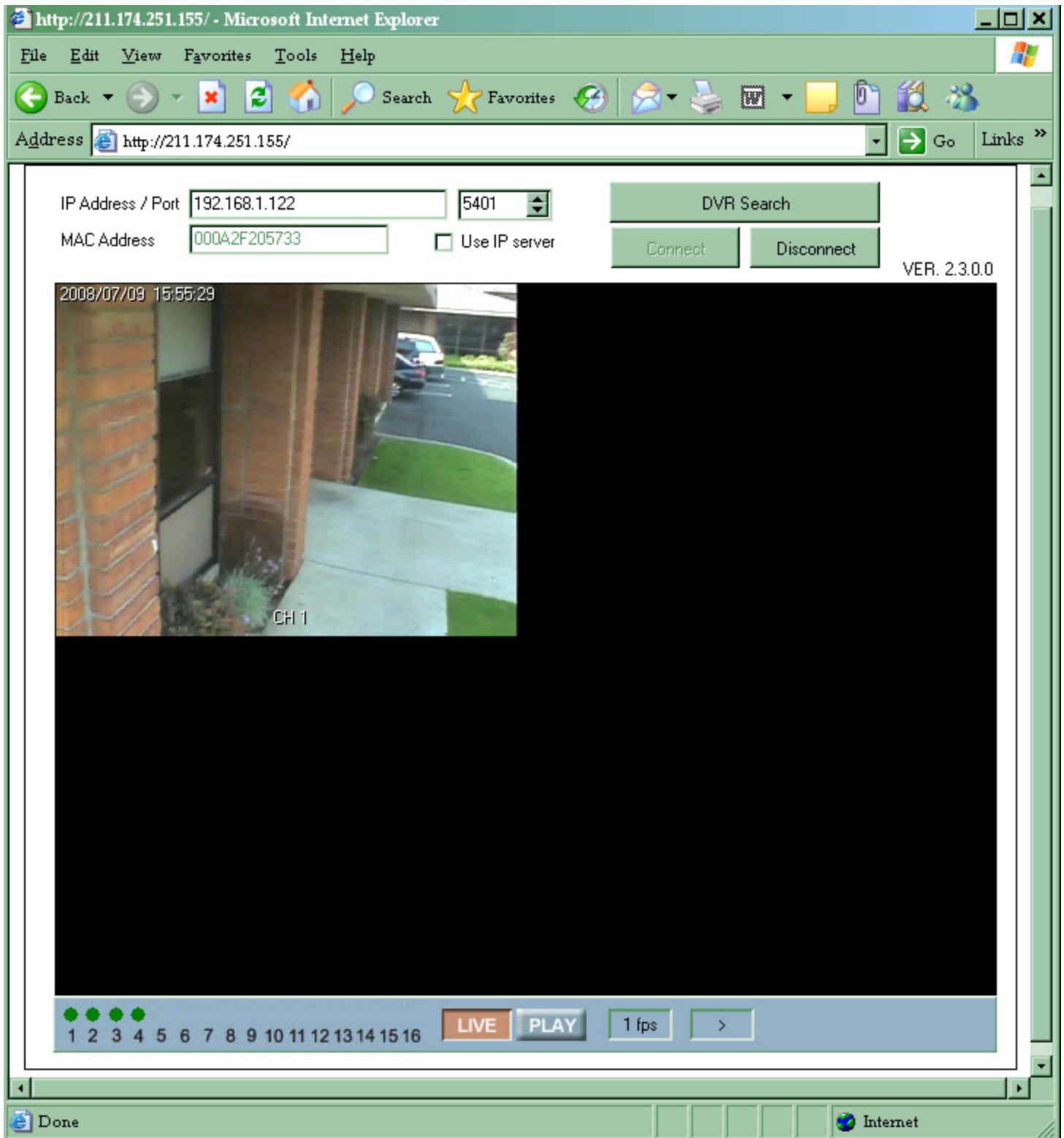
Press "Spacebar" and your keyboard once ActiveX control is installed.

Enter IP Address, and Port number. Click Connect.
When prompted for password, enter password. Factory Default is 8 '1s' all in a row
for master (11111111) or 22222222 for a non-administrator password.
Shown is an internal IP. (192.168.1.122) The Port is 5401



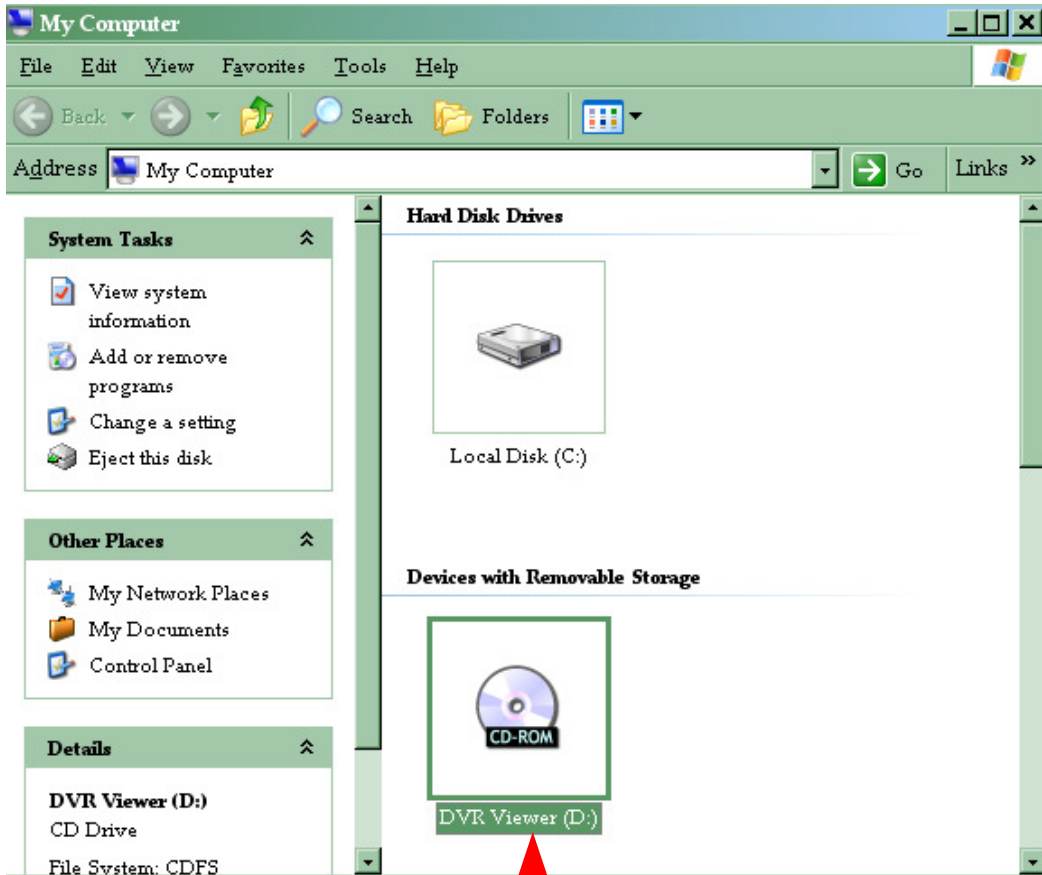
Note: You can only view your cameras in Internet Explorer; you cannot search for events or change settings.

IMPORTANT NOTE: You must contact your router's Technical Support to find out how to forward your DVR's IP to a certain port. If you do not, you can only view the DVR from your location.



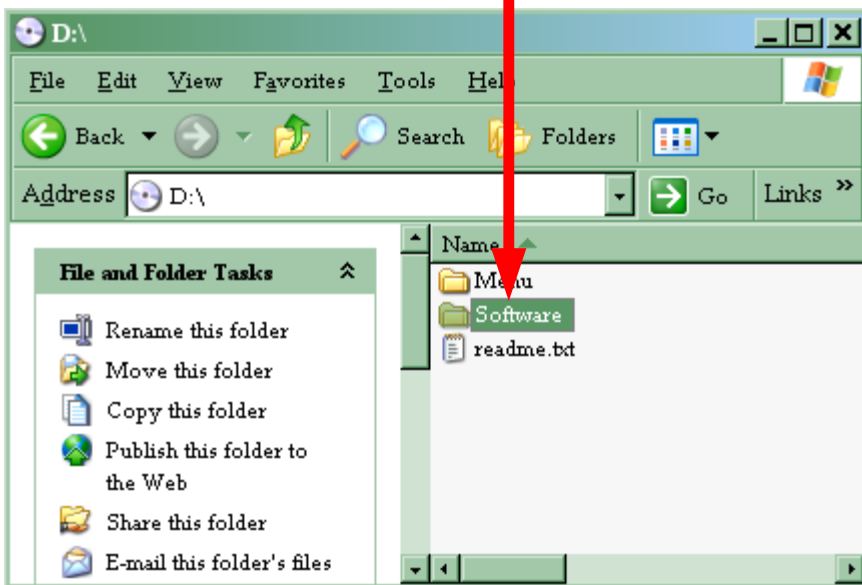
2.) For Software: Follow steps below

- 1. Place DVR CD in CD-Rom Drive
- 2. Double click the My Computer Icon

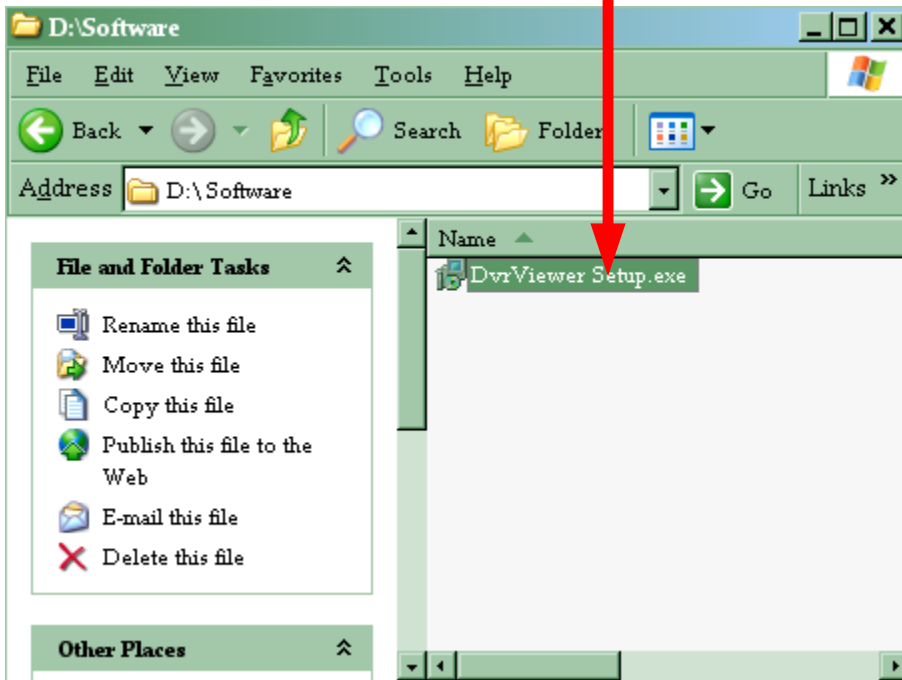


3. Double click the CD-Rom Drive

4. Double Click Software



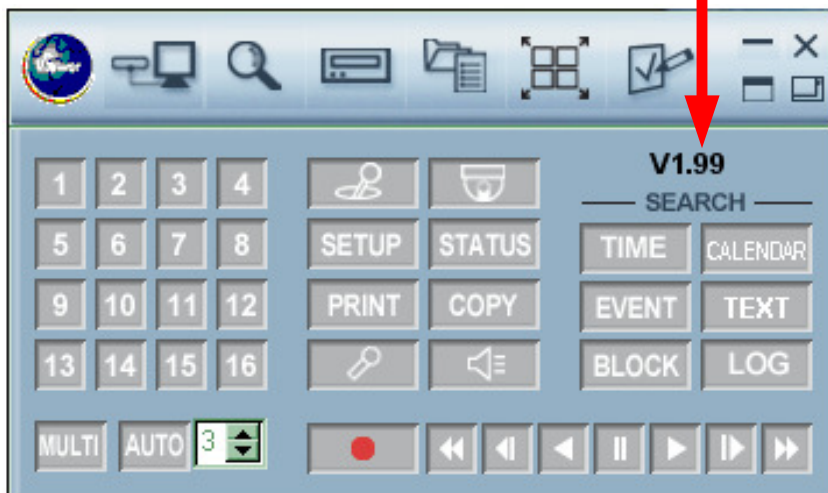
5. Double-Click Setup.exe



6. Install Software.

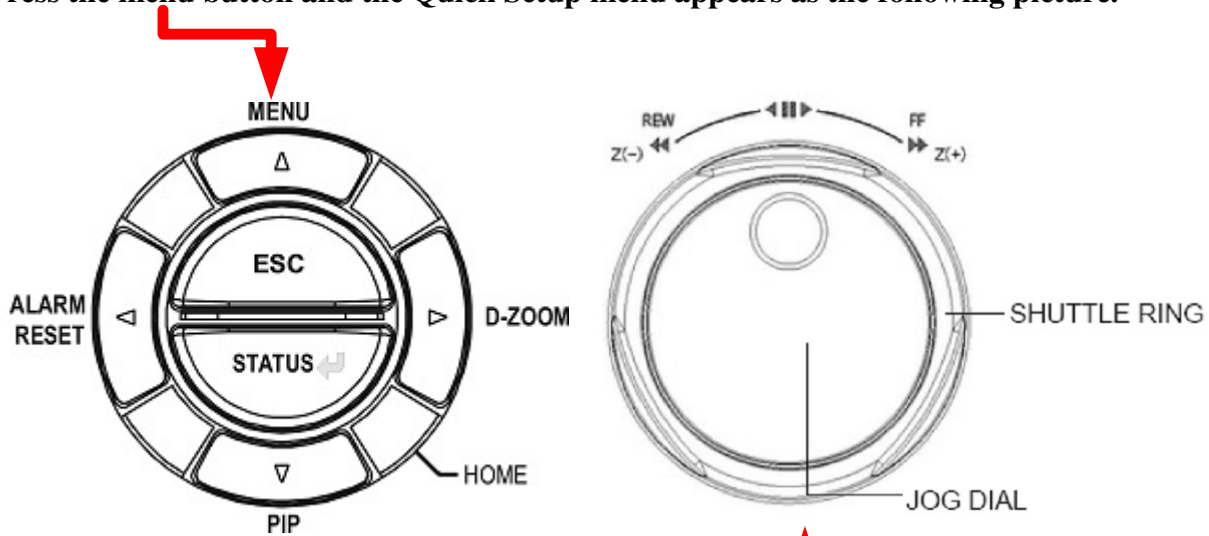
The picture below is what the software looks like once installed.

The software version is listed here



Section 3: Basic DVR configuration

Press the menu button and the Quick Setup menu appears as the following picture.



Turn Quick Setup on, by moving the Jog Dial.

Quick Setup will configure your DVR to record when your camera sees motion.

Change image size to 720x480, as 720x240 is a widescreen image. (Jog Dial)

Make sure you hit "Escape" and "Save And Exit" to save settings.

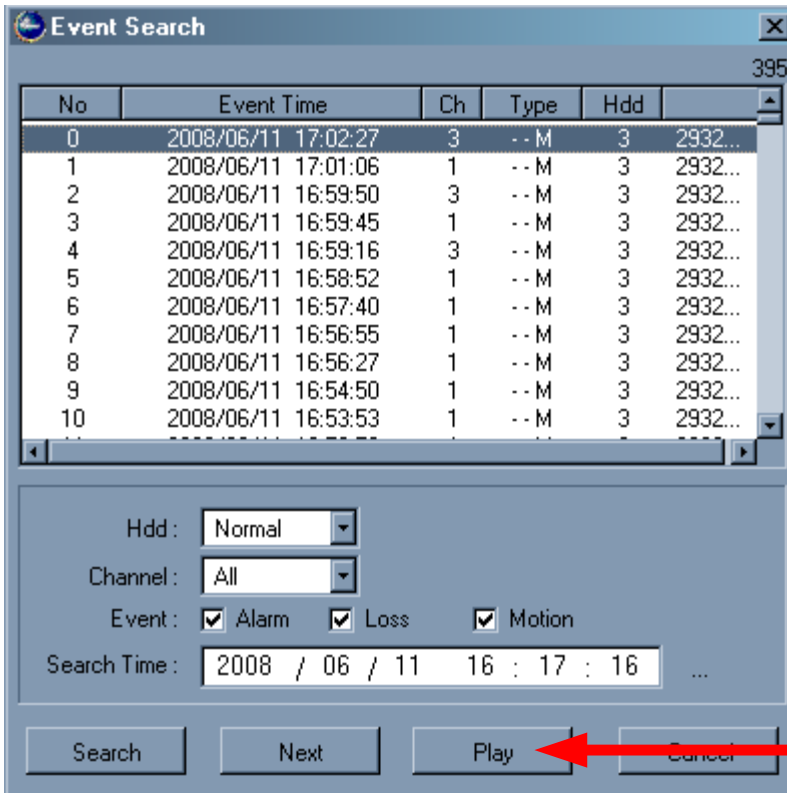


Section 4 Basic Functions of DVR

Search:

1.) On DVR Viewer. See Below.

Select Event, and click 'play'



2.) DVR Itself. See Below. (Copied from manual)

The easiest way to search is by using 'Search and Copy'
Select exact Date & Time. Click *Status/Enter* on front of DVR.

To set up the **SEARCH** menu,

- ① Move the cursor to the SEARCH icon using the ←, → in the MENU screen.
- ② Press the ENTER button when the cursor is on the SEARCH icon and the following items appear.



5.2.4.2 SEARCH & COPY

At the SEARCH menu;

- ① Move the cursor to **SEARCH & COPY** using ↑ or ↓ button.
- ② Press the ENTER button and SEARCH & COPY screen appears.



- ③ Select the desired HDD ID using the (-) or (+) button.
- ④ Move the cursor to CHANNEL using the ↑ or ↓ button and select the desired channel using the (-) or (+) button.
- ⑤ Move the cursor to the desired position of SEARCH TIME using the ↑, ↓, ←, → buttons, and then set up the desired time using the (-), (+) buttons or turn the wheel scroll of mouse to set the search time.
- ⑥ Press the ENTER button and you can playback.
- ⑦ Move the cursor to START COPY and then press the ENTER button to copy.
- ⑧ Press the ESC button to exit this menu.

CHANNEL VISION™

2 Year Limited Warranty

Channel Vision Technology will repair or replace any defect in material or workmanship which occurs during normal use of this product with new or rebuilt parts, free of charge in the USA, for two years from the date of original purchase. This is a no hassle warranty with no mail in warranty card needed. This warranty does not cover damages in shipment, failures caused by other products not supplied by Channel Vision Technology, or failures due to accident, misuse, abuse, or alteration of the equipment. This warranty is extended only to the original purchaser, and a purchase receipt, invoice, or other proof of original purchase date will be required before warranty repairs are provided.

Mail in service can be obtained during the warranty period by calling (800) 840-0288 toll free. A Return Authorization number must be obtained in advance and can be marked on the outside of the shipping carton.

This warranty gives you specific legal rights and you may have other rights (which vary from state to state). If a problem with this product develops during or after the warranty period, please contact Channel Vision Technology, your dealer or any factory-authorized service center.

 CHANNEL VISION™
www.channelvision.com

234 Fischer Avenue, Costa Mesa, California 92626 USA
(714)424-6500 • (800)840-0288 • (714)424-6510 fax
email: techsupport@channelvision.com

Free Manuals Download Website

<http://myh66.com>

<http://usermanuals.us>

<http://www.somanuals.com>

<http://www.4manuals.cc>

<http://www.manual-lib.com>

<http://www.404manual.com>

<http://www.luxmanual.com>

<http://aubethermostatmanual.com>

Golf course search by state

<http://golfingnear.com>

Email search by domain

<http://emailbydomain.com>

Auto manuals search

<http://auto.somanuals.com>

TV manuals search

<http://tv.somanuals.com>