



Managing Modules

This chapter describes the management tasks that can be performed on the modules in the Cisco 12000/10720 internet router being managed using the Cisco 12000/10720 Router Manager application.

The following modules can be managed using the Cisco 12000/10720 Router Manager:

- GRPs
- Line cards—ATM, Ethernet, SRP, POS, DS-3, Fast Ethernet and Gigabit Ethernet
- Supporting modules—CSCs, SFCs, AC or DC power supply modules, fan tray modules, blower modules, alarm modules and bus board

This chapter contains the following sections:

- [Cisco 12000/10720 Router Manager Module Names](#)
- [Launching the Module Management Windows](#)
- [Module Configuration](#)
- [Module Fault Management](#)
- [Module Performance](#) (only available on GRPs)
- [Module Inventory](#)

Cisco 12000/10720 Router Manager Module Names

The naming convention used in Cisco 12000/10720 Router Manager for line cards, GRPs, CSCs, and SFCs is an abbreviated form of the type of module, followed by the slot number of the module. For example, an ATM line card in slot 6 is called A6, and a POS line card in slot 3 is called P3.

[Table 5-1](#) identifies each module type and its respective abbreviation in Cisco 12000/10720 Router Manager.

Table 5-1 Abbreviated Module Names

Module	Cisco 12000/10720 Router Manager Abbreviation
DS-3	D
POS	P
ATM	A

Table 5-1 Abbreviated Module Names (continued)

Module	Cisco 12000/10720 Router Manager Abbreviation
Fast Ethernet	FE
Gigabit Ethernet	GE
SRP	S
Unrecognized Modules*	GM (Generic Module)
GRP	RP
CSC	C
SFC	SF
Lower Blower	LBM
Upper Blower	UBM
Power Supply	PSM
Alarm	ALR

*Note that basic module management services are provided for any non-standard Cisco 12000/10720 Router Manager modules.

Launching the Module Management Windows

Table 5-2 displays the Module Management windows that can be launched from each object type. For example, the Module Fault Management window can be launched from a Site, Chassis or Module object, but cannot be launched from an Interface object.



Note Table 5-2 lists the menu options to launch the module management dialogs from the site level.

Table 5-2 Launching the Module Management Windows

Cisco 12000/10720 Router Manager Window/Task	Objects to Select to Open the Window					Menu Options to Select to Open Window
	Site	Chassis		Module	Interface	
		12000 series	10720			
Module Configuration	Yes	Yes	Yes	Yes	No	Cisco 12000/10720 Manager>Configuration>Module >Configuration
Module Fault Management	Yes	Yes	Yes	Yes	No	Cisco 12000/10720 Manager>Fault>Module>Fault Management
Module Performance	Yes	Yes	Yes	No	No	Cisco 12000/10720 Manager>Performance>Module> Performance
Module Inventory	Yes	Yes	Yes	Yes	No	Cisco 12000/10720 Manager>Accounting>Module>Inventory

**Note**

Cisco 12000/10720 Router Manager windows cannot be opened when multiple objects are selected (the menu options to open the Cisco 12000/10720 Router Manager windows are grayed out). Available menu options can be launched from a site object containing the required objects, when needed.

Module Configuration

The Configuration window allows you to commission or decommission any module. You can also provide text descriptions of the specific module, if required.

The Module Configuration section provides the following information:

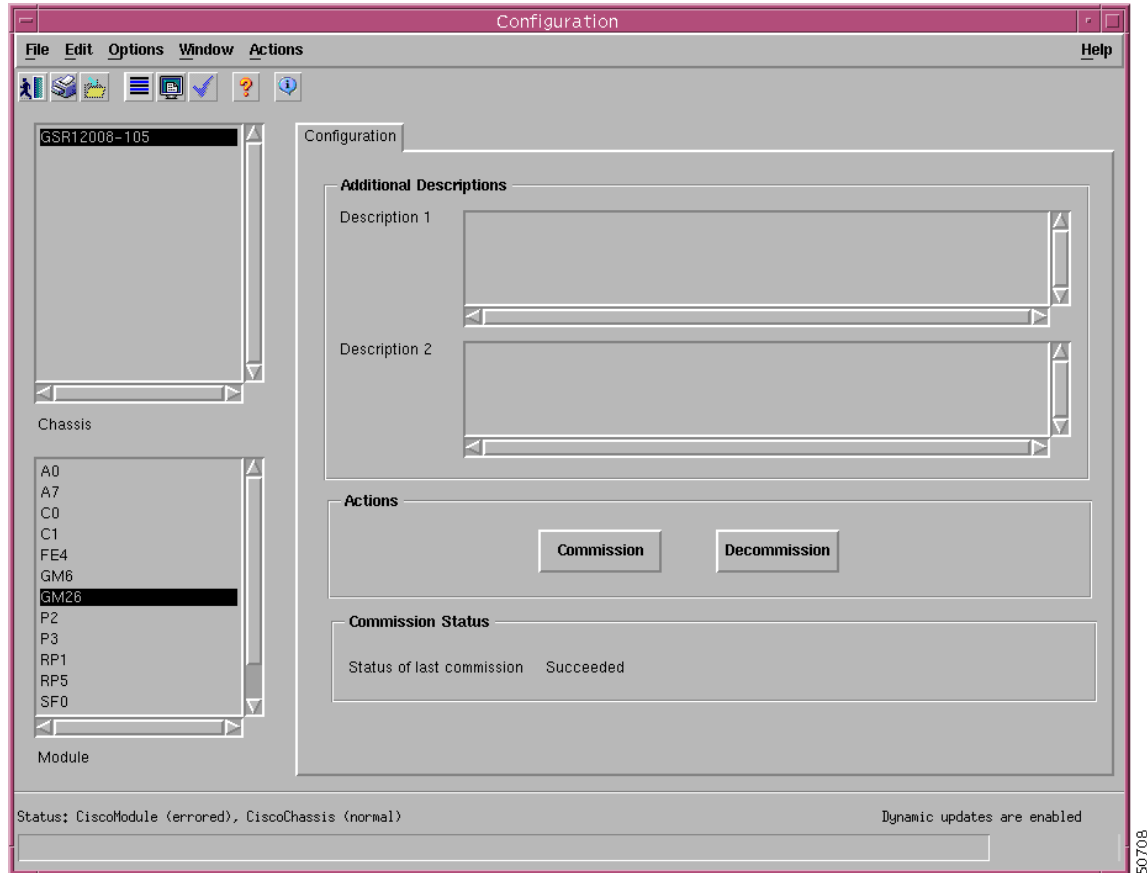
- [Viewing the Configuration Window](#)
- [Commissioning a Selected Module](#)
- [Decommissioning a Selected Module](#)
- [Module Configuration Window—Detailed Description](#)

Viewing the Configuration Window

To view the Configuration window, proceed as follows:

- Step 1** Right click on a module and select the **Cisco 12000/10720 Manager>Configuration>Module Configuration** option. Refer to [Table 5-2 on page 5-2](#) for information on which objects allow you to launch the Configuration window. The Configuration window appears with the Configuration tab displayed:

Figure 5-1 Configuration Window



Step 2 Choose a **Chassis** and **Module** from the list boxes displayed at the left of the window.

Commissioning a Selected Module

Commissioning any card also commissions all the interfaces under the card.



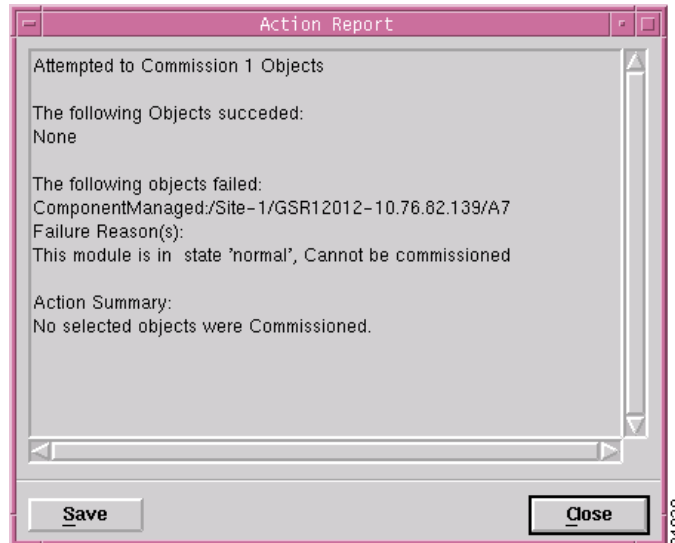
Note You can select multiple Modules (from the Module object selector list) which allows you to commission all of the selected modules simultaneously. You can choose multiple modules in a list by holding down the Shift key and then selecting the first and last module in the list. You can choose multiple individual modules by holding down the Ctrl key and clicking on the individual modules.

To commission a module, proceed as follows:

- Step 1** Open the Configuration window. Refer to the [“Viewing the Configuration Window”](#) section on page 5-3 for further details.
- Step 2** Choose a **Chassis** and **Module** from the list boxes displayed at the left of the window.

- Step 3** Enter additional descriptions into the Description 1 and Description 2 fields in the Additional Descriptions area (if required). Entering additional descriptions is optional.
- Step 4** Choose **Commission** to commission the selected module. An Action Report window appears confirming that the commissioning action was completed successfully.

Figure 5-2 Action Report Window



- Step 5** Choose **Close** to close the Action Report window.

The selected module is now commissioned. Commissioning a GRP or any supporting module initiates the following activities:

- Heartbeat polling begins on the object
- The state is changed to normal
- Status data becomes available

Commissioning a line card initiates the following activities:

- All interfaces on the line card are also commissioned
- Heartbeat polling begins on the line card and interfaces
- The line card and active interfaces are placed in the normal state
- Any interfaces that are pre-deployed but not active change to the errored state
- Status data becomes available on the line card and interfaces

Decommissioning a Selected Module



Note

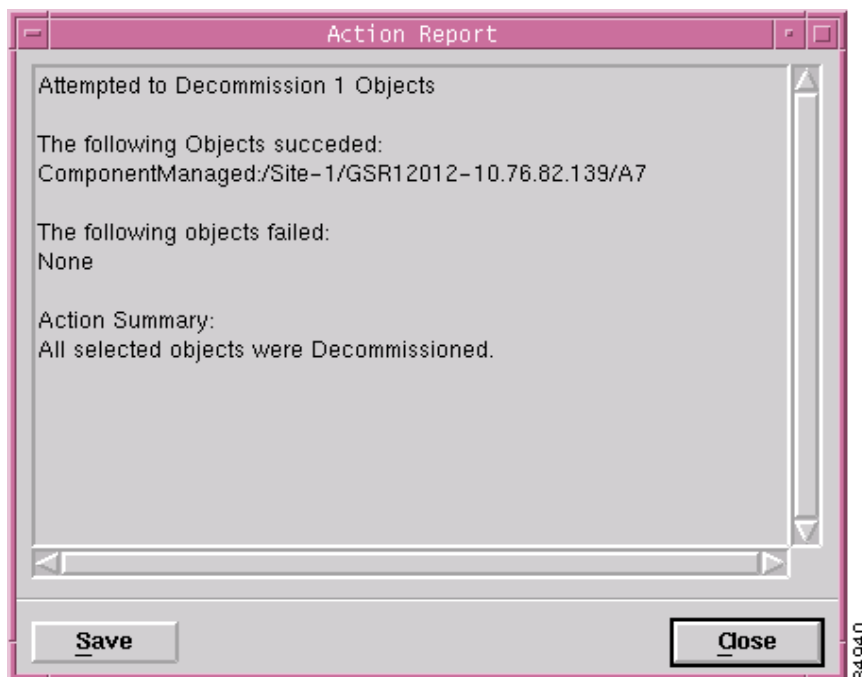
You can select multiple Modules from the Module object selector list. Selecting multiple modules allows you to decommission all of the selected modules simultaneously. You can choose multiple modules in a list by holding down the Shift key and then selecting the first and last module in the list. You can choose multiple individual modules by holding down the Ctrl key and clicking on the individual modules.

Decommissioning a GRP card also decommissions all interfaces under that GRP card.

To decommission a module, proceed as follows:

- Step 1** Open the Configuration window. Refer to the “[Viewing the Configuration Window](#)” section on page 5-3 for further details.
- Step 2** Choose a **Chassis** and **Module** from the list boxes displayed at the left of the window.
- Step 3** Choose **Decommission** to decommission the selected module. An Action Report window appears confirming that the decommissioning action was completed successfully.

Figure 5-3 Action Report Window



- Step 4** Choose **Close** to close the Action Report window.
- The selected module is now decommissioned. Decommissioning a GRP or any supporting module initiates the following activities:
- Heartbeat polling stops on the object
 - The state is changed to decommissioned
 - Status data is no longer available
 - Performance polling stops on the module (if enabled)
- Decommissioning a line card initiates the following activities:
- All interfaces and ATM connections on the line card are also decommissioned
 - Heartbeat polling stops on the line card and interfaces
 - The line card, interfaces, and ATM connections are placed in the decommissioned state
 - Status data is no longer available on the line card and interfaces

- Performance polling stops on the line card and interfaces (if enabled)
-

Module Configuration Window—Detailed Description

The Module Configuration window displays a single Configuration tab.

Configuration Tab

The Configuration tab (see [Figure 5-1 on page 5-4](#)) displays three areas: Additional Descriptions, Actions, and Commission Status.

Additional Descriptions

The Descriptions 1 and Descriptions 2 fields (optional) allow you to specify additional description information for the selected module (if required).

Actions

The Actions area contains two buttons:

Commission—Commissions the selected module.

Decommission—Decommissions the selected module.

Commission Status

The Commission Status area displays the status of the last commission performed on the selected module. Possible values are Succeeded or Failed.

Module Fault Management

The Module Fault Management window is a read-only window and provides fault information for a selected module. You do not need to enter any information into any of the fields. This section provides the following information:

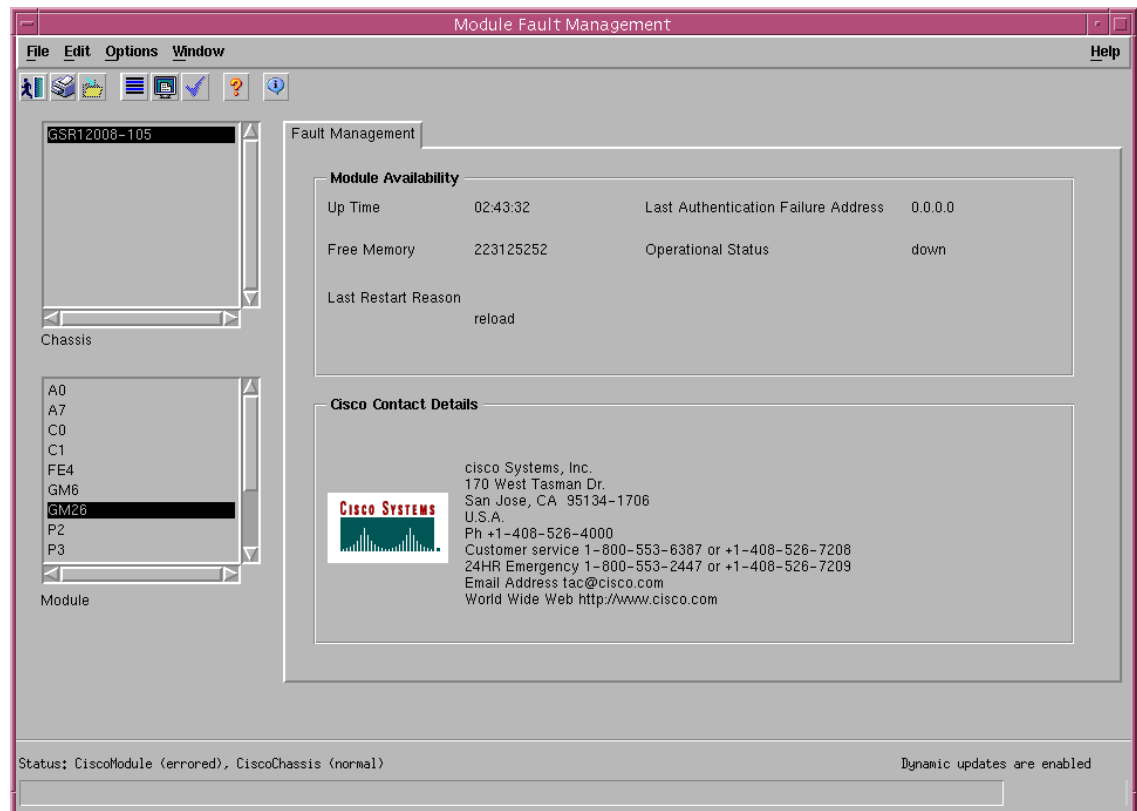
- [Viewing the Module Fault Management Window](#)
- [Module Fault Management Window—Detailed Description](#)

Viewing the Module Fault Management Window

To view the Module Fault Management window, proceed as follows:

- Step 1** Right click on a module and select the **Cisco 12000/10720 Manager>Fault>Module Fault Management** option. Refer to [Table 5-2 on page 5-2](#) for information on which objects allow you to launch the Module Fault Management window. The Module Fault Management window appears, with the Fault Management tab displayed:

Figure 5-4 Module Fault Management Window



- Step 2** Choose a **Chassis** and **Module** from the list boxes at the left of the window. The fault management information for the selected module appears. For detailed information on the areas within this tab, refer to the [“Module Fault Management Window—Detailed Description”](#) section on page 5-9.

Module Fault Management Window—Detailed Description

The Module Fault Management window displays a single Fault Management tab. The Fault Management tab displays two areas: Module Availability and Cisco Contact Details.



Note The details related to the modules are available only if the module is in a managed state.

Module Availability

The Module Availability area contains the following fields:

- Up Time—Displays the time after the network portion of the system was last re-initialized for the selected module.
- Free Memory—Displays the memory space (in bytes) currently unused by the selected GRP module.
- Last Restart Reason—Displays the reason for the system being re-initiated for the selected GRP module.
- Last Authentication Failure Address—Displays the last authorization failure IP address for the selected module.
- Operational Status—Displays the current operational status of the selected GRP module. Possible values are:
 - Up—Module is recognized by the device and is operational.
 - Down—Module is not recognized by the device or not enabled for operation.
 - Standby—Module is enabled and is acting as standby. This value is only applicable for redundant GRPs.

Cisco Contact Details

The Cisco Contact Details area provides Cisco contact details.

Module Performance

The Module Performance window displays the current performance information for the selected GRP module.



Note

You can select multiple Modules from the Module object selector list. Selecting multiple modules allows you to start or stop performance logging for all of the selected modules simultaneously. You can choose multiple modules in a list by holding down the Shift key and then selecting the first and last module in the list. You can choose multiple individual modules by holding down the Ctrl key and clicking on the individual modules.

The Module Performance tab displays CPU Usage information and allows you to Start or Stop performance logging for one or more selected modules.

**Note**

Performance logging can also be started on a per module (GRP) or physical interface basis. For details on how to start performance logging for a selected module (GRP), refer to the [“Module Performance” section on page 5-9](#). For details on how to start performance logging for a selected physical interface (such as Ethernet, ATM, or DS-3), refer to the [“Starting Performance Logging for a Selected Interface” section on page 10-6](#).

Selecting a module provides performance data for the selected module. The values displayed relate to CPU performance, so modules without a CPU display the same value as the CPU card in the chassis.

The Module Performance section provides the following information:

- [Viewing the Module Performance Window](#)
- [Starting or Stopping Performance Logging](#)
- [Module Performance Window—Detailed Description](#)

Viewing the Module Performance Window

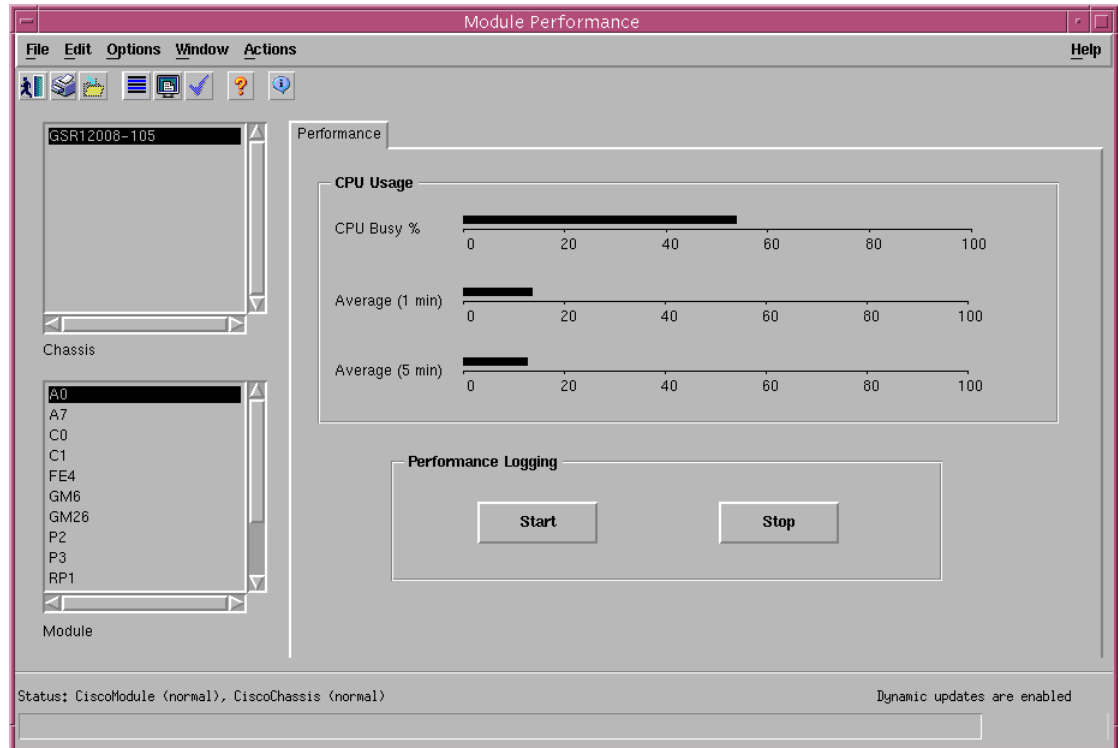
**Note**

The Module performance window can be launched from the chassis level. Please note that this window cannot be launched from the module level.

To view the Module Performance window, proceed as follows:

-
- Step 1** Right click on the chassis object and select the **Performance>Module>Performance** option. Refer to [Table 5-2 on page 5-2](#) for information on which objects allow you to launch the Module Performance window. The Module Performance window appears, with the Performance tab displayed:

Figure 5-5 Module Performance Window



- Step 2** Choose a **Chassis** and **Module(s)** from the list boxes displayed at the left of the window. The performance information for the selected GRP module is displayed.

Starting or Stopping Performance Logging

Performance logging allows performance information to be collected for a selected module. This historical information can then be viewed using the Cisco EMF Performance Manager application. [Chapter 20, “Performance Management and Historical Data,”](#) provides further information on how to use the Performance Manager application.

To Start/Stop performance logging for a selected module, proceed as follows:

- Step 1** Open the Module Performance window. Refer to the [“Viewing the Module Performance Window”](#) section on page 5-10 for further details.
- Step 2** Choose a **Chassis** and **Module(s)** from the list boxes displayed at the left of the window. The performance information for the selected GRP module is displayed.



Note You can select multiple Modules from the Module object selector list. Selecting multiple modules allows you to start/stop performance logging for all of the selected modules simultaneously. You can choose multiple modules in a list by holding down the Shift key and then selecting the first and last module in the list. You can choose multiple individual modules by holding down the Ctrl key and clicking on the individual modules.

- Step 3** Click **Start** to begin performance logging for the selected module. Click **Stop** to stop performance logging for the selected module.
- Step 4** Launch the Performance Manager application to view the historical performance information for the selected module. Refer to [Chapter 20, “Performance Management and Historical Data,”](#) for further information on how to use the Performance Manager application.
-

Module Performance Window—Detailed Description

The Module Performance window (see [Figure 5-5 on page 5-11](#)) displays a single Performance tab. The Performance tab has two areas: CPU Usage and Performance Logging.

CPU Usage

The CPU Usage area displays the following fields:

- **CPU Busy%**—Displays the percentage of CPU put to use for the selected GRP module.
- **Average (1 min)**—Displays the percentage of CPU being utilized averaged over a one minute period for the selected GRP module.
- **Average (5 min)**—Displays the percentage of CPU being utilized averaged over five minute period for the selected GRP module.

Performance Logging

The Performance Logging area allows you to start or stop performance logging.

- **Start**—Click **Start** to enable performance logging for the selected GRP module. Enabling performance logging allows performance data to be gathered for the selected module. Performance polling occurs every 15 minutes. Performance data is then gathered and stored for historical review. Current performance data can be viewed in the performance windows, or you can view historical performance data in Performance Manager.
- **Stop**—Click **Stop** to stop all performance logging on the selected module. Disabling performance logging stops performance data from being gathered for the selected GRP module.

Module Inventory

The Module Inventory section provides the following information:

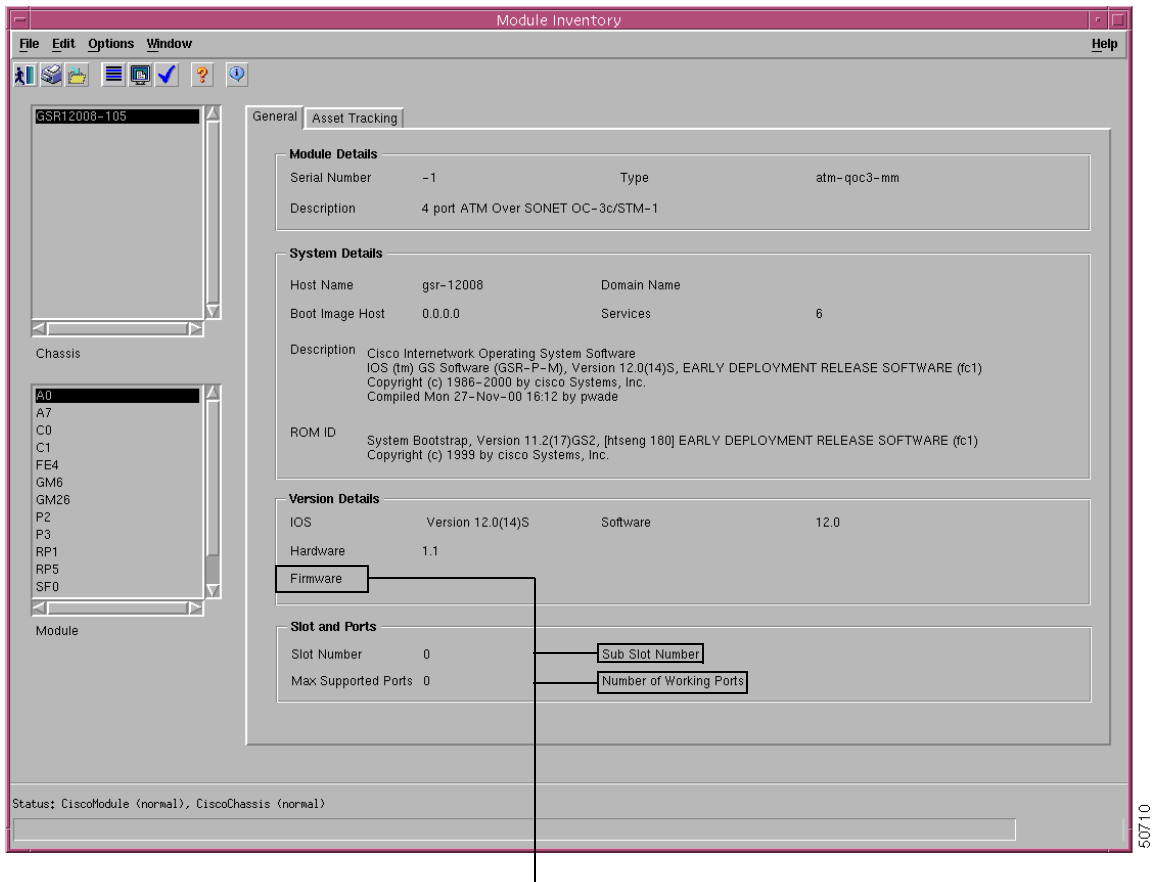
- [Viewing the Module Inventory Window](#)
- [Module Inventory Window—Detailed Description](#)

Viewing the Module Inventory Window

To view the Module Inventory window for a selected module, proceed as follows:

- Step 1** Right click on the module and select the **Cisco 12000/10720 Manager>Accounting>Module Inventory** option. Refer to [Table 5-2 on page 5-2](#) for information on which objects allow you to launch the Module Inventory window. The Module Inventory window appears, with the General tab displayed:

Figure 5-6 Module Inventory Window



Not applicable for Cisco 12000/10720 Router Manager

- Step 2** Choose a **Chassis** and **Module** from the list boxes at the left of the window. The inventory information for the selected module appears.

**Note**

The Module Inventory window is read-only.

Module Inventory Window—Detailed Description

The Module Inventory window has two tabs: General and Asset Tracking. Only the General tab is applicable to Cisco 12000/10720 Router Manager. The Asset Tracking tab is not applicable to Cisco 12000/10720 Router Manager.

General

The General tab (see [Figure 5-5 on page 5-11](#)) has four areas:

Module Details

The Module Details area contains the following fields:

Serial Number—Displays the serial number of the selected module. This number is zero if data is unavailable.

Description—Displays a description of the selected module.

Type—Displays the type of the selected module.

System Details

The System Details area contains the following fields:

Host Name—Displays the host name of the system which contains the selected module.

Boot Image Host—Displays the IP address of the host, which supplies the software currently running.

Description—Displays the hardware type, software operating system, and networking software of the system that contains the selected module.

ROM ID—Displays the system boot strap description and version identifier.

Domain Name—Displays the domain portion of the domain name for the system which contains the selected module.

Services—Displays all the services available on the system.

Version Details

The Version Details area contains the following fields:

IOS—Displays the IOS operating software version being used by the selected module.

Hardware—Displays the version of the selected module.

Firmware—Not applicable to Cisco 12000/10720 Router Manager.

Software—Displays the software version installed in the card. No information appears if data is not available.

Slot & Ports

The Slot & Ports area contains the following fields:

Slot Number—Slot position the module occupies in the chassis.

Max Supported Ports—Maximum number of ports supported on this module.

Sub Slot Number—Not applicable to Cisco 12000/10720 Router Manager.

Number of Working Ports—Not applicable to Cisco 12000/10720 Router Manager.

Asset Tracking

The Asset Tracking tab is not applicable to Cisco 12000/10720 Router Manager.

Free Manuals Download Website

<http://myh66.com>

<http://usermanuals.us>

<http://www.somanuals.com>

<http://www.4manuals.cc>

<http://www.manual-lib.com>

<http://www.404manual.com>

<http://www.luxmanual.com>

<http://aubethermostatmanual.com>

Golf course search by state

<http://golfingnear.com>

Email search by domain

<http://emailbydomain.com>

Auto manuals search

<http://auto.somanuals.com>

TV manuals search

<http://tv.somanuals.com>