

CITIZEN

Z-START

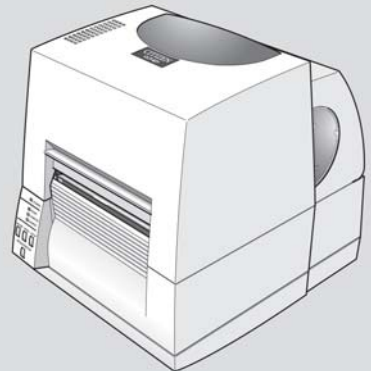
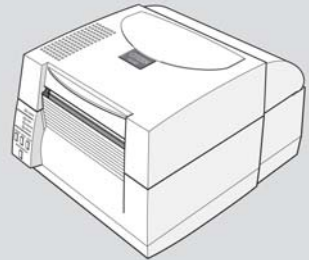
GUIDE

This guide gives you specific information for the CLP 521Z and CLP 621Z printers from Citizen that is not contained in the other user manuals and documents.

Thermal Label & Barcode Printer

CLP-521Z

CLP-621Z



1 Introduction

What does the “Z” mean?

Label printers talk a variety of different languages! Our printers usually use their own Citizen language but we have created a version that specifically understand the ZPL® language from Zebra®.

So your CLP 521Z or CLP 621Z printer understands this ZPL® language instead of the normal Citizen language.

How does this affect me?

In normal operation, you will notice no difference in operation of your printer. It will still print labels in the same way and media and ribbons are loaded in exactly the same way to a normal printer.

Please refer to the other quick-start guides for details of media loading and operation of the printer.

However, the configuration and setup of some of the printer's internal settings will be a little different. This may not affect you either if your printer can be used in an 'out of the box' configuration.

What does this guide say?

This guide explains the differences in the printer's configuration system and also explains the best printer driver to use with different applications including the Windows® operating systems

Windows® is a registered trademark of Microsoft Corporation in the United States and/or other countries. ZPL® and Zebra® are registered trademarks of Zebra Technologies (ZIH Corp) in the United States and/or other countries.

2 Using VuePrint™ Configuration System

```
Machine Information
Model Number       : CLP-521Z
Boot Version       : 0000
ROM Version        : CM000000
ROM Data (DD/MM/YY) : 00/00/05
ROM Check Sum     : 0000
Head Check        : OK
Print Counter      : 0.045 km
Service Counter   : 0.045 km
Sensor Monitor    : 1.14 V
Option Interface   : None

Current Menu Settings

[Page Setup Menu]
Print Speed        : 4 IPS
Print Darkness     : 10
Darkness Adjust   : 00
Print Method       : Direct Thermal
Continuous Media Length : 4.00 inch
Vertical Position  : 0.00 inch
Horizontal Shift   : 0.00 inch
Media Sensor       : See Through
Small Media Adjustment : Off
Small Media Length : 1.00 inch

[System Setup Menu]
Sensor Level       : 1.5 V
Buzzer Select     : On
Metric/Inch for VuePrint : Inch
Max Media Length  : 10.00 inch
Settings Lock     : Off
Keyboard Lock     : Off
Control Prefix    : <^> 7EH
Format Prefix     : <^> 5EH
Delimiter Prefix  : <,> 2CH
Media Power Up    : On

[After Print Menu]
AutoConfigure     : On
Function Select   : Tear
Cutter Action     : Backfeed
Paper Position    : 0.00 inch
Mode/Repeat Key   : Disabled

[Interface Menu]
RS-232C Baud rate : 9600 bps
RS-232C Parity    : None
RS-232C Length   : 8 bit
RS-232C Stop bit  : 1 bit
RS-232C X-ON     : Yes
IEEE 1284        : On

Do you want to print the current menu settings?
Yes=(PAUSE) No=(STOP)

Citizen CLP-521Z VuePrint Menu System

The four control panel buttons are used to select
different options. Generally:
Yes / Select / Save = PAUSE(P) key
No / Next Item / Increase Item = STOP (S) key
Next Digit = FEED (F) key
Exit to previous menu = MODE (M) key
```

How to Use VuePrint™

The VuePrint menu system is used to make changes to the settings of the printer. Please refer to the Quick Start Guide for more details on its operation. You can access the VuePrint system by switching on the printer holding down the [MODE] key.

Machine Information

This section of the print out will give you details specific to your printer, such as the version of firmware, total distance printed by your printer and the media sensor or optional interfaces.

Current Menu Settings

The “Page Setup”, “After Print” and “Interface” menus are exactly the same on these printers. However, the System Setup menu has some different parameters.

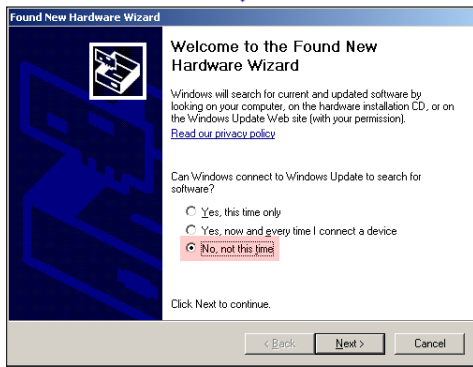
- The Metric/Inch option is only used to change the display in the VuePrint menu output and has no effect on printer operation and layout
- The Control Prefix, Format Prefix and Delimiter Prefix are all changeable in these printers. This changes the 'command codes' that the printer recognizes as actions for the printer. You will only need to change this for specific customer applications.
- The “Media Power Up” option (either On or Off) determines whether or not the printer feeds the paper to the top-of-form (start of a new label) when the printer is turned on. This is “on” by default but you may choose to switch this off for certain applications.
- The “Control Code” and “Emulation Select” menu options are not present or needed on the CLP 521Z or 621Z printers.

3 Installing a Printer Driver under Windows® XP®

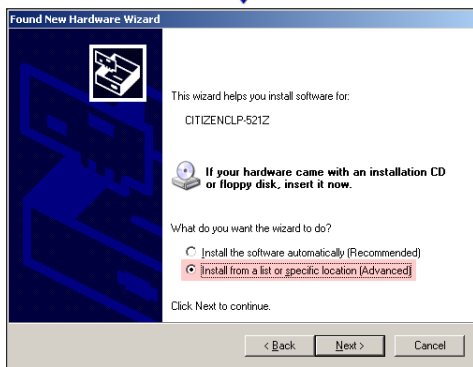
Your printer will not function correctly with a 'standard' Citizen CLP Windows® driver. You must use a special driver to ensure compatibility. Contained on the CD supplied with your printer is a special version of driver in the folder "ZDRIVER". This contains a suitable Windows® driver to run your CLP 521Z or CLP 621Z. But because your printer is emulating a Zebra® machine, you will need to install the driver in a slightly different way to ensure compatibility. This operation only takes a two minutes:

If you are using USB or if your PC detects the printer automatically, you will see the "Found New Hardware Wizard" box. If not, please follow the instructions on the right-hand side.

If your PC does not automatically sense your printer you must go to the "Add Printer" function in the Printers section of Windows, usually accessed from the Start > Settings menu.

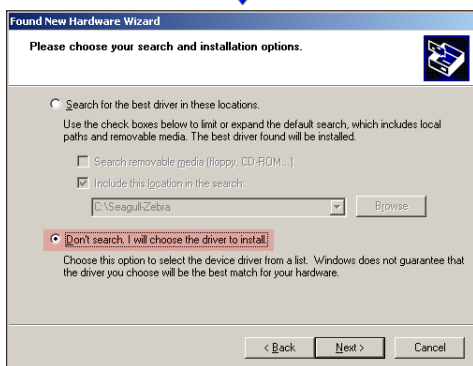


The **Found New Hardware Wizard** box will appear. Choose the **"No, not this time"** option so you can specify which driver to install and then Next>

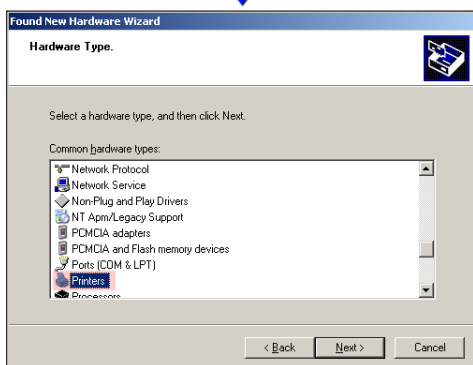


Please check to ensure the wizard is referring to the **CITIZENCLP-521Z** or **CLP621Z** otherwise it has found another piece of new hardware in the PC.

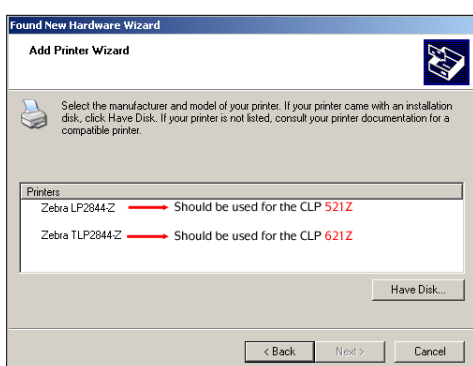
Ensure you click on the **"Install from a list or specific location (Advanced)"** option and then Next>



Ensure you check the **"Don't Search. I will choose the driver to install"** option and then click on Next>



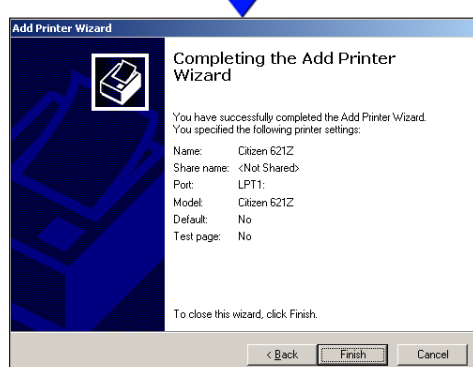
Scroll down and choose the **"Printers"** option and then Next>



Using the CD, you will see a list of two possible drivers. Ensure you choose the correct one to match your printer.

If you downloaded original Zebra® drivers from Seagull Scientific's website, the list will be much longer, but ensure you choose the correct driver:

- For CLP 521Z, choose Zebra® LP-2844-Z
- For CLP 621Z, choose Zebra® TLP-2844-Z



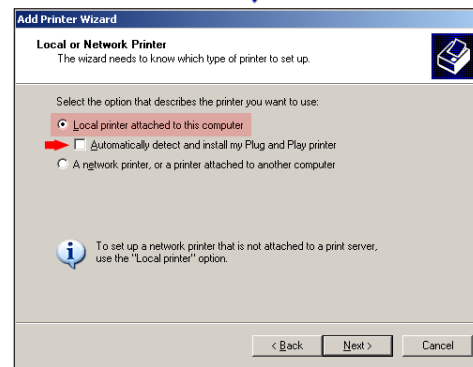
Windows may warn you that drivers are "not recommended" and also show a dire warning about the software having not been verified

Citizen can assure you that we have tested all our software very carefully. Click on the **"Continue Anyway"** button.

Click past these and to Finish>

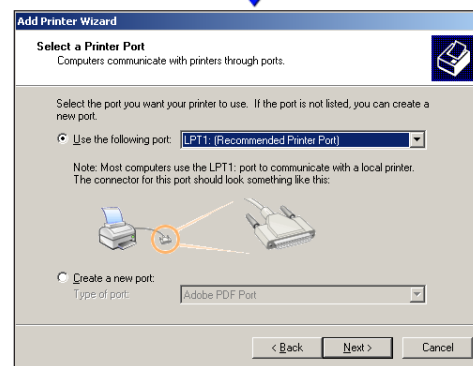


The **Add Printer Wizard** box will appear. Choose Next>

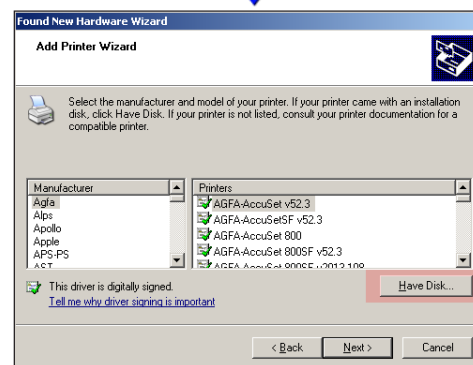


If you "tick" the **"Automatically detect and install"**, you will probably go directly to the "Found New Hardware Wizard" in which case you can follow the instructions from the left side of this guide.

Otherwise, ensure "Local Printer" is highlighted and click Next>

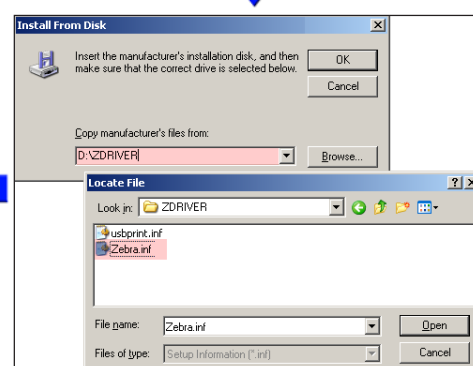


Select the correct port you plan to use, usually the LPT1 (Parallel) port or COM1 (Serial) port.



Do not look for or use a Citizen or Zebra name in the list.

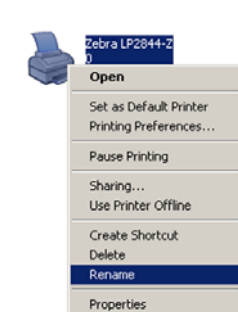
Click on the **"Have Disk"** option and then Next>



Enter the location of the driver files supplied by Citizen. If you are using the CD supplied with your printer, they are stored in **D:\ZDRIVER** (where D: is the letter of your CD ROM drive).

You can also download original Zebra® drivers from:

www.seagullscientific.com



Windows® should advise you that the add printer setup is now complete.

If you return (or open) the printers section in Windows®, you should now see the "Zebra®" driver installed.

Simply right-click on the name and choose "Rename" and type in "Citizen CLP-Z" (or any other suitable name).

The installation should now be complete.

4 Using An Existing Driver

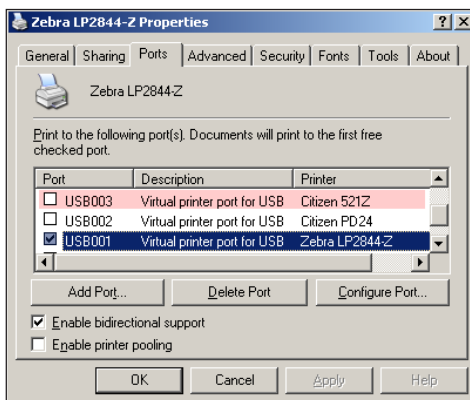
To use an existing driver previously installed on your system, you will still need to install the printer following the procedure shown in section 3. After installation, you can then modify the existing printer driver to use the new Citizen printer instead.

Go to the “**Printers and Faxes**” menu from the “Start > Settings” button. **RIGHT**-click on the original printer driver to be changed and then click on the properties option.

Click on the “Ports” tab and you will see a screen similar to the one shown here. The current “port” for the printer will be highlighted, e.g. “USB001”.

You must find the port that is already allocated to the **new Citizen Z printer** that has just been installed. This may also be a USB port, but it will have a different number.

Click on the tick-box to select it and then click on OK and the original printer is now configured to print to the new one.



* For Further Information . . .

For further information and more detailed instructions please contact our local office:

For Europe, Middle East and Africa

Citizen Systems Europe

www.citizen-europe.com

Tel UK: +44 (0) 20 8893 1900

Tel Germany: +49 (0) 711 3906 420

For North and South America:

Citizen Systems America

www.citizen-systems.com

Torrance, California.

Tel: +1 310 781 1460

Printed in Europe

JM74915-ZO

Free Manuals Download Website

<http://myh66.com>

<http://usermanuals.us>

<http://www.somanuals.com>

<http://www.4manuals.cc>

<http://www.manual-lib.com>

<http://www.404manual.com>

<http://www.luxmanual.com>

<http://aubethermostatmanual.com>

Golf course search by state

<http://golfingnear.com>

Email search by domain

<http://emailbydomain.com>

Auto manuals search

<http://auto.somanuals.com>

TV manuals search

<http://tv.somanuals.com>