

TransCast^{FM}



DIGITAL LIFESTYLE OUTFITTERS

Download from www.Somanuals.com. All Manuals Search And Download.

© 2008 DIGITAL LIFESTYLE OUTFITTERS

The DLO logo, Digital Lifestyle Outfitters, and TransCast are trademarks of Digital Lifestyle Outfitters. iPod is a trademark of Apple Inc., registered in the U.S. and other countries. PSP is a trademark of Sony Entertainment Corp. All Rights Reserved

Printed in China

M92007-060601-J



| | |
|---|----|
| Quick Start | 04 |
| Using Your TransCast FM | 06 |
| About the DLO TransCast FM Transmitter | 06 |
| Setting Up Your TransCast FM | 06 |
| Finding Empty Radio Frequencies | 07 |
| Optimizing the Sound Quality of your TransCast FM | 07 |
| Charging Your TransCast FM in the Car | 08 |
| Tips + Troubleshooting | 09 |
| Tech Specs | 11 |
| FCC Statement | 12 |
| Warranty | 13 |

Quick Start

Thanks for purchasing the DLO TransCast FM. We'll get you up and running in 3 easy steps. For more detailed instructions, please read [Using Your TransCast FM \[pg 6\]](#).

1. Insert the included rechargeable battery.*

For long road trips in the car or to save the TransCast FM's battery power, attach and use the included Car Charger.

NOTE: Included battery must be charged before using. To charge your TransCast FM's battery, plug the Car Charger into your car's 12V cigarette lighter and into the TransCast FM's 5V DC Adapter Jack.

2. Plug in the TransCast FM Connection Cable.

Connect the cable to your iPod, iPhone, PSP or MP3 player's headphone jack, and then into your TransCast FM's headphone jack.

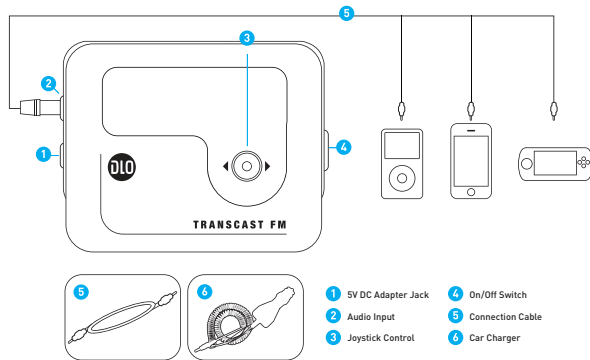
3. Turn on your TransCast FM and tune your car's FM radio to 88.1.

This is the default broadcast frequency for the TransCast FM. If 88.1 is not an empty frequency in your area (i.e. there is music or talk already on that station), tune your radio to an empty FM frequency. If you have to tune to a frequency other than 88.1 on your FM radio, be sure to tune your TransCast FM to that same frequency.

You are now ready to enjoy your iPod, iPhone, PSP or MP3 player's audio over your FM radio.

* Please make sure you use ONLY a rechargeable battery.

This device is not meant to be used with any other type of battery.



Using Your TransCast FM

About the DLO TransCast FM Transmitter

The TransCast FM is basically a mini radio station that broadcasts your device's audio to the radio in your car, at home, anywhere an FM radio is available. The TransCast FM will tune to any FM frequency from 88.1 to 107.9.

The TransCast FM is compatible with all iPod models/MP3 players, iPhone, Sony PSP and any audio device with a headphone output.

Setting Up Your TransCast FM

1. Insert the included rechargeable battery into the TransCast FM's battery compartment. For long road trips in the car or to save the TransCast FM's battery power, attach and use the included Car Charger.
2. Plug the Connection Cable into your iPod, iPhone, PSP or MP3 player's headphone jack, and then into your TransCast FM's audio input.
3. Turn on your TransCast FM. The default frequency for the TransCast FM is 88.1, which should be displayed on the TransCast FM's LCD screen.
4. Turn on your FM radio and tune to 88.1. If 88.1 is occupied, find an empty FM station with no signal. For more help with this, please read [Finding Empty Radio Frequencies \[pg 7\]](#).
5. Using the Joystick Control on the TransCast FM, match the FM frequency on your TransCast FM with the empty FM station on your radio. You should

hear most of the static go away when you do this. Now your radio has found the TransCast FM's signal.

6. Press play on your connected iPod, iPhone, PSP, MP3 player or other audio device to enjoy its audio.

Finding Empty Radio Frequencies

If you live in a big city with a lot of FM radio stations, finding an "empty" FM frequency can be tricky. Here are some tips for finding an empty station:

- Be sure to search the entire spectrum of FM frequencies, from 88.1 to 107.9. Don't just look to the low end of the dial. There are often empty FM stations in the 100's that will work great.
- When using scan/seek on your car radio, if your tuner stops on 101 and then jumps to 103, look in the 102 frequencies for empty stations.
- Try scanning to a strong station, then backing down two frequencies - for example 103.5 to 103.1. You can often find empty frequencies this way. If that frequency is taken, scan to the next station and try again.

Optimizing the Sound Quality of Your TransCast FM

To achieve the best sound quality from your TransCast FM, you must carefully adjust the volume level of your device. Try turning up the volume of your device until you hear noise or distortion, then turn the volume down to just below that level. This is the optimal volume level, which can change based on the style of music you are playing.

Tips + Troubleshooting

Once you have set the optimal volume level of your device, you should control the overall listening volume with your car radio's volume, not the volume on your device.

Charging Your TransCast FM in the Car

The TransCast FM includes a Car Charger that both powers the TransCast FM and recharges the TransCast FM's battery. The Car Charger works with any 12V cigarette lighter in your car, van or truck. Simply plug the Car Charger into the 5V DC Adapter Jack on your TransCast FM to keep your TransCast FM powered and playing for those long trips.

I can't find an empty FM frequency in my area.

Be sure to look in the 100's, not just to the left of the dial in the 80's or 90's. Try scanning to a strong station, then back down two frequencies - for example 103.5 to 103.1. If that frequency is taken, try scanning to the next strong station and repeat. For more tips and helpful information, please read [Finding Empty Radio Frequencies \[pg 7\]](#).

My music is playing but there seems to be a lot of static in the sound.

First, check that you have a clear frequency. Turn off the TransCast FM to see if there might be a radio station interfering. If so, find a clearer station. We suggest you use the supplied rechargeable battery or an equivalent rechargeable battery of good quality. A poor quality battery will affect the sound quality and possibly damage the TransCast FM.

My radio will only scan to occupied FM stations.

Many car radios default to scan/seek mode for tuning, so they automatically tune to a radio station. Most of these radios can be switched to manual tuning (consult your car's or radio's manual on how to do this). You can also "find" your TransCast FM by tuning to its selected frequency. Your scan/seek function will most likely find your TransCast FM.

My music sounds overdriven and distorted.

Be sure that the FM station you're using is still unoccupied as you drive through different areas. FM signals can intrude on an unused frequency. Also, when the

battery is low, the sound quality may be affected. If you experience increased static or poor sound quality, be sure to that the TransCast FM's rechargeable battery is charged. If you find that your TransCast FM's rechargeable battery is not fully charged, plug your TransCast FM into your car's 12V cigarette lighter with the included Car Charger.

COMPATIBILITY

All iPod/MP3 models, iPhone, PSP and any device with headphone output

FM STEREO TRANSMITTER

Full frequency FM transmitter with LCD display

Frequency range: from 88.1 – 107.9

Operation range: 0-3 meters

FM Frequency will display on LCD screen

CONNECTIONS

Audio input: 3.5mm stereo mini jack

POWER

Input power voltage: 5V DC

Power source: 1x rechargeable battery (AAA size)*

Battery type: NI-MH AAA 700mAh 1.2V

Car charger: 5V DC output, 12V DC input

Fuse: 2A 250V replaceable

PHYSICAL

Dimensions: 59 mm x 49 mm x 14 mm (W x H x D)

Weight: 32 grams

DISPLAY

LCD display with integrated backlight function

ACCESSORIES

3.5mm Connection Cable

5V DC Car Charger with 1 meter cable (unit will charge from the car adapter even when turned off)

***PLEASE NOTE:** When disposing of rechargeable batteries, please discard in an appropriate location like a battery recycling center at your local electronics store.

Federal Communications Commission Interference Statement

This device complies with Part 15 of the FCC rules. Operation is subject to the following two conditions: (1) This device may not cause harmful interference, and (2) this device must accept any interference received, including interference that may cause undesired operation.

CAUTION: Changes or modifications not expressly approved by the party responsible for compliance could void the user's authority to operate the equipment.

Digital Lifestyle Outfitters Limited Manufacturer's Warranty

What This Warranty Covers. DLO (Digital Lifestyle Outfitters) warrants this product against defects in materials and workmanship. This limited warranty applies only to products manufactured by or for DLO.

What This Warranty Does Not Cover. This warranty does not apply to damage caused by: (a) accident, abuse, misuse, misapplication, ordinary wear, improper maintenance, failure to follow instructions, or products not manufactured by or for DLO; and (b) aftermarket services (including upgrades and expansions).

How Long This Warranty Lasts. This warranty lasts for a period of ninety (90) days from the date of original retail purchase.

What DLO Will Do. If a defect exists, DLO will exchange the product, at its option, with a product that is new or has been manufactured from new or serviceable used parts and that is at least functionally equivalent to the original product. DLO will warrant a replacement product against defects in materials and workmanship for a period of ninety (90) days from the date of replacement.

How To Get Service. In order to be eligible for this warranty, you MUST register your purchase at www.dlo.com/register within thirty (30) days of purchasing this product. If you believe that this product is defective in materials or workmanship, please e-mail customerservice@dlo.com with a brief description of the problem, for further instructions.

No Change To Warranty. No DLO reseller, agent or employee is authorized to make any modification, extension, or addition to this warranty.

How State Law Applies. This warranty gives you specific legal rights, and you also may have other rights that vary from state to state, or country.

Restrictions On Implied Warranties. All implied warranties, including, without limitation, warranties of merchantability and fitness for a particular purpose, are limited in duration to the duration of this warranty. Some states do not allow limitations on how long an implied warranty lasts, so the above limitation may not apply to you.

Restrictions On Damages. DLO is not responsible for direct, special, incidental or consequential damages resulting from any breach of warranty or condition or under any other legal theory (including, without limitation, lost profits; downtime; goodwill; damage to or replacement of equipment and property; failure to maintain the confidentiality of data stored on the product; and any costs of recovering, reprogramming or reproducing any program or data stored in or used with products manufactured by or for DLO). Some states and countries do not allow the exclusion or limitation of incidental or consequential damages, so the above limitation or exclusion may not apply to you.

W1000-050803-B



Thanks for purchasing the TransCast FM
Enjoy the Music

Free Manuals Download Website

<http://myh66.com>

<http://usermanuals.us>

<http://www.somanuals.com>

<http://www.4manuals.cc>

<http://www.manual-lib.com>

<http://www.404manual.com>

<http://www.luxmanual.com>

<http://aubethermostatmanual.com>

Golf course search by state

<http://golfingnear.com>

Email search by domain

<http://emailbydomain.com>

Auto manuals search

<http://auto.somanuals.com>

TV manuals search

<http://tv.somanuals.com>