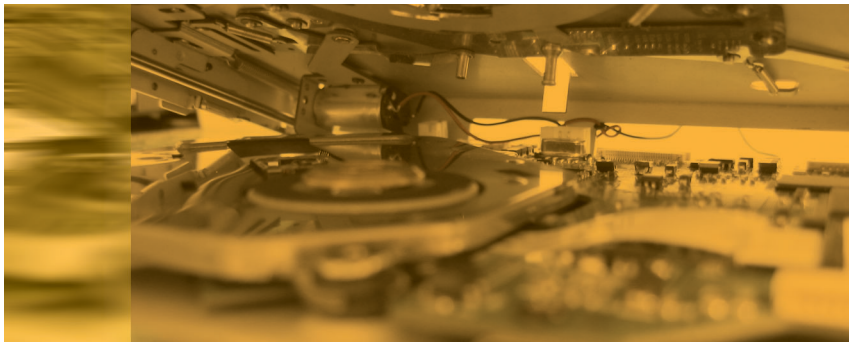


# Slot-in DVD Loader DSS-816



## \* Mechanism

- **Ultra slim** dimensional DVD mechanism  
144mm(W) X 144mm (D) X 17mm (H)
- 80mm / 120mm Disc support
- Support Any Angle mounting
- Loading system of sensor type
- BLDC (Brushless DC ) spindle motor



## SPECIFICATIONS

### Performance

Applicable Disc Format  
DVD-5, DVD-9, DVD-10, DVD-18, DVD-R/RW, DVD+R/RW,  
CVD, SVCD, DVCD, VCD, CD-Audio, Enhanced CD, Mixed CD  
CD-R/RW, MP3, HDCD, DVD-Audio

Rotational Speed  
DVD: 1.6 ~ 2.4X(ZONE CLV) Approx. 1,587 rpm to 2,222 rpm  
CD: 3.9 ~ 5.5X(ZONE CLV) Approx. 1,321 rpm to 1,936 rpm

Data Transfer Rate for Reading  
\* Sustained Data Transfer Rate  
DVD: Approx. 2,216 ~ 3,324 KB/sec VCD: Approx. 672 ~ 947 KB/sec

Average Access Time  
\* Random Access  
DVD : 320 ms Typical CD : 420 ms Typical

3.1.5. Data Buffer Capacity : 256 Kbytes

Error Rate  
DVD Hard Error Rate : 10E-15 max.  
Seek Error Rate : 10E-6 max.  
CD Hard Error Rate : 10E-12 max. (Mode 1)  
10E-9 max. (Mode 2)  
Seek Error Rate : 10E-6 max.

### Environmental Conditions

This Loader should be used under the conditions listed below.

#### Temperature and Humidity

Operating Temperature	-10°C to 50°C
Storage Temperature	-25°C to 70°C
Operating Humidity	10% to 80%
Storage Humidity	0% to 90%
Condensation	No condensation of the conditions above

#### Vibration

Operating	No unrecoverable error 10-500Hz sine sweep rate in 1 octave/min 0.4G in X, Y and Z directions 30 min/each direction
Non-Operating	No damage, No unrecoverable error 10-500Hz sine sweep rate in 1 octave/min 2G in X, Y and Z directions 30 min/axis

#### Shock

Operating (at a level surface)	No unrecoverable error 10 msec half-sine wave 3G in 3 directions 1 pulse 10sec interval (6 each direction)
Non-Operating	No damage, No unrecoverable error 10 msec half-sine wave 50G 1 time in each direction

### Quality and Reliability

Open/Close Cycle Test  
No fatal problem in the mechanical part after 10,000 times open/close cycle test.

Actuator Mechanism  
The drive will be capable of seeking at least 1,000,000 full strokes.

### Weight

DSS-816 (Car DVD Loader) only : 480g

### Mechanical dimensions

W x H x D : 144.0 x 17.0 x 144.0



## Free Manuals Download Website

<http://myh66.com>

<http://usermanuals.us>

<http://www.somanuals.com>

<http://www.4manuals.cc>

<http://www.manual-lib.com>

<http://www.404manual.com>

<http://www.luxmanual.com>

<http://aubethermostatmanual.com>

Golf course search by state

<http://golfingnear.com>

Email search by domain

<http://emailbydomain.com>

Auto manuals search

<http://auto.somanuals.com>

TV manuals search

<http://tv.somanuals.com>