

User's Manual

USB PC Camera

Table of Contents

1. How To Install And Use The PC Camera

<i>1.1 How To Install Camera Driver And Application Software</i>	<i>02</i>
<i>1.1.1 Install Driver.....</i>	<i>02</i>
<i>1.1.2 Install Application Software.....</i>	<i>02</i>
<i>1.2 Plug & Play Installation Under Windows.....</i>	<i>03</i>
<i>1.2.1 Install PC Camera and PC Camera driver.....</i>	<i>03</i>
<i>1.2.2 Restart Your Computer.....</i>	<i>04</i>
<i>1.3 How To Use Your PC Camera.....</i>	<i>05</i>

2. How To Install MicroSoft NetMeeting (For Windows 98/Me/2000)

<i>2.1 How To Install Microsoft NetMeeting</i>	<i>06</i>
<i>2.2 How To Start With PC Camera</i>	<i>06</i>

3. How To Install MSN® Messenger (For Windows 98/Me/2000/XP)

<i>3.1 How To Install MSN Messenger.....</i>	<i>07</i>
<i>3.2 How To Start With PC Camera.....</i>	<i>07</i>

4. Getting Started With VideoImpression 1.6

5. Getting Started With PhotoImpression 3.0

1. How To Install and Use The PC Camera

1.1 How To Install Camera Driver And Application Software

Do not connect the camera to your computer yet!

Insert the CD into your CD-ROM drive, the installer screen will automatically come up.

1.1.1 Install Driver

Click the "Install Device Driver" button to start installing.

Note: If the installer screen does not come up automatically, click Start, then Run and execute the file "launch.exe" on the CD to start the installer program.

1.1.2 Install Application Software

Check the box in front of the Software you would like to install, then click the "Install Application Software" button to start installing, then follow the instructions to proceed installation.

When installation completes, the Application Software group will appear as a folder on the Programs Menu. To start the Application software, click "Start", point to "Programs", and then click the Application software.

1.2 Plug & Play Installation Under Windows

1.2.1 Install PC Camera and PC Camera driver

1.2.1.1. Plug PC camera's connector to the USB port on your computer. Check to make sure you have the correct orientation while plugging the USB connector into the USB port of your computer.



1.2.1.2. Once Windows has detected new hardware added to the system, an USB Device message appears on the screen, asking you to search a new device.

1.2.1.3. In this dialog box, you will be asked to select a method to search for driver for your PC Camera. Choose “Install from the software automatically (Recommended)”



Insert the PC Camera CD into your CD-ROM drive. Click “Exit” button to close the autorun window while inserting CD into CD-ROM drive.

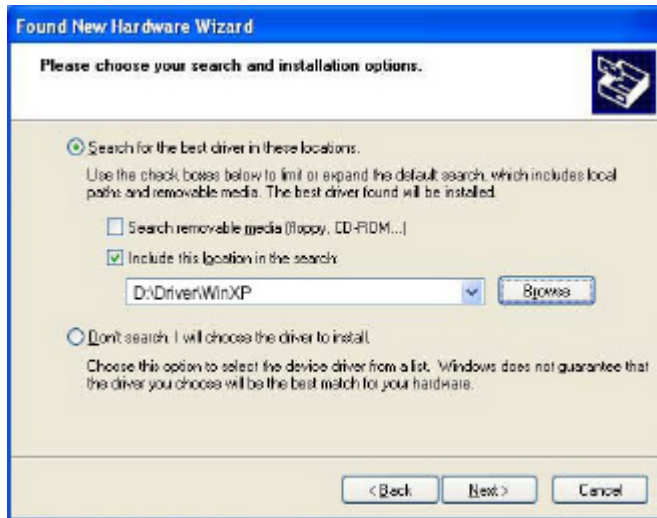
1.2.1.4 The screen asks you to specify your PC Camera. “**Found New Hardware Wizard**” shows the default path for the camera driver, depending on the existing operating system on your PC.

For Windows XP Users, please select **CD-ROM:\Driver\WinXP**

For Windows Me Users, please select **CD-ROM:\Driver\WinME**

For Windows 2000 Users, please select **CD-ROM:\Driver\Win2000**

For Windows 98 Users, please select **CD-ROM:\Driver\Win98**

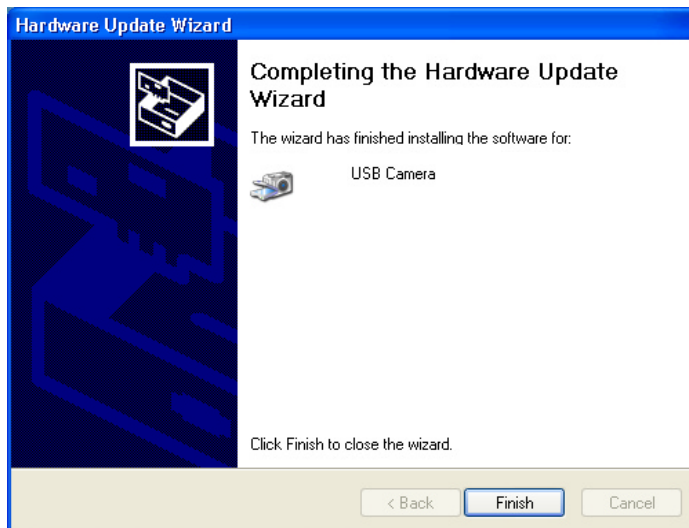


When you have finished the location selection, click “Next” to continue.

1.2.1.5. Windows will search for your PC Camera device and driver location. Then, displays the detected device and the driver location.

1.2.1.6. Click “Next” from the following screen, Windows will copy Driver files into your system.

1.2.1.7. When Windows has finished installing the necessary drivers, the following screen displays.



Click “Finish” to complete PC Camera driver installation.

1.2.2 Restart Your Computer

Once you have finished PC camera driver installation, you must restart your computer. Click Start, Shut Down, and select option “Restart” to restart.

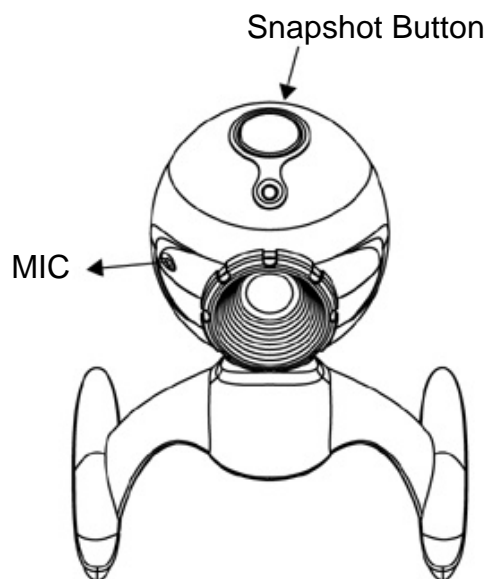
1.3 How To Use Your PC Camera

1.3.1 Set the Focus

1. Start VideoImpression.
2. Select " New. "
3. Select "Capture Video." The window shows live preview from video camera.
4. Turn the focus ring until image becomes sharp.

1.3.2 Capturing a Single Frame by Camera Snapshot Button

1. Start VideoImpression 1.6 (Refer Getting started page) working with VideoImpression.
2. Press the snapshot button on the top of camera to capture a single frame.



1.3.3 Preview

1. Follow steps 1~3 in "Set the Focus" to enable live preview.
2. To stop preview, click on "Stop" (🛑).
3. To resume preview, click on "Preview" (👁️).

1.3.4 Video Recording:

1. Follow steps 1~3 in "Set the Focus" to enable live preview.
2. To start video recording, click on "Record" (🎥).
3. To stop video recording, click on "Stop" (🛑) or ESC.
4. To save captured video, click on "Save" (💾).

2. How to Install Microsoft NetMeeting

2.1 How To Install NetMeeting

2.1.1 For Windows 98/Me Users

Click **Start**, point to **Programs**, point to **Accessories**, point to **Internet Tools** and then click **NetMeeting**.

For Windows 2000 Users

Click **Start**, point to **Programs**, point to **Accessories**, point to **Communications**, and click **NetMeeting**.

2.1.2 Click **Next**, type the appropriate information in the **First Name**, **Last Name**, **E-Mail Address**, **Location**, and **Comments** dialog boxes, and then click **Next**.

NOTE: The **Location** and **Comments** information is optional.

2.1.3 Click **Next**, click to select the **Log into a directory server when NetMeeting starts** check box (this is optional), and then type the name of the directory server in the **Server Name** dialog box. If you do not want your name to be visible in the directory, click to select the **Do not list my name in this directory** check box.

2.1.4 Click **Next**, and then select the appropriate location for the shortcuts.


2.1.5 Click **Next**, follow the instructions in the Audio Tuning Wizard, and then click **Finish**.

After you run NetMeeting for the first time, you can modify the information you entered about yourself or the directory server name that you want to connect to. To do so, click **Options** on the **Tools** menu, click the **General** tab, and then enter the appropriate information. Also, you can run the Audio Tuning Wizard again, and to do so, click **Audio Tuning Wizard** on the **Tools** menu.

If you can't install the NetMeeting from your PC directly, please log on to <http://www.microsoft.com/windows/netmeeting/> to download.

2.2 How to start with PC Camera

2.2.1. Plug the PC camera into your PC first.

2.2.2. Click the "**NetMeeting**"  to go to the main screen, and then click "**Start Video**" button, then you can start working with NetMeeting.

2.2.3. If you need more information or instruction on how to use a specific feature or tool, click the "**Help**" button in the upper right-hand corner of the screen.

3. How to Install MSN[®] Messenger

3.1 How To Install MSN Messenger

3.1.1 For Windows 98/Me/2000 Users

3.1.1.1 Please log on to <http://messenger.msn.com> to download. After the installation package is downloaded to your computer, it will start installing MSN Messenger. All you have to do is follow the instructions.

3.1.1.2 After the installation is completed, click **Start**, point to **Programs**, and click **Windows Messenger**.

3.1.2 For Windows XP Users

3.1.2.1 Click **Start**, point to **Programs**, and click **Windows Messenger**.

3.1.2.2 After you run Messenger for the first time, you can add friends to your list and send instant messages.

3.2 How To Start With PC Camera

3.2.1 Plug the PC camera into your PC first.

3.2.2 Click the “**Messenger**”  to go to the main screen

3.2.3 Click the **Webcam** icon  during a conversation.

–or–

3.2.4 Click the **Actions** menu on the main window, click **Start a Webcam Conversation**, select the name of the person you want to send video to, and then click **OK**.

For a 2-way webcam conversation, both participants must have a Web camera and each person must invite the other.

3.2.5 To stop sending your video image during a conversation, click the arrow under your video window, and then click **Pause Webcam** or **Stop Webcam**. You can continue to receive the other person's image, but your image will freeze in your contact's conversation window.

4. Getting Started With VideoImpression 1.6

- ◆ Connect your camera and your PC with the supplied USB cable.
- ◆ Click **Start® Select Programs® ArcSoft VideoImpression 1.6**
- ◆ The VideoImpression Main Screen will appear on your desktop.





The View Screen

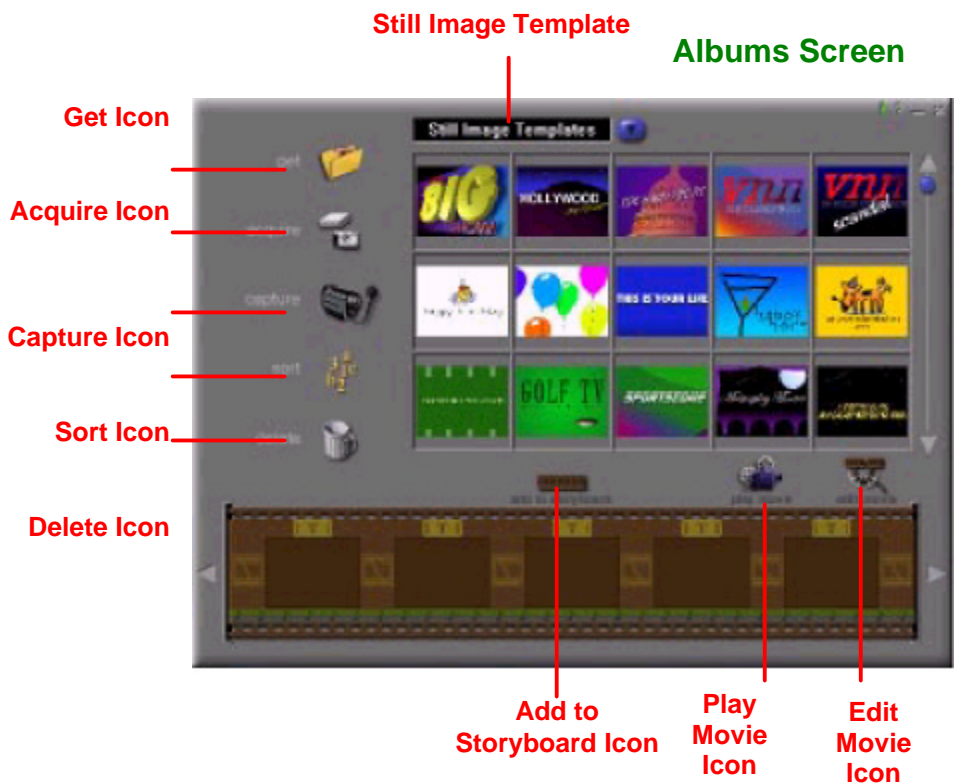
4.1 Viewing Camera Images through VideoImpression 1.6

4.1.1 Viewing Camera Images through VideoImpression:


To capture a video from the camera to the VideoImpression main screen.

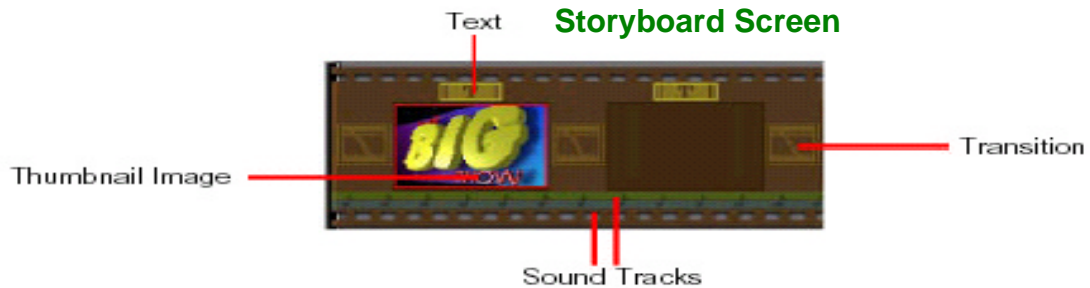
- ◆ Click the [**New** ] button.
- ◆ Click the [**Capture** ] button

4.1.2 Working with “Albums”: Use the options on the Album Screen to modify your movie.



4.1.3 Working with “Storyboards”:

Select images and add a thumbnail to your Storyboard by drag-and-drop or by highlighting a thumbnail and clicking on the **[Edit Movie **] icon. This will take you to the editing screen.



4.1.4 Getting Help: VideoImpression provides an extensive online Help. If you need more information or instructions on how to use a specific feature or tool, click the **[Help (?)]** button on the upper right-hand corner of the screen.




5. Getting Started With PhotoImpression 3.0

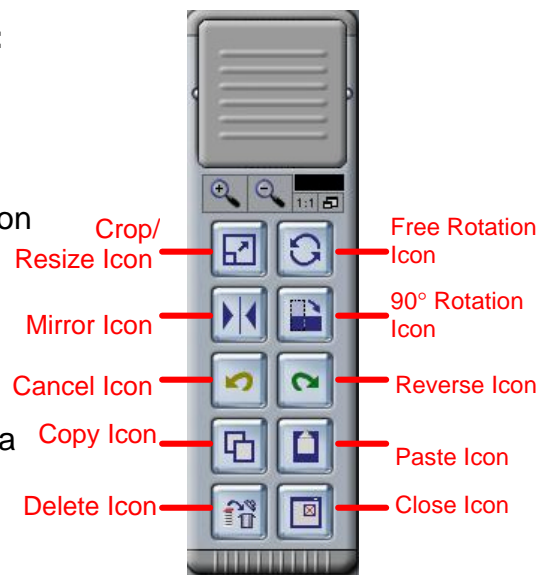
- ◆ Connect your camera and your PC with the supplied USB cable.
- ◆ Click **Start® Select Programs® ArcSoft PhotoImpression 3.0**
- ◆ The PhotoImpression Main Screen will appear on your desktop.



5.1 Viewing Camera Images through PhotoImpression 3.0

5.1.1 Viewing Camera Images through PhotoImpression:

- ◆ Click the [**Get Photo** ] button.
- ◆ Click the [**Camera/Scanner** ] button
- ◆ View live video from the [**Video Camera** ] button and you can get photos from the camera to the PhotoImpression main screen.



5.1.2 Editing an Image:

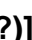
The toolbar along the right side of the main screen contains a number of editing tools, such as resize, mirror, rotation, etc.

5.1.3 Working with “Albums”:

Use the feature to organize photo files into groups and select them by clicking on a thumbnail photo rather than remembering a file name.

- ◆ Click the [**Get Photo** ] button and [**Select Album** ] to view the album options.

5.1.4 Getting Help:

PhotoImpression provides extensive online help. If you need more information or instructions on how to use a specific feature or tool, click the [**Help (?)** ] button in the upper right-hand corner of the screen.

Free Manuals Download Website

<http://myh66.com>

<http://usermanuals.us>

<http://www.somanuals.com>

<http://www.4manuals.cc>

<http://www.manual-lib.com>

<http://www.404manual.com>

<http://www.luxmanual.com>

<http://aubethermostatmanual.com>

Golf course search by state

<http://golfingnear.com>

Email search by domain

<http://emailbydomain.com>

Auto manuals search

<http://auto.somanuals.com>

TV manuals search

<http://tv.somanuals.com>