

Congratulations on your purchase of a high-quality Dynex product. Your new digital picture frame represents the state of the art in digital picture frame design and is designed for reliable and trouble-free performance.

Package contents

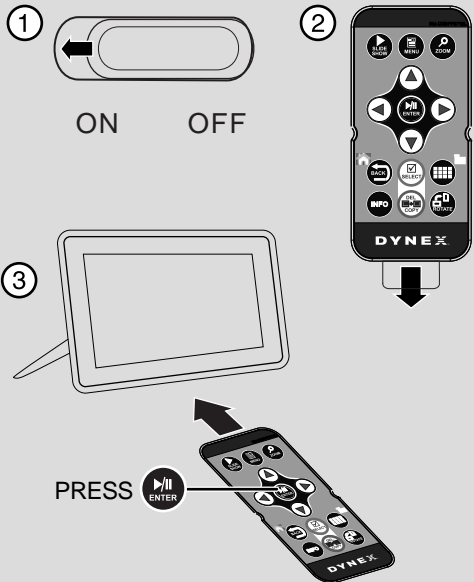
- Digital picture frame
- AC power adapter
- Remote control with battery (CR2025)
- User Guide
- Quick Setup Guide

ATTENTION: DISABLE DEMO MODE!

Your frame comes with a store demo mode enabled by default.

To disable store mode and enable buttons:

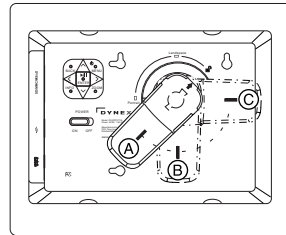
- 1 Turn the frame on.
- 2 Remove the remote control battery tab.
- 3 Point the remote control at the frame and press **ENTER**.



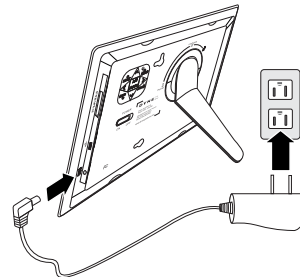
1 Set up your frame

Setting up the frame

- 1 Align and insert the stand with the arrow in the unlocked position.
- 2 Rotate the stand counter clockwise to Landscape (B) or Portrait (C) position.



- 3 Plug the AC power adapter into the frame's DC power connector and into an AC power outlet.



- 4 Slide the power switch to the **ON** position. The frame automatically turns on and starts playing a slide show of the pictures stored in internal memory. This slide show is called Demo mode.
- 5 Set up the remote control. Remove the plastic tab that extends past the bottom edge of the remote control. This tab protects the battery. The remote control will not work until the plastic tab is removed. For more information on using the remote control, see your *User Guide*.



- 6 To turn off Demo mode, point the remote control at the front of the frame and press **ENTER**.

2 Start your slide show

Viewing pictures on a memory card or USB memory device

Insert a memory card or USB memory device into the memory card slot or the USB port. A slide show of pictures from the memory card or USB memory device automatically starts to play.

Caution: Memory cards fit into the card slot in one direction only. Do not force a memory card into the slot.

The card should fit snugly when inserted correctly. Some cards require an adapter to fit correctly. For more information on supported memory cards, see "Specifications" in the *User Guide*.

For more information about using your digital picture frame, see your *User Guide*.

90-day limited warranty

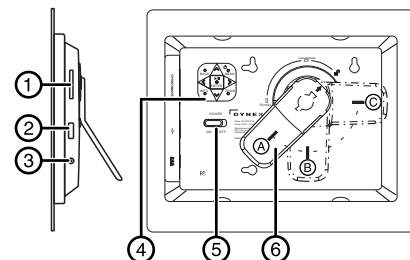
Visit www.dynexproducts.com for details.

Contact Dynex:

For customer service, call 1-800-305-2204
www.dynexproducts.com

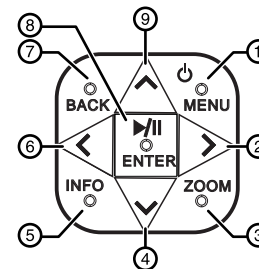
© 2011 BBY Solutions, Inc., All Rights Reserved. Distributed by Best Buy Purchasing, LLC
7601 Penn Avenue South, Richfield, MN USA 55423-3645
DYNEX is a trademark of BBY Solutions, Inc. All other products and brand names are trademarks of their respective owners.

Side and back



#	DESCRIPTION
1	Memory card slot (SD/SDHC/MMC/Memory Stick/xD) (Memory Stick Pro Duo/microSD require an adapter - not included).
2	USB port
3	DC 5V power connector
4	Navigation / Function buttons
5	Power On/Off switch
6	Rotating stand

Navigation / Function buttons



#	CONTROL	DESCRIPTION
1	MENU / ⏻	Press to display the <i>Setup</i> menu. Press and hold for two seconds to enter standby mode.
2	>	Press to move left or display the next picture.
3	ZOOM	Press to magnify the picture.
4	▼	Press to move down in a list or menu.
5	INFO	Press to display information about the displayed picture.
6	<	Press to move right or to display the previous picture.
7	BACK	During a slideshow, stops and returns back to thumbnail / file list.
8	ENTER / ⏪	Press to play or pause a slide show or to confirm a setting in a menu (enter).
9	▲	Press to move up in a list or menu.

Free Manuals Download Website

<http://myh66.com>

<http://usermanuals.us>

<http://www.somanuals.com>

<http://www.4manuals.cc>

<http://www.manual-lib.com>

<http://www.404manual.com>

<http://www.luxmanual.com>

<http://aubethermostatmanual.com>

Golf course search by state

<http://golfingnear.com>

Email search by domain

<http://emailbydomain.com>

Auto manuals search

<http://auto.somanuals.com>

TV manuals search

<http://tv.somanuals.com>