

Compaq Evo D300v

Illustrated Parts Map

Compaq Evo Desktop Family of Personal Computers
Microtower Models, Pentium 4 Processor



© 2002 Compaq Information Technologies Group, L.P.

Compaq, the Compaq logo, and Evo are trademarks of Compaq Information Technologies Group, L.P.

Intel, Pentium, and Celeron are trademarks of Intel Corporation in the United States and other countries.

All other product names mentioned herein may be trademarks of their respective companies.

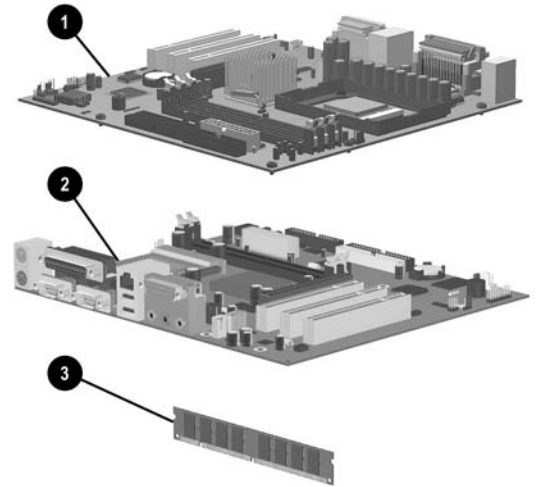
Compaq shall not be liable for technical or editorial errors or omissions contained herein. The information in this document is provided "as is" without warranty of any kind and is subject to change without notice. The warranties for Compaq products are set forth in the express limited warranty statements accompanying such products. **Nothing herein should be construed as constituting an additional warranty.**

July 2003

Document Part Number 268196-003



Spare Part Number 268318-001

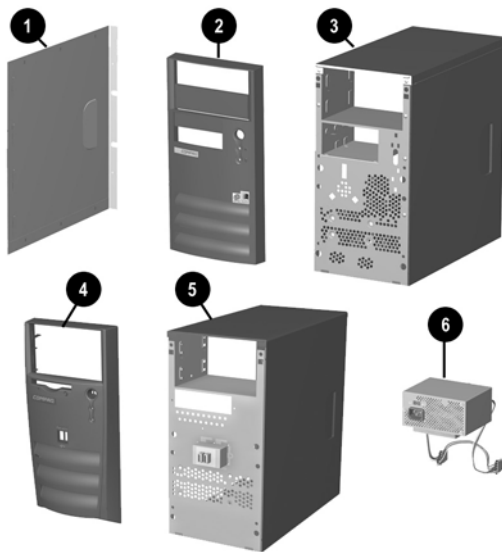


Standard and Optional Boards

1	System board, Type 1, with alcohol pad and thermal grease	263997-001
2	System board, Type 2, with alcohol pad and thermal grease	280318-001
3	Memory module, 128 MB	170081-001
Intel Pentium 4 Processor with alcohol pad and thermal grease		
*	1.6 GHz	255434-001
*	1.7 GHz	252919-001
*	1.8 GHz	255435-001
Other Cards		
*	Modem, V.90	166358-002

* Not shown

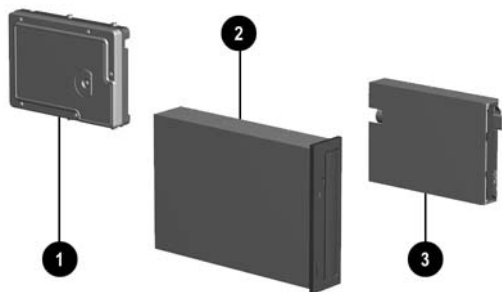
COMPAQ



System Unit

*	Access Panel, Type 1 chassis	257659-001
1	Access Panel, Type 2 chassis	Not spared
2	Front bezel with bezel blank, Type 1	251617-001
3	Chassis assembly, Type 1	Not spared
4	Front bezel with bezel blank, Type 2	280560-001
5	Chassis assembly, Type 2	Not spared
6	Power supply, PFC, 250W	263999-001
*	Power supply, 250W	263998-001

* Not shown

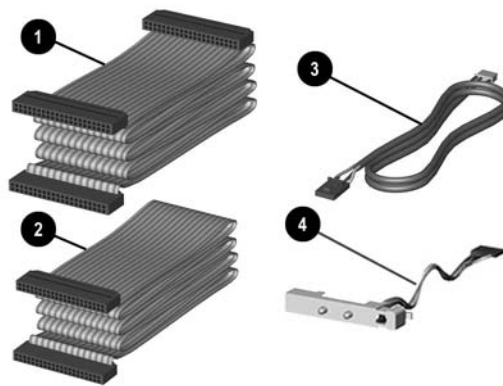


Mass Storage Devices

1	20-GB hard drive, 5400 RPM	197799-001
2	48X CD-ROM drive	253105-001
3	Diskette drive, 3.5-inch	251629-001

Documentation and Packaging (not illustrated)

Service Reference Guide	259968-001
Quick Troubleshooting Guide	153837-001
Illustrated Parts Map	268318-001
Return kit	207742-001



Cables

1	Diskette drive cable, Type 1	271723-001
*	Diskette drive cable, Type 2 (90110126)	253110-001
2	Hard drive data cable, Type 1	271721-001
*	CD-ROM cable, Type 1	271722-001
*	Hard drive & CD-ROM cable, Type 2 (90110127)	253111-001
3	Audio cable, Type 1	271720-001
*	Audio cable, Type 2 (90110125)	251621-001
*	AC Power cord - U.S.	142766-001
*	AC Power cord - People's Republic of China	292657-AA1
*	AC Power cord - U.K.	121259-001
*	AC Power cord - Brazil/Argentina	158878-201
4	LED power switch assembly	251620-001

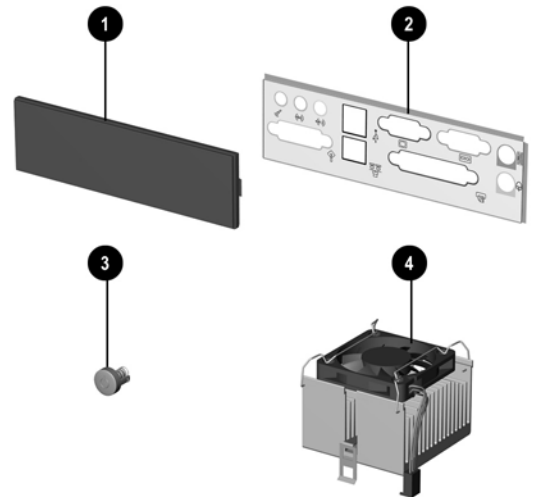
* Not shown

Miscellaneous Screws, Types 1 & 2 (not illustrated)

Miscellaneous screw kit, includes:	253112-001
#6-32 x 1/4" long hex head (4 ea)	
#6-32 x 3/16" long round head (3 ea)	
M3 x 6 mm long hex head (14 ea)	

Miscellaneous Screws, Type 3 (not illustrated)

Miscellaneous screw kit, includes:	280561-001
T15 Torx slotted #6-32 x 0.236" long hex head (4 ea)	
T15 Torx, slotted #6-32 x 0.157" long round head (4 ea)	
T15 Torx slotted M3 x 6 mm long hex head (14 ea)	



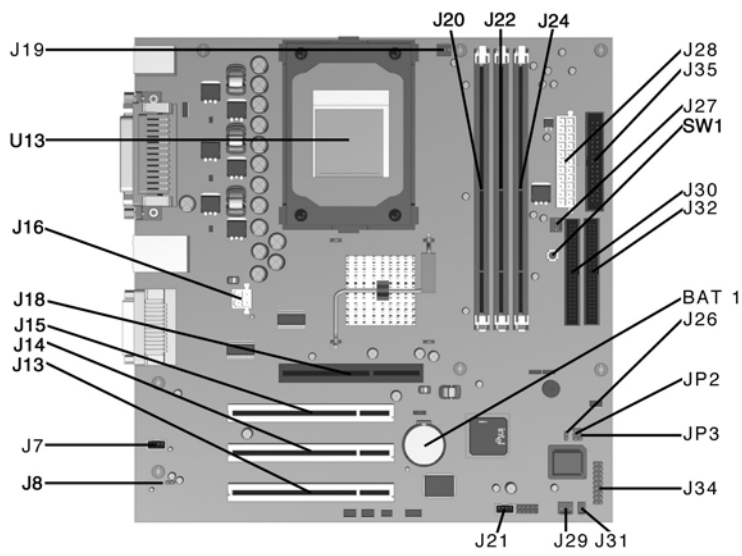
Miscellaneous Parts

1	Bezel blank	251618-001
2	I/O panel	273442-001
3	Power button with spring	251619-001
4	Heatsink, up to 2.4 GHz	268155-001
*	Battery, real-time-clock	153099-001
*	Mouse, 2-button, with shield CBI	237241-001

* Not shown

Keyboards (not illustrated)

United States	251623-001
Canadian French	251623-121
Latin American Spanish	251623-161
Japanese (Kanji)	251623-291
People's Republic of China	251623-AA1
Taiwan	251623-AB1



System Board Connectors and Jumpers, Type 1 Chassis

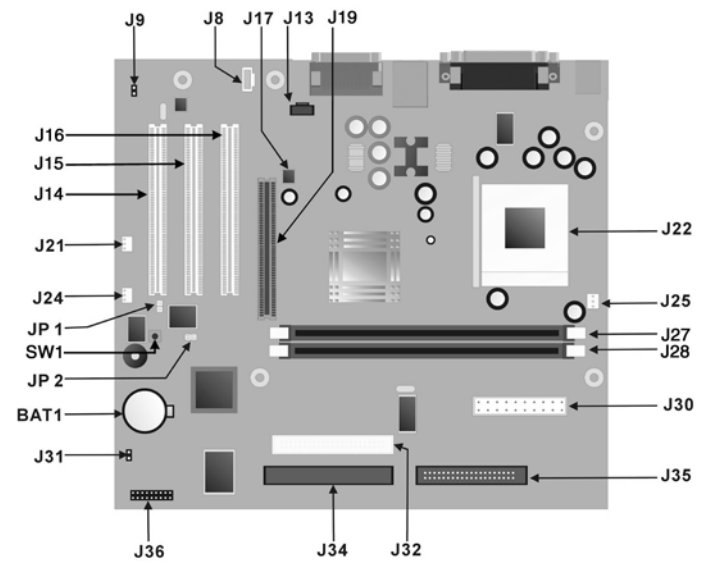
BAT1	External battery	J28	Main power connector
J7	Aux audio in connector	J29	Chassis fan
J8	Mono audio out	J30	Secondary IDE connector
J12	CD audio in connector	J31	SCSI LED connector
J13, 14, 15	PCI card sockets	J32	Primary IDE connector
J16	ATX 12V	J34	Power-On switch and LED connector
J18	AGP card socket	J35	Diskette drive connector
J19	Processor (CPU) fan	JP2*	ROM BIOS lock
J20, 22, 24	Memory slots	JP3**	Safe mode
J21	Wake on LAN connector	SW1	CMOS button
J26	Chassis intrusion connector (not used)	U13	Processor
J27	System fan (power supply)		

*Default shipping configuration is with Pins 2 & 3 jumpered.
 **Default shipping configuration is with Pins 1 & 2 jumpered.

Interrupts, Type 1

IRQ	System Resource	IRQ	System Resource
NMI	I/O channel check	8	Real-time Clock
0	Reserved, interval timer	9	Reserved for ICH2 system management bus
1	Reserved, keyboard buffer full	10	User available
2	Reserved, cascade interrupt from slave PIC	11	User available
3	Serial Port* (COM 2)(user available if COM2 is not present)	12	Onboard mouse port (user available if not present)
4	Serial Port* (COM 1)	13	Reserved, math coprocessor
5	LPT2 (Plug and Play option)/audio /user available	14	Primary IDE controller (user available if not present)
6	Diskette drive controller	15	Secondary IDE controller (user available if not present)
7	Parallel Port* (LPT 1)		

*Default, but can be changed to another IRQ.



System Board Connectors and Jumpers, Type 2 Chassis

BAT1	External battery	J28	Main power connector
J7	Aux audio in connector	J29	Chassis fan
J8	Mono audio out	J30	Secondary IDE connector
J12	CD audio in connector	J31	SCSI LED connector
J13, 14, 15	PCI card sockets	J32	Primary IDE connector
J16	ATX 12V	J34	Power-On switch and LED connector
J18	AGP card socket	J35	Diskette drive connector
J19	Processor (CPU) fan	JP2*	ROM BIOS lock
J20, 22, 24	Memory slots	JP3**	Safe mode
J21	Wake on LAN connector	SW1	CMOS button
J26	Chassis intrusion connector (not used)	U13	Processor
J27	System fan (power supply)		

*Default shipping configuration is with Pins 2 & 3 jumpered.
 **Default shipping configuration is with Pins 1 & 2 jumpered.

Interrupts, Type 2

IRQ	System Resource	IRQ	System Resource
NMI	I/O channel check	8	Real-time Clock
0	Reserved, interval timer	9	Reserved for ICH2 system management bus
1	Reserved, keyboard buffer full	10	User available
2	Reserved, cascade interrupt from slave PIC	11	User available
3	Serial Port* (COM 2)(user available if COM2 is not present)	12	Onboard mouse port (user available if not present)
4	Serial Port* (COM 1)	13	Reserved, math coprocessor
5	LPT2 (Plug and Play option)/audio /user available	14	Primary IDE controller (user available if not present)
6	Diskette drive controller	15	Secondary IDE controller (user available if not present)
7	Parallel Port* (LPT 1)		

*Default, but can be changed to another IRQ.

Clearing CMOS and Passwords

The computer's configuration (CMOS) may occasionally be corrupted. If it is, it is necessary to clear the CMOS memory using switch SW1.

To clear and reset the configuration, perform the following procedure:

1. Prepare the computer for disassembly.

2. Remove the access panel.
3. Press the CMOS button located on the system board and keep it depressed for 5 seconds.
4. Replace the access panel.
5. Turn the computer on.
6. Run Computer Setup (delete-utility) to reconfigure the system.

*When the CMOS button is pushed both the power-on password and the setup password become invalid because both are stored in the configuration memory. You will need to reset the passwords.

Setting the Supervisor and Power-On Passwords

A. Setting the Supervisor Password provides access protection for the Computer Setup utility.

1. Turn off the computer, restart, then hold down the DEL key until the Computer Setup utility begins.
2. Select "Set Supervisor Password," press enter, and follow the screen instructions.
3. The password will be enabled after saving settings and exiting the utility.

B. Setting a Power-On Password.

NOTE: A Supervisor Password must have been previously set. That same password will be used for the Power-On Password.

1. Turn on the computer, then hold down the DEL key until the Computer Setup utility begins.
2. Select Advanced CMOS Setup--> Password Check.
3. Select "Always" from the Available Options list.
4. The password will be enabled after saving settings and exiting the utility.

NOTE: Clearing passwords clears both the Supervisor and Power-On Passwords, but does not clear the "Always" option. To reset only the Supervisor Password, change "Always" to "Setup" on the available Options list.

NOTE: Clearing CMOS clears the Power-On Password. It does NOT clear the Supervisor Password.

Free Manuals Download Website

<http://myh66.com>

<http://usermanuals.us>

<http://www.somanuals.com>

<http://www.4manuals.cc>

<http://www.manual-lib.com>

<http://www.404manual.com>

<http://www.luxmanual.com>

<http://aubethermostatmanual.com>

Golf course search by state

<http://golfingnear.com>

Email search by domain

<http://emailbydomain.com>

Auto manuals search

<http://auto.somanuals.com>

TV manuals search

<http://tv.somanuals.com>