

Notice

© 2000 Compaq Computer Corporation.

COMPAQ and the Compaq logo Registered in U.S. Patent and Trademark Office.

Microsoft, Windows, and Windows NT are registered trademarks of Microsoft Corporation in the United States and/or other countries.

All other product names mentioned herein may be trademarks or registered trademarks of their respective companies.

Compaq shall not be liable for technical or editorial errors or omissions contained herein. The information in this document is subject to change without notice and is provided "as is" without warranty of any kind. The entire risk arising out of the use of this information remains with the recipient. In no event shall Compaq be liable for any direct, consequential, incidental, special, punitive, or other damages whatsoever (including without limitation, damages for loss of business profits, business interruption, or loss of business information), even if Compaq has been advised of the possibility of such damages. The limited warranties for Compaq products are exclusively set forth in the documentation accompanying such products. Nothing herein should be construed as constituting a further or additional warranty.

User's Guide

Compaq MP1800 Microportable Projector

First Edition May 2000

Published in U.S.A., U.K., Singapore, and Taiwan.

Documentation Part Number 191443-001

CONTENTS

preface

USING THIS GUIDE

Symbols and Conventions	ix
Warning Messages	x

Chapter 1

GETTING STARTED

Product Features	1-1
Introduction	1-2
Setting Up the Projector	1-4
Balancing the Projector	1-5
Connecting the Projector to a Portable Computer	1-6
Connecting the Projector to a Desktop Computer	1-8
Connecting the Projector to a Compaq PC Companion	1-10
Connecting the Projector to Other Video Sources	1-12
Powering On the Projector	1-12
Powering Off the Projector	1-14
Adjusting the Projected Image	1-14
Adjusting the Projector Height	1-15
Adjusting the Projector Focus	1-16
Adjusting the Projector Zoom	1-17
Image Size Adjustment	1-18
Using the Compaq Presentation Utility	1-19
Using the Compaq Projector Display Assistant Utility	1-20

Chapter 2

USING THE PROJECTOR

Identifying the Projector Buttons	2-1
Introducing the Analog On-Screen Menu	2-3
Analog On-Screen Menu Adjustments	2-3
Adjusting the On-Screen Menus	2-5
Explaining Functions in the Analog On-Screen Menu	2-6
Special On-Screen Messages	2-8

Chapter 3

USING THE COMPAQ MULTIMEDIA ADAPTER

Identifying the Multimedia Adapter Components..... 3-1
Attaching the Multimedia Adapter to the MP1800
 Microportable Projector 3-3
Connecting a Camcorder, Videocassette Recorder, or
 DVD Player to the Multimedia Adapter 3-4
Connecting a Video Player 3-6
Video On-Screen Menu Adjustments 3-7
 Explaining Functions in the Video On-Screen Menu 3-9

Chapter 4

USING THE REMOTE CONTROL

Identifying the Remote Control Buttons..... 4-2
Calibrating the Mouse..... 4-4
 Remote Control Functions..... 4-4
Picture-in-Picture On-Screen Adjustments 4-6
 Explaining Functions in the PIP On-Screen Menu 4-8

Chapter 5

CARE AND MAINTENANCE

Protecting the Projector 5-1
Cleaning the Lens 5-2
Replacing the Projector Lamp Module..... 5-3

appendix A

TROUBLESHOOTING A-1

appendix B

AGENCY REGULATORY NOTICES

Federal Communications Commission Notice.....	B-1
Modifications	B-1
Cables	B-2
Declaration of Conformity for Products Marked with the FCC	
Logo—United States Only	B-2
Canadian Notice	B-2
Avis Canadien	B-2
European Notice	B-3
Japanese Notice	B-3
Laser Warning	B-4
Specifications	B-5
Preset Display Resolutions Table.....	B-6
Power Cords	B-7

appendix C

FLASH ROM UPGRADE.....	C-1
-------------------------------	------------

Using This Guide

The User's Guide includes general information about your projector, troubleshooting and diagnostics, and technical specifications.

Symbols and Conventions

The following words and symbols mark special messages throughout this guide:



Text set off in this manner presents clarifying information, specific instructions, commentary, sidelights, or interesting points of view.



WARNING: Text set off in this manner indicates that failure to follow directions could result in bodily harm or loss of life.



CAUTION: Text set off in this manner indicates that failure to follow directions could result in damage to equipment or loss of information.

Warning Messages

Before operating the projector, please read the following messages.



WARNING:

- To reduce the risk of harm to your eyes, do not look directly into the bright light of the projection lens.
 - To reduce the risk of fire or electric shock, do not expose this product to rain or moisture.
 - To reduce the risk of electric shock, do not disassemble the projector other than to replace the lamp module.
 - To reduce the risk of personal injury, allow the unit to cool down before changing the lamp, and always unplug the power cord first.
-

Getting Started

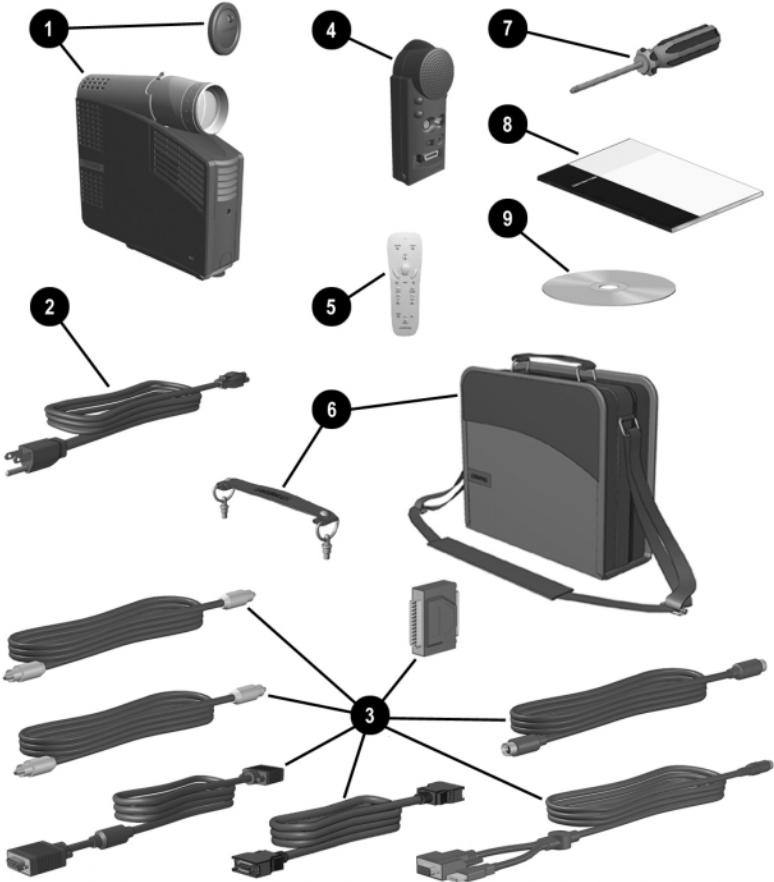
Product Features

The Compaq MP1800 Microportable Projector generates crisp, clear images onto a projection screen by using Digital Light Processing (DLP) technology. The MP 1800 Microportable Projector is Compaq's "Flagship" product offering the latest in portable projection technology, including:

- 1024 × 768 native XGA resolution
- Maximum resolution: 1280 × 1024 compression
- User replaceable 120 watt high-efficiency, long-life lamp
- Manual 1.3:1 zoom lens
- Electronic zoom to 32×
- Weighs 4.6 pounds (2.08 kg)
- Convenient auto-image adjustment
- 16.7 million displayable colors
- Flash ROM upgradeable
- Connector options:
 - Standard analog VGA
 - Digital DFP
 - S-video (with Multimedia Adapter) [optional use]
 - Composite video (with Multimedia Adapter) [optional use]
 - DVI (with Multimedia Adapter) [optional use]
- Multimedia Adapter with speaker [optional use]
- Full-featured remote control with remote mouse capabilities [optional use]
- Multilingual on-screen adjustment menu
- Plug and Play capability
- Dual projector and compact computer carrying case and carrying handle
- Compaq Presentation utility allows quick setup with portable computers
- Compaq Projector Display Assistant utility to adjust screen settings
- Security lock slot

Introduction

Before setting up your Compaq MP1800 Microportable Projector, be sure your shipping box includes the following items:



- ① Projector and lens cap
- ② 10-foot power cable
- ③ Seven signal cables and one upgrade adapter:
 - One VGA signal cable for use with computers, portables, and some handheld products
 - One digital DFP (digital flat panel) to DVI signal cable for use with compatible digital sources
 - S-video cable
 - Audio cables (2; one cable has mini connectors on both ends and is used to connect the Multimedia Adapter to a computer; the other cable has an RCA connector on one end and a mini connector on the other end and is used to connect a videocassette recorder to a computer)
 - RCA cable
8-pin to USB/RS232 Y-cable used to connect the Multimedia Adapter to a computer. When using the Y-cable, do not connect both the USB and RS232 connectors to a computer at the same time. The USB connector is the preferred connector.
NOTE: The remote control Page Up and Page Down functions work only when the USB connection is used.
 - One RS232 (serial) to DVI upgrade adapter
- ④ Compaq Multimedia Adapter
- ⑤ Remote control (includes three AAA batteries)
- ⑥ Carrying case and separate projector carrying handle
- ⑦ Phillips screwdriver
- ⑧ Two Quick Setup cards
- ⑨ CD-ROM containing the Compaq Presentation utility program, Compaq Projector Display Assistant utility, and the *User's Guide*

If your shipping box does not contain all of the listed items, please contact your Compaq authorized dealer, reseller, or service provider.

Setting Up the Projector

Follow the instructions below and on the following pages to set up the projector. Separate setup instructions are described for the following products:

- Portable and desktop computers
- Handheld computers with VGA capability
- videocassette recorder, DVD, or camcorder (requires optional Multimedia Video Adapter)



The projector is hot pluggable and can be connected to any video input source while the source is in use.

IMPORTANT: Place the projector on a stable desk or table at a distance not less than 4.92 feet (1.5 meters) and not greater than 16.4 feet (5 meters) from the projection screen.



WARNING: To reduce the risk of electric shock or damage to your equipment:

- Do not disable the power cord grounding plug. The grounding plug is an important safety feature.
 - Plug the power cord into a grounded (earthed) electrical outlet that is easily accessible at all times.
 - Disconnect power from the projector by unplugging the power cord from the electrical outlet.
 - Do not place anything on power cords or cables. Arrange them so that no one may accidentally step on or trip over them. Do not pull on a cord or cable. When unplugging from the electrical outlet, grasp the cord by the plug.
-

Balancing the Projector

The projector has a built-in elevator foot used to balance and elevate the projector. Always balance the projector before connecting any device to it.

Turn the elevator foot sideways to balance the projector.



WARNING: To reduce the risk of the projector tipping or overturning, always turn the elevator foot 90 degrees from its original position before pressing the elevator button. Refer to the “Adjusting the Projector Height” section later in this chapter.

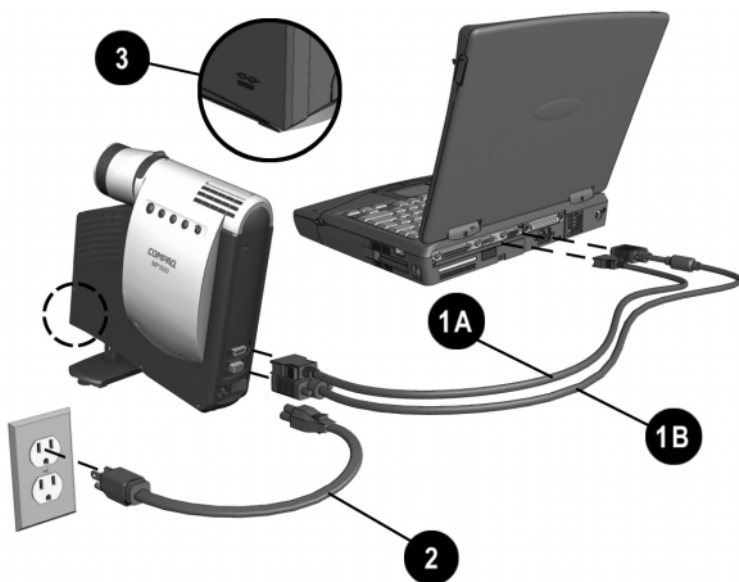
Connecting the Projector to a Portable Computer

1. Rotate the elevator foot to balance the projector.
2. Connect one end of the projector signal cable to the projector and the other end to the VGA connector **1B** or the DFP connector **1A** on the portable computer and tighten the screws.



Be sure the signal cable aligns with the connector. Do not force the cable onto the connector or you may damage the signal cable or the projector.

3. Connect one end of the power cord **2** into the back of the projector, and the other end to an electrical outlet that is easily accessible and close to the projector.



4. Turn on the projector first, then turn on the computer. Refer to the “Powering On the Projector” section later in this chapter for instructions on turning on the projector.



For security purposes, this projector has been fitted with a security lock slot **3** (located on the left, front side) for use with a security cable lock that can be purchased separately at most computer stores.

Connecting the Projector to a Desktop Computer

1. Rotate the elevator foot to balance the projector.
2. Connect one end of the projector signal cable **1B** to the projector and the other end to the VGA connector on the desktop computer and tighten the screws.

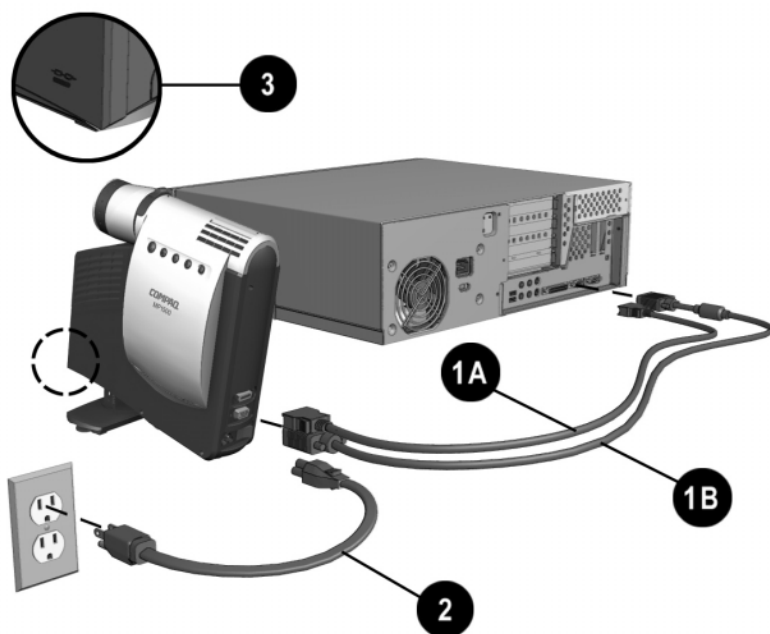


If your computer has a digital connector, connect one end of the digital flat panel (DFP) signal cable **1A** to the digital connector on the projector and the other end to the digital connector on the computer.



Be sure the signal cable aligns with the connector. Do not force the cable onto the connector or you may damage the signal cable or the projector.

3. Connect one end of the power cord **2** into the back of the projector, and the other end to an electrical outlet that is easily accessible and close to the projector.



For security purposes, this projector has been fitted with a security lock slot ③ (located on the left, front side) for use with a security cable lock that can be purchased separately at most computer stores.

4. Turn on the projector first, then turn on the computer. Refer to the “Powering On the Projector” section later in this chapter for instructions on turning on the projector.

Connecting the Projector to a Compaq PC Companion

To connect the projector to a Compaq PC Companion, the PC Companion must have a male connector adapter and a VGA-out PC Card with a 15-pin connector.



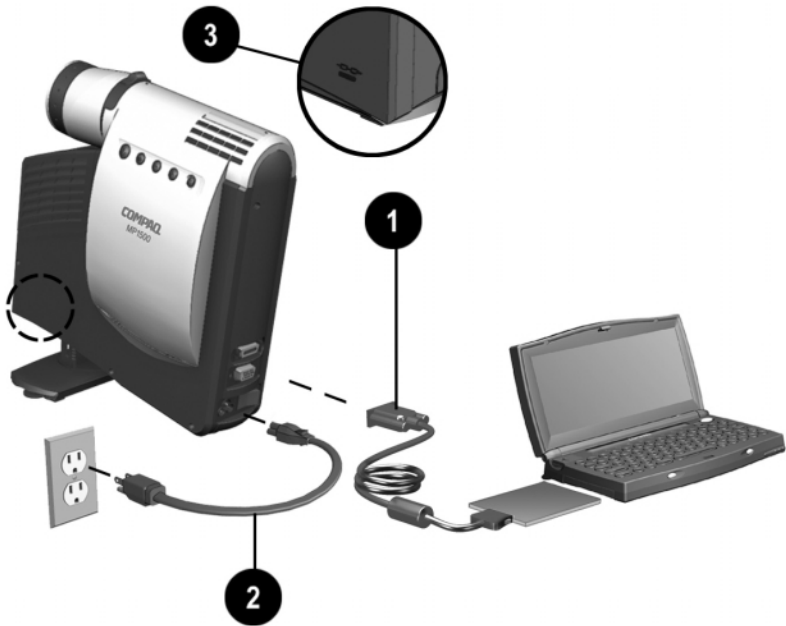
The VGA-out PC Card with the 15-pin connector is not included with the Compaq PC Companion. It is sold separately. For information on purchasing this card, call your Compaq authorized dealer or reseller. To locate a reseller near you, call Compaq at 1-800-AT-COMPAQ or visit the Compaq web site at <http://www.compaq.com>.

1. Rotate the elevator foot to balance the projector.
2. Connect one end of the signal cable **1** to the projector and connect the other end to the VGA-out PC Card. The VGA-out PC Card may be inserted into the PC slot on the Compaq PC Companion before or after connecting the signal cable.



Be sure the signal cable aligns with the connector. Do not force the cable onto the connector or you may damage the signal cable or the projector.

3. Connect one end of the power cord **2** into the back of the projector, and the other end to an electrical outlet that is easily accessible and close to the projector.



For security purposes, this projector has been fitted with a security lock slot **3** (located on the left, front side) for use with a security cable lock that can be purchased separately at most computer stores.

4. Turn on the projector first, then turn on the computer. Refer to the “Powering On the Projector” section later in this chapter for instructions on turning on the projector.

Connecting the Projector to Other Video Sources


The optional Compaq Multimedia Adapter must be used to connect the projector to a camcorder, DVD player, or videocassette recorder. This adapter converts signals from the camcorder, DVD player, or videocassette recorder for compatibility with the projector.

Refer to Chapter 3, “Using the Compaq Multimedia Adapter,” for information on attaching and using the Compaq Multimedia Adapter.

Powering On the Projector

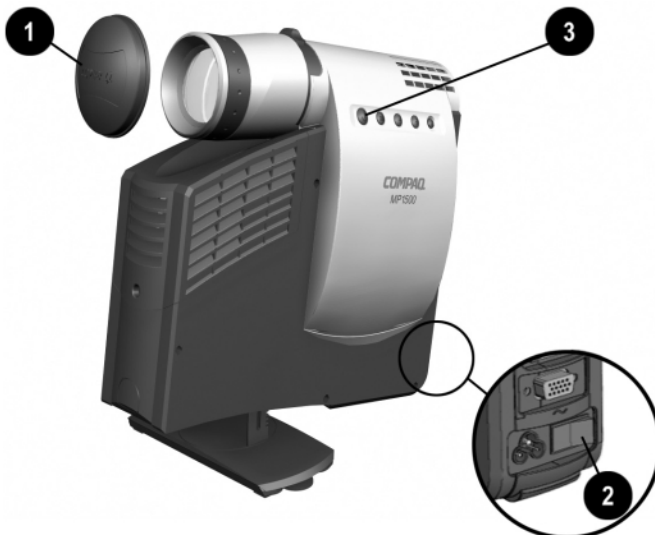
Follow these instructions to power on the projector:

1. Make sure the computer and projector power cords and the signal cable are securely connected.

 Make sure the projector is perpendicular to the projection screen.

2. Remove the lens cap **1** by pulling it straight out.
3. Turn on the main power switch **2** on the back of the projector and allow the projector to warm up for one to two minutes.

When the projector has warmed up, the Compaq startup screen displays and the LED on the **Standby** button **3** turns green.



4. Turn on the video source (computer, PC Companion, videocassette recorder, etc.) and launch the software application being used to display images on the projection screen. If applicable, press the Function key on the computer designated for external display.



If there is a long delay between the time the startup screen displays and the time the presentation software is launched, the lamp may shut off and the projector will automatically go into standby mode. If this happens, press the **Standby** button to power on the lamp.



When the startup screen disappears, the video from the attached computer displays. If there is no incoming video, the “Check Video Cable” message will display on the projection screen.

Powering Off the Projector

1. Press the **Standby** button to turn off the projector lamp.

The message “Going to Standby” displays and the LED on the **Standby** button blinks amber.

IMPORTANT: Allow the projector to cool down for about five to ten minutes before turning it off.

2. Turn off the main power switch on the back of the projector.
3. Disconnect the power cord from the electrical outlet and the projector.



CAUTION: After the projector is turned off, wait at least one minute before turning the projector back on. Failure to follow this caution can result in damage to the projector.

Adjusting the Projected Image

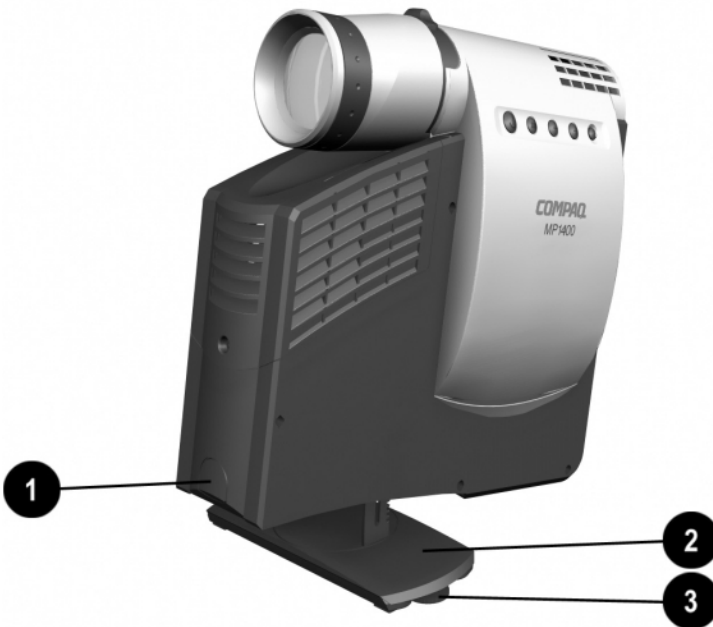
There are three ways to adjust the projected image:

- Adjusting the projector height
- Adjusting the projector focus
- Adjusting the projector zoom

Adjusting the Projector Height

The projector has a built-in elevator foot that can raise the projector approximately 1 inch. To adjust the height:

1. Ensure the foot is turned 90° to balance the projector.
2. Raise the projector to the desired display angle, then press the elevator button **1** to release the elevator foot **2**.



3. To lower the display angle, press the elevator button again and press down on the projector to lower it.



CAUTION: Failure to press the elevator button before adjusting the elevator foot can result in damage to the elevator mechanism.



To fine-tune the leveling of the projector, rotate the knobs ③ on either side of the foot and adjust the leveling.

Adjusting the Projector Focus

To focus the projected image, rotate the focus ring ① until the image is clear. The projector will focus at distances from 4.92 (1.5 meters) to 16.4 feet (5 meters).

If vertical bars appear on the display after adjusting the focus, press the **Resync** button ② to automatically synchronize and track the display. If the button does not correct the display, use the Digital Conversion feature in the on-screen menu to manually adjust the synchronization and tracking. Refer to the “Adjusting the On-Screen Menus” section in Chapter 2.

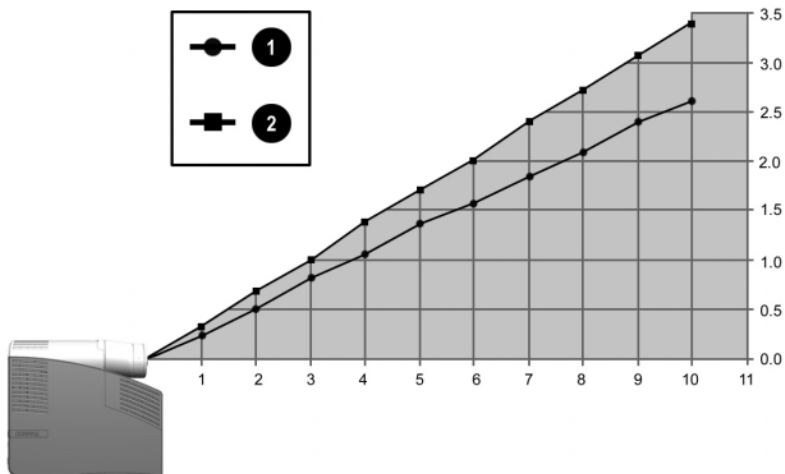


Adjusting the Projector Zoom

To adjust the size of the projected image, rotate the zoom lever until the projected image is the desired size.



Image Size Adjustment



Projected image sizes at minimum zoom ①

Distance	1m	2m	3m	4m	5m	6m	7m	8m	9m	10m
Diagonal	.44m	.87m	1.31m	1.74m	2.18m	2.61m	3.05m	3.48m	3.92m	4.36m
Width	.35m	.70m	1.05m	1.39m	1.74m	2.09m	2.44m	2.79m	3.14m	3.48m
Height	.26m	.52m	.78m	1.05m	1.31m	1.57m	1.83m	2.09m	2.35m	2.61m

Projected image sizes at maximum (1.3) zoom ②

Distance	1m	2m	3m	4m	5m	6m	7m	8m	9m	10m
Diagonal	.57m	1.13m	1.70m	2.26m	2.83m	3.40m	3.96m	4.53m	5.10m	5.66m
Width	.45m	.91m	1.36m	1.81m	2.26m	2.72m	3.17m	3.62m	4.08m	4.53m
Height	.34m	.68m	1.02m	1.36m	1.70m	2.04m	2.38m	2.72m	3.06m	3.40m



If the projector is used at the maximum distance in this chart, the display may appear to be dimmer than usual.

Using the Compaq Presentation Utility

The Compaq Presentation utility included on the CD-ROM is for use with portable computers. The purpose of the Presentation utility is to disable power management features of the portable computer while the Compaq MP1800 Microportable Projector is connected to it. The utility also disables the computer's screen savers and auto-suspend feature while the utility is running.

A graphical user interface (GUI) is required to control the projector's resolution settings and the enabled/disabled status. The Compaq Presentation utility supports the following GUI operating systems: Microsoft Windows 95, Windows 98, Windows NT 4.0, and Windows 2000.

To install the Presentation utility onto a portable computer:

1. Insert the CD-ROM into the computer's CD-ROM drive. The CD-ROM menu will automatically launch on the screen.
2. From the launch menu, click "Install Software→Install Presentation Utility" and follow the on-screen instructions.
3. Select Next in the dialog box to install the program. The Presentation utility installs on the hard drive and you are prompted to restart the computer. Upon restart, a program icon (yellow beam of light containing a Q) is placed in the Windows system tray.
4. Double-click the program icon to launch the Presentation Properties dialog box.
5. Set the Presentation Mode Duration time in the dialog box.
The dialog box has default settings enabled to turn off the computer's power management features and screen saver features.
6. Select OK from the dialog box to execute the settings. The software dialog box closes and the computer is ready to continue with the presentation.

The Presentation utility is provided on the CD-ROM in the following languages: English, Dutch, French, German, Italian, and Spanish. When the installation is executed, the appropriate language is installed on the computer based on the computer's operating system language. If the computer's operating system language is not included as one of the six languages above, then, by default, the English version will install on the computer.

Using the Compaq Projector Display Assistant Utility

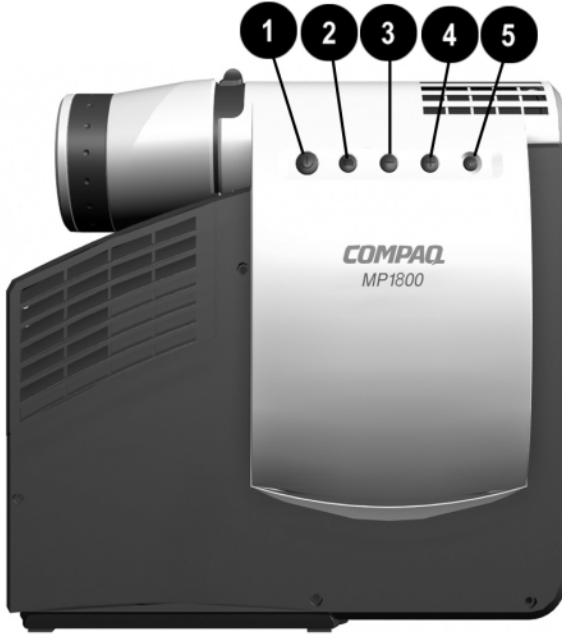
The Compaq Projector Display Assistant utility included on the CD-ROM is an adjustment tool for improving the display quality of the projector. Adjustments need to be made when the projector is first attached to a computer or when a different display mode is selected for the first time. This utility can be run directly from the CD-ROM or copied to a directory on the computer hard drive and run from there.

To run the Projector Display Assistant utility for Microsoft Windows 95, Windows 98, Windows NT 4.0, or Windows 2000:

1. Insert the CD-ROM into the computer's CD-ROM drive. The CD-ROM menu will automatically launch on the screen.
2. From the launch menu, click "Install Software→Install Compaq's Projector Display Assistant" and follow the on-screen instructions.

Using the Projector

Identifying the Projector Buttons



Symbol Control

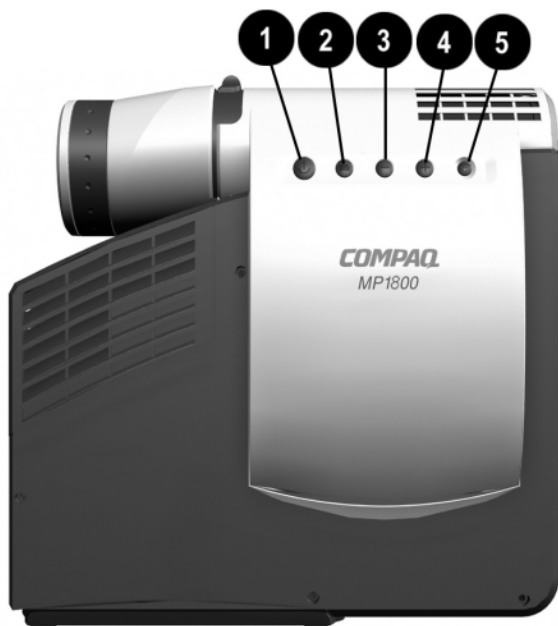
①  Standby button

Function



Powers the projector lamp on and off. The Standby LED changes color modes to indicate the following operating modes:

1. Green glow indicates power is on.
2. Amber glow indicates warmup or suspend modes.

Continued



Projector Components *(continued)*

Symbol	Control	Function
❶	 Standby button	<p>Powers the projector lamp on and off. The Standby LED changes color modes to indicate the following operating modes:</p> <p>3. Flashing amber indicates the projector is going into standby mode and cannot be restarted until the LED glows amber steadily.</p> <p>4. All five LED buttons rapidly flashing amber indicate the lamp has overheated and the projector has automatically shut down.</p>
❷	 Select button	<p>1. Launches first, second, and third-level on-screen menus.</p> <p>2. Exits the on-screen menus.</p>
❸	— Minus button	Selects and adjusts the on-screen menu functions.
❹	+ Plus button	Selects and adjusts the on-screen menu functions.
❺	R Resync button	Automatically synchronizes the projector to track the input source.

IMPORTANT: To use standby mode, press the **Standby** button and, after a six to ten-second delay, the unit enters standby mode and the projector lamp turns off. A “Going to Standby” message appears on the screen for the duration of the six to ten-second delay. When the message disappears from the screen, there is a 45-second delay before the lamp can be turned back on. Wait 45 seconds to allow the lamp to cool before pressing the **Standby** button again.

Introducing the Analog On-Screen Menu

The adjustments for screen settings are located in the on-screen menu and can be viewed in one of seven available languages.

Analog On-Screen Menu Adjustments

To display the analog on-screen menu, press the **Select** button. The following menu shows the functions at each level:

Main Menu	Menu Level 2	Menu Level 3
Brightness	Adjustment scale	
Contrast	Adjustment scale	
Position	Horizontal Position	Adjustment scale
	Vertical Position	Adjustment scale
	Save and Return	
	Cancel	
Zoom	Zoom	Adjustment scale
	Panning Left-Right	Adjustment scale
	Panning Up-Down	Adjustment scale
	Save and Return	
	Cancel	
Keystone	Adjustment scale	
Picture	Dark - Light	
Color	(Color temperature)	
	Custom Color	Adjustment scale
	Saturation	Adjustment scale
	Save and Return	
Digital Conversion	Clock	Adjustment scale
	Clock Phase	Adjustment scale
	Save and Return	
	Cancel	

Continued

Analog On-Screen Menu *(continued)*

Main Menu	Menu Level 2	Menu Level 3
Language	Deutsche English Espanol Francais Italiano Nederlands Brazilian Portuguese Save and Return	
Menu Location	Up-Down Left-Right Save and Return Cancel	Adjustment scale Adjustment scale
Management	Power Saver Lamp Hours Reset Lamp Hours Flip Image Serial Number Master Reset Save and Return Cancel	On-Off Display hours - 5 digits Confirmation Horizontal Vertical Both Save and Return Cancel Display Serial Number Confirmation
Factory Reset	Confirm Reset	
Exit		

Adjusting the On-Screen Menus

To launch and make adjustments to the Main and Video on-screen menus:

1. Press the **Select** button ❶ on the projector panel or the remote control. The Main menu will display on the projection screen.
2. To select a function, press the **Minus** (-) button ❷ to scroll down the Display menu. To reverse the scroll direction, press the **Plus** (+) button ❸.
3. Highlight the function to be adjusted and press the **Select** button ❶ again.

Main Menu
Select with +/-
Brightness
Contrast
Position
Zoom
Keystone
Picture
Color
Digital Conversion
Language
Menu Location
Management
Factory Reset
Exit
Pre-set: 1024x768 75Hz



The bar on the bottom of the on-screen menu shows the current operating resolution.

For example, to select the **Position** function, press the **Minus** button ❷ until **Position** is highlighted, then press the **Select** button ❶ to display the level 2 menu for **Position**. The level 2 menu displays expanded menu items.

4. To make a selection from the level 2 menu, press the **Minus (-)** button to scroll down the level 2 menu, or press the **Plus (+)** button to reverse the scroll direction.
5. Highlight the selection and press the **Select** button to confirm the selection. The level 3 menu displays.
6. Level 3 for **Position** functions display the adjustment scales. Use the **Minus** button to decrease and the **Plus** button to increase the screen Horizontal and Vertical positions.



Some menu functions display adjustment scales in the level 2 menu, while others display adjustment scales in the level 3 menu.

7. After making the adjustment, select **Save and Return**. To void any changes made, select **Cancel** instead of **Save and Return**.
8. To exit from the on-screen menu, select **Exit** from the Main menu. If the display is a second or third-level menu, select **Save and Return** or **Cancel**, then select **Exit** from the Main menu.

Explaining Functions in the Analog On-Screen Menu

- **Brightness and Contrast**—Adjusts the displayed image brightness and contrast ranges from 0 to 100.



An example of a standard setting is to set the contrast level to 67 and the brightness level to 50.

- **Position**—Fine-tunes the horizontal and vertical positions of the display.
- **Zoom**—Magnifies an image up to a factor of 32 on the projection screen (zooms in to a specific area on the screen, and pans left, right, up, and down).
- **Keystone**—Adjusts image distortion at the top and bottom widths of the screen caused by tilting the projector.
- **Picture**—Adjusts the gamma value or degree of contrast of darkness or light for the projected image.

- **Color**—Adjusts color balance to compensate for ambient conditions using three submenus:
 - **Factory default.**
 - **Custom Color**—Modifies the color temperature balance.
 - **Saturation**—Magnifies the color intensity.
- **Digital Conversion**—Improves picture stability of user modes by adjusting:
 - **Clock**—Increase/decrease the value to stretch or shrink the image on the screen.
 - **Clock Phase**—Increase/decrease the value to minimize video distortion or video jitter.



If the projector image becomes distorted when adjusting the Clock and Clock Phase values, continue adjusting the values until the distortion disappears. To restore the factory settings, select Factory Reset in the on-screen menu, or press the **Resync** button.

- **Language**—Allows the user to change the On-Screen display to one of seven languages in their native spelling. The current language is highlighted. Select another language to display all menu functions in that language.
- **Menu Location**—Positions the on-screen menu at a convenient location on the projector screen; positions the menu up or down, left or right.
- **Management**—Allows the user to control power saver characteristics of the display, or to view the cumulative lamp hours, reset the lamp hour timer, view the unit's serial number, or perform a Master Reset.
- **Factory Reset**—Resets the current operating option to its original factory setting.

Special On-Screen Messages

Special on-screen messages will appear on the projection display to identify the following conditions:

- **Check Video Cable:** Indicates the video cable may not be plugged into the projector or the selected video input is not accurate.
- **Input Signal Out of Range**—Indicates the projector is unable to access the appropriate input signal.
- **2 Inputs Active - Remove One**—The projector has two data inputs: one is an analog D-Sub input and the other is a digital DFP input. This message indicates that both inputs are active simultaneously and the user should detach one of them.

NOTE: This message appears only when the Multimedia Adapter is not attached to the projector.
- **Going to Standby**—Indicates the projector is entering a sleep mode or is powering off the lamp.
- **Lamp May Fail Soon, Replacement Suggested**—Indicates the lamp is approaching failure. The message will remain on the screen for five seconds or until the on-screen menu **Select** button is pressed.

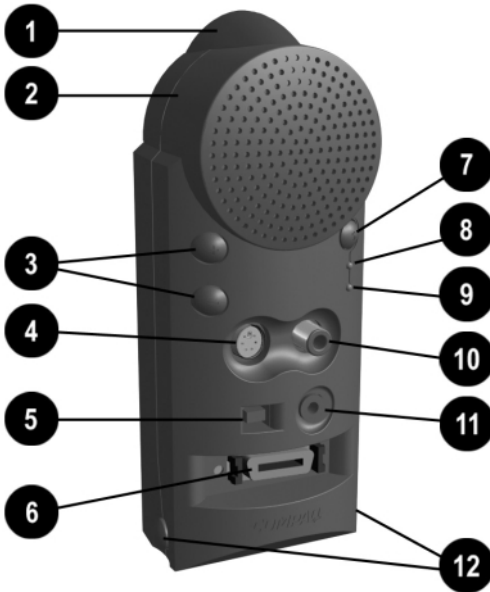
When the Multimedia Adapter is attached to the projector, the following messages, in addition to the previous messages, will appear on the projection display to identify the following conditions:

- **Analog, Use Source to Change Input**—Indicates analog and DVI inputs are connected. Since the projector will default to display analog, you must press the **Source** button to switch to DVI.
- **DVI, Use Source to Change Input**—Indicates DVI along with other video and/or analog sources present. Analog is the default setting. Press the **Source** button to switch to DVI.
- **Analog, Use PIP for Picture in Picture or Use Source to Change Input**—Indicates analog plus video and DVI are present. Analog is the default setting. Press the **PIP** button on the remote control for picture in picture or change the setting by pressing the **Source** button.
- **Composite Video, Use Source to Change Input**—Indicates composite video or other inputs are present. Composite video is the default setting. Press the **Source** button to the setting.
- **S-video, Use Source to Change Input**—Indicates S-video with other inputs are active. Press the **Source** button to change the setting.

Using the Compaq Multimedia Adapter

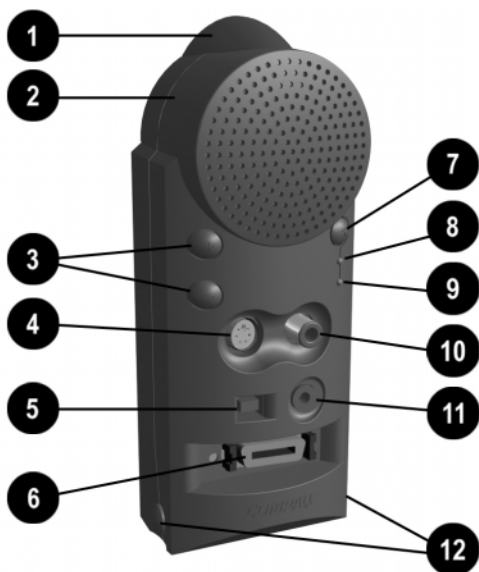
The Compaq Multimedia Adapter is specifically designed to fit the Compaq MP1800 Microportable Projector. This adapter enables signals from camcorders, DVD players, or videocassette recorders to be shown through the projector. To connect the projector to a camcorder, DVD player, or videocassette recorder, you need to connect the Compaq Multimedia Adapter to the projector.

Identifying the Multimedia Adapter Components



Item	Component	Function
①	Infrared Receiver	Interprets signals received from the remote control
②	Speaker	Provides audio performance
③	Volume +/-	Increases/decreases volume
④	S-Video port	Connects camcorders or DVD players

Continued

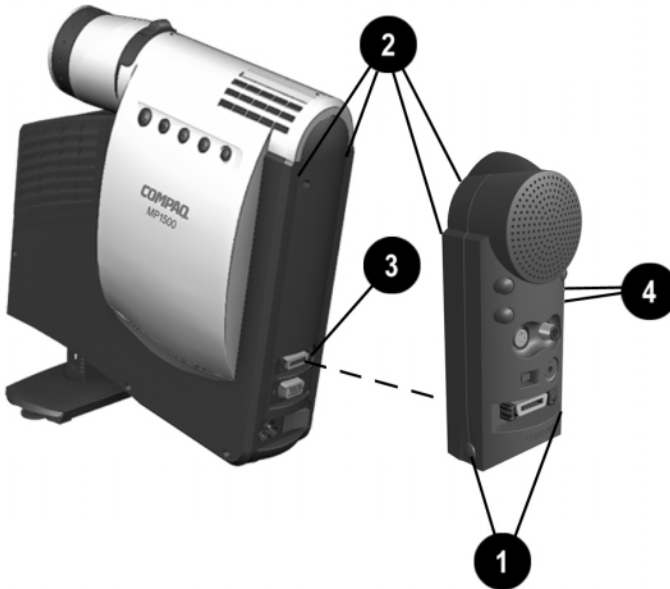


Multimedia Adapter components (continued)

Item	Component	Function
⑤	8-pin connector	Connects back to the computer allowing remote mouse functionality
⑥	DVI port	Connects digital equipment
⑦	Source button	Selects between all sources
⑧	Video LED	When lit, indicates video input
⑨	Computer LED	When lit, indicates computer input
⑩	Video/RCA port	Connects video equipment
⑪	Audi-in jack	Connects audio equipment, videocassette recorders and DVD players, allowing sound to be played.
⑫	Install buttons	Use to install adapter on projector

Attaching the Multimedia Adapter to the MP1800 Microportable Projector

1. Press the two buttons ❶ on the bottom of the Multimedia Adapter.
2. Insert the hooks on top of the Multimedia Adapter into the upper slots ❷ on the projector by inserting and pushing upward, then insert the adapter plug into the digital connector ❸ on the back of the projector.
3. Release the buttons on the sides of the Multimedia Adapter to complete the connection.



When the adapter is activated, one of the LEDs ❷ on the Multimedia Adapter turns green.

Connecting a Camcorder, Videocassette Recorder, or DVD Player to the Compaq Multimedia Adapter

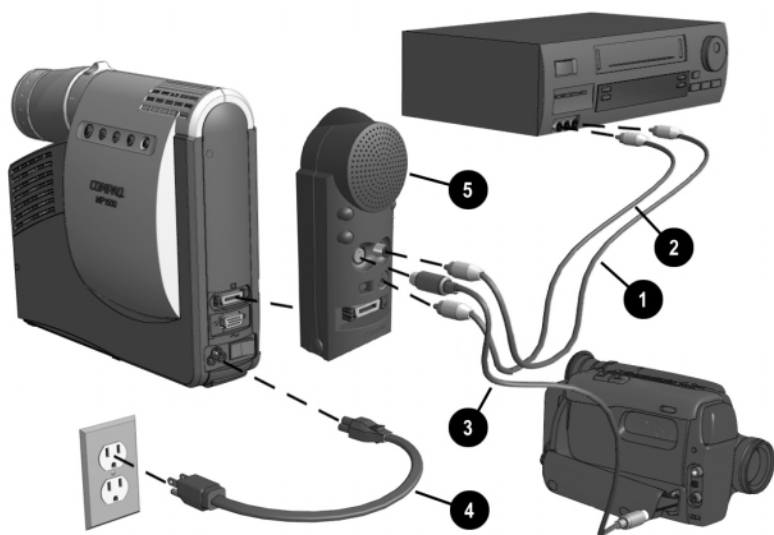


A rubber boot cover protects the DFP (digital) connector on the projector. Be sure to remove the cover before connecting the Multimedia Adapter to the projector and replace the cover when the projector is not in use to prevent electrostatic discharges from damaging the connector.

1. Use an RCA cable to connect a videocassette recorder to the video connector **❶** on the Multimedia Adapter. To play audio through the Multimedia Adapter, connect an audio cable to the source audio-out jack and the audio-in jack on the Multimedia Adapter **❷**.

Use an S-video cable to connect a camcorder or DVD player to the S-video connector **❸** on the Multimedia Adapter.

2. Connect one end of the power cord **❹** into the back of the projector and the other end to an electrical outlet that is easily accessible and close to the projector.
3. Press the **Source** button **❺** on the Multimedia Adapter to select different input sources.



The Compaq Multimedia Adapter can remain attached to the projector, or it can be removed and stored in the carrying case.

Connecting a Video Player



If your video player uses a round, one-prong composite video connector, use the RCA video cable. If your video player uses a round, four-prong S-video connector, use the S-video cable. Both cables are included with the Compaq Multimedia Adapter.

1. Plug the RCA video cable into the video-out port on the video player and the video port on the video adapter. If you are using the S-video cable, connect it to the S-video out connector on the video player and the S-video port on the video adapter.
2. Turn on the projector first, then the video player.
3. Press the **Source** button on the back of the Multimedia Adapter to switch the projector signal from data (computer icon) to video (TV icon). The data mode receives computer inputs and the video mode receives video input such as a TV tuner, videocassette recorder, or camera.

With the Compaq Multimedia Adapter attached, the projector is compatible with major video standards such as NTSC, PAL, and SECAM. Use the on-screen menu to adjust the video performance manually or press the **Resync** button to optimize it automatically.

Video On-Screen Menu Adjustments

When the Multimedia Adapter is attached to the projector and the video source is selected, an alternate video on-screen menu can be displayed on the projected screen. This menu includes some selections that are relevant to the functions of the Multimedia Adapter.

To display the video on-screen menu:

1. Attach the Multimedia Adapter to the projector.
2. Attach a video source to the projector.
3. Set the **Source** button on the adapter or remote control to video.
4. Press the **Select** button on the projector or the **Menu** button on the remote control to display the following menu:

Video Menu	Video Menu Level 2	Video Menu Level 3
Brightness	Adjustment scale	
Contrast	Adjustment scale	
Zoom	Zoom Panning left-right Panning up-down Save and return Cancel	Adjustment scale Adjustment scale Adjustment scale
Keystone	Adjustment scale	
Color	(Color temperature) Custom color Saturation Save and return Cancel	Adjustment scale Adjustment scale
Tint	Adjustment scale	
Sharpness	Adjustment scale	
Language	Deutsche English Espanol Francais Italiano Nederlands Brazilian Portuguese Save and Return	

Continued

Video On-Screen Menu *(continued)*

Video Menu	Video Menu Level 2	Video Menu Level 3
Audio	Mute Volume Bass Treble Cancel Save and return	On - Off Adjustment scale Adjustment scale Adjustment scale
Source	S-Video Composite DVI Analog Save and return	
Picture in Picture	On - off Location Source Save and return	(toggles 5 locations) Composite, S-Video
Menu Location	Up-down Left-right Save and return Cancel	Adjustment scale Adjustment scale
Management	Power saver Lamp hours Reset lamp hours Standby lamp delay Flip image Serial number Master reset Save and return Cancel	On-off Display hours - 5 digits Confirmation Delay adjustment Horizontal - vertical - both Display serial number Confirmation
Factory reset	Confirm reset	
Exit		
Current mode		

To make adjustments to the video on-screen menu, follow the steps in “Adjusting the On-Screen Menus” in Chapter 2.

Explaining Functions in the Video On-Screen Menu

In addition to the analog on-screen menu functions, the video on-screen menu includes the following additional functions:

- Tint-adjusts screen image tint.
- Sharpness-adjusts screen image sharpness.
- Audio-adjusts the audio controls for the Multimedia Adapter speaker.
- Source-selects between composite, S-video, DVI, and analog input.

Using the Remote Control

The remote control has many convenient features. It combines the functions of the projector buttons with some of the most widely used functions of the computer mouse.

Before using the remote control, be sure steps 1 through 4 have been completed under “Powering On the Projector.”

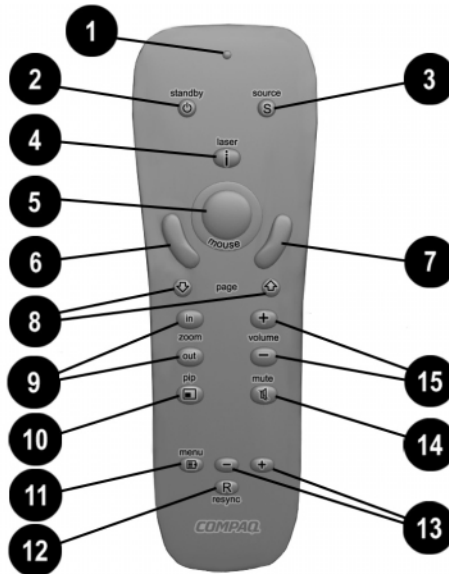


The remote control operates only when the Compaq Multimedia Adapter is connected to the projector.



WARNING: To reduce the risk of injury to the eyes, do not look directly into the remote control laser light and do not point the laser light into anyone’s eyes. The remote control is equipped with a Class II laser that emits radiation.

Identifying the Remote Control Buttons



Item	Component	Function
①	LED	Glows green when the remote control is operating
②	Standby button	Powers the projector into and out of Standby mode
③	SCE—Source button	Selects the input source
④	Laser pointer	Allows laser pointer functionality
⑤	Mouse ball	<ol style="list-style-type: none"> 1. Controls the on-screen cursor and alternate left-mouse functions. 2. Calibrates the mouse ball for pointing performance.

Continued

Remote Control components *(continued)*

Item	Component	Function
⑥	Left mouse button	Controls left mouse functions
⑦	Right mouse button	Controls right mouse functions
⑧	Page up/down buttons	Scrolls up/down projected image
⑨	Zoom in/out buttons	Zooms in to a specific area on the screen, and zooms out to include a larger screen area
⑩	Picture in Picture (PIP) button	Allows Picture in Picture functionality. The foreground window will always contain video from a digital source; the background window will always contain video from an analog source
⑪	On-screen menu button	Launches the video on-screen Menu
⑫	Resync button	Resynchronizes the projector with the input source
⑬	On-screen menu adjustments +/-	Adjusts the video On-screen Menu
⑭	Mute button	Mutes or silences the speaker on the Multimedia Adapter
⑮	Volume +/-	Increases/decreases speaker volume



Follow the instructions in the “Adjusting the On-Screen Menus” section in Chapter 2 to make adjustments to the video on-screen menu.

Calibrating the Mouse

The mouse ball should be calibrated the first time the remote control is used or when the batteries are changed to adjust or fine-tune the mouse pointing performance.

Perform the following steps to calibrate the remote control:

1. Ensure that the projector, Multimedia Adapter, and remote control are powered on.
2. Press down on the top of the mouse ball and hold it down until it clicks.
3. Move the mouse ball around in as large a circle as possible.

Remote Control Functions


The remote control performs the following functions:

- Duplicates the functions of the projector buttons including adjusting the on-screen buttons.
- Controls the computer connected to the projector by navigating through the computer directories and opening and closing files.

IMPORTANT: To operate a computer using the remote control, the 8-pin-to-USB/RS232 Y-cable (included with the Multimedia Adapter) must be used. Connect the 8-pin connector cable to the appropriate connector on the Multimedia Adapter and connect the USB connector to the USB connector on the computer (preferred) **or** the RS232 connector to the serial connector on the computer. Do not connect **both** the USB and RS232 connectors to the computer.

NOTE: The remote control **Page Up** and **Page Down** functions work only when the computer is connected to the Multimedia Adapter using the USB connector.



 Microsoft Windows 95 (OSR Version 2.1), Windows 98, and Windows 2000 support USB connection. Microsoft Windows NT does not currently support USB connection.

Picture-in-Picture On-Screen Adjustments

When the Multimedia Adapter is attached to the projector, an input source is connected, and the S-video and composite connectors are attached to input sources, a second alternate Picture-in-Picture (PIP) on-screen menu displays on the projector screen. The PIP on-screen menu includes functions that apply to the PIP function only.



Picture-in-Picture is functional only with VGA and S-video or composite video input.

Perform the following steps to display the PIP on-screen menu:

1. Attach the Multimedia Adapter to the projector.
2. Connect both the S-video and composite input connectors to input sources.
3. Press the remote control **PIP** button or the remote control or projector **Select** button. Once the menu has been accessed, press the **+** and **-** buttons to highlight PIP.



To make adjustments to the PIP on-screen menu, follow the steps in “Adjusting the On-Screen Menu” in Chapter 2.

PIP Menu	PIP Menu Level 2	PIP Menu Level 3
Brightness	Adjustment scale	
Contrast	Adjustment scale	
Zoom	Zoom Panning left-right Panning up-down Save and return Cancel	Adjustment scale Adjustment scale Adjustment scale
Keystone	Adjustment scale	
Picture	Dark-light	
Color	(Color temperature) Custom color Saturation Save and return Cancel	Adjustment scale Adjustment scale
Digital conversion	Clock Clock phase Save and return Cancel	Adjustment scale Adjustment scale
Language	Deutsche English Espanol Francais Italiano Nederlands Brazilian Portuguese Save and Return	
Audio	Mute Volume Bass Treble Cancel Save and return	On - Off Adjustment scale Adjustment scale Adjustment scale
Source	S-Video Composite DVI Analog Save and return	
Picture in Picture	On - off Location Source Save and return	(toggles 5 locations) Composite, S-Video

Continued

PIP On-Screen Menu *(continued)*

PIP Menu	PIP Menu Level 2	PIP Menu Level 3
Menu Location	Up-down Left-right Save and return Cancel	Adjustment scale Adjustment scale
Management	Power saver Lamp hours Reset lamp hours Standby lamp delay Flip image Serial number Master reset Save and return Cancel	On-off Display hours - 5 digits Confirmation Delay adjustment Horizontal Vertical Both Save and return Cancel Display serial number Confirmation
Factory reset	Confirm reset	
Exit		
Current mode		

Explaining Functions in the PIP On-Screen Menu

While the PIP on-screen menu contains many of the analog on-screen functions, it also includes the following functions:

- Audio-adjusts the audio controls for the Multimedia Adapter speaker.
- Source-selects between composite, S-video, DVI, and analog input.
- PIP-turns PIP on/off; changes the PIP location on the projected image; and selects the input source.

Care and Maintenance

This section explains how to care for and maintain your Compaq projector during normal everyday use.

Protecting the Projector

To protect your projector from overheating and other types of damage, follow these suggestions:

- Use only a power source and connection appropriate for this projector as indicated on the marking label.
- Do not overload an electrical outlet, power strip, or convenience receptacle. The overall system load must not exceed 80 percent of the branch circuit rating. If an extension cord or power strip is used, make sure that the cord or strip is rated for the product and that the total ampere ratings of all products plugged into the extension cord or power strip do not exceed 80 percent of the extension cord or strip ampere ratings limit.
- Install the projector near an outlet that you can easily reach. Disconnect the product by grasping the plug firmly and pulling it from the outlet. Never disconnect it by pulling the cord.
- Unplug the projector from the wall outlet before cleaning. Do not use liquid cleaners or aerosol cleaners.
- Slots and openings in the cabinet are provided for ventilation. These openings must not be blocked or covered. Never push objects of any kind into cabinet slots or other openings.
- Do not drop the projector or place it on an unstable surface.
- Do not expose this product to rain or moisture.
- Do not allow anything to rest on the power cord. Do not walk on the cord.

- Do not open the projector or attempt to service this product for any other reason than to replace the lamp module. Adjust only those controls that are covered by the operating instructions. If the projector is not operating properly or has been dropped or damaged, contact your Compaq authorized dealer, reseller, or service provider.

Cleaning the Lens

To minimize the risk of damaging or scratching the lens surface, this cleaning procedure has been developed. The first recommendation is to remove any dust particles from the lens by blowing them off with clean, dry, deionized air. However, this may not be a convenient method, and an alternate method is described below.

To clean the lens, use only a **clean** cloth and follow these steps:



CAUTION: Do not spray any type of fluid or cleaner directly on the lens surface. Do not use liquid cleaners.

1. Wipe the lens in a single direction with a **clean, dry** cloth. Do not wipe back and forth across the lens surface.
2. If the cloth is dirty or smears the lens, wash the cloth. If the cloth is still dirty after washing it or the fabric is damaged, replace it.



Do not use fabric softener when washing a cleaning cloth or softener sheets when drying the cloth.



CAUTION: Do not store a cleaning cloth in contact with the lens for a long time as doing so may contaminate the lens with dye from the cloth. The cloth can be contaminated if left in the open air or in a lab coat pocket.

Replacing the Projector Lamp Module

When the projector lamp reaches its end of life, it may pop when it burns out. The lamp will need to be replaced before the projector can be used again.



WARNING: When the lamp reaches its end of life, it may pop or rupture. To reduce the risk of personal injury, be careful when removing the lamp cover as broken glass may be present. Never open the lamp cover while the projector is operating or when the lamp is hot.

The projector will alert you when the lamp approaches its failure mode or end of life. When the message “Lamp May Fail Soon - Replacement Suggested” displays on the projection screen, you should change the lamp as soon as possible. Contact your local Compaq authorized dealer, seller, or reseller to purchase a spare lamp or have the lamp changed. You can also purchase a lamp directly through www.Compaq.com

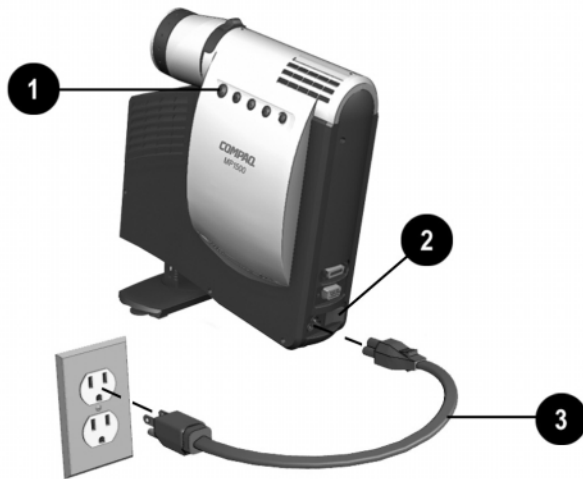
Follow these steps to replace the projector lamp module:

1. Turn off the power to the projector by pressing the **Standby** button ❶.
2. Allow the projector to cool down for at least 30 minutes.

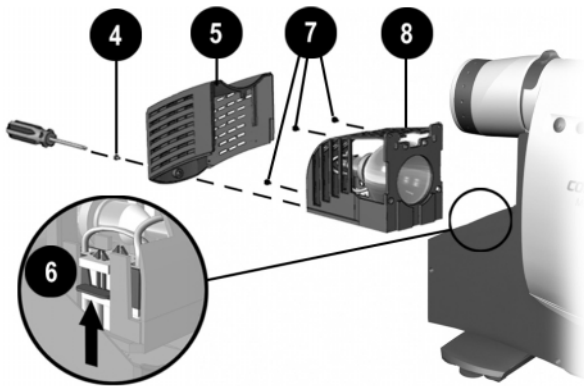


WARNING: The lamp assembly operates at a very high temperature. To reduce the risk of personal injury, allow the projector to cool down for at least 30 minutes before opening the lamp cover. Never open the lamp cover while the projector is operating or when the lamp is hot.

3. Turn off the main power switch ❷.
4. Disconnect the power cord ❸.



5. Use the provided Phillips screwdriver to remove the screw ④ from the lamp cover.
6. Remove the cover ⑤.
7. On the left side of the lamp module, push the electrical connector ⑥ up to disengage it from the projector base.
8. Remove the three screws ⑦ from the lamp module.
9. Pull out the lamp module ⑧.



WARNING: To reduce the risk of personal injury, do not drop the lamp module or touch the glass bulb. The glass may shatter and cause an injury if it is dropped.

Reverse the previous steps to replace the lamp module.



After replacing the lamp module, remember to reset the lamp hours in the on-screen menu.

IMPORTANT: The lamp contains < 0.125 percent mercury by weight. If the projection lamp breaks, the mercury may be released into the atmosphere. Please follow applicable federal, state, and local regulations for disposal and/or recycling.

Troubleshooting

Problem	Solution
Image does not appear on the projection screen	<ol style="list-style-type: none">1. Make sure the projector is powered on.2. Ensure the lens cap has been removed.3. Press the Standby button again.4. Ensure that the power cable is securely connected.5. Ensure the pins on the connectors are not crooked or broken.6. Turn off or disable the portable or desktop computer screen saver function.7. Ensure the projection lamp has been securely installed.8. Ensure your portable computer's external video port is turned on. Toggle the Fn + F4 function keys. Activate CRT/LCD "ON" at the same time. To identify any alternate function keys to be used, refer to your portable computer's user manual.
Scrolling, cut-off, or incorrect image displayed	<ol style="list-style-type: none">1. Press the Resync button.2. Turn everything off; then power on the projector first and power on the portable or desktop computer second.3. If the above steps do not correct the display image, adjust the resolution of the portable or desktop computer to 1024 × 768.

Continued

Troubleshooting *(continued)*

Problem	Solution
Portable computer or PC Companion screen is not displaying the presentation	<p data-bbox="480 152 703 178">Portable computer:</p> <p data-bbox="480 183 900 391">Most portable computers have a monitor loop-through or simultaneous viewing function. Press the Fn +F4 function keys on the portable computer to switch the image from the portable screen to the projection screen or to toggle through the following three options:</p> <ol data-bbox="480 399 900 591" style="list-style-type: none"><li data-bbox="480 399 900 451">1. LCD: Output displays only on the portable screen.<li data-bbox="480 456 900 508">2. CRT: Output displays only on the projection screen.<li data-bbox="480 513 900 591">3. CRT/LCD: Output displays on the portable screen and the projection screen. <p data-bbox="480 599 900 703">Activate CRT/LCD "ON" at the same time. To identify any alternate function keys to be used, refer to your portable computer's user manual.</p> <p data-bbox="480 711 689 737">Mac PowerBooks:</p> <ol data-bbox="480 745 900 963" style="list-style-type: none"><li data-bbox="480 745 900 849">1. To control video mirroring, click Control Panel→Display, then set Video Mirroring to ON for both internal and external viewing.<li data-bbox="480 854 900 963">2. Set Video Mirroring OFF for image on external monitor only or internal only, depending on monitor selection in Monitors.
Image is flickering or unstable	Press the Resync button on the projector panel to adjust the tracking. If that does not stop the flickering, adjust the Clock Phase function in the on-screen menu.

Continued

Troubleshooting *(continued)*

Problem	Solution
Image is out of focus	<ol style="list-style-type: none">1. Adjust the Focus Ring on the projection lens.2. Make sure the projection screen is within the required distance (4.92 to 16.4 feet, 1.5 to 5 meters) from the projector.3. Check the projection lens to see if it needs cleaning. Follow the "Cleaning the Lens" procedures on page 1-27 to clean the lens.
Projected colors do not match computer or camcorder color	<ol style="list-style-type: none">1. Adjust the Brightness, Contrast, or Color functions in the on-screen menu.2. Make sure the pins on the cable connectors are not bent or broken.
Black or gray border visible outside the usable area of the projection screen	<p>The black border surrounding the active area of the projection screen is part of the total projected image; however, it is an inactive area and cannot display any part of the image. This black border reduces the amount of extraneous light, producing a better image.</p>
Only the Compaq startup screen displays	<ol style="list-style-type: none">1. Check that the cables are connected securely.2. Verify that the proper input source is connected.3. Make sure your portable computer's external video port is activated.

Continued

Troubleshooting *(continued)*

Problem	Solution
A blue screen displays on the projection screen when a videocassette recorder is connected to the projector.	Check the videocassette recorder Play or TV/Video buttons. If that does not work, refer to your videocassette recorder manual.
Lamp shuts off	<ol style="list-style-type: none">1. If all five LEDs flash amber, the projector has overheated and will automatically shut down. Wait five to ten minutes until the LED buttons stop flashing and the Standby Button turns amber before restarting the projector again.2. A minor power surge may cause the lamp to shut off. Wait a few minutes, then turn it back on.
Lamp burns out or makes a popping sound	When the lamp reaches its end of life, it will burn out and may make a loud popping sound. If this happens, the projector will not turn back on until the lamp module has been replaced. Contact your local Compaq authorized dealer, seller, or reseller to purchase a replacement lamp module. To replace the lamp, follow the procedures in the "Replacing the Projector Lamp Module" section.
Multimedia Adapter speaker does not operate.	<ol style="list-style-type: none">1. Make sure the audio cable is correctly connected to the Multimedia Adapter and the audio source.2. Make sure the audio source is operating properly.3. Make sure the Mute button is off.

Continued

Troubleshooting *(continued)*

Problem	Solution
PIP does not operate.	Check the cable connections. If there is a digital video source connected, PIP will not operate. PIP is always the inset picture, data will always be the background picture.
Remote control does not operate	The three AAA batteries may need to be replaced.
Remote mouse does not operate computer.	<ol style="list-style-type: none">1. Make sure the Y-cable is connected to both the computer and the Multimedia Adapter. Do not connect both the USB and RS232 connectors to the computer at the same time. The USB connector is the preferred connector.2. If the RS232 connection is being used, the remote control does not function until the serial port is initialized. You may need to restart the computer to initialize the serial port.
Compatibility issues with equipment attached to the projector.	Refer to Appendix C "Flash ROM Upgrade" for more information. If this does not resolve the problem, contact your Compaq authorized service provider or call Compaq Customer Support for help. Refer to the "Contacting Customer Support" manual included in the projector documentation kit for a complete list of customer support numbers to call.
Image size is too small/large.	Adjust the manual zoom until the image is the desired size.

Agency Regulatory Notices

Federal Communications Commission Notice

This equipment has been tested and found to comply with the limits for a Class B digital device, pursuant to Part 15 of the FCC Rules. These limits are designed to provide reasonable protection against harmful interference in a residential installation. This equipment generates, uses, and can radiate radio frequency energy and, if not installed and used in accordance with the instructions, may cause harmful interference to radio communications. However, there is no guarantee that interference will not occur in a particular installation. If this equipment does cause harmful interference to radio or television reception, which can be determined by turning the equipment off and on, the user is encouraged to try to correct the interference by one or more of the following measures:

- Reorient or relocate the receiving antenna.
- Increase the separation between the equipment and the receiver.
- Connect the equipment into an outlet on a circuit different from the circuit that the receiver is connected.
- Consult the dealer or an experienced radio or television technician for help.

Modifications

The FCC requires the user to be notified that if any changes or modifications are made to this device, not expressly approved by Compaq Computer Corporation, this may void the user's authority to operate the equipment.

Cables

Connections to this device must be made with shielded cables with metallic RFI/EMI connector hoods to maintain compliance with FCC Rules and Regulations.

Declaration of Conformity for Products Marked with the FCC Logo—United States Only

This device complies with Part 15 of the FCC Rules. Operation is subject to the following two conditions: (1) this device may not cause harmful interference, and (2) this device must accept any interference received, including interference that may cause undesired operation.

For questions regarding your product, contact:

Compaq Computer Corporation
P.O. Box 692000, Mail Stop 530113
Houston, Texas 77269-2000

Or, call 1-800-652-6672 (1-800-OK COMPAQ)

For questions regarding this FCC declaration, contact:

Compaq Computer Corporation
P.O. Box 692000, Mail Stop 510101
Houston, Texas 77269-2000

Or, call (281) 514-3333

To identify this product, refer to the Part, Series, or Model number found on the product.

Canadian Notice

This Class B digital apparatus meets all requirements of the Canadian Interference-Causing Equipment Regulations.

Avis Canadien

Cet appareil numérique de la classe B respecte toutes les exigences du Règlement sur le matériel brouilleur du Canada.

European Notice

Products with the CE Marking comply with both the EMC Directive (89/336/EEC) and the Low Voltage Directive (73/23/EEC) issued by the Commission of the European Community.

Compliance with these directives implies conformity to the following European norms:

- EN55022 (CISPR 22) - Radio Frequency Interference
- EN50082-1 (IEC801-2, IEC801-3, IEC801-4) - Electromagnetic Immunity
- EN60950 (IEC950) - Product Safety

Japanese Notice

この装置は、情報処理装置等電波障害自主規制協議会（VCCI）の基準に基づくクラスB情報技術装置です。この装置は、家庭環境で使用することを目的としていますが、この装置がラジオやテレビジョン受信機に近接して使用されると、受信障害を引き起こすことがあります。

取扱説明書に従って正しい取り扱いをして下さい。

Specifications

Compaq MP1800 Microportable Projector

Projection panel	XGA 1024 × 768 × 1	
Lamp type	120 watt High Brightness Lamp	
Image size	See the Image Size Adjustment table.	
Avg. lamp life in hours	1,500 hours	
Projection distance	4.92 to 16.4 feet (1.5 to 5 meters)	
Maximum weight (unpacked)	4.6 lbs (without cables)	
Maximum dimensions	3 in (w) × 8 in (h) × 9.38 in (d)	
Maximum graphics resolution	1280 × 1024 compression	
Displayable colors	16.7 million colors	
Horizontal frequencies	15 69 kHz Analog 15 60 kHz Digital	
Vertical frequencies	48 - 85 Hz Analog 48 - 75 Hz Digital	
Required Environmental Temperatures for the Following Altitudes:		
Sea Level		
Operating Temperature	50 to 104°F	10 to 40°C
Storage Temperature	-22 to 149°F	-40 to 65°C
2,500 - 5,000 Feet		
Operating Temperature	50 to 95°F	10 to 35°C
Storage Temperature	-22 to 149°F	-40 to 65°C
5,000 - 10,000 Feet		
Operating Temperature	50 to 82°F	10 to 28°C
Storage Temperature	-22 to 149°F	-40 to 65°C
Humidity (Non-Condensing)		
Operating	20 to 80%	
Non-Operating	5 to 95%	
Power Source	90 - 265 VAC, 50-60 Hz	
Power Consumption	< 185 watts	
Input Terminal	One 15-pin D-type VGA connector with one cable included One DFP connector with one cable included One RS232 to DFP upgrade cable included	

Preset Display Resolutions Table

This projector automatically recognizes the preset display resolutions listed in the following table.

Display Resolutions	
Preset Modes	Resolutions
1. Industry Standard	640 × 350 at 31.5 kHz/70 Hz
2. VESA Standard	640 × 350 at 37.8 kHz/85 Hz
3. Industry Standard	640 × 480 at 37.8 kHz/72 Hz
4. VESA Standard	640 × 480 at 37.5 kHz/75 Hz
5. VESA Standard	640 × 480 at 43.3 kHz/85 Hz
6. Industry Standard	720 × 400 at 31.5 kHz/70 Hz
7. VESA Standard	720 × 400 at 37.9 kHz/85 Hz
8. VESA Standard	800 × 600 at 35.1 kHz/56 Hz
9. VESA Standard	800 × 600 at 37.8 kHz/60 Hz
10. VESA Standard	800 × 600 at 48 kHz/72 Hz
11. VESA Standard	800 × 600 at 46.9 kHz/75 Hz
12. VESA Standard	800 × 600 at 53.7 kHz/85 Hz
13. Macintosh-compatible	832 × 624 at 49.7 kHz/75 Hz
14. Macintosh-compatible	1152 × 870 at 68.7 kHz/75 Hz
15. VESA Standard	1024 × 768 at 35.5 kHz/43.4 Hz
16. VESA Standard	1024 × 768 at 48.4 kHz/60 Hz
17. VESA Standard	1024 × 768 at 56.4 kHz/70 Hz
18. VESA Standard	1024 × 768 at 60 kHz/75 Hz
19. VESA Standard	1024 × 768 at 68.7 kHz/85 Hz
20. VESA Standard	1280 × 1024 at 64 kHz/60 Hz
21. VESA Standard	1280 × 1024 at 80 kHz/75 Hz
22. VGA Compatibility	640 × 480 at 31.5 kHz/60 Hz

Power Cords

The projector power supply is provided with Automatic Line Switching (ALS). This feature allows the projector to operate on input voltages between 100-120V or 200-240V.

The power cord set (flexible cord or wall plug) received with the projector meets the requirements for use in the country where you purchased the equipment.

If you need to obtain a power cord for a different country, you should purchase a power cord that is approved for use in that country.

The power cord must be rated for the product and for the voltage and current marked on the product's electrical ratings label. The voltage and current rating of the cord should be greater than the voltage and current rating marked on the product. In addition, the diameter of the wire must be a minimum of 0.75 mm² or 18AWG, and the length of the cord must be between 6 feet (1.8 m) and 12 feet (3.6 m). If you have questions about the type of power cord to use, contact your Compaq authorized service provider.

A power cord should be routed so that it is not likely to be walked on or pinched by items placed upon it or against it. Particular attention should be paid to the plug, electrical outlet, and the point where the cord exits from the product.

Flash ROM Upgrade

The Compaq MP1800 Microportable Projector can be upgraded by flashing the ROM (Read Only Memory) resident on the projector. This will be available from Compaq in the future only if necessary.

NOTE: Before attempting these steps, make sure the projector is turned off.

The Flash ROM upgrade provides the following functions:

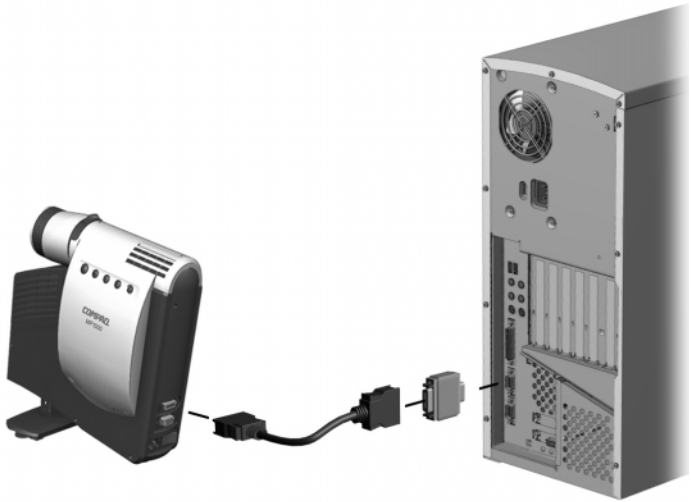
- Implements new features on the projector
- Provides upgrades to existing features
- Resolves compatibility issues.

Locate the following items in the Compaq MP1800 Microportable Projector shipping box:

- DFP to DVI signal cable
- RS232 to DVI upgrade

Complete the following steps to upgrade the projector's ROM:

1. Connect the DFP end of the cable to the DFP connector on the projector and the DVI end of the cable to the input end of the Flash ROM RS232 adapter.
2. Connect the other end of the Flash ROM RS232 adapter to the RS232 (serial) connector on the computer.



3. Power on the computer and monitor only (if applicable).
4. Access Compaq's web site at:
<http://www.Compaq.com/Services/Projectors/MP1800/Softpaqs>.
5. Follow the steps outlined on the Web site.
6. Power on the projector.
7. Wait about two minutes to allow the Flash Upgrade program to complete the upgrade, then the projector will automatically reset and be ready to use.

Free Manuals Download Website

<http://myh66.com>

<http://usermanuals.us>

<http://www.somanuals.com>

<http://www.4manuals.cc>

<http://www.manual-lib.com>

<http://www.404manual.com>

<http://www.luxmanual.com>

<http://aubethermostatmanual.com>

Golf course search by state

<http://golfingnear.com>

Email search by domain

<http://emailbydomain.com>

Auto manuals search

<http://auto.somanuals.com>

TV manuals search

<http://tv.somanuals.com>