

disabilities. 3. This appliance should not be used by, on or near children or individuals with certain disabilities.

2. Do not pull, twist, or wrap line cord around appliance.

1. **This appliance should never be left unattended when plugged in.**

electrocution, fire, or injury to persons;

WARNING - To reduce the risk of burns, immediately, **Do not reach into the water.**

5. If an appliance falls into water, unplug it

liquid. 4. Do not place in, or drop into, water or other

fall or be pulled into a tub or sink. 3. Do not place or store appliance where it can

2. Do not use while bathing or in the shower.

1. **Always unplug appliance immediately after using.**

risk of death by electric shock:

live even when the switch is off. To reduce the risk of death by electric shock:

KEEP AWAY FROM WATER

BEFORE USING

READ ALL INSTRUCTIONS

following:

tions should always be followed, including the when children are present, basic safety precau-

When using electrical appliances, especially damaged cord or plug, if it is not working

5. **Never operate this appliance if it has a damaged, or dropped into water. Return the appliance to an authorized service center for examination and repair.**

6. Keep the cord away from heated surfaces. 7. Never use while sleeping.

8. Never drop or insert any object into any opening or hose.

9. Do not use outdoors or operate where aero-

live even when the switch is off. To reduce the risk of death by electric shock:

5. **Never operate this appliance if it has a damaged cord or plug, if it is not working properly or if it has been dropped or**

center for examination and repair.

6. Keep the cord away from heated surfaces. 7. Never use while sleeping.

8. Never drop or insert any object into any opening or hose.

9. Do not use outdoors or operate where aeros-

live even when the switch is off. To reduce the risk of death by electric shock:

5. **Never operate this appliance if it has a damaged cord or plug, if it is not working**

6. Keep the cord away from heated surfaces. 7. Never use while sleeping.

8. Never drop or insert any object into any opening or hose. 9. Do not use outdoors or operate where aeros-

live even when the switch is off. To reduce the risk of death by electric shock:

INSTRUCTIONS

SAVE THESE

15. Do not attempt to touch the housing of your appliance near the barrel, as it is hot when in use.

14. Do not touch hot surfaces of the appliance.

13. Do not use an extension cord with this ap-

plance.

12. Never block the air openings of the appliance or place on a soft surface such as a bed or

couch, where the air openings may be blocked.

11. **Do not place the heated unit directly on any surface while it is hot or plugged in.**

10. Unit is hot when in use. Do not let heated

surface touch eyes or skin.

9. Do not use outdoors or operate where aeros-

live even when the switch is off. To reduce the risk of death by electric shock:

5. **Never operate this appliance if it has a damaged cord or plug, if it is not working**

center for examination and repair.

6. Keep the cord away from heated surfaces.

7. Never use while sleeping.

8. Never drop or insert any object into any open-

ing or hose.

9. Do not use outdoors or operate where aeros-

live even when the switch is off. To reduce the risk of death by electric shock:

OPERATING INSTRUCTIONS

Use on Alternating Current (60 hertz) only. This

This curling wand is intended for household use.

Use on Alternating Current (60 hertz) only. This

unit is designed to be operated at 120V AC.

This appliance has a polarized plug (one blade

is wider than the other). As a safety feature, this

plug will fit in a polarized outlet only one way.

If the plug does not fit fully in the outlet, reverse

the plug. If it still does not fit, contact a qualified

electrician. Do not attempt to defeat this safety

feature.

settings and instant Heat technology provide

The wand's unique 5 ultra-high heat temperature

to heat up for 30 seconds.

285°F setting will become illuminated. Allow unit

electrical outlet. Turn on unit. The Power/Low

Hair should be clean and completely dried before

using the curling wand. Plug the wand into an

285°F setting will become illuminated. Allow unit

to heat up for 30 seconds.

This curling wand is intended for household use.

unit is designed to be operated at 120V AC.

This appliance has a polarized plug (one blade

is wider than the other). As a safety feature, this

plug will fit in a polarized outlet only one way.

If the plug does not fit fully in the outlet, reverse

the plug. If it still does not fit, contact a qualified

electrician. Do not attempt to defeat this safety

feature.

settings and instant Heat technology provide

The wand's unique 5 ultra-high heat temperature

to heat up for 30 seconds.

285°F setting will become illuminated. Allow unit

electrical outlet. Turn on unit. The Power/Low

Hair should be clean and completely dried before

using the curling wand. Plug the wand into an

285°F setting will become illuminated. Allow unit

LED TEMP. CONTROL	HAIR TYPE	
Power/Low 285°F	Delicate, thin, easy-to-curl hair	
Medium 310°F	Average-to-thick or treated hair	
Med-High 330°F	Thick or wavy hair	
High/Max 360°F - 400°F	Hard-to-curl hair	

Temperature Setting Guide

particular need!

the wand's temperature according to your

hair, keep the heat setting on high. You can vary

results. If you have thick, wavy or hard-to-curl

fine hair, a low temperature will provide the best

styling versatility for all hair types. If you have

The wand's unique 5 ultra-high heat temperature

to heat up for 30 seconds.

285°F setting will become illuminated. Allow unit

electrical outlet. Turn on unit. The Power/Low

Hair should be clean and completely dried before

using the curling wand. Plug the wand into an

285°F setting will become illuminated. Allow unit

to heat up for 30 seconds.

This curling wand is intended for household use.

unit is designed to be operated at 120V AC.

This appliance has a polarized plug (one blade

is wider than the other). As a safety feature, this

plug will fit in a polarized outlet only one way.

If the plug does not fit fully in the outlet, reverse

the plug. If it still does not fit, contact a qualified

electrician. Do not attempt to defeat this safety

feature.

settings and instant Heat technology provide

The wand's unique 5 ultra-high heat temperature

to heat up for 30 seconds.

285°F setting will become illuminated. Allow unit

electrical outlet. Turn on unit. The Power/Low

Hair should be clean and completely dried before

using the curling wand. Plug the wand into an

285°F setting will become illuminated. Allow unit

to heat up for 30 seconds.

This curling wand is intended for household use.

unit is designed to be operated at 120V AC.

This appliance has a polarized plug (one blade

is wider than the other). As a safety feature, this

plug will fit in a polarized outlet only one way.

If the plug does not fit fully in the outlet, reverse

the plug. If it still does not fit, contact a qualified

electrician. Do not attempt to defeat this safety

feature.

settings and instant Heat technology provide

The wand's unique 5 ultra-high heat temperature

to heat up for 30 seconds.

285°F setting will become illuminated. Allow unit

electrical outlet. Turn on unit. The Power/Low

Hair should be clean and completely dried before

using the curling wand. Plug the wand into an

285°F setting will become illuminated. Allow unit

to heat up for 30 seconds.

This curling wand is intended for household use.

unit is designed to be operated at 120V AC.

This appliance has a polarized plug (one blade

is wider than the other). As a safety feature, this

plug will fit in a polarized outlet only one way.

If the plug does not fit fully in the outlet, reverse

the plug. If it still does not fit, contact a qualified

electrician. Do not attempt to defeat this safety

feature.

settings and instant Heat technology provide

The wand's unique 5 ultra-high heat temperature

to heat up for 30 seconds.

285°F setting will become illuminated. Allow unit

electrical outlet. Turn on unit. The Power/Low

Hair should be clean and completely dried before

using the curling wand. Plug the wand into an

285°F setting will become illuminated. Allow unit

to heat up for 30 seconds.

This curling wand is intended for household use.

unit is designed to be operated at 120V AC.

This appliance has a polarized plug (one blade

285°F setting will become illuminated. Allow unit

to heat up for 30 seconds.

This curling wand is intended for household use.

unit is designed to be operated at 120V AC.

This appliance has a polarized plug (one blade

is wider than the other). As a safety feature, this

plug will fit in a polarized outlet only one way.

If the plug does not fit fully in the outlet, reverse

the plug. If it still does not fit, contact a qualified

electrician. Do not attempt to defeat this safety

feature.

settings and instant Heat technology provide

The wand's unique 5 ultra-high heat temperature

to heat up for 30 seconds.

285°F setting will become illuminated. Allow unit

electrical outlet. Turn on unit. The Power/Low

Hair should be clean and completely dried before

using the curling wand. Plug the wand into an

285°F setting will become illuminated. Allow unit

to heat up for 30 seconds.

This curling wand is intended for household use.

unit is designed to be operated at 120V AC.

This appliance has a polarized plug (one blade

is wider than the other). As a safety feature, this

plug will fit in a polarized outlet only one way.

If the plug does not fit fully in the outlet, reverse

the plug. If it still does not fit, contact a qualified

electrician. Do not attempt to defeat this safety

feature.

settings and instant Heat technology provide

The wand's unique 5 ultra-high heat temperature

to heat up for 30 seconds.

285°F setting will become illuminated. Allow unit

electrical outlet. Turn on unit. The Power/Low

Hair should be clean and completely dried before

using the curling wand. Plug the wand into an

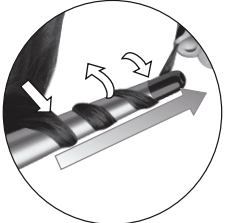
285°F setting will become illuminated. Allow unit

to heat up for 30 seconds.

This curling wand is intended for household use.

unit is designed to be operated at 120V AC.

This appliance has a polarized plug (one blade



portion of the barrel towards the cool tip.

2. Wind the section of hair around the thicker

from the scalp.

1. Take a 1" wide section of hair, starting 2"

For best results, use a light styling product

before blow-drying hair.



MEDIDAS DE SEGURIDAD IMPORTANTES

Siempre que use aparatos eléctricos, especialmente en la presencia de niños, debe tomar precauciones básicas de seguridad, entre las cuales las siguientes:

LEA TODAS LAS INSTRUCCIONES ANTES DE USARLO

MANTÉNGALO ALEJADO DEL AGUA

PELIGRO

permanece bajo tensión, aunque esté apagado.

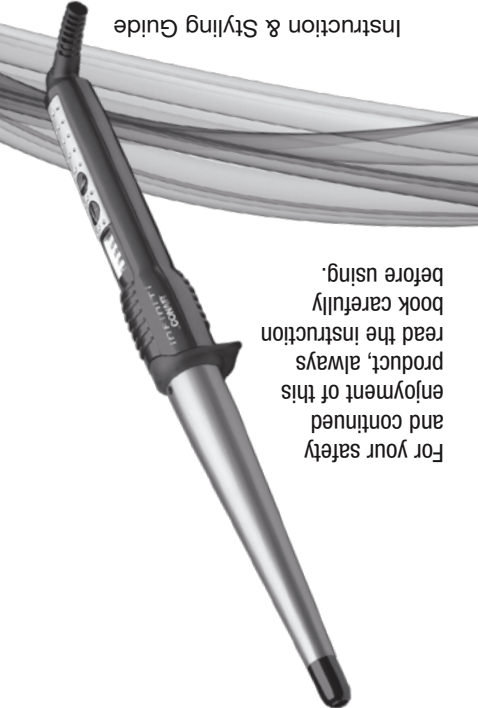
Para reducir el riesgo de muerte o herida por descarga:

- Siempre desconecte el aparato inmediatamente después de usarlo.**
- No lo use en el baño o la ducha.
- No coloque ni guarde el aparato donde pueda caer o ser empujado a una bañera o un lavabo.
- No coloque el aparato ni lo deje caer al agua u otro líquido.
- Si el aparato cayera al agua, desconéctelo inmediatamente. **No toque el agua.**

ADVERTENCIA

Para reducir el riesgo de quemaduras, electrocución, incendio o heridas:

1. **Nunca deje el aparato desatendido mientras esté conectado.**



you curl
your tourmaline
ceramic styler

For your safety and continued enjoyment of this product, always read the instruction book carefully before using.

FAMILIARÍCESE CON SU RIZADOR



"guante" protector termo-resistente

INSTRUCCIONES DE MANTENIMIENTO

Su aparato casi no necesita mantenimiento. No necesita lubricación. Mantenga todas las aberturas libres de polvos y pelusas. Cuando sea necesario limpiarlo, desenchúfelo, permita que enfíe y limpie la superficie exterior con un paño humedecido. En caso de mal funcionamiento, desconecte el aparato, permita que enfíe y regréselo a un centro de servicio autorizado. No trate de repararlo.

PRECAUCIÓN

NUNCA jale, retuerza ni doble mucho el cable. Nunca lo enrolle con fuerza alrededor del aparato. Esto podría dañar la junta flexible que lo conecta al aparato, produciendo su ruptura o un cortocircuito. Inspeccione el cable con frecuencia para asegurarse que no esté dañado. Deje de usar el aparato inmediatamente si el cable parece dañado o si el aparato dejara de funcionar o funcionara de manera intermitente.

ALMACENAJE

Cuando no lo utiliza, su aparato es fácil de almacenar. Permita que enfíe y guárdelo en un lugar seco y seguro, fuera del alcance de los niños. No tiree ni retuerza el cable al nivel del enchufe. No enrolle el cable alrededor del aparato. Permita que el cable cuelgue o que la junta que lo conecta al secador esté suelta y recta.

SERVICE CENTER

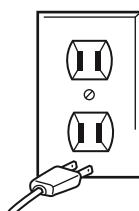
CONAIR CORPORATION
Service Department
7475 N. Glen Harbor Blvd
Glendale, AZ 85307

©2010 Conair Corporation

For info on any Conair or Ininiti by Conair product, call: 1-800-3-CONAIR or visit us on the web at: www.conair.com/ininiti

**ADVERTENCIA:
SI CREE QUE NO HAY
CORRIENTE CUANDO
EL APARATO ESTÁ
APAGADO, ESTÁ
EQUIVOCADO.**

MANTÉNGALO ALEJADO DEL AGUA



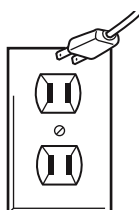
Todos sabemos que no se debe mezclar la electricidad y el agua. Pero ¿Sabe usted que un aparato eléctrico permanece bajo tensión aunque esté apagado? Si está conectado, hay corriente. Por lo tanto, siempre desenchufe los aparatos eléctricos después de usarlos.

**SIEMPRE DESENCHUFE
LOS APARATOS PEQUEÑOS**

LIMITED FIVE YEAR WARRANTY
Conair will repair or replace (at our option) your unit free of charge for 60 months from the date of purchase if the appliance is defective in workmanship or materials.
To obtain service under this warranty, return the defective product to the service center listed below, together with your purchase receipt and \$5.00 for postage and handling. California residents need only provide proof of purchase and should call 1-800-3-CONAIR for shipping instructions. In the absence of a purchase receipt, the warranty period shall be 60 months from the date of manufacture.
TO THE 60 MONTH DURATION OF THIS WRIT- TEN, LIMITED WARRANTY, SOME STATES DO NOT ALLOW LIMITATIONS ON HOW LONG AN IMPLIED WARRANTY LASTS, SO THE ABOVE LIMITATIONS MAY NOT APPLY TO YOU.
ANY IMPLIED WARRANTIES, OBLIGATIONS, OR LIABILITIES, INCLUDING BUT NOT LIMITED TO THE IMPLIED WARRANTY OF MERCHANTABILITY AND FITNESS FOR A PARTICULAR PURPOSE, SHALL BE LIMITED IN DURATION TO THE 60 MONTH DURATION OF THIS WRIT- TEN, LIMITED WARRANTY. Some states do not allow limitations on how long an implied warranty lasts, so the above limitations may not apply to you.
IN NO EVENT SHALL CONAIR BE LIABLE FOR ANY SPECIAL, INCIDENTAL, OR CONSEQUENTIAL DAMAGES FOR BREACH OF THIS OR ANY OTHER WARRANTY, EXPRESS OR IMPLIED, KNOW THAT AN ELECTRIC APPLIANCE IS STILL ELECTRICALLY LIVE EVEN IF THE SWITCH IS OFF? IF THE PLUG IS IN, THE POWER IS ON. SO WHEN YOU ARE NOT USING YOUR APPLIANCE, KEEP THEM UNPLUGGED.

**WARNING:
IF YOU THINK
THE POWER IS OFF,
IS OFF,
YOU'RE WRONG.**

KEEP AWAY FROM WATER



ALWAYS UNPLUG SMALL APPLIANCES

Everyone knows that electricity and water are a dangerous combination. But did you know that an electric appliance is still electrically live even if the switch is off? If the plug is in, the power is on. So when you are not using your appliances, keep them unplugged.

NEVER allow the power supply cord to be pulled, twisted, or severely bent. Never wrap the cord tightly around the appliance. Damage will occur at the high flex point of entry into the appliance, causing it to rupture and short circuit. Inspect the cord frequently for damage. Stop use immediately if damage is visible or if unit stops or operates intermittently.

CAUTION
NEVER allow the power supply cord to be pulled, twisted, or severely bent. Never wrap the cord tightly around the appliance. Damage will occur at the high flex point of entry into the appliance, causing it to rupture and short circuit. Inspect the cord frequently for damage. Stop use immediately if damage is visible or if unit stops or operates intermittently.

When not in use, your appliance is easy to store. Allow appliance to cool, then simply store out of reach of children in a safe, dry location. Do not jerk or strain cord at plug connections. Do not wrap the line cord around the appliance. Allow the cord to hang or lie loose and straight at the point of entry into the appliance.

GARANTÍA LIMITADA DE CINCO AÑOS

Conair reparará o reemplazará (a su opción) su aparato sin cargo por un período de 60 meses a partir de la fecha de compra si presentara defectos de materiales o fabricación.

Para obtener servicio técnico bajo esta garantía, regrese su aparato al Centro de Servicio indicado a continuación, junto con su recibo de compra y un cheque o giro postal de US\$5.00 por gastos de manejo y envío. Los residentes de California sólo necesitan dar una prueba de compra y deben llamar al 1-800-3-CONAIR para recibir instrucciones de envío. En ausencia del recibo de compra, el período de garantía será de 60 meses a partir de la fecha de fabricación.

CUALQUIER GARANTÍA, OBLIGACIÓN O RESPONSABILIDAD IMPLÍCITAS, INCLUYENDO PERO NO LIMITADAS A LA GARANTÍA IMPLÍCITA DE COMERCIABILIDAD Y APTITUD PARA UN PROPÓSITO ESPECÍFICO, ESTARÁN LIMITADAS POR LOS 60 MESES DE LA PRESENTE GARANTÍA ESCRITA. Algunos Estados no permiten limitaciones sobre la duración de una garantía implícita, de modo que las limitaciones mencionadas pueden no regir para usted.

CONAIR NO SERÁ RESPONSABLE EN NINGÚN CASO POR ALGÚN DAÑO ESPECIAL, INCIDENTAL O CONSECUENTE DEBIDO AL INCUMPLIMIENTO DE ESTA O CUALQUIER OTRA GARANTÍA, EXPRESA O IMPLÍCITA. Algunos Estados no permiten la exclusión o limitación de daños especiales, incidentales o consecuentes, de modo que las limitaciones mencionadas pueden no regir para usted.

Esta garantía le otorga derechos legales específicos y usted puede tener otros derechos que varían de un Estado a otro.

CENTRO DE SERVICIO

Conair Corporation
Service Department
7475 N. Glen Harbor Blvd
Glendale, AZ85307
©2010 Conair Corporation

Para más información sobre los productos Conair o Ininiti by Conair™, llame al 1-800-3-CONAIR o visítenos en www.conair.com/ininiti

you curl
rizador tourmaline
ceramic™



Para su seguridad y para disfrutar plenamente de este producto, siempre lea las instrucciones cuidadosamente antes de usarlo.

Instrucciones
Modelo CD117R



GETTING TO KNOW YOUR CURLING WAND

5 Ultra-high Heat Levels with LED Temperature Displays
Cool Tip
Tourmaline Ceramic-coated Barrel
Uniform Heat Recovery System
30-second Instant Heat
Auto Off
Stainless Steel Finish
Professional Swivel Line Cord
Universal Heat Protective Glove

When not in use, your appliance is easy to store. Allow appliance to cool, then simply store out of reach of children in a safe, dry location. Do not jerk or strain cord at plug connections. Do not wrap the line cord around the appliance. Allow the cord to hang or lie loose and straight at the point of entry into the appliance.

STORAGE
When not in use, your appliance is easy to store. Allow appliance to cool, then simply store out of reach of children in a safe, dry location. Do not jerk or strain cord at plug connections. Do not wrap the line cord around the appliance. Allow the cord to hang or lie loose and straight at the point of entry into the appliance.

CAUTION
NEVER allow the power supply cord to be pulled, twisted, or severely bent. Never wrap the cord tightly around the appliance. Damage will occur at the high flex point of entry into the appliance, causing it to rupture and short circuit. Inspect the cord frequently for damage. Stop use immediately if damage is visible or if unit stops or operates intermittently.

USER MAINTENANCE

Your curling wand is virtually maintenance-free. No lubrication is needed. Keep all vents and openings clear of dirt and dust. If cleaning becomes necessary, disconnect the unit from the power source, allow to cool and wipe exterior with a cloth. If any abnormal condition occurs, unplug the unit, allow it to cool, and return it for repair to an authorized service representative only. No repairs should be attempted by the consumer.

Free Manuals Download Website

<http://myh66.com>

<http://usermanuals.us>

<http://www.somanuals.com>

<http://www.4manuals.cc>

<http://www.manual-lib.com>

<http://www.404manual.com>

<http://www.luxmanual.com>

<http://aubethermostatmanual.com>

Golf course search by state

<http://golfingnear.com>

Email search by domain

<http://emailbydomain.com>

Auto manuals search

<http://auto.somanuals.com>

TV manuals search

<http://tv.somanuals.com>