

# IMPORTANT SAFETY INSTRUCTIONS

When using electrical appliances, especially when children are present, basic safety precautions should always be followed, including the following:

## READ ALL INSTRUCTIONS BEFORE USING.

### KEEP AWAY FROM WATER

**DANGER** - Any appliance is electrically live even when the switch is off. To reduce the risk of death by electric shock:

1. Always unplug appliance immediately after using.
2. Do not use while bathing.
3. Do not place or store appliance where it can fall or be pulled into a tub or sink.
4. Do not place in, or drop into, water or other liquid.
5. If an appliance falls into water, unplug it immediately. Do not reach into the water.

**WARNING** - To reduce the risk of burns, electrocution, fire, or injury to persons:

1. This appliance should never be left unattended when plugged in.
2. Do not pull, twist, or wrap line cord around appliance.
3. This appliance should not be used by, on or near children or individuals with certain disabilities.

4. Use this appliance only for its intended use, as described in this manual. Do not use attachments not recommended by the manufacturer.
5. Never operate this appliance if it has a damaged cord or plug, if it is not working properly or if it has been dropped or damaged, or dropped into water. Return the appliance to an authorized service center for examination and repair.
6. Keep the cord away from heated surfaces.
7. Never use while sleeping.
8. Never drop or insert any object into any opening.
9. Do not use outdoors or operate where aerosol (spray) products are being used or where oxygen is being administered.
10. Unit is hot when in use. Do not let heated surfaces touch eyes or bare skin.
11. Do not place the heated unit directly on any surface while it is hot or plugged in.
12. Never block the air openings of the appliance or place on a soft surface such as a bed or couch, where the air openings may be blocked. Keep the air opening free of lint and other debris.
13. Do not use an extension cord with this appliance.
14. Do not touch hot surfaces of the appliance. Use handles or knobs.
15. Before plugging in, read the information about dual voltage contained in the instruction section of this booklet.
16. Do not attempt to touch the housing of your appliance near the straightening plates, as it is hot when in use.

# SAVE THESE INSTRUCTIONS OPERATING INSTRUCTIONS

This straightening iron is intended for household use. Use on Alternating Current (50/60 hertz) only. This unit is designed to be operated at 120/240 volts A/C. The appliance has a polarized plug (one blade is wider than the other). As a safety feature, this plug will fit in a polarized outlet only one way. If the plug does not fit fully in the outlet, reverse the plug. If it still does not fit, contact a qualified electrician. Do not attempt to defeat this safety feature.

## DUAL VOLTAGE

This straightening iron will automatically adjust to the proper voltage. Use an adapter plug with correct configuration, prior to use in outlet.

## TO STRAIGHTEN HAIR

Plug the straightening iron cord into any household outlet (120/240V). The red LED will come on indicating the unit is plugged in. Press the On button (the red and green LEDs will blink indicating that the straightener is heating up). The red light will shut off once the iron has reached the optimal heat level. The iron will heat up very quickly. Hair should be clean and completely dried before using the straightening iron. For best results, use a light styling product before blow-drying hair. To turn off, press Off button (red light will go off). Never leave your straightening iron on and unattended. However, should you fail to turn the unit off, it will shut itself off automatically within 60 minutes.

**WARNING: The straightening iron's ceramic-coated plates will get very hot within a few seconds and should not be placed in contact with the skin after the straightening iron has been turned on.**

## GETTING STARTED

The iron's 20 temperature settings and Instant Heat technology provide styling versatility for all hair types. If you have fine hair, a low temperature will provide the best results. If you have thick, wavy or hard-to-straighten hair, keep the heat setting on high. You can vary the iron's temperature

## Temperature Setting Guide

TEMP. CONTROL	HAIR TYPE
Low 1-5	Delicate, thin, easy-to-straighten
Medium 6-10	Average to thick or treated hair
Med-High 11-15	Thick or wavy hair
High 16-20	Hard-to-straighten hair

### according to your particular need!

Start with a hair section that is 2" wide and no more than 1/2" thick. Open the iron and place a hair section between the two hot plates, close to the scalp. Trap hair between the plates by firmly squeezing the handles together. While maintaining the tension, slowly pull the unit down along the hair section toward the end of hair. At the end of hair section, release the pressure on the handle and allow the hair section to slide out. Repeat process on additional sections of hair until you achieve the hair style you desire. It may be necessary to repeat process on certain areas, depending on the texture of your hair.

Some experience is necessary when learning to use this straightening iron. After using iron several times, you will learn the ideal way to

straighten and style your hair easily.

## STYLING WITH THE NEW EASY-GLIDE CERAMIC-COATED PLATES

The plates of your new straightening iron have a Satin Finish® Easy-Glide ceramic-coated surface, the newest technology. The ceramic-coated surface also helps smooth down flyaways and frizzies. It evenly distributes heat so that the style you create has a salon-perfect, silky smooth, shining finish. Hair also slips right through the plates after it's straightened. This means it's not only simpler to clean off styling product residue, etc., after each use, but you'll find that hair glides easily over the surface of the plates as you're straightening.

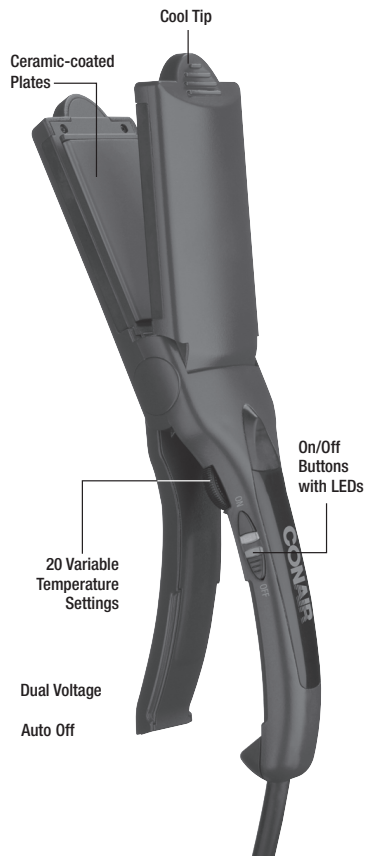
The new ceramic technology is a pleasure to work with and makes styling your hair easier

and the results more professional.

## USING INSTANT HEAT, THE 20 VARIABLE TEMPERATURE SETTINGS AND UNIFORM HEAT RECOVERY SYSTEM

This styling iron features Conair's Instant Heat technology. This Instant Heat technology has 20 variable temperature settings. Every type of hair, from the finest to the curliest and most resistant, has a temperature range that's gentle and safe for it and helps you create the look you want. And that's not all. Conair's professional salon standards of engineering provide you with a Uniform Heat Recovery System that maintains the iron at constant temperatures. There is a constant flow of power to ensure that heat is continuously delivered for optimal styling results, unlike other units that lose heat during use. This provides consistent styling power so that every strand of your hair is set with the same level of heat and comes out the same way for a perfect finish.

## GET TO KNOW YOUR STRAIGHTENING IRON



## URNS CURLS INTO SMOOTH HAIR IN SECONDS



Before

After

## USER MAINTENANCE

Your straightening iron is virtually maintenance-free. No lubrication is needed. Keep all vents and openings clear of dirt and dust. If cleaning becomes necessary, disconnect the unit from the power source, allow to cool and wipe exterior with a cloth. If any abnormal condition occurs, unplug the unit, allow it to cool, and return it for repair to an authorized service representative only. No repairs should be attempted by the consumer.

### CAUTION

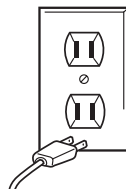
NEVER allow the power supply cord to be pulled, twisted, or severely bent. Never wrap the cord tightly around the appliance. Damage will occur at the high flex point of entry into the appliance, causing it to rupture and short circuit. Inspect the cord frequently for damage. Stop use immediately if damage is visible or if unit stops or operates intermittently.

### STORAGE

When not in use, your appliance is easy to store. Allow appliance to cool, then simply store out of reach of children in a safe, dry location. Do not jerk or strain cord at plug connections. Do not wrap the line cord around the appliance. Allow the cord to hang or lie loose and straight at the point of entry into the appliance.

**WARNING:**  
**IF YOU THINK THE POWER IS OFF WHEN THE SWITCH IS OFF YOU'RE WRONG.**

KEEP AWAY FROM WATER



Everyone knows that electricity and water are a dangerous combination. But did you know that an electric appliance is still electrically live even if the switch is off? If the plug is in, the power is on. So when you are not using your appliances, keep them unplugged.

**ALWAYS UNPLUG SMALL APPLIANCES**

## LIMITED TWO-YEAR WARRANTY

Conair will repair or replace (at our option) your unit free of charge for 24 months from the date of purchase if the appliance is defective in workmanship or materials.

To obtain service under this warranty, return the defective product to the service center listed below, together with your purchase receipt and \$3.00 for postage and handling. California residents need only provide proof of purchase and should call 1-800-3-CONAIR for shipping instructions. In the absence of a purchase receipt, the warranty period shall be 24 months from the date of manufacture.

**ANY IMPLIED WARRANTIES, OBLIGATIONS, OR LIABILITIES, INCLUDING BUT NOT LIMITED TO THE IMPLIED WARRANTY OF MERCHANTABILITY AND FITNESS FOR A PARTICULAR PURPOSE, SHALL BE LIMITED IN DURATION TO THE 24-MONTH DURATION OF THIS WRITTEN, LIMITED WARRANTY.** Some states do not allow limitations on how long an implied warranty lasts, so the above limitations may not apply to you.

**IN NO EVENT SHALL CONAIR BE LIABLE FOR ANY SPECIAL, INCIDENTAL, OR CONSEQUENTIAL DAMAGES FOR BREACH OF THIS OR ANY OTHER WARRANTY, EXPRESS OR IMPLIED, WHATSOEVER.** Some states do not allow the exclusion or limitation of special, incidental, or consequential damages, so the above limitation may not apply to you.

This warranty gives you specific legal rights, and you may also have other rights, which vary from state to state.



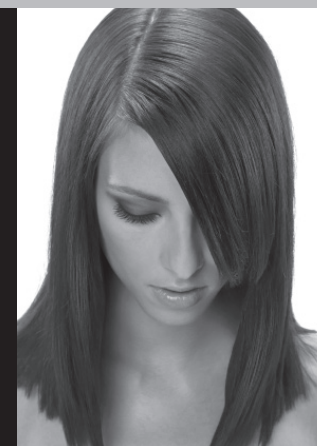
**Service Center**  
Conair Corporation  
Service Department  
7475 N. Glen Harbor Blvd.  
Glendale, AZ 85307

©2006 Conair Corporation  
150 Milford Road, East Windsor, NJ 08520  
7475 N. Glen Harbor Blvd., Glendale, AZ 85307

06NP047

IB-6741

## Instant Heat



## 2" Ceramic Straightener

### Instruction & Styling Guide

For your safety and continued enjoyment of this product, always read the instruction book carefully before using.

# CONAIR®

Model CS41CS

## Free Manuals Download Website

<http://myh66.com>

<http://usermanuals.us>

<http://www.somanuals.com>

<http://www.4manuals.cc>

<http://www.manual-lib.com>

<http://www.404manual.com>

<http://www.luxmanual.com>

<http://aubethermostatmanual.com>

Golf course search by state

<http://golfingnear.com>

Email search by domain

<http://emailbydomain.com>

Auto manuals search

<http://auto.somanuals.com>

TV manuals search

<http://tv.somanuals.com>