



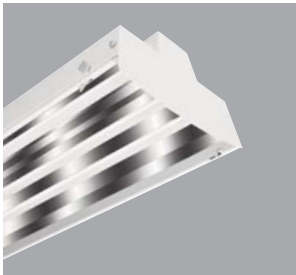
OPEN

DESIGNATION

Blank= No Guard

DESCRIPTION

For maximum light output



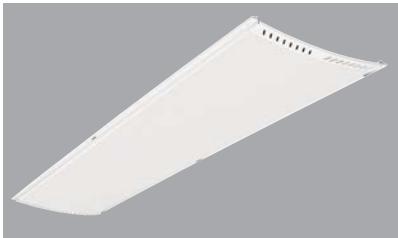
FROSTED ACRYLIC LENS

DESIGNATION

I5-FRM/FL= Frosted Acrylic Lens & Frame (use with general distribution reflector, I5 only)
I5-FRM/CL= Clear Acrylic Lens & Frame (use with general distribution reflector, I5 only)

DESCRIPTION

In white doorframe w/"Herringbone" patterned end rail



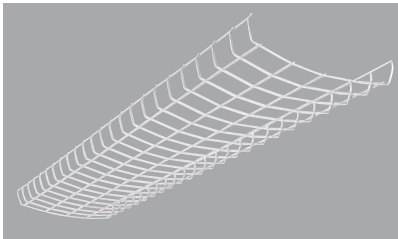
HEAVY DUTY WIREGUARD

DESIGNATION

I5/WG= Heavy Duty Wireguard

DESCRIPTION

Finished in white. Can be used alone or in combination with other shielding



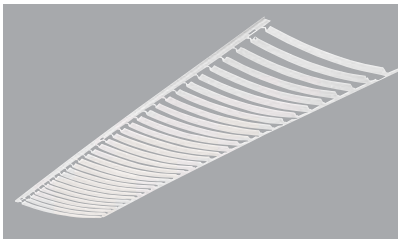
TBW

DESIGNATION

I5/TBW= Thin White Baffle (for I5)
I8/TBW= Thin White Baffle (for I8)

DESCRIPTION

Thin Blade White Baffle w/23° longitudinal shielding



ASYMMETRIC LOUVER

DESIGNATION

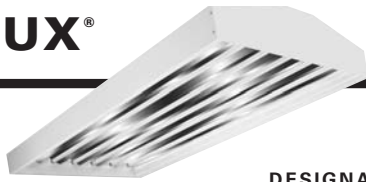
I5/ASY= Asymmetric Directional Louver (use with general distribution reflector)

DESCRIPTION

Can be oriented in either direction for flexibility



Items listed are the major options and accessories available on Metalux Recessed (Parabolic and Recessed) and Surface Fixtures. Additional options and accessories are available. Consult Pre Sales Technical Support for additional information.



	DESIGNATION	DESCRIPTION
OPEN	Blank= No Guard	For maximum light output



	DESIGNATION	DESCRIPTION
PRISMATIC & CLEAR ACRYLIC LENS & ALUMINUM DOORFRAME	HB-FRM/LENS= Prismatic Acrylic Lens & Doorframe for HB (use with general distribution reflector)	
	2HB-FRM/LENS= Prismatic Acrylic Lens & Doorframe for 2HB (use with general distribution reflector)	
	HB-FRM/CL= Clear Acrylic Lens & Doorframe for HB	
	2HB-FRM/CL= Clear Acrylic Lens & Doorframe for 2HB	



	DESIGNATION	DESCRIPTION
WIREGUARD	HB-FRM/WG= Frame and Wireguard for HB	A wide choice of acrylic lenses in a white extruded aluminum doorframe (G1 & G2 optional)
	2HB-FRM/WG= Frame and Wireguard for 2HB	
	HB-FRM/LENS/WG= Frame and Prismatic Acrylic Lens with Wireguard	
	2HB-FRM/CL/WG= Frame and Clear Lens with Wireguard	
	HB-FRM/DROP WG= Frame and Drop Wireguard for HB	
	2HB-FRM/DROP WG= Frame and Drop Wireguard for 2HB	



	DESIGNATION	DESCRIPTION
HEAVY DUTY STOCK WIREGUARD	SWG/2HB-4FT-B= Heavy Duty Wireguard for field installation.	Finished in white
	SWG/HB-4FT-B= Heavy Duty Wireguard for field installation.	



Free Manuals Download Website

<http://myh66.com>

<http://usermanuals.us>

<http://www.somanuals.com>

<http://www.4manuals.cc>

<http://www.manual-lib.com>

<http://www.404manual.com>

<http://www.luxmanual.com>

<http://aubethermostatmanual.com>

Golf course search by state

<http://golfingnear.com>

Email search by domain

<http://emailbydomain.com>

Auto manuals search

<http://auto.somanuals.com>

TV manuals search

<http://tv.somanuals.com>