

SAMPLE NUMBER: 612-50PAR20-120-BK

MODEL	SOURCE	VOLTS	FINISH	OPTIONS
612 Drive-over rated, non-adjustable uplight	Halogen 35PAR20* 35W / PAR20 / medium	120	Painted BK Black BZ Bronze CS City silver VE Verde WT White	T Thermally rated for use outdoors in wood decking (35W max.)
	50PAR20 50W / PAR20 / medium <i>Lamp not included</i> <i>* For use with T option</i>			
			Metal NBR Brass NBZ Bronze	

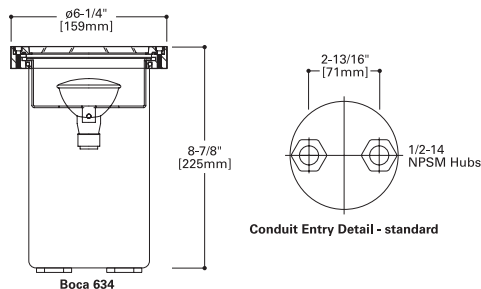


BOCA 612

50W (max)
PAR20 Halogen
Line Voltage

FEATURES

- Non-adjustable uplight
- Stainless steel recessed housing
- Aluminum, brass or bronze trim ring
- Stainless steel hardware
- Drive-over rated to 5000#
- UL / cUL listed
- Three (3) year warranty



SAMPLE NUMBER: 634-50PAR20-120-NBR

MODEL	SOURCE	VOLTS	FINISH	OPTIONS
634 Drive-over rated, non-adjustable uplight	Halogen 50PAR20 50W / PAR20 / medium	120	Metal NBR Brass	T Thermally rated for use outdoors in wood decking TP Tamper-resistant hardware
	<i>Lamp not included</i>			

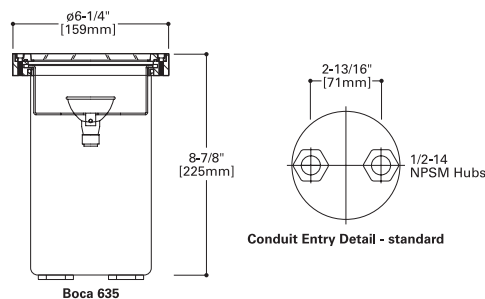


BOCA 634

50W (max)
PAR20 Halogen
Line Voltage

FEATURES

- Non-adjustable uplight
- Stainless steel recessed housing
- Die-cast brass trim ring & collar
- Stainless steel hardware
- Drive-over rated to 5000#
- UL / cUL listed
- Three (3) year warranty



SAMPLE NUMBER: 635-75PAR30-120-NBR

MODEL	SOURCE	VOLTS	FINISH	OPTIONS
635 Drive-over rated non-adjustable uplight	Halogen 50PAR30* 50W / PAR30 / medium	120	Metal NBR Brass	T Thermally rated for use outdoors in wood decking (50W max) TP Tamper-resistant hardware
	75PAR30 75W / PAR30 / medium <i>Lamp not included</i> <i>* For use with T option</i>			



BOCA 635

75W (max)
PAR30 Halogen
Line Voltage

FEATURES

- Non-adjustable uplight
- Stainless steel recessed housing
- Die-cast brass trim ring & collar
- Stainless steel hardware
- Drive-over rated to 5000#
- UL / cUL listed
- Three (3) year warranty

Free Manuals Download Website

<http://myh66.com>

<http://usermanuals.us>

<http://www.somanuals.com>

<http://www.4manuals.cc>

<http://www.manual-lib.com>

<http://www.404manual.com>

<http://www.luxmanual.com>

<http://aubethermostatmanual.com>

Golf course search by state

<http://golfingnear.com>

Email search by domain

<http://emailbydomain.com>

Auto manuals search

<http://auto.somanuals.com>

TV manuals search

<http://tv.somanuals.com>