



Type:

Project:

**Combo Mini Recessed Downlight**  
**One (1) Light Square**  
**New Construction Housing - 7.13" Height**  
**12V Bi-Pin Base MR16 Lamp 75 Watts Max.**

CM0W

CM0B

CM0S

Recessed fixed trim suitable for downlighting applications.

Ultra low profile trim flange for minimum ceiling architecture interference. Provides a sleek, architectural look.

Trim has a durable powder coat finish.

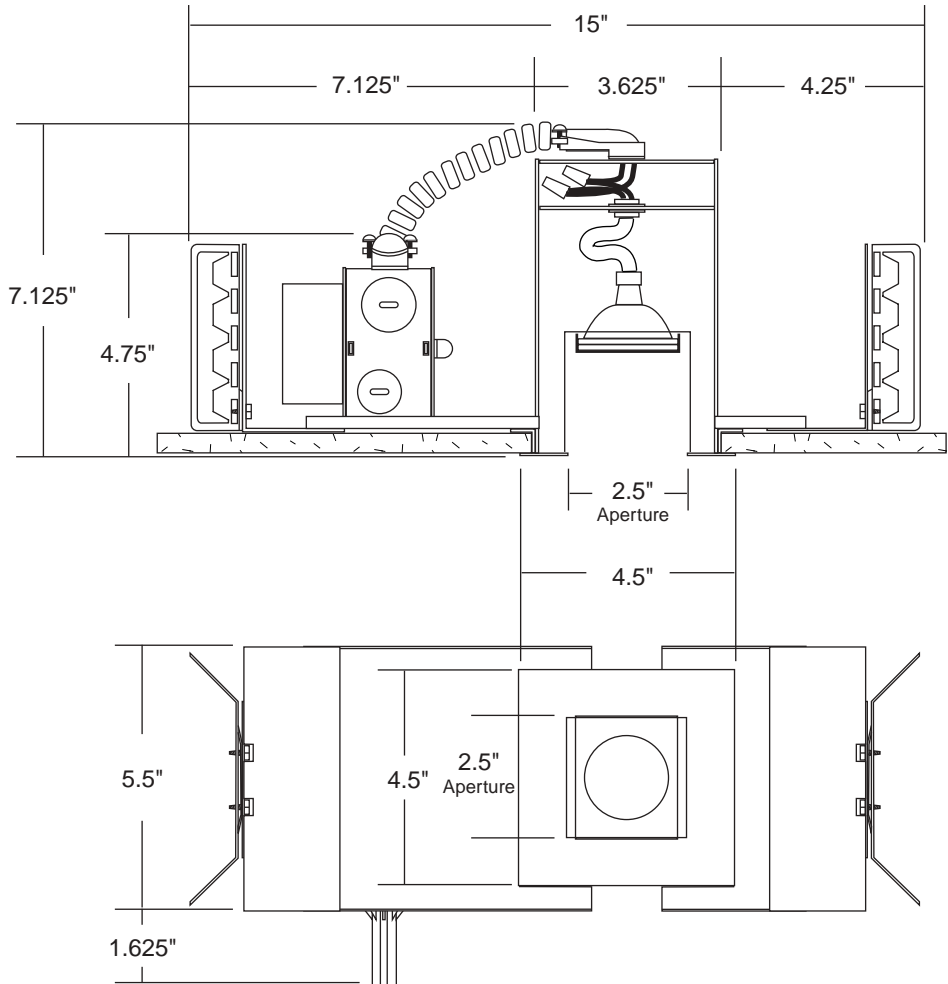
Inside of trim and lamp holder finished with flat black powder coat for reduced lamp glare.

Trim is retained in housing with heavy duty torsion spring clip.

All ComboMini™ fixtures can accept up to two (2) optical accessories per lamp.

**Housing Construction:**  
Plaster frame and housing are 18 gauge CRS with durable powder coat finish.

Integral electronic transformer with 14 gauge CRS galvanized J-Box assembly. External thermal protection. UL listed for through branch wiring for 8 #12, 90°C supply conductors or 60°C supply conductors for end of run.



Provided with two (2) 14 gauge steel butterfly type brackets for black iron installations.

Housing adjusts in plaster frame to accommodate various ceiling thicknesses.

Vent holes in housing (1/2" diameter) provide cooler operation.

Item #	Description	Finish	Voltage / Wattage
CM0W	Combo Mini Recessed Downlight One Light Square	White	12V / 75W Max.
CM0B		Black	
CM0S		Silver	



## Free Manuals Download Website

<http://myh66.com>

<http://usermanuals.us>

<http://www.somanuals.com>

<http://www.4manuals.cc>

<http://www.manual-lib.com>

<http://www.404manual.com>

<http://www.luxmanual.com>

<http://aubethermostatmanual.com>

Golf course search by state

<http://golfingnear.com>

Email search by domain

<http://emailbydomain.com>

Auto manuals search

<http://auto.somanuals.com>

TV manuals search

<http://tv.somanuals.com>