



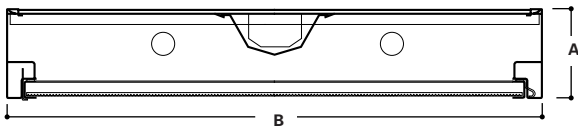
VRMC VRM 2VRM

1' x 4', 2' x 2', 2' x 4'
2, 3, OR 4 LAMPS

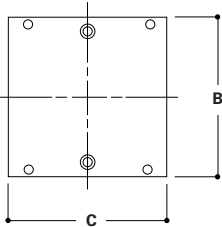
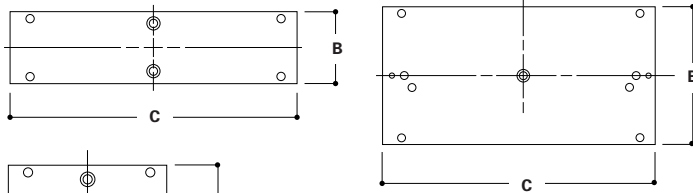
VANDAL RESISTANT LUMINAIRE

- Housing is die-formed code gauge prime CRS. Smooth sides permit flush joints when continuous row mounting. Die-formed captive lampholder brackets
- Ballasts are CBM/ETL Class "P" and positively secured by mounting by mounting bolts. Pressure lock lampholders
- Electrostatically applied baked white polyester powder enamel finish
- Positive cam action steel latches with baked white enamel finish
- Die formed, heavy gauge, flat steel door with reinforced mitered corners and baked white enamel finish. Positive light seals. Frame and lens are secured to housing with 4 or 6 stainless steel TORX® screws

DIMENSIONS



MOUNTING



	A	B	C
VRMC 1' x 4' (100mm) (2 lamp)	3 15/16" (100mm)	12" (305mm)	48" (1219mm)
VRM 1' x 4' (100mm) (3 lamp)	3 15/16" (100mm)	12" (305mm)	48" (1219mm)
2VRM 2' x 2' (100mm)	3 15/16" (100mm)	24" (610mm)	24" (610mm)
2VRM 2' x 4' (100mm)	3 15/16" (100mm)	24" (610mm)	48" (1219mm)

DESCRIPTION

The Fail-Safe VRMC, VRM and 2VRM Series fluorescent luminaires combine a low profile, surface modular design with the latest in energy-efficient technology. Their Energy Saving Ballast complies with Federal Energy Efficiency Standards while a dihedral recessed top allows for cooler operation. Other features include a die-formed housing, surface or stem mounting (single or continuous row), full seam-welded corners and a broad selection of attractive door frames. U.L. listed and C.S.A. certified.

ORDERING INFORMATION

SAMPLE NUMBER: 2VRM-232A-120V-EB81-U

Width Blank=1' 2=2'	Number of Lamps 2, 3, or 4 lamps (Not Included)	LTS=Low Trigger Start (20 Watt) HTS=High Trigger Start (20 Watt)	Ballast Type LE3= Energy Saving Ballast LEOC8= Energy Saving Ballast (T-8 Lamp Only) EB= Generic Electronic Ballast No. of Ballasts 1 or 2 Lamp Size 2=T12 8=T8 5=T5 Biax (For specific electronic ballast specify brand and catalog number)	Options (add as suffix) GL= Internal Single Element Fusing GM= Dual Element Fusing EL4= Emergency Lighting self-contained SMB= Side Mounted Ballast For Stem Applications . (Recommended For 4 Point Suspension) RIF1= Radio Interference Suppressor EKO= End Plate with 7/8" KO (Required for Continuous Row Mounting) RLS= Rotor-Lock Socket (T8 Lamps Only) 6S= Six TORX-head Screws(3 per side) SC= Safety Chain
Series VRMC=1' Width (2 Lamp) VRM=1' Width (3 Lamp) 2VRM=2' Width	Wattage (Length) U6=40W (24") U6T8=32W (24") 20=20W (24") 17=17W T8 (24") U1-5/8=31W T8 (24") BX40=40W Biax (24") 40=40W (48") 32=32W T8 (48")	Voltage 120=120V 277=277V 347=347V UNV=Universal Voltage 120-277		
Door Type Standard=Flat White Steel Door (Leave Blank)	Lens Type ACTF140 = .140 Thick ACTF187 = .187 Thick PA375 = .250 polycarbonate with .125 prismatic overlay (standard with 6S option)			

Free Manuals Download Website

<http://myh66.com>

<http://usermanuals.us>

<http://www.somanuals.com>

<http://www.4manuals.cc>

<http://www.manual-lib.com>

<http://www.404manual.com>

<http://www.luxmanual.com>

<http://aubethermostatmanual.com>

Golf course search by state

<http://golfingnear.com>

Email search by domain

<http://emailbydomain.com>

Auto manuals search

<http://auto.somanuals.com>

TV manuals search

<http://tv.somanuals.com>