

INVUE™

VISION SITE ARCHITECTURAL AREA LUMINAIRE



COOPER Lighting

VISION SITE

ARCHITECTURAL AREA LUMINAIRE

- Site/Parking
- Roadway
- Path of Egress

SOPHISTICATED FORM

Sleek in appearance yet bold in form, the VISION Site luminaire is designed to serve the evolving shape of architecture. VISION Site is offered in two (2) housing sizes to insure proper scale in application.

EXCEPTIONAL CONSTRUCTION

Designed to withstand the rigors of a harsh outdoor environment, the VISION Site luminaire features thick wall die-cast construction and specification level sealing characteristics.

MODERN PERFORMANCE

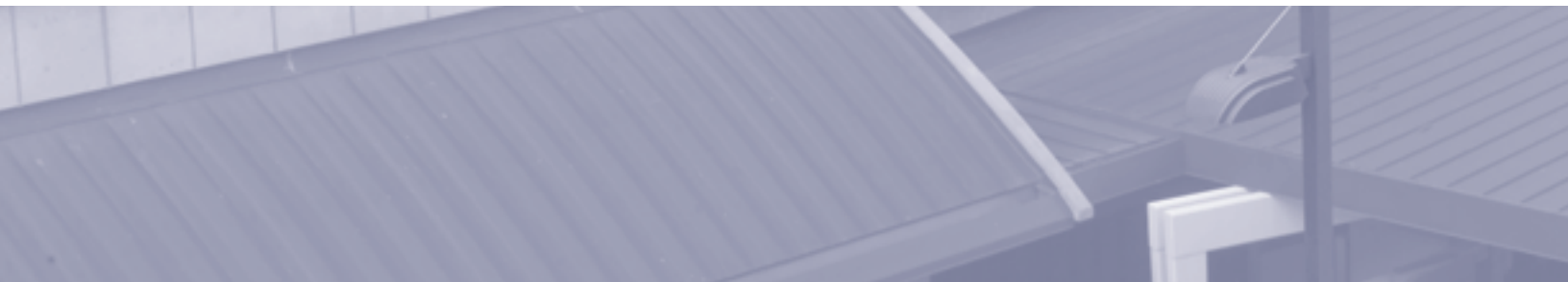
Environmental and legislative challenges continue to propagate as the public awareness of light in the environment expands. VISION SITE responds to these evolving design trends by offering targeted solutions for full cutoff compliance, spill light control, and path of egress illumination, while merging the latest in high efficiency lamp technologies.



Emerging trends in light control and environmental preservation require innovative design solutions. VISION Site responds.

OPTICAL SYSTEMS

- Full Cutoff Performance
- Horizontal Lamp Position
- Rotational Flexibility

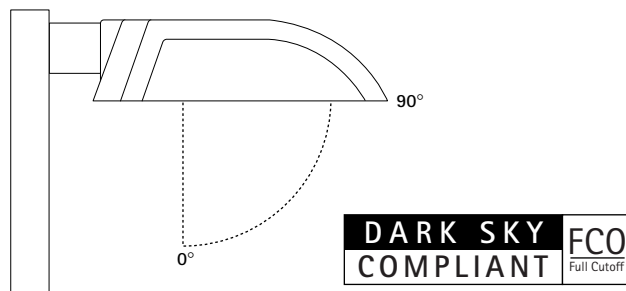


FULL CUTOFF PERFORMANCE

As the Nations respected authority on lighting standards and design recommendations, the IESNA, Illuminating Engineering Society of North America defines four unique luminaire cutoff classifications to quantify the amount of light a fixture directs upward toward the sky.

ALLOWABLE CANDELA	@ 90°	@ 80°
Full Cutoff	0	10%
Cutoff	2.5%	10%
Semi-Cutoff	5%	20%
Non-Cutoff	No Limit	No Limit

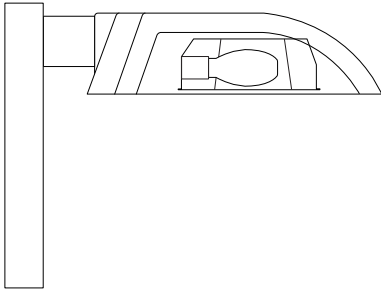
Each of the available VISION Site optical systems meets the strictest "Full Cutoff" classification requirements, ensuring that zero measurable light is directed upward from the luminaire.



FULL CUTOFF

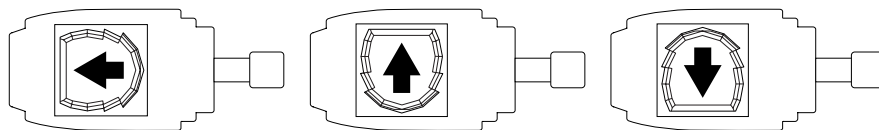
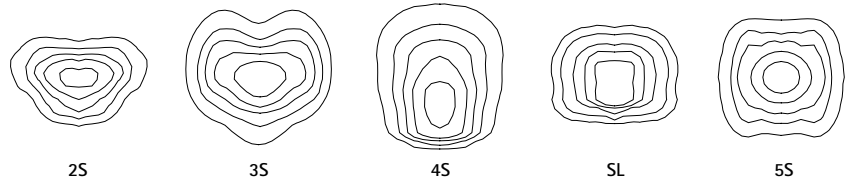
Full cutoff luminaires carry the endorsement of the International Dark Sky Association (IDA) for their usefulness in limiting the detrimental effects of sky glow, otherwise referred to as light pollution.

When faced with local or state adopted lighting ordinances, full cutoff luminaires offer direct compliance in most all circumstances.



HORIZONTAL LAMP POSITION

A horizontal lamp orientation allows for a broad selection of luminaire distribution shapes. Optical systems are available in Type II, III, IV, SL Forward Throw, and Square Type V distributions.



ROTATIONAL FLEXIBILITY

Optical assemblies can be rotated in 90° increments without the use of tools, allowing for manipulation of distribution orientation independent of fixture orientation.

INVUE segmented optical systems establish themselves as an industry benchmark for excellence in performance. Our commitment to optical research and precision build quality result in unequaled levels of performance and repeatability.

OPTICAL EXCELLENCE

- Flawless Facets
- Rigid Construction
- Lamp Options
- Premium Materials



FLAWLESS FACETS

Reflector facets are flat and unobstructed, allowing for a perfect reflection of the lamp's arc tube. All segment faces are clean of rivet heads, tabs, or other means of attachment which may cause streaking in the light distribution.



RIGID CONSTRUCTION

A rigid box enclosure shields optical facets on all sides from performance degrading damage. Each facet bank is secured to both top and bottom of the enclosure for repeatable facet orientation relative to light center.

LAMP OPTIONS

VISION SITE optical systems are offered with a variety of high efficiency lamp sources.



METAL HALIDE/ PULSE START METAL HALIDE

Excellent color rendition up to 92 CRI, high efficacy (lumen per watt).



HIGH PRESSURE SODIUM

High efficacy (lumens per watt), long life.



COMPACT FLUORESCENT

Energy conscious, good color rendition, excellent lumen maintenance.



ELECTRODELESS FLUORESCENT

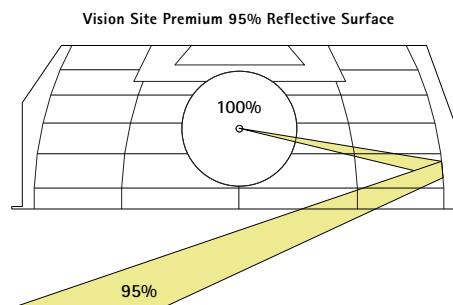
100,000 hour life, zero maintenance, good color rendition.

AVAILABLE LAMP OPTIONS PER HOUSING SIZE

	VXS	VXM
Metal Halide	70, 100, 175W	175, 250, 400W
Pulse Start Metal Halide		250, 320, 350, 400W
High Pressure Sodium	70, 100, 150W	150, 250, 400W
Compact Fluorescent	42, 57W	(2) 57, (2) 70W
Electrodeless Fluorescent		85W

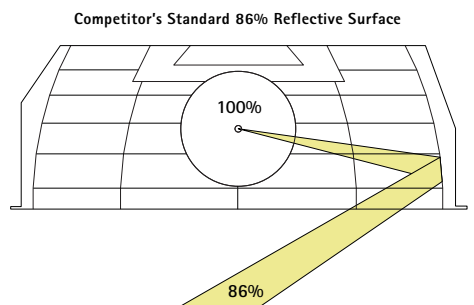
PREMIUM MATERIALS

A commitment to using premium 95% reflective aluminum sheet for all reflective faces allows for efficiency gains of up to 10%.



PREMIUM MATERIAL

Premium material reflects a higher intensity of light in a more controllable fashion.



STANDARD MATERIAL

Standard material reflects a lower intensity of light.

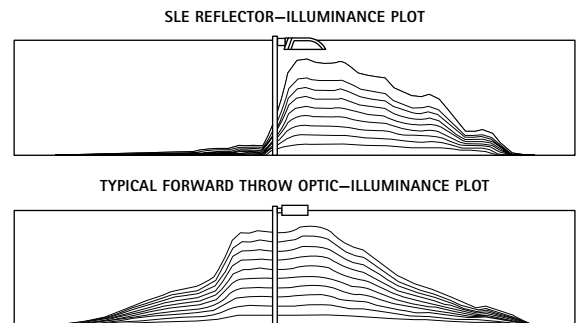
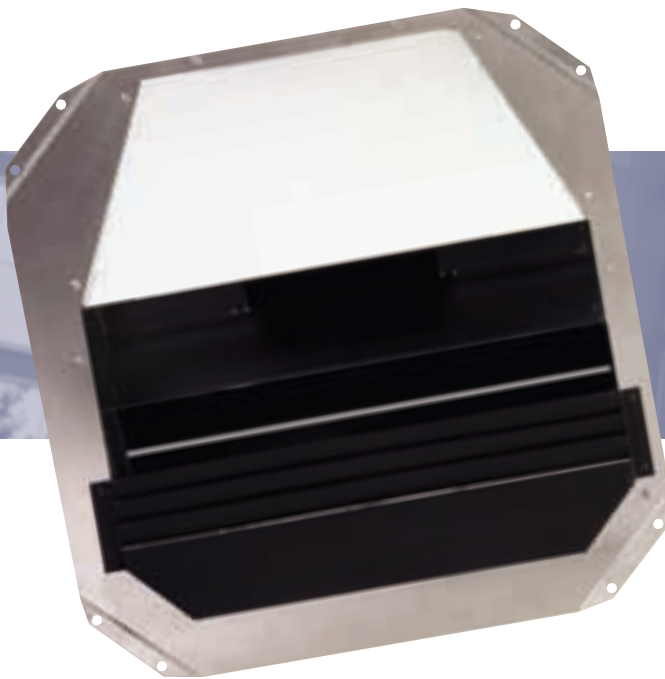




The solution for spill light concerns and perimeter lighting applications is the SLE—Spill Light Eliminator optic.

SPILL LIGHT CONTROL

- Spill Light Eliminator (SLE)



SPILL LIGHT ELIMINATOR (SLE):

Allowing less than 2% of the total lamp output to fall behind the pole with no sacrifice in forward reaching performance the SLE is the benchmark for effective spill control. Used along site perimeters and property lines, the SLE keeps the light inside and the darkness out.

EGRESS + APPLICATIONS

- Egress Emergency Lighting
- Site Lighting Applications
- Mounting Configurations

EGRESS EMERGENCY LIGHTING

VISION offers two (2) unique solutions to provide uninterrupted illumination to the Path of Egress under emergency conditions.

42CF/EM

Internal battery pack supplies 60% of the lamp's initial rated lumens for a period of ninety minutes in the event of power failure. Battery supplies power to one 42W compact fluorescent lamp. Features LED status indicator light and battery test switch for system checks.



EM/SC [Emergency | Separate Circuit]

Auxiliary quartz socket mounted to optical assembly. Socket is wired to separate relay controlled emergency power source.

VISION offers three (3) additional egress options which provide immediate light output upon power system reactivation.

42/57/114/140 CF

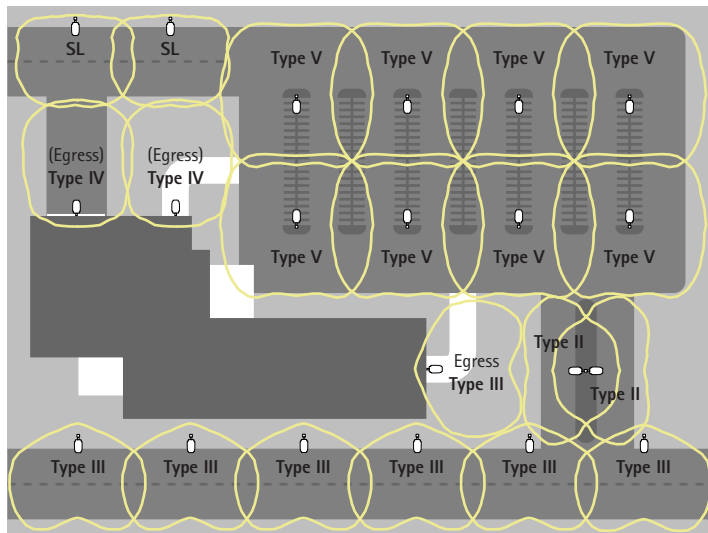
Fluorescent lamp sources combined with electronic ballasts achieve full brightness within seconds of reactivation.

Q [Quartz Restrike]

Auxiliary quartz socket mounted to optical assembly. Quartz lamp energizes upon power reactivation and extinguishes once HID lamp re-ignites.

EM [Quartz Restrike with Time Delay]

Auxiliary quartz socket mounted to optical assembly. Quartz lamp energizes upon cold start and power reactivation, extinguishing once HID lamp has achieved partial brightness.



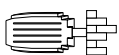
SITE LIGHTING APPLICATIONS

Each site presents unique challenges of shape, design criteria, and environmental concerns. Whether designing for Illuminance, Luminance or Small Target Visibility (STV), the available selection of distribution shapes, lamp options, and housing sizes provide a myriad of tools to custom tailor your lighting solution.

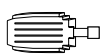
MOUNTING CONFIGURATIONS

Vision Site is available in seven (7) unique luminaire mounting configurations (flat lens E.P.A's shown).

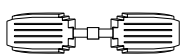
Wall Mount



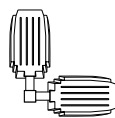
Arm Mount Single
E.P.A
VXS 1.27 VXM 1.6



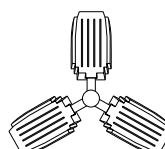
Arm Mount 2 @ 180°
E.P.A
VXS 2.54 VXM 3.2



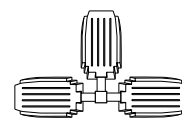
Arm Mount 2 @ 90°
E.P.A
VXS 2.54 VXM 3.2



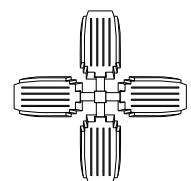
Arm Mount 3 @ 120°
E.P.A
VXS 3.6 VXM 4.5



Arm Mount 3 @ 90°
E.P.A
VXS 3.6 VXM 4.5



Arm Mount 4 @ 90°
E.P.A
VXS 4.13 VXM 5.55



FORM + PERFORMANCE



VISION BOLLARD



VISION WALL



VISION FLOOD

The Vision Series' consistency in architectural form and performance allows its use on site lighting projects to provide a coordinated look that enhances the architectural setting.



SUSPENSION FORM

ICON's suspension form integrates stainless steel structural rods between die-cast mounting cleats to generate a form ideally suited to more dynamic architectural environments.



INSTALLATION + MAINTENANCE

- Fixture
- Door
- Ballast Tray

FIXTURE

Fixture attaches through two (2) support bolts (5/16" VXS and 1/2" on VXM) anchored pole-side to a threaded steel reinforcement plate, then guided through integral positioning channels in the extruded arm to the back of the housing. Two (2) lock nuts secure fixture head firmly to arm and pole. Doorframe and ballast tray feature toolless hinging and removal, allowing ample room for tool access during installation.



DOOR

Door frame assembly features toolless release and removal. Raised door retainer on hinge bracket prevents accidental release while hinged down for maintenance.



BALLAST TRAY

One-piece unitized ballast tray can be accessed and removed without the use of tools. Integral handle ensures safe removal when disengaging and transporting tray.







HOUSING

One-piece, die-cast aluminum housing maintains a nominal 0.125" wall thickness. Integral reveal channels along top surface of housing promote heat extraction and prolonged electrical component life. Solid cast wall separates optical chamber from electrical area.

DOOR

One-piece die-cast door frame. Door frame opens in a toolless fashion via release of one (VXS) or two (VXM) flush mounted toolless latches. Tempered 1/8" thick clear glass lens seals to door with a weather-tight continuous gasket. Optical chamber is sealed against entry of dirt and moisture by a continuous door mounted gasket which firmly compresses against optical enclosure walls.

LENS

Impact resistant 1/8" thick tempered clear flat glass.



PRODUCT SPECIFICATIONS

- Features + Benefits

OPTICAL SYSTEMS

Choice of five (5) efficiency segmented optical systems constructed of premium 95% reflective anodized aluminum sheet. Optical segments are rigidly mounted inside a thick gauge aluminum housing for superior protection. All segment faces are clean of rivet heads, tabs, or other means of attachment which may cause streaking in the light distribution. Optional high efficiency hydroformed reflectors available in VXM housing only in four (4) distributions patterns. All reflector modules feature toolless removal, quick disconnect wiring plugs, and are field rotatable in 90° increments. HID lamp sources in medium housing (VXM) optics feature mogul-base lampholders while the small housing (VXS) optics feature medium-base lampholders.

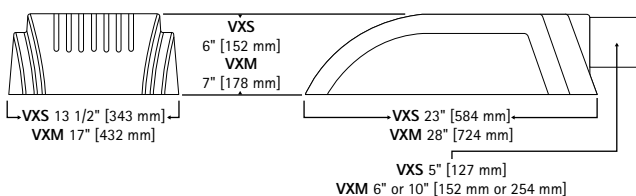
ARM

One-piece extruded rectangular arm available in standard 5" (VXS), or 6", and 10" lengths (VXM). Internal bolt guides allow easy positioning of fixture during installation to pole or wall surface.

SUSPENSION MOUNT [Not Shown]

Die-cast cleat factory mounted to luminaire and finished in luminaire color. Stainless steel structural rod measures 1/2" in diameter and is provided in luminaire finish color or optional natural finish. Product works in conjunction with accessory VXS 5" arm and VXM 10" arm. INVUE poles provided pre-drilled for suspension mount option. See INVUE pole brochure for a complete selection of matching poles.

DIMENSIONS





ELECTRICAL TRAY

Ballast and related electrical componentry are mounted to a reinforced one piece galvanized steel tray with integral handle. For ease of maintenance, tray hinges open via toolless release of one spring loaded latch. Electrical quick disconnects allow tray to be completely removed from housing providing ample hand and tool room for attachment of fixture during installation, and a safer servicing environment. Optional tray mounted fuse connections offer a distinct and easy to maintain alternative to common inline fuse connections.

FINISH

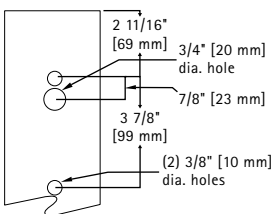
Housing and arm finished in a 5 stage premium TGIC polyester powder coat paint, 2.5 mil nominal thickness for superior protection against fade and wear. Standard colors include black, bronze, grey, white, dark platinum, and graphite metallic. RAL and custom color matches available. Consult your INVUE Lighting Systems Representative for more information.

Certifications

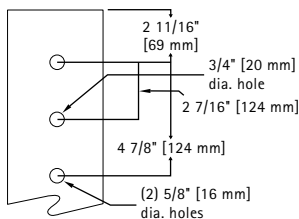
IP66 Rated [VXS]	25°C Ambient	U.L. 1598 Listed	
IP54 Rated [VXM]	40°C Ambient	ISO 9001	FCO Full Cutoff
CSA Listed	3G Vibration Tested		

DRILLING PATTERNS

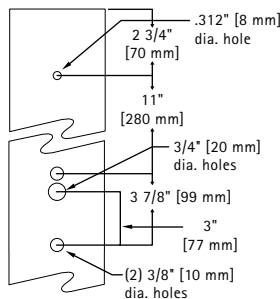
VXS (TYPE "E")



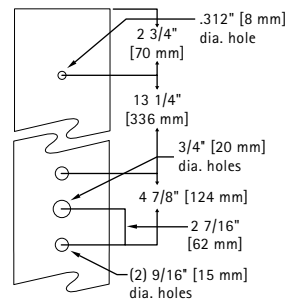
VXM (TYPE "M")



VXS Suspension Mount (TYPE "F")

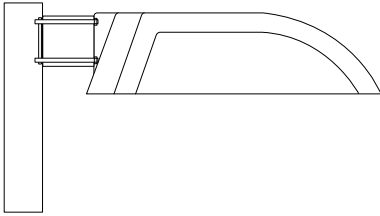


VXM Suspension Mount (TYPE "G")



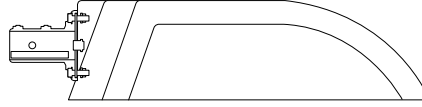
MOUNTING OPTIONS + ACCESSORIES

- Specifications + Dimensions



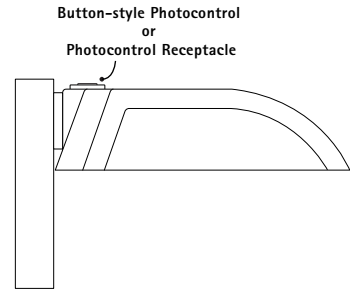
EXTRUDED ARM

Standard extruded arm features internal bolt guides. Twin support bolts (5/16" on VXS and 1/2" on VXM) secure fixture to pole. Standard VXM 10" arm should be utilized when applying luminaires at 90°. Use standard VXS 5" arm regardless of luminaire orientation on pole.



MAST ARM ADAPTER

Cast aluminum mast arm adapter secures fixture head to nominal 2" pipe size (2 3/8" O.D.) horizontal steel tenon arm. Available on VXM fixture only. Adapter casting slip fits over tenon arm and is secured via two (2) stainless steel set screws. Finished to match fixture.

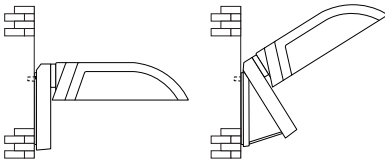


DIRECT MOUNT

Fixture head mounts directly to pole with no accessory arm required. Cast adapter piece corrects housing tilt angle to insure horizontal glass orientation.

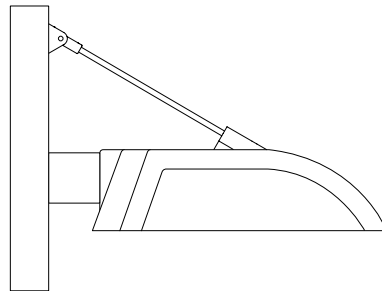
PHOTOCONTROL

Medium VXM fixture available with a gasketed photocontrol receptacle for mounting of a standard NEMA base photocell (ordered separately). Small VXS available with an internal button-style photocell with sensor located on housing top panel.



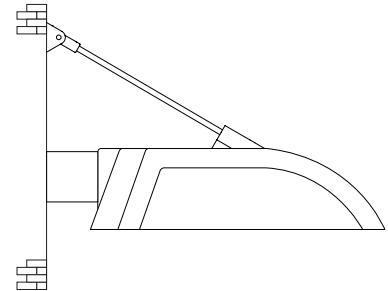
WALL MOUNT ADAPTER

Two-piece cast aluminum wall mount adapter kit. Back panel secures to wall via four (4) bolts (supplied by others). Internal prop rod assembly supports fixture weight during installation, providing easy access to internal wiring compartment. Available as a direct mount kit or with a 5" (VXS), or 6" (VXM) extruded arm to offset fixture from wall.



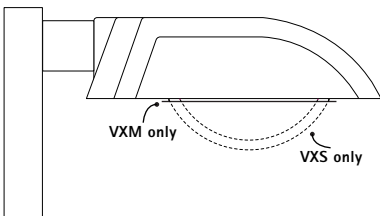
POLE MOUNT SUSPENSION

Die-cast aluminum clevis assemblies attach at top of fixture and pole with stainless steel hardware. Clevis assemblies are painted to match fixture. Stainless steel 1/2" diameter structural rod can be finished to match, or left in natural finish. Use kit in conjunction with standard VXS 5" or VXM 10" extruded arm accessories.



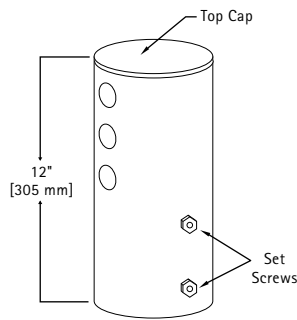
WALL MOUNT SUSPENSION

Die-cast clevis and extruded arm attached to finished wall mount plate. Clevis and plate assemblies are finished to match luminaire. Stainless steel 1/2" diameter rod can be finished to match, or left in a natural finish. Use kit in conjunction with VXS 5" or VXM 10" extruded arm accessories. Four (4) lag bolts necessary to secure bracket to wall (provided by others).



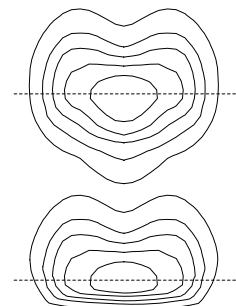
VANDAL SHIELD

Surface mounted 3/16" thick molded polycarbonate lens. Treated with UV inhibitor to discourage the gradual discoloration that results from exposure to sunlight and metal halide lamps.



TENON ADAPTER

Tenon adapters available to slip fit over poles equipped with nominal 2" pipe size steel tenons (2 3/8" O.D., 4" length) or nominal 3" pipe size steel tenons (3 1/2" O.D., 5" length). Adapter secures to tenon via two (2) stainless steel set screws. Painted to match fixture.



HOUSE SIDE SHIELD

Internal house side shield is specially designed to reduce light concentration behind the pole while maintaining street side efficiency. Available in Type II, III, and IV distributions only.

ORDERING INFORMATION

Sample Number: VXM-400-MH-MT-35-BK-PRCPS-L



Product Family¹
VXS=Vision Site Small
VXM=Vision Site Medium

Lamp Wattage²
HID
 70=70W
 100=100W
 150=150W
 175=175W
 250=250W
 320=320W³
 350=350W³
 400=400W⁴
Compact Fluorescent
 42=42W⁵
 57=57W^{5,6}
 114=(2) 50W⁷
 140=(2) 70W⁷
Electroless Fluorescent
 85=85W⁸

Lamp Type
MH=Metal Halide
MP=Pulse Start Metal Halide
HPS=High Pressure Sodium
CF=Compact Fluorescent⁹
QL=Electroless Fluorescent

Voltage¹⁰
 120=120V
 208=208V
 240=240V
 277=277V
 347=347V
 480=480V
DT=Dual-Tap wired 277V¹¹
MT=Multi-Tap wired 277V¹¹
TT=Triple-Tap wired 347V¹¹

Distribution
 2F=Design 20 Formed¹²
 2S=Type II
 3F=Type IV 30 Formed¹²
 3S=Type III
 4F=Type V 40 Formed¹²
 4S=Type IV
 5F=Type V 50 Formed¹²
 5S=Type V
SL=Forward Throw Spill Light Eliminator

Colors
 (add as suffix/must specify)¹³
BK=Black
AP=Grey
BZ=Bronze
WH=White
DP=Dark Platinum
GM=Graphite Metallic

Structural Options
 (add as suffix)
Pole Mount
PRCPS=Painted Strut Rod and Clevis Set for Square Poles¹⁴
PRCSS=Stainless Steel Finished Strut Rod and Clevis Set for Square Poles¹⁴
PRCPR=Painted Strut Rod and Clevis Set for Round Poles¹⁵
PRCSR=Stainless Steel Finished Strut Rod and Clevis Set for Round Poles¹⁵

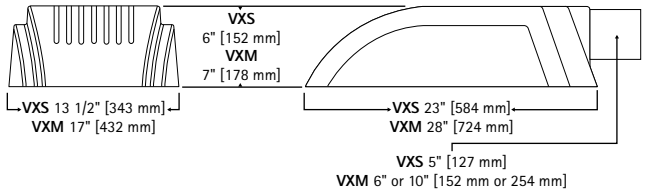
Wall Mount
WRCP=Painted Strut Rod and Clevis Set¹⁶
WRCS=Stainless Steel Strut Rod and Clevis Set¹⁶

Options (add as suffix)
F=Single Fuse (120, 277, or 347V) Specify Voltage
FF=Double Fuse (208, 240 or 480V) Specify Voltage
Q=Quartz Restrike¹⁷
EM=Quartz Restrike with Delay (Also Strikes at Cold Start)¹⁷
EM/SC=Quartz Emergency Separate Circuit¹⁷
42CF/EM=Emergency Battery Backup¹⁸
R=NEMA Twistlock Photocontrol Receptacle (VXM Only)
PC=Button Photocontrol (VXS Only/Specify Voltage)
DS=Dual Fluorescent Switching Control¹⁹
HS=House Side Shield²⁰
VS=Polycarbonate Vandal Shield
T=Terminal Block (VXM Only)
L=Lamp Included

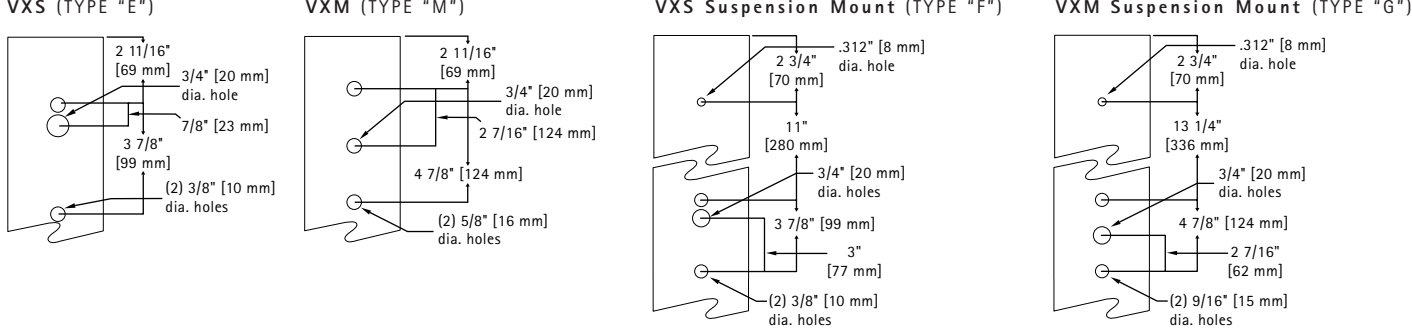
Accessories (order separately/replace XX with color suffix)
MA1071-XX=VXS 5" Arm For Square Pole
MA1074-XX=VXS 5" Arm For Round Pole
MA1050-XX=VXM 6" Arm For Square Pole
MA1051-XX=VXM 10" Arm For Square Pole²¹
MA1052-XX=VXM 6" Arm For Round Pole
MA1053-XX=VXM 10" Arm For Round Pole²¹
MA1076-XX=VXS Direct Mount For Round Pole
MA1056-XX=VXM Direct Mount For Square Pole
MA1057-XX=VXM Direct Mount For Round Pole
MA1200-XX=VXS Direct Wall Mount Kit²²
MA1077-XX=VXS Wall Mount Kit with 5" Arm²²
MA1201-XX=VXM Direct Wall Mount Kit²²
MA1054-XX=VXM Wall Mount Kit with 6" Arm²²
MA1207-XX=VXM Mast Arm Adapter
MA1101-XX=VXS Single Arm Tenon Adapter for 2 3/8" O.D. Tenon
MA1102-XX=VXS 2 @ 180° Tenon Adapter for 2 3/8" O.D. Tenon
MA1103-XX=VXS 3 @ 120° Tenon Adapter for 2 3/8" O.D. Tenon
MA1104-XX=VXS 4 @ 90° Tenon Adapter for 2 3/8" O.D. Tenon
MA1105-XX=VXS 2 @ 90° Tenon Adapter for 2 3/8" O.D. Tenon
MA1106-XX=VXS 3 @ 90° Tenon Adapter for 2 3/8" O.D. Tenon
MA1107-XX=VXS 2 @ 120° Tenon Adapter for 2 3/8" O.D. Tenon
MA1108-XX=VXS Single Arm Tenon Adapter for 3 1/2" O.D. Tenon
MA1109-XX=VXS 2 @ 180° Tenon Adapter for 3 1/2" O.D. Tenon
MA1110-XX=VXS 3 @ 120° Tenon Adapter for 3 1/2" O.D. Tenon
MA1111-XX=VXS 4 @ 90° Tenon Adapter for 3 1/2" O.D. Tenon
MA1112-XX=VXS 2 @ 90° Tenon Adapter for 3 1/2" O.D. Tenon
MA1113-XX=VXS 3 @ 90° Tenon Adapter for 3 1/2" O.D. Tenon
MA1114-XX=VXS 2 @ 120° Tenon Adapter for 3 1/2" O.D. Tenon
MA1017-XX=VXM Single Arm Tenon Adapter for 2 3/8" O.D. Tenon
MA1018-XX=VXM 2 @ 180° Tenon Adapter for 2 3/8" O.D. Tenon
MA1019-XX=VXM 3 @ 120° Tenon Adapter for 2 3/8" O.D. Tenon
MA1048-XX=VXM 2 @ 90° Tenon Adapter for 2 3/8" O.D. Tenon
MA1115-XX=VXM 3 @ 90° Tenon Adapter for 2 3/8" O.D. Tenon
MA1116-XX=VXM 2 @ 120° Tenon Adapter for 2 3/8" O.D. Tenon
MA1010-XX=VXM Single Arm Tenon Adapter for 3 1/2" O.D. Tenon
MA1011-XX=VXM 2 @ 180° Tenon Adapter for 3 1/2" O.D. Tenon
MA1012-XX=VXM 3 @ 120° Tenon Adapter for 3 1/2" O.D. Tenon
MA1013-XX=VXM 4 @ 90° Tenon Adapter for 3 1/2" O.D. Tenon
MA1014-XX=VXM 2 @ 90° Tenon Adapter for 3 1/2" O.D. Tenon
MA1016-XX=VXM 3 @ 90° Tenon Adapter for 3 1/2" O.D. Tenon
MA1015-XX=VXM 2 @ 120° Tenon Adapter for 3 1/2" O.D. Tenon
OA/RA1016=Photocontrol—Multi-Tap
OA/RA1027=Photocontrol—480V
OA/RA1201=Photocontrol—Multi-tap (347V)

NOTE: 1 Arm not included. See accessories. 2 All HID lamps are mogul-base in VXM and medium-base in VXS. 3 Pulse Start Metal Halide only (320 and 350W). 4 400W MH requires reduced envelope ED28 Lamp. 5 Compact Fluorescent only. Available in VXS with Type 3S, 4S and 5S distributions only. 6 Nominal M.O.L. lamp length of 57W CFL not to exceed 7". 7 Dual 57 and dual 70W Compact Fluorescent lamp option available in VXM housing in Type 4S distribution only. 8 Electroless Fluorescent QL lamp only. Available in VXM housing in Type 3S and 5S distributions only. 120V only. 9 Compact Fluorescent ballasts contain internal fusing. No supplemental fusing is necessary. CF ballast are 120 through 277V. 10 Products also available in non-US voltages and 50Hz for international markets. Consult factory for availability and ordering information. 11 Dual-Tap is 120/277V wired 277V. Multi-Tap is 120/208/240/277V wired 277V. Triple-Tap ballast is 120/277/347V wired 347V. 12 2F, 3F, 4F, 5F and SL optics available in VXM only. 13 RAL and custom color matches available. Consult your INVUE Lighting Systems Representative for more information. 14 Square pole mount structural options do not include arm assembly (See Accessories). Compatible with 5" MA1071 arm for VXS, or 10" MA1051 arm for VXM only. 15 Round pole mount structural options do not include arm assembly (See Accessories). Compatible with 5" MA1074 arm for VXS, or 10" MA1053 arm for VXM only. 16 Wall mount structural options do not include arm assembly (See Accessories). Compatible with 5" MA1071 arm for VXS, or 10" MA1051 arm for VXM only. 17 Quartz options not available with SL optic. 18 Battery backup provides 90 minutes of supplemental light at 60% of initial rated lamp lumens. VXS Type 3S, 4S, 5S optics only. Must specify 42W Compact Fluorescent lamp. 19 Dual switching requires dual 57W or dual 70W Compact Fluorescent lamps, and allows independent switching control of each lamp through use of two (2) electronic ballasts. Allows 50% power reduction. 20 House side shield not available on 5S and SL optics. 21 Use when mounting VXM fixture heads at 90° increments. 22 For use in down lighting applications only.

DIMENSIONS



DRILLING PATTERNS



WATTAGE TABLE

	VXS	VXM
Metal Halide	70, 100, 175W	175, 250, 400W
Pulse Start Metal Halide		250, 320, 350, 400W
High Pressure Sodium	70, 100, 150W	150, 250, 400W
Compact Fluorescent	42, 57W	(2) 57, (2) 70W
Electroless Fluorescent		85W

SHIPPING DATA

	VXS	VXM
Net. Weight (lbs.)	35	51
Volume (cu. ft.)	3.00	3.18
E.P.A.	1.05	1.30

NOTE: The above are approximate weights and volumes.



POLES
 INVUE Lighting Systems offers a comprehensive package of steel, aluminum and decorative poles to suit any site lighting application. Consult the INVUE Poles brochure for ordering information and product specifications.

STANDARD COLORS





CUSTOMER FIRST CENTER
1121 HIGHWAY 74 SOUTH
PEACHTREE CITY, GEORGIA 30269
770.486.4800
FAX: 770.486.4801

Domestic Facilities, USA

Cranbury, New Jersey
Elk Grove Village, Illinois
Irving, Texas
Ontario, California
Peachtree City, Georgia

International Sales, USA

Peachtree City, Georgia

CANADA

Cooper Lighting
5925 McLaughlin Road
Mississauga, Ontario L5R 1B8
905.507.4000
Fax: 905.586.7049

Domestic Facilities, Canada

Calgary, Alberta
Chomedey, Laval P.Q.

Cooper Lighting
All rights reserved
Printed in USA

The Cooper Lighting Family

Halo
Portfolio
Metalux
Neo-Ray
Corelite
Lumark
INVUE
McGraw-Edison
Streetworks
Sure-Lites
Fail-Safe
Shaper
Iris
Lumière
MWS

VISION SITE

ARCHITECTURAL AREA LUMINAIRE



Free Manuals Download Website

<http://myh66.com>

<http://usermanuals.us>

<http://www.somanuals.com>

<http://www.4manuals.cc>

<http://www.manual-lib.com>

<http://www.404manual.com>

<http://www.luxmanual.com>

<http://aubethermostatmanual.com>

Golf course search by state

<http://golfingnear.com>

Email search by domain

<http://emailbydomain.com>

Auto manuals search

<http://auto.somanuals.com>

TV manuals search

<http://tv.somanuals.com>