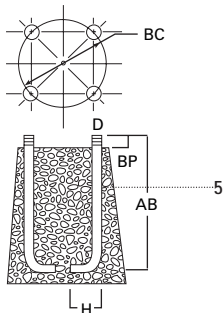
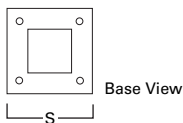
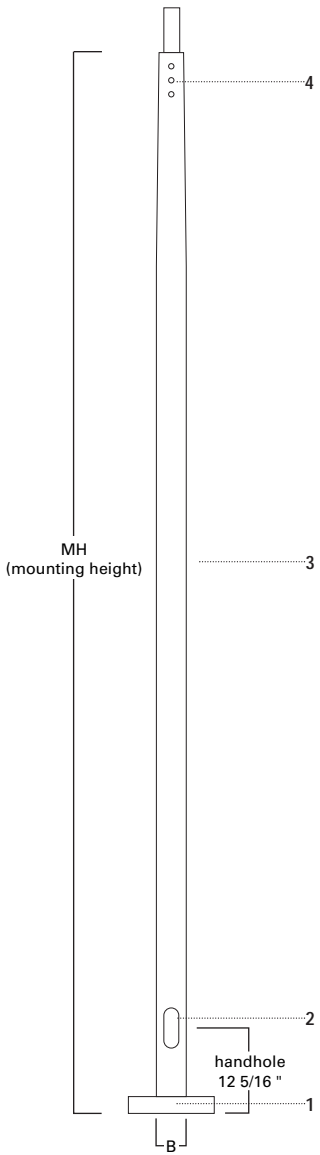


# STS SQUARE TAPERED STEEL

20'—39' MOUNTING HEIGHT



## SPECIFICATION FEATURES

- 1 ··· ASTM Grade steel base plate with ASTM A366 base cover.
- 2 ··· Hand hole assembly 3" x 5" on STS poles.
- 3 ··· Steel shaft 55,000 PSI. Shot blasted and painted with polyester powder coat.
- 4 ··· Drilled or Tenon (specify).
- 5 ··· Anchor bolt per ASTM A576 with (2) nuts, (2) flat washer, and (1) lock washer. Nuts, washers and threaded portion of bolt are hot dip galvanized. 3" hook for 3/4" bolt. 4" hook for 1" bolt.

## FOUR BOLT ANCHORAGE [See ordering information]

- BC=Bolt Circle
- BP=Bolt Projection
- AB=Bolt Dimensions
- D=Bolt Diameter
- H=Bolt Dimensions

## FINISH COLORS [See ordering information]

- F=Dark Bronze
- G=Galvanized
- V=Grey
- W=White
- Y=Black

**WARNING:** THE USE OF UNAUTHORIZED ACCESSORIES SUCH AS BANNERS, SIGNS OR PENNANTS FOR WHICH THE POLE WAS NOT DESIGNED FOR VOIDS THE COOPER LIGHTING WARRANTY AND MAY RESULT IN POLE FAILURE CAUSING SERIOUS INJURY OR PROPERTY DAMAGE. COOPER LIGHTING'S POLE WARRANTY IS ALSO VOIDED IF LUMINAIRE IS NOT INSTALLED AT TIME OF POLE INSTALLATION.

ORDERING INFORMATION

SAMPLE NUMBER: STS7A30SFM1XG

Square	Straight	Steel	Shaft <sup>3</sup> Size	Wall Thickness	Mounting Height (ft.)	Base Type	Finish	Fixture Mounting & Type	No. & Location of Arms	Arm Lengths	Accessories (Ground Lug)
S	T	S	7	A	30	S	F	M	1	X	G

Mtg. Height	Catalog <sup>1,2</sup> Number	Wall Thickness	Base Square (In.)	Bolt Circle Dia. (In.)	Bolt Proj. (In.)	Shaft Size (In.)	Anchor Bolt Dia. & Length (In.)	Net. Wt. (Lbs.)	EPA (Sq. Ft.) <sup>4</sup> At Pole Top	EPA (Sq. Ft.) <sup>4</sup> 2' Above Pole Top	Max. Fixture Load—Include Bracket (Lbs.)
MH			S	BC	BP	B	AB		80	90	100
20	STS6A20SF	.120									
25	STS6A25SF	.120									
30	STS7A30SF	.120									
30	STS7D30SF	.180									
35	STS8A35SF	.120									
39	STS8A39SF	.120									

NOTES: 1 Catalog number includes pole with anchor bolts with double nuts (BEFORE INSTALLING ANCHOR BOLTS MAKE SURE PROPER ANCHOR BOLT TEMPLATE IS OBTAINED FROM COOPER LIGHTING HEADQUARTERS).

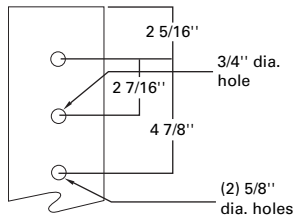
2 Tenon size or machining for rectangular arms must be specified. Hand hole is located 180° from single arm.

3 Shaft size, base plate, anchor bolts and projections may vary slightly—all dimensions nominal.

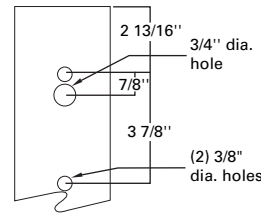
4 EPAs based on shaft properties with wind normal to flat. EPAs calculated using base wind velocity as indicated plus 30% gust factor.

DRILLING PATTERN

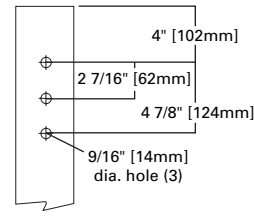
Type "M" [RCL, Landau, Galleria and Vision]



Type "E" [Concourse III]



Type "Z" [Credenza and Cirrus]



MACHINING FOR RECTANGULAR ARMS [Add as suffix]

Designation Letter & Number	Designation Letter & Number	Designation Letter & Number	Quantity & Location
M1	E1	Z1	Single
M2	E2	Z2	2 @ 180°
M3	E3	Z3	3 @ 120°
M4	E4	Z4	4 @ 90°
M5	E5	Z5	2 @ 90°

NOTES: Refer to Fixture Drilling Options on page 160.

MOUNTING OPTIONS [Add as suffix]

Fixed Tenon	Designation Number	O.D. (In.)	Length (In.)
	1	2 3/8	3 1/2
	2	2 3/8	4
	3	3 1/2	5
	9	3	4

ACCESSORIES

- A=1/2" tapped hub<sup>1</sup>
- B=3/4" tapped hub<sup>1</sup>
- C=Convenience outlet<sup>2</sup>
- G=Grounding lug (max. wire #8 AWG)
- H=Additional hand hole and cover—  
12" below pole top—90° from hand hole.

NOTES: 1 Location is 3' above base—90° from hand hole.  
2 Outlet is located 4' above base and on same side of pole as hand hole, unless specified otherwise. Receptacle not included, provision only.

## Free Manuals Download Website

<http://myh66.com>

<http://usermanuals.us>

<http://www.somanuals.com>

<http://www.4manuals.cc>

<http://www.manual-lib.com>

<http://www.404manual.com>

<http://www.luxmanual.com>

<http://aubethermostatmanual.com>

Golf course search by state

<http://golfingnear.com>

Email search by domain

<http://emailbydomain.com>

Auto manuals search

<http://auto.somanuals.com>

TV manuals search

<http://tv.somanuals.com>