

BTSHS01

## Bluetooth Stereo Headset



**corega**<sup>®</sup>

***User Manual***



# Contents

BTSHS01 User Manual

1. Before Starting.....	2
2. Product Introduction.....	3
2.1 Features.....	3
2.2 Package Contents.....	3
2.3 Hardware Description.....	4
2.4 Product Configuration.....	4
2.5 LED Description.....	5
3. Charge Batteries.....	6
4. Start Using.....	7
4.1 Use with audio devices.....	7
(1) Power On.....	7
(2) 3.5mm audio connector.....	7
(3) Pairing.....	8
(4) Wearing Headset.....	8
(5) Adjusting Volume.....	9
4.2 Use with mobile phone.....	10
(1) Bluetooth Headset/Switch on mobile phone.....	10
(2) Pairing.....	11
(3) Adjusting Volume.....	12
(4) Start Headset Phone.....	12
4.3 Use with stereo adapter and phone.....	13
4.4 Use with other Bluetooth Devices.....	13
(1) Install BTUSB01.....	13
(2) Start the Bluetooth Software.....	13
(3) Find Bluetooth Devices.....	13
(4) Start Pairing.....	14
(5) Start using Headset.....	15
5. FAQ.....	16
6. Specification.....	18
7. Compatible Mobile Phone List.....	19

# 1

## Before starting

1. For the first time using, it takes 4 hours to fully charge the batteries and 2 hours afterwards. After the batteries were fully charged, talking time is up to 8 hours and the standby time is up to 160 hours. For further information, please refer to the Battery Charging chapter in this manual.
2. The product configurations are based on Bluetooth stereo adapter and mobile phone. For other Bluetooth devices, please refer to the brand manuals.
3. When pairing with mobile phone or other Bluetooth devices, please select [CG-BTSHS01] for this headsets ID name and enter the passkey [1234] (for mobile phone) to start the Bluetooth connection.
4. "The Bluetooth Qualification of this product could be referred to Bluetooth Identifier B02152".

corega BTSHS01 is a Bluetooth 1.2 standard headset, with the included Bluetooth audio adapter, it can be used on any audio device which has a 3.5mm audio output, such as personal stereo, TV, DVD player, MP3 player and iPod etc..

This headset is also compatible with Bluetooth mobile phones. It supports auto music/phone switching function, so you will not miss out any phone call while you are listening music. The simple black-white design of CG-BTSHS01, is ideal for not only people who want to enjoy the freedom of wireless, but also seek for high quality of stereo sound.

## 2.1 Features

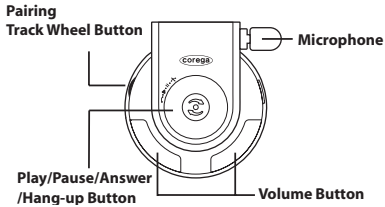
- Bluetooth 1.2 Standard
- Compatible with any 3.5mm audio port devices
- Easy carrying foldable ear-hook design
- Noise suppression, echo elimination and duplex sound for clearer quality calls
- Up to 8 hrs talk time and 160 hrs stand-by time
  - (\* Various usage patterns may adversely affect battery performance)
- USB charger included, can recharge through computer USB port
- Up to 10m operating range
  - (\* Environmental factors may adversely affect wireless signal range)
- Auto switching between phone / music mode

## 2.2 Package Contents

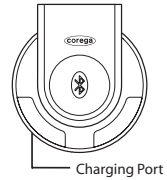
- Bluetooth Stereo Headset
- Bluetooth Stereo Adapter
- Charger
- USB Charger
- AV cable
- T-Connector
- Rubber Band
- Cloth bag
- Manual

## 2.3 Hardware Description

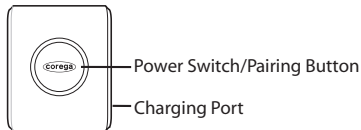
[Right]



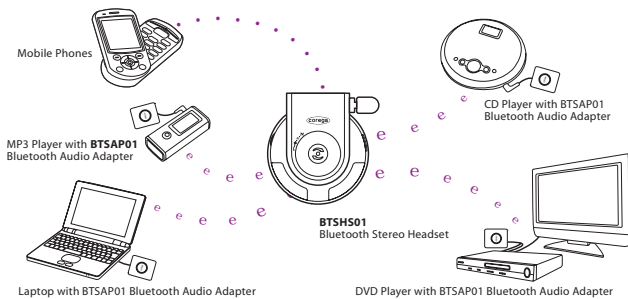
[Left]



[Front view]



## 2.4 Product Configuration



## 2.5 LED Description

X:OFF ★:BLINKING O:ON

LED	LED1: RED	LED2: BLUE
Power On	X	★
Standby	X	★
Pairing	★	★
Pairing Successfully	X	★
Working	X	★
Incoming Call	X	★
Talking	X	★
Low Battery	X	X
Charging	O	X
Charged Done	X	X

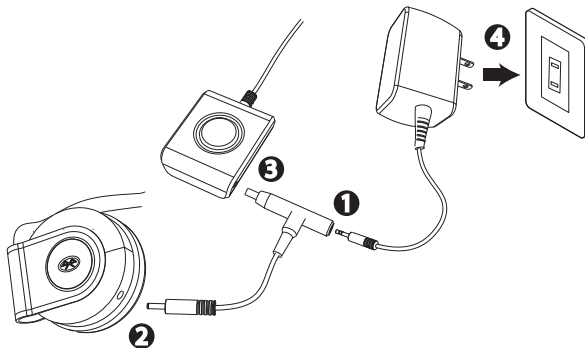
### 3

## Charging Batteries

For the first time using, it takes 4 hours to fully charge the batteries and 2 hours afterwards. After the batteries were fully charged, talking time is up to 8 hours and the standby time is up to 160 hours.

(\* Various usage patterns may adversely affect battery performance)

The following figure is the Battery Charging instructions:



1. Connect the T-Connector to the power adapter
2. Connect the stereo headset to the T-Connector
3. Connect the stereo adapter to the T-Connector
4. Plug the power adapter into an electrical outlet.

When start charging, the RED LED is steady on. Until the batteries are fully charged, RED LED is then off and power adapter should be unplugged and removed from electrical outlet.

\*Note: Alternatively, both devices can be charged through USB port by using USB charger provided.



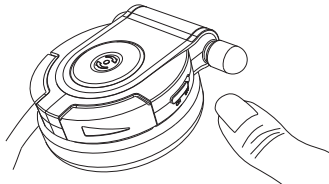
The followings are pairing modes and sequences for the stereo headset:

- 4.1 Headset ---> Stereo adapter (Pairing --->)
- 4.2 Headset ---> Mobile phone
- 4.3 Headset ---> Stereo adapter then Headset ---> Mobile phone
- 4.4 Headset ---> Other Bluetooth devices

## 4.1 Use with audio devices

### (1) Power On

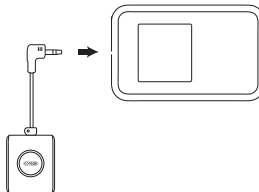
Use the power switch to turn on the power.



\*Note: Turn the switch to [OFF] to switch off the headset.

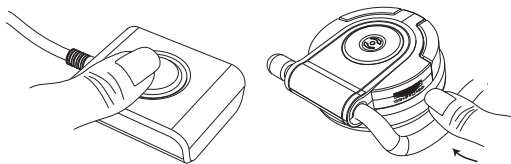
### (2) 3.5mm audio connector

Plug the audio connector into the 3.5mm audio port of the audio device.



\*Note: To use headset with DVD, TV or Hi-Fi system etc., please use the provided AV cable in the package.

### (3) Pairing



- a. When Power is On, press and hold the pairing track wheel on the stereo headset until the blue and red LEDs flash alternatively.
- b. When Power is Off, press and hold the control button on the stereo adapter until the blue and red LEDs flash alternatively.
- c. When both headset and stereo adapter's Blue LEDs start to flash three times, then the pairing is completed.

**\*Note:**

1. If pairing is unsuccessful, the stereo adapter has to be switched off then repeat the step a and b until the pairing is successful.
2. One headset can only be paired with one stereo adapter each time.
3. If either the headset or adapter is switch off and switch back on again, there is no need to repairing. Please press once on the round control button of headset or stereo adapter to back on bluetooth connection status.
4. To turn off the stereo adapter, press and hold the round button until RED LED is blinking.

### (4) Wearing Headset

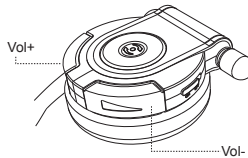
Hold both sides of the headset ► Hook the headset from the back of head ► Gently adjust headset position



## (5) Adjusting Volume

### 1. Adjusting Headset Volume

Press [Vol.+] to increase the volume, [Vol.-] to decrease the volume.

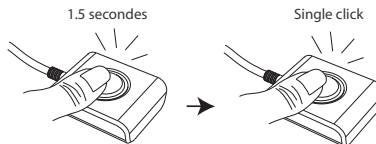


\*Note: It is recommended to adjust headset volume once the pairing is completed, since default volume may be slightly quiet.

### 2. Set volume mode

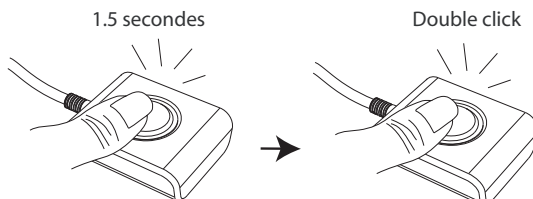
《Normal volume mode》

- When power is on, press and hold the control buttons on the stereo adapter for 1.5 seconds to disconnect the stereo adapter from the audio device. Then you will hear a 'DoDo' sound from the headset.
- Single click on the control button will reconnect the stereo adapter to the audio device and set the stereo headset to normal volume mode.



### 《High volume mode》

- When power is on, press and hold the control buttons on the stereo adapter for 1.5 seconds to disconnect the stereo adapter from the audio device. Then you will hear a 'DoDo' sound from the headset.
- Double click on the control button will reconnect the stereo adapter to the audio device and set the stereo headset to high volume mode.



\*Note:

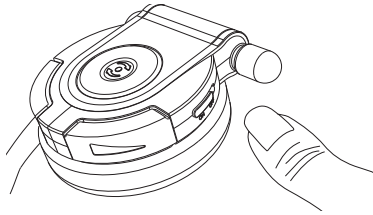
- For iPod, normal mode is preferred.
- For Sony PSP or Creative MP3 player and others, high volume mode is preferred.

## 4.2 Use with mobile phone

Before start pairing, please have mobile phone manual in hand and read through the pairing chapter. Moreover, please refer to the compatible mobile phone table in the last page to ensure your mobile phone is compatible.

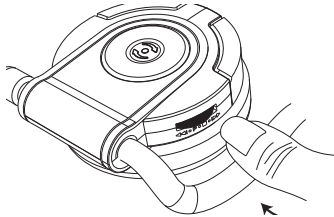
### (1) Bluetooth Headset/Switch on Mobile Phone

- a. Switch on your Bluetooth mobile phone
- b. Use the power switch to turn on the headset power



## (2) Pairing

- a. Press and hold the pairing/track wheel button on the stereo headset until blue and red LEDs are flashing.
- b. To properly perform pairing procedure on your mobile phone, please refer to the manual of your mobile phone for its own pairing instruction. This device name is set to be [CG-BTSHS01]. If you are asked to enter pin-code during pairing, please enter [1234].



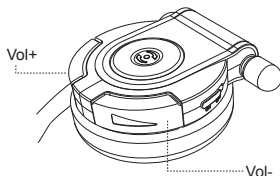
### \*Note:

1. If the pairing is unsuccessful, the BLUE LED is then flashing. Please repeat the step a and b until the pairing is completed.
2. One headset can only be paired with one bluetooth mobile phone each time.
3. If the headset is switch off and switch back on again, there is no need to repairing. Please press once on the round control button of headset or reconnect bluetooth connection from mobile phone to back on bluetooth connection status.

### (3) Adjusting Volume

#### 《Adjusting Headset Volume》

Press [Vol.+] to increase the volume, [Vol.-] to decrease the volume.



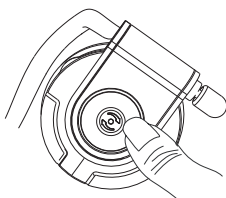
### (4) Starts Headset phone

#### 《Make a call》

- Dial out the number from your mobile phone.
- Voice is automatically transferred to the headset.

#### 《Receive a call/End a call》

- When there is an incoming call, a 'DoDo' sound is appeared from headset. Press the answer button to answer the call and the audio channel will be switched to the mobile phone.
- When finish talking, press the answer button to end the call and the audio channel will be switched back to the audio device.



\*Note: Press the answer button after the DoDo sound

### 《Reject a call》

- Press and hold the Vol- button of the headset for around 3 seconds.  
(This function may not work on some Bluetooth mobile phones)

## 4.3 Use with stereo adapter and phone

The pairing sequence is:

1. Headset with Stereo Adapter
2. Headset with Bluetooth mobile phone

## 4.4 Use with other Bluetooth Devices

This headset can also connect with other Bluetooth devices, such as USB Bluetooth dongle, Bluetooth PDA etc.. For the detail configuration, please refer to the device manual.

In the following, we use corega BTUSB01 USB Bluetooth dongle for configuration example:

### (1) Install BTUSB01

Plug BTUSB01 in USB port and install BTUSB01 driver and Bluetooth utility 4.0. (For the latest driver, please visit [www.corega-asia.com](http://www.corega-asia.com))

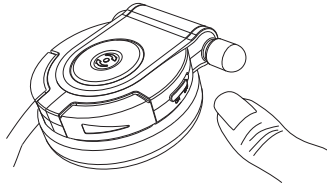
### (2) Start the Bluetooth Software

Double clicks [My Bluetooth Places] on the desktop



### (3) Find Bluetooth Devices

Click [Find Bluetooth Devices], and switch on headset power. The new detected device is then shown in the window in few seconds

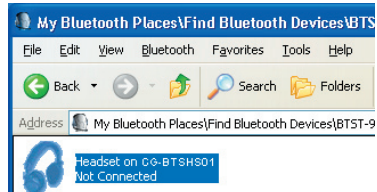
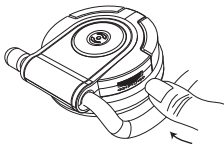


#### (4) Start pairing

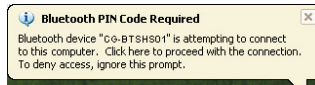
a. Double clicks on the icon, like the figure shown below



b. Press and hold the black track wheel button on the headset until RED and BLUE LEDs are flashing alternatively. Double clicks on the icon below:

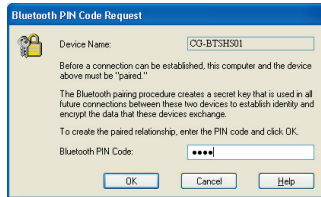


c. Then a message box is pop up from right bottom corner, please click on the message box.





- d. When the password request box is shown, please enter the password [1234]. Then the pairing is completed.



- \*Note: If the pairing is unsuccessful, the BLUE LED is then flashing. Please repeat the step 3 and 4 until the pairing is completed.

## (5) Start using headset

### 《Adjusting Headset Volume》

Before start using the headset, please adjust the headset volume first. For the detail, please refer to 4.1 (5).

- \* Addition feature: Forward/Backward music track



The Bluetooth stereo adapter provided doesn't support this function. To use this function, the bluetooth dongles/devices have to have or use:

1. A2DP and AVRCP profiles.
2. Window Media Player as default music player

- \*Note: This function is operatable in the corega BTUSB01 with the latest driver (v.4.0). (Please visit [www.corega-asia.com](http://www.corega-asia.com))

1. Can I change Bluetooth passkey?

No, the Bluetooth is written into the device when it manufactured and cannot be changed.

2. Can I use stereo headset with audio device and mobile phone at same time?

Yes, the stereo headset can be used with audio device and mobile phone at same time. However, there could be some compatibility issues on certain brands of models of mobile phones.

3. Can I use stereo headset while it is in charging mode?

No, the stereo headset cannot be used while it is in charging mode.

4. What is the operating range of the Headset?

The operating range of the Headset is up to 10 meters.

(\* Environmental factors may adversely affect wireless signal range)

5. Do I need to pair the stereo headset with my mobile phone and Bluetooth stereo adapter every time I use it?

You need to pair the stereo headset with your mobile phone and Bluetooth stereo adapter when first time using it. You only need to reconnect the stereo headset with your mobile phone and Bluetooth stereo adapter afterward. (See \*Note in 4.1 and 4.2)

6. How come the track control does not work with my MP3 player?

The Stereo Adapter in this package does not support this function, but other Bluetooth devices (such as corega BTUSB01) have following required components can activate the track control function.

1. Bluetooth devices and utilities support A2DP and AVRCP profiles
2. Use Windows Media Player as default music player

7. Can I use the Stereo headset with mobile phone to listen to music?

If your mobile phone is Bluetooth enabled and supports stereo feature (A2DP), then you can use the stereo headset with your mobile phone to listen to music. However, most of Bluetooth enabled phones do not support such feature.

8. When my mobile phone was searching for the headset, why did several Bluetooth devices appear on my mobile phone?

The headset will appear as "CG-BTSHS01" on your mobile phone after having been found by your mobile phone.

9. Why doesn't the headset work suddenly?

- 1) The headset may have run out of battery. When it is in low battery, a red LED will start to flash.
- 2) When this happens, please restart your mobile phone. (It is not necessary to perform Pairing again.)

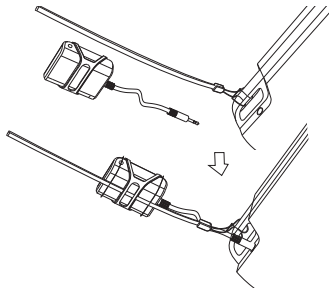
10. How to use the rubber band in the package?

The main purpose of rubber band is for fastening with other devices, such as MP3 hooker and Bluetooth devices. It can be used like the figures shown below:

1. Fasten with Bluetooth stereo adapter



2. Fasten with MP3 hooker



\*Note: If you have any further question, please contact our customer service , [service@corega.com.tw](mailto:service@corega.com.tw)

## 6

## Specification

Standard	Bluetooth 1.2
Bluetooth Profile	Headset:A2DP, HSP, HFP, AVRCP <b>Stereo Adapter:A2DP</b>
Frequency	2.4GHz~2.4835GHz ISM Band
RF Output Power	0 dBm(typical)
Receiving Sensitivity	-80 dBm(typical)
Cover Range	Up to 10M (open space) * Environmental factors may adversely affect wireless signal range
Spectrum	FHSS (Frequency Hopping Spread Spectrum)
Security	Pairing, 128bits Encryption Authentication
Usage Time	Talk time: 8 hours Standby time: 160 hours * Various usage patterns may adversely affect battery performance
Power Class	Class 2
Signal/Noise Distortion	<-91 dB
Antenna Type	Chip Antenna
Volume Range	-24 dB ~21.5 dB
Power Requirements	DC 5V± 5%
Battery Rechargeable	230mAh Li-Polymer Battery
<b>Environment Requirements</b>	
Operating	Temperature:-25~75 °C Humidity:<90% (non- non-condensing)
Storage	Temptemperature:-30~95 °C Humidity:<90% (non- non-condensing)
<b>Physical Specifications</b>	
Dimension	Headset 102(W) x 57.5(D) x 69.5(H) mm Adapter 34.5(W) x 14.5(D) x 44(H) mm
Weight	Headset 76.4 g (main unit) Adapter 18.8 g (main unit)

## 7

## Compatible Phone List

BTSHS01 User Manual

## Compatible Mobile Phone List

Brand	Model								
Nokia	3650	6230	6310i	7280	7610	N-Gage			
Motorola	E398	V501	V525	V600	V80				
Sony Ericsson	K700i	S700i	T610	T616	T618	T630	T637	Z600	P900

Brand	Model				Brand	Model	
Panasonic	X700				Simens	S55	SX1
Dopod	565	585	700i	818			

\*For the latest information of compatible mobile phones, please visit [www.corega-asia.com](http://www.corega-asia.com) or [www.corega.com.tw](http://www.corega.com.tw)









## Free Manuals Download Website

<http://myh66.com>

<http://usermanuals.us>

<http://www.somanuals.com>

<http://www.4manuals.cc>

<http://www.manual-lib.com>

<http://www.404manual.com>

<http://www.luxmanual.com>

<http://aubethermostatmanual.com>

Golf course search by state

<http://golfingnear.com>

Email search by domain

<http://emailbydomain.com>

Auto manuals search

<http://auto.somanuals.com>

TV manuals search

<http://tv.somanuals.com>