



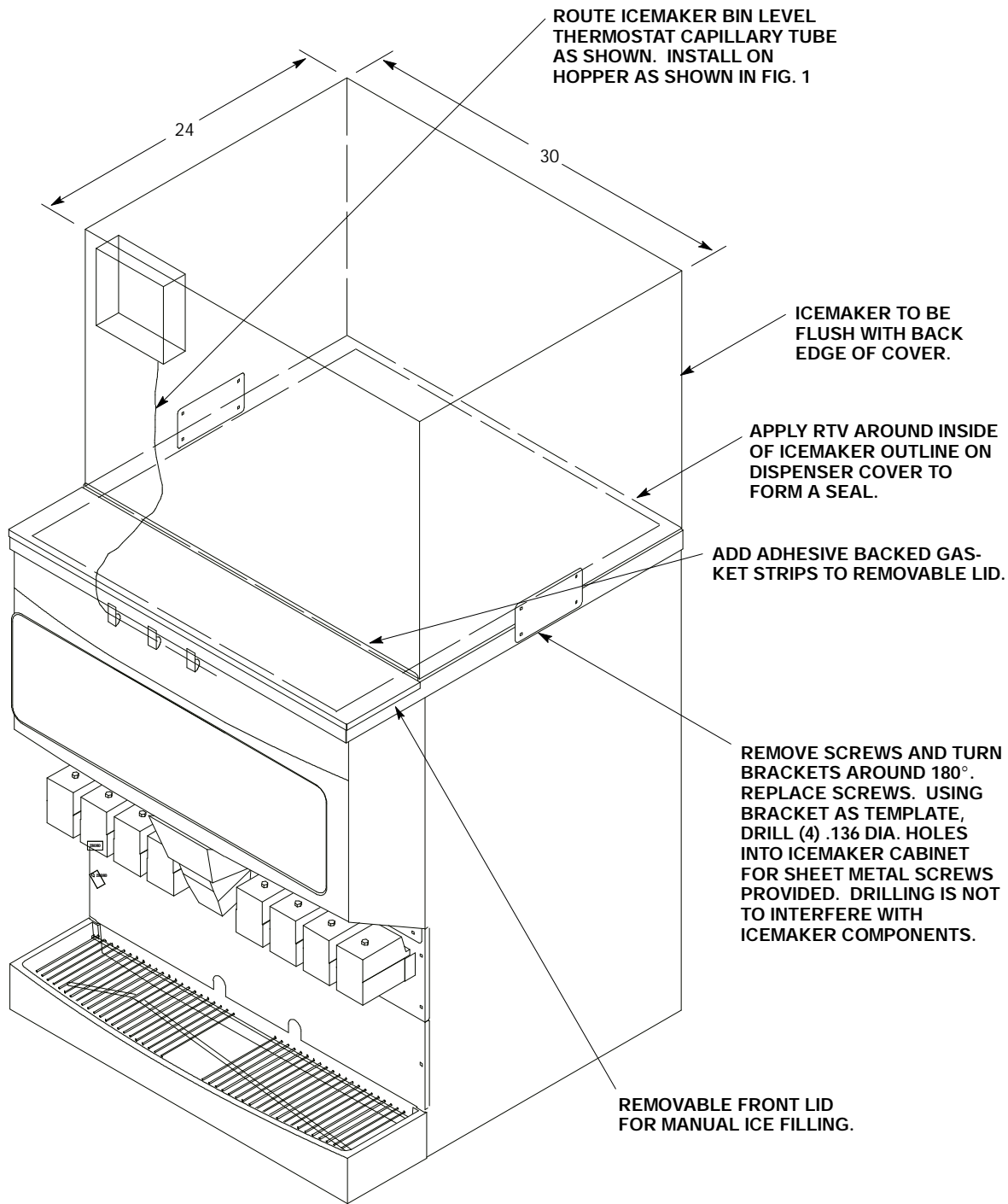
IMI CORNELIUS INC.
One Cornelius Place
Anoka, MN 55303-6234
Telephone (800) 238-3600
Facsimile (612) 422-3246

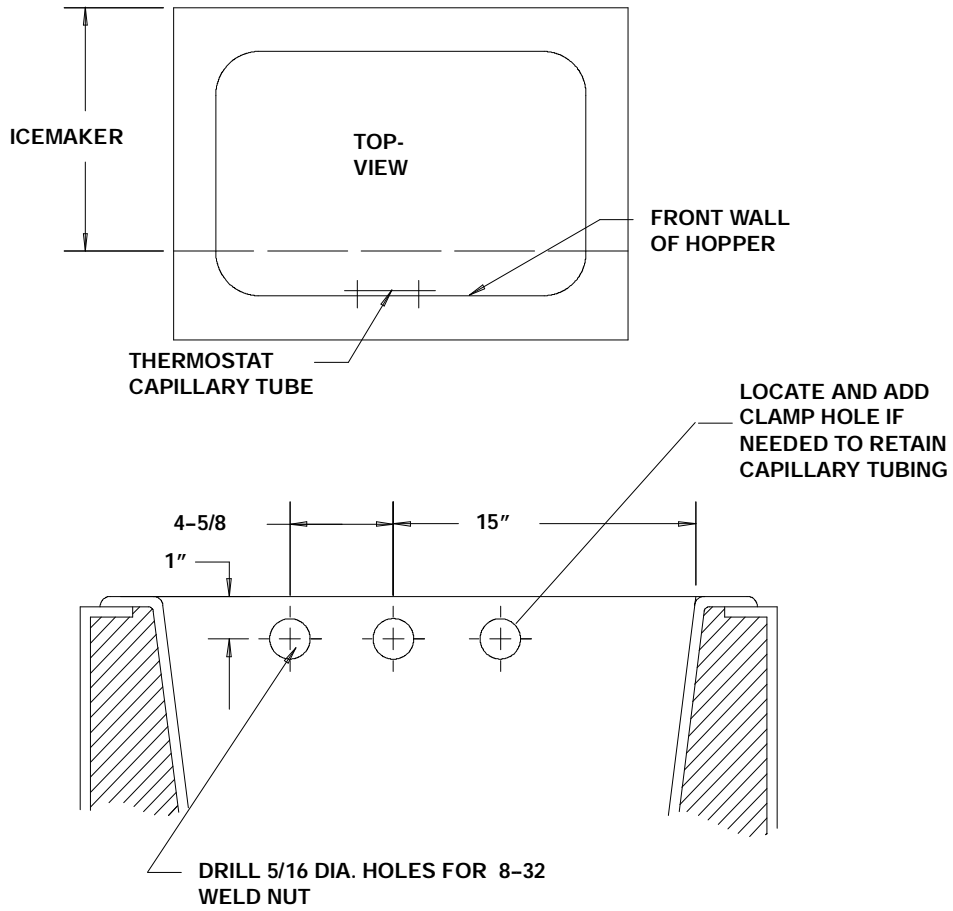
INSTALLATION INSTRUCTIONS

KIT, P/N 2306

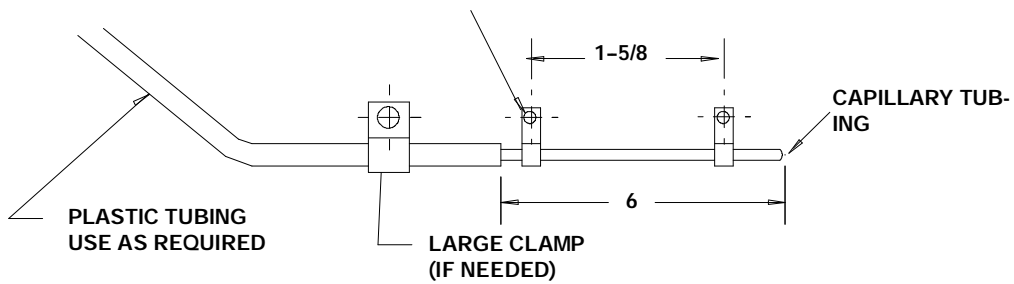
For installing Scotsman Model CM450, 500, & 650 Series Ice Makers on Remcor™ Model DB200 Series Ice/Drink dispenser.

1. Bin Level Control
 - A. Locate and drill three (3) 5/16" diameter holes (Ref. Fig. 1).
 - B. Install mounting clamps.
2. Seal ice maker to top of Dispenser as follows:
 - A. Run a bead of RTV on the dispenser cover around the outline of the ice maker and inside edge of cover opening.
 - B. Set ice maker onto cover and install bin level thermostat capillary tube in clamps and tighten screws (Ref. Fig 1). Position ice maker as shown.
 - C. Wipe away excess RTV.
3. Secure ice maker to Dispenser with mounting brackets as show. Drill holes and install sheet metal screws provided into ice maker cabinet and dispenser cover. Screws must not interfere with ice maker components.
4. Install adhesive backed gasket strip to removable lid, and install with screw provided.
5. Follow the manufacturer's instructions to complete the installation of the ice maker. Bin level thermostat capillary tube must not interfere with agitator.





INSERT 8-32 WELL NUTS INTO 5/16 DIA. HOLES, TIGHTENING SCREWS WILL SECURE



BIN LEVEL THERMOSTAT CAPILLARY TUBING ASSEMBLY

Free Manuals Download Website

<http://myh66.com>

<http://usermanuals.us>

<http://www.somanuals.com>

<http://www.4manuals.cc>

<http://www.manual-lib.com>

<http://www.404manual.com>

<http://www.luxmanual.com>

<http://aubethermostatmanual.com>

Golf course search by state

<http://golfingnear.com>

Email search by domain

<http://emailbydomain.com>

Auto manuals search

<http://auto.somanuals.com>

TV manuals search

<http://tv.somanuals.com>