

**CRAIG®**

**2GB DIGITAL MP3/  
PERSONAL VIDEO PLAYER WITH  
1.5 INCH (3.81cm) COLOR DISPLAY**

*Owner's Manual*

PLEASE READ BEFORE OPERATING THIS EQUIPMENT.

**Model: CMP622E**

Download from [www.Somanuals.com](http://www.Somanuals.com). All Manuals Search And Download.

# Important Safety Instruction

Before using the unit, be sure to read all operating instructions carefully. Please note that these are general precautions and may not pertain to your unit. For example, this unit may not have the capability to be connected to an outdoor antenna.

- 1) Read these instructions.  
All the safety and operating instructions should be read before the product is operated.
- 2) Keep these instructions.  
The safety and operating instructions should be retained for future reference.
- 3) Heed all warnings.  
All warnings on the product and in the operating instructions should be adhered to.
- 4) Follow all instructions.  
All operating and use instructions should be followed.
- 5) Do not use this apparatus near water.  
Do not use this product near water and moisture, for example : near a bathtub, washbowl, kitchen sink or laundry tub; in a wet basement; or near a swimming pool.
- 6) Clean only with dry cloth.  
Unplug this product from the wall outlet before cleaning. Do not use liquid cleaners or aerosol cleaners. Use a dry cloth for cleaning.
- 7) Do not block any ventilation openings.  
Install in accordance with the manufacturer's instructions.  
Slots and openings in the cabinet and in the back or bottom are provided for ventilation, to ensure reliable operation of the product and to protect it from overheating. These openings must not be blocked or covered. The openings should never be blocked by placing the product on a bed, sofa, rug or other similar surface. This product should never be placed near or over a radiator or

heat source. This product should not be placed in a built-in installation such as a bookcase or rack unless proper ventilation is provided or the manufacturer's instructions have been adhered to.

- 8) Do not install near any heat sources such as radiators, heat registers, stoves, or other apparatus (including amplifiers) that produce heat.
- 9) Do not defeat the safety purpose of the polarized or grounding-type plug. A polarized plug has two blades with one wider than the other. A grounding type plug has two blades and a third grounding prong. The wide blade or the third prong are provided for your safety. If the provided plug does not fit into your outlet, consult an electrician for replacement of the obsolete outlet.
- 10) Protect the power cord from being walked on or pinched particularly at plugs, convenience receptacles, and the point where they exit from the apparatus.
- 11) Only use attachments/accessories specified by the manufacturer.
- 12) Use only with the cart, stand, tripod, bracket, or table specified by the manufacturer, or sold with the apparatus. When a cart is used, use caution when moving the cart/apparatus combination to avoid injury from tip-over.

An appliance and cart combination should be moved with care. Quick Stops, excessive force and uneven surfaces may cause the appliance and cart combination to overturn.

PORTABLE CART WARNING  
(symbol provided by IRETAC)



03126A

# Important Safety Instruction

- 13) Unplug this apparatus during lightning storms or when unused for long periods of time.

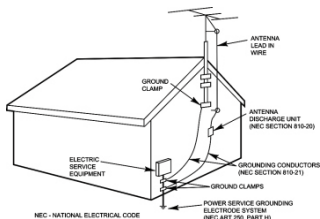
To protect your product from a lightning storm, or when it is left unattended and unused for long periods of time, unplug it from the wall outlet and disconnect the antenna or cable system. This will prevent damage to the product due to lighting and power-line surges.

- 14) Refer all servicing to qualified service personnel. Servicing is required when the apparatus has been damaged in any way, such as power-supply cord or plug is damaged, liquid has been spilled or objects have fallen into the apparatus, the apparatus has been exposed to rain or moisture does not operate normally, or has been dropped.
- 15) Power source  
This product should be operated only from the type of power source indicated on the marking label. If you are not sure of the type of power supply to your home, consult your appliance dealer or local power company. For products intended to operate from battery power, or other source, refer to the operation instructions.
- 16) Power lines  
An outside antenna system should not be located in the vicinity of overhead power lines or other electric light or power circuits, or where it can fall into such power lines or circuits. When installing an outside antenna system, extreme care should be taken to keep from touching such power line or circuits as contact with them might be fatal.

- 17) Overloading  
Do not overload wall outlets and extension cords as this can result in a risk of fire or electric shock.

- 18) Object and liquid entry  
Never push objects of any kind into this product through openings as they may touch dangerous voltage points or short out parts that could result in fire or electric shock. Never spill or spray any type of liquid on the product.

- 19) Outdoor antenna grounding  
If an outside antenna is connected to the product, be sure the antenna system is grounded so as to provide some protection against voltage surges and built up static charges. Section 810 of the National Electric Code ANSI/NFPA 70 provides information with respect to proper to grounding of the mast and supporting structure, grounding of the lead-in wire to an antenna discharge product, size of grounding conductors, location of antenna discharge product, connection to grounding electrodes and requirements for the grounding electrodes.



S2898A

# Important Safety Instruction

- 20) **Service**  
Do not attempt to service this product yourself as opening or removing covers may expose you to dangerous voltage or other hazards. Refer all servicing to qualified service personnel.
- 21) **Replacement parts**  
When replacement parts are required, be sure the service technician uses replacement parts specified by the manufacturer or those that have the same characteristics as the original parts. Unauthorized substitutions may result in fire or electric shock or other hazards.
- 22) **Safety check**  
Upon completion of any service or repairs to this product, ask the service technician to perform safety checks to determine that the product is in proper operation condition.
- 23) **Wall or ceiling mounting**  
The product should be mounted to a wall or ceiling only as recommended by the manufacturer.
- 24) **Damage requiring service**  
Unplug this product from the wall outlet and refer service to qualified service personnel under the following conditions.
  - a) When the power-supply cord or plug is damaged.
  - b) If liquid has been spilled or objects have fallen into the product.
  - c) If the product has been exposed to rain or water
- d) **If the product does not operate normally by following the operating instructions.** Adjust only those controls that are covered by the operating instructions, as an adjustment of other controls may result in damage and will and require extensive work by a qualified technician to restore in the product to its normal operation
- e) **If the product has been dropped or the cabinet has been damaged.**
- f) **When the product exhibits a distinct change in performance-this indicates a need for service.**
- 25) **Note to CATV system installer**  
This reminder is provided to call the CATV system installer's attention to Article 820-40 of the NEC that provides guidelines for proper grounding and, in particular, specifies that the cable ground shall be connected to the grounding system of the building, as close to the point of cable entry as practical.

# PRECAUTIONS

## COPYRIGHT

Distributing copies of audio or video tracks without permission is a violation of international copyright laws.

## SAFETY:

- Vibration experienced during walking or exercising will not affect the player. However, dropping the player or dropping a heavy object on the player may result in damage or sound distortion.
- Avoid spilling any liquid onto or into the player.
- Do not leave the player in a location near heat sources; in a location subject to direct sunlight, excessive dust, sand, moisture, rain or mechanical shock; on an unlevel surface; or in a car with the windows closed during periods of excessive heat.

## ROAD SAFETY:

Do not use headphones while driving, cycling or operating any motorized vehicle. It may create a traffic hazard and it is illegal in some areas. It can be potentially dangerous to play your headset at a high volume while walking, especially at pedestrian crossing. You should exercise extreme caution or discontinue use in potentially hazardous situations.

## FCC WARNING:

This equipment has been tested and found to comply with the limits for a Class B digital device, pursuant to Part 15 of the FCC Rules. These limits are designed to provide reasonable protection against harmful interference in a residential installation. This equipment generates, uses and can radiate radio frequency energy and, if not installed and used in accordance with the instructions, may cause harmful interference to radio communications. However, there is no guarantee that interference will not occur in a particular installation. If this equipment does cause harmful interference to radio or television reception, which can be determined by turning the equipment off and on, the user is encouraged to try to correct the interference by one or more of the following measures:

- Reorient or relocate the receiving antenna.
- Increase the separation between the equipment and receiver.
- Connect the equipment into an outlet on a circuit different from that to which the receiver is connected.
- Consult the dealer or an experienced radio/TV technician for help.

This device complies with Part 15 of the FCC Rules. Operation is subject to the following two conditions:

- This device may not cause harmful interference, and
- This device must accept any interference received, including interference that may cause undesired operation.

Modification not authorized by the manufacturer may void user's authority to operate this device.

Dear Customer:

Selecting fine audio equipment such as the unit you've just purchased is only the start of your musical enjoyment. Now it's time to consider how you can maximize the fun and excitement your equipment offers. This manufacturer and the Electronic Industries Association's Consumer Electronics Group want you to get the most out of your equipment by playing it at a safe level. One that lets the sound come through loud and clear without annoying blaring or distortion and, most importantly, without affecting your sensitive hearing.

Sound can be deceiving. Over time your hearing "comfort level" adapts to higher volumes of sound. So what sounds "normal" can actually be loud and harmful to your hearing. Guard against this by setting your equipment at a safe level BEFORE your hearing adapts.

To establish a safe level:

- Start your volume control at a low setting.
- Slowly increases the sound until you can hear it comfortably and clearly, and without distortion.

Once you have established a comfortable sound level:

- Set the dial and leave it there.

Taking a minute to do this now will help to prevent hearing damage or loss in the future. After all, we want you listening for lifetime.

We Want You Listening For A Lifetime:

Use wisely, your new sound equipment will provide a lifetime of fun and enjoyment. Since hearing damage from loud noise is often undetectable until it is too late, this manufacturer and the Electronic Industries Association's Consumer Electronic Group recommend you avoid prolonged exposure to excessive noise. This list of sound levels is included for your protection.

## Decibel

Level	Example
30	Quiet library, soft whispers
40	Living room, refrigerators, bedroom away from traffic
50	Light traffic, normal conversation, quiet office
60	Air conditioner at 20 feet, sewing machine
70	Vacuum cleaner, hair dryer, noisy restaurant
80	Average city traffic, garbage disposals, alarm clock at two feet

### THE FOLLOWING NOISES CAN BE DANGEROUS UNDER CONSTANT EXPOSURE:

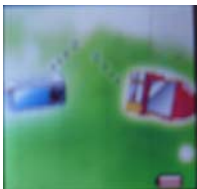
90	Subway, motorcycle, truck traffic, lawn mower
100	Garbage truck, chain saw, pneumatic drill
120	Rock band concert in front of speakers, thunderclap
140	Gunshot blast, jet engine
180	Rocket launching pad

Information courtesy of the Deafness Research Foundation.



# Battery Recharge

The player had a build-in DC 3.7V, 250mA Lithium battery. Recharging the battery as:  
Power ON the player by slide the POWER switch to ON position.  
Connect the player to the computer by the supplied USB connection cable.  
The display on the unit will shows as below and will start to charging automatically:



## NOTE:

- 1) For the first time to recharge the build-in battery, charge it at least 10 hours.  
For normal recharge, it need approximate 4 hours.
- 2) When the POWER Switch is on the OFF position, the player can't be charge.

# TRANSFERRING FILES

Before you getting start to playback music, videos or photos, you should transfer those files into the player as:

**Download the normal music, videos and photos files into the player:**

The player has two Online Device modes: MEDIA DEVICE and USB Disk, for normal



files transferring, set the player in USB DISK mode as:

1. Power on the player by slide the POWER Switch to ON position, the setting manual (FIG. 1) will appear on the display automatically.



FIG.1



FIG.2

2. Press the >>| or |<< button to select SETUP then press MENU button to enter.
3. Press >>| or |<< button to select Online Device (FIG. 2) then press MENU Button to enter.
4. Press >>| or |<< button to select USB Disk, press MENU Button to confirmed the selection then press and hold the MENU button to save the setting and exit.
5. After above setting, connect the player to the computer by the supplied USB connection cable.
6. Download the specific files into the player as download the files to others portable device.
7. After downloaded, disconnect the unit from computer.

#### NOTES:

- ~ All the downloaded files in this setting will stored in the Root Directory in the player.
- ~ For video files, only AMV video files (with .amv extension) can be playback by the player. For details, please refer to the AMV converter section.

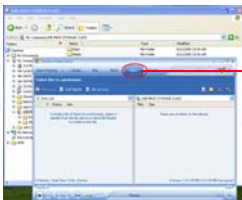
#### **Download the DRM-WMA (Digital Rights Management-WMA, songs with copy right protective in WMA format) files into the player:**

1. Set the Online Device modes to MEDIA DEVICE as above procedures.
2. Connect the player to the computer with the supplied USB connection cable. The Download from [www.Somanuals.com](http://www.Somanuals.com). All Manuals Search And Download.

computer will detected the player and show:



3. Select and turn on the Windows Media Player in the computer and double click the SYNC button on the menu bar.



SYNC button

4. Drag the specific DRM songs into the sync list .
5. Double click the Start Sync button on the Windows Media Player to start synchronize the DRM songs into the player.
6. When finished, disconnect the player from the computer. (The operation procedures and the location of control buttons between Windows Media Player 10 and 11 are difference. For details, please refer to the instruction manual of Windows Media Player. )
7. In this setting, the DRM songs will stored in the Music Folder in the player.

#### **IMPORTANT NOTE:**

1. The DRM songs only can sync (synchronize) into the player through the Windows Media Player 10 or 11.

2. Only the Window XP and Vista or latest operation system of computer can installed the Windows Media Player 10 or 11.
3. Do NOT disconnect the player during files transferring. Otherwise, the DRM information in the unit may corrupt, you cannot playback the DRM songs again. In this case, you should deleted all the DRM songs and information in the unit as:
  - 3.1 Connect the player to the computer, delete all **the files/folders in the player**.
  - 3.2 Disconnect the player from the computer.
  - 3.3 Power on the unit, enter to the setting menu. Press >>| or |<< button to select Remove MTPinfo then press menu button to delete all the **internal** information of DRM in the player .
  - 3.4 Connect the player to the computer and sync the DRM songs into the player again.

## Operation system of the computer:

1. Windows Vista and XP: The player can perform all functions.
2. Windows ME and 2000、Mac OS 10、Linux 2.4.2: The normal music, videos or photos files can be download into the player.
3. Windows 98: Before download the normal music, videos or photos files into the player, the drive in the enclosed CD disc should be installed to the computer.

### Install drive-program at the system of WIN 98

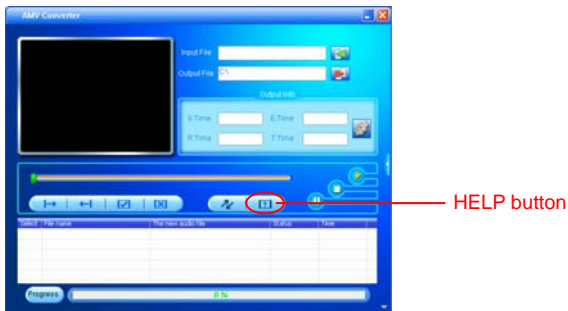
1. Insert the supplied installation CD into the CD Drive in your computer; the List of Folders in the CD will appear on the computer's screen automatically.
2. Selected the **"WIN 98 SE DRIVER"** and enter.
3. Selected and double click "setup.exe" and follow the on-screen instructions to install the software.

### Install AMV Converter and Player in the computer

1. Insert the supplied installation CD into the CD Drive in your computer; the List of Folders in the CD will appear on the computer's screen automatically.
2. Selected the **"MP3 set 4\_16"** and enter.
3. Selected and double click "setup.exe" and follow the on-screen instructions to install the software.

## AMV Converter

After the installation of the AMV Converter, click "START" on your computer, click "All Programs", selected and double click "**MP3 Player Utilities 4.16**" to enter. Then selected and double click "AMV Converter" to run the converter. The follows window will appear on the computer's screen:



### NOTE:

Before using this converter, press the HELP button on the AMV Converter to read the detail Instruction Manual of the Converter.

Some video titles have built in protection software that, copying is prohibited. Only unprotected video contents of the above formats are possible be converted by the AMV converter.

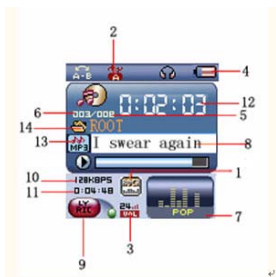
There are some video files that may be suing the compatible format's name, but actually are different formats, so that the AMV converter cannot handle.

# Locating the Controls



S/N	Description	S/N	Description
1	>    Button	6	▶▶ Button
2	MENU Button	7	MIC (Microphone)
3	USB Jack	8	◀◀ Button
4	VOL Button	9	LCD Display
5	Phones Jack	10	Power ON/OFF Switch

# Display Overview



S/N	Description	S/N	Description
1	EQ Mode	8	Current Song's Name
2	Repeat Mode	9	Lyric Indicator
3	Volume Level	10	Bitrate of current Track
4	Battery Meter	11	Total time of current Track
5	Total Numbers of Tracks	12	Elapsed Time of Current Track
6	Current Track Number	13	Format of Current Track
7	Real time Audio Spectrum	14	Current Folder's Name

## Battery Indicator



= Battery full power.



= Battery empty, connect the unit to the computer for recharging. It would take about 4 hours to fully recharge the battery. During charging, you can playback the music, videos or photos at the same time.

## Basic Operation

### 1. Power On/Off:

#### 1.1 Power On:

- Slide the Power ON/OFF Switch to ON position to power on the player.

#### 1.2 Power OFF/Standby:

- In power on or playback modes, press and hold the >|| Button to power off (Standby mode) the player. To power on the player again from the standby mode, press and hold the >|| Button again, or
- Slide the Power ON/OFF Switch to OFF position to power off the player.  
(NOTE: If long period of time will not use the player, recommended to power off the player by the Power ON/OFF switch.)

#### 1.3 Volume Control:

- In the playback mode, press the VOL button then press the >>| or |<< button to adjust the volume as desire.

#### 1.4 Phones Jack:

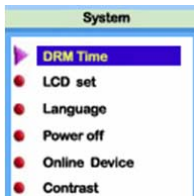
- Insert the included Earphone to the Phones Jack on the bottom of the player.

# Main Menu



1. When power on the player, the setting menu will appear on the display automatically.
2. In the others mode, press and hold the MENU button until the setting menu appear on the display.
3. In the setting menu (or sub-menus), press the >>| or |<< Buttons repeatedly to selected the specific functions, then press the MENU button to confirm the selections. After setting, press and hold the MENU button to return to the main menu or press the MENU button return to previously menu.
4. If MP3 is selected, press MENU button to enter Music Playback mode, press >|l button to start playback.
5. If AMV is selected, press MENU button to enter VIDEO Playback mode, press >|l button to start playback.
6. If RECORD is selected, press Menu button to enter Voice Recording Mode.
7. If VOICE is selected, press MENU button to enter Voice Recording Playback mode.
8. If PHOTO is selected, press MENU button to enter Photo Playback mode, press >|l button to start playback the photos.
9. If SETUP is selected, press MENU button to enter setting menu mode. In setting menu:





- 9.1 If LCD set is selected, press MENU button to enter the setting menu. Press the >>| or |<< button to select Black or Exit. If Black is selected, press MENU button to enter, press the >>| or |<< button to select the display auto turn off period to 0 (Display will not turn off); 6; 12; 18; 24; 30 (seconds), then press and hold the MENU button to save the setting and exit. If Exit is selected, press MENU button to return to the previous setting menu.
- 9.2 If Language is selected, press MENU button to enter, press the >>| or |<< button to select the On Screen Display language as desire, then press and hold the MENU button to save the setting and exit.
- 9.3 If Power off is selected, press MENU button to enter, press the >>| or |<< button to select Off Time or Sleep time. If Off time is select, press MENU button to enter, press the >>| or |<< button to set the auto power off time when the player is idle to 0 (The player will not auto power off); 10; 20; 30; 40; 50;60 (seconds), then press and hold the MENU button to save the setting and exit. If Sleep time is select, press the MENU button to enter to the setting menu, press >>| or |<< button to set the sleep time from to 0 (Sleep timer will not functioning); 10 to 120 (minutes), press and hold the MENU button to save the setting and exit.

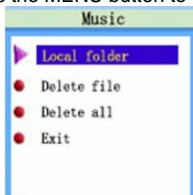
**NOTES:**

1. If Sleep timer had been set, the player will be auto power off when time is up.
  2. If the sleep timer had not be reset to "0", every time when you power on the player, it will auto power off when sleep time is up.
- 9.4 If Contrast is selected, press MENU button to enter the setting menu, press the >>| or |<< button to set the contrast level from 0-15 as desire, then press and

- hold the MENU button to save the setting and exit.
- 9.5 If Memory info. is selected, press MENU button to read the status of internal memory. Press and hold the MENU button to exit.
  - 9.6 If Firmware version is selected, press MENU button to read the information of the software inside the player. Press and hold the MENU button to exit.
  - 9.7 If Exit is selected, press the MENU button to exit.

## Listening Music

1. When power on the player, the setting menu will appear on the display and the icon of MP3 will be highlight automatically. (In the others mode, press the >>| or |<< Buttons repeatedly until icon of MP3 is highlight.)
2. Press the MENU button to enter MP3 mode.
3. Press the MENU button to enter the songs list mode. Display shows:



4. Press the >>| or |<< button to select Local folder; Delete file or Delete all then press the MENU button to enter:
  - 4.1 If Local folder is selected, press the >>| or |<< button to searching the specific songs in the folders. If the specific files was found, press the MENU button to confirmed, then press >|| button to start playback the selected song.
  - 4.2 If Deleted file is selected, the list of songs will appear on the display. Press the >>| or |<< button to select the song you want to delete, then press the MENU button. Press the >>| or |<< button to select YES or NO. If YES is selected, then press the MENU button to deleted the selected song and return to the pervious menu. Repeat the same procedures until all the specific songs were deleted. If No is selected, then press the MENU button to return to previous menu.

- 4.3 If Delete all is selected, press MENU button to enter, then press the >>| or |<< button to Select YES or NO. If YES is selected, then press the MENU button to delete all the songs in the player and exit. If NO is selected, press the MENU button to return to pervious menu.
5. To plays all the songs in the player once, press >|| button to start.
6. During playback, press >|| button to pause, press again to resume normal playback.
7. During playback, press the >>| or |<< button repeatedly to skip to the higher or lower numbers track.
8. During playback, press and hold the >>| or |<< button to fast searching the specific section.
9. During playback, press the MENU button to enter Music setting menu, press the >>| or |<< Buttons repeatedly to select Repeat; Equalizer; SRS mode; Tempo rate; Reply; Reply times; Replay gap or Exit as desire, then press MENU button again to confirmed the selection.



- 9.1 If Repeat is selected, press the >>| or |<< Buttons to select the setting and press the MENU button to save the setting and exit as:
 

Normal:	Plays all the tracks in the player one by one.
Repeat One:	Repeat to play the current track.
Folder:	Play the tracks in the current folder one by one and then stop.
Folder All:	Repeat playback the tracks in the current folder.
Repeat All:	Repeat to play all the tracks in the player.
Random:	Playback the tracks in the player randomly.
Intro:	Play the first 10 seconds of each tracks.
- 9.2 If Equalizer is selected, press the >>| or |<< button to select the preset sound mode to Natural; Rock; Pop; Classic Soft, Jazz; DBB (Super Bass) as desire then Download from [www.Somanuals.com](http://www.Somanuals.com). All Manuals Search And Download.

- press the MENU button to save the setting and exit.
- 9.3 If SRS mode is selected, press the >>| or |<< button to select the setting and press the MENU button to save the setting and exit as:  
SRS WOW: To turn ON the SRS (Surround) effect.  
User mode: To set the SRS effects as desire.  
Disable SRS: To turn OFF the SRS effect.
- 9.4 If Tempo is selected, press the >>| or |<< button to select tempo rate from -8 to +8 then press the MENU button to save the setting and exit. (Note: Tempo rate only operated in MP3 and Voice recording playback.)
- 9.5 If Replay is selected, press MENU button to activate A-B repeat mode. Press the >>| button to set the beginning of the specific section, press again to set the end of the specific section. The selected section will playback repeatedly until the >|| button is press. To resume normal playback, press the >|| button again.
- 9.6 If Replay times is selected, press the >>| or |<< button to set the repeat times of A-B repeat, press the MENU button to save the setting and exit.
- 9.7 If replay gap is selected, press the >>| or |<< button to set the pause time between the A-B repeats.

## Lyric Display

This player can supports “.LRC” lyric files. During playback, if the color of LYRIC indicator from red turn to green as the figure below, it means the lyric files is available. Press and hold the MENU button to read the lyric on the display. Press the MENU button again to return to normal display.

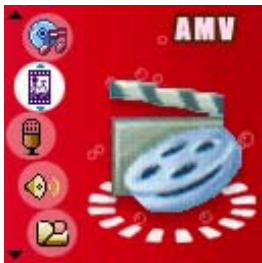


Lyric indicator

Download from [www.Somanuals.com](http://www.Somanuals.com). All Manuals Search And Download.

# Watching Movies

1. Power on the player, the setting menu will appear on the display.
2. Press the >>I or I<< button to select AMV then press MENU button to enter, the display will shows:



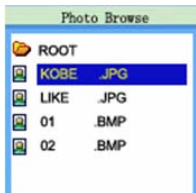
3. Press the >>I or I<< button repeatedly to searching the specific video tracks.
4. Press the >II button to start playback.
5. During playback, press >II button to pause, press again to resume normal playback.
6. During playback, press the >>I or I<< button repeatedly to skip to the higher or lower numbers track
7. During playback, press and hold the >>I or I<< button to fast searching the specific section.
8. To adjust volume, press and hold the MENU button to return to the menu. Press the VOL button, volume level will appear on the display, press the >>I or I << button to adjust volume as desire. Press >II button again to resume playback.
9. Press and hold the >II button or slide the power switch to off position to power off the player.

# Watching Photos

1. Power on the player, the setting menu will appear on the display.
2. Press the >>| or |<< button to select Photo, the display will show:



3. Press MENU button to enter, the list of photos will appear on the display.



4. Press >>| or |<< button repeatedly to select the photos as desire. Press the >|| button to start playback.  
Or, press the MENU button to enter photo setting manual, the display will show as :



- 4.1 Press the >>| or |<< button to select the functions then press MENU button to enter:
- 4.2 If Local folder is selected, press the >>| or |<< button to searching the specific files in difference the folders. If the specific files was found, press the MENU button to confirmed, then press >>| button to start playback the selected photos.
- 4.3 If Play set is selected, press the >>| or |<< button to select Manual play or Auto play (plays the photos in slide show mode).
  - ~ If Manual play is selected, press the MENU button to confirmed the selection, the player will plays the photos one by one when the >>| or |<< button is press.
  - ~ If Auto play is selected, press the MENU button to enter the setting mode, press the >>| or |<< button repeatedly to set the duration between photos. Press the MENU button to save the setting and exit. After setting, the player will plays the photos in slide show mode.
- 4.4 If the Deleted file is selected, the list of photos will appear on the display. Press the >>| or |<< button to select the picture you want to delete, then press the MENU button. Press the >>| or |<< button to select YES or NO. If YES is selected, then press the MENU button to deleted the selected photo and return to the pervious menu. Repeat the same procedure until all the specific photos were deleted. If No is selected, then press the MENU button to return to previous menu.
- 4.5 If Delete all is selected, press MENU button to enter, then press the >>| or |<< button to Select YES or NO. If YES is selected, then press the MENU button to delete all the photos in the player and exit. If NO is selected, press the MENU button to return to pervious menu.
- 4.6 If Exit is selected, press the MENU button to return to previous menu.

# Voice Recording

1. Power on the player, the setting menu will appear on the display.
2. Press the >>| or |<< button to select RECORD then press MENU button to enter. The display will show:



3. Press the menu button to enter the recording quality setting menu.
4. Press the >>| or |<< button to select REC type then press MENU button to enter.
5. Press the >>| or |<< button to select recording modes to Fine REC; Fine VOR as desire then press the MENU button to save the setting and exit.  
Fine REC: Fine quality recording in WAV format. (For find quality for recording, recommended set the recording in this setting)  
Fine VOR: Fine quality recording in WAV format. (In this setting, when the built-in microphone have not detected any input sounds during recording, the player will turn to pause mode automatically. When it detected the sounds again, the player will start to recording again.)
6. Press the >|| button to start recording. Speak into the microphone at a normal tone of voice.
7. During recording, press >|| button to pause recording, press again to resume recording.
8. Press and hold the MENU to save the recording and exit.



# Voice Recording Playback

1. Power on the player, the setting menu will appear on the display.
2. Press the >>| or |<< button to select VOICE then press MENU button to enter. The display will show:



3. Press the >>| or |<< button to select the specific recording tracks.
4. Press the >| button to start playback the specific voice recording track.
5. The others operations is same as music playback.

# TROUBLESHOOTING GUIDE

If you experience a problem with this unit, check the chart below before calling for service.

Player do not power on	<ul style="list-style-type: none"><li>● Check the ON/OFF switch. Slide the switch to ON position.</li><li>● Press and hold the ►II button until the LCD screen light on .</li></ul>
Music, Video, Photos can't be play	<ul style="list-style-type: none"><li>● Files not successfully transferred to the player. Connect the player to the computer using the provided USB cable, transfer files to the player again</li><li>● Files format not correct. Transfer MP3,WMA,AMV,JPEG,WAV files to the player only.</li></ul>
No sound output	<ul style="list-style-type: none"><li>● Earphone not connected. Connects the earphone plug completely into the player's earphone jack.</li><li>● Earphone may damage. Check and replace the earphone.</li><li>● Volume too low, adjust volume to higher level.</li><li>● Files may damaged or in wrong formats. Try other files.</li></ul>
Sound quality is bad	<ul style="list-style-type: none"><li>● Music file is corrupted. Try other files.</li><li>● Battery level low, recharge the unit.</li><li>● Earphone damaged, replace a new earphone.</li></ul>
Computer does not detect the player/Download failure	<ul style="list-style-type: none"><li>● Read the supported Operation System of computer on page 10.</li><li>● USB cable not secured, connects USB cable properly.</li></ul>
Voice recording sound quality is bad	<ul style="list-style-type: none"><li>● Point the built in mic to the sound source, no barriers between the mic and the sound source.</li></ul>

# Specification

Dimension	2.2(W) x 2.8(H) x 0.4(D) inches	
Weight	1.65 oz	
PC connection	USB 2.0 (Fast Speed)	
Flash memory	2G (Due to some of memory was used for internal operation, only approx 1.87 GB memory are free for download.)	
Battery	3.7V 250mA	
	Max Play time: Up to 4 hours	
Record	Sample rate	32KHz
	Recording format	WAV
	Recording time	Approx 136h (2G Flash)
MP3, WMA, AMV,	Sound output level	10mW/channel(32 ohm)
	MP3 bit rate	8K bps – 320K bps and VBR
	WMA bit rate	5K bps – 384K bps and VBR
	Frequency response	200Hz to 20KHz
Formats supported to playback directly	MP3, WMA, AMV, WAV	
Video formats can converted to AMV format through the included converter	AVI, WMV, MPG, MPEG, ASF, MOV, 3GP, SWF, MP4, VOB, DAT	
Working temperature	0 °C -35 °C	
Operating System	Windows98/SE/ME/2K/XP, Mac OS 10, Linux 2.4.2	

The Specifications are subject to change without notice.

## LIMITED WARRANTY

Craig warrants this product to be free from manufacturing defects in material and workmanship under normal use for a period of 90 days from date of purchase. If service is required, please return the product to the store where it was purchased for exchange; or, pack the unit in the original packing material with all accessories if applicable, a copy of your sales receipt and a Cashier's check or Money Order for \$12.00 ( to cover shipping and handling costs ) payable to Craig Electronics International Ltd. Ship your product freight pre-paid. Your unit will be repaired, replaced or a refund will be forwarded to you within four weeks of receipt of your unit. Please ship your unit to:

Craig Electronics International Ltd.  
1160 NW 163 Drive  
Miami, Fl 33169

This warranty is void if the product has been: a) Used in a commercial application or rental. b) Damaged through misuse, negligence, or abuse. c) Modified or repaired by anyone other than an authorized Craig service center. d) Damaged because it is improperly connected to any other equipment.

Note: This warranty does not cover: a) Ordinary adjustments as outlined in the Owner's Manual which can be performed by the customer. b) Damage to equipment not properly connected to the

## LIMITED WARRANTY (CONTINUED)

- product. c) Any cost incurred in shipping the product for repair.
- d) Damage to the product not used in the USA.

This warranty is not transferable and only applies to the original purchase. Any implied warranties, including the warranty of merchantability, are limited in duration to the period of this expressed warranty and no warranty whether expressed or implied shall apply to the product thereafter.

Under no circumstance shall Craig be liable for any loss or consequential damage arising out of the use of this product. This warranty gives specific legal rights. However, you may have other rights which may vary from state to state. Some states do not allow limitations on implied warranties or exclusion of consequential damage. Therefore, these restrictions may not apply to you.

To Obtain Service on your Product  
email: [service@craigelectronics.com](mailto:service@craigelectronics.com)

Printed in China

CMP622E-IB-E0CV1-B0CV

## Free Manuals Download Website

<http://myh66.com>

<http://usermanuals.us>

<http://www.somanuals.com>

<http://www.4manuals.cc>

<http://www.manual-lib.com>

<http://www.404manual.com>

<http://www.luxmanual.com>

<http://aubethermostatmanual.com>

Golf course search by state

<http://golfingnear.com>

Email search by domain

<http://emailbydomain.com>

Auto manuals search

<http://auto.somanuals.com>

TV manuals search

<http://tv.somanuals.com>