

Creative Modem Blaster V.92 USB DE5773

Information in this document is subject to change without notice and does not represent a commitment on the part of Creative Technology Ltd. No part of this manual may be reproduced or transmitted in any form or by any means, electronic or mechanical, including photocopying and recording, for any purpose without the written permission of Creative Technology Ltd. The software described in this document is furnished under a license agreement and may be used or copied only in accordance with the terms of the license agreement. It is against the law to copy the software on any other medium except as specifically allowed in the license agreement. The licensee may make one copy of the software for backup purposes only.

The Software License Agreement is found in a separate folder on the installation CD.

Copyright © 1998-2003 by Creative Technology Ltd. All rights reserved.

Version 1.0

November 2003

Blaster, Modem Blaster and the Creative Logo are registered trademarks of Creative Technology Ltd. in the United States and/or other countries.

Microsoft and Windows are either registered trademarks or trademarks of Microsoft Corporation in the United States and/or other countries.

Intel and Pentium are trademarks or registered trademarks of Intel Corporation or its subsidiaries in the United States and other countries.

AMD is a trademark of Advanced Micro Devices, Inc.

All other products are trademarks or registered trademarks of their respective owners.

Table of Contents

Introduction	
Before You Begin	i
Recording Model and Serial Numbers.....	i
Checking System Requirements	i
Product Registration	i
Document Conventions.....	ii
1 About your Creative Modem Blaster V.92 USB	
About your modem	1-1
2 Installing your Modem	
Step 1: Installing drivers and software	2-1
Step 2: Connecting your modem to a telephone line.....	2-1
Step 3: Connecting your modem to the computer	2-2
Notes on Telephone Lines	2-4
3 Testing your Modem	
Testing the Installation in Windows 98 SE	3-1
Testing the Installation in Windows 2000.....	3-2
Testing the Installation in Windows ME.....	3-3
Testing the Installation in Windows XP.....	3-4
4 Uninstalling Modem Drivers	
Uninstalling the Modem in Windows 98SE.....	4-1
Uninstalling the Modem in Windows 2000.....	4-2
Uninstalling the Modem in Windows Me	4-3



	Uninstalling the Modem in Windows XP.....	4-4
5	Modem Features	
	Modem On Hold	5-3
	Using Modem On Hold	5-4
A	General Specifications	
B	Troubleshooting	
	Problems with Your Modem	B-1
	Resolving Conflicts in Windows 98SE/ME	B-3
	Resolving Conflicts in Windows 2000/XP	B-3

Modem

BLASTER™

Introduction

Introduction

Before You Begin

This section contains information you should know before using this manual. Read the information carefully before proceeding further.

Recording Model and Serial Numbers

Your modem has a model number and a serial number. Write down these numbers after removing the modem from its packaging. You will need to quote these numbers when contacting our Technical Support office.

Checking System Requirements

The following are the minimum system requirements required for your modem to work properly with your computer:

- 300MHz or faster Intel® Pentium® or AMD® processor
- 40 MB free hard disk space
- 64 MB RAM (128 MB or higher recommended)
- Microsoft® Windows 98 Second Edition (SE), Windows 2000, Windows Millennium Edition (Me) or Windows XP
- DVD/CD-ROM drive for modem software installation
- An audio card for video conferencing

Product Registration

Enjoy a host of benefits by registering your product during installation, or at www.creative.com/register.




Benefits include:

- Service and product support from Creative
- Exclusive updates on promotions and events

Document Conventions

This manual uses the following conventions to help you locate and identify the information that you need.

Table i: Document conventions

Text Element	Use
 A blue notepad icon with a pencil and red lightning bolts emanating from the top, indicating important information.	This notepad icon indicates information that is of particular importance and should be considered before continuing.
 A black alarm clock icon, indicating that failure to adhere to directions may result in loss of data or damage to your system.	This alarm clock icon indicates that failure to adhere to directions may result in loss of data or damage to your system.
 A red triangular warning sign with a black exclamation mark inside, indicating that failure to adhere to directions may result in bodily harm or life-threatening situations.	The warning sign indicates that failure to adhere to directions may result in bodily harm or life-threatening situations.

Modem

BLASTER™

1

About your Creative Modem Blaster
V.92 USB



About your Creative Modem Blaster V.92 USB

About your modem

Your Creative Modem Blaster V.92 USB is the hassle-free way to get online and add V.92 feature support to your PC or notebook. The integrated USB connection and straightforward software setup make installation effortless. V.44 Compression and PCM Upstream support improve your 56K connection with faster downloading, web surfing, and sending speeds.

Modem On Hold lets you pause your Internet connection while you answer the phone or even make outgoing calls. Quick Connect shortens dial-up time to your ISP. And the elegant, compact design makes Modem Blaster V.92 USB perfect for use at home or on the go.



Modem Blaster V.92 USB's integrated USB cable simplifies installation by providing the connection to your computer and power for your modem through a single cable. Dual phone jacks let your computer and telephone share one phone line connection. To find out more about connecting your modem quickly, see Chapter 2, "Installing your Modem".

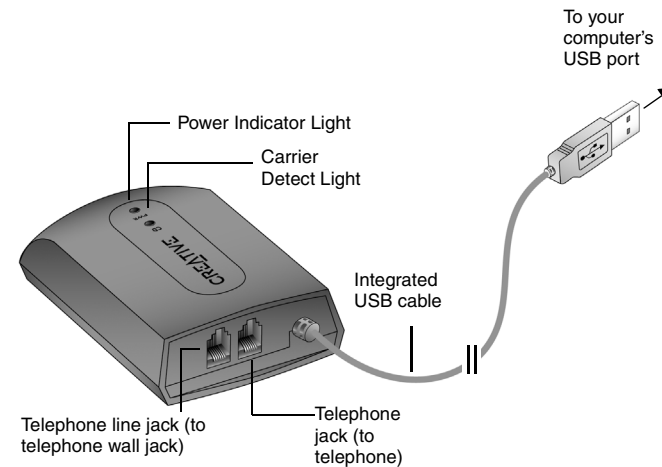


Figure 1-1 Modem Blaster V.92 USB

Modem

BLASTER™

2

Installing your Modem



Installing your Modem

Do not connect your modem to your computer's USB port before installing the drivers from the Installation CD.

Step 1: Installing drivers and software

1. Insert the Installation CD into your CD-ROM drive.
2. Click the names of the drivers and applications you want to install on your computer.
3. Follow the instructions on the screen to complete the installation.
4. Start up your computer when you are prompted.

Step 2: Connecting your modem to a telephone line

1. Find a convenient telephone wall jack.
2. If a phone is already connected to it, unplug the telephone cable from the wall outlet and plug it into the telephone jack on your modem.
3. Connect the supplied telephone cable from the wall outlet to your modem's Telephone Line jack.

Step 3: Connecting your modem to the computer

1. Connect your modem's integrated cable to an available USB port on your computer. You can do this while your computer is turned on.

Depending on the version of Windows you are using, proceed to the appropriate step:

In Windows 98 SE/Me

- Upon connecting your modem to the computer's USB port, you should see Windows detecting your modem and automatically installing the drivers.

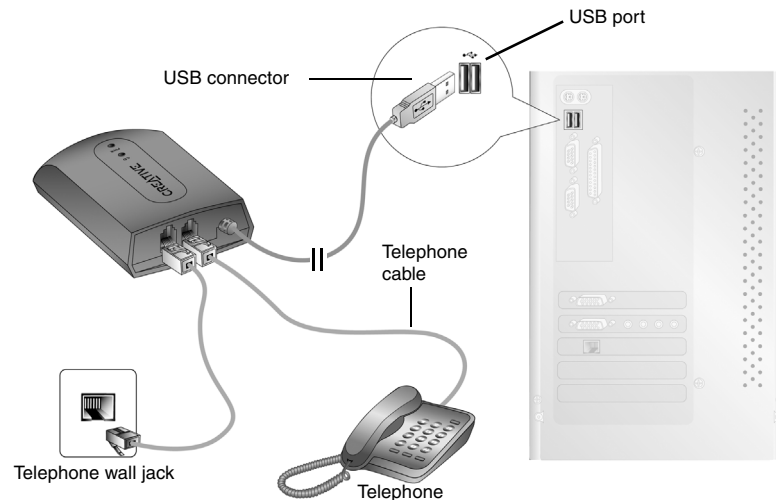


Figure 2-1: Connecting the modem to the computer and telephone line



If the Autostart feature for your CD-ROM drive is not activated, you need to click **Start -> Run ->** and type **D:\setup.exe**, where **D:** represents the drive letter of your CD-ROM.

In Windows XP/2000

1. Upon connecting your modem to the computer's USB port, a **Found New Hardware Wizard** dialog box similar to Figure 2-2 pops up. Click the **Next** button to proceed.
2. If the dialog box similar to Figure 2-3 appears, click the **Continue Anyway** button.



Figure 2-2: Windows XP Found New Hardware Wizard dialog box.



Figure 2-3

Notes on Telephone Lines



After installing the modem driver, test the modem to ensure it has been installed properly. See Chapter 3, “Testing your Modem”.

To ensure that the modem works properly, note that:

- Your modem cannot be used on “party lines”, nor can it be used on toll or coin-operated lines. Contact your local telephone company for help if you are not sure about the suitability of your telephone line.
- This modem is intended for use on an analog telephone line, also called a POTS (Plain Old Telephone Service) line. This modem cannot be connected directly to a digital telephone line, such as those commonly found in businesses. Either obtain an analog line or an analog converter compatible with the telephone line you are using.

Modem

BLASTER™

3

Testing your Modem

Testing your Modem

Testing the Installation in Windows 98 SE

1. Click **Start** -> **Settings** -> **Control Panel**.
2. Double-click the **Modems** icon. The **Modems Properties** dialog box in Figure 3-1 appears.
3. Click the **Diagnostics** tab.
4. Click the COM port that has been assigned to your modem.

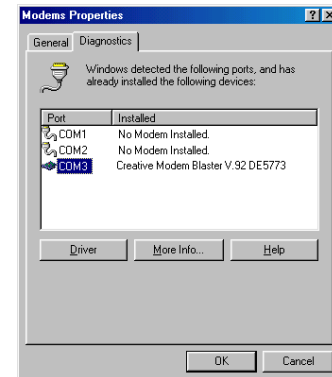


Figure 3-1: Modem Properties dialog box.

5. Click the **More Info** button to display the response status of your modem (Figure 3-2).
If your modem is not responding, it may be due to a conflict between the modem and another peripheral device. To resolve the conflict, you must change the settings on your modem (see “Resolving Hardware Conflicts” on page B-2).

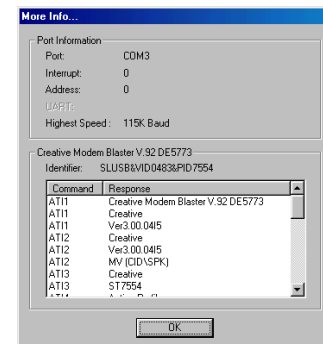


Figure 3-2: Response status of your modem.



Testing the Installation in Windows 2000

1. Click **Start** -> **Settings** -> **Control Panel**.
2. Double-click the **Phone and Modems** icon. The **Phone and Modem Options** dialog box in Figure 3-3 appears.
3. Click the **Modems** tab, then click the **Properties** button. The **Creative Modem Blaster V.92 DE5773 Properties** dialog box appears.
4. Click the **Diagnostics** tab.

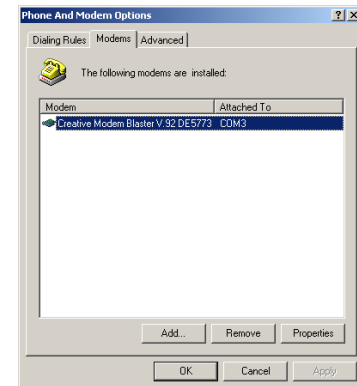


Figure 3-3: Phone and Modem Options dialog box.

5. Click the **Query Modem** button (Figure 3-4) to display the response status of your modem. If your modem is not responding, it may be due to a conflict between the modem and another peripheral device. To resolve the conflict, you must change the settings on your modem (see "Resolving Hardware Conflicts" on page B-2).

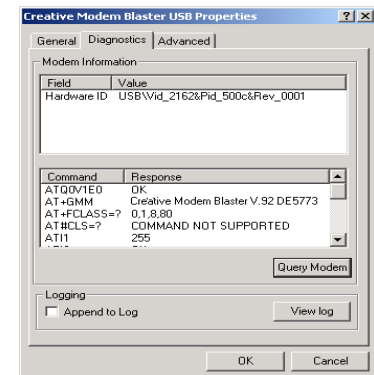


Figure 3-4: Creative Modem Blaster V.92 DE5773 Properties dialog box.

Testing the Installation in Windows ME

1. Click **Start** -> **Settings** -> **Control Panel**.
2. Double-click the **Modems** icon. The **Modems Properties** dialog box in Figure 3-5 appears.
3. Click the **Diagnostics** tab.
4. Click the COM port that has been assigned to your modem.

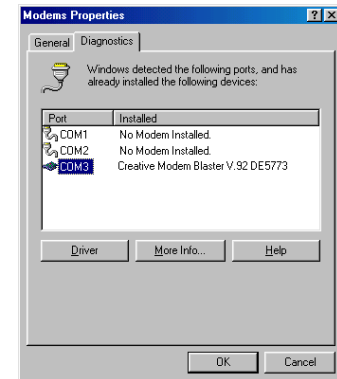


Figure 3-5: Modem Properties dialog box.

5. Click the **More Info** button to display the response status of your modem (Figure 3-6).
If your modem is not responding, it may be due to a conflict between the modem and another peripheral device. To resolve the conflict, you must change the settings on your modem (see “Resolving Hardware Conflicts” on page B-2).

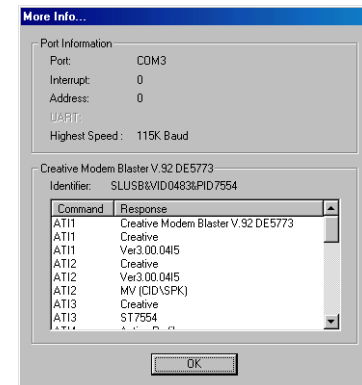


Figure 3-6: Response status of your modem.

Testing the Installation in Windows XP

1. Click **Start** -> **Control Panel**.
2. Click the **Phone and Modem Options** icon. The dialog box in Figure 3-7 appears.
3. Click the **Modems** tab.

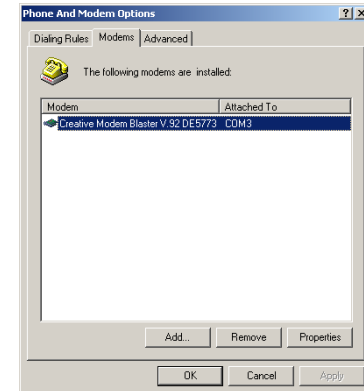


Figure 3-7: Phone and Modem Options dialog box.

4. Click **Creative Modem Blaster V.92 DE5773**, then click the **Properties** button. The **Creative Modem Blaster V.92 DE5773 Properties** dialog box in Figure 3-8 appears.
5. Click the **Diagnostics** tab.
6. Click the **Query Modem** button (Figure 3-8) to display the response status of your modem. If your modem is not responding, it may be due to a conflict between the modem and another peripheral device. To resolve the conflict, you must change the settings on your modem (see “Resolving Hardware Conflicts” on page B-2)

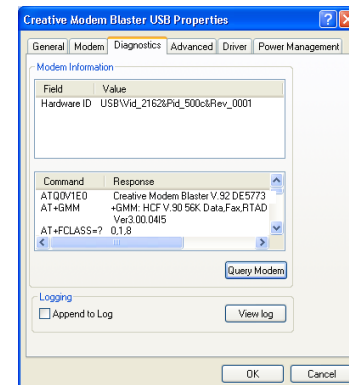


Figure 3-8: Creative Modem Blaster V.92 DE5773 Properties dialog box

Modem

BLASTER™

4

Uninstalling Modem Drivers

Uninstalling Modem Drivers

Uninstalling the Modem in Windows 98SE

1. Click the **Start** -> **Settings** -> **Control Panel**.
2. Double-click the **Add/Remove Programs** icon. The **Add/Remove Programs Properties** dialog box in Figure 4-1 appears.
3. Click **Creative Modem Blaster V.92 DE5773**, then click the **Add/Remove** button.
4. When Windows prompts you to remove the modem, click the **Yes** button.
5. Click the **OK** button.
6. Turn off your computer and disconnect the modem from your USB port.

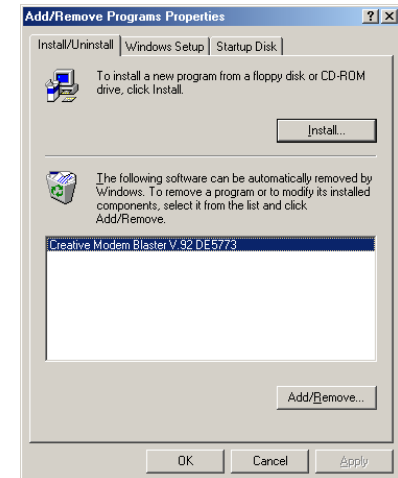


Figure 4-1: *Add/Remove Programs Properties* dialog box.



Uninstalling the Modem in Windows 2000

1. Click **Start** -> **Settings** -> **Control Panel**.
2. Double-click the **Add/Remove Programs** icon. The dialog box in Figure 4-2 appears.
3. Click the **Change or Remove** tab, then click **Creative Modem Blaster V.92 DE5773** and click the **Change/Remove** button.
4. When Windows prompts you to remove the modem, click the **Yes** button.
5. Click the **OK** button.
6. Turn off your computer and disconnect the modem from your USB port.

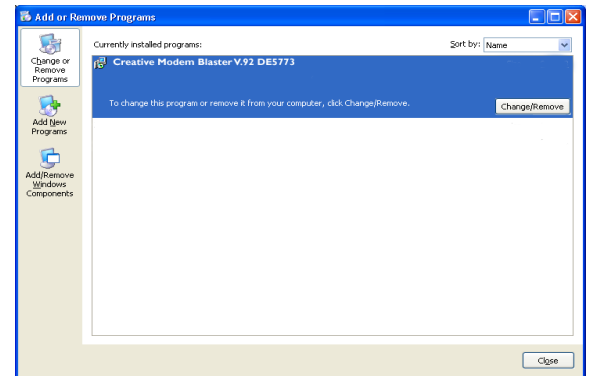


Figure 4-2: Phone and Modem Options dialog box.

Uninstalling the Modem in Windows Me

1. Click **Start** -> **Settings** -> **Control Panel**.
2. Double-click the **Add/Remove Programs** icon. The **Add/Remove Programs Properties** dialog box in Figure 4-3 appears.
3. Click the **Install/Uninstall** tab, then click **Creative Modem Blaster V.92 DE5773** from the list and click the **Add/Remove** button.
4. When Windows prompts you to remove the modem, click the **Yes** button.
5. Click the **OK** button.
6. Turn off your computer and disconnect the modem from your USB port.

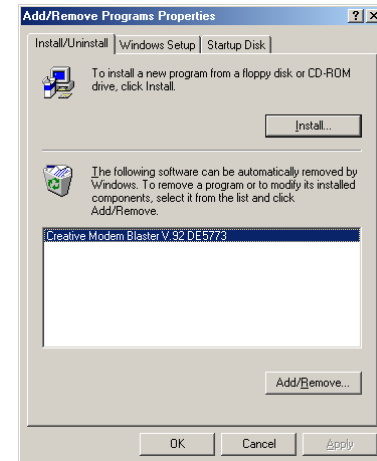


Figure 4-3: Add/Remove Programs Properties dialog box.

Uninstalling the Modem in Windows XP

1. Click **Start** -> **Control Panel**.
2. Click the **Add or Remove Programs** icon. The **Add or Remove Programs** dialog box in Figure 4-4 appears.
3. Click the **Change/Remove** button.
4. Click the **Yes** and **OK** buttons to remove the Modem.

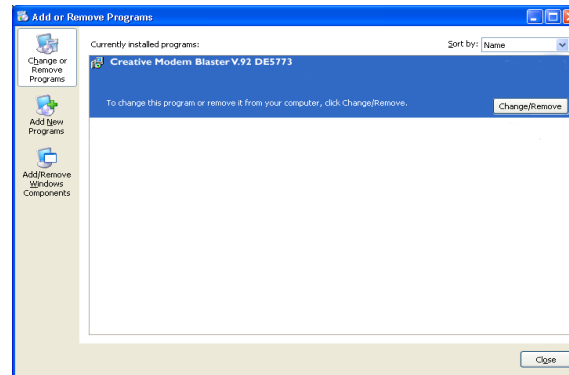


Figure 4-4 : Add or Remove Programs dialog box.

5. Turn off your computer and disconnect the modem from your USB port.

Modem

BLASTER™

5

Modem Features

Modem Features

Besides transferring data and accessing online information, your Creative Modem Blaster has the following features:

Plug and Play



This feature allows you to install your modem easily, as it is automatically configured.

Faxes



Use your modem to send and receive fax documents. This feature also allows you to configure the modem to serve as a fax-on-demand system by using the software provided.

Internet Access



Your modem allows you to access computer bulletin boards and to browse the Internet at speeds of up to 56 Kbps.

Answering Machine



Your modem functions as an answering machine with multiple mail boxes. Remote users can leave messages in your mail box, and you can play back these messages at any time. It even pages you to notify you of new messages!

Caller ID



Modem Blaster software displays phone numbers of calling parties if your phone is Caller-ID enabled.

Video Conferencing



Your modem comes complete with V.90/V.92 standard support, for use with H.32x video conferencing systems.

QuickConnect



This feature drastically reduces the amount of time it takes for your Modem Blaster to establish a connection with your Internet Service Provider. The characteristics of the last call are saved in your computer, and retrieved for subsequent calls, resulting in a shorter connection time.

PCM Upstream



This feature enhances your Modem Blaster's data upload speed from 33.6 Kbps to a maximum of 48 Kbps.

V.44 Data Compression



Your Modem Blaster incorporates the new V.92 standard. This new standard offers V.44 Data Compression technology that allows you to browse the Internet at higher speeds than existing data compression standards.

Modem On Hold



**Incoming
Modem On Hold**

Your Modem Blaster V.92 USB offers complete Modem On Hold support so you can pause your Internet connection while you answer incoming phone calls and while you make outgoing phone calls. Since Modem On Hold also requires support from your Internet Service Provider (ISP), you may need to check with them to ensure that this feature is supported in the area.

Incoming Modem On Hold works with Call Waiting service from your phone company to pause your Internet connection while you answer calls. With the Caller ID service, Incoming Modem On Hold also identifies incoming callers.



**Outgoing
Modem On Hold**

Outgoing Modem On Hold works with the Three-Way Calling service from your Phone company to let you pause your Internet connection while you make phone calls.

Using Modem On Hold



Receiving a call

- Your phone line needs to be Call Waiting enabled to support Modem On Hold.
- Your Internet Service Provider (ISP) must be able to support Modem On Hold features.
- The length of hold time available is set by your ISP.

When a phone call comes in while you are online, a dialog box similar to Figure 5-1 appears, showing information about the caller.

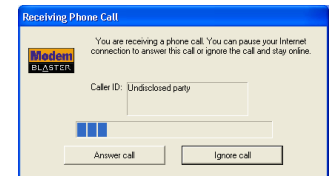


Figure 5-1

1. Either click the **Answer Call** button to pause your Internet connection and answer the call, or click the **Ignore Call** button to remain online. If you accept the call, a dialog box similar to Figure 5-2 appears, indicating how much time you have to complete your call.

2. After completing your call, hang up the telephone and then click the **Resume my Internet Connection** button.

Note: The length of hold time available is determined by your ISP.

If your call is longer than the available hold time, your Internet

connection will be disconnected and you will need to dial-up again after completing the call.

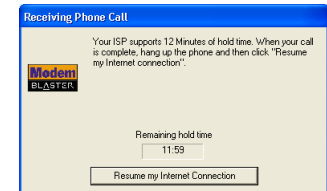


Figure 5-2

Making a call



Outgoing MOH requires Three-Way Calling

If you are connected to the Internet and wish to make a call, follow the instructions below:

1. Right-click the **Creative** icon on the Windows taskbar (Figure 5-3).
2. Select the **Make a Phone Call** function.
3. Pick up your phone and dial as you would normally. A dialog box similar to Figure 5-4 appears, indicating how much time you have to complete your call.
4. When you complete your call, hang up the telephone and then click the **Resume My Internet Connection** button.
Note: The length of hold time available is determined by your ISP. If your call is longer than the available hold time, your Internet connection will be disconnected and you will need to dial-up again after completing the call.



Figure 5-3

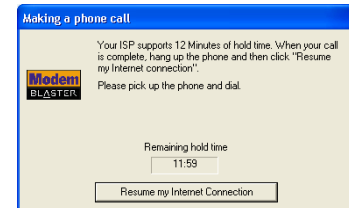


Figure 5-4

Modem

BLASTER™

A

General Specifications

General Specifications

This appendix lists your modem's general specifications.

Data Features

- Integrated data, fax, and voice mail modem
- 56,000/54,667/53,333/52,000/50,667/49,333/48,000/46,667/45,333/42,667/41,333/40,000/38,667/37,333/36,000/34,667/33,600/31,200/28,800/26,400/24,000/21,600/19,200/16,800/14,400/ 12,000/9,600/7,200/4,800/2,400/1,200/300 bps data speeds
- Compatibility with the following data modem standards:
 - V.92, V.90, V.34, V.32bis, V.32, V.23, V.22bis, V.22, and V.21; Bell 212A and 103.
 - V.42 LAPM and MNP2-4 error correction.
 - V.44, V.42bis and MNP5 data compression.
 - Compression, line control, and error control are implemented in hardware. Therefore, no special drivers or libraries are needed to take advantage of the higher speeds and data reliability.
- Automatic dial and answer capabilities.



Fax Features

- ❑ Fax speeds up to 14,400 bps for send and receive.
- ❑ Compatibility with the following fax modem transmission standards:
 - V.17 (14400 bps)
 - V.21 Channel 2 (300 bps)
 - V.27ter (7200 bps)
 - V.29 (9600 bps)

Video Conferencing Support

- ❑ Supports ITU V.92 standard to allow high performance video conferencing over standard phone lines and the internet. Video Conferencing standards are H.324 and H.323.

Modem

BLASTER™

B

Troubleshooting

Troubleshooting

Problems with Your Modem

This appendix provides tips and solutions for resolving some of the problems you might encounter with Creative Modem Blaster V.92 DE5773 either during installation or normal use.

The modem fails to accept commands to dial or answer a call.

There may be an improper telephone line connection.

Check the following:

- Make sure the telephone cable is attached to the Telephone Line Jack.
- Check that all devices are turned on.

There is interference on the telephone line that is connected to the modem.

To solve this problem:

Try moving the telephone line away from any power source, monitor, printer or any computer cable.

The modem cannot connect to the Internet at 56,000 bps.

This may be due to line conditions in your area. Due to FCC regulations and/or line conditions, it is not always possible to achieve the maximum data rate.

To solve this problem:

Try moving the telephone line away from any power source, monitor, printer or computer cable.



The modem or communications software fails to detect that the remote user has hung up.

The modem or communications software relies on the dial tone, busy tone or silence period to detect that a remote user has hung up.

This detection may fail due to one of the following reasons:

- Your local telephone system does not generate the dial or busy tone when the remote user hangs up.
- The silent period for the modem or communications software to detect that the remote user has hung up is not long enough.
- The modem or communications software cannot detect a different dial or busy tone. For example, if you are connecting to a PABX system, the dial or busy tone generated is different from the usual dial or busy tone.

To solve this problem:

Prompt the remote user to respond. This may, however, result in a long delay before the communications software responds to the remote user hanging up. To minimize this delay, modify the following settings:

- Voice message recording time.
- Number of prompts.
- Time to wait for a response after prompting.

Resolving Hardware Conflicts

Hardware conflicts may occur when two or more peripheral devices are set to use the same I/O address, IRQ line or DMA channel.

To resolve conflicts in Windows 98SE, Windows 2000, Windows Me or Windows XP, change the resource settings of your modem or the conflicting peripheral device using Device Manager.

Resolving Conflicts in Windows 98SE/ME



If you are unsure of which peripheral device is causing the conflict, you can isolate the source of the problem by temporarily removing all devices (except your modem and essential devices such as the disk controller). After that, add the devices back one at a time until the device that is causing the conflict is found.

Resolving Conflicts in Windows 2000/XP

To run Device Manager:

1. Click **Start** -> **Settings** -> **Control Panel**.
2. Click the **System** icon. The **System Properties** dialog box appears.
3. Click the **Device Manager** tab.
4. Double-click **Modem**.
5. Select your modem and click the **Properties** button. The **Properties** dialog box of the modem appears.
6. Click the **Resources** tab.
7. Click the **Use Automatic Settings** check box to select it. If this check box is already selected, you need to go to the **Properties** dialog box of the conflicting peripheral device and select the same check box there.
8. Restart your system to allow Windows 98/98SE to reassign resources to your modem and/or the conflicting peripheral device.

To run Device Manager:

1. Click **Start** -> **Settings** -> **Control Panel**.
2. Click the **System** icon. The **System Properties** dialog box appears.
3. Click the **Hardware** tab.
4. Click the **Device Manager** button.
5. Double-click **Modem**.
6. Click the name of your modem.
7. Right-click the name of your modem.
A menu appears.
8. Select the **Properties** option.
9. Click the **Resources** tab.



10. Click the **Use Automatic Settings** check box to select it. If this check box is already selected, you need to go to the **Properties** dialog box of the conflicting peripheral device and select the same check box there.
11. Restart your system to allow Windows 2000/XP to reassign resources to your modem and/or the conflicting peripheral device.

Free Manuals Download Website

<http://myh66.com>

<http://usermanuals.us>

<http://www.somanuals.com>

<http://www.4manuals.cc>

<http://www.manual-lib.com>

<http://www.404manual.com>

<http://www.luxmanual.com>

<http://aubethermostatmanual.com>

Golf course search by state

<http://golfingnear.com>

Email search by domain

<http://emailbydomain.com>

Auto manuals search

<http://auto.somanuals.com>

TV manuals search

<http://tv.somanuals.com>