

CROWN

Specifications

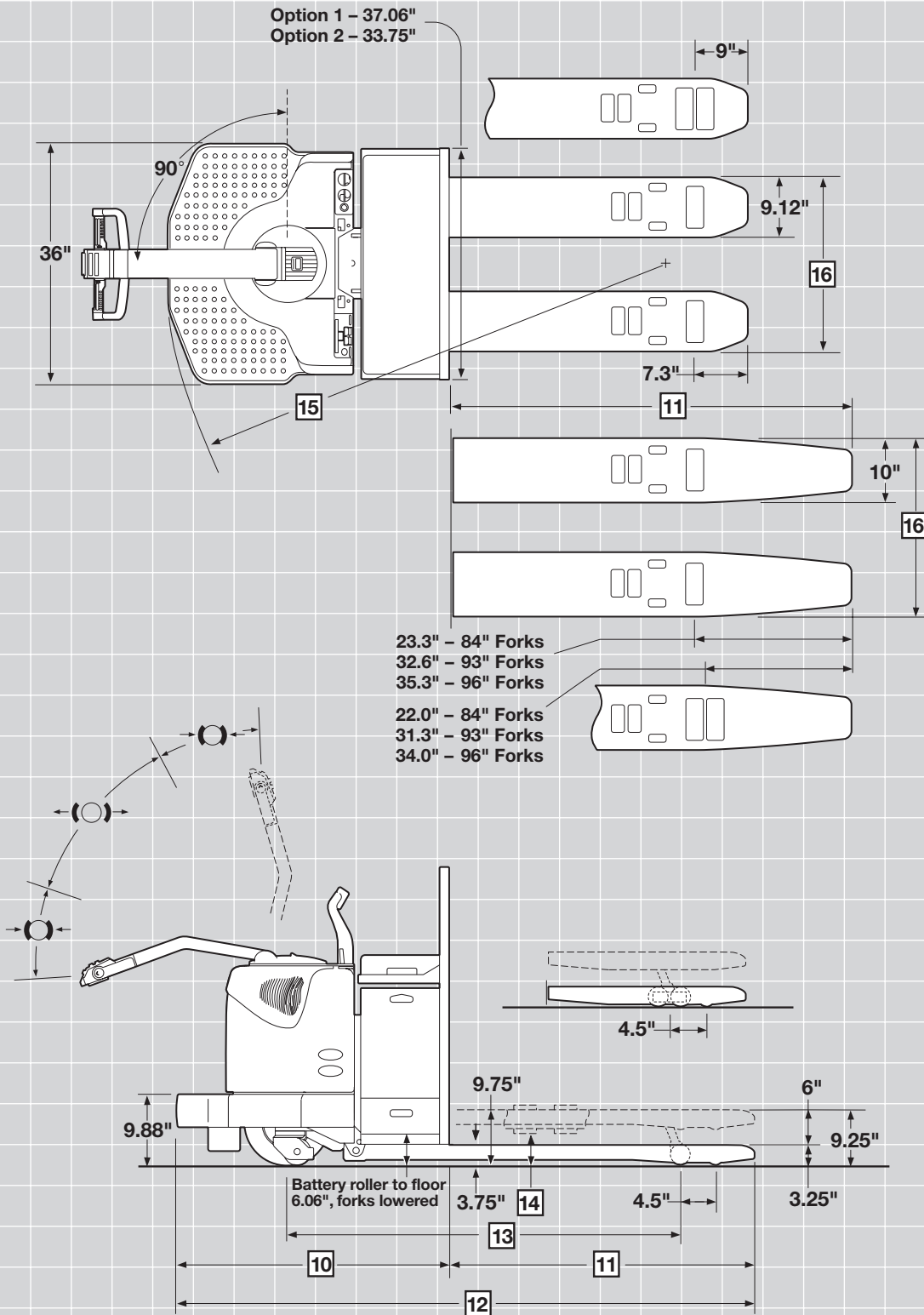
PE 4000 Series

End Control
Pallet Truck

PE 4000

Series





PE 4000 Series

Specifications

General Info	1	Manufacturer		Crown Equipment Corporation		
	2	Model		PE 4000		
	3	Load Capacity	lb	6000/8000		
	4	Power	Electric	24 Volts		
	5	Operator Type	Stand-up	Walk/Ride		
Dimensions	8	Lift Height	in	9.25		
	9	Lift	in	6		
	10	Head Length	Option 1/Option 2 in	36.7/43.2		
	16	Outside Fork Spread	Standard Tip in	22/27		
Extended Tip in			23/28			
Performance	17	Speed Travel		Power Unit First	Forks First	
			Empty mph	8.6	5.5	
			4000 lb mph	7.0	5.2	
			6000 lb mph	6.3	5.1	
			8000 lb mph	6.0	5.0	

	PE 4000 Series			Standard-Tip Forks						Extended-Tip Forks		
	Nominal Fork Length	in		36	42	48	54	60	96	84	93	96
11	Actual Fork Length	in		35.75	41.75	47.75	53.75	59.75	95.75	83.75	93	95.75
12	Overall Length	Option 1 in		72.44	78.44	84.44	90.44	96.44	132.44	120.44	129.69	132.44
		Option 2 in		78.94	84.94	90.94	96.94	102.94	138.94	126.94	136.19	138.94
13	Wheelbase	Option 1 in		43.12	49.12	55.12	61.12	67.12	103.12	75.12	75.12	75.12
		Option 2 in		49.62	55.62	61.62	67.62	73.62	109.62	81.62	81.62	81.62
14	Grade Clearance	Option 1 %		44	38	34	30	27	18	24	24	24
		Option 2 %		38	33	30	27	25	17	22	22	22
15	Turning Radius	Option 1 in		60.95	66.93	72.90	78.88	84.88	120.8	92.9	92.9	92.9
		Option 2 in		67.43	73.40	79.38	85.38	91.38	127.3	99.3	99.3	99.3
7	Truck Weight	6000 lb lb		1496	1512	1528	1544	1560	1710	1643	1724	1739
		8000 lb lb		1515	1539	1563	1587	1611	1775	1703	1784	1799

Wheels and Tires	Model		PE 4000-60	PE 4000-80	
	Drive Tire	in	13 x 4.5 x 8 Poly	13 x 4.5 x 8 Poly	
	Casters	in	2 - 4 x 2.5 Poly	2 - 4 x 2.5 Poly	
	Load Wheels			2 - 3.25 x 6.5 (-35)	2 - 3.25 x 6.5 (-35)
				-10 Low rolling resistance, cut/tear resistance. Docks, rough floors, floor debris and traction.	
				-30 Moderate cut/tear resistance, high capacity. High capacity transport. Not for dock use.	
			-35 Highest cut/tear resistance offered. Extremely high capacity, low rolling resistance. Docks, rough floors and floor debris.		
			-40 Combines good cut/tear resistance and very high capacity. Use where nothing else works.		

Maximum Battery Size

Option 1 - 6.69" wide x 34.44" long x 31.62" high

Option 2 - 13.19" wide x 31.12" long x 31.62" high

Batteries

Option 1 - 24-volt, 330 amp hour, 7.7 Kwh

Min/Max weight 360/900 lb

Option 2 - 24-volt, 930 amp hour, 21.5 Kwh

Min/Max weight 975/1500 lb

Standard Equipment

1. 24-volt fused electrical system
2. Model 1404C Crown separately excited control
3. InfoPoint™ - Quick reference guide and maps support diagnostics
4. Polyurethane load wheels
5. Heavy-duty articulating shim free casters
6. Full width, raise, lower, horn, and end mounted reversing button in control handle
7. Raise, lower, horn and high speed button on operator grab bar
8. 175 amp battery connector
9. Key switch
10. Horn
11. Lift-off left and right battery retainers
12. Anti-tie down
13. Platform cushion (non-freezer conditioned trucks)
14. Rubber knee pad
15. One-touch high speed
16. Steel doors
17. Color-coded wiring

Optional Equipment

1. Curtis Spyglass Gage (discharge indicator with lift lockout, hour meter, and event codes)
2. Hour meter
3. Coast control
4. Quick Coast™
5. QuickPick™ control handle
6. Quick adjustment caster
7. Quick adjustment caster with torsion bar package
8. Battery retainer interlock switch
9. Quick battery disconnect handle (right side only)
10. Left side battery connector
11. Battery compartment rollers
12. Lift-off load backrest
13. Hinged load backrest with quick release (48", 60" or 72" high)
14. Bolt-on load backrest
15. Work Assist Accessories:
 - Strobe light
 - Flashing light
 - Work lights
 - Fan
 - Storage pouch
 - Pad clip and hook
 - Shrink wrap tray (Option 2 battery only)
16. Storage module (Option 2 battery only)
17. 7" wide fork (6000 lb only)
18. Drive tire and load wheel options
19. Toggle switch in lieu of key
20. Tandem load wheels
21. Dual load wheels
22. Cold and corrosion conditioning
23. Special color paint
24. Skid adaptor
25. Rubber skirt extension

Operator Area and Controls

The PE 4000 Series has a new operator platform which increases operator comfort and productivity. Rounded edges and careful placement of operator contact points make the PE 4000 Series user friendly. Contoured steel doors allow for maximum operator and foot room.

The Crown PE 4000 Series has a microcellular composition floor mat and a rubber knee pad for improved operator comfort.

The Crown PE 4000 Series has dual, soft urethane twist grips with automatic return to neutral when released. Two textures and a unique "cam" design aid in plugging, steering and long distance travel. On the control pod are full width raise, lower, and horn buttons for easy actuation. Reversing button in control handle reverses direction of travel if button should come in contact with operator. Soft urethane operator grab bar provides operator security and comfort. Grab bar has raise, lower, horn and high speed controls for improved productivity.

One touch high speed allows operators to activate the high speed button once and not have to hold the button down to travel in high speed. High speed is deactivated when the twist grip returns to neutral or when the brake is applied.

The Quick Coast™ option allows the truck to coast as the operator walks down the aisle performing low-level order picking. The Quick Coast switch is conveniently placed on the grab bar for easy activation. The Quick Coast option includes infinitely variable handle positioning within the coast range, and the audible and visual feedback features remind operators the Quick Coast option is activated. The Quick Coast option meets current ANSI/ASME requirements.

The QuickPick™ control handle option, normally used in conjunction with coast control or Quick Coast™, assists an operator to perform low-level order picking. The QuickPick control handle has two switches on each side of the handle. The QuickPick control handle activation allows the truck to travel, power unit first, at walking speed.

Many optional features for the operator area and controls are available to suit a wide range of applications.

Electrical System

Heavy duty 24-volt electrical system for demanding warehouse, dock and transport applications. The new 1404C separately excited traction control integrates many of the operating features to provide excellent control and reliability. Directional contactors are eliminated while traction speeds have been improved for optimum productivity. Crown manufactured, separately excited, high torque drive motor is application designed for reliability and ease of service.

Anti-tie down is a standard feature designed to encourage proper operation of the truck by deterring the taping or tying down of the high speed control button. A lift limit switch operates at full lift height to shut pump motor off at full fork elevation. Color-coded wiring is used for ease of service.

Hydraulics

Heavy duty pump, motor, reservoir and control are assembled into one unit. A centrally located lift cylinder, mounted vertically, is equipped with long life polyurethane packings. A pressure compensating flow control valve is an integral part of the valve block and regulates lowering speed. Overload valve protects hydraulic components.

Drive Unit

All gear drive from drive motor to drive wheel axle. Drive tire axle is mounted in the drive unit on both sides for maximum strength in rough floor or docking applications. Drive unit is top and bottom mounted. Top mount is a large, tapered roller bearing for vertical or horizontal forces. Bottom mount has four shock mounted rollers on drive unit running in a hardened steel roller race. Gear train runs in oil-filled, sealed housing.

Caster System

Standard on the PE 4000 Series are shim free, spring-loaded, articulating, stabilizing casters designed and manufactured by Crown for increased truck performance and service life.

Crown has designed two optional caster systems for the PE 4000 Series to meet high-volume warehouse requirements:

Option 1: Quick adjustment casters enable braking, traction, steer effort and stability to be "balanced" based on your specific applications. This system can also increase drive tire life by as much as 60 percent by permitting more tire wear.

Option 2: All of the advantages of quick adjustment casters are yours, in addition to a torsion bar suspension that maximizes stability on tall, unwieldy and less stable loads.

Fork Assembly

Fork width - 9.12" on standard-tip fork models, 10" on extended-tip fork models. Fork spread - 22" and 27" standard on standard-tip models. 23"- 26" spread available in one inch increments. 23" and 28" standard on models with extended-tip models. Fork spreads from 24"- 27" available in one-inch increments. Fork lengths - 36, 42, 48, 54, 60, 96" with standard tip; 84, 93, and 96" forks available with extended tip design for shorter wheelbase.

To facilitate pallet entry/exit Crown has engineered several features into their fork assembly. Standard-tip forks have pallet entry rollers to lift fork over bottom board of pallet. Rollers are made of high molecular weight polyethylene with .75" axle and roll pin.

Extended-tip fork design has totally enclosed tip, with full length convex bottom surface creating an entry ramp. Ramp design helps fork glide over bottom boards of pallet and keeps welded edges from touching bottom boards of pallet.

Abrasion resistant steel entry/exit slides on both sides of each fork have convex bottom surfaces to prevent snagging as forks move over bottom boards of pallet. One piece design with radiused edges are welded away from contact point of slide.

Exit roller design prevents load wheel from dropping after crossing bottom board. The 4" wide, steel exit roller is positioned directly behind the load wheel to keep the fork rolling. Entry/exit slide design also assists in trouble free pallet entry/exit.

Fork adjustment is done at the toe with no need to remove a cover plate. Fork heel height adjustment is done quickly without removing battery. Quick and easy fork adjustment promotes servicing of fork assembly to keep pallet entry/exit productive.

Pull rod design incorporates a replaceable "tenon" design for fast servicing of pull rod while still in the truck.

Power Unit Structure

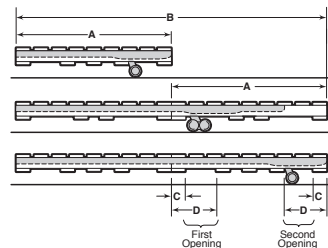
Rugged steel doors are suspended on heavy-duty pin hinges. Doors swing wide for good access. Doors also can be lifted off for unrestricted service access. Door bolts have exclusive convex design that mates with concave door holes for fast reinstallation of bolts. Heavy steel skirt surrounds entire area.

Brake

Internal expanding mechanical brake with fin-cooled 6" drum. Braking on PE is actuated by control handle position.

Pallet Planning Guide

On standard-tip fork models, the load wheel will drop in the second opening of the pallet when "A" or "B" dimension equals the nominal fork length. On extended-tip fork models, the load wheel will drop in the first opening of the second



pallet. On models with a single load wheel, the "C" dimension should be 6" maximum and the "D" dimension should be 14" minimum. On models with tandem load wheels, the "C" dimension should be 6" maximum and the "D" dimension should be 17" minimum. Customers that need tandem load wheel trucks, but use pallets with smaller openings, may be accommodated if the maximum lift height of the truck is reduced. Contact your Crown dealer for details

Other Options

1. Audible travel alarm
2. Flashing lights

Safety considerations and dangers associated with audible travel alarms and flashing lights include:

- Multiple alarms and/or lights can cause confusion.
- Workers ignore the alarms and/or lights after day-in and day-out exposure.
- Operator may transfer the responsibility for "looking out" to the pedestrians.
- Annoys operators and pedestrians.

Dimensions and performance data given may vary due to manufacturing tolerances. Performance is based on an average size vehicle and is affected by weight, condition of truck, how it is equipped and the conditions of the operating area. Crown products and specifications are subject to change without notice.



Crown Equipment Corporation
New Bremen, Ohio 45869 USA
Tel 419-629-2311
Fax 419-629-3796
crown.com

Because Crown is continually improving its products,
specifications are subject to change without notice.

Crown, the Momentum symbol, InfoPoint,
Quick Coast and QuickPick are trademarks of
Crown Equipment Corporation.

Copyright 2003 Crown Equipment Corporation
SF14291 Rev. 10/03
Printed in U.S.A.

Free Manuals Download Website

<http://myh66.com>

<http://usermanuals.us>

<http://www.somanuals.com>

<http://www.4manuals.cc>

<http://www.manual-lib.com>

<http://www.404manual.com>

<http://www.luxmanual.com>

<http://aubethermostatmanual.com>

Golf course search by state

<http://golfingnear.com>

Email search by domain

<http://emailbydomain.com>

Auto manuals search

<http://auto.somanuals.com>

TV manuals search

<http://tv.somanuals.com>