

ELECTRIC PEDESTAL KETTLE



Model	Capacity	
EP-20	20 Gallon	76 Litre
EP-30	30 Gallon	114 Litre
EP-40	40 Gallon	152 Litre
EP-60	60 Gallon	227 Litre
EP-80	80 Gallon	303 Litre
EP-100	100 Gallon	379 Litre

SPECIFICATIONS:

Shall be a CROWN Model _____ self-generating, electric, pedestal kettle. A double wall kettle interior shall form a steam jacket around the lower $\frac{2}{3}$ of the kettle. The jacket enclosure shall contain water and anti-freeze which is factory sealed. The bottom of the kettle shall be of hemispherical design for superior heat circulation. Pedestal base shall have four $\frac{7}{16}$ of an inch holes evenly spaced for securing unit to floor.

Construction shall be all welded satin finish, stainless steel, type 304.

The controls shall include a power switch, thermostat, pilot light, low water light, vacuum/pressure gauge, safety valve, and low water shut off.

All kettles shall be standard with removable elements.

The kettle shall operate in a temperature range of 100°F to 290°F (38°C to 144°C) at a maximum pressure of 50 psi (3.4 kg/cm²).

Convenience features shall include a counterbalanced hinged stainless steel cover and a 2" (50 mm) sanitary drawoff valve with a heat resistant handle.

OPERATION SHALL BE BY:

Electrically, self-generating closed steam system equipped for operation on:

- 208 VAC, 3 Phase, 50/60 Hz
- 230 VAC, 3 Phase, 50/60 Hz
- 240 VAC, 3 Phase, 50/60 Hz

OPTIONAL ITEMS AT EXTRA COST:

- Type 316 stainless steel liner for high acid content products
- Triple basket assembly
- 3" (76 mm) draw-off valve
- High wattage heaters for faster heating
- Double pantry faucet with swing spout
- Single pantry faucet with swing spout
- Strainer for draw-off valve
- Spring assist cover for 20-40 gallon
- 380, 415 or 480 VAC, 3 Phase, 50/60 Hz
- 220/380, 240/415 VAC, 3 Phase, 4 Wire
- Graduated measuring stick
- Strainer hook



SERVICE CONNECTIONS

EC – Electrical Connection to be as specified on data plate.

ELECTRICAL CHARACTERISTICS

MODEL	208V		230V		240V		380V		415V		480V	
	KW	AMP	KW	AMP	KW	AMP	KW	AMP	KW	AMP	KW	AMP
EP-20	12	33.4	12	30.1	12	28.9	12	18.3	12	16.7	12	14.5
EP-30	15	41.7	15	37.7	15	36.1	15	22.8	15	20.8	15	18
EP-40	18	50	18	45.2	18	43.4	18	27.4	18	25	18	21.7
EP-60												
EP-80												
EP-100	24	66.6	24	60.2	24	57.7	24	36.5	24	33.3	24	28.9

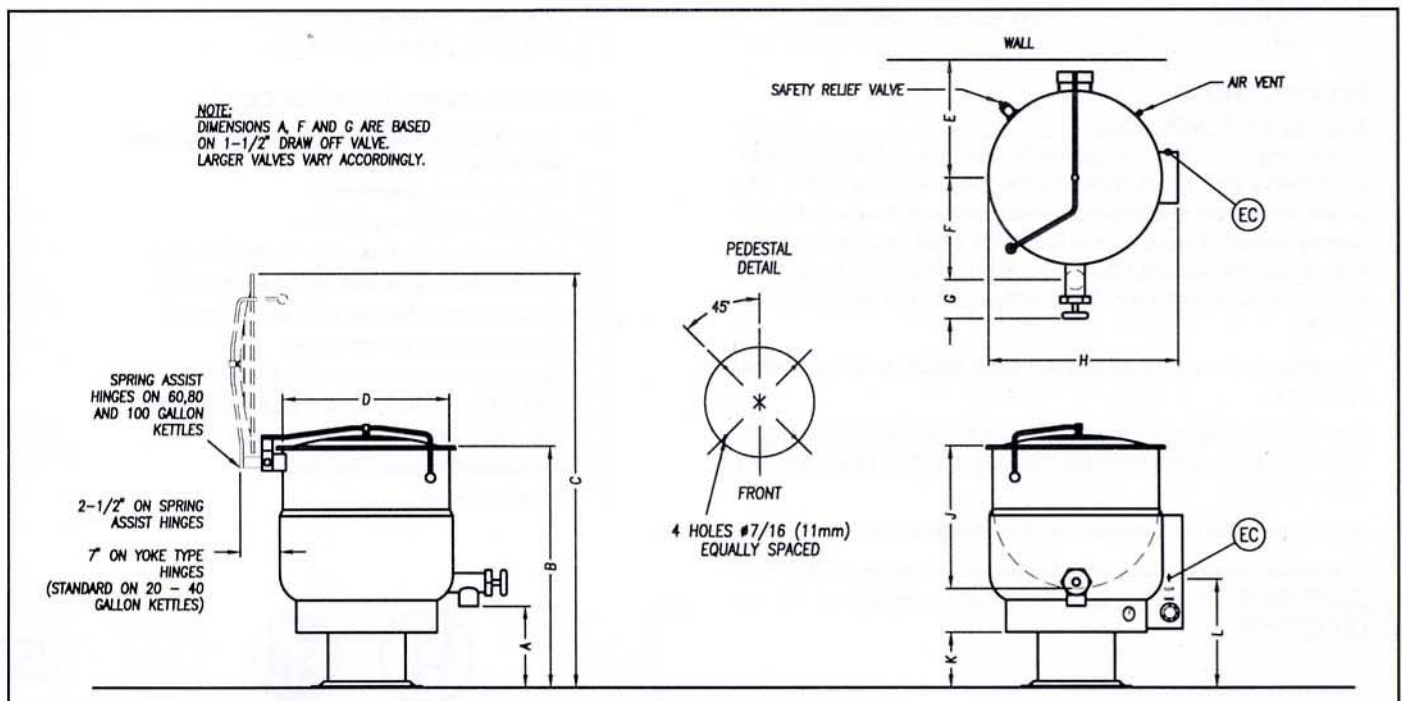
Optional at Extra Cost:

24KW Elements on EP-40, EP-60 & EP-80

33KW Elements on EP-60, EP-80 & EP-100

DIMENSIONS

MODEL	CAPACITY		A	B	C	D	E	F	G	H	J	K	L
EP-20	20 gallons	inches	18	38	60.5	21	18.5	13.75	6	23.75	18	14	21
	76 litres	mm	457	965	1537	533	470	350	152	629	457	356	533
EP-30	30 gallons	inches	16	38	63.5	24	20	15	6	27.75	20	12.5	19
	114 litres	mm	406	965	1613	610	508	381	152	705	508	318	483
EP-40	40 gallons	inches	13.5	38	65	26	21	16	6	29.75	22.5	9	17
	152 litres	mm	343	965	1651	660	533	406	152	756	572	229	432
EP-60	60 gallons	inches	14	42	75	29.5	19	17	6	33.75	26	11	17.25
	227 litres	mm	356	1067	1905	749	483	432	152	857	660	280	438
EP-80	80 gallons	inches	15	45	81	33	20.5	18.5	6	36.75	28	12.75	18
	303 litres	mm	381	1143	2058	838	521	470	152	933	711	324	458
EP-100	100 gallons	inches	15	48	87	35.5	22	20.5	6	40	30	13	20.5
	379 litres	mm	381	1219	2210	902	559	521	152	1016	762	330	521



As continued product improvement is a policy of Crown, specifications are subject to change without notice.

Free Manuals Download Website

<http://myh66.com>

<http://usermanuals.us>

<http://www.somanuals.com>

<http://www.4manuals.cc>

<http://www.manual-lib.com>

<http://www.404manual.com>

<http://www.luxmanual.com>

<http://aubethermostatmanual.com>

Golf course search by state

<http://golfingnear.com>

Email search by domain

<http://emailbydomain.com>

Auto manuals search

<http://auto.somanuals.com>

TV manuals search

<http://tv.somanuals.com>