



[www.cyberpowersystems.com](http://www.cyberpowersystems.com)

## **Quick Installation Guide**

### **Network Management Card**

*Intelligent Network Management Card allows UPS to be managed, monitored, and configured via SNMP Card*

*Configuration Tool*

# INSTALLATION GUIDE

## Step 1. Hardware and Tool Installations

1. Connect the Ethernet cable to the LAN port of the CyberPower Network Management Card.
2. Connect the CyberPower Network Management Card to the UPS communication port (serial port). The included serial cable may be used if needed.
3. Connect the supplied AC adapter (for select UPS models only) to the Network Management Card Adapter and plug into the wall socket.
4. Press the Reset Button on the Network Management Card continuously for 7 seconds to ensure the IP Address is set to its default value.
5. Double click the “SNMP Card Configuration Tool” installation file, “Setup.exe” from “\tools\wsnmpcfg” folder In CDROM drive.
6. The “SNMP Card Configuration Tool” Setup Wizard is shown as Figure. 1. Please follow the “Setup Wizard” instruction until completes the software installation.
7. The “SNMP Card Configuration Tool” folder will appear under “All Programs” folder (under “My Computer”) when you install successfully.



Figure 1. The SNMP Card Configuration Tool Setup Wizard.

## Step 2. Setup the IP address for the SNMP Card.

The SNMP Card will initially try to acquire an IP address from the DHCP network service. You can run the “wsnmpcfg.exe” program (available in the “All Programs”>“SNMP Card Configuration Tool” folder) to display the card’s current IP address.

In this section, it will be introducing the “SNMP Card Configuration Tool” program.  
If a DHCP network service is not available or you want to assign a new IP Address to the SNMP card, please follow the steps listed below:

### I. IP setup using “SNMP Card Configuration Tool” program:

1. Please run the “wsnmpcfg” program in the “All Programs”->“SNMP Card Configuration Tool”.
2. The main dialog of the “SNMP Card Configuration Tool” program is shown as Figure. 2. The User can obtain information of the SNMP card through the GUI.
3. The "Refresh" button is used to search the entire SNMP card device in local network.

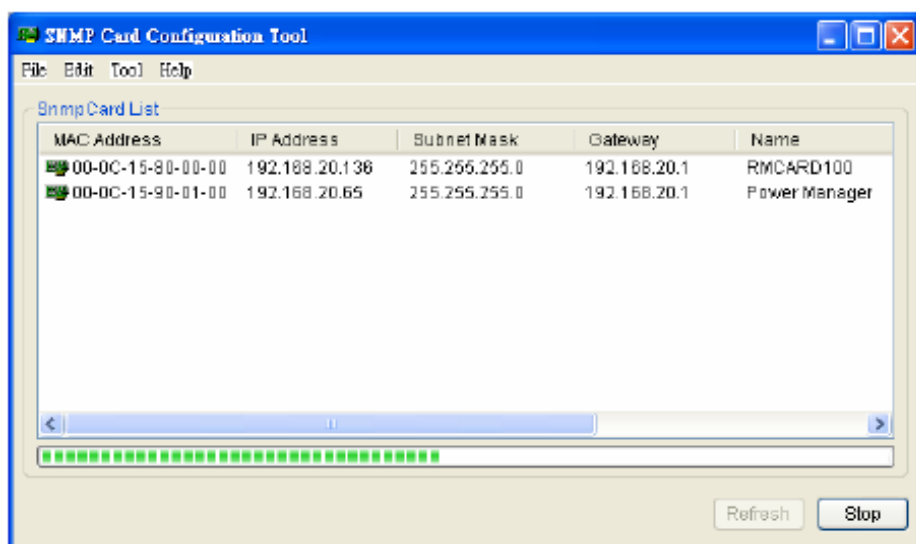


Figure 2. The main dialog of the “SNMP Card Configuration Tool” program.

4. Then choose the 「Setup as selected」 under 「Tool」 menu or double click the SNMP card device.
5. You can modify the new IP, new subnet mask, and new gateway address through the IP or MAC address in the SNMP card setting dialog, as shown in figure 3.

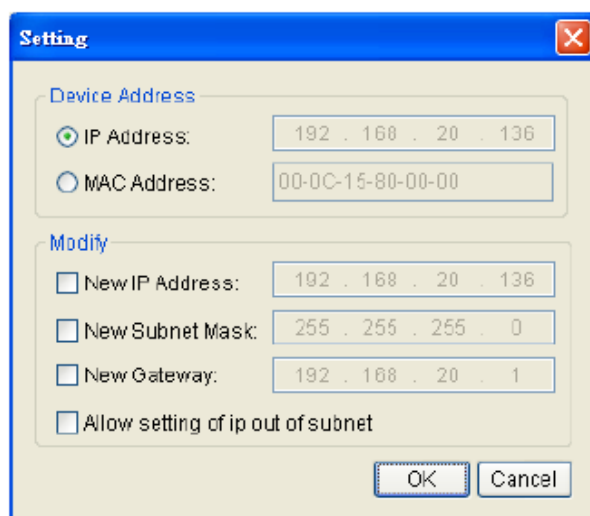


Figure 3. The SNMP card setting dialog.

6. First, choose either IP or MAC address from device address option.
7. Then click on each checkbox to modify new IP, new subnet mask or new gateway address from modify option. Last, input the new address on the right for the chosen checkbox.
8. You need to input password of the SNMP card (Note 3) in the authentication dialog, as shown in figure 4.

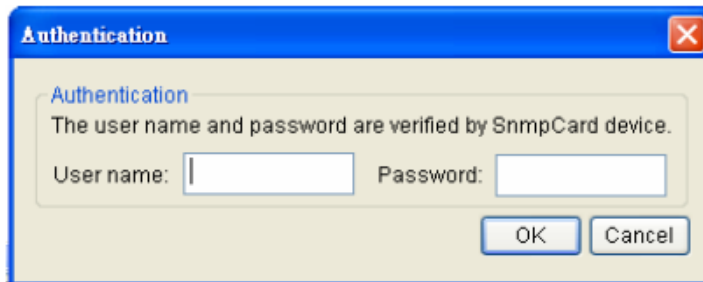


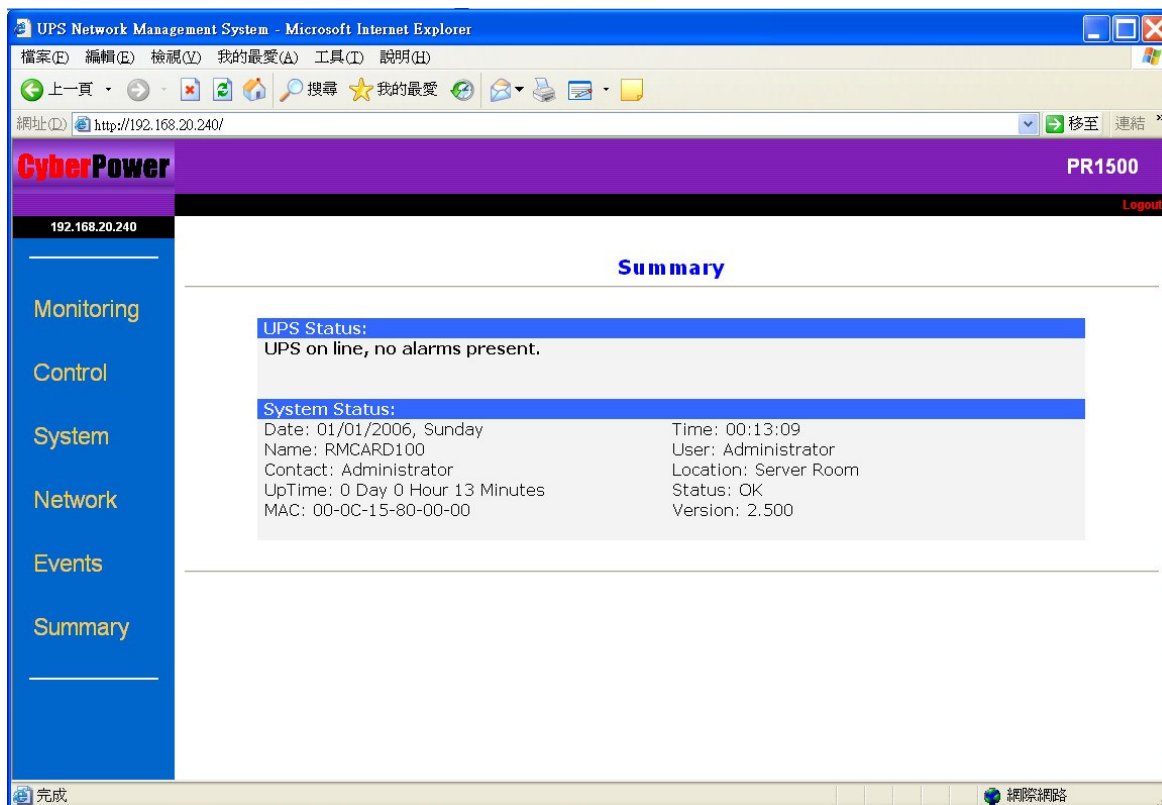
Figure 4. Authentication dialog.

9. If you set IP address successfully, then it will pop out the IP set up OK message, as shown in figure 5.
10. If you want to know more detail settings, please refer to online help (Press "F1" or Choose the 「Help」 under 「Help」 menu).



Figure 5. Setup IP Address successfully message.

Start your web browser, enter the Network Management Card's IP address in the Address text box, and press enter to display the home page. The Network Management Card is now installed on your network.



Note:

1. If your computer has installed firewall software that software may pop up the Windows Security Alert message shown as Figure 7. You need to unblock the “ wsnmpcfg.exe” program before you run the program.



Figure 7. Windows Security Alert.

2. Please refer to the SNMP card hardware manual to obtain the correctly user name and password if you forget user name or password.

When the “SNMP Card Configuration Tool” program is unable to use, it can use the Command Line tool instead of the “SNMP Card Configuration Tool” program to setup IP. Please follow the steps listed below:

## **II. IP setup using Command Line command:**

1. Obtain the MAC address on the label of the Network Management Card. (Each Network Management Card has a unique MAC address).
2. To assign an IP address of 192.168.20.240 in the same subnet as your computer for a Network Management Card, with a MAC address of 000c15000001:  
Run an ARP command:  
`arp -s 192.168.20.240 000c15000001`  
and press Enter to set the IP address.
2. To verify the setting please try to ping the IP address you set:  
`ping 192.168.20.240`

If reply is received, the IP address has been set.

To find an available unused IP address on your network for the Network Management Card, please refer to Appendix 1.

## Appendix 1 IP Address Settings of CyberPower Network Management Card

### Overview

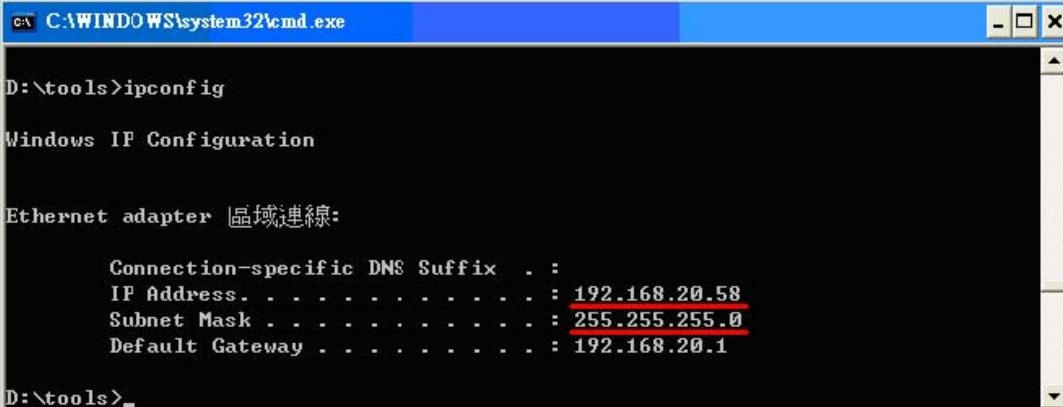
All devices on a computer network need to have an IP address. Each device's IP address is must be unique. In order to assign an IP address to the CyberPower Network Management Card you must determine your network configuration.

**PLEASE NOTE:** You may need to contact your network administrator.

Procedures to find an IP address:

#### 1. Locate the subnet of CyberPower Network Management Card.

One way to determine the range of possible IP addresses is to access the computer. Click on [Start] and select [Run]. Type "command" into the open box and click [OK]. At the Command Prompt type "ipconfig" and press [Enter]. The computer will display network information as shown below:



```
C:\WINDOWS\system32\cmd.exe
D:\tools>ipconfig

Windows IP Configuration

Ethernet adapter 區域連線:

    Connection-specific DNS Suffix  . : 
    IP Address. . . . .                : 192.168.20.58
    Subnet Mask . . . . .              : 255.255.255.0
    Default Gateway . . . . .          : 192.168.20.1

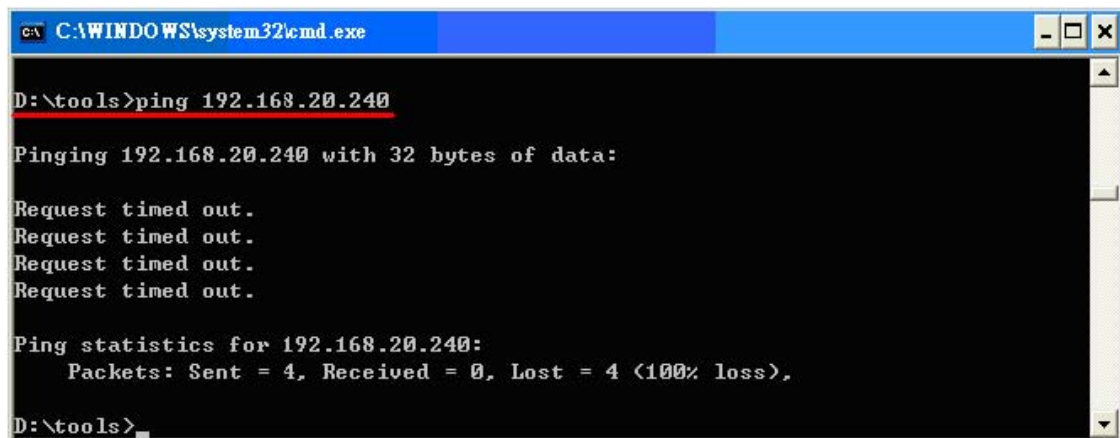
D:\tools>
```

#### 2. Select an IP Address for CyberPower Network Management Card

Make sure the IP Addresses for the computer and the Network Management Card belong to the same subnet. The IP Addresses for Network Management Card could be 192.168.20.\* (\* hereafter represents any number between 1 and 255). Similarly, if the Subnet Mask is 255.255.0.0, the IP Address for Network Management Card could be set up as 192.168.\*.\*.

To ensure there is no other equipment connected to the network using the same IP Address, you could run a command line "Ping 192.168.20.240" at the command prompt when the IP Address you would like to set is 192.168.20.240.

If the response is presented as below, the IP address is not used yet and available for CyberPower Network Management Card.



```
C:\WINDOWS\system32\cmd.exe
D:\tools>ping 192.168.20.240

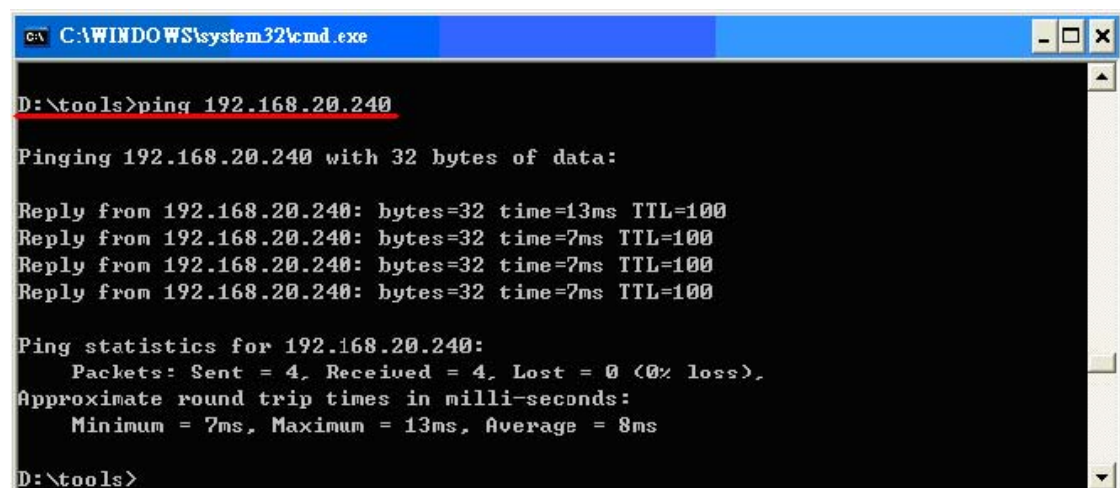
Pinging 192.168.20.240 with 32 bytes of data:

Request timed out.
Request timed out.
Request timed out.
Request timed out.

Ping statistics for 192.168.20.240:
    Packets: Sent = 4, Received = 0, Lost = 4 (100% loss),

D:\tools>
```

If the response is shown as below, the IP address is already in use by other equipment. Try another IP address until an available address is found.



```
C:\WINDOWS\system32\cmd.exe
D:\tools>ping 192.168.20.240

Pinging 192.168.20.240 with 32 bytes of data:

Reply from 192.168.20.240: bytes=32 time=13ms TTL=100
Reply from 192.168.20.240: bytes=32 time=7ms TTL=100
Reply from 192.168.20.240: bytes=32 time=7ms TTL=100
Reply from 192.168.20.240: bytes=32 time=7ms TTL=100

Ping statistics for 192.168.20.240:
    Packets: Sent = 4, Received = 4, Lost = 0 (0% loss),
    Approximate round trip times in milli-seconds:
        Minimum = 7ms, Maximum = 13ms, Average = 8ms

D:\tools>
```



## Free Manuals Download Website

<http://myh66.com>

<http://usermanuals.us>

<http://www.somanuals.com>

<http://www.4manuals.cc>

<http://www.manual-lib.com>

<http://www.404manual.com>

<http://www.luxmanual.com>

<http://aubethermostatmanual.com>

Golf course search by state

<http://golfingnear.com>

Email search by domain

<http://emailbydomain.com>

Auto manuals search

<http://auto.somanuals.com>

TV manuals search

<http://tv.somanuals.com>