

Before you begin...

Make sure that any existing Firewall Software/Devices are disabled and/or shutdown before beginning installation of your new D-Link DI-704P Broadband Router.

1

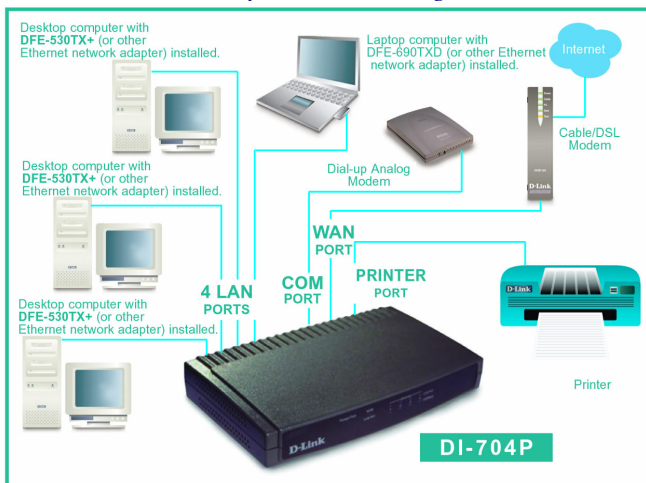
Contents of Package

- DI-704P Broadband Router with Print Server
- User's Manual
- Quick Install Guide
- Power Adapter
- CAT-5 UTP Cable
- Power Cord

2

Connecting the DI-704P Ethernet Broadband Router to your network

When you have completed the steps in this installation guide, your connected network may look something like this:



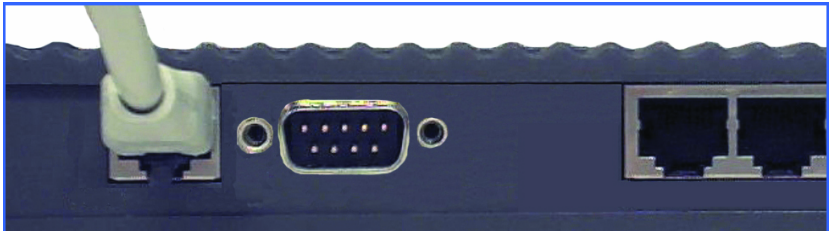
Connecting the DI-704P Ethernet Broadband Router to your network

First, plug in the **power supply** as shown. Plug the other end of the power supply into the power source. Flip the **POWER** toggle switch to the **ON** position.

(During a self-test phase, the indicator lights will flash briefly. At the end of the self-test, the M1 indicator light will flash continuously to indicate normal operation.)

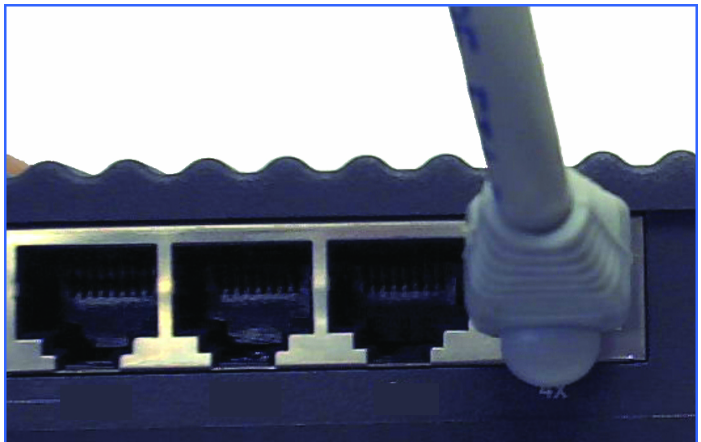


Next, connect the **WAN** port to the **Cable** or **DSL** modem using an Ethernet cable.



Using CAT5 UTP cable, connect each computer that is equipped with an Ethernet adapter to one of the **four Ethernet LAN** ports on the DI-704P.

The LED for the specific Local Ethernet Port will light up to indicate connection.



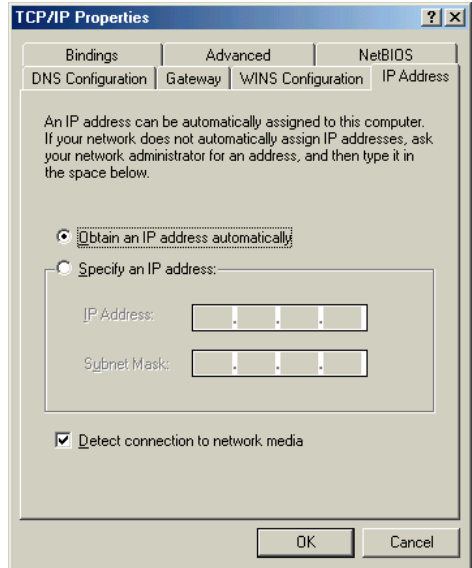
3

Checking the IP Address

Make sure that **TCP/IP** protocol has been installed in your computer.

Next, set the **TCP/IP** protocol to **“Obtain an IP Address automatically”** by doing the following:

- Go to **Start>Settings**
- Select **“Control Panel”**
- **Double-click** the **“Network”** icon
- Select the **TCP/IP** line that includes the name of your network adapter card, under the **“Configuration”** tab in the **“Network”** window
- **Click on “Properties”** in this window
- The window at the right will appear
- Select the **“IP Address”** tab as shown
- Choose **“Obtain an IP address automatically”**
- **Click “OK”**



*Note: For information on setting the IP address of your computer manually (a static IP address,) please see **Appendix A** in this guide.*

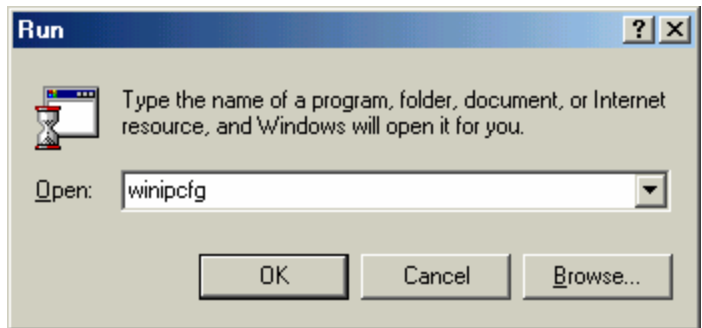
Next, find your **IP Address** by doing the following:

For Windows 98/ME:

- Go to **Start>Run**
- Type in **“winipcfg”**
- **Click “OK”**

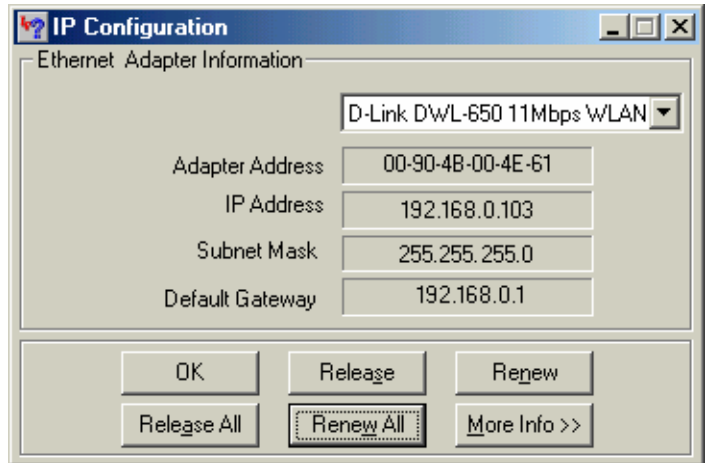
For Windows 2000:

- **Go to Start>Run**
- **Type “cmd”**
- **When the prompt appears, type “ipconfig”**
- **Hit “Enter”**
- The window displayed on the next page will appear



Checking the IP Address

- Use the “pull-down menu” on this screen to display the Ethernet card that is installed in your computer and connected to the DI-704P. The IP Address (for the Ethernet network adapter) that appears in this window must be between **192.168.0.2** and **192.168.0.254** in order to configure the DI-704P.



- If the IP Address is **not** in that range, please do the following: Click on “**Release All**” and “**Renew All**” to obtain a “**Dynamic IP Address**” from the DI-704P within the range of **192.168.0.100** to **192.168.0.199**.

4

Configuring the DI-704P with the Web browser

Note: Please disable any proxy server setting for the web browser.

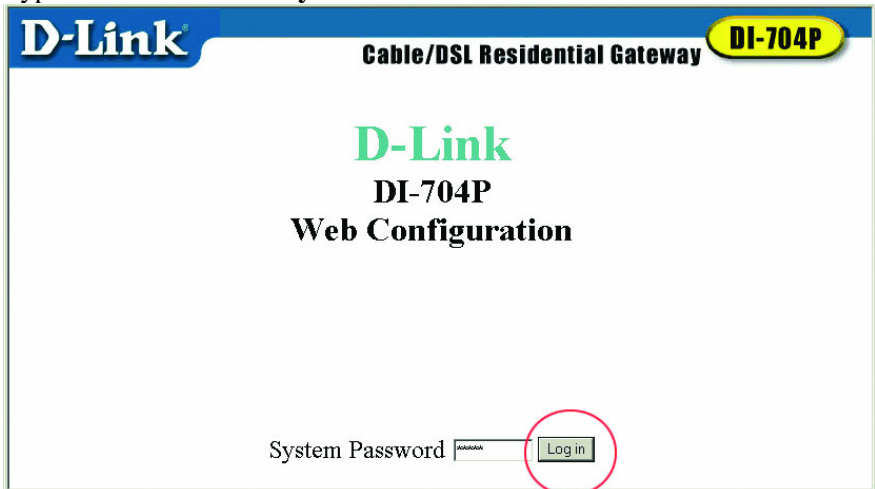
Open the web browser, and type in the DI-704P’s IP Address.

For example, type **http://192.168.0.1** into the “Location” or “Address” field.
Hit “**Enter**”



Configuring the DI-704P with the Web browser

Type “admin” in the “System Password” field.



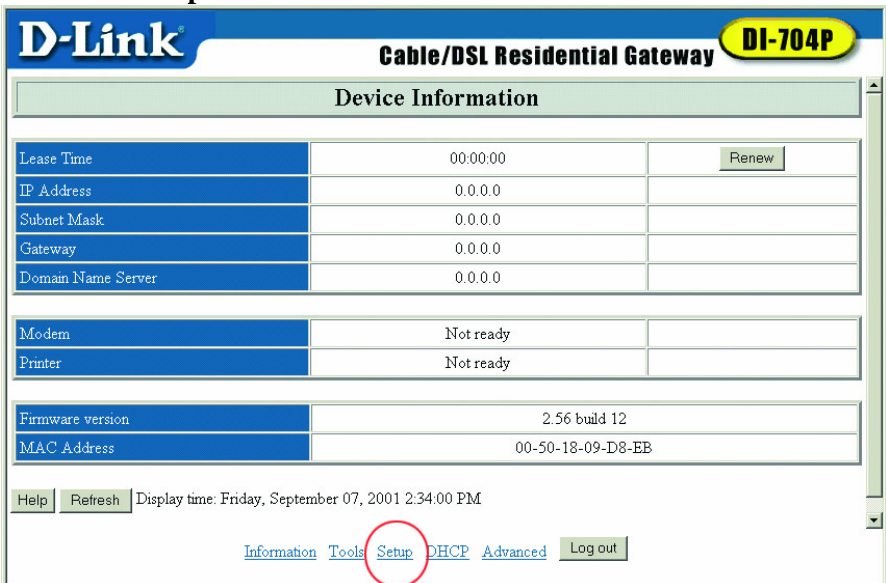
D-Link Cable/DSL Residential Gateway **DI-704P**

D-Link
DI-704P
Web Configuration

System Password

Click on “Log in”

Click on “Setup”



D-Link Cable/DSL Residential Gateway **DI-704P**

Device Information

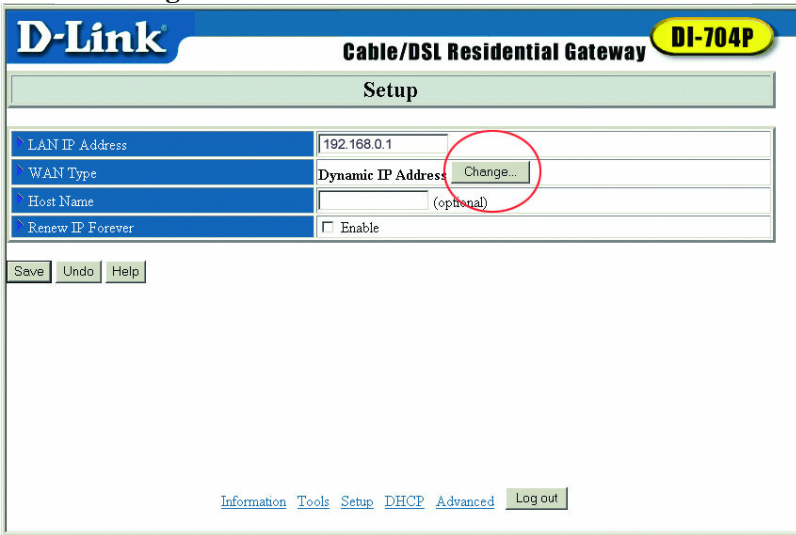
Lease Time	00:00:00	<input type="button" value="Renew"/>
IP Address	0.0.0.0	
Subnet Mask	0.0.0.0	
Gateway	0.0.0.0	
Domain Name Server	0.0.0.0	
Modem	Not ready	
Printer	Not ready	
Firmware version	2.56 build 12	
MAC Address	00-50-18-09-D8-EB	

Display time: Friday, September 07, 2001 2:34:00 PM

[Information](#) [Tools](#) [Setup](#) [DHCP](#) [Advanced](#)

Configuring the DI-704P with the Web browser

Click “Change”



D-Link Cable/DSL Residential Gateway **DI-704P**

Setup

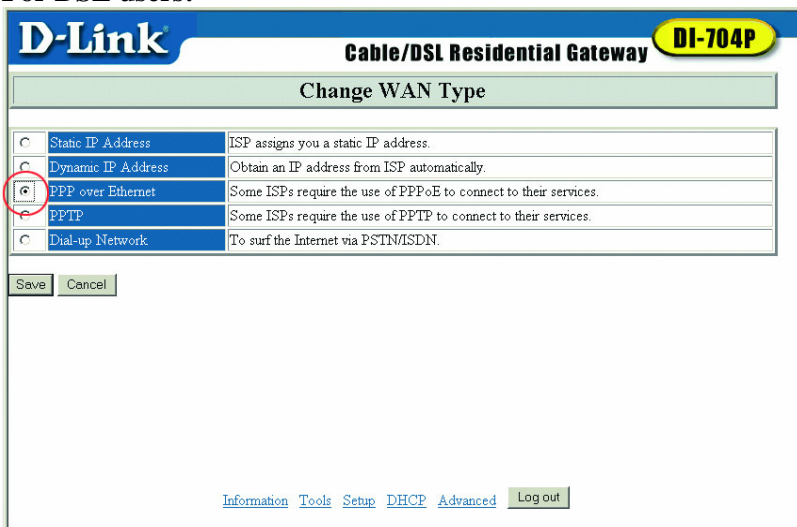
LAN IP Address	192.168.0.1
WAN Type	Dynamic IP Address Change...
Host Name	(optional)
Renew IP Forever	<input type="checkbox"/> Enable

Save Undo Help

[Information](#) [Tools](#) [Setup](#) [DHCP](#) [Advanced](#) [Log out](#)

(Please see separate instructions below for DSL and Cable users.)

For DSL users:



D-Link Cable/DSL Residential Gateway **DI-704P**

Change WAN Type

<input type="radio"/> Static IP Address	ISP assigns you a static IP address.
<input type="radio"/> Dynamic IP Address	Obtain an IP address from ISP automatically.
<input checked="" type="radio"/> PPP over Ethernet	Some ISPs require the use of PPPoE to connect to their services.
<input type="radio"/> PPTP	Some ISPs require the use of PPTP to connect to their services.
<input type="radio"/> Dial-up Network	To surf the Internet via PSTN/ISDN.

Save Cancel

[Information](#) [Tools](#) [Setup](#) [DHCP](#) [Advanced](#) [Log out](#)

Select “**PPP over Ethernet**” if you are using a PPPoE client to connect to your DSL provider (contact your DSL provider if you are uncertain.)

Configuring the DI-704P with the Web browser

For DSL users (continued):

Enter the **PPPoE Account and Password** that your ISP assigned to you. Leave the password field blank if you do not want to change the password. Input the **PPPoE Service Name** if your ISP requires it. Set the **Maximum Idle Time**. (Entering a value of “0” will disable this feature.)

D-Link Cable/DSL Residential Gateway **DI-704P**

Setup

LAN IP Address	192.168.0.1
WAN Type	PPP over Ethernet <input type="button" value="Change..."/>
PPPoE Account	<input type="text"/>
PPPoE Password	<input type="text"/>
PPPoE Service Name	<input type="text"/> (optional)
Assigned IP Address	0.0.0.0 (optional)
Maximum Idle Time	0 seconds
Primary DNS	0.0.0.0
Secondary DNS	0.0.0.0

Saved! The change doesn't take effective until rebooting!

[Information](#) [Tools](#) [Setup](#) [DHCP](#) [Advanced](#)

Click “Save.”
Restart the computer.

Configuring the DI-704P with the Web browser

For Cable Users:

Select “Dynamic IP Address.”

D-Link Cable/DSL Residential Gateway **DI-704P**

Change WAN Type

<input type="radio"/>	Static IP Address	ISP assigns you a static IP address.
<input checked="" type="radio"/>	Dynamic IP Address	Obtain an IP address from ISP automatically.
<input type="radio"/>	PPP over Ethernet	Some ISPs require the use of PPPoE to connect to their services.
<input type="radio"/>	PPTP	Some ISPs require the use of PPTP to connect to their services.
<input type="radio"/>	Dial-up Network	To surf the Internet via PSTN/ISDN.

[Information](#) [Tools](#) [Setup](#) [DHCP](#) [Advanced](#)

Click “Save.”

D-Link Cable/DSL Residential Gateway **DI-704P**

Setup

LAN IP Address	192.168.0.1
WAN Type	Dynamic IP Address <input type="button" value="Change..."/>
Host Name	@home (optional)
Renew IP Forever	<input checked="" type="checkbox"/> Enable

Enter the “**Host Name**” given to you by your cable provider (for example, “@Home.”)

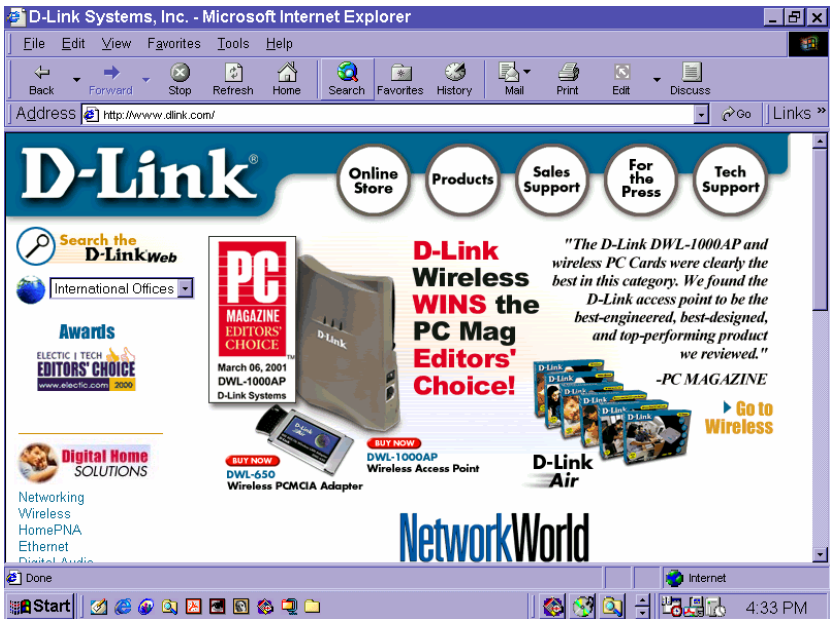
For information on configuring a back-up dial-up modem, please see the “Configuration” section of your User’s Manual.

Click “Save” after you have input the information.

Restart the computer.

5

Checking the Connection to the Internet



To check the connection, open the web browser and go to your favorite website.

If you are unable to browse, please do the following:

1. Refer to Appendix B to check your connection.
2. Use “Help” on the Main Menu.
3. Refer to the troubleshooting section in the user’s manual.

Your DI-704P Ethernet Broadband Router is now ready to use. Please proceed to the **“Print Server Installation”** D-Link instructions that follow if you plan to use the Print Server feature.

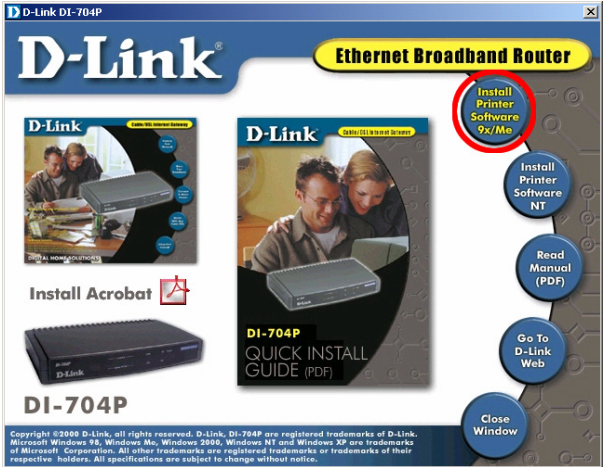
6

Print Server Installation (optional)

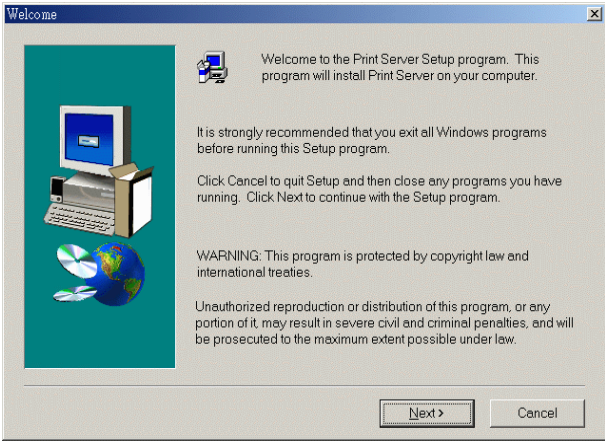
NOTE: Installing the Print Server software is only necessary if you plan to use the Print Server function of the D-Link DI-704P. If you choose to use the print server function, plug the printer cable from your printer into the printer port on the DI-704P, if you have not already done so.

Turn “ON” the computer. Insert the Print Server installation CD into the CD-ROM drive. The following screen will appear. If the CD does not automatically run, then click on “install.exe” on the CD.

Click on “Install Printer Software”



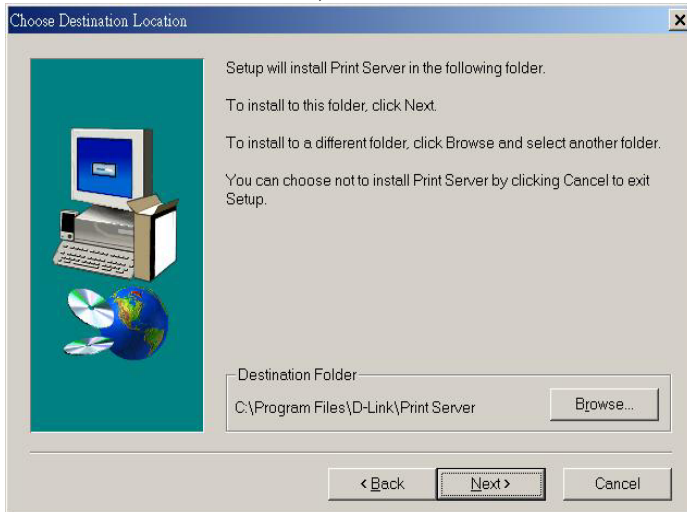
At the “Welcome” screen,



Click “Next”

Print Server Installation

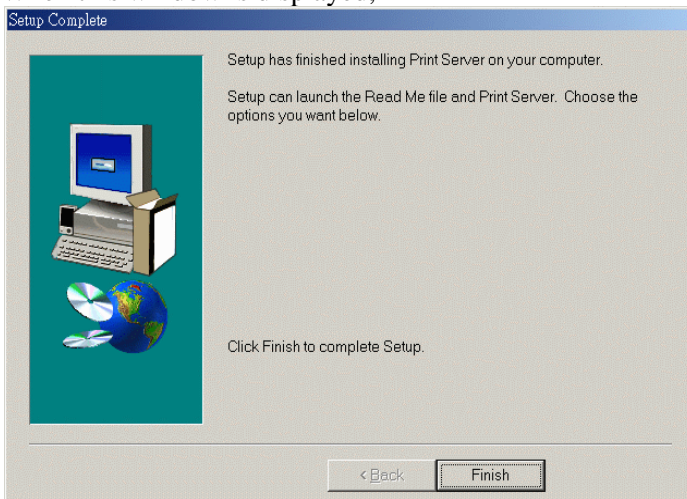
To select the default folder,



Click "Next"

Note: It is recommended that you click "Next" in the above window. However, if necessary, Click "Browse" to select an alternate folder.

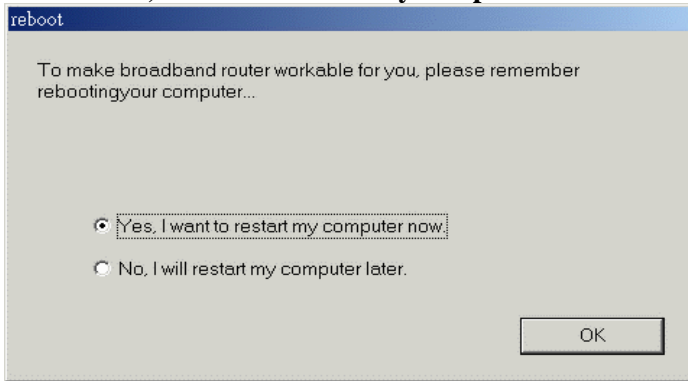
When this window is displayed,



Click "Finish," to complete the Setup.

Print Server Installation

Select “Yes, I want to restart my computer.”



Click “OK”

After the computer has restarted, the Print Server software installation is complete.

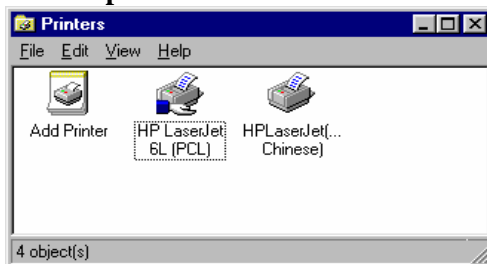
7

Configuring Your Printer

*Note: If your printer is not installed, go to **START>SETTINGS>PRINTERS**. **Double Click** on the “Add Printer” icon. Follow the “Add Printer Wizard.” When requested to specify a port, select “**D-Link LPT Port (Print Server.)**” When setting up the printer, please use the drivers provided by the printer manufacturer. Once you have set up your printer, please continue with the configuration as follows.*

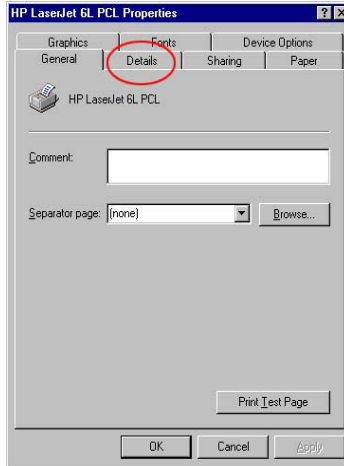
Go to **START>SETTINGS>PRINTERS**

“**Right -Click**” on the printer icon that corresponds to the printer you have connected to the DI-704P and select “**Properties.**”

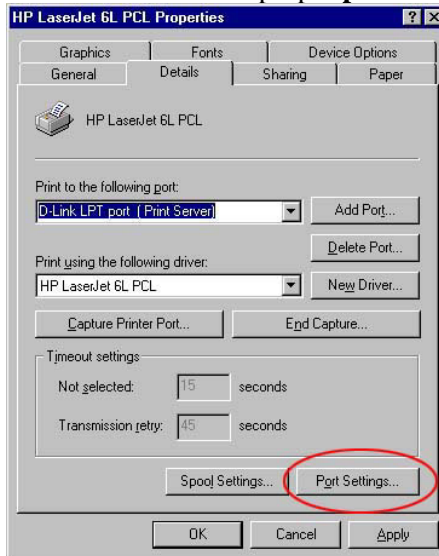


Configuring your printer

Choose the **“Details”** tab.
(*In Windows 2000 or NT, choose the **“Ports”** tab.*)



At the **“Add Port”** pull-down menu, choose **“D-Link LPT port (Print Server)”**.
Please make sure the proper **printer driver** is selected.



Click **“Port Settings.”**
(*For Windows 2000/NT users: Click **“Configure Port.”***)

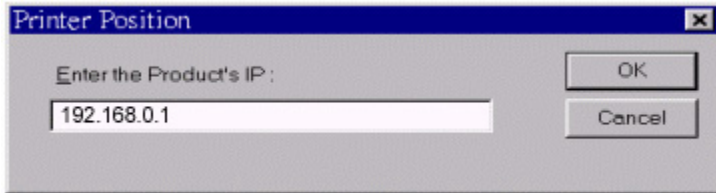
Configuring your printer

Type in the **“IP address”** of the DI-704P.

Click “OK”

In the previous window, make sure the settings are correct.

Click “OK”



You have completed configuring your printer.

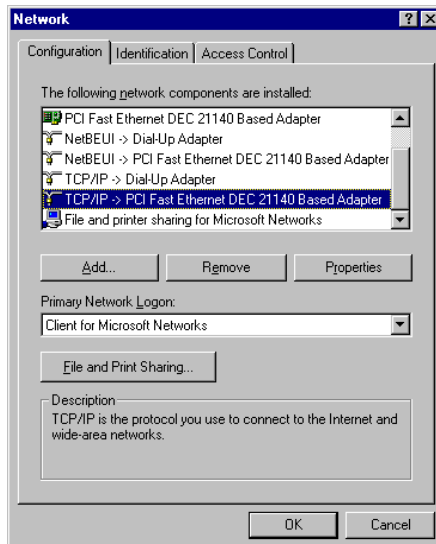
Appendix A: Assigning a Static IP Address

Go to **START>SETTINGS>CONTROL PANEL**

Double-click the **“network”** icon.

Under the **“Configuration”** tab highlight the **“TCP/IP”** line that is associated with your network adapter.

Click on **“Properties”**



Appendix A: Assigning a Static IP Address (cont.)

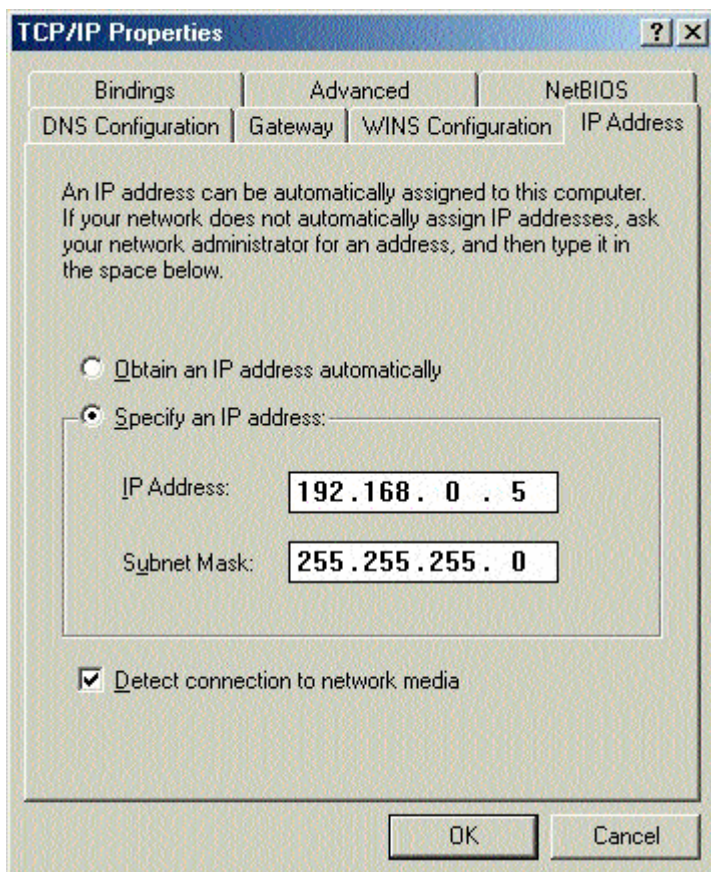
To manually input the IP Address, please do the following:

In the “**TCP/IP Properties**” window, under the “**IP Address**” tab, Select “**Specify an IP address.**”

The default IP Address of this product is **192.168.0.1**

Please use 192.168.0.xxx (where “xxx” is a number between 2 and 99) to input into the “**IP Address**” field. The “**Subnet Mask**” is: 255.255.255.0

Under the “**Gateway**” tab, add the IP address of the DI-704P into the “**New gateway**” field. The default address is 192.168.0.1. **Click** on “**Add.**”



Click “OK” to complete the process.

Appendix B: Checking Your Network Settings

From the desktop, go to

Start>Run

Type “**command**” in the box.

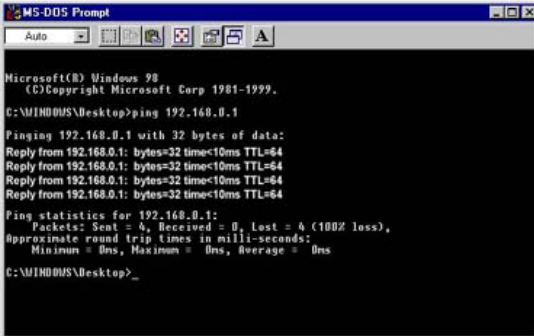
Click “**OK**”

The following MS-DOS Prompt window will appear.

Type “**ping 192.168.0.1**” after the prompt. This is the IP address of the LAN port of the Broadband Router.

Hit “**Enter**”

You have a successful connection if the window displays four replies as shown in the example.



```
MS-DOS Prompt
Auto
Microsoft(R) Windows 98
(C) Copyright Microsoft Corp 1981-1999.
C:\WINDOWS\Desktop>ping 192.168.0.1

Pinging 192.168.0.1 with 32 bytes of data:
Reply from 192.168.0.1: bytes=32 time<10ms TTL=64
Reply from 192.168.0.1: bytes=32 time<10ms TTL=64
Reply from 192.168.0.1: bytes=32 time<10ms TTL=64
Reply from 192.168.0.1: bytes=32 time<10ms TTL=64

Ping statistics for 192.168.0.1:
    Packets: Sent = 4, Received = 0, Lost = 4 (100% loss),
    Approximate round trip times in milli-seconds:
        Minimum = 0ms, Maximum = 0ms, Average = 0ms
C:\WINDOWS\Desktop>_
```

Contacting Technical Support

You can find the most recent software and user documentation on the **D-Link** website. **D-Link** provides free technical support for customers within the United States for the duration of the warranty period on this product.

U.S. customers can contact **D-Link** technical support through our web site, by e-mail, or by phone.

United States technical support is available Monday through Friday from 6:00 a.m. to 6:00 p.m. (PST.)

Web: <http://www.dlink.com>

Email: support@dlink.com

Phone: 949-788-0805 (option #4)

If you are a customer residing outside of the United States, please refer to the list of **D-Link** locations that is included in the User’s manual.

D-Link[®]
Building Networks for People
Printed in Taiwan

Free Manuals Download Website

<http://myh66.com>

<http://usermanuals.us>

<http://www.somanuals.com>

<http://www.4manuals.cc>

<http://www.manual-lib.com>

<http://www.404manual.com>

<http://www.luxmanual.com>

<http://aubethermostatmanual.com>

Golf course search by state

<http://golfingnear.com>

Email search by domain

<http://emailbydomain.com>

Auto manuals search

<http://auto.somanuals.com>

TV manuals search

<http://tv.somanuals.com>