

D-Link Quick Installation Guide

This product can be set up using any current web browser, i.e., Internet Explorer 6 or Netscape Navigator 6.2.3.



DWL-810+

D-Link AirPlus™
Ethernet-to-Wireless Bridge

Before You Begin

You must have at least the following:

- An Ethernet-enabled device, such as a game console, laptop or desktop computer, network printer or set-top box that will connect to the DWL-810+

Check Your Package Contents



DWL-810+ Ethernet-to-Wireless Bridge



CD-ROM (Manual and Warranty)



Ethernet (CAT5 UTP) Cable



5V DC 2.5A Power Adapter



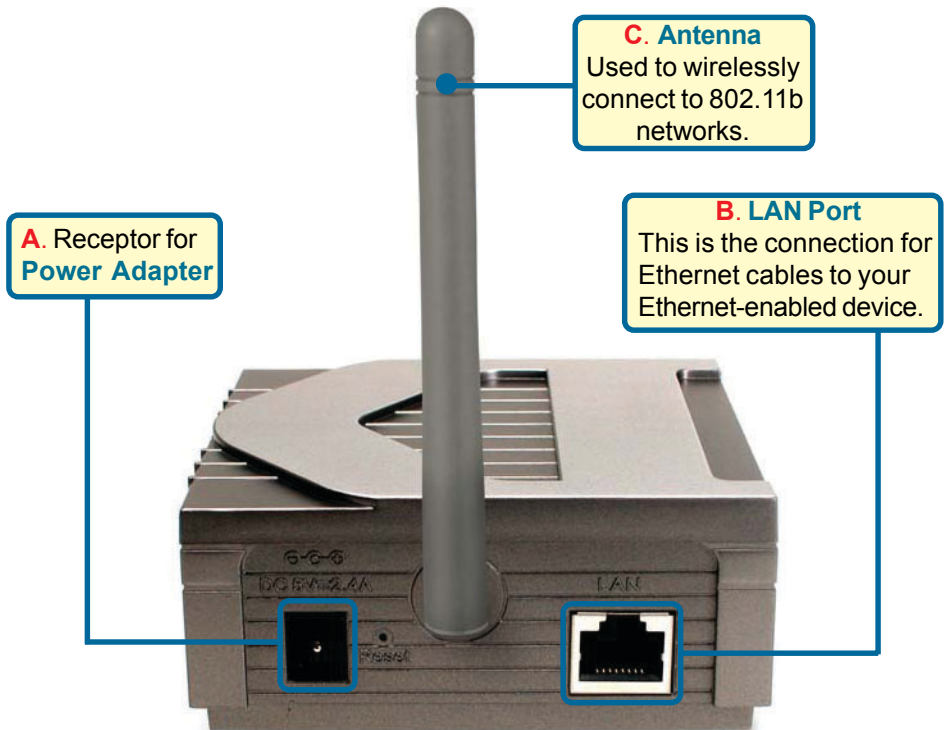
Using a power supply with a different voltage rating will damage this product and void its warranty.

If any of the above items are missing, please contact your reseller.

1

Connecting the DWL-810+ to your Ethernet-enabled device

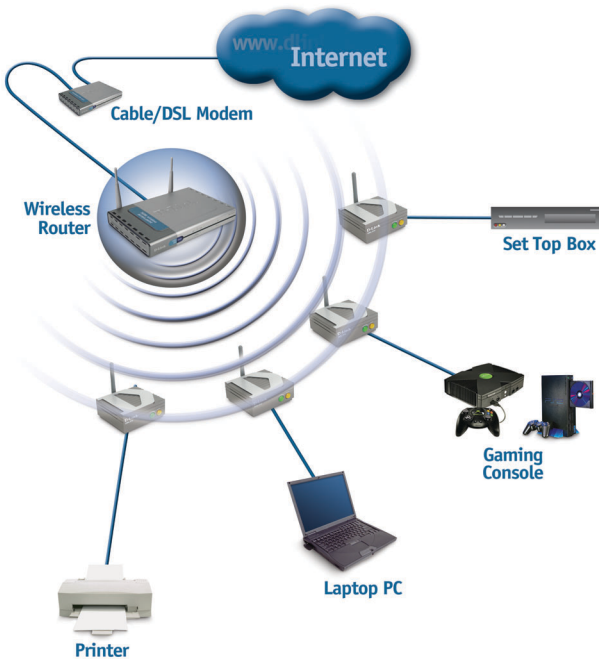
- A.** First, connect the power adapter to the **receptor** at the back panel of the DWL-810+ and then plug the other end of the power adapter to a wall outlet or power strip. The Power LED will turn **ON** to indicate proper operation.
- B.** Insert one end of an Ethernet cable (included) to the Ethernet port on the back panel of the DWL-810+ and connect the other end to the Ethernet port located on the device (e.g., a Set Top Box, Gaming Console, laptop or desktop computer, or network printer.) The LED light will blink when there is data transfer through the wireless connection. (Note: The Ethernet port on the DWL-810+ is Auto-MDI/MDIX. Meaning you can use a straight-through or crossover cable to the Ethernet Port.)
- C.** The antenna is used by the DWL-810+ to connect to other 802.11b wireless devices.



2

Connecting the DWL-810+ in Infrastructure Mode

Setup #1

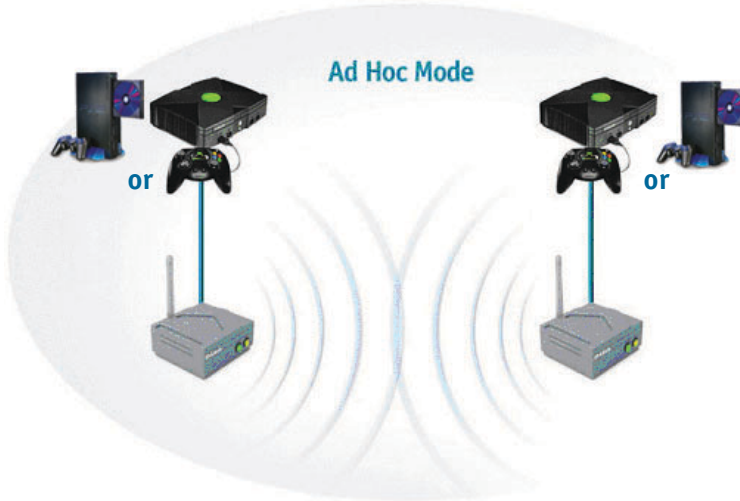


Connect an Ethernet cable from the DWL-810+ to your Ethernet enabled: Desktop PC, Laptop PC, Set-Top-Box, or Gaming Console.

3

Connecting the DWL-810+ in Ad-Hoc Mode

Setup #2



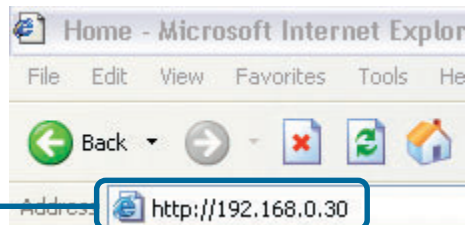
4

Web-based Configuration

Before You Begin the Configuration

- It's best to use a computer (with an Ethernet adapter) that is connected to a switch for configuring the DWL-810+. (**Note:** You also have the option of connecting the DWL-810+ directly to the computer that will be used for configuration). The default IP address for the DWL-810+ is **192.168.0.30** with a Subnet Mask of **255.255.255.0**. You will need to assign your computer a Static IP address within the same range as the DWL-810+'s IP address for the purpose of configuring the DWL-810+. **See the Manual on the CD-ROM if you need assistance in assigning a Static IP address for your network adapter.**

Open your Web browser and type "**http://192.168.0.30**" into the URL address box. Then press the **Enter** or **Return** key.



4

Continued...

The logon pop-up screen will appear.

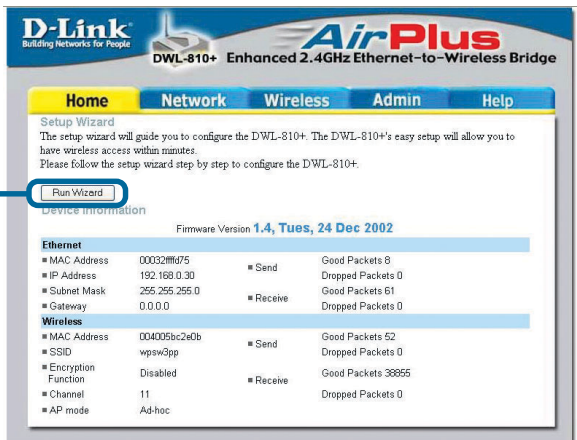
Type **“admin”** for the username and leave the password field blank.

Click **OK**



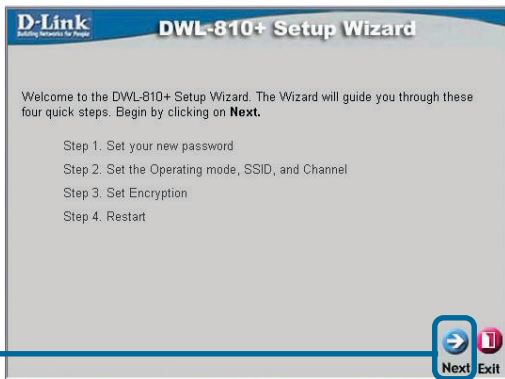
Once you have logged in, the **Home** screen will appear.

Click **Run Wizard**



You will see the following screens.

Click **Next**



4

Continued...

Step 1 - Set up your new password. You have the option to establish a password.

D-Link
Building Networks for People

DWL-810+ Setup Wizard

Set Password

You may change the **admin** account password by entering in a new password. Click **Next** to continue.

New Password:

Confirm Password:

Back Next Exit

Click **Next**

Step 2 - Wireless Setup

The default wireless settings are:

SSID = **default**

Channel = **6**

Operating Mode = **Infrastructure**

Click **Site Survey** to select a wireless network or you can change the settings manually to match an existing wireless network.



For Set Up #2 select Ad-hoc as the operating mode.

D-Link
Building Networks for People

DWL-810+ Setup Wizard

Set Wireless LAN Connection

Choose the Operating mode and enter in the SSID name and Channel number to be used for the Wireless Access Point. Click **Next** to continue.

Operating Mode: Ad-hoc Infrastructure

SSID: default

Remote AP MAC: 004001300825 Site Survey

Channel: 6 (for ad-hoc mode only)

Back Next Exit

Click **Next**

Step 3 - Encryption

The DWL-810+ is capable of three levels of wireless encryption - 64-bit, 128-bit, and 256-bit. **By default the encryption is disabled.** You can change the encryption settings for more secure wireless communication.

D-Link
Building Networks for People

DWL-810+ Setup Wizard

Setup Encryption

If you wish to use encryption, enable it here and enter the encryption Key values. Click **Next** to continue.

Wep: Enabled Disabled

Encryption: 64Bit

WEP Mode: HEX

Key1:

Key2:

Key3:

Key4:

Back Next Exit

Click **Next**

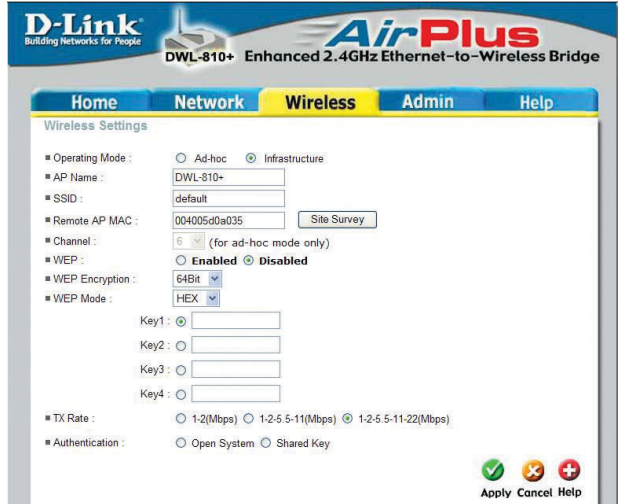


You have completed the Configuration of the DWL-810+!

Appendix

Xbox Setup

Step 1 - Please refer to Step 4 for configuring and modifying the wireless settings of the DWL-810+

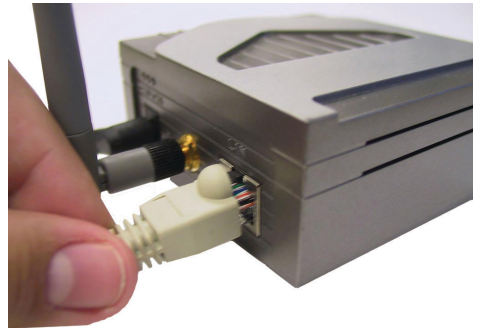


The screenshot shows the web interface for the D-Link DWL-810+ Enhanced 2.4GHz Ethernet-to-Wireless Bridge. The interface has a blue header with the D-Link logo and the product name. Below the header are navigation tabs: Home, Network, Wireless (selected), Admin, and Help. The main content area is titled "Wireless Settings" and contains the following configuration options:

- Operating Mode: Ad-hoc Infrastructure
- AP Name: DWL-810+
- SSID: default
- Remote AP MAC: 004005d0a035 [Site Survey]
- Channel: 6 (for ad-hoc mode only)
- WEP: Enabled Disabled
- WEP Encryption: 64Bit
- WEP Mode: HEX
- Key1:
- Key2:
- Key3:
- Key4:
- TX Rate: 1-2(Mbps) 1-2.5-5-11(Mbps) 1-2.5-5-11-22(Mbps)
- Authentication: Open System Shared Key

At the bottom right, there are three icons: a green checkmark, a red X, and a red plus sign, with the labels "Apply", "Cancel", and "Help" respectively.

Step 2 - Connect an Ethernet cable from the DWL-810+ to the Ethernet port on the back of your Xbox.

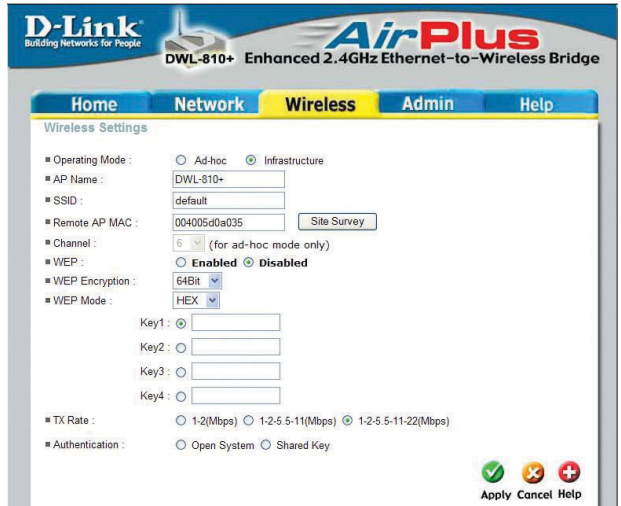


In order to connect to the Xbox Live service, you will need to have the proper Xbox Live equipment and account.

Appendix

PlayStation 2 Setup

Step 1 - Please refer to Step 4 for configuring and modifying the wireless settings of the DWL-810+

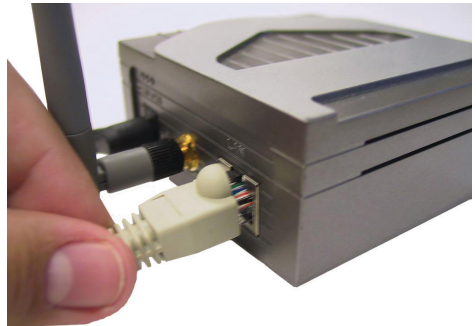


The screenshot shows the D-Link DWL-810+ web interface. The top navigation bar includes 'Home', 'Network', 'Wireless', 'Admin', and 'Help'. The 'Wireless' tab is selected, displaying the 'Wireless Settings' page. The settings are as follows:

- Operating Mode: Ad-hoc Infrastructure
- AP Name: DWL-810+
- SSID: default
- Remote AP MAC: 004005d0a035 [Site Survey]
- Channel: 6 (for ad-hoc mode only)
- WEP: Enabled Disabled
- WEP Encryption: 64Bit
- WEP Mode: HEX
- Key 1: []
- Key 2: []
- Key 3: []
- Key 4: []
- TX Rate: 1-2(Mbps) 1-2.5-5-11(Mbps) 1-2.5-5-11-22(Mbps)
- Authentication: Open System Shared Key

At the bottom right, there are three buttons: 'Apply' (with a green checkmark), 'Cancel' (with a red X), and 'Help' (with a red plus sign).

Step 2 - Connect an Ethernet cable from the DWL-810+ to the Ethernet port on the back of your PlayStation 2.



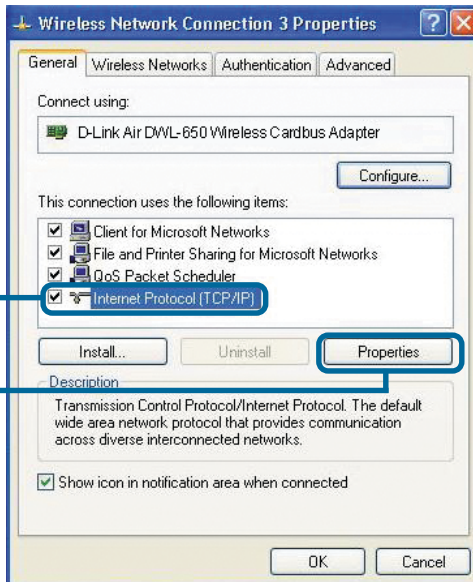
Appendix

Assigning a Static IP Address in Windows

To assign a Static IP Address to the laptop or computer that you are using to configure the DWL-810+, please do the following:

Note: The following screens are taken using Windows XP. Your screens may look similar.

Go to **Start** > Double-click on **Control Panel** > Double-click on **Network Connections** > Right-click on **Local Area Connections** > Click **Properties**

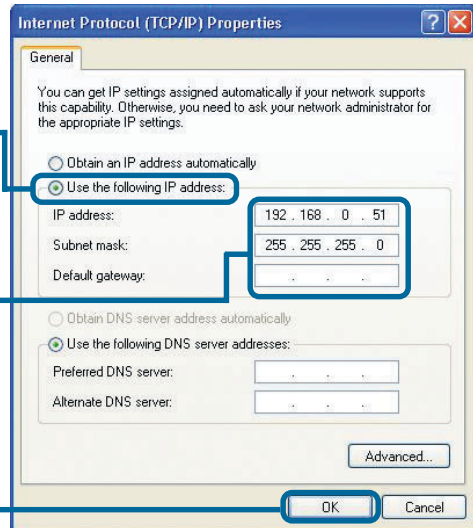


Highlight **Internet Protocol (TCP/IP)**

Click **Properties**

Select **Use the following IP address** in the Internet Protocol (TCP/IP) Properties window

Input your **IP address and subnet mask**. (The IP Address must be within the same range as the DWL-810+. The IP Address of the DWL-810+ is **192.168.0.30**. You can assign 192.168.0.51 for your computer. **No two computers can have the same IP Address**. Assign a subnet mask of **255.255.255.0**.)



Click **OK**

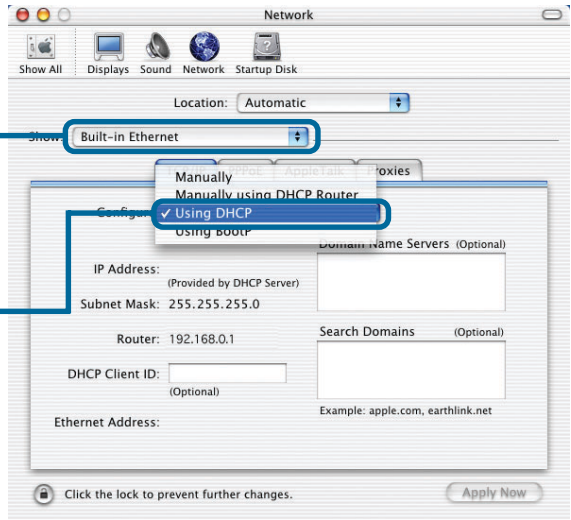
For Apple Macintosh OS X:

Go to the Apple Menu Click on **Network** and Select **System Preferences**



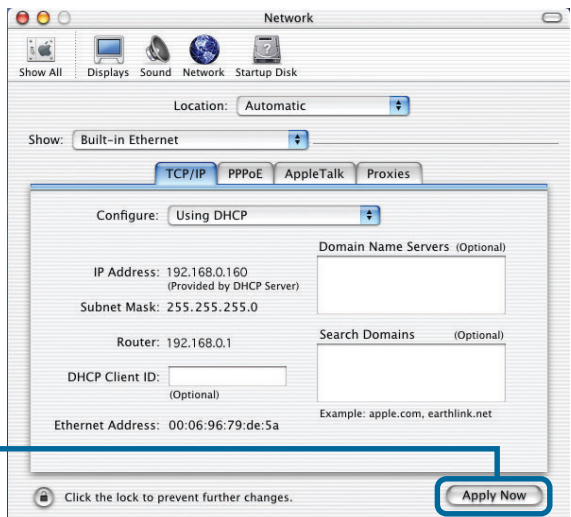
Click on **Network**

Select **Built in Ethernet** in the Show pull-down menu



Select **Using DHCP** in the Configuration pull-down menu

The IP address information, the Subnet Mask, the Router's IP address and the Ethernet adapter address will appear



Click on **Apply Now**

Technical Support

You can find software updates and user documentation on the D-Link website.

D-Link provides free technical support for customers within the United States and within Canada for the duration of the warranty period on this product.

U.S. and Canadian customers can contact D-Link technical support through our website, or by phone.

Tech Support for customers within the United States:

D-Link Technical Support over the Telephone:

(877) 453-5465

24 hours a day, seven days a week.

D-Link Technical Support over the Internet:

<http://support.dlink.com>

email:support@dlink.com

Tech Support for customers within Canada:

D-Link Technical Support over the Telephone:

(800) 361-5265

Monday to Friday 8:30am to 9:00pm EST

D-Link Technical Support over the Internet:

<http://support.dlink.ca>

email:support@dlink.ca



Free Manuals Download Website

<http://myh66.com>

<http://usermanuals.us>

<http://www.somanuals.com>

<http://www.4manuals.cc>

<http://www.manual-lib.com>

<http://www.404manual.com>

<http://www.luxmanual.com>

<http://aubethermostatmanual.com>

Golf course search by state

<http://golfingnear.com>

Email search by domain

<http://emailbydomain.com>

Auto manuals search

<http://auto.somanuals.com>

TV manuals search

<http://tv.somanuals.com>