

# D-Link Quick Installation Guide

This product can be set up using any current web browser, i.e., Internet Explorer 5x, Netscape Navigator 4x.



**DWL-900AP+**  
D-Link AirPlus™  
Wireless Access Point

## Before You Begin

It's best to use a computer (with an Ethernet adapter) that is connected to a router for configuring the DWL-900AP+. The default IP address for the DWL-900AP+ is **192.168.0.50** with a Subnet Mask of **255.255.255.0**. You will need to assign your computer a Static IP address within the same range as the DWL-900AP+'s IP address for the purpose of configuration of the DWL-900AP+. **See the Manual on the CD-ROM if you need assistance in assigning a Static IP address for your network adapter.**

## Check Your Package Contents

These are the items included with your DWL-900AP+ purchase:



- **DWL-900AP+ Wireless Access Point**



- **CD-ROM (containing Manual and Warranty)**



- **Ethernet (CAT5 UTP/Straight Through) Cable**



- **5V DC, 2A Power Adapter**



Using a power supply with a different voltage rating will damage and void the warranty for this product.

If any of the above items are missing, please contact your reseller.

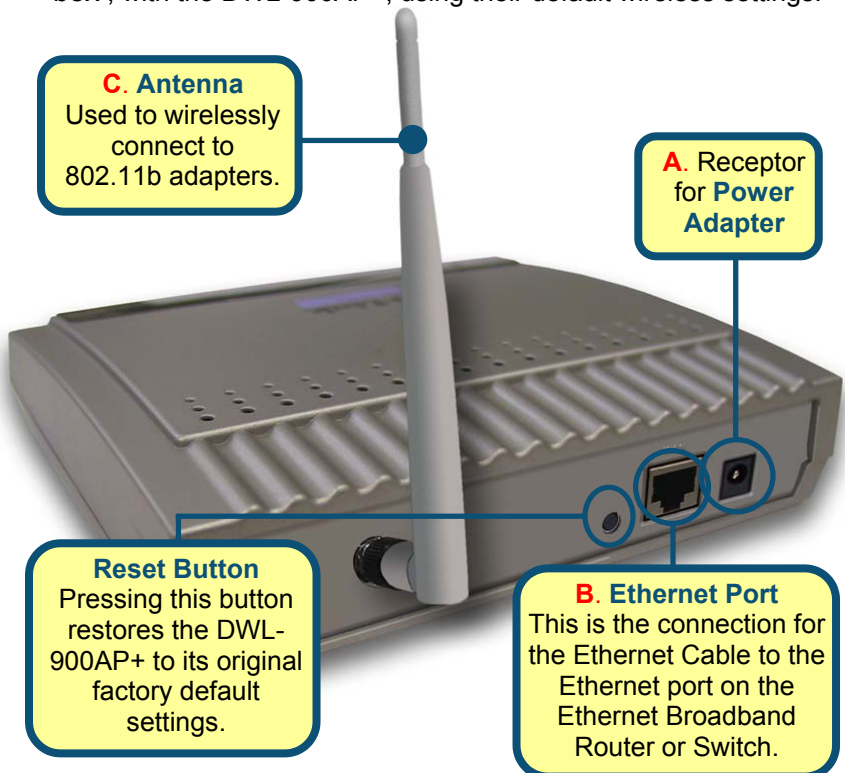
# 1

## Connecting The DWL-900AP+ Wireless Access Point To Your Network

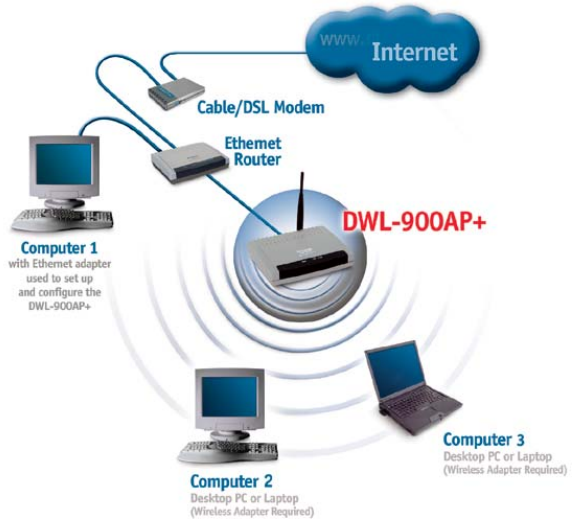
- A.** First, connect the power adapter to the **receptor** at the back panel of the DWL-900AP+ and then plug the other end of the power adapter to a wall outlet or power strip. The Power LED will turn **ON** to indicate proper operation.
- B.** Using a Straight-Through Ethernet cable, insert one end of the cable to the **Ethernet port** on the back panel of the DWL-900AP+ and the other end of the cable to an **Ethernet Broadband Router** (i.e., D-Link DI-604) or **Switch** (i.e., D-Link DSS-5+). Note: The router or switch must be connected to the computer to be used to configure the DWL-900AP+. The Link LED light will illuminate to indicate a proper Ethernet connection.
- C.** Computers with 802.11b wireless adapters can connect to the DWL-900AP+. The DWL-650+ AirPlus Wireless Cardbus Adapter and the DWL-520+ AirPlus Wireless PCI Adapter will connect, out of the box, with the DWL-900AP+, using their default wireless settings.



When connecting the DWL-900AP+ Wireless Access Point to an Ethernet Adapter in a computer, use a Cross-Over Ethernet cable.

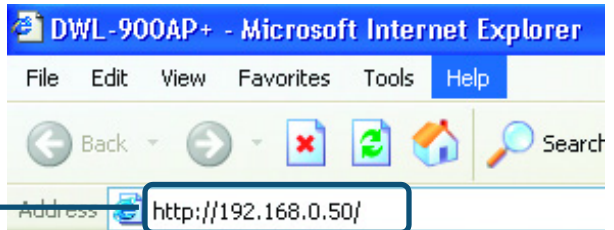


When you have completed the steps in this *Quick Installation Guide*, your connected network should look similar to this:



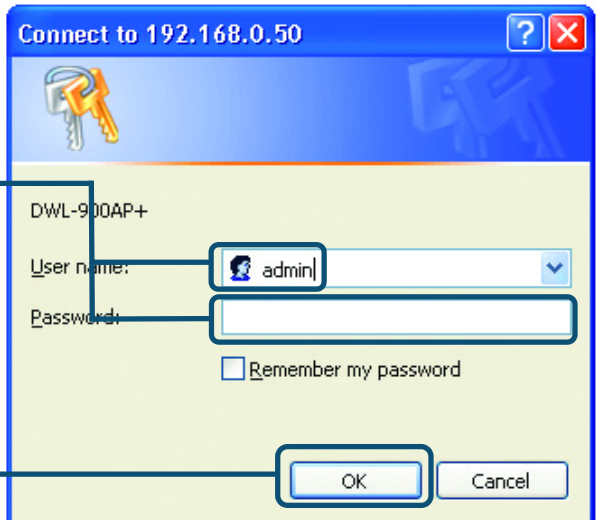
## 2 Using The Setup Wizard

Open your Web browser and type **"http://192.168.0.50"** into the URL address box. Then press the **Enter** or **Return** key.



The logon pop-up screen will appear.

Type **"admin"** for the username and leave the password field blank.

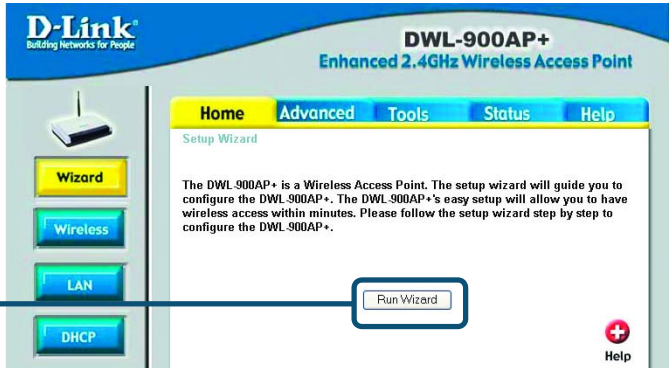


Click **OK**

# 2

## Using The Setup Wizard (continued)

Once you have logged in, the **Home** screen will appear.



Click **Run Wizard**

You will see the following screens.



Click **Next**

**Step 1 - Set up your new password.** You have the option to establish a password.

D-Link Building Networks for People

## DWL-900AP+ Setup Wizard

### Set Password

You may change the **admin** account password by entering in a new password. Click **Next** to continue.

Password

Verify Password

Back Next Exit

Click **Next**

### Step 2 - Wireless Setup

The default wireless settings are:  
SSID = **default**  
Channel = **6**  
You can change these settings to match an existing wireless network.

D-Link Building Networks for People

## DWL-900AP+ Setup Wizard

### Set Wireless LAN Connection

Enter in the SSID name and Channel number to be used for the Wireless Access Point. Click **Next** to continue.

SSID

Channel

Back Next Exit

Click **Next**

### Step 3 - Encryption

The DWL-900AP+ is capable of three levels of wireless encryption - 64-bit, 128-bit, and 256-bit. **By default the encryption is disabled.** You can change the encryption settings for more secure wireless communication.

D-Link Building Networks for People

## DWL-900AP+ Setup Wizard

If you wish to use encryption,enable it here and enter the encryption Key Values.Click **Next** to continue.

Wep  Enabled  Disabled

Wep encryption

Key

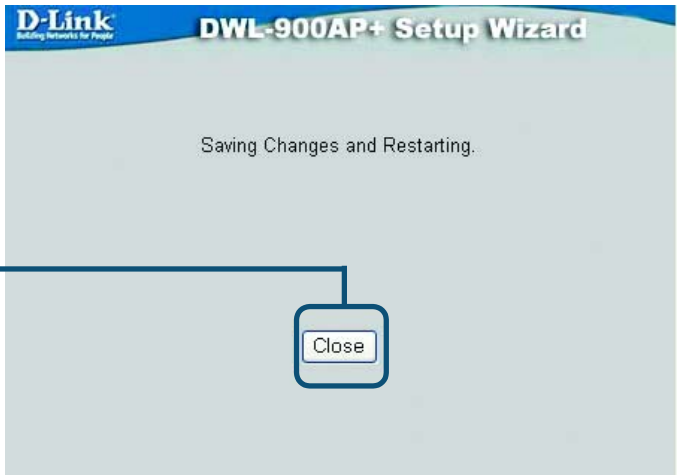
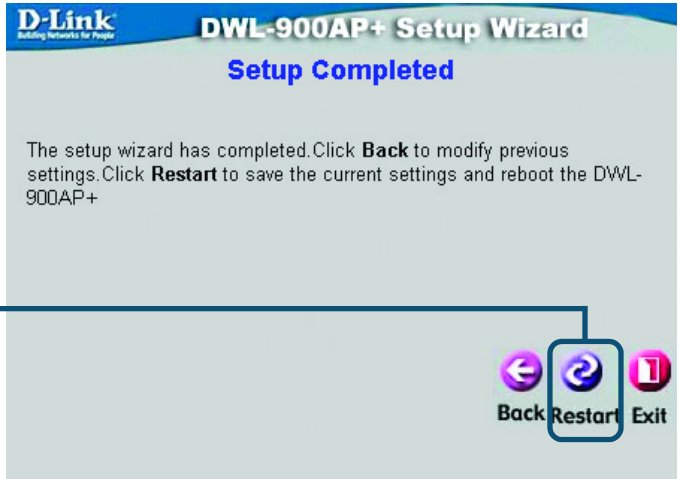
Input 10 HEX characters(HEX is 0-9, A-F or a-f)

Back Next Exit

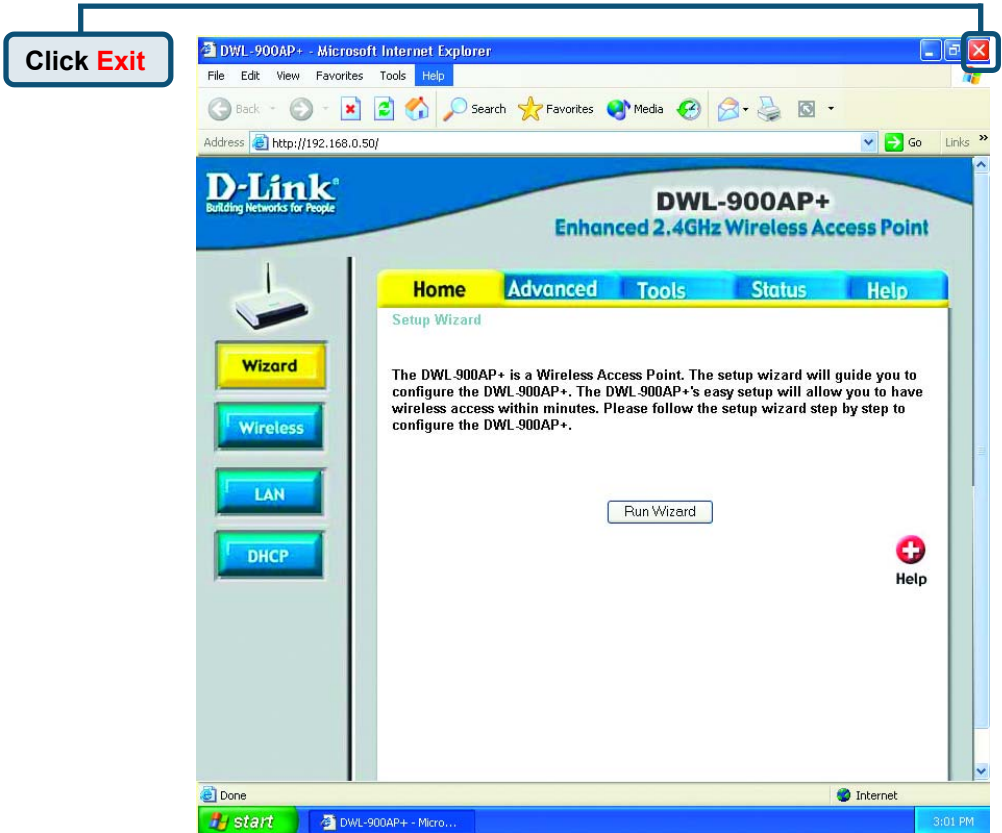
Click **Next**

# 3

## Your Setup is Complete!



You will be returned to the **Home** tab.



For additional settings or information, refer to the **Advanced**, **Tools**, or **Status** tabs on the web-management interface; or to the manual located on the CD-ROM.

## Technical Support

You can find the most recent software and user documentation on the **D-Link** website.

**D-Link** provides free technical support for customers within the United States for the duration of the warranty period on this product.

U.S. customers can contact **D-Link** technical support through our web site or by phone.

**D-Link Technical Support over the Telephone:**

(800) 758-5489

24 hours a day, seven days a week

**D-Link Technical Support over the Internet:**

<http://support.dlink.com>

email: [support@dlink.com](mailto:support@dlink.com)

**D-Link<sup>®</sup>**  
**Building Networks for People**



## Free Manuals Download Website

<http://myh66.com>

<http://usermanuals.us>

<http://www.somanuals.com>

<http://www.4manuals.cc>

<http://www.manual-lib.com>

<http://www.404manual.com>

<http://www.luxmanual.com>

<http://aubethermostatmanual.com>

Golf course search by state

<http://golfingnear.com>

Email search by domain

<http://emailbydomain.com>

Auto manuals search

<http://auto.somanuals.com>

TV manuals search

<http://tv.somanuals.com>