

D-Link Quick Installation Guide

This product can be set up using any current web browser, i.e., Internet Explorer 6 or Netscape Navigator 6.2.3.



DWL-G730AP

D-Link AirPlus™ G
Wireless Pocket
Router/AP

Before You Begin

The default IP address for the DWL-G730AP is **192.168.0.30** with a Subnet Mask of **255.255.255.0**. You will need to assign your computer a Static IP address within the same range as the DWL-G730AP's IP address for the purpose of configuring the DWL-G730AP.

Check Your Package Contents



DWL-G730AP Wireless Pocket Router/AP



CD-ROM with Manual



D-Link Travel Case



USB Power Cable



Ethernet (CAT5 UTP) Cable



5V 1.2A DC Power Adapter



Using a power supply with a different voltage rating will damage and void the warranty of this product.

If any of the above items are missing, please contact your reseller.

1

Hardware Overview

Top Panel



Power LED: Solid indicates a connection to a good power source.

LAN LED: Solid indicates an Ethernet connection. Blinking indicates activity on the Ethernet network.

WLAN LED: A solid light indicates that the wireless segment is ready. This LED blinks during wireless data transmission.

Bottom Panel



Mode Selection Switch: Used to select AP, client, or router mode.

Rear Panel



Reset Button: Used to restore default settings.

LAN Port

This is the connection for Ethernet cables to your Ethernet-enabled device. When in Router mode, this port functions as a WAN port.

Receptor for
Power Adapter

2

Installation Overview

The DWL-G730AP offers three different operation modes:

AP (Access Point Mode): In this mode, the DWL-G730AP functions as an access point.

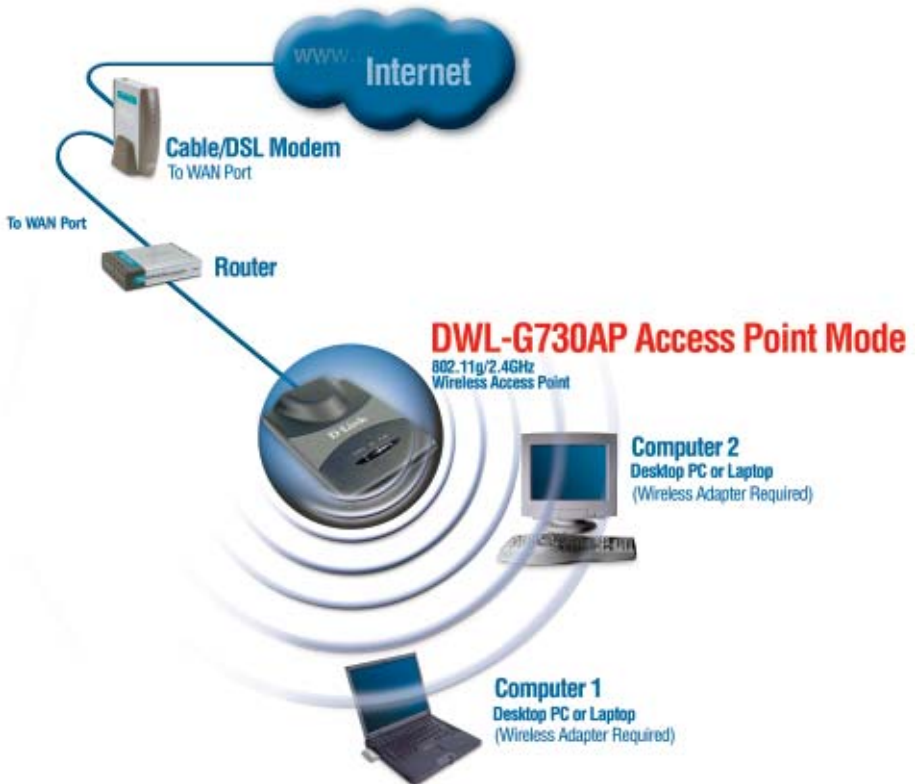
Client (Client Mode): When Client mode is selected, the DWL-G730AP as a wireless client.

RT (Router Mode): The DWL-G730AP functions as a router when this mode is selected.

AP - Access Point Mode

When the Mode Selection Switch on the bottom of the DWL-G730AP is set to AP, the unit is in Access Point Mode. The diagram below illustrates a typical access point configuration.

Note: D-Link® AirPlus G wireless devices are pre-configured to connect together, right out of the box, using their default settings.



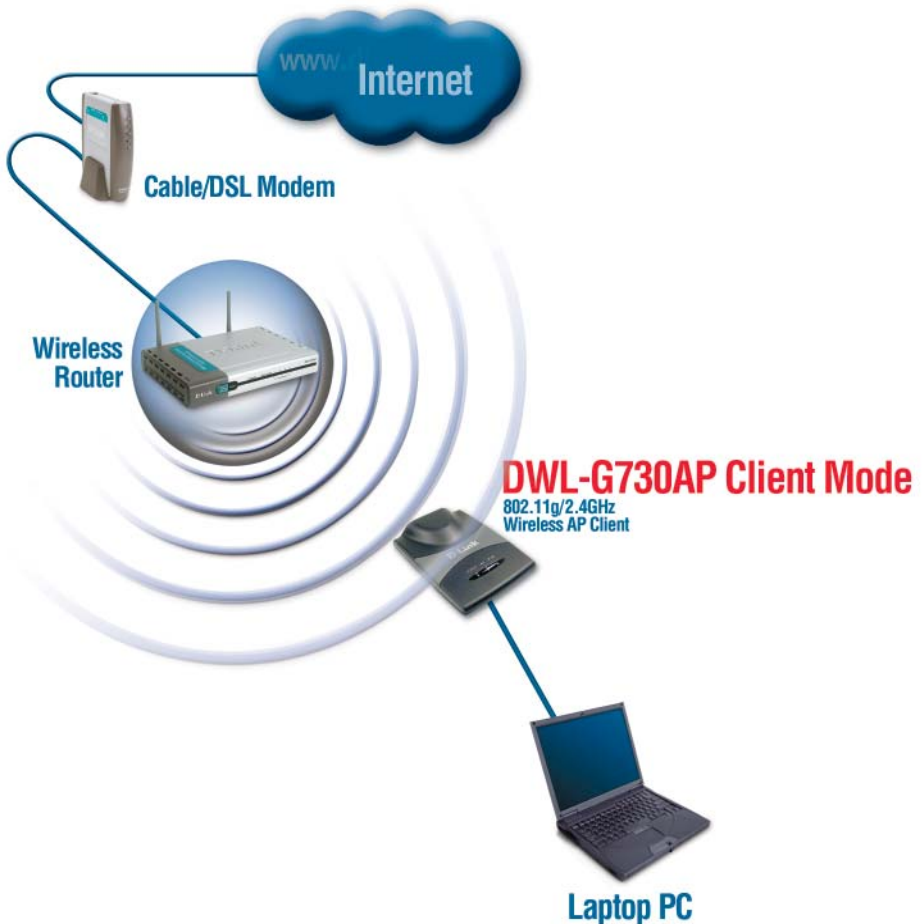
2

Installation Overview (continued)

Client - Client Mode

When the Mode Selection Switch on the bottom of the DWL-G730AP is set to Client, the unit is in Client Mode. The diagram below illustrates a typical client configuration.

Note: D-Link® AirPlus G wireless devices are pre-configured to connect together, right out of the box, using their default settings.



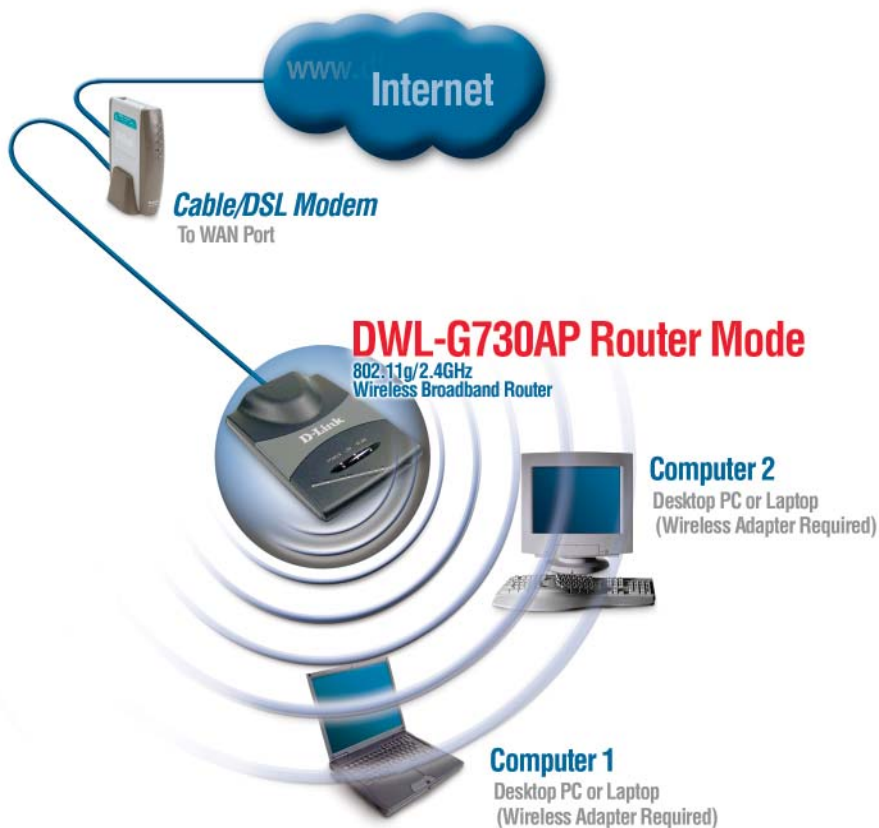
2

Installation Overview (continued)

RT - Router Mode

When the Mode Selection Switch on the bottom of the DWL-G730AP is set to RT, the unit is in Router Mode. The diagram below illustrates a typical router configuration.

Note: D-Link® AirPlus G wireless devices are pre-configured to connect together, right out of the box, using their default settings.



3

AP Mode - Using the Setup Wizard

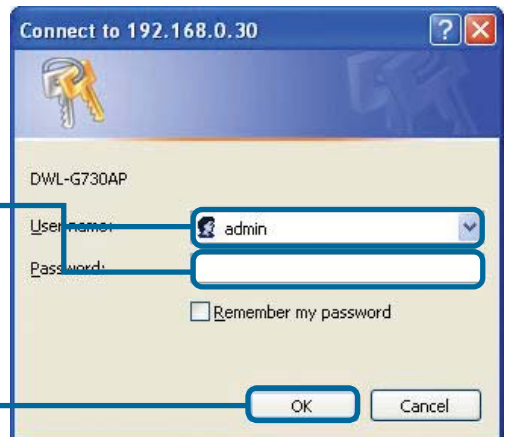
To configure the DWL-G730AP in AP Mode, you will need to connect a PC directly to the DWL-G730AP using a standard Ethernet cable. You will need to assign the network adapter connecting to the DWL-G730AP an IP address in the range of 192.168.0.x.

Open your Web browser and type **http://192.168.0.30** into the URL address box. Then press the **Enter** or **Return** key.



The logon pop-up screen will appear.

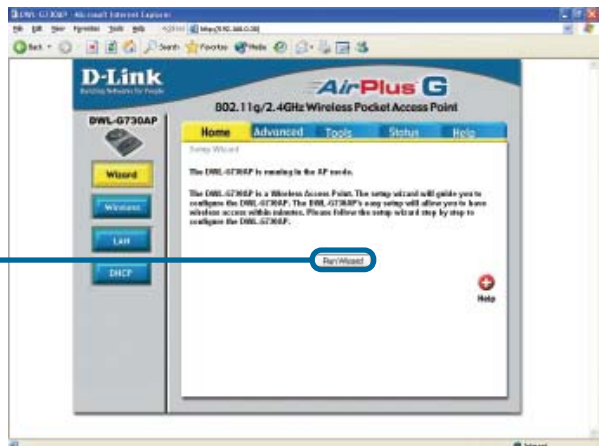
Type **admin** for the username and leave the password field blank.



Click **OK**

Once you have logged in, the **Home** screen will appear.

Click **Run Wizard**

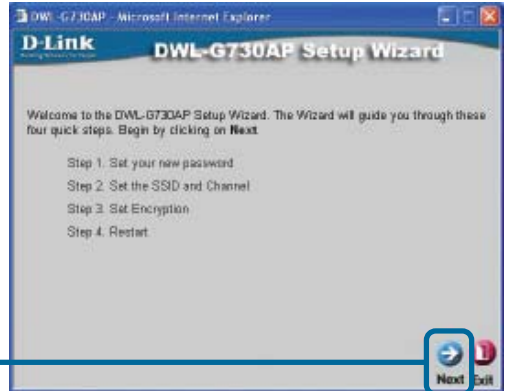


3

AP Mode - Using The Setup Wizard (continued)

You will see the following screens.

Click **Next**



Set up your new password.
You have the option to establish a password.

Click **Next**



Set Your Wireless LAN Connection.

By default the DWL-G730AP **SSID** is set to 'default' with a **Channel** setting of '6'.

Click **Next**



3

AP Mode - Using The Setup Wizard (continued)

Encryption

The DWL-G730AP is capable of two levels of wireless encryption 64-bit and 128-bit. **By default encryption is disabled.** You can change the encryption settings for more secure wireless communication.

Click **Next**



Click **Restart**



Click **Close**



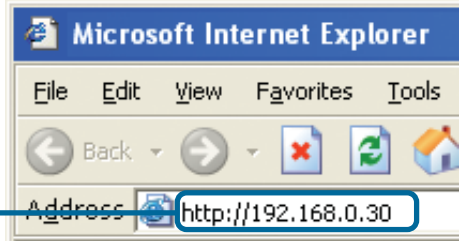
The AP Setup Wizard is complete! You will be returned to the **Home** tab. Please close all web browser windows.

4

Client Mode - Using the Setup Wizard

To configure the DWL-G730AP in Client Mode, you will need to connect a PC directly to the DWL-G730AP using a standard Ethernet cable. You will need to assign the network adapter connecting to the DWL-G730AP an IP address in the range of 192.168.0.x.

Open your **Web browser** and type **http://192.168.0.30** into the URL address box. Then press the **Enter** or **Return** key.



The logon pop-up screen will appear.

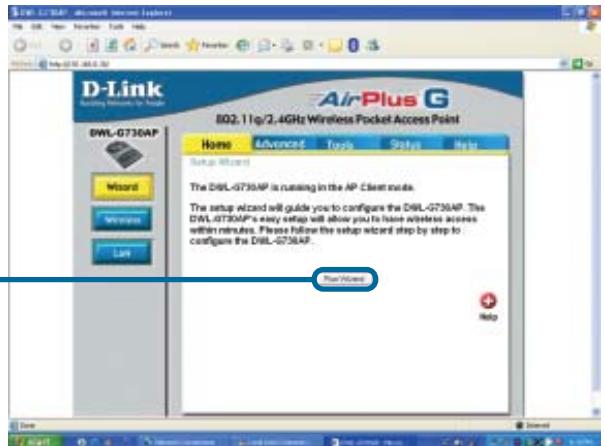
Type **admin** for the username and leave the password field blank.



Click **OK**

Once you have logged in, the **Home** screen will appear.

Click **Run Wizard**

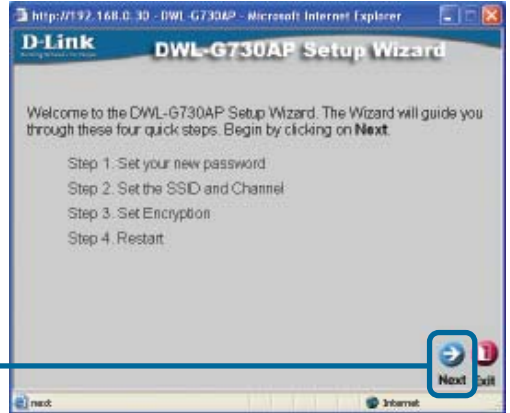


4

Client Mode - Using the Setup Wizard (continued)

You will see the following screens.

Click **Next**



Set up your new password. You have the option to establish a password.

Click **Next**



Set Your Wireless LAN Connection.

Type in your network's **SSID** or click on the Site Survey button to see the available SSID's. Select the **Channel** setting of your network.

Click **Next**



4

Client Mode - Using the Setup Wizard (continued)

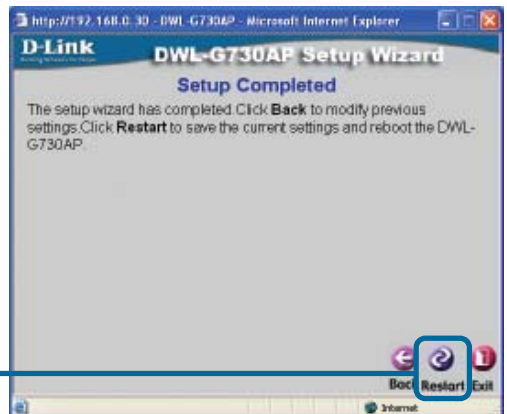
Encryption

The DWL-G730AP is capable of two levels of wireless encryption 64-bit and 128-bit. **By default encryption is disabled.** You can change the encryption settings for more secure wireless communication.

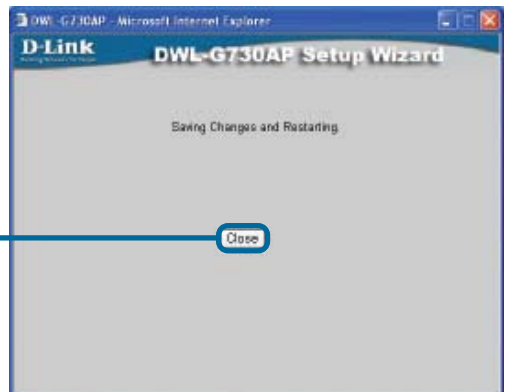
Click **Next**



Click **Restart**



Click **Close**



The Client Setup Wizard is complete! You will be returned to the **Home** tab. Please close all web browser windows.

5

Router Mode - Using the Setup Wizard

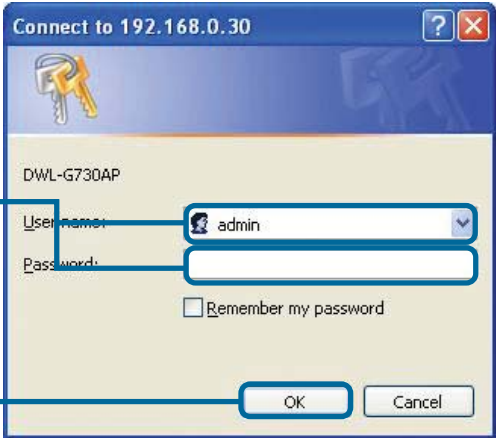
To configure the DWL-G730AP in Router mode, you must be connected to the router via a wireless network adapter. The LAN Port on the unit functions as a WAN port when the DWL-G730AP is operating in Router mode. To run the setup wizard, establish a wireless connection with the DWL-G730AP and follow the steps below.

Open your Web browser and type **http://192.168.0.30** into the URL address box. Then press the **Enter** or **Return** key.



The logon pop-up screen will appear.

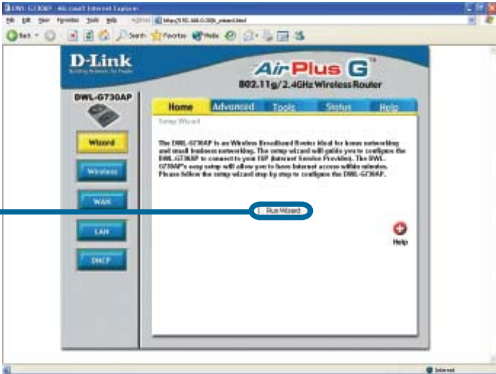
Type **admin** for the username and leave the password field blank.



Click **OK**

Once you have logged in, the Home screen will appear.

Click **Run Wizard**

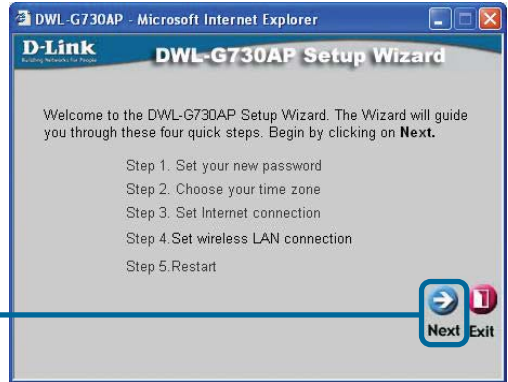


5

Router Mode - Using the Setup Wizard (continued)

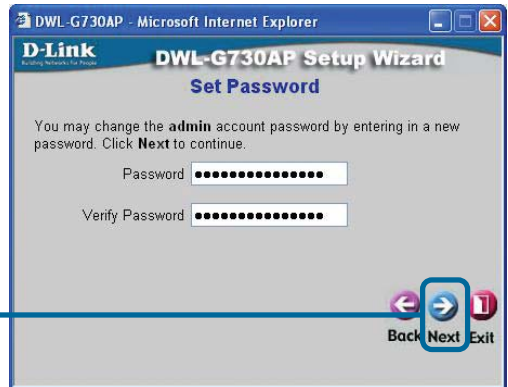
You will see the following screens.

Click **Next**



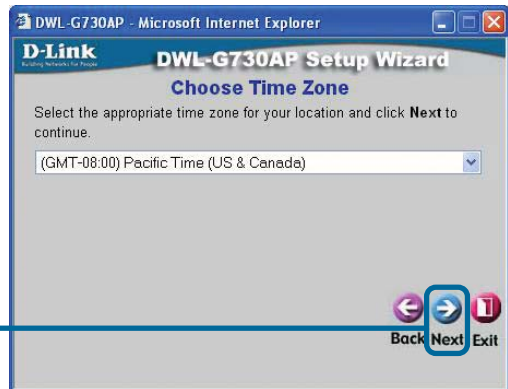
Set up your new password.
You have the option to establish a password.

Click **Next**



Choose Your Time Zone.
Select the appropriate time zone for your location.

Click **Next**




5

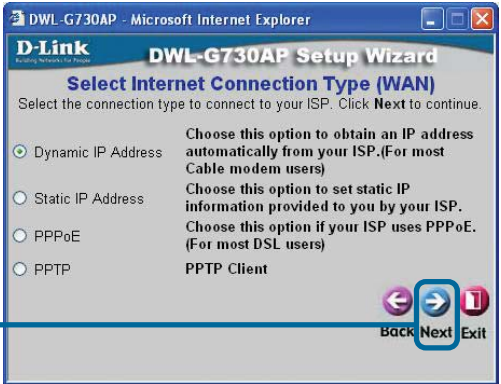
Router Mode - Using the Setup Wizard (continued)

Select your Internet Connection.

You will be prompted to select the type of Internet connection for your router.

 If you are unsure of which setting to select, please contact your Internet Service Provider.

Click **Next**



DWL-G730AP - Microsoft Internet Explorer

D-Link DWL-G730AP Setup Wizard

Select Internet Connection Type (WAN)

Select the connection type to connect to your ISP. Click **Next** to continue.


- Dynamic IP Address Choose this option to obtain an IP address automatically from your ISP. (For most Cable modem users)
- Static IP Address Choose this option to set static IP information provided to you by your ISP.
- PPPoE Choose this option if your ISP uses PPPoE. (For most DSL users)
- PPTP PPTP Client

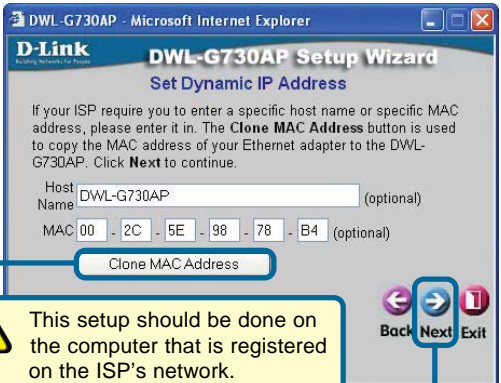
Back Next Exit

If you selected **Dynamic IP Address**, this screen will appear: (Used mainly for Cable Internet service.)

The **Clone MAC Address** button will automatically copy the MAC address of the network adapter in your computer. You can also manually type in the MAC address.

Click **Next**

 This setup should be done on the computer that is registered on the ISP's network.



DWL-G730AP - Microsoft Internet Explorer

D-Link DWL-G730AP Setup Wizard

Set Dynamic IP Address

If your ISP require you to enter a specific host name or specific MAC address, please enter it in. The **Clone MAC Address** button is used to copy the MAC address of your Ethernet adapter to the DWL-G730AP. Click **Next** to continue.

Host Name: DWL-G730AP (optional)

MAC: 00 - 2C - 5E - 98 - 78 - B4 (optional)


Clone MAC Address

Back Next Exit

Set Your Wireless LAN Connection.

By default the DWL-G730AP **SSID** is set to **default** with a **Channel** setting of '6'.

Click **Next**



DWL-G730AP - Microsoft Internet Explorer

D-Link DWL-G730AP Setup Wizard

Set Wireless LAN Connection

Enter in the SSID name and Channel number to be used for the Wireless Access Point. Click **Next** to continue.

SSID: default

Channel: 6

Back Next Exit

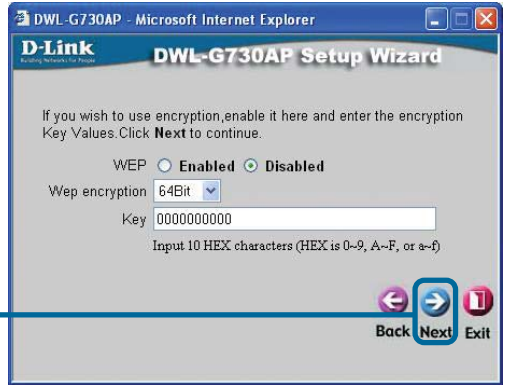
5

Router Mode - Using the Setup Wizard (continued)

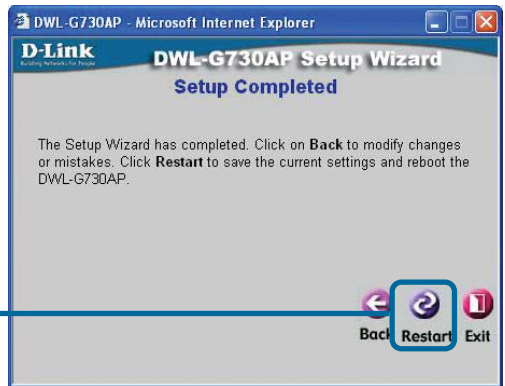
Encryption

The DWL-G730AP is capable of two levels of wireless encryption 64-bit and 128-bit. **By default encryption is disabled.** You can change the encryption settings for more secure wireless communication.

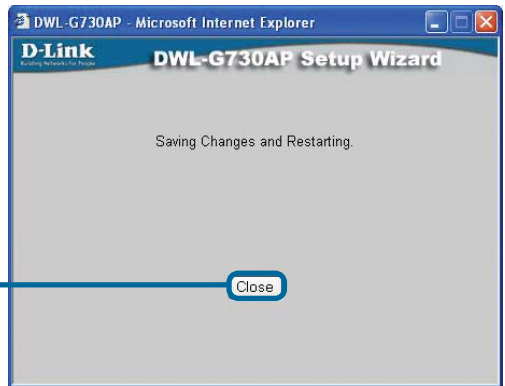
Click **Next**



Click **Restart**



Click **Close**



The Router Setup Wizard is complete! You will be returned to the **Home** tab. Please close all web browser windows.

Technical Support

You can find software updates and user documentation on the D-Link website.

D-Link provides free technical support for customers within the United States and within Canada for the duration of the warranty period on this product.

U.S. and Canadian customers can contact D-Link technical support through our website, or by phone.

Tech Support for customers within the United States:

D-Link Technical Support over the Telephone:

(877) 453-5465

24 hours a day, seven days a week.

D-Link Technical Support over the Internet:

<http://support.dlink.com>

email:support@dlink.com

Tech Support for customers within Canada:

D-Link Technical Support over the Telephone:

(800) 361-5265

Monday to Friday 7:30am to 12:00am EST

D-Link Technical Support over the Internet:

<http://support.dlink.ca>

email:support@dlink.ca



Free Manuals Download Website

<http://myh66.com>

<http://usermanuals.us>

<http://www.somanuals.com>

<http://www.4manuals.cc>

<http://www.manual-lib.com>

<http://www.404manual.com>

<http://www.luxmanual.com>

<http://aubethermostatmanual.com>

Golf course search by state

<http://golfingnear.com>

Email search by domain

<http://emailbydomain.com>

Auto manuals search

<http://auto.somanuals.com>

TV manuals search

<http://tv.somanuals.com>