

D-Link Quick Installation Guide

Stand-alone Videoconferencing
Over Broadband IP.
No Computer Needed



DVC-2000
Broadband
Desktop
VideoPhone

Patent Pending

Before You Begin

- Using the D-Link i2eye™ DVC-2000 VideoPhone requires a Broadband Internet connection.
- If you are sharing the Internet connection with another device (such as a PC), you will also need a broadband router or residential gateway.

Check Your Package Contents



i2eye™ DVC-2000 VideoPhone



Quick Installation Guide and Instruction Manual



Ethernet (CAT5 UTP/Straight Through) Cable



Standard Composite RCA Audio/Video Cable



Standard Telephone Cable



12V DC, 1A Power Adapter



Using a power supply with a different voltage rating will damage this product and void the warranty.

If any of the above items are missing, please contact your reseller.

1

Connecting the DVC-2000 VideoPhone

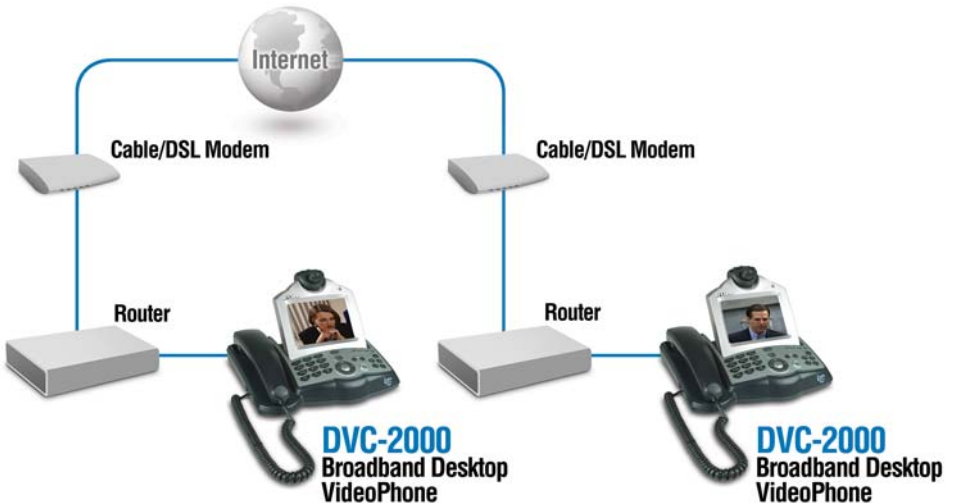
- A. Place the DVC-2000 VideoPhone in a location where you can easily connect to a phone jack, power outlet, and to your router or gateway.
 - B. Attach the supplied Ethernet cable (blue) to the blue colored port labeled ETHERNET on the DVC-2000 and connect the other end to your Ethernet network device (hub, switch, router, or broadband modem).
 - C. Attach the supplied standard telephone cable (grey) to a telephone wall jack and connect the other end to the grey port labeled PHONE on the DVC-2000.
 - D. **Optional:** If you want to use a television instead of the built in video display screen, connect the supplied yellow and white RCA cables to the yellow and white RCA connectors on the DVC-2000 and to the matching audio/video jacks on the television or VCR.
- Note: You must toggle the TV/LCD switch on the side on the unit if you want to use the television output.*
- E. Plug the supplied AC power cable into an AC outlet and then connect the other end to the DVC-2000.



2

Sharing a Broadband Connection With the i2eye DVC-2000

If you are sharing your broadband connection with any other devices, use additional Ethernet (CAT5 UTP) cables to connect your broadband equipment to a router or residential gateway. When you have completed the steps in this *Quick Installation Guide*, your connected VideoPhone should look similar to this:



Before using your D-Link DVC-2000 VideoPhone, you will want to understand the network requirements for this device. If you are using a residential gateway or router and sharing the broadband connection with your DVC-2000, please read the section starting on Page 51 of the manual included with the DVC-2000.

3

Hardware Overview

The DVC-2000 VideoPhone needs to be setup before use. There is an easy to use **Setup Wizard** built into the DVC-2000 to accomplish the setup.



4

Using the On-Screen Keyboard

Whenever you need to enter numbers or letters into a Setup screen, press **OK** on the DVC-2000 and the on-screen keyboard appears:



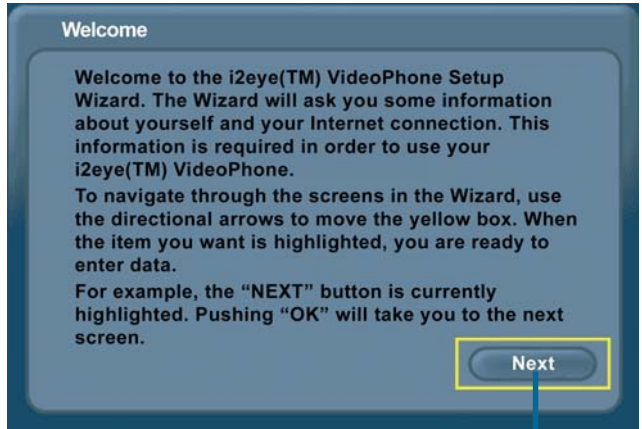
Use the arrow keys to move the cursor to the desired character. The cursor can wrap around on the right and left side of the keyboard to assist you in “typing” a character quickly.

To remove the keyboard from the screen highlight OK in the bottom right corner of the keyboard window and press the OK button on the DVC-2000. The **Cancel** button on the DVC-2000 can also be used to remove the keyboard from the screen and will leave the information you typed on the screen.

5

The Setup Wizard

Press the power switch on the back of the DVC-2000 and the **Welcome Screen** appears.



Click **Next**

Personal Information Screen

Enter your name and phone number (consisting of a Country code, Area code and Phone number.)

The **phone number** you enter is one you create for family, friends and others to call you. You can use your regular phone number or make up a new one. The Caller ID function displays this name at the other end of the connection. Your number will not be visible to anyone else.



Click **Next**

Note: The Country code for the United States and Canada is "1". See Page 68 of the DVC-2000 manual for Country codes of other countries.

5

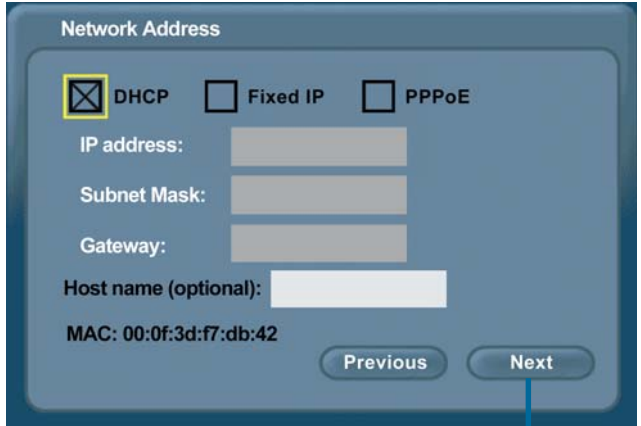
The Setup Wizard (continued)

Network Address Screen

Choose one of the three available options that best suits your environment. If you are not sure which option will work with your Internet connection, please contact your ISP or network administrator for support.

Option 1: DHCP

Used when connecting directly to a broadband modem, router, gateway or DHCP server that offers dynamic IP addressing.

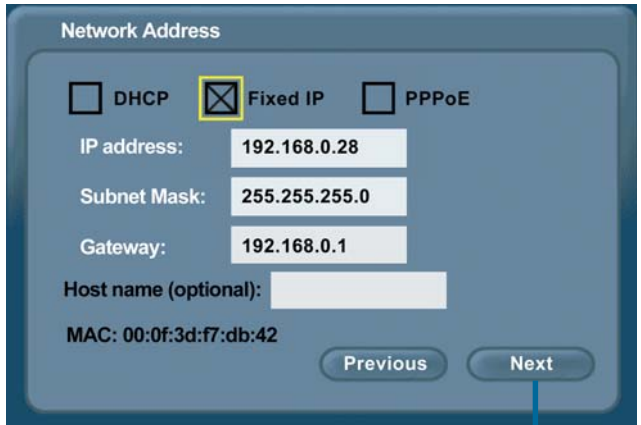


The screenshot shows the 'Network Address' configuration window. At the top, there are three radio button options: 'DHCP' (which is selected and highlighted with a yellow box), 'Fixed IP', and 'PPPoE'. Below these are four input fields: 'IP address:', 'Subnet Mask:', 'Gateway:', and 'Host name (optional):'. The 'MAC' address is displayed as '00:0f:3d:f7:db:42'. At the bottom right, there are two buttons: 'Previous' and 'Next'. A blue line connects the 'Next' button to a callout box.

Click **Next**

Option 2: Fixed IP

Used when you are connecting to a broadband modem, router, or gateway that is configured to use a static IP address. This choice requires the input of specific IP address information.



The screenshot shows the 'Network Address' configuration window. At the top, there are three radio button options: 'DHCP', 'Fixed IP' (which is selected and highlighted with a yellow box), and 'PPPoE'. Below these are four input fields: 'IP address:' (with the value '192.168.0.28'), 'Subnet Mask:' (with the value '255.255.255.0'), 'Gateway:' (with the value '192.168.0.1'), and 'Host name (optional):'. The 'MAC' address is displayed as '00:0f:3d:f7:db:42'. At the bottom right, there are two buttons: 'Previous' and 'Next'. A blue line connects the 'Next' button to a callout box.

Click **Next**

5

The Setup Wizard (continued)

DNS Screen

If you selected Fixed IP in the **Network Address** screen, you will see the screen for setting DNS server addresses. Only the primary DNS is required, although entering both a primary and secondary is recommended.

DNS

Primary DNS: 192.168.0.1

Secondary DNS:

Previous Next

Click **Next**

Option 3: PPPoE

Used when connecting directly to a DSL modem that offers a PPPoE connection. Your user name and password for the PPPoE account must be entered in the provided fields.

Network Address

DHCP Fixed IP PPPoE

Username: RHALO

Password: 04WEST

Gateway:

Host name (optional):

MAC: 00:0f:3d:f7:db:42

Previous Next

Click **Next**

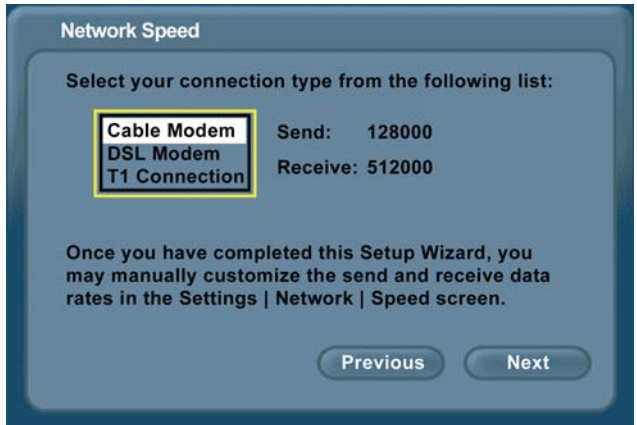
To configure a router to work with the DVC-2000, please see the section starting on Page 51 of the DVC-2000 manual.

5

The Setup Wizard (continued)

Network Speed Screen

Select the type of broadband Internet connection you use.



Click **Next**

System Restart



Click **Yes**

Your Setup is Complete!

6

Using the DVC-2000

The DVC-2000 offers two different operating modes, PSTN mode and Broadband mode. PSTN Mode is the default startup mode and functions as a standard telephone. The PSTN screen appears after you've completed the Setup Wizard (as shown below). To dial, lift up the receiver or press the speakerphone button and you can make a call as you normally would via your standard phone connection. In PSTN mode neither party can see the party on the other end. The DVC-2000 functions solely as a standard telephone in PSTN mode with no video functionality.



To toggle between PSTN and Broadband mode, click on the **Broadband** button.

PSTN Mode: PSTN stands for Public Standard Telephone Network. This is the international phone standard of transmitting analog voice data over copper wires. In PSTN mode, your DVC-2000 functions as a standard telephone using your standard phone line connection.

Broadband Mode: Broadband mode allows you to video conference via your Internet connection using digital communication standards. You can connect to anyone with a broadband connection and an i2eye™ device from anywhere in the world.

6

Using the DVC-2000

Layout of the i2eye Broadband Screen



When powered on and after completing the Setup Wizard, the DVC-2000 is in PSTN Mode. To enter Broadband Mode, press the **Broadband** button on the DVC-2000 and the screen above will appear. The larger **Main Window** displays the self-view until a call is connected and then displays the party you are calling. The smaller **Self-View Window** then displays the self-view when a call is connected. To toggle the images that are in the **Main Window** and **Self-View Window**, press the **Self/Remote** button.

For additional details on using the DVC-2000, please refer to the User Manual.

Technical Support

You can find software updates and user documentation on the D-Link website.

D-Link provides free technical support for customers within the United States and within Canada for the duration of the warranty period on this product.

U.S. and Canadian customers can contact D-Link technical support through our website, or by phone.

Tech Support for customers within the United States:

D-Link Technical Support over the Telephone:

(877) 453-5465

24 hours a day, seven days a week

D-Link Technical Support over the Internet:

<http://support.dlink.com>

[email:support@dlink.com](mailto:support@dlink.com)

Tech Support for customers within Canada:

D-Link Technical Support over the Telephone:

(800) 361-5265

Monday to Friday 7:30am to 12:00am EST

D-Link Technical Support over the Internet:

<http://support.dlink.ca>

[email:support@dlink.ca](mailto:support@dlink.ca)



Free Manuals Download Website

<http://myh66.com>

<http://usermanuals.us>

<http://www.somanuals.com>

<http://www.4manuals.cc>

<http://www.manual-lib.com>

<http://www.404manual.com>

<http://www.luxmanual.com>

<http://aubethermostatmanual.com>

Golf course search by state

<http://golfingnear.com>

Email search by domain

<http://emailbydomain.com>

Auto manuals search

<http://auto.somanuals.com>

TV manuals search

<http://tv.somanuals.com>