

Operating temperatures are controlled by the thermostat knob (see diagram) located on the cabinet top trim, visible when the refrigerator door is open. Settings may be made from 1 to Max, Max being the coldest position.

When the appliance is switched on for the first time, the thermostat should be adjusted so that after 24 hours, the average fridge temperature is no higher than +5°C.

Set the thermostat half way between the 1 and Max setting and monitor to obtain the desired temperature i. e. towards Max you will obtain a colder fridge temperature and vice versa.

The normal storage temperature of the freezer should be -18°C. Lower temperatures may be obtained by adjusting the thermostat knob towards the Max position.

**Slimline water dispenser (KS 603613 W)**  
**LED illumination (KS 603613 W & KS 60361 W)**  
**KS 603613 W**

Refrigerator Specifications		
Model	K 603613 W	K 60361 W
Appliance type	Refrigerator	Refrigerator
Total Gross volume (L.)	363	365
Net volume (L.)	334	336
Dimensions (HxWxD) mm	1845x600x650	1845x600x650
Energy class (1)	A	A
Climate class	SN	SN
Temperature rise time	19 Hours	19 Hours
Energy consumption (kWh/year)	376	377
Refrigerant gas	R600a	R600a
(1) Energy classes : A+++ . . . G (A+++ = economical . . . G = less economical)		



ENERGY CLASS

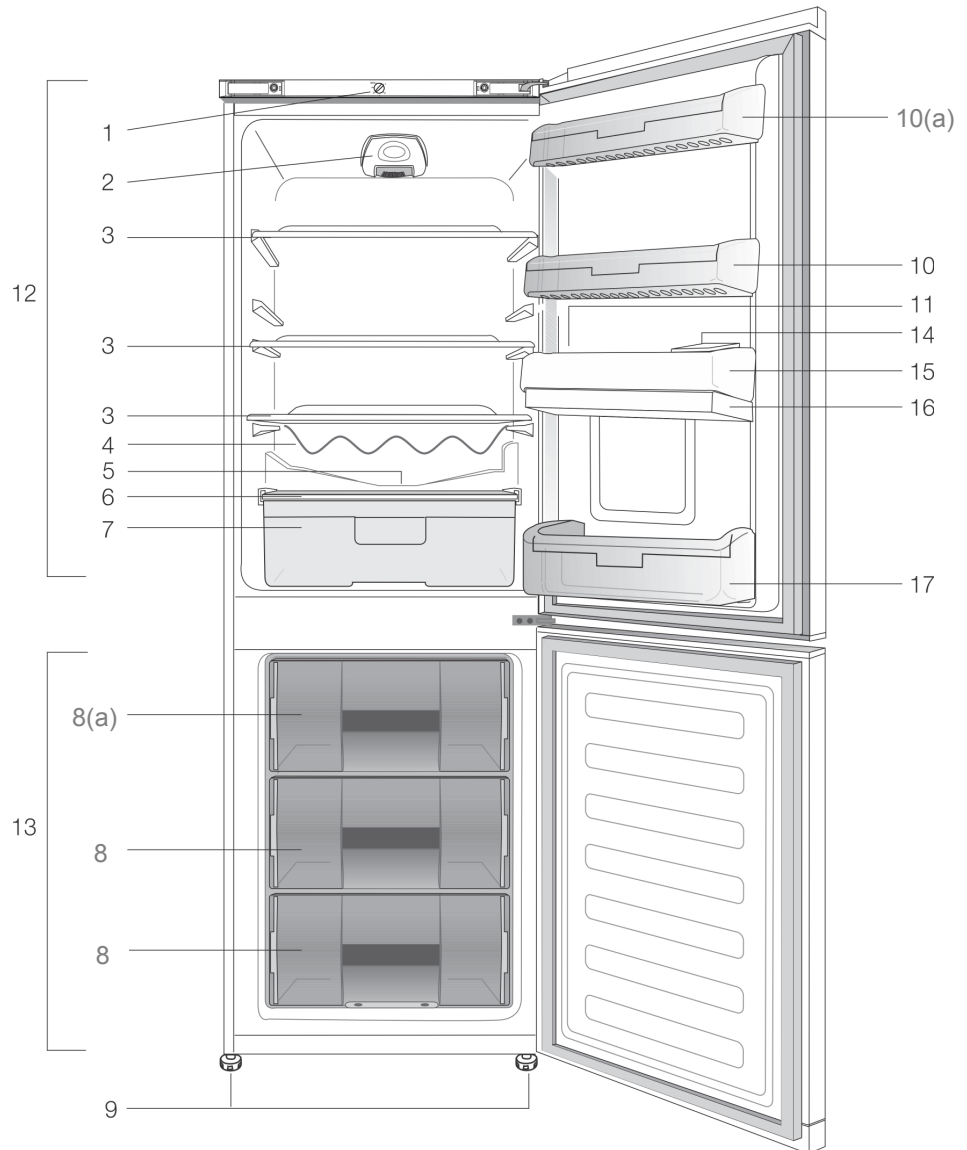


NO FROST FREEZER



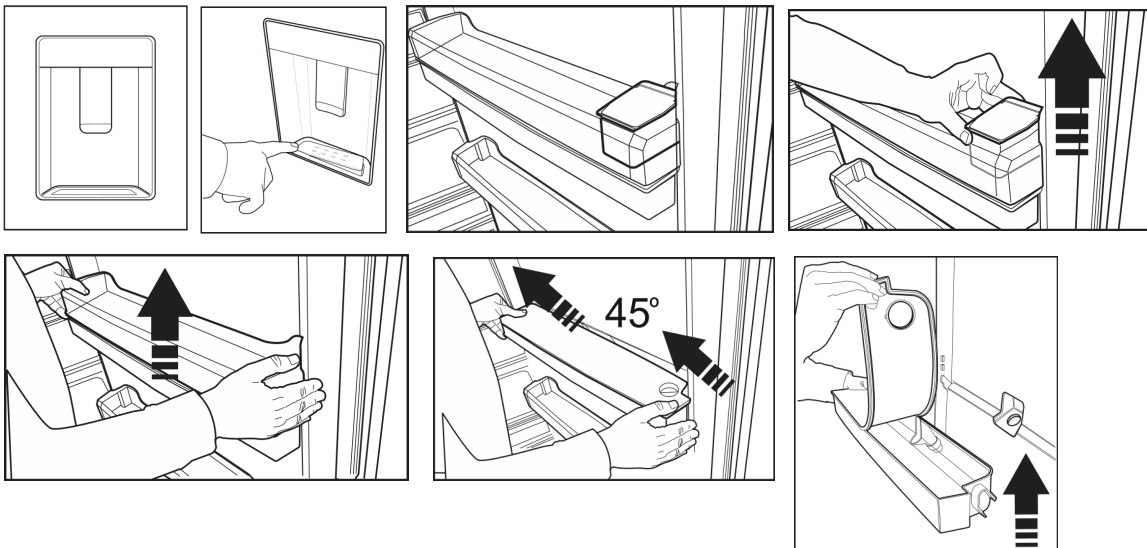
**Know your refrigerator:**

1. Thermostat knob
  2. Interior light
  3. Adjustable shelves
  4. Bottle rack \*
  5. Defrost water collection channel - Drain tube
  6. Crisper cover
  7. Salad crisper
  - 8(a). Freezer drawer with ice tray
  8. Freezer drawer
  9. Adjustable front feet
  - 10(a). Dairy shelf
  10. Door shelf
  11. Egg tray
  12. Fridge compartment
  13. Freezer compartment
  14. Water dispenser filling container \*
  15. Water dispenser upper shelf \*
  16. Water dispenser tank \*
  17. Bottle shelf
- \* (Depends on Model).



**Water dispenser: (KS 603613 W)**

The water dispenser allows access to chilled water without having to open the refrigerator door. The number of door openings are thus reduced, less cold air is lost from the refrigerator and you save on electricity costs.



## Free Manuals Download Website

<http://myh66.com>

<http://usermanuals.us>

<http://www.somanuals.com>

<http://www.4manuals.cc>

<http://www.manual-lib.com>

<http://www.404manual.com>

<http://www.luxmanual.com>

<http://aubethermostatmanual.com>

Golf course search by state

<http://golfingnear.com>

Email search by domain

<http://emailbydomain.com>

Auto manuals search

<http://auto.somanuals.com>

TV manuals search

<http://tv.somanuals.com>