

Dell XPS 15

Owner's Manual

Computer model: XPS L521X
Regulatory model: P23F
Regulatory type: P23F001



Notes, Cautions, and Warnings



NOTE: A NOTE indicates important information that helps you make better use of your computer.




CAUTION: A CAUTION indicates potential damage to hardware or loss of data if instructions are not followed.



WARNING: A WARNING indicates a potential for property damage, personal injury, or death.

© 2012 Dell Inc.

Trademarks used in this text: Dell™, the DELL logo, and XPST™ are trademarks of Dell Inc.; Microsoft®, Windows®, and the Windows start button logo  are either trademarks or registered trademarks of Microsoft corporation in the United States and/or other countries; Bluetooth® is a registered trademark owned by Bluetooth SIG, Inc. and is used by Dell under license.

2012 - 06

Rev. A00

Contents

Before You Begin	8
Turn Off Your Computer and Connected Devices.	8
Safety Instructions.	8
Recommended Tools.	9
After Working Inside Your Computer	10
Removing the Base Cover	11
Procedure	11
Replacing the Base Cover	14
Procedure	14
Removing the Battery-LED Board	15
Prerequisites.	15
Procedure	15
Replacing the Battery-LED Board	17
Procedure	17
Postrequisites.	17
Removing the System Badge	18
Prerequisites.	18
Procedure	18
Replacing the System Badge	20
Procedure	20
Postrequisites.	20
Removing the Battery	21
Prerequisites.	21
Procedure	21
Replacing the Battery	22
Procedure	22
Postrequisites.	22

Removing the Memory Module(s)	23
Prerequisites.	23
Procedure	24
Replacing the Memory Module(s)	25
Procedure	25
Postrequisites.	26
Removing the Hard Drive	27
Prerequisites.	27
Procedure	27
Replacing the Hard Drive	29
Procedure	29
Postrequisites.	29
Removing the Optical Drive	30
Prerequisites.	30
Procedure	30
Replacing the Optical Drive	33
Procedure	33
Postrequisites.	33
Removing the Wireless Mini-Card	34
Prerequisites.	34
Procedure	34
Replacing the Wireless Mini-Card	35
Procedure	35
Postrequisites.	35
Removing the mSATA Card	36
Prerequisites.	36
Procedure	36
Replacing the mSATA Card	37
Procedure	37
Postrequisites.	37


Removing the Coin-Cell Battery	38
Prerequisites.	38
Procedure	38
Replacing the Coin-Cell Battery	40
Procedure	40
Postrequisites.	40
Removing the Fan	41
Prerequisites.	41
Procedure	41
Replacing the Fan	42
Procedure	42
Postrequisites.	42
Removing the Processor Heat-Sink	43
Prerequisites.	43
Procedure	43
Replacing the Processor Heat-Sink	44
Procedure	44
Postrequisites.	44
Removing the I/O Board	45
Prerequisites.	45
Procedure	45
Replacing the I/O Board	46
Procedure	46
Postrequisites.	46
Removing the Speakers	47
Prerequisites.	47
Procedure	47
Replacing the Speakers	49
Procedure	49
Postrequisites.	49


Removing the Power/Battery Status-Light Board	50
Prerequisites.	50
Procedure	50
Replacing the Power/Battery Status-Light Board	52
Procedure	52
Postrequisites.	52
Removing the System Board	53
Prerequisites.	53
Procedure	54
Replacing the System Board	57
Procedure	57
Postrequisites.	58
Entering the Service Tag in BIOS	58
Removing the Air Vent	59
Prerequisites.	59
Procedure	60
Replacing the Air Vent	62
Procedure	62
Postrequisites.	62
Removing the Keyboard	63
Prerequisites.	63
Procedure	64
Replacing the Keyboard	65
Procedure	65
Postrequisites.	65
Removing the Display	66
Prerequisites.	66
Procedure	67

Replacing the Display	68
Procedure	68
Postrequisites.	68
Removing the Palm Rest	69
Prerequisites.	69
Procedure	70
Replacing the Palm Rest	71
Procedure	71
Postrequisites.	71
Flashing the BIOS	72

Before You Begin

Turn Off Your Computer and Connected Devices

 **CAUTION:** To avoid losing data, save and close all open files and exit all open programs before you turn off your computer.

- 1 Save and close all open files and exit all open programs.
- 2 Click **Start**  and click **Shut down**.

Microsoft Windows shuts down and then the computer turns off.





NOTE: If you are using a different operating system, see the documentation of your operating system for shut-down instructions.

- 3 Disconnect your computer and all attached devices from their electrical outlets.
- 4 Disconnect all telephone cables, network cables, and attached devices from your computer.

Safety Instructions


Use the following safety guidelines to protect your computer from potential damage and ensure your personal safety.


 **WARNING:** Before working inside your computer, read the safety information that shipped with your computer. For additional safety best practices information, see the Regulatory Compliance Homepage at dell.com/regulatory_compliance.


 **WARNING:** Disconnect all power sources before opening the computer cover or panels. After you finish working inside the computer, replace all covers, panels, and screws before connecting to the power source.


 **CAUTION:** To avoid damaging the computer, ensure that the work surface is flat and clean.

 **CAUTION:** To avoid damaging the components and cards, handle them by their edges and avoid touching pins and contacts.

 **CAUTION:** Only a certified service technician is authorized to remove the computer cover and access any of the components inside the computer. See the safety instructions for complete information about safety precautions, working inside your computer, and protecting against electrostatic discharge.

 **CAUTION:** Before touching anything inside your computer, ground yourself by touching an unpainted metal surface, such as the metal at the back of the computer. While you work, periodically touch an unpainted metal surface to dissipate static electricity, which could harm internal components.

 **CAUTION:** When you disconnect a cable, pull on its connector or on its pull-tab, not on the cable itself. Some cables have connectors with locking tabs or thumb-screws that you must disengage before disconnecting the cable. When disconnecting cables, keep them evenly aligned to avoid bending any connector pins. When connecting cables, ensure that the connectors and ports are correctly oriented and aligned.

 **CAUTION:** To disconnect a network cable, first unplug the cable from your computer and then unplug the cable from the network device.

 **CAUTION:** Press and eject any installed card from the media-card reader.

Recommended Tools

The procedures in this document may require the following tools:

- Phillips screwdriver
- Torx #5 (T5) screwdriver

After Working Inside Your Computer

After you complete replacement procedures, ensure the following:

- Replace all screws and ensure that no stray screws remain inside your computer.
- Connect any external devices, cables, cards, and any other part(s) you removed before working on your computer.
- Connect your computer and all attached devices to their electrical outlets.



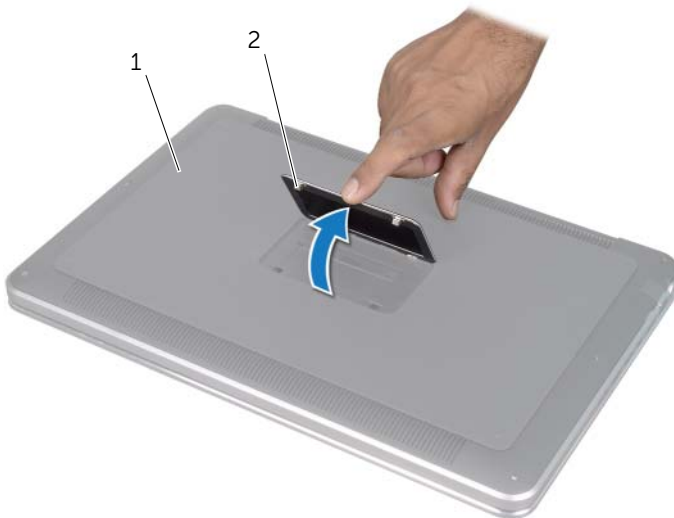
CAUTION: Before turning on your computer, replace all screws and ensure that no stray screws remain inside the computer. Failure to do so may damage your computer.

Removing the Base Cover

⚠ WARNING: Before working inside your computer, read the safety information that shipped with your computer and follow the steps in "Before You Begin" on page 8. After working inside your computer, follow the instructions in "After Working Inside Your Computer" on page 10. For additional safety best practices information, see the Regulatory Compliance Homepage at dell.com/regulatory_compliance.

Procedure

- 1 Close the display and turn the computer over.
- 2 Starting at the indicator on the base-cover assembly, turn the system badge over.



1 base-cover assembly

2 system badge

- 3 Using a Phillips screwdriver, remove the screws beneath the system badge.
- 4 Using a T5 screwdriver, remove the screws from the base-cover assembly.



1 T5 screws (6)

2 screws (2)

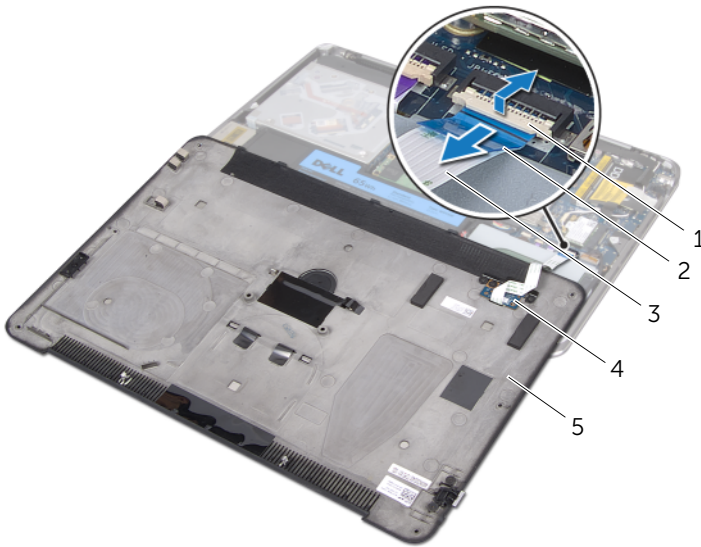
- 5 Slide the tabs on the system badge into the slots on the base-cover assembly and snap the system badge into place.
- 6 Starting from the back of the computer, pry the base-cover assembly, turn the base-cover assembly over, and place it on the palm-rest assembly.



1 base-cover assembly

2 palm-rest assembly

- 7 Lift the connector latch and, using the pull-tab, disconnect the battery-LED-board cable from the system board.



1	connector latch	2	pull-tab
3	battery-LED-board cable	4	battery-LED board
5	base-cover assembly		

- 8 Remove the battery-LED board from the base cover. See "Removing the Battery-LED Board" on page 15.

Replacing the Base Cover



WARNING: Before working inside your computer, read the safety information that shipped with your computer and follow the steps in "Before You Begin" on page 8. After working inside your computer, follow the instructions in "After Working Inside Your Computer" on page 10. For additional safety best practices information, see the Regulatory Compliance Homepage at dell.com/regulatory_compliance.

Procedure

- 1 Replace the battery-LED board on the base cover. See "Replacing the Battery-LED Board" on page 17.
- 2 Slide the battery-LED-board cable into the battery-LED-board cable connector and press down on the connector latch to secure the cable.
- 3 Carefully turn the base-cover assembly over and snap the base-cover assembly into place.
- 4 Using a T5 screwdriver, replace the screws beneath the system badge.
- 5 Starting at the indicator on the base-cover assembly, turn the system badge over and place it on the base-cover assembly.
- 6 Using a Phillips screwdriver, replace the screws to the base-cover assembly.
- 7 Slide the tabs on the system badge into the slots on the base-cover assembly and snap the system badge into place.

Removing the Battery-LED Board

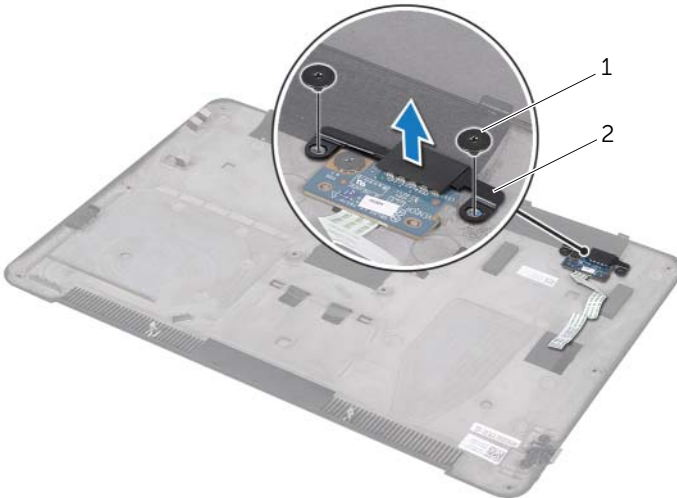
⚠ WARNING: Before working inside your computer, read the safety information that shipped with your computer and follow the steps in "Before You Begin" on page 8. After working inside your computer, follow the instructions in "After Working Inside Your Computer" on page 10. For additional safety best practices information, see the Regulatory Compliance Homepage at dell.com/regulatory_compliance.

Prerequisites

Follow the instructions from step 1 to step 7 in "Removing the Base Cover" on page 11.

Procedure

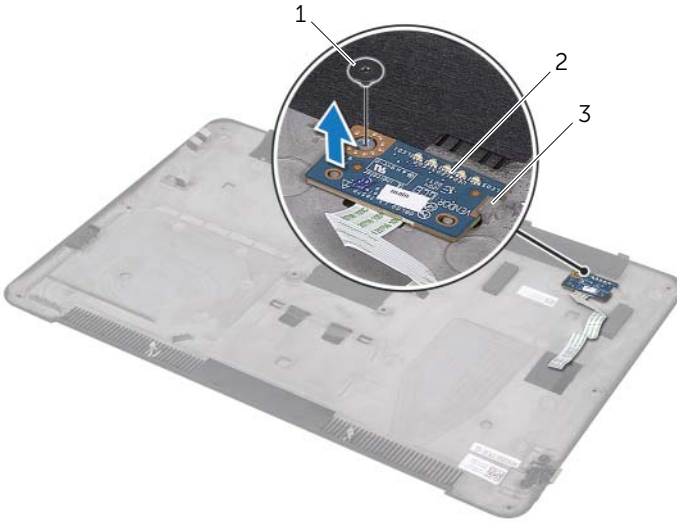
- 1 Remove the screws that secure the battery-LED-board bracket to the base cover.
- 2 Lift the battery-LED-board bracket off the base cover.



1 screws (2)

2 battery-LED-board bracket

- 3 Remove the screw that secures the battery-LED board to the base cover.
- 4 Lift and slide the battery-LED board out of the tab on the base cover.



1	screw	2	battery-LED board
3	tab		

Replacing the Battery-LED Board



WARNING: Before working inside your computer, read the safety information that shipped with your computer and follow the steps in "Before You Begin" on page 8. After working inside your computer, follow the instructions in "After Working Inside Your Computer" on page 10. For additional safety best practices information, see the Regulatory Compliance Homepage at dell.com/regulatory_compliance.

Procedure

- 1 Slide the battery-LED board under the tab on the base cover and use the alignment posts on the base cover to place the battery-LED board in position.
- 2 Replace the screw that secures the battery-LED board to the base cover.
- 3 Align the screw holes on the battery-LED-board bracket with the screw holes on the base cover.
- 4 Replace the screws that secure the battery-LED-board bracket to the base cover.

Postrequisites

Follow the instructions from step 2 to step 7 in "Replacing the Base Cover" on page 14.

Removing the System Badge

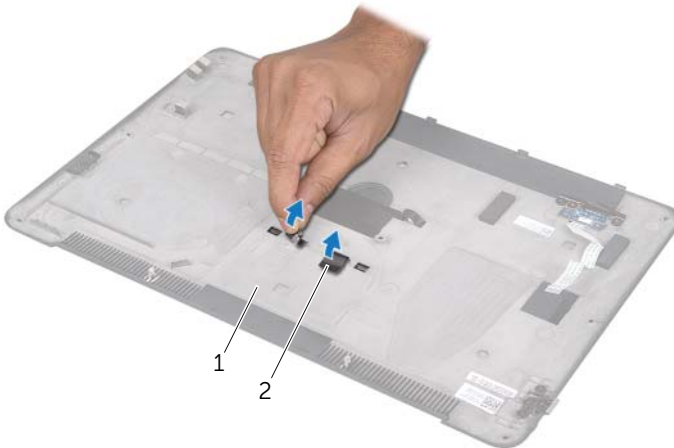
⚠ WARNING: Before working inside your computer, read the safety information that shipped with your computer and follow the steps in "Before You Begin" on page 8. After working inside your computer, follow the instructions in "After Working Inside Your Computer" on page 10. For additional safety best practices information, see the Regulatory Compliance Homepage at dell.com/regulatory_compliance.

Prerequisites

Follow the instructions from step 1 to step 7 in "Removing the Base Cover" on page 11.

Procedure

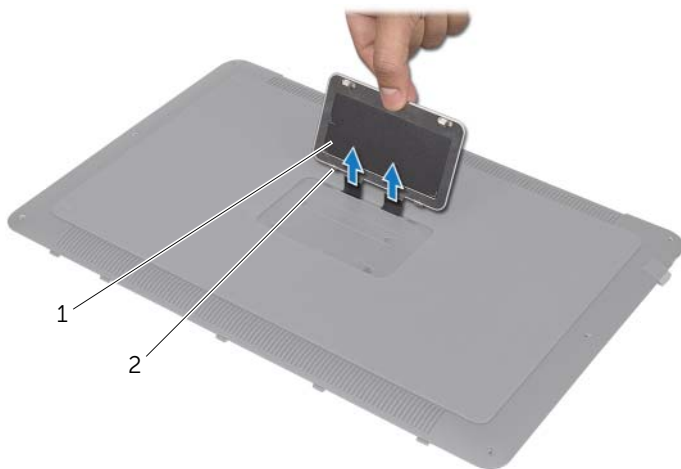
- 1 Peel the tapes that secure the system badge to the base-cover assembly.



1 base-cover assembly

2 tapes (2)

- 2 Turn the base-cover assembly over.
- 3 Starting at the indicator on the base-cover assembly, carefully turn the system badge over.
- 4 Release the tabs on the system badge from the slots on the base-cove assembly.
- 5 Lift the system badge off the base-cover assembly.



1 system badge

2 tabs (2)

Replacing the System Badge



WARNING: Before working inside your computer, read the safety information that shipped with your computer and follow the steps in "Before You Begin" on page 8. After working inside your computer, follow the instructions in "After Working Inside Your Computer" on page 10. For additional safety best practices information, see the Regulatory Compliance Homepage at dell.com/regulatory_compliance.

Procedure

- 1 Slide the tapes on the system badge into the slots on the base-cover assembly.
- 2 Slide the tabs on the system badge into the slots on the base-cover assembly and snap the system badge into place.
- 3 Turn the base-cover assembly over.
- 4 Adhere the tapes to secure the system badge to the base-cover assembly.

Postrequisites

Follow the instructions from step 2 to step 7 in "Replacing the Base Cover" on page 14.

Removing the Battery

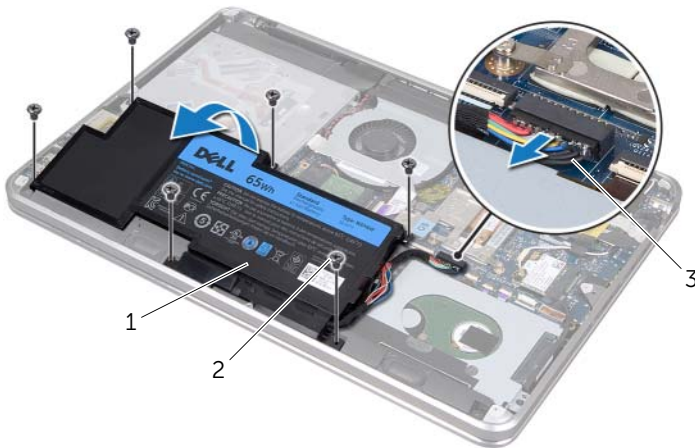
⚠ WARNING: Before working inside your computer, read the safety information that shipped with your computer and follow the steps in "Before You Begin" on page 8. After working inside your computer, follow the instructions in "After Working Inside Your Computer" on page 10. For additional safety best practices information, see the Regulatory Compliance Homepage at dell.com/regulatory_compliance.

Prerequisites

Follow the instructions from step 1 to step 7 in "Removing the Base Cover" on page 11.

Procedure

- 1 Disconnect the battery cable from the system board.
- 2 Remove the screws that secure the battery to the palm-rest assembly.
- 3 Lift the battery off the palm-rest assembly.
- 4 Turn the computer over and open the display as far as possible.



1	battery	2	screws (6)
3	battery cable		

- 5 Press and hold the power button for about 5 seconds to ground the system board.

Replacing the Battery



WARNING: Before working inside your computer, read the safety information that shipped with your computer and follow the steps in "Before You Begin" on page 8. After working inside your computer, follow the instructions in "After Working Inside Your Computer" on page 10. For additional safety best practices information, see the Regulatory Compliance Homepage at dell.com/regulatory_compliance.

Procedure

- 1 Slide the battery under the tab on the palm-rest assembly and align the screw holes on the battery with the screw holes on the palm-rest assembly.
- 2 Replace the screws that secure the battery to the palm-rest assembly.
- 3 Connect the battery cable to the system board.

Postrequisites

Follow the instructions from step 2 to step 7 in "Replacing the Base Cover" on page 14.

Removing the Memory Module(s)



WARNING: Before working inside your computer, read the safety information that shipped with your computer and follow the steps in "Before You Begin" on page 8. After working inside your computer, follow the instructions in "After Working Inside Your Computer" on page 10. For additional safety best practices information, see the Regulatory Compliance Homepage at dell.com/regulatory_compliance.

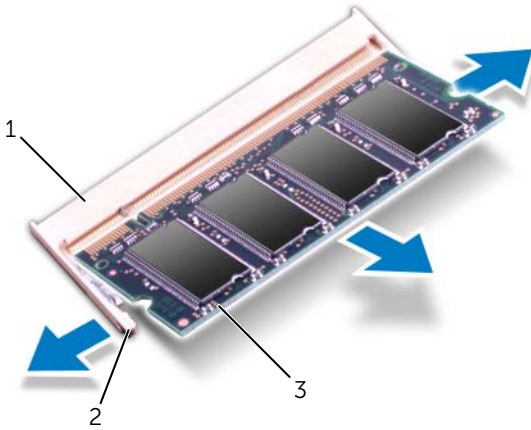
Prerequisites

- 1 Follow the instructions from step 1 to step 7 in "Removing the Base Cover" on page 11.
- 2 Remove the battery. See "Removing the Battery" on page 21.
- 3 If you are removing the secondary memory-module, see "Procedure" on page 24.
- 4 If you are removing the primary memory-module:
 - a Remove the wireless mini-card. See "Removing the Wireless Mini-Card" on page 34.
 - b Follow the instructions from step 1 to step 3 in "Removing the Hard Drive" on page 27.
 - c Remove the fan. See "Removing the Fan" on page 41.
 - d Remove the processor heat-sink. See "Removing the Processor Heat-Sink" on page 43.
 - e Follow the instructions from step 1 to step 10 in "Removing the System Board" on page 53.

Procedure

⚠ CAUTION: To prevent damage to the memory-module connector, do not use tools to spread the memory module securing clips.

- 1 Using your fingertips, carefully spread apart the securing clips on each end of the memory-module connector until the memory module pops up.
- 2 Remove the memory module from the memory-module connector.



1 memory-module connector

2 securing clips (2)

3 memory module

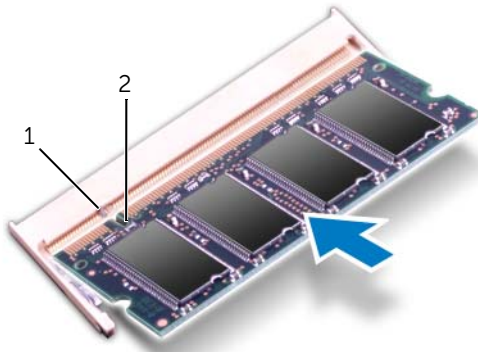
Replacing the Memory Module(s)

⚠ WARNING: Before working inside your computer, read the safety information that shipped with your computer and follow the steps in "Before You Begin" on page 8. After working inside your computer, follow the instructions in "After Working Inside Your Computer" on page 10. For additional safety best practices information, see the Regulatory Compliance Homepage at dell.com/regulatory_compliance.

Procedure

- 1 Align the notch on the memory module with the tab on the memory-module connector.
- 2 Slide the memory module firmly into the connector at a 45-degree angle, and press the memory module down until it clicks into place. If you do not hear the click, remove the memory module and reinstall it.

📎 NOTE: If the memory module is not installed properly, the computer may not boot.



1 tab


2 notch

Postrequisites

- 1 If you are replacing the secondary memory-module, go to step 3.
- 2 If you are replacing the primary memory-module:
 - a Follow the instructions from step 2 to step 10 in "Replacing the System Board" on page 57.
 - b Replace the processor heat-sink. See "Replacing the Processor Heat-Sink" on page 44.
 - c Replace the fan. See "Replacing the Fan" on page 42.
 - d Follow the instructions from step 4 to step 6 in "Replacing the Hard Drive" on page 29.
 - e Replace the wireless mini-card. See "Replacing the Wireless Mini-Card" on page 35.
- 3 Replace the battery. See "Replacing the Battery" on page 22.
- 4 Follow the instructions from step 2 to step 7 in "Replacing the Base Cover" on page 14.
- 5 Turn on your computer.

As the computer boots, it detects the memory module(s) and automatically updates the system configuration information.

To confirm the amount of memory installed on your computer:

Click **Start**  → **Control Panel** → **System and Security** → **System**.

Removing the Hard Drive

⚠ WARNING: Before working inside your computer, read the safety information that shipped with your computer and follow the steps in "Before You Begin" on page 8. After working inside your computer, follow the instructions in "After Working Inside Your Computer" on page 10. For additional safety best practices information, see the Regulatory Compliance Homepage at dell.com/regulatory_compliance.

⚠ CAUTION: To avoid data loss, do not remove the hard drive while the computer is On or in Sleep state.

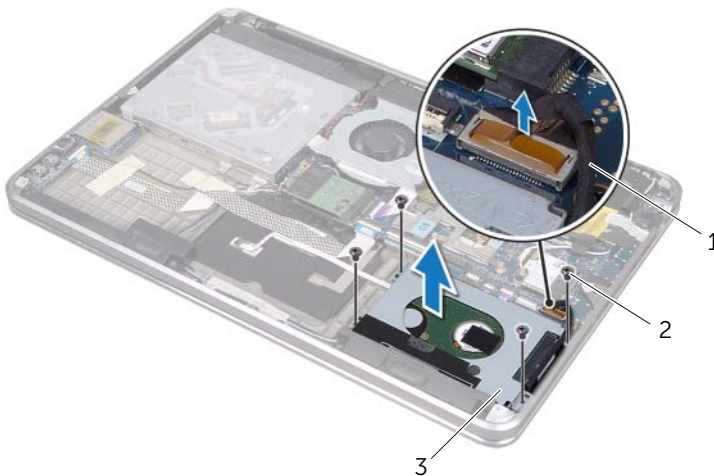
⚠ CAUTION: Hard drives are extremely fragile. Exercise care when handling the hard drive.

Prerequisites

- 1 Follow the instructions from step 1 to step 7 in "Removing the Base Cover" on page 11.
- 2 Remove the battery. See "Removing the Battery" on page 21.

Procedure

- 1 Remove the screws that secure the hard-drive assembly to the palm-rest assembly.
- 2 Disconnect the hard-drive cable from the system board.
- 3 Lift the hard-drive assembly off the palm-rest assembly.

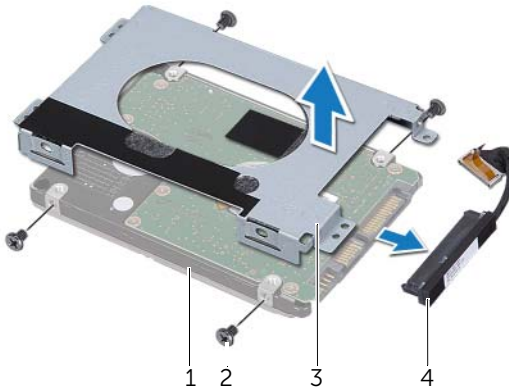


1 hard-drive cable

2 screws (4)

3 hard-drive assembly

- 4 Disconnect the interposer from the hard-drive assembly.
- 5 Remove the screws that secure the hard-drive bracket to the hard drive.
- 6 Lift the hard-drive bracket off the hard drive.



1	hard drive	2	screws (4)
3	hard-drive bracket	4	interposer

Replacing the Hard Drive



WARNING: Before working inside your computer, read the safety information that shipped with your computer and follow the steps in "Before You Begin" on page 8. After working inside your computer, follow the instructions in "After Working Inside Your Computer" on page 10. For additional safety best practices information, see the Regulatory Compliance Homepage at dell.com/regulatory_compliance.



CAUTION: Hard drives are extremely fragile. Exercise care when handling the hard drive.

Procedure

- 1 Align the screw holes on the hard drive-bracket with the screw holes on the hard drive.
- 2 Replace the screws that secure the hard-drive bracket to the hard drive.
- 3 Connect the interposer to the hard-drive assembly.
- 4 Align the screw holes on the hard-drive assembly with the screw holes on the palm-rest assembly.
- 5 Replace the screws that secure the hard-drive assembly to the palm-rest assembly.
- 6 Connect the hard-drive cable to the system board.

Postrequisites

- 1 Replace the battery. See "Replacing the Battery" on page 22.
- 2 Follow the instructions from step 2 to step 7 in "Replacing the Base Cover" on page 14.

Removing the Optical Drive

⚠ WARNING: Before working inside your computer, read the safety information that shipped with your computer and follow the steps in "Before You Begin" on page 8. After working inside your computer, follow the instructions in "After Working Inside Your Computer" on page 10. For additional safety best practices information, see the Regulatory Compliance Homepage at dell.com/regulatory_compliance.

Prerequisites

- 1 Follow the instructions from step 1 to step 7 in "Removing the Base Cover" on page 11.
- 2 Remove the battery. See "Removing the Battery" on page 21.

Procedure

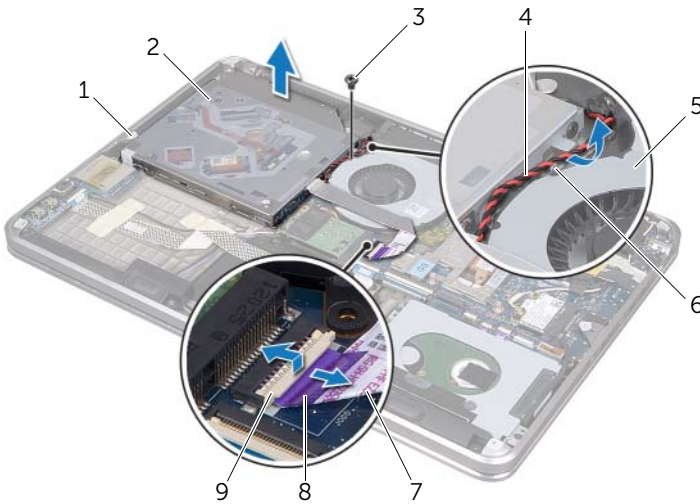
- 1 Peel the mylar from the optical-drive assembly.



1 optical-drive assembly

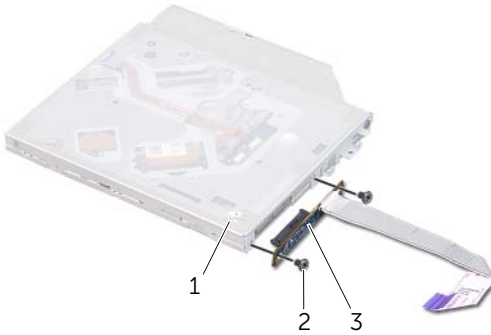
2 mylar

- 2 Lift the connector latch and, using the pull-tab, disconnect the optical-drive cable from the system board.
- 3 Peel the optical-drive cable from the fan.
- 4 Remove the coin-cell-battery cable from the routing guides on the optical-drive bracket.
- 5 Remove the screw that secures the optical-drive assembly to the palm-rest assembly.
- 6 Lift the optical-drive assembly at an angle and release it from the tab on the palm-rest assembly.



1	tab	2	optical-drive assembly
3	screw	4	coin-cell-battery cable
5	fan	6	routing guide
7	optical-drive cable	8	pull-tab
9	connector latch		

- 7 Remove the screws that secure the interposer to the optical-drive assembly.
- 8 Disconnect the interposer from the optical-drive assembly.



1	optical-drive assembly	2	screws (2)
3	interposer		

- 9 Remove the screw that secures the optical-drive bracket to the optical drive.
- 10 Remove the optical-drive bracket from the optical drive.



1	optical drive	2	optical-drive bracket
3	screw		

Replacing the Optical Drive



WARNING: Before working inside your computer, read the safety information that shipped with your computer and follow the steps in "Before You Begin" on page 8. After working inside your computer, follow the instructions in "After Working Inside Your Computer" on page 10. For additional safety best practices information, see the Regulatory Compliance Homepage at dell.com/regulatory_compliance.

Procedure

- 1 Align the screw holes on the optical-drive bracket with the screw holes on the optical drive.
- 2 Replace the screw that secures the optical-drive bracket to the optical drive.
- 3 Connect the interposer to the optical-drive assembly.
- 4 Replace the screws that secure the interposer to the optical-drive assembly.
- 5 Slide the optical-drive assembly under the tab on the palm-rest assembly and align the screw hole on the optical-drive assembly with the screw hole on the palm-rest assembly.
- 6 Replace the screw that secures the optical-drive assembly to the palm-rest assembly.
- 7 Route the coin-cell-battery cable through the routing guides on the optical-drive bracket.
- 8 Adhere the optical-drive cable to the fan.
- 9 Slide the optical-drive cable into the system board and press down on the connector latch to secure the cable.
- 10 Adhere the mylar to the optical-drive assembly.

Postrequisites

- 1 Replace the battery. See "Replacing the Battery" on page 22.
- 2 Follow the instructions from step 2 to step 7 in "Replacing the Base Cover" on page 14.

Removing the Wireless Mini-Card

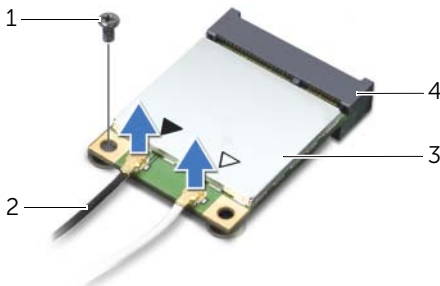
⚠ WARNING: Before working inside your computer, read the safety information that shipped with your computer and follow the steps in "Before You Begin" on page 8. After working inside your computer, follow the instructions in "After Working Inside Your Computer" on page 10. For additional safety best practices information, see the Regulatory Compliance Homepage at dell.com/regulatory_compliance.

Prerequisites

- 1 Follow the instructions from step 1 to step 7 in "Removing the Base Cover" on page 11.
- 2 Remove the battery. See "Removing the Battery" on page 21.

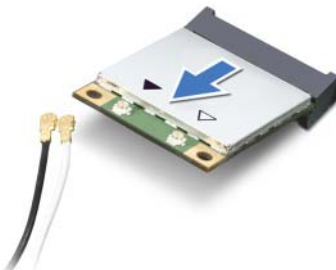
Procedure

- 1 Disconnect the antenna cables from wireless mini-card.
- 2 Remove the screw that secures the wireless mini-card to the system board.



1	screw	2	antenna cables (2)
3	wireless mini-card	4	wireless mini-card connector

- 3 Slide and remove the wireless mini-card out of the system board.



Replacing the Wireless Mini-Card

⚠ WARNING: Before working inside your computer, read the safety information that shipped with your computer and follow the steps in "Before You Begin" on page 8. After working inside your computer, follow the instructions in "After Working Inside Your Computer" on page 10. For additional safety best practices information, see the Regulatory Compliance Homepage at dell.com/regulatory_compliance.

Procedure

- 1 Align the notch on the wireless mini-card with the tab on the wireless mini-card connector.

⚠ CAUTION: Use firm and even pressure to slide the wireless mini-card into place. If you use excessive force, you may damage the connector.

⚠ CAUTION: The connectors are keyed to ensure correct insertion. If you feel resistance, check the connectors on the wireless mini-card and on the system board, and realign the wireless mini-card.

⚠ CAUTION: To avoid damage to the wireless mini-card, never place cables under the wireless mini-card.

- 2 Insert the wireless mini-card connector at a 45-degree angle into the wireless mini-card connector.
- 3 Press the other end of the wireless mini-card down into the slot on the system board and replace the screw that secures the wireless mini-card to the system board.
- 4 Connect the antenna cables to the wireless mini-card.

The following table provides the antenna-cable color scheme for the wireless mini-card supported by your computer.

Connectors on the wireless mini-card	Antenna Cable Color Scheme
WLAN + Bluetooth (2 cables)	
Main WLAN + Bluetooth (white triangle)	white
Auxiliary WLAN + Bluetooth (black triangle)	black

Postrequisites

- 1 Replace the battery. See "Replacing the Battery" on page 22.
- 2 Follow the instructions from step 2 to step 7 in "Replacing the Base Cover" on page 14.

Removing the mSATA Card

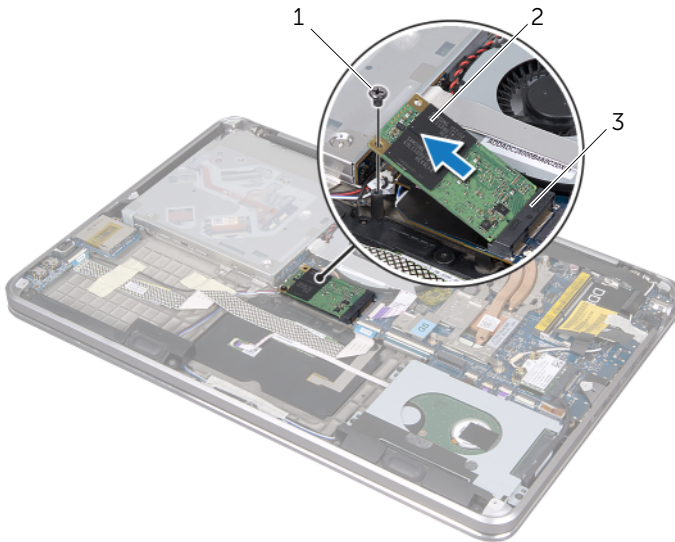
⚠ WARNING: Before working inside your computer, read the safety information that shipped with your computer and follow the steps in "Before You Begin" on page 8. After working inside your computer, follow the instructions in "After Working Inside Your Computer" on page 10. For additional safety best practices information, see the Regulatory Compliance Homepage at dell.com/regulatory_compliance.

Prerequisites

- 1 Follow the instructions from step 1 to step 7 in "Removing the Base Cover" on page 11.
- 2 Remove the battery. See "Removing the Battery" on page 21.

Procedure

- 1 Remove the screw that secures the mSATA card to the palm-rest assembly.
- 2 Slide and remove the mSATA card from the system board.



1 screw

2 mSATA card

3 mSATA-card connector

Replacing the mSATA Card



WARNING: Before working inside your computer, read the safety information that shipped with your computer and follow the steps in "Before You Begin" on page 8. After working inside your computer, follow the instructions in "After Working Inside Your Computer" on page 10. For additional safety best practices information, see the Regulatory Compliance Homepage at dell.com/regulatory_compliance.

Procedure

- 1 Align the notch on the mSATA card with the tab on the mSATA-card connector.
- 2 Insert the mSATA card at a 45-degree angle into the mSATA-card connector.
- 3 Press the other end of the mSATA card down and replace the screw that secures the mSATA card to the palm-rest assembly.

Postrequisites

- 1 Replace the battery. See "Replacing the Battery" on page 22.
- 2 Follow the instructions from step 2 to step 7 in "Replacing the Base Cover" on page 14.

Removing the Coin-Cell Battery

⚠ WARNING: Before working inside your computer, read the safety information that shipped with your computer and follow the steps in "Before You Begin" on page 8. After working inside your computer, follow the instructions in "After Working Inside Your Computer" on page 10. For additional safety best practices information, see the Regulatory Compliance Homepage at dell.com/regulatory_compliance.

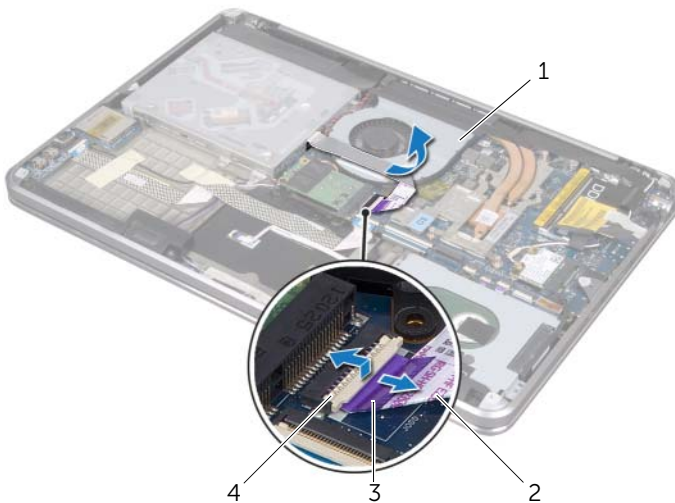
Prerequisites

- 1 Follow the instructions from step 1 to step 7 in "Removing the Base Cover" on page 11.
- 2 Remove the battery. See "Removing the Battery" on page 21.

Procedure

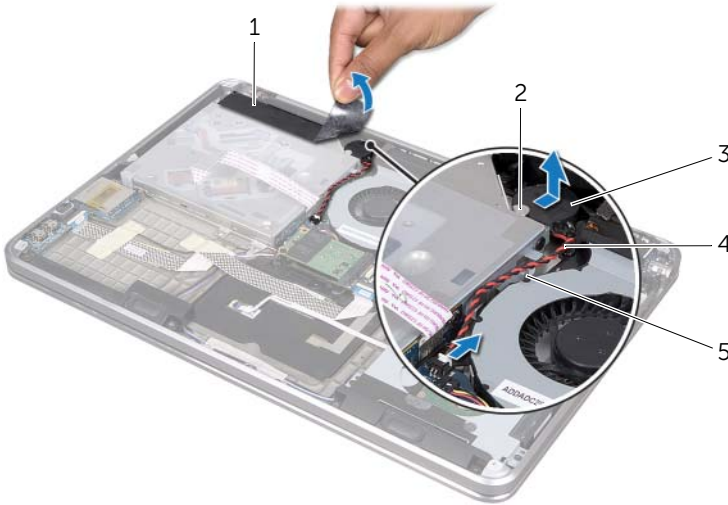
⚠ CAUTION: Removing the coin-cell battery resets the BIOS settings to default. It is recommended that you note the BIOS settings before removing the coin-cell battery.

- 1 Lift the connector latch and, using the pull-tab, disconnect the optical-drive cable from the system board.
- 2 Peel the optical-drive cable from the fan.




1	fan	2	optical-drive cable
3	pull-tab	4	connector latch


- 3 Peel the mylar from the coin-cell battery.
- 4 Disconnect the coin-cell-battery cable from the system board.
- 5 Note the coin-cell battery-cable routing and remove the cable from the optical-drive bracket.
- 6 Peel the coin-cell battery from the palm-rest assembly.
- 7 Lift the coin-cell battery and remove it from the tab on the keyboard bracket.



1	mylar	2	tab
3	coin-cell battery	4	coin-cell battery cable
5	routing guide		

Replacing the Coin-Cell Battery

 **WARNING:** Before working inside your computer, read the safety information that shipped with your computer and follow the steps in "Before You Begin" on page 8. After working inside your computer, follow the instructions in "After Working Inside Your Computer" on page 10. For additional safety best practices information, see the Regulatory Compliance Homepage at dell.com/regulatory_compliance.

 **WARNING:** The battery may explode if installed incorrectly. Replace the battery only with the same or equivalent type. Discard used batteries according to the manufacturer's instructions.

Procedure

- 1 Slide the coin-cell battery under the tab on the keyboard bracket and adhere it to the palm-rest assembly.
- 2 Route the coin-cell-battery cable through the routing guides on the optical-drive bracket.
- 3 Connect the coin-cell battery cable to the system board.
- 4 Adhere the mylar to the coin-cell battery.
- 5 Adhere the optical-drive cable to the fan.
- 6 Slide the optical-drive cable into the system board and press down on the connector latch to secure the cable.

Postrequisites

- 1 Replace the battery. See "Replacing the Battery" on page 22.
- 2 Follow the instructions from step 2 to step 7 in "Replacing the Base Cover" on page 14.

Removing the Fan

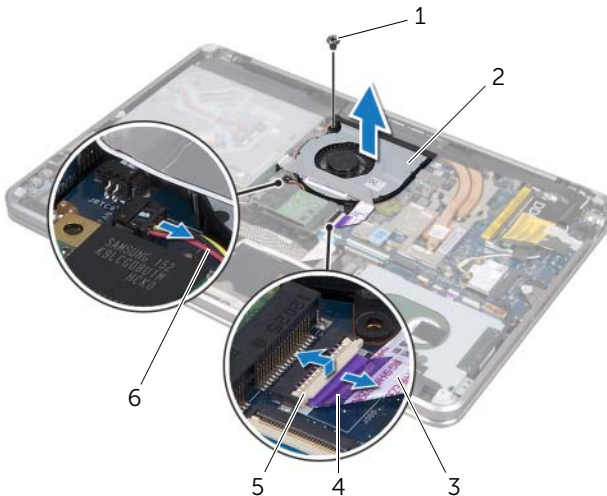
⚠ WARNING: Before working inside your computer, read the safety information that shipped with your computer and follow the steps in "Before You Begin" on page 8. After working inside your computer, follow the instructions in "After Working Inside Your Computer" on page 10. For additional safety best practices information, see the Regulatory Compliance Homepage at dell.com/regulatory_compliance.

Prerequisites

- 1 Follow the instructions from step 1 to step 7 in "Removing the Base Cover" on page 11.
- 2 Remove the battery. See "Removing the Battery" on page 21.

Procedure

- 1 Lift the connector latch and, using the pull-tab, disconnect the optical-drive cable from the system board.
- 2 Peel the optical-drive cable from the fan.
- 3 Disconnect the fan cable from the system board.
- 4 Remove the screw that secures the fan to the palm-rest assembly.
- 5 Lift the fan, along with its cable, away from the palm-rest assembly.



1	screw	2	fan
3	optical-drive cable	4	pull-tab
5	connector latch	6	fan cable

Replacing the Fan



WARNING: Before working inside your computer, read the safety information that shipped with your computer and follow the steps in "Before You Begin" on page 8. After working inside your computer, follow the instructions in "After Working Inside Your Computer" on page 10. For additional safety best practices information, see the Regulatory Compliance Homepage at dell.com/regulatory_compliance.

Procedure

- 1 Align the screw holes on the fan with the screw holes on the palm-rest assembly.
- 2 Replace the screw that secures the fan to palm-rest assembly.
- 3 Connect the fan cable to the system board.
- 4 Adhere the optical-drive cable to the fan.
- 5 Slide the optical-drive cable into the optical-drive cable connector and press down on the connector latch to secure the cable.

Postrequisites

- 1 Replace the battery. See "Replacing the Battery" on page 22.
- 2 Follow the instructions from step 2 to step 7 in "Replacing the Base Cover" on page 14.

Removing the Processor Heat-Sink

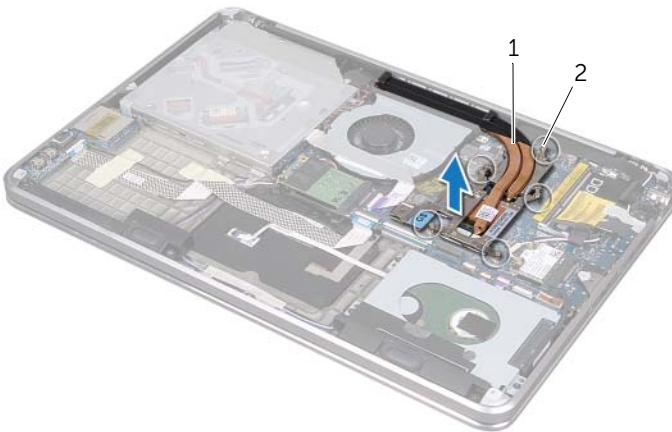
⚠ WARNING: Before working inside your computer, read the safety information that shipped with your computer and follow the steps in "Before You Begin" on page 8. After working inside your computer, follow the instructions in "After Working Inside Your Computer" on page 10. For additional safety best practices information, see the Regulatory Compliance Homepage at dell.com/regulatory_compliance.

Prerequisites

- 1 Follow the instructions from step 1 to step 7 in "Removing the Base Cover" on page 11.
- 2 Remove the battery. See "Removing the Battery" on page 21.

Procedure

- 1 In sequential order (indicated on the heat sink), loosen the captive screws that secure the processor heat-sink to the system board.
- 2 Lift the processor heat-sink off the system board.



1 processor heat-sink

2 captive screws (5)

Replacing the Processor Heat-Sink



WARNING: Before working inside your computer, read the safety information that shipped with your computer and follow the steps in "Before You Begin" on page 8. After working inside your computer, follow the instructions in "After Working Inside Your Computer" on page 10. For additional safety best practices information, see the Regulatory Compliance Homepage at dell.com/regulatory_compliance.

Procedure



NOTE: The original thermal grease can be reused, if the original system board and heat sink are reinstalled together. If either the system board or the heat sink is replaced, use the thermal pad provided in the kit to ensure that thermal conductivity is achieved.

- 1 Clean the thermal grease from the bottom of the processor heat-sink and reapply it.
- 2 Align the screw holes on the processor heat-sink with the screw holes on the system board.
- 3 In sequential order (indicated on the heat sink), tighten the captive screws that secure the processor heat-sink to the system board.

Postrequisites

- 1 Replace the battery. See "Replacing the Battery" on page 22.
- 2 Follow the instructions from step 2 to step 7 in "Replacing the Base Cover" on page 14.

Removing the I/O Board

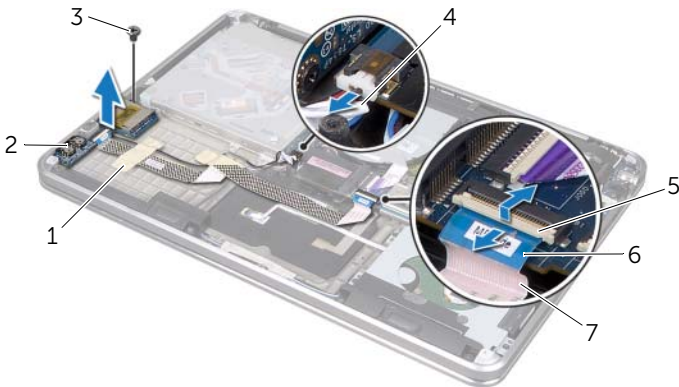
⚠ WARNING: Before working inside your computer, read the safety information that shipped with your computer and follow the steps in "Before You Begin" on page 8. After working inside your computer, follow the instructions in "After Working Inside Your Computer" on page 10. For additional safety best practices information, see the Regulatory Compliance Homepage at dell.com/regulatory_compliance.

Prerequisites

- 1 Follow the instructions from step 1 to step 7 in "Removing the Base Cover" on page 11.
- 2 Remove the battery. See "Removing the Battery" on page 21.
- 3 Remove the mSATA card. See "Removing the mSATA Card" on page 36.

Procedure

- 1 Disconnect the I/O-board grounding cable from the system board.
- 2 Lift the connector latch and, using the pull-tab, disconnect the I/O-board cable from the system board.
- 3 Peel the tapes that secure the I/O-board cable and the I/O-board grounding cable to the palm-rest assembly.
- 4 Remove the screw that secures the I/O board to the palm-rest assembly.
- 5 Lift the I/O board along with its cables away from the palm-rest assembly.



1	tapes (2)	2	I/O board
3	screw	4	I/O-board grounding cable
5	connector latch	6	pull-tab
7	I/O-board cable		

Replacing the I/O Board



WARNING: Before working inside your computer, read the safety information that shipped with your computer and follow the steps in "Before You Begin" on page 8. After working inside your computer, follow the instructions in "After Working Inside Your Computer" on page 10. For additional safety best practices information, see the Regulatory Compliance Homepage at dell.com/regulatory_compliance.

Procedure

- 1 Align the screw hole on the I/O board with the screw hole on the palm-rest assembly.
- 2 Replace the screw that secures the I/O board to the palm-rest assembly.
- 3 Route the I/O-board cable and I/O-board grounding cable on the palm-rest assembly and adhere the tapes to secure the cables.
- 4 Slide the I/O-board cable into the I/O-board cable connector and press down on the connector latch to secure the cable.
- 5 Connect the I/O-board grounding cable to the system board.

Postrequisites

- 1 Replace the mSATA card. See "Replacing the mSATA Card" on page 37.
- 2 Replace the battery. See "Replacing the Battery" on page 22.
- 3 Follow the instructions from step 2 to step 7 in "Replacing the Base Cover" on page 14.

Removing the Speakers



WARNING: Before working inside your computer, read the safety information that shipped with your computer and follow the steps in "Before You Begin" on page 8. After working inside your computer, follow the instructions in "After Working Inside Your Computer" on page 10. For additional safety best practices information, see the Regulatory Compliance Homepage at dell.com/regulatory_compliance.

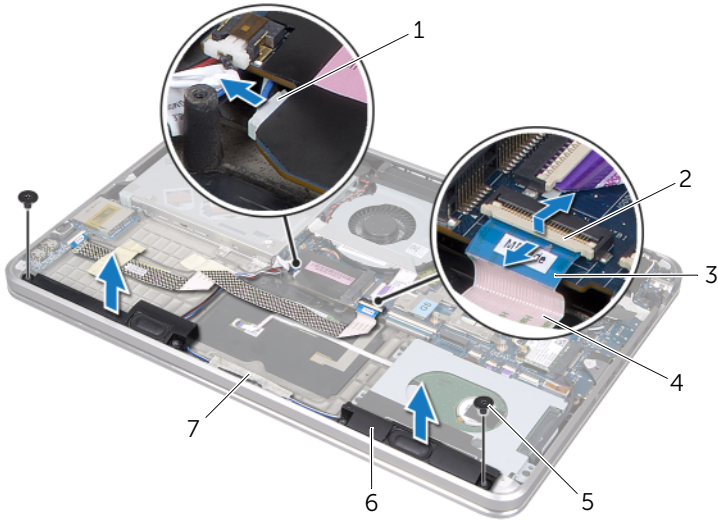
Prerequisites

- 1 Follow the instructions from step 1 to step 7 in "Removing the Base Cover" on page 11.
- 2 Remove the battery. See "Removing the Battery" on page 21.
- 3 Remove the mSATA card. See "Removing the mSATA Card" on page 36.

Procedure

- 1 Lift the connector latch and, using the pull-tab, disconnect the I/O-board cable from the I/O-board cable connector.
- 2 Remove the I/O-board cable from the speaker cable routing.
- 3 Disconnect the speaker cable from the system board.
- 4 Remove the screws that secure the speakers to the palm-rest assembly.
- 5 Note the speaker cable routing and peel the tape from the speaker cable.

6 Lift the speakers, along with the speaker cable, away from the palm-rest assembly.




1	speaker cable	2	connector latch
3	pull-tab	4	I/O-board cable
5	screws (2)	6	speakers (2)
7	tape		

Replacing the Speakers



WARNING: Before working inside your computer, read the safety information that shipped with your computer and follow the steps in "Before You Begin" on page 8. After working inside your computer, follow the instructions in "After Working Inside Your Computer" on page 10. For additional safety best practices information, see the Regulatory Compliance Homepage at dell.com/regulatory_compliance.

Procedure

- 1 Use the alignment posts on the palm-rest assembly to place the speakers in position.
 **NOTE:** Ensure that the speakers are secured by the alignment posts.
- 2 Route the speaker cable on the palm-rest assembly and adhere the tape to secure the speaker cable.
- 3 Replace the screws that secure the speakers to the palm-rest assembly.
- 4 Route the speaker cable on the palm-rest assembly and connect the speaker cable to the system board.
- 5 Route the I/O-board cable on the palm-rest assembly.
- 6 Slide the I/O-board cable into the I/O-board connector and press down the connector latch to secure the cable.

Postrequisites

- 1 Replace the mSATA card. See "Replacing the mSATA Card" on page 37.
- 2 Replace the battery. See "Replacing the Battery" on page 22.
- 3 Follow the instructions from step 2 to step 7 in "Replacing the Base Cover" on page 14.

Removing the Power/Battery Status-Light Board



WARNING: Before working inside your computer, read the safety information that shipped with your computer and follow the steps in "Before You Begin" on page 8. After working inside your computer, follow the instructions in "After Working Inside Your Computer" on page 10. For additional safety best practices information, see the Regulatory Compliance Homepage at dell.com/regulatory_compliance.

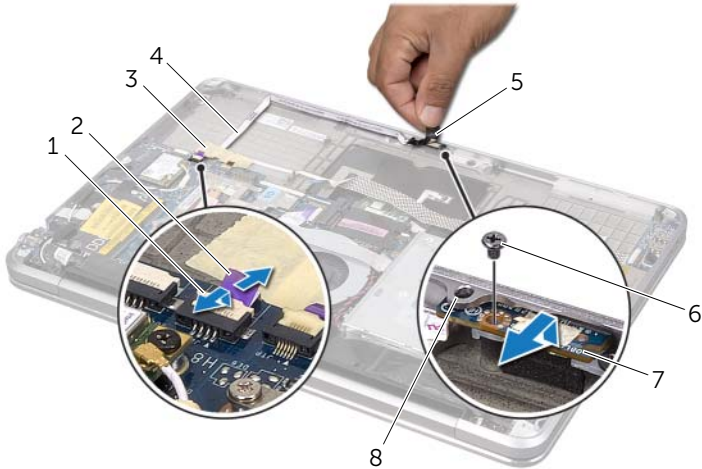
Prerequisites

- 1 Follow the instructions from step 1 to step 7 in "Removing the Base Cover" on page 11.
- 2 Remove the battery. See "Removing the Battery" on page 21.
- 3 Remove the speakers. See "Removing the Speakers" on page 47.

Procedure

- 1 Peel the mylar from the power/battery-status-light board.
- 2 Lift the connector latch and, using the pull-tab, disconnect the power/battery status-light cable from the system board.
- 3 Note the location of the tape and peel it from the power/battery status-light cable.
- 4 Remove the screw that secures the power/battery status-light board to the palm-rest assembly.

- 5 Lift the power/battery status-light board at an angle to remove it from the tab on the palm-rest assembly, and lift the power/battery status-light board along with its cable off the palm-rest assembly.



1	connector latch	2	pull-tab
3	tape	4	power/battery status-light cable
5	mylar	6	screw
7	power/battery status-light board	8	tab

Replacing the Power/Battery Status-Light Board



WARNING: Before working inside your computer, read the safety information that shipped with your computer and follow the steps in "Before You Begin" on page 8. After working inside your computer, follow the instructions in "After Working Inside Your Computer" on page 10. For additional safety best practices information, see the Regulatory Compliance Homepage at dell.com/regulatory_compliance.

Procedure

- 1 Slide the power/battery status-light board under the tab on the palm-rest assembly and align the screw hole on the power/battery status-light board with the screw hole on the palm-rest assembly.
- 2 Replace the screw that secures the power/battery status-light board to the palm-rest assembly.
- 3 Route the power/battery status-light cable on the palm-rest assembly and secure the cable with the tape.
- 4 Slide the power/battery status-light cable into the power/battery status-light connector and press down on the connector latch to secure the cable.
- 5 Adhere the mylar to the power/battery status-light board.

Postrequisites

- 1 Replace the speakers. See "Replacing the Speakers" on page 49.
- 2 Replace the battery. See "Replacing the Battery" on page 22.
- 3 Follow the instructions from step 2 to step 7 in "Replacing the Base Cover" on page 14.

Removing the System Board



WARNING: Before working inside your computer, read the safety information that shipped with your computer and follow the steps in "Before You Begin" on page 8. After working inside your computer, follow the instructions in "After Working Inside Your Computer" on page 10. For additional safety best practices information, see the Regulatory Compliance Homepage at dell.com/regulatory_compliance.

Prerequisites

- 1 Follow the instructions from step 1 to step 7 in "Removing the Base Cover" on page 11.
- 2 Remove the battery. See "Removing the Battery" on page 21.
- 3 Remove the secondary memory-module. See "Removing the Memory Module(s)" on page 23.
- 4 Remove the wireless mini-card. See "Removing the Wireless Mini-Card" on page 34.
- 5 Remove the mSATA card. See "Removing the mSATA Card" on page 36.
- 6 Follow the instructions from step 1 to step 3 in "Removing the Hard Drive" on page 27.
- 7 Remove the fan. See "Removing the Fan" on page 41.
- 8 Remove the processor heat-sink. See "Removing the Processor Heat-Sink" on page 43.

Procedure

NOTE: Your computer's Service Tag is stored under the system badge. You must enter the Service Tag in the BIOS after you replace the system board.

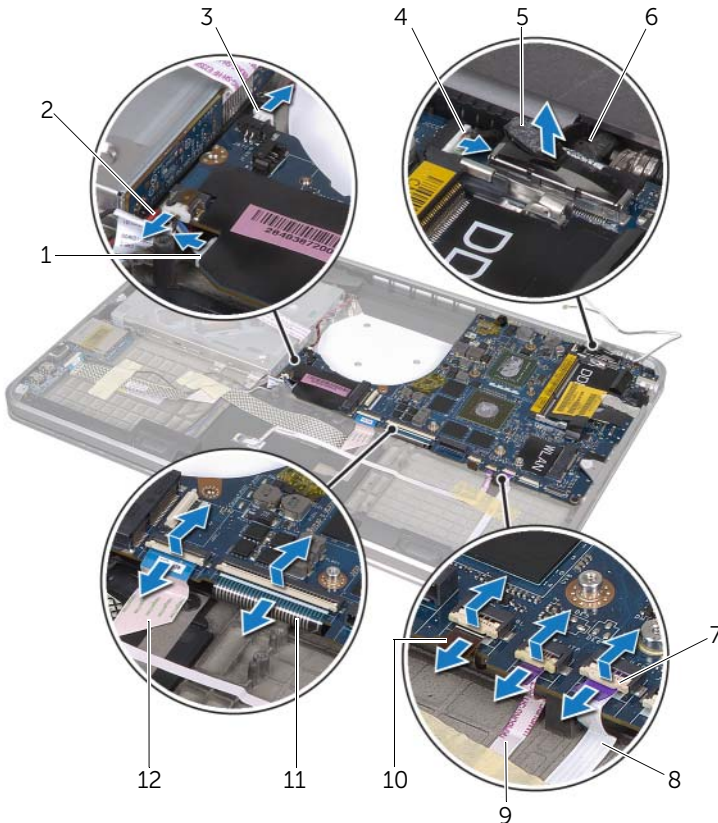
NOTE: Before disconnecting the cables from the system board, note the location of the connectors so that you can reconnect them correctly after you replace the system board.

- 1 Peel the mylar from the system board.
- 2 Note the routing of the antenna cables and remove the cables from their routing guides.



1	mylar	2	routing guides (2)
3	antenna cables (2)		

- 3 Using the pull-tab, disconnect the display cable from the system board.
- 4 Disconnect the speaker cable, coin-cell-battery cable, I/O-board grounding cable, and camera cable from the system board.
- 5 Lift the connector latches and, using the pull-tab, disconnect the I/O-board cable, keyboard cable, keyboard-backlight cable, touchpad cable, and power/battery status-light cable from the system board.



1	speaker cable	2	I/O-board grounding cable
3	coin-cell-battery cable	4	camera cable
5	pull-tabs (6)	6	display cable
7	connector latches (3)	8	power/battery status-light cable
9	touchpad cable	10	keyboard-backlight cable
11	keyboard cable	12	I/O-board cable

- 6 Remove the screws that secure the system-board assembly to the palm-rest assembly.
- 7 Lift the system-board assembly at an angle and release the ports on the system board from the slots on the palm-rest assembly.
- 8 Slide and remove the system-board assembly from the tab on the palm-rest assembly.



1	screws (5)	2	system-board assembly
3	tab		


- 9 Turn the system-board assembly over.
- 10 Remove the primary memory-module by following the instructions from step 1 to step 2 in "Removing the Memory Module(s)" on page 23.

Replacing the System Board



WARNING: Before working inside your computer, read the safety information that shipped with your computer and follow the steps in "Before You Begin" on page 8. After working inside your computer, follow the instructions in "After Working Inside Your Computer" on page 10. For additional safety best practices information, see the Regulatory Compliance Homepage at dell.com/regulatory_compliance.

Procedure

- 1 Replace the primary memory-module by following the instructions from step 1 to step 2 in "Replacing the Memory Module(s)" on page 25.
- 2 Turn the system-board assembly over.
- 3 Slide the system-board ports under the tab and into the slots on the palm-rest assembly.
- 4 Align the screw holes on the system-board assembly with the screw holes on the palm-rest assembly.
 **NOTE:** Ensure that no cables are under the system-board assembly.
- 5 Replace the screws that secure the system-board assembly to the palm-rest assembly.
- 6 Slide the I/O-board cable, keyboard cable, keyboard-backlight cable, touchpad cable, and power/battery status-light cable into their connectors and press down on the connector latches to secure the cables.
- 7 Connect the display cable, speaker cable, coin-cell-battery cable, I/O-board grounding cable, and camera cable to the system board.
- 8 Route the antenna cables through the routing guides on the system-board assembly.
- 9 Adhere the mylar to the system-board assembly.

Postrequisites

- 1 Replace the processor heat-sink. See "Replacing the Processor Heat-Sink" on page 44.
- 2 Replace the fan. See "Replacing the Fan" on page 42
- 3 Follow the instructions from step 4 to step 6 in "Replacing the Hard Drive" on page 29.
- 4 Replace the mSATA card. See "Replacing the mSATA Card" on page 37.
- 5 Replace the wireless mini-card. See "Replacing the Wireless Mini-Card" on page 35.
- 6 Replace the secondary memory-module. See "Replacing the Memory Module(s)" on page 25.
- 7 Replace the battery. See "Replacing the Battery" on page 22.
- 8 Follow the instructions from step 2 to step 7 in "Replacing the Base Cover" on page 14.

Entering the Service Tag in BIOS

- 1 Turn on the computer.
- 2 Press <F2> during POST to enter the system setup program.
- 3 Navigate to the main tab and enter the Service Tag in the **Service Tag** field.

Removing the Air Vent



WARNING: Before working inside your computer, read the safety information that shipped with your computer and follow the steps in "Before You Begin" on page 8. After working inside your computer, follow the instructions in "After Working Inside Your Computer" on page 10. For additional safety best practices information, see the Regulatory Compliance Homepage at dell.com/regulatory_compliance.

Prerequisites

- 1 Follow the instructions from step 1 to step 7 in "Removing the Base Cover" on page 11.
- 2 Remove the battery. See "Removing the Battery" on page 21.
- 3 Remove the secondary memory-module. See "Removing the Memory Module(s)" on page 23.
- 4 Remove the wireless mini-card. See "Removing the Wireless Mini-Card" on page 34.
- 5 Remove the mSATA card. See "Removing the mSATA Card" on page 36.
- 6 Follow the instructions from step 1 to step 3 in "Removing the Hard Drive" on page 27.
- 7 Follow the instructions from step 1 to step 6 in "Removing the Optical Drive" on page 30.
- 8 Remove the fan. See "Removing the Fan" on page 41.
- 9 Remove the processor heat-sink. See "Removing the Processor Heat-Sink" on page 43.
- 10 Follow the instructions from step 1 to step 8 in "Removing the System Board" on page 53.

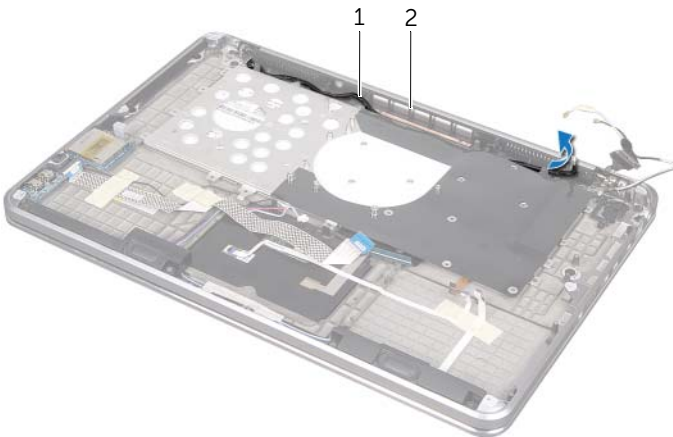
Procedure

- 1 Peel the mylar from the camera-cable routing.



1 mylar

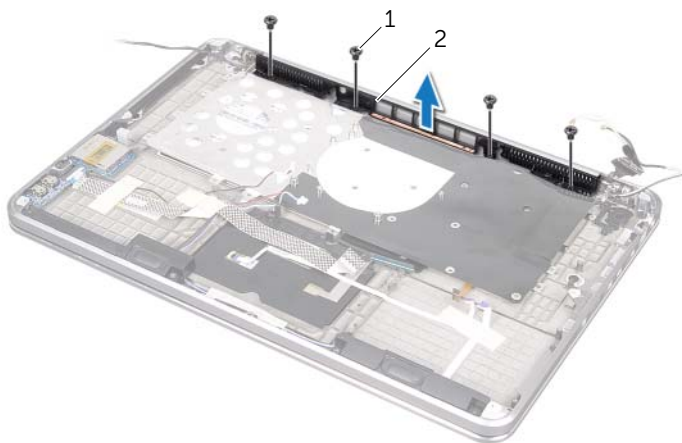
- 2 Note the camera-cable routing and remove the cable from the routing guides on the air vent.



1 camera-cable routing

2 air vent

- 3 Remove the screws that secure the air vent to the palm-rest assembly.
- 4 Lift the air vent off the palm-rest assembly.



1 screws (4)

2 air vent

Replacing the Air Vent



WARNING: Before working inside your computer, read the safety information that shipped with your computer and follow the steps in "Before You Begin" on page 8. After working inside your computer, follow the instructions in "After Working Inside Your Computer" on page 10. For additional safety best practices information, see the Regulatory Compliance Homepage at dell.com/regulatory_compliance.

Procedure

- 1 Align the screw holes on the air vent with the screw holes on the palm-rest assembly.
- 2 Replace the screws that secure the air vent to the palm-rest assembly.
- 3 Route the camera cable through the routing guides on the air vent.
- 4 Adhere the mylar to the camera cable routing.

Postrequisites

- 1 Follow the instructions from step 3 to step 10 in "Replacing the System Board" on page 57.
- 2 Replace the processor heat-sink. See "Replacing the Processor Heat-Sink" on page 44.
- 3 Replace the fan. See "Replacing the Fan" on page 42
- 4 Follow the instructions from step 5 to step 10 in "Replacing the Optical Drive" on page 33.
- 5 Follow the instructions from step 4 to step 6 in "Replacing the Hard Drive" on page 29.
- 6 Replace the mSATA card. See "Replacing the mSATA Card" on page 37.
- 7 Replace the wireless mini-card. See "Replacing the Wireless Mini-Card" on page 35.
- 8 Replace the secondary memory-module. See "Replacing the Memory Module(s)" on page 25.
- 9 Replace the battery. See "Replacing the Battery" on page 22.
- 10 Follow the instructions from step 2 to step 7 in "Replacing the Base Cover" on page 14.

Removing the Keyboard



WARNING: Before working inside your computer, read the safety information that shipped with your computer and follow the steps in "Before You Begin" on page 8. After working inside your computer, follow the instructions in "After Working Inside Your Computer" on page 10. For additional safety best practices information, see the Regulatory Compliance Homepage at dell.com/regulatory_compliance.

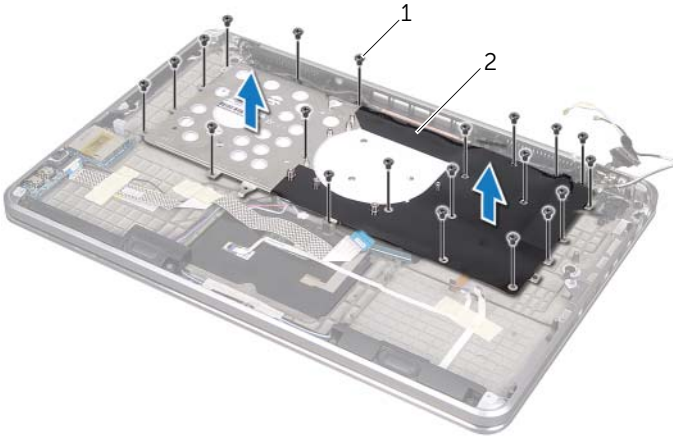
Prerequisites

- 1 Follow the instructions from step 1 to step 7 in "Removing the Base Cover" on page 11.
- 2 Remove the battery. See "Removing the Battery" on page 21.
- 3 Remove the secondary memory-module. See "Removing the Memory Module(s)" on page 23.
- 4 Remove the wireless mini-card. See "Removing the Wireless Mini-Card" on page 34.
- 5 Remove the mSATA card. See "Removing the mSATA Card" on page 36.
- 6 Follow the instructions from step 1 to step 3 in "Removing the Hard Drive" on page 27.
- 7 Follow the instructions from step 1 to step 6 in "Removing the Optical Drive" on page 30.
- 8 Remove the fan. See "Removing the Fan" on page 41.
- 9 Remove the processor heat-sink. See "Removing the Processor Heat-Sink" on page 43.
- 10 Follow the instructions from step 1 to step 8 in "Removing the System Board" on page 53.

Procedure

⚠ CAUTION: The keycaps on the keyboard are fragile, easily dislodged, and time-consuming to replace. Be careful when removing and handling the keyboard.

- 1 Remove the screws that secure the keyboard bracket to the palm-rest assembly.
- 2 Lift the keyboard bracket away from the palm-rest assembly.



1 screws (21)

2 keyboard bracket

- 3 Remove the screws that secure the keyboard to the palm-rest assembly.
- 4 Lift the keyboard off the palm-rest assembly.



1 screws (7)

2 keyboard

Replacing the Keyboard



WARNING: Before working inside your computer, read the safety information that shipped with your computer and follow the steps in "Before You Begin" on page 8. After working inside your computer, follow the instructions in "After Working Inside Your Computer" on page 10. For additional safety best practices information, see the Regulatory Compliance Homepage at dell.com/regulatory_compliance.

Procedure

- 1 Align the screw holes on the keyboard with the screw holes on the palm-rest assembly.
- 2 Replace the screws that secure the keyboard to the palm-rest assembly.
- 3 Align the screw holes on the keyboard bracket with the screw holes on the palm-rest assembly
- 4 Replace the screws that secure the keyboard bracket to the palm-rest assembly.

Postrequisites

- 1 Follow the instructions from step 3 to step 10 in "Replacing the System Board" on page 57.
- 2 Replace the processor heat-sink. See "Replacing the Processor Heat-Sink" on page 44.
- 3 Replace the fan. See "Replacing the Fan" on page 42
- 4 Follow the instructions from step 5 to step 10 in "Replacing the Optical Drive" on page 33.
- 5 Follow the instructions from step 4 to step 6 in "Replacing the Hard Drive" on page 29.
- 6 Replace the mSATA card. See "Replacing the mSATA Card" on page 37.
- 7 Replace the wireless mini-card. See "Replacing the Wireless Mini-Card" on page 35.
- 8 Replace the secondary memory-module. See "Replacing the Memory Module(s)" on page 25.
- 9 Replace the battery. See "Replacing the Battery" on page 22.
- 10 Follow the instructions from step 2 to step 7 in "Replacing the Base Cover" on page 14.

Removing the Display



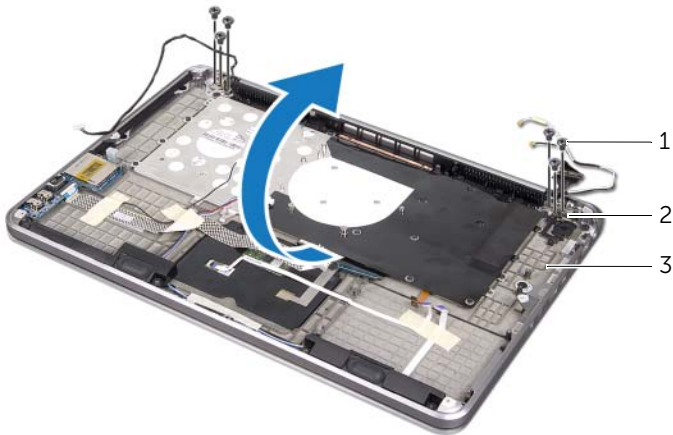
WARNING: Before working inside your computer, read the safety information that shipped with your computer and follow the steps in "Before You Begin" on page 8. After working inside your computer, follow the instructions in "After Working Inside Your Computer" on page 10. For additional safety best practices information, see the Regulatory Compliance Homepage at dell.com/regulatory_compliance.

Prerequisites

- 1 Follow the instructions from step 1 to step 7 in "Removing the Base Cover" on page 11.
- 2 Remove the battery. See "Removing the Battery" on page 21.
- 3 Remove the mSATA card. See "Removing the mSATA Card" on page 36.
- 4 Follow the instructions from step 1 to step 3 in "Removing the Hard Drive" on page 27.
- 5 Follow the instructions from step 1 to step 6 in "Removing the Optical Drive" on page 30.
- 6 Remove the coin-cell battery. See "Removing the Coin-Cell Battery" on page 38.
- 7 Remove the fan. See "Removing the Fan" on page 41.
- 8 Remove the processor heat-sink. See "Removing the Processor Heat-Sink" on page 43.
- 9 Follow the instructions from step 1 to step 8 in "Removing the System Board" on page 53.

Procedure

- 1 Remove the screws that secure the display hinges to the palm-rest assembly.
- 2 Open the palm-rest assembly as far as possible.



1 screws (6)

2 display hinges (2)

3 palm-rest assembly

- 3 Slide and remove the tabs on the palm-rest assembly from the display hinges.



1 palm-rest assembly

2 tabs (2)

3 display

Replacing the Display



WARNING: Before working inside your computer, read the safety information that shipped with your computer and follow the steps in "Before You Begin" on page 8. After working inside your computer, follow the instructions in "After Working Inside Your Computer" on page 10. For additional safety best practices information, see the Regulatory Compliance Homepage at dell.com/regulatory_compliance.

Procedure

- 1 Slide the tabs on the palm-rest assembly under the display hinges and align the screw holes on the palm-rest assembly with the screw holes on the display hinges.
- 2 Replace the screws that secure the palm-rest assembly to the display hinges.
- 3 Close the palm-rest assembly.

Postrequisites

- 1 Follow the instructions from step 3 to step 10 in "Replacing the System Board" on page 57.
- 2 Replace the processor heat-sink. See "Replacing the Processor Heat-Sink" on page 44.
- 3 Replace the fan. See "Replacing the Fan" on page 42.
- 4 Replace the coin-cell battery. See "Replacing the Coin-Cell Battery" on page 40.
- 5 Follow the instructions from step 5 to step 10 in "Replacing the Optical Drive" on page 33.
- 6 Follow the instructions from step 4 to step 6 in "Replacing the Hard Drive" on page 29.
- 7 Replace the mSATA card. See "Replacing the mSATA Card" on page 37.
- 8 Replace the battery. See "Replacing the Battery" on page 22.
- 9 Follow the instructions from step 2 to step 7 in "Replacing the Base Cover" on page 14.

Removing the Palm Rest



WARNING: Before working inside your computer, read the safety information that shipped with your computer and follow the steps in "Before You Begin" on page 8. After working inside your computer, follow the instructions in "After Working Inside Your Computer" on page 10. For additional safety best practices information, see the Regulatory Compliance Homepage at dell.com/regulatory_compliance.

Prerequisites

- 1 Follow the instructions from step 1 to step 7 in "Removing the Base Cover" on page 11.
- 2 Remove the battery. See "Removing the Battery" on page 21.
- 3 Remove the mSATA card. See "Removing the mSATA Card" on page 36.
- 4 Follow the instructions from step 1 to step 3 in "Removing the Hard Drive" on page 27.
- 5 Follow the instructions from step 1 to step 6 in "Removing the Optical Drive" on page 30.
- 6 Remove the coin-cell battery. See "Removing the Coin-Cell Battery" on page 38.
- 7 Remove the fan. See "Removing the Fan" on page 41.
- 8 Remove the processor heat-sink. See "Removing the Processor Heat-Sink" on page 43.
- 9 Remove the I/O board. See "Removing the I/O Board" on page 45.
- 10 Remove the speakers. See "Removing the Speakers" on page 47.
- 11 Remove the power/battery status-light board.
See "Removing the Power/Battery Status-Light Board" on page 50.
- 12 Follow the instructions from step 1 to step 8 in "Removing the System Board" on page 53.
- 13 Remove the air vent. See "Removing the Air Vent" on page 59.
- 14 Remove the keyboard. See "Removing the Keyboard" on page 63.

Procedure

- 1 Remove the screws that secure the palm rest to the display hinges.
- 2 Open the palm rest as far as possible.



1 screws (6)

2 display hinges (2)

3 palm rest

- 3 Slide and remove the palm rest from the display hinges.



1 display

2 tabs (2)

3 palm rest

Replacing the Palm Rest



WARNING: Before working inside your computer, read the safety information that shipped with your computer and follow the steps in "Before You Begin" on page 8. After working inside your computer, follow the instructions in "After Working Inside Your Computer" on page 10. For additional safety best practices information, see the Regulatory Compliance Homepage at dell.com/regulatory_compliance.

Procedure

- 1 Slide the tabs on the palm rest under the display hinges and align the screw holes on the palm rest with the screw holes on the display hinges.
- 2 Replace the screws that secure the palm rest to the display hinges.
- 3 Close the palm rest.

Postrequisites

- 1 Replace the keyboard. See "Replacing the Keyboard" on page 65.
- 2 Replace the air vent. See "Replacing the Air Vent" on page 62.
- 3 Follow the instructions from step 3 to step 10 in "Replacing the System Board" on page 57.
- 4 Replace the power/battery status-light board. See "Replacing the Power/Battery Status-Light Board" on page 52.
- 5 Replace the speakers. See "Replacing the Speakers" on page 49.
- 6 Replace the I/O board. See "Replacing the I/O Board" on page 46.
- 7 Replace the processor heat-sink. See "Replacing the Processor Heat-Sink" on page 44.
- 8 Replace the fan. See "Replacing the Fan" on page 42.
- 9 Replace the coin-cell battery. See "Replacing the Coin-Cell Battery" on page 40.
- 10 Follow the instructions from step 5 to step 10 in "Replacing the Optical Drive" on page 33.
- 11 Follow the instructions from step 4 to step 6 in "Replacing the Hard Drive" on page 29.
- 12 Replace the mSATA card. See "Replacing the mSATA Card" on page 37.
- 13 Replace the battery. See "Replacing the Battery" on page 22.
- 14 Follow the instructions from step 2 to step 7 in "Replacing the Base Cover" on page 14.

Flashing the BIOS

The BIOS may require flashing when an update is available or when replacing the system board. To flash the BIOS:

- 1 Turn on the computer.
- 2 Go to **support.dell.com/support/downloads**.
- 3 Locate the BIOS update file for your computer:



NOTE: The Service Tag for your computer is located on a label beneath the system badge at the back of your computer. For more information on locating the Service Tag, see the *Quick Start Guide* that shipped with your computer.

If you have your computer's Service Tag or Express Service Code:

- a Enter your computer's Service Tag or Express Service Code in the **Service Tag or Express Service Code** field.
- b Click **Submit** and proceed to step 4.

If you do not have your computer's Service Tag or Express Service Code:

- a Select one of the following options:
 - **Automatically detect my Service Tag for me**
 - **Choose from My Products and Services List**
 - **Choose from a list of all Dell products**
 - b Click **Continue** and follow the instructions on the screen.
- 4 A list of results appears on the screen. Click **BIOS**.
 - 5 Click **Download File** to download the latest BIOS file.
 - 6 In the **Please select your download method below** window, click **For Single File Download via Browser**, and then click **Download Now**. The **File Download** windows appears.
 - 7 In the **Save As** window, select an appropriate location to download the file on your computer.
 - 8 If the **Download Complete** window appears, click **Close**.
 - 9 Navigate to the folder where you downloaded the BIOS update file.
 - 10 Double-click the BIOS update file icon and follow the instructions that appear on the screen.

Free Manuals Download Website

<http://myh66.com>

<http://usermanuals.us>

<http://www.somanuals.com>

<http://www.4manuals.cc>

<http://www.manual-lib.com>

<http://www.404manual.com>

<http://www.luxmanual.com>

<http://aubethermostatmanual.com>

Golf course search by state

<http://golfingnear.com>

Email search by domain

<http://emailbydomain.com>

Auto manuals search

<http://auto.somanuals.com>

TV manuals search

<http://tv.somanuals.com>