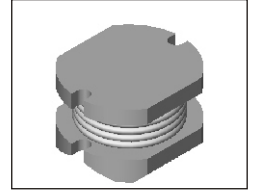


# SMT Power Inductor

## SI415 & SI418 Type

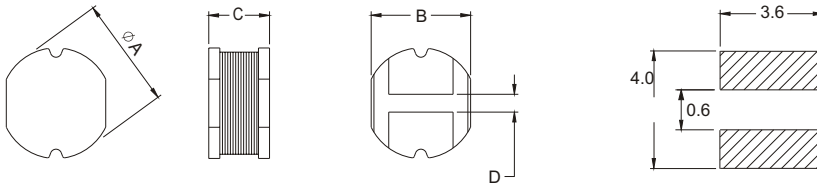
### Features

- RoHS compliant.
- Low profile, SMD type.
- Unshielded.
- Self-leads, suitable for high density mounting.
- High energy storage and low DCR.
- Provided with embossed carrier tape packing.
- Ideal for power source circuits, DC-DC converter, DC-AC inverters inductor applications.
- In addition to the standard versions shown here, customized inductors are available to meet your exact requirements.



### Mechanical Dimension:

RECOMMENDED PAD PATTERNS



UNIT:mm/inch  
 A = 3.5 ± 0.2 / 0.138 ± 0.008  
 B = 3.1 ± 0.2 / 0.122 ± 0.008  
 D = 0.8 ± 0.2 / 0.031 ± 0.008

**Electrical Characteristics:** 25°C, 100KHz, 0.1V

PART NO.	L <sup>1</sup> (uH)	DCR (Ω) MAX	I <sub>rated</sub> <sup>2</sup> (A <sub>dc</sub> )	HEIGHT "C" (mm) MAX
SI415 - 4R7	4.70	0.180	1.40	1.5
SI415 - 100	10.00	0.400	0.96	1.5
SI415 - 220	22.00	0.940	0.62	1.5
SI418 - R16	0.16	0.015	5.50	1.8
SI418 - 1R0	1.00	0.090	2.10	1.8
SI418 - 2R2	2.20	0.130	1.50	1.8
SI418 - 100	10.00	0.350	0.45	1.8

1. Tolerance of inductance : ± 20%.
2. I<sub>rated</sub> is the DC current which cause the inductance drop less than 10% of its nominal inductance without current and the surface temperature of the part increase less than 45°C.
3. Operating temperature: -20°C to 105°C (including self-temperature rise).



**DELTA ELECTRONICS, INC.**

(TAOYUAN PLANT CPBG) 252, SAN YING ROAD, KUEISAN INDUSTRIAL ZONE, TAOYUAN SHIEN, 333, TAIWAN, R.O.C.

TEL: 886-3-3591968; FAX: 886-3-3591991

<http://www.deltaww.com>

## Free Manuals Download Website

<http://myh66.com>

<http://usermanuals.us>

<http://www.somanuals.com>

<http://www.4manuals.cc>

<http://www.manual-lib.com>

<http://www.404manual.com>

<http://www.luxmanual.com>

<http://aubethermostatmanual.com>

Golf course search by state

<http://golfingnear.com>

Email search by domain

<http://emailbydomain.com>

Auto manuals search

<http://auto.somanuals.com>

TV manuals search

<http://tv.somanuals.com>