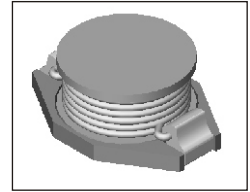


# SMT Power Inductor

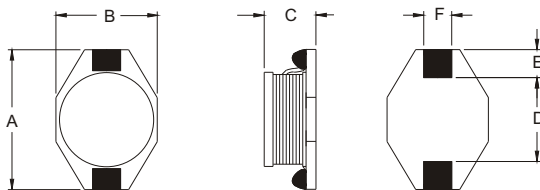
## SISH85 Type

### Features

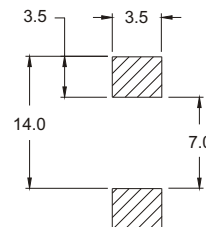
- RoHS compliant.
- Low profile (5.2mm max. height) SMD type.
- Unshielded.
- Self-leads, suitable for high density mounting.
- High energy storage and low DCR.
- Provided with embossed carrier tape packing.
- Ideal for power source circuits, DC-DC converter, DC-AC inverters inductor applications.
- In addition to the standard versions shown here, customized inductors are available to meet your exact requirements.



### Mechanical Dimension:



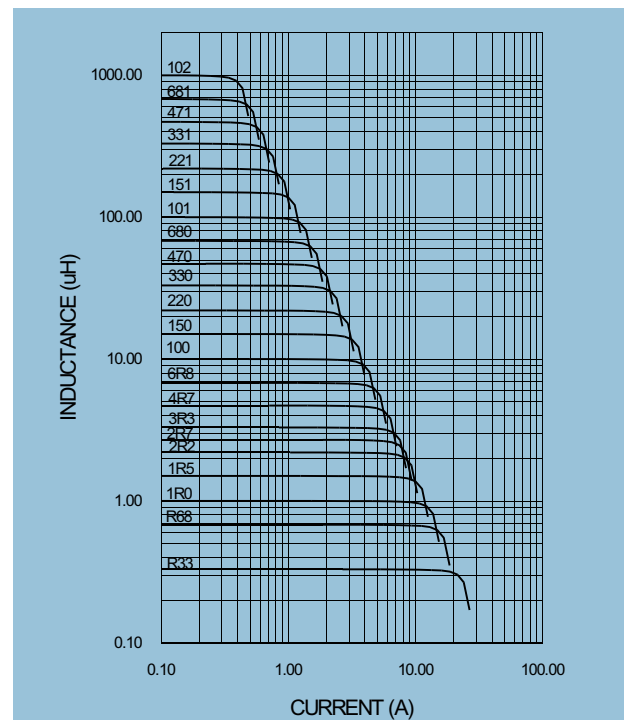
### RECOMMENDED PAD PATTERNS



UNIT:mm/inch  
 A = 12.94 / 00.510 Max.  
 B = 9.4 / 0.370 Max.  
 C = 5.2 / 0.205 Max.  
 D = 7.9±0.2 / 0.303±0.008  
 E = 2.5±0.2 / 0.098±0.008  
 F = 2.5±0.2 / 0.098±0.008

### Electrical Characteristics: 25°C: 100KHz, 0.1V

PART NO.	$L^1$ (uH)	DCR (mΩ)MAX	$I_{sat}^2$ (A <sup>2</sup> )	$I_r^3$ (A)
SISH85 - R33	0.33	2.0	20.0	16.0
SISH85 - R68	0.68	5.0	13.0	12.0
SISH85 - 1R0	1.00	6.0	11.0	10.0
SISH85 - 1R5	1.50	8.0	9.0	9.0
SISH85 - 2R2	2.20	11.0	7.8	7.4
SISH85 - 2R7	2.70	12.0	7.0	6.6
SISH85 - 3R3	3.30	14.0	6.4	5.9
SISH85 - 4R7	4.70	18.0	5.4	4.8
SISH85 - 6R8	6.80	27.0	4.6	4.4
SISH85 - 100	10.00	38.0	3.8	3.9
SISH85 - 150	15.00	46.0	3.0	3.1
SISH85 - 220	22.00	85.0	2.6	2.7
SISH85 - 330	33.00	100.0	2.0	2.1
SISH85 - 470	47.00	140.0	1.6	1.8
SISH85 - 680	68.00	200.0	1.4	1.5
SISH85 - 101	100.00	280.0	1.2	1.3
SISH85 - 151	150.00	400.0	1.0	1.0
SISH85 - 221	220.00	610.0	0.8	0.8
SISH85 - 331	330.00	1020.0	0.6	0.6
SISH85 - 471	470.00	1270.0	0.5	0.5
SISH85 - 681	680.00	2020.0	0.4	0.4
SISH85 - 102	1000.00	3000.0	0.3	0.3



1. Tolerance of inductance: ±20%.
2.  $I_{sat}$  is the DC current which cause the inductance drop less than 10% of its nominal inductance without current.
3.  $I_r$  is the DC current which cause the surface temperature of the part increase less than 45°C.
4. Operating temperature : -20°C to 105°C (including self-temperature rise)



**DELTA ELECTRONICS, INC.**

(TAOYUAN PLANT CPBG) 252, SAN YING ROAD, KUEISAN INDUSTRIAL ZONE, TAOYUAN SHIEN, 333, TAIWAN, R.O.C.

TEL: 886-3-3591968; FAX: 886-3-3591991

<http://www.deltawww.com>

## Free Manuals Download Website

<http://myh66.com>

<http://usermanuals.us>

<http://www.somanuals.com>

<http://www.4manuals.cc>

<http://www.manual-lib.com>

<http://www.404manual.com>

<http://www.luxmanual.com>

<http://aubethermostatmanual.com>

Golf course search by state

<http://golfingnear.com>

Email search by domain

<http://emailbydomain.com>

Auto manuals search

<http://auto.somanuals.com>

TV manuals search

<http://tv.somanuals.com>