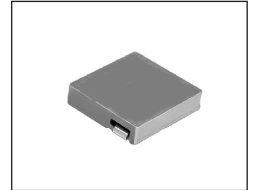


# SMT Power Inductor

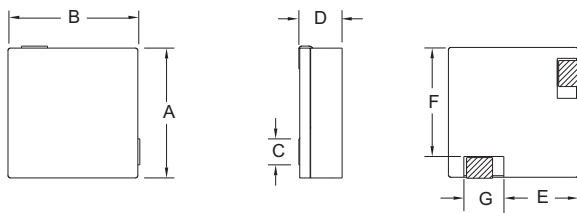
## HAL1355 Type

### Features

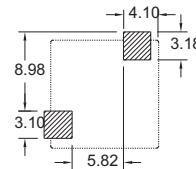
- RoHS compliant.
  - Low profile (5.5mm max. height) SMD type.
  - Magnetically shielded, suitable for high density mounting.
  - High energy storage and low DCR.
  - Provided with embossed carrier tape packing.
  - Ideal for power source circuits, DC-DC converter, DC-AC inverters inductor application.
- In addition to the standard versions shown here, customized inductors are available to meet your exact requirements.



### Mechanical Dimension:



### RECOMMENDED PAD PATTERNS



UNIT : mm / inch  
 A = 12.5±0.4 / 0.492±0.016  
 B = 12.5±0.4 / 0.492±0.016  
 C = 2.40 / 0.094  
 D = 5.50 / 0.217 Max.  
 E = 7.75 / 0.305  
 F = 10.35 / 0.407  
 G = 3.75 / 0.148

### Electrical Characteristics: At 25°C: 100KHz, 1V

PART NO.	$L_0^1$ ( $\mu$ H)	$L_i$ ( $\mu$ H)±20%	DCR ( $m\Omega$ ) MAX	$I_{sat}^2$ (A dc)
HAL1355-0R2	0.2	0.24	0.45	50
HAL1355-0R7	0.7	0.50	1.20	35
HAL1355-1R0	1.0	0.80	1.50	24

1.  $L_0$  is the initial inductance.
2.  $I_{sat}$  is the DC current which cause the inductance drop to  $L_i$ .
3. Operating temperature : -20°C to 105°C ( including self-temperature rise ).



DELTA ELECTRONICS, INC.

(TAOYUAN PLANT CPBG) 252, SAN YING ROAD, KUEISAN INDUSTRIAL ZONE, TAOYUAN SHIEN, 333, TAIWAN, R.O.C.

TEL: 886-3-3591968; FAX: 886-3-3591991

<http://www.deltaww.com>

## Free Manuals Download Website

<http://myh66.com>

<http://usermanuals.us>

<http://www.somanuals.com>

<http://www.4manuals.cc>

<http://www.manual-lib.com>

<http://www.404manual.com>

<http://www.luxmanual.com>

<http://aubethermostatmanual.com>

Golf course search by state

<http://golfingnear.com>

Email search by domain

<http://emailbydomain.com>

Auto manuals search

<http://auto.somanuals.com>

TV manuals search

<http://tv.somanuals.com>